

Date: 21st January 2026

* Sensex 82180.47 - 1065.71

* Nifty 25232.50 - 353.00

* Bank Nifty 59404.20 - 487.15

Market Preview

Nifty tanks; crucial support at 200DMA of 25100 level

Nifty plunged heavily to break below the important 25500 zone and with a huge bearish candle on the daily chart, the index is precariously placed having 25100 level as the next crucial support. BankNifty also tanked heavily during the session and would need to sustain the strong support zone at 58800 level to maintain the overall bias intact. The market breadth was very weak with the advance decline indicating a ratio of 1:5 at close.

Market Forecast

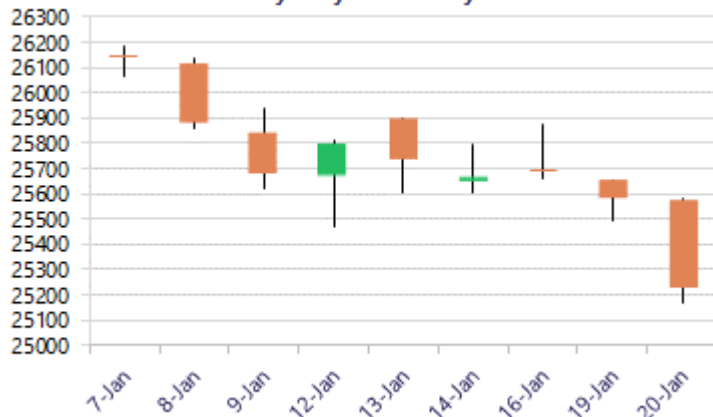
Nifty daily range 25100-25400

Nifty, tanked heavily moving below the important support of 25500 zone and further as the day progressed a decisive break below the 25400 level intensified the selling pressure to end near the 25200 zone with bias turning very weak. As mentioned earlier, the index would need to sustain the crucial and important support positioned near the 200 period MA at 25100 zone and the long term trendline zone coinciding with this zone. From current level, the index would need a decisive move past the 25500 level which would now be the important resistance zone and thereafter, expect for some stability in the coming sessions.

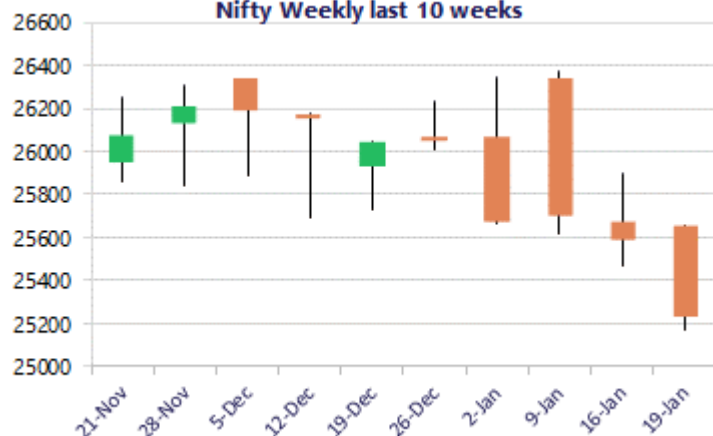
BankNifty witnessed heavy selling pressure from near the 60000 zone to slip further down post the lunch session to end near the 59400 level with bias once again precariously placed having the crucial and important support at 58800 zone which needs to be sustained failing which the overall trend shall turn weak. As mentioned earlier, the index is gripped between the tight range of 60200 and 58800 levels and on the upside, a decisive breach above the 60400 zone is much needed to anticipate for further upward move in the coming days.

The support for the day is seen at 25100 levels, while the resistance is seen at 25400 levels. BankNifty would have the daily range of 58800-60000 levels.

Nifty daily last 10 days



Nifty Weekly last 10 weeks

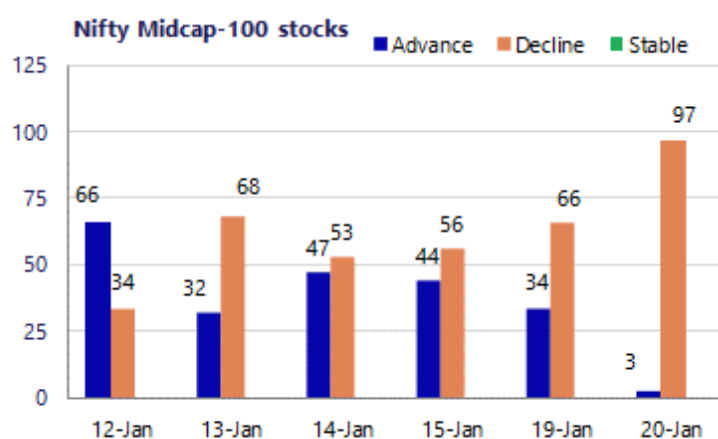
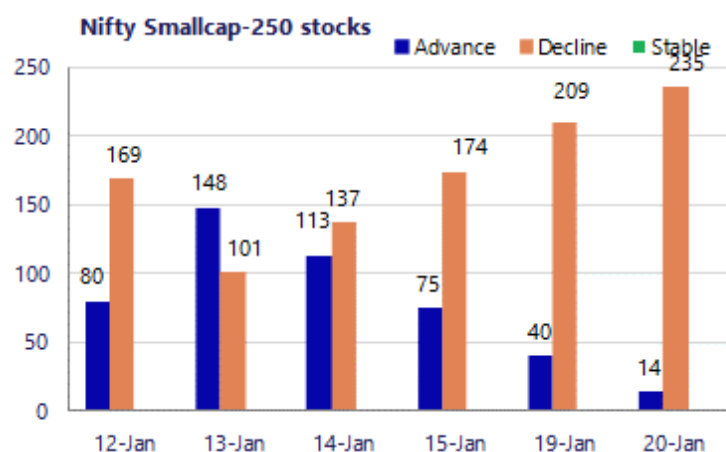


*Blue candle → Close rate > Open rate * Red candle → Close rate < Open rate

Sensex	Period	Closing	% Chng	Trend	Reversal	2 Sup	1 Sup	Pivot	1 Res	2 Res
Nifty	Daily	25232.50	-1.38%	-9	25459.20	24916	25074	25330	25488	25743
	Weekly	25694.35	0.04%	-2	26195.30	25266	25480	25689	25903	26112
	Monthly	26129.60	-0.28%	3	25829.00	25419	25774	26050	26405	26681
Bank Nifty	Daily	59404.20	-0.81%	-1	59709.80	58851	59128	59561	59837	60270
	Weekly	60095.15	1.42%	-2	60273.50	58416	59255	59707	60547	60998
	Monthly	59581.85	-0.29%	3	58708.70	58069	58825	59469	60226	60870
Sensex	Daily	82180.47	-1.28%	-10	82764.50	81238	81709	82482	82953	83725
	Weekly	83570.35	-0.01%	-2	85422.85	82195	82883	83549	84237	84903
	Monthly	85220.60	-0.57%	3	84363.05	83208	84214	85159	86166	87111

Gainers - Losers (Nifty 500 Stocks)

Gainers				Losers			
Company Name	Last Price	% Gain	Volume	Company Name	Last Price	% Loss	Volume
Deepak Nitrite	1606	4.58%	1653252	Aditya Birla Re	1,374.30	-7.21%	445981
Dalmia Bharat	2,179.70	1.05%	1166456	Aditya Birla F	67.99	-5.42%	92208847
Five-Star Busin	510.25	0.77%	1406819	Chennai Petro	803.00	-5.27%	1028519
City Union Bank	272.05	0.67%	2233326	Chola Fin Hold	1,678.10	-5.17%	356999
Dr Reddys Labs	1,172.60	0.46%	2790668	CDSL	1,342.60	-5.11%	3658847
General Insuran	365.50	0.43%	553066	BHEL	250.15	-4.92%	24898865
Ajanta Pharma	2,695.00	0.35%	67723	Birlasoft	405.8	-4.71%	1511449



Nifty Daily chart with RSI indicator



BankNifty Daily chart with RSI indicator

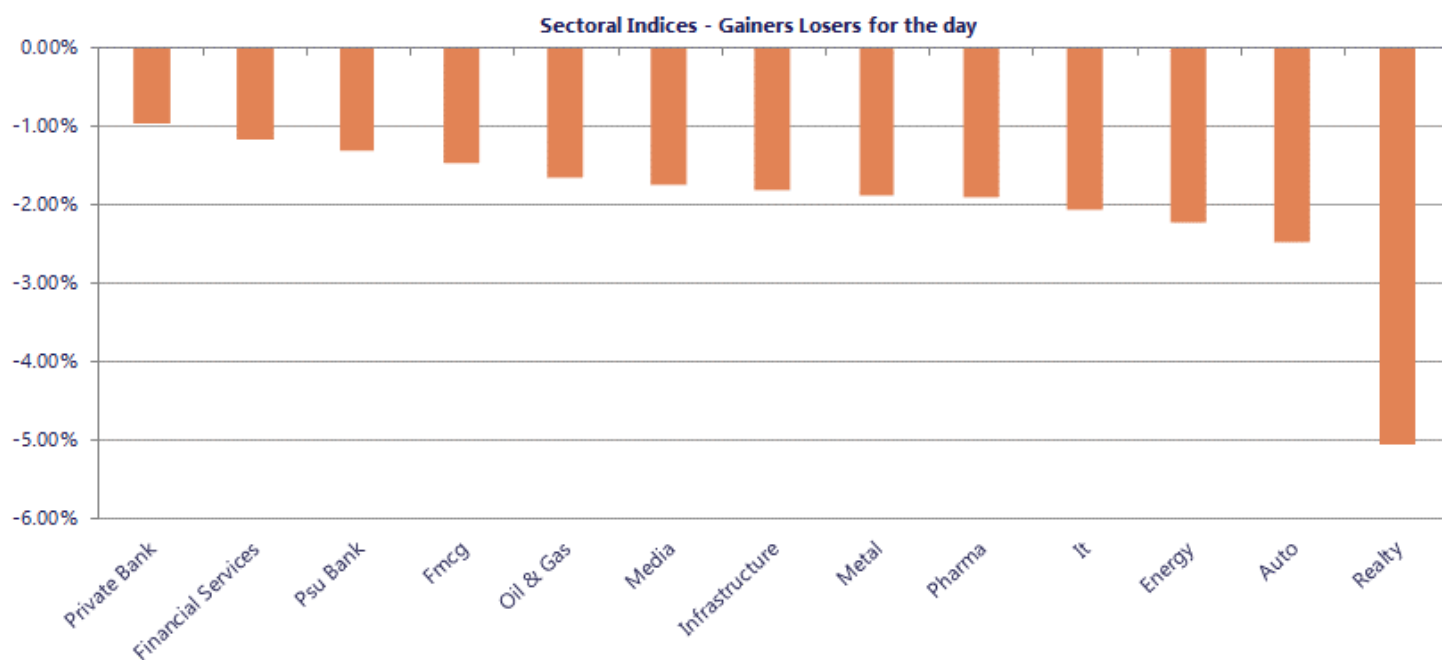


Breakouts - Cross above 200 DMA			
Company Name	LCP	Change %	200 DMA
Anjani Portland	138.71	4.47	132.78
Brace Port Logi	85	2.43	82.98
Coromandel Int	2314.5	0.86	2294.78
California Soft	15.02	0.81	14.9
Medico Remedies	48.44	0.62	48.14
Greenlam Ind	243.51	0.09	243.3
UTI NIF10GETF	25.91	0.04	25.9
J. K. Cement	5982.5	0.03	5980.91

Breakdown - Cross below 200 DMA			
Company Name	LCP	Change %	200 DMA
Shree Digvijay	79.82	-6.54	85.41
Shree Rama News	30.95	-6.38	33.06
Sobha	1394.7	-6.00	1483.77
Thejo Engg	1775	-5.06	1869.64
AMD Industries	49.2	-4.54	51.54
Touchwood Enter	94.6	-4.51	99.07
Guj Raffia Ind	42.97	-4.45	44.97
Syrma SGS	654.65	-4.40	684.8
V2 Retail	1912.8	-3.88	1990.1
MSP Steel	30.92	-3.74	32.12
Ramco System	457	-3.67	474.4
MYMUDRA	78	-3.43	80.77
HANDSON GLOBAL	62.21	-3.27	64.31
Sampann Utpadan	30.41	-2.97	31.34
Rain Industries	134.28	-2.77	138.11
SBFC Finance	104	-2.76	106.95
Maithan Alloys	1033	-2.64	1061
Kody Technolab	796.05	-2.63	817.52

* Stocks crossing above its Simple Moving Average (200DMA)

* Stocks crossing below its Simple Moving Average (200DMA)



Stocks witnessing a volume surge as compared to their 5 day average

Watch out for the stocks that have seen a huge spurt in its share price over the last three days

Volume Shockers - NSE					
Company name	LCP	% Chg	Volume	Avg Vol *	% Chg
Aditya Birla Li	114.55	-1.04	34699753	58829	58884
Bajaj Electric	427.3	1.14	1067321	4693	22642
Patel Retail	202.85	16.38	490935	4564	10656
Orchid Pharma	693.65	-2.33	174618	1759	9828
G R Infraprojec	908.35	0.18	232239	3462	6609
Mahindra Holida	303.4	1.8	185929	2839	6450
Tips Music	550.5	5.85	672224	11258	5871
Aditya Birla F	68.45	-5	11687881	220741	5195
ISGEC Heavy Eng	736	-2.9	107924	2068	5118
Emami	493.95	-1.68	382380	10032	3712
Prudent Advisor	2350	-0.07	109657	3081	3459
Hatsun Agro	930.9	-1.97	136133	4058	3255
Jyothy Labs	247.7	-1.98	608834	21013	2797
Bright Brothers	221.1	-13.41	40129	1390	2788
Manaksia Coated	127.85	-2.55	284848	10459	2623
Blue Dart	5345.6	-0.48	42968	1598	2589
Capri Global	175.65	-1.32	1386145	51593	2587
Bharat Rasayan	1763.8	-13.53	29966	1201	2395
Heritage Foods	422.35	-3.86	111414	4646	2298
Equitas Bank	67.99	-1.51	5448919	241665	2155
Rossari	526.65	0.88	38686	1910	1926

Price Shockers - NSE				
Company name	LCP	Prv Close	% Chg	Volume
ITCONS	403.5	315.8	27.77	23400
Jindal Saw	187.9	154.85	21.34	4723737
Jay Ambe Superm	162.4	134.25	20.97	19200
Riddhi Siddhi	580	485.05	19.58	5798
Aarti Surfactan	455.15	384.2	18.47	18445
Gyan Developers	41	35.01	17.11	12
AMD Industries	49	43.63	12.31	116371
Aditya Consumer	43.8	39	12.31	2000
Apoorva Leasing	38.5	34.3	12.24	83
Forbes Gokak	362.1	323.2	12.04	3868
Patel Retail	202.85	181.7	11.64	490935
InfoBeans Tech	876.9	787.35	11.37	37266
Alacrity Sec	60.01	53.98	11.17	48981
Southern Magnes	103.66	94.03	10.24	7265
Switching Tech	68.14	61.81	10.24	4335
Jindal Leasefin	67	60.78	10.23	925
Mangalam Drugs	51.92	47.1	10.23	44500
Continent Chem	77.78	70.56	10.23	319
J J Finance	37.61	34.12	10.23	2205
Amit Securities	46.04	41.77	10.22	810
Pankaj Polymers	62.54	56.74	10.22	7627

Nifty 50 stocks - Summary Details											
Symbol	LTP	Chng	% Chng	Volume (lacs)	Turnover (crs.)	52w High	Diff with 52w H	52w Low	Diff with 52w L	30 days % chng	365 days % chng
NIFTY 50	25232.50	-353.00	-1.38%	4097.45	31018.51	26373.20	4.33%	21743.65	16.05%	-1.47%	10.27%
ADANIENT	2050.00	-84.60	-3.96%	11.61	242.43	2616.50	21.65%	1967.52	4.19%	-4.66%	-11.05%
ADANIPTS	1375.60	-27.40	-1.95%	17.99	248.79	1549.00	11.19%	1010.75	36.10%	-6.24%	20.58%
APOLLOHOSP	6908.00	-225.00	-3.15%	4.99	348.86	8099.50	14.71%	6001.00	15.11%	1.72%	4.47%
ASIANPAINT	2680.00	-74.00	-2.69%	9.11	246.53	2985.70	10.24%	2124.75	26.13%	-1.64%	21.80%
AXISBANK	1296.30	-11.20	-0.86%	62.68	815.52	1327.00	2.31%	933.50	38.86%	6.25%	31.93%
BAJAJ-AUTO	9176.50	-253.00	-2.68%	3.85	357.82	9888.00	7.20%	7089.35	29.44%	4.75%	9.88%
BAJAJFINSV	1960.30	-57.50	-2.85%	15.73	309.90	2195.00	10.69%	1617.00	21.23%	-1.27%	20.06%
BAJFINANCE	931.75	-37.70	-3.89%	90.01	849.61	1102.50	15.49%	718.21	29.73%	-3.85%	-86.50%
BEL	409.00	-3.80	-0.92%	327.28	1347.35	436.00	6.19%	240.25	70.24%	5.08%	46.31%
BHARTIARTL	1990.00	-20.00	-1.00%	60.77	1216.54	2174.50	8.48%	1559.50	27.61%	-4.18%	23.50%
CIPLA	1381.00	-11.30	-0.81%	20.40	282.23	1673.00	17.45%	1335.00	3.45%	-8.23%	-3.47%
COALINDIA	416.00	-14.15	-3.29%	67.68	285.11	442.00	5.88%	349.25	19.11%	11.55%	10.96%
DRREDDY	1172.60	5.40	0.46%	27.91	327.78	1379.70	15.01%	1020.00	14.96%	-8.68%	-10.86%
EICHERMOT	7170.00	-153.50	-2.10%	3.02	219.37	7613.50	5.83%	4646.00	54.33%	1.48%	46.11%
ETERNAL	271.25	-10.10	-3.59%	836.80	2284.05	368.45	26.38%	194.80	39.25%	-1.64%	#VALUE!
GRASIM	2711.40	-68.60	-2.47%	4.11	112.98	2977.80	8.95%	2301.65	17.80%	-1.16%	17.01%
HCLTECH	1685.00	-31.80	-1.85%	17.39	294.41	1831.45	8.00%	1302.75	29.34%	4.53%	-4.03%
HDFCBANK	930.50	2.60	0.28%	360.22	3350.47	1020.50	8.82%	812.73	14.49%	-5.84%	-43.31%
HDFCLIFE	734.05	-2.75	-0.37%	23.22	170.65	820.75	10.56%	595.25	23.32%	-3.87%	14.73%
HINDALCO	929.00	-10.95	-1.16%	57.10	535.27	970.80	4.31%	546.45	70.01%	10.32%	52.34%
HINDUNILVR	2382.00	-31.90	-1.32%	14.61	352.29	2750.00	13.38%	2136.00	11.52%	5.87%	2.54%
ICICIBANK	1375.60	-5.00	-0.36%	150.13	2072.30	1500.00	8.29%	1186.00	15.99%	1.96%	12.66%
INDIGO	4795.00	-146.50	-2.96%	6.82	329.63	6232.50	23.06%	3945.00	21.55%	-4.11%	20.81%
INFY	1654.40	-26.80	-1.59%	64.06	1066.15	1924.00	14.01%	1307.00	26.58%	2.59%	-7.39%
ITC	326.15	-7.05	-2.12%	187.67	618.52	471.50	30.83%	325.50	0.20%	-16.92%	-24.31%
JIOFIN	265.40	-10.25	-3.72%	187.43	505.54	338.60	21.62%	198.65	33.60%	-7.17%	-1.20%
JSWSTEEL	1161.60	-22.50	-1.90%	11.07	129.80	1223.90	5.09%	900.50	29.00%	9.68%	30.32%
KOTAKBANK	423.80	-3.10	-0.73%	188.06	804.87	460.38	7.95%	372.55	13.76%	-80.23%	-75.73%
LT	3808.00	-61.80	-1.60%	16.58	634.39	4195.00	9.23%	2965.30	28.42%	-5.00%	8.44%
M&M	3557.50	-99.90	-2.73%	17.53	630.93	3839.90	7.35%	2425.00	46.70%	1.49%	25.37%
MARUTI	15912.00	-264.00	-1.63%	2.90	462.81	17370.00	8.39%	11059.45	43.88%	-1.45%	33.29%
MAXHEALTH	990.00	-23.60	-2.33%	26.36	263.48	1314.30	24.67%	940.05	5.31%	-5.78%	-1.27%
NESTLEIND	1296.60	-19.00	-1.44%	11.74	153.38	1332.70	2.71%	1055.00	22.90%	5.72%	-40.66%
NTPC	339.00	-4.35	-1.27%	77.18	265.15	371.45	8.74%	292.80	15.78%	7.33%	5.27%
ONGC	240.64	-2.47	-1.02%	64.96	156.98	270.47	11.03%	205.00	17.39%	4.39%	-8.80%
POWERGRID	254.50	-3.15	-1.22%	124.52	317.96	322.00	20.96%	247.30	2.91%	-2.20%	-14.85%
RELIANCE	1392.40	-21.20	-1.50%	131.88	1847.76	1611.80	13.61%	1114.85	24.90%	-9.68%	8.54%
SBILIFE	2044.00	-29.70	-1.43%	5.76	118.61	2109.60	3.11%	1372.55	48.92%	2.23%	34.61%
SBIN	1034.25	-4.15	-0.40%	89.05	926.51	1052.00	1.69%	680.00	52.10%	5.93%	35.90%
SHRIRAMFIN	985.25	-25.10	-2.48%	61.29	611.97	1025.60	3.93%	493.35	99.71%	12.05%	91.90%
SUNPHARMA	1621.30	-54.10	-3.23%	50.19	819.57	1851.20	12.42%	1548.00	4.74%	-3.98%	-6.22%
TATACONSUM	1183.50	3.30	0.28%	20.27	241.81	1220.90	3.06%	930.10	27.24%	-0.32%	23.65%
TMPV	338.20	-5.80	-1.69%	115.41	391.93	786.65	57.01%	336.75	0.43%	-2.45%	#VALUE!
TATASTEEL	183.68	-4.59	-2.44%	200.93	373.34	191.00	3.83%	124.74	47.25%	11.61%	44.51%
TCS	3104.20	-59.40	-1.88%	44.98	1406.82	4191.35	25.94%	2866.60	8.29%	-3.61%	-23.29%
TECHM	1675.70	-42.60	-2.48%	18.26	307.53	1736.40	3.50%	1209.40	38.56%	6.56%	3.49%
TITAN	4070.00	-74.10	-1.79%	5.86	240.43	4312.10	5.61%	2925.00	39.15%	5.45%	23.43%
TRENT	3836.00	-109.60	-2.78%	9.13	352.85	6270.40	38.82%	3819.30	0.44%	-2.87%	-36.53%
ULTRACEMCO	12026.00	-271.00	-2.20%	2.98	364.16	13097.00	8.18%	10047.85	19.69%	6.97%	16.23%
WIPRO	240.00	-5.95	-2.42%	167.95	405.41	324.60	26.06%	228.00	5.26%	-7.00%	-12.77%

Disclaimer / Disclosures

ANALYST CERTIFICATION

I, Mrs. Vaishali Parekh B.com, Research Analyst, author and the name subscribed to this report, hereby certify that all of the views expressed in this research report accurately reflect our views about the subject issuer(s) or securities. We also certify that no part of our compensation was, is, or will be directly or indirectly related to the specific recommendation(s) or view(s) in this report.

Terms & conditions and other disclosures:

Prabhudas Lilladher Pvt. Ltd, Mumbai, India (hereinafter referred to as "PL") is engaged in the business of Stock Broking, Portfolio Manager, Depository Participant and distribution for third party financial products. PL is a subsidiary of Prabhudas Lilladher Advisory Services Pvt Ltd. which has its various subsidiaries engaged in business of commodity broking, investment banking, financial services (margin funding) and distribution of third party financial/other products, details in respect of which are available at www.plindia.com

This document has been prepared by the Research Division of PL and is meant for use by the recipient only as information and is not for circulation. This document is not to be reported or copied or made available to others without prior permission of PL. It should not be considered or taken as an offer to sell or a solicitation to buy or sell any security.

The information contained in this report has been obtained from sources that are considered to be reliable. However, PL has not independently verified the accuracy or completeness of the same. Neither PL nor any of its affiliates, its directors or its employees accepts any responsibility of whatsoever nature for the information, statements and opinion given, made available or expressed herein or for any omission therein.

Recipients of this report should be aware that past performance is not necessarily a guide to future performance and value of investments can go down as well. The suitability or otherwise of any investments will depend upon the recipient's particular circumstances and, in case of doubt, advice should be sought from an independent expert/advisor.

Either PL or its affiliates or its directors or its employees or its representatives or its clients or their relatives may have position(s), make market, act as principal or engage in transactions of securities of companies referred to in this report and they may have used the research material prior to publication.

PL may from time to time solicit or perform investment banking or other services for any company mentioned in this document.

PL is registered as Research Analyst under Securities and Exchange Board of India (Research Analysts) Regulations, 2014 PL submits that no material disciplinary action has been taken on us by any Regulatory Authority impacting Equity Research Analysis activities.

PL or its research analysts or its associates or his relatives do not have any financial interest in the subject company.

PL or its research analysts or its associates or his relatives do not have actual/beneficial ownership of one per cent or more securities of the subject company at the end of the month immediately preceding the date of publication of the research report.

PL or its research analysts or its associates or his relatives do not have any material conflict of interest at the time of publication of the research report.

PL or its associates might have received compensation from the subject company in the past twelve months.

PL or its associates might have managed or co-managed public offering of securities for the subject company in the past twelve months or mandated by the subject company for any other assignment in the past twelve months.

PL or its associates might have received any compensation for investment banking or merchant banking or brokerage services from the subject company in the past twelve months.

PL or its associates might have received any compensation for products or services other than investment banking or merchant banking or brokerage services from the subject company in the past twelve months PL or its associates might have received any compensation or other benefits from the subject company or third party in connection with the research report.

PL encourages independence in research report preparation and strives to minimize conflict in preparation of research report. PL or its analysts did not receive any compensation or other benefits from the subject Company or third party in connection with the preparation of the research report. PL or its Research Analysts do not have any material conflict of interest at the time of publication of this report.

It is confirmed that Mrs. Vaishali Parekh B.com, Research Analyst of this report has not received any compensation from the companies mentioned in the report in the preceding twelve months compensation of our Research Analysts is not based on any specific merchant banking, investment banking or brokerage service transactions.

The Research analysts for this report certifies that all of the views expressed in this report accurately reflect his or her personal views about the subject company or companies and its or their securities, and no part of his or her compensation was, is or will be, directly or indirectly related to specific recommendations or views expressed in this report.

The research analysts for this report has not served as an officer, director or employee of the subject company PL or its research analysts have not engaged in market making activity for the subject company

Our sales people, traders, and other professionals or affiliates may provide oral or written market commentary or trading strategies to our clients that reflect opinions that are contrary to the opinions expressed herein, and our proprietary trading and investing businesses may make investment decisions that are inconsistent with the recommendations expressed herein. In reviewing these materials, you should be aware that any or all of the foregoing, among other things, may give rise to real or potential conflicts of interest.

PL and its associates, their directors and employees may (a) from time to time, have a long or short position in, and buy or sell the securities of the subject company or (b) be engaged in any other transaction involving such securities and earn brokerage or other compensation or act as a market maker in the financial instruments of the subject company or act as an advisor or lender/borrower to the subject company or may have any other potential conflict of interests with respect to any recommendation and other related information and opinions.

Regd. Office: 3rd Floor, Sadhana House, 570, P. B. Marg, Behind Mahindra Tower, Worli, Mumbai - 400 018, India.