

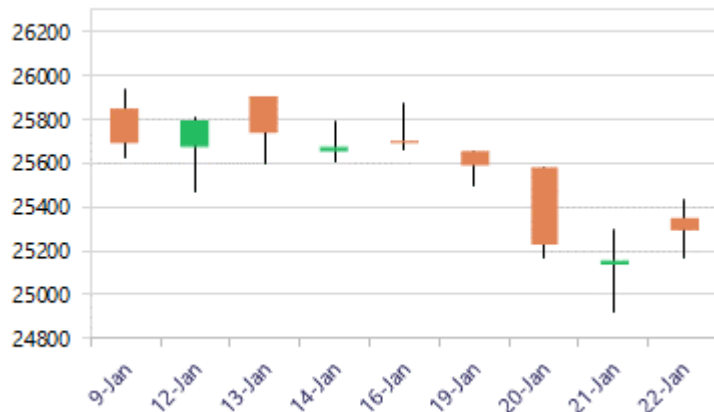
Date: 23<sup>rd</sup> January 2026

\* Sensex 82307.37 + 397.74

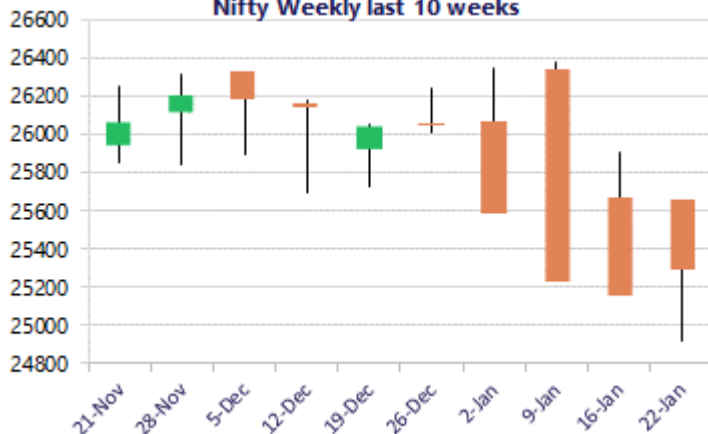
\* Nifty 25289.90 + 132.40

\* Bank Nifty 59200.10 + 399.80

Nifty daily last 10 days



Nifty Weekly last 10 weeks



\*Blue candle → Close rate > Open rate \* Red candle → Close rate < Open rate

## Market Preview

### Nifty recovers from 200 DMA zone.

Nifty witnessed high fluctuations during the session, taking support near the important 25150 zone, and with recovery, a bounce back towards the 25332 level to close in the green near the 25290 zone with bias maintained intact. The market breadth was slightly on the positive end, with the advance-decline ratio of 3:2 at close.

## Market Forecast

### Nifty daily range 25100-25500

Nifty witnessed a highly volatile session, swinging both ways and finding resistance near the 25435 zone, and thereafter, showed good support near the 25170 level to close on a positive note with bias overall maintained with a cautious positive approach. As mentioned earlier, the index is precariously placed, having the crucial and major support positioned near the 24900-25000 zone, and on the upside, it would need a convincing and decisive breach above the 25500-25600 zone to expect further upside movement in the coming days.

Bank Nifty witnessed high fluctuations, resisting near the 59600 zone and maintaining above the 59000 level, ending the session on a positive note near the 59200 level with the bias maintained with a cautiously optimistic approach as of now, expecting a pullback in the coming sessions. With the major support zone lying near the 58700 level, the index would need to breach above the level of the 60200 zone to establish conviction, and thereafter, expect a further rise in the coming days.

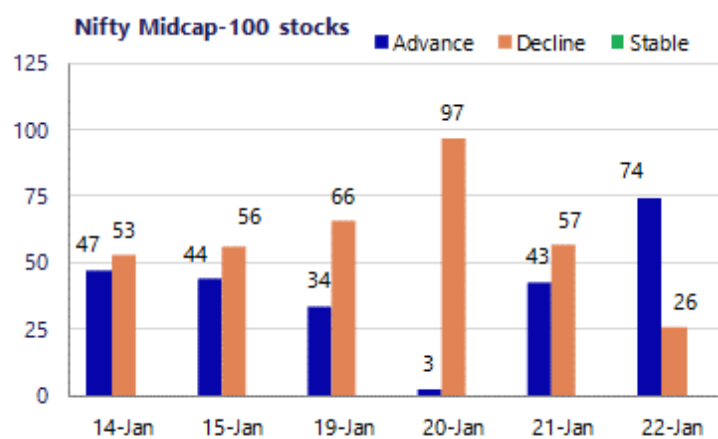
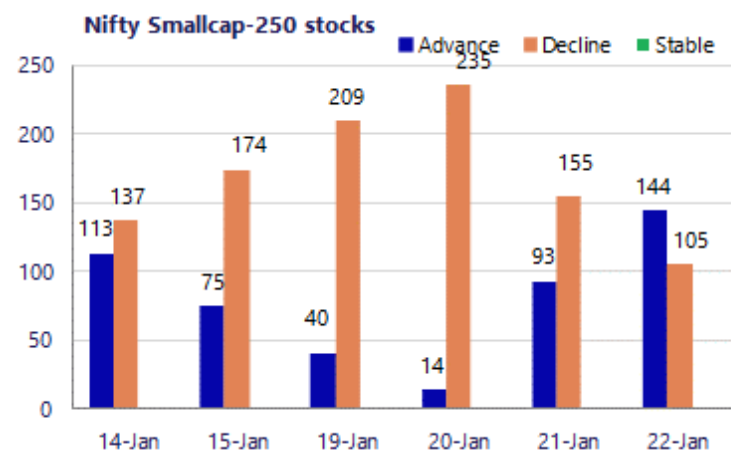
The support for the day is seen at 25100 levels, while the resistance is seen at 25500 levels. BankNifty would have the daily range of 58500-60000 levels.

Sensex	Period	Closing	% Chng	Trend	Reversal	2 Sup	1 Sup	Pivot	1 Res	2 Res
Nifty	Daily	25289.90	0.53%	-11	25332.55	25031	25160	25298	25428	25565
	Weekly	25694.35	0.04%	-2	26195.30	25266	25480	25689	25903	26112
	Monthly	26129.60	-0.28%	3	25829.00	25419	25774	26050	26405	26681
Bank Nifty	Daily	59200.10	0.68%	-3	59552.80	58449	58824	59199	59574	59949
	Weekly	60095.15	1.42%	-2	60273.50	58416	59255	59707	60547	60998
	Monthly	59581.85	-0.29%	3	58708.70	58069	58825	59469	60226	60870
Sensex	Daily	82307.37	0.49%	-12	82394.50	81413	81860	82322	82769	83230
	Weekly	83570.35	-0.01%	-2	85422.85	82195	82883	83549	84237	84903
	Monthly	85220.60	-0.57%	3	84363.05	83208	84214	85159	86166	87111

**Gainers - Losers ( Nifty 500 Stocks )**

Gainers			
Company Name	Last Price	% Gain	Volume
Bank of India	166.42	5.68%	42694633
Ceat	3,738.80	5.46%	310559
AAVAS Financier	1462.8	5.38%	202116
APL Apollo	1,976.00	5.18%	1289412
Ashok Leyland	190.28	4.99%	20312281
Astral Ltd	1,413.20	4.85%	637724
Alok Industries	14.77	4.75%	15361736

Losers			
Company Name	Last Price	% Loss	Volume
IIFL Finance	538.75	-13.50%	24204278
Lodha Developer	945.5	-3.54%	2425886
Sapphire Foods	193.80	-3.70%	813000
Devyani Int	120.35	-3.83%	3936498
Dalmia Bharat	2,143.70	-3.97%	576893
Hind Zinc	668.25	-4.20%	28199034
Swiggy	320.3	-4.26%	26794608



### Nifty Daily chart with RSI indicator



### BankNifty Daily chart with RSI indicator



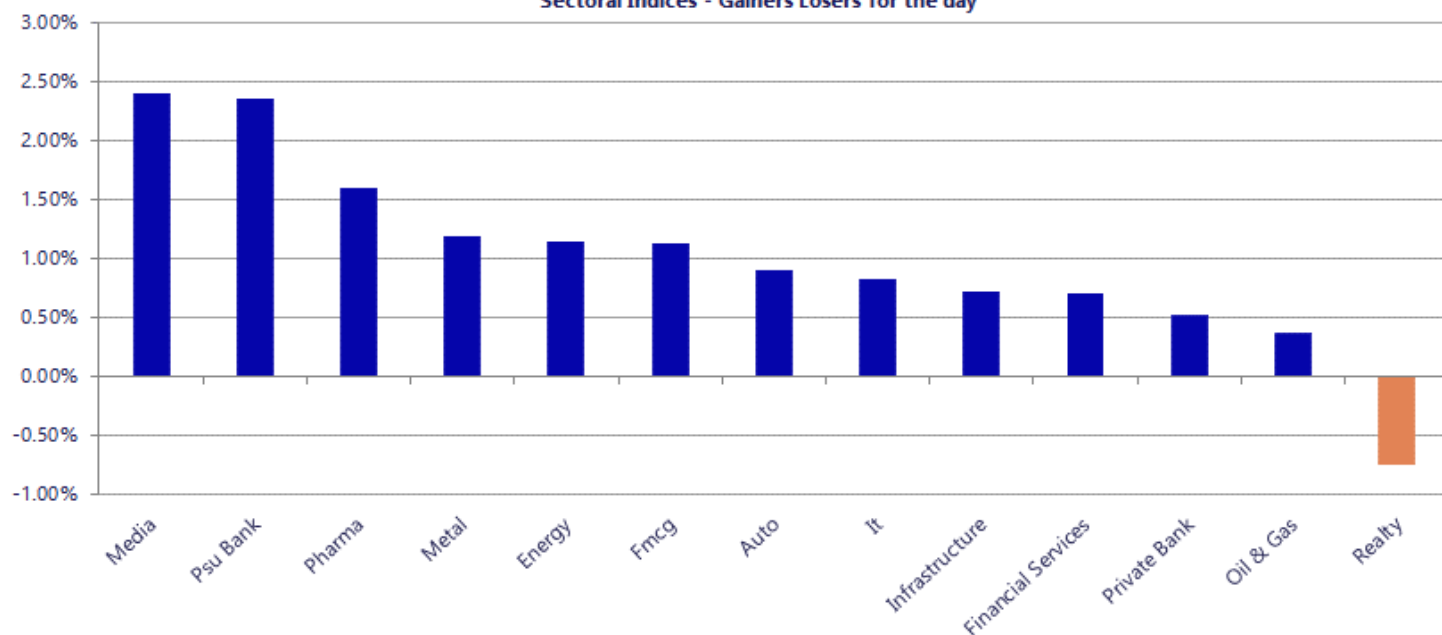
Breakouts - Cross above 200 DMA			
Company Name	LCP	Change %	200 DMA
Ducol Organics	167	15.14	145.04
Zota Health Car	1376	8.12	1272.63
TAC Infosec	656.5	5.48	622.38
Vishnusurya Pro	180.45	4.84	172.12
Radico Khaitan	2986.8	4.65	2853.98
Minda Corp	564.55	4.48	540.34
Gandhar Oil	158.29	4.47	151.51
Ceat	3738.8	4.00	3595.02
Vaswani Ind	54.45	3.95	52.38
Apollo Micro Sy	232.3	3.60	224.22
GE Vernova T&D	2650.4	3.56	2559.17
Strides Pharma	864.6	3.33	836.7
JK Bank	107.09	3.27	103.7
Bafna Pharma	117.32	3.06	113.84
Sharda Crop	835.25	2.75	812.91
Adani Trans	924.8	2.71	900.38
Krishana Phosch	489.4	2.62	476.92
Medico Remedies	49.31	2.54	48.09

\* Stocks crossing above its Simple Moving Average (200DMA)

Breakdown - Cross below 200 DMA			
Company Name	LCP	Change %	200 DMA
Pentagon Rubber	65.55	-4.05	68.32
Global Pet	121	-4.04	126.09
Sky Gold	313.25	-3.26	323.82
Tega Industries	1728.3	-2.43	1771.41
Apex Ecotech	120.35	-0.86	121.39
ABSL AMC	774.25	-0.73	779.97
Metropolis	1885.3	-0.41	1893.09
KEI Industries	3848.4	-0.14	3853.79
Timken	3034.3	-0.07	3036.57

\* Stocks crossing below its Simple Moving Average (200DMA)

Sectoral Indices - Gainers Losers for the day



Stocks witnessing a volume surge as compared to their 5 day average

Watch out for the stocks that have seen a huge spurt in its share price over the last three days

Volume Shockers - NSE					
Company name	LCP	% Chg	Volume	Avg Vol *	% Chg
Rallis India	268.8	<b>14.41</b>	4024837	27621	14471
Harsha Engineer	371.95	<b>1.38</b>	452536	3716	12079
Jindal PolyFilm	390.1	<b>6.57</b>	374319	4786	7720
JNK India	218.4	<b>7.09</b>	121951	1670	7202
CreditAccess Gr	1443	<b>6.74</b>	1038645	14933	6855
Bajaj Consumer	297.05	<b>20</b>	1628393	24580	6525
Brookfield Ind	345.2	<b>0.52</b>	541971	8996	5924
Huhtamaki India	185.55	<b>0.35</b>	228733	4132	5436
Tavernier	67.35	<b>1.58</b>	50729	1208	4101
Landmark Cars	360	<b>-2.27</b>	332448	10378	3104
IIFL Finance	529.25	<b>-15.01</b>	1287388	54292	2271
HDFC Life	724.7	<b>0.14</b>	2018033	92509	2081
Transworld Ship	169.1	<b>17.59</b>	36770	1931	1804
Jindal Photo	1414.05	<b>9.84</b>	21269	1141	1764
Schneider Elect	620	<b>7.16</b>	378014	23001	1543
PDS	309.75	<b>-1.32</b>	78214	4935	1485
CAMS	711.4	<b>1.52</b>	271449	17654	1438
Mahindra Holida	295.8	<b>0.48</b>	605621	40823	1384
Tatva Chintan	1274.2	<b>-8.36</b>	39822	2780	1333
Physicswallah	129.6	<b>14.08</b>	7030410	517362	1259
Global Vectra	183.4	<b>11.12</b>	21534	1704	1164

Price Shockers - NSE				
Company name	LCP	Prv Close	% Chg	Volume
Pecos Hotels	326.55	270	<b>20.94</b>	0
KFA Corporation	88	75.33	<b>16.82</b>	19881
Kabra Extrusion	228	195.6	<b>16.56</b>	9391
Sinnar Bidi	928.6	802.2	<b>15.76</b>	10
Omega Int Tech	488.4	421.95	<b>15.75</b>	1321
Citi Port Fin	36.39	31.44	<b>15.74</b>	356
Softbpo Global	316.6	273.55	<b>15.74</b>	250
Amit Securities	50.75	43.85	<b>15.74</b>	156
Pankaj Polymers	68.94	59.57	<b>15.73</b>	2799
Thrive Future	119.05	102.9	<b>15.69</b>	8498
Switching Tech	75.07	64.9	<b>15.67</b>	15972
A-1	38.85	33.6	<b>15.63</b>	1807263
Jaro Insti Tech	533.25	461.35	<b>15.58</b>	41942
Cranex	67	58.76	<b>14.02</b>	16342
MKP Mobility	131	115	<b>13.91</b>	27
Shanthi Gears	474.35	418	<b>13.48</b>	17365
IB Infotech Ent	359	317.15	<b>13.2</b>	801
Forbes Gokak	409.9	363.3	<b>12.83</b>	12664
Betex	282.95	251	<b>12.73</b>	461
Suraj Products	207.9	184.7	<b>12.56</b>	3787
Sharp India	42	37.37	<b>12.39</b>	4382



Nifty 50 stocks - Summary Details											
Symbol	LTP	Chng	% Chng	Volume (lacs)	Turnover (crs.)	52w High	Diff with 52w H	52w Low	Diff with 52w L	30 days % chng	365 days % chng
NIFTY 50	25289.90	132.40	0.53%	4863.60	34581.23	26373.20	4.11%	21743.65	16.31%	-3.12%	7.77%
ADANIENT	2088.20	56.00	2.76%	9.43	196.15	2616.50	20.19%	1967.52	6.13%	-9.24%	-16.81%
ADANIPTS	1416.10	37.50	2.72%	16.89	238.25	1549.00	8.58%	1010.75	40.10%	-7.87%	20.01%
APOLLOHOSP	6804.00	-22.50	-0.33%	7.15	488.08	8099.50	15.99%	6001.00	13.38%	-2.65%	0.67%
ASIANPAINT	2704.20	43.10	1.62%	12.90	348.81	2985.70	9.43%	2124.75	27.27%	-4.96%	16.69%
AXISBANK	1291.40	6.50	0.51%	59.49	768.04	1327.00	2.68%	933.50	38.34%	4.41%	30.04%
BAJAJ-AUTO	9387.00	208.00	2.27%	1.94	179.94	9888.00	5.07%	7089.35	32.41%	1.97%	7.43%
BAJAJFINSV	1995.00	35.10	1.79%	10.67	211.62	2195.00	9.11%	1617.00	23.38%	-4.11%	12.95%
BAJFINANCE	945.00	8.75	0.93%	55.19	519.17	1102.50	14.29%	726.00	30.17%	-7.15%	-87.42%
BEL	417.80	15.15	3.76%	197.58	817.95	436.00	4.17%	240.25	73.90%	2.49%	40.89%
BHARTIARTL	2007.90	11.80	0.59%	67.22	1345.99	2174.50	7.66%	1559.50	28.75%	-4.84%	21.63%
CIPLA	1374.00	4.40	0.32%	15.37	211.12	1673.00	17.87%	1335.00	2.92%	-9.72%	-5.25%
COALINDIA	423.00	8.95	2.16%	114.87	485.49	442.00	4.30%	349.25	21.12%	7.38%	6.98%
DRREDDY	1218.60	61.40	5.31%	64.64	785.39	1379.70	11.68%	1020.00	19.47%	-9.47%	-11.15%
EICHERMOT	7046.00	-94.00	-1.32%	3.66	261.32	7613.50	7.45%	4646.00	51.66%	-1.07%	42.32%
ETERNAL	276.50	-7.00	-2.47%	1549.75	4438.17	368.45	24.96%	194.80	41.94%	-0.89%	#VALUE!
GRASIM	2787.60	52.00	1.90%	8.70	241.80	2977.80	6.39%	2301.65	21.11%	-2.73%	13.89%
HCLTECH	1700.00	17.50	1.04%	18.53	314.45	1831.45	7.18%	1302.75	30.49%	2.44%	-6.33%
HDFCBANK	921.00	0.65	0.07%	444.44	4082.45	1020.50	9.75%	812.73	13.32%	-6.61%	-44.26%
HDFCLIFE	724.35	-	#VALUE!	23.75	171.99	820.75	11.75%	595.25	21.69%	-5.49%	14.24%
HINDALCO	945.00	5.80	0.62%	61.66	581.36	970.80	2.66%	546.45	72.93%	10.23%	51.94%
HINDUNILVR	2396.10	28.10	1.19%	17.46	415.72	2750.00	12.87%	2136.00	12.18%	3.86%	0.97%
ICICIBANK	1347.00	-2.00	-0.15%	171.80	2311.40	1500.00	10.20%	1186.00	13.58%	-0.38%	9.41%
INDIGO	4929.00	71.50	1.47%	12.82	629.50	6232.50	20.91%	3945.00	24.94%	-5.74%	18.06%
INFY	1662.80	8.40	0.51%	62.29	1034.65	1924.00	13.58%	1307.00	27.22%	0.96%	-8.76%
ITC	325.55	0.80	0.25%	186.22	605.43	471.50	30.95%	321.05	1.40%	-19.03%	-25.81%
JIOFIN	263.60	0.35	0.13%	122.81	323.98	338.60	22.15%	198.65	32.70%	-11.35%	-4.52%
JSWSTEEL	1183.40	8.80	0.75%	14.29	169.05	1223.90	3.31%	901.10	31.33%	8.80%	27.79%
KOTAKBANK	427.10	5.50	1.30%	100.87	428.78	460.38	7.23%	372.55	14.64%	-80.48%	-78.05%
LT	3797.90	31.40	0.83%	18.57	701.71	4195.00	9.47%	2965.30	28.08%	-7.54%	4.83%
M&M	3578.00	24.70	0.70%	21.07	751.56	3839.90	6.82%	2425.00	47.55%	-1.40%	23.03%
MARUTI	15735.00	-35.00	-0.22%	3.52	557.12	17370.00	9.41%	11059.45	42.28%	-3.92%	31.20%
MAXHEALTH	999.50	-4.70	-0.47%	25.29	252.48	1314.30	23.95%	940.05	6.32%	-6.66%	-5.70%
NESTLEIND	1309.00	25.80	2.01%	9.94	128.97	1332.70	1.78%	1055.00	24.08%	3.12%	-42.04%
NTPC	342.80	4.10	1.21%	58.86	200.79	371.45	7.71%	292.80	17.08%	5.88%	0.79%
ONGC	243.50	1.13	0.47%	107.46	262.49	269.35	9.60%	205.00	18.78%	4.07%	-10.02%
POWERGRID	259.45	3.65	1.43%	155.20	399.76	322.00	19.43%	247.30	4.91%	-2.90%	-16.47%
RELIANCE	1404.10	-0.50	-0.04%	157.21	2206.94	1611.80	12.89%	1114.85	25.95%	-10.25%	7.60%
SBILIFE	2024.90	-30.50	-1.48%	18.29	370.13	2109.60	4.01%	1372.55	47.53%	1.33%	37.05%
SBIN	1050.20	21.55	2.09%	120.01	1255.86	1055.50	0.50%	680.00	54.44%	4.93%	32.01%
SHRIRAMFIN	1007.00	21.00	2.13%	72.11	720.74	1025.60	1.81%	508.15	98.17%	9.35%	90.83%
SUNPHARMA	1635.50	22.60	1.40%	22.80	371.04	1851.20	11.65%	1548.00	5.65%	-7.56%	-9.30%
TATACONSUM	1175.00	11.40	0.98%	14.95	175.89	1220.90	3.76%	930.10	26.33%	-1.72%	21.17%
TMPV	347.30	8.05	2.37%	107.13	372.46	786.65	55.85%	335.95	3.38%	-3.80%	#VALUE!
TATASTEEL	189.40	4.99	2.71%	356.77	672.16	191.00	0.84%	124.74	51.84%	9.32%	40.07%
TCS	3152.20	29.60	0.95%	22.70	713.29	4191.35	24.79%	2866.60	9.96%	-4.86%	-23.42%
TECHM	1690.30	3.60	0.21%	31.24	530.26	1736.40	2.65%	1209.40	39.76%	4.60%	0.72%
TITAN	4022.10	-57.10	-1.40%	8.19	329.75	4312.10	6.73%	2925.00	37.51%	3.79%	20.61%
TRENT	3810.00	45.60	1.21%	11.66	442.70	6270.40	39.24%	3693.10	3.17%	-7.33%	-38.19%
ULTRACEMCO	12350.00	119.00	0.97%	2.86	353.40	13097.00	5.70%	10047.85	22.91%	6.39%	15.12%
WIPRO	241.15	1.60	0.67%	85.38	205.66	324.60	25.71%	228.00	5.77%	-9.42%	-20.22%

## Disclaimer / Disclosures

### ANALYST CERTIFICATION

I, Mrs. Vaishali Parekh B.com, Research Analyst, author and the name subscribed to this report, hereby certify that all of the views expressed in this research report accurately reflect our views about the subject issuer(s) or securities. We also certify that no part of our compensation was, is, or will be directly or indirectly related to the specific recommendation(s) or view(s) in this report.

Terms & conditions and other disclosures:

Prabhudas Lilladher Pvt. Ltd, Mumbai, India (hereinafter referred to as “PL”) is engaged in the business of Stock Broking, Portfolio Manager, Depository Participant and distribution for third party financial products. PL is a subsidiary of Prabhudas Lilladher Advisory Services Pvt Ltd. which has its various subsidiaries engaged in business of commodity broking, investment banking, financial services (margin funding) and distribution of third party financial/other products, details in respect of which are available at [www.plindia.com](http://www.plindia.com)

This document has been prepared by the Research Division of PL and is meant for use by the recipient only as information and is not for circulation. This document is not to be reported or copied or made available to others without prior permission of PL. It should not be considered or taken as an offer to sell or a solicitation to buy or sell any security.

The information contained in this report has been obtained from sources that are considered to be reliable. However, PL has not independently verified the accuracy or completeness of the same. Neither PL nor any of its affiliates, its directors or its employees accepts any responsibility of whatsoever nature for the information, statements and opinion given, made available or expressed herein or for any omission therein.

Recipients of this report should be aware that past performance is not necessarily a guide to future performance and value of investments can go down as well. The suitability or otherwise of any investments will depend upon the recipient's particular circumstances and, in case of doubt, advice should be sought from an independent expert/advisor.

Either PL or its affiliates or its directors or its employees or its representatives or its clients or their relatives may have position(s), make market, act as principal or engage in transactions of securities of companies referred to in this report and they may have used the research material prior to publication.

PL may from time to time solicit or perform investment banking or other services for any company mentioned in this document.

PL is registered as Research Analyst under Securities and Exchange Board of India (Research Analysts) Regulations, 2014 PL submits that no material disciplinary action has been taken on us by any Regulatory Authority impacting Equity Research Analysis activities.

PL or its research analysts or its associates or his relatives do not have any financial interest in the subject company.

PL or its research analysts or its associates or his relatives do not have actual/beneficial ownership of one per cent or more securities of the subject company at the end of the month immediately preceding the date of publication of the research report.

PL or its research analysts or its associates or his relatives do not have any material conflict of interest at the time of publication of the research report.

PL or its associates might have received compensation from the subject company in the past twelve months.

PL or its associates might have managed or co-managed public offering of securities for the subject company in the past twelve months or mandated by the subject company for any other assignment in the past twelve months.

PL or its associates might have received any compensation for investment banking or merchant banking or brokerage services from the subject company in the past twelve months.

PL or its associates might have received any compensation for products or services other than investment banking or merchant banking or brokerage services from the subject company in the past twelve months PL or its associates might have received any compensation or other benefits from the subject company or third party in connection with the research report.

PL encourages independence in research report preparation and strives to minimize conflict in preparation of research report. PL or its analysts did not receive any compensation or other benefits from the subject Company or third party in connection with the preparation of the research report. PL or its Research Analysts do not have any material conflict of interest at the time of publication of this report.

It is confirmed that Mrs. Vaishali Parekh B.com, Research Analyst of this report has not received any compensation from the companies mentioned in the report in the preceding twelve months compensation of our Research Analysts is not based on any specific merchant banking, investment banking or brokerage service transactions.

The Research analysts for this report certifies that all of the views expressed in this report accurately reflect his or her personal views about the subject company or companies and its or their securities, and no part of his or her compensation was, is or will be, directly or indirectly related to specific recommendations or views expressed in this report.

The research analysts for this report has not served as an officer, director or employee of the subject company PL or its research analysts have not engaged in market making activity for the subject company

Our sales people, traders, and other professionals or affiliates may provide oral or written market commentary or trading strategies to our clients that reflect opinions that are contrary to the opinions expressed herein, and our proprietary trading and investing businesses may make investment decisions that are inconsistent with the recommendations expressed herein. In reviewing these materials, you should be aware that any or all of the foregoing, among other things, may give rise to real or potential conflicts of interest.

PL and its associates, their directors and employees may (a) from time to time, have a long or short position in, and buy or sell the securities of the subject company or (b) be engaged in any other transaction involving such securities and earn brokerage or other compensation or act as a market maker in the financial instruments of the subject company or act as an advisor or lender/borrower to the subject company or may have any other potential conflict of interests with respect to any recommendation and other related information and opinions.

**Regd. Office:** 3<sup>rd</sup> Floor, Sadhana House, 570, P. B. Marg, Behind Mahindra Tower, Worli, Mumbai - 400 018, India.