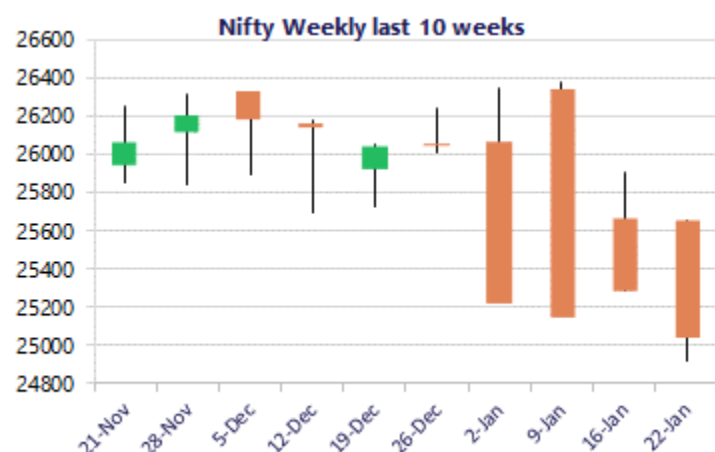
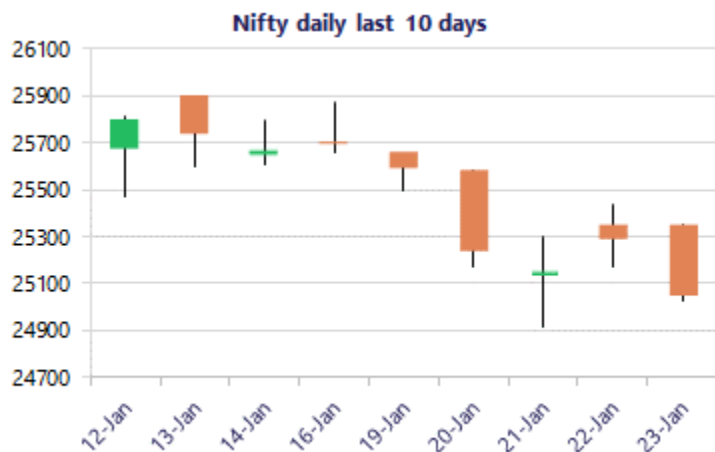


Date: 27th January 2026

* Sensex 81537.70 - 769.67

* Nifty 25048.65 - 241.25

* Bank Nifty 58473.10 - 727.00



*Blue candle → Close rate > Open rate * Red candle → Close rate < Open rate

Market Preview

Nifty ends near 25000 zone with weak bias

Nifty once again tanked failing to move past the 25350-25400 zone and is currently precariously placed indicating a bearish candle on the daily chart with sentiment maintained with a cautious approach. BankNifty slipped down heavily to close below the important support at 58800 level with overall bias turning weak as of now. The market breadth was weak once again with the advance decline indicating a ratio of 1:3 at close.

Market Forecast

Nifty daily range 25100-25500

Nifty, once again indicated a big bearish candle with heavy selling pressure witnessed on the back of weak global cues to end the session near the low at 25050 level with bias and sentiment maintained with a very cautious approach as of now. The index would have the psychological support near 25000 zone failing which, can trigger for intensified selling pressure with the trend turning weak and would have the next support positioned near the 24400 zone. On the upside a decisive breach above the 25500 level is necessary to establish conviction and clarity.

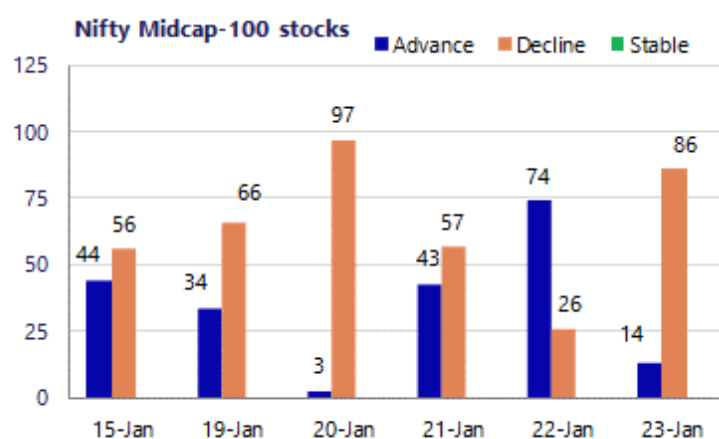
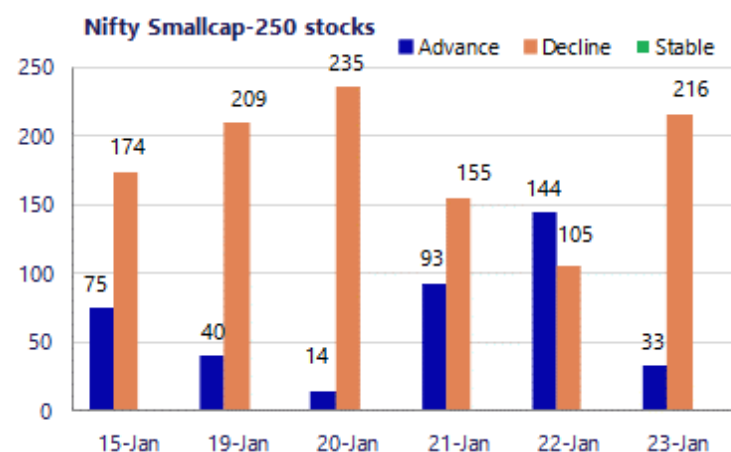
BankNifty once again tanked below the important 50EMA level at 59000 zone to weaken the bias and with a huge bearish candle formation on the daily chart has ended near the low breaking below the important support at 58800 level. The index would have the next major and crucial support near the important 200 period MA at 56600 zone and on the upside, would need a decisive move past the 100 period MA at 59500 zone to expect for some stability and conviction for the coming days.

The support for the day is seen at 24900 levels, while the resistance is seen at 25300 levels. BankNifty would have the daily range of 58000-59000 levels.

Sensex	Period	Closing	% Chng	Trend	Reversal	2 Sup	1 Sup	Pivot	1 Res	2 Res
Nifty	Daily	25048.65	-0.95%	-12	25166.15	24818	24933	25141	25256	25463
	Weekly	25048.65	-2.51%	-3	26079.50	24477	24763	25208	25494	25939
	Monthly	26129.60	-0.28%	3	25829.00	25419	25774	26050	26405	26681
Bank Nifty	Daily	58473.10	-1.23%	-4	59319.20	57686	58080	58740	59133	59794
	Weekly	58473.10	-2.70%	-3	60835.70	57150	57812	58953	59614	60755
	Monthly	59581.85	-0.29%	3	58708.70	58069	58825	59469	60226	60870
Sensex	Daily	81537.70	-0.94%	-13	81868.90	80797	81168	81842	82212	82886
	Weekly	81537.70	-2.43%	-3	84869.30	79689	80613	82054	82978	84419
	Monthly	85220.60	-0.57%	3	84363.05	83208	84214	85159	86166	87111

Gainers - Losers (Nifty 500 Stocks)

Gainers				Losers			
Company Name	Last Price	% Gain	Volume	Company Name	Last Price	% Loss	Volume
Tanla Platforms	481	7.29%	22732701	Syngene Intl	543.80	-8.23%	4137761
Home First	1,112.80	6.12%	3109873	Poonawalla Fin	414.4	-7.44%	2493189
Bandhan Bank	149.33	4.82%	66058893	Tejas Networks	304.05	-5.90%	1822791
Hind Zinc	698.70	4.56%	32420521	Reliance Power	28.27	-5.67%	54009912
Sobha	1,381.80	2.84%	152133	Rattanindia Ent	32.94	-5.59%	2530502
GNFC	464.20	2.79%	314844	UTI AMC	974.6	-5.34%	139183
Alivus Life	883.50	2.55%	208914	R R Kabel	1351.6	-5.13%	114562



Nifty Daily chart with RSI indicator



BankNifty Daily chart with RSI indicator

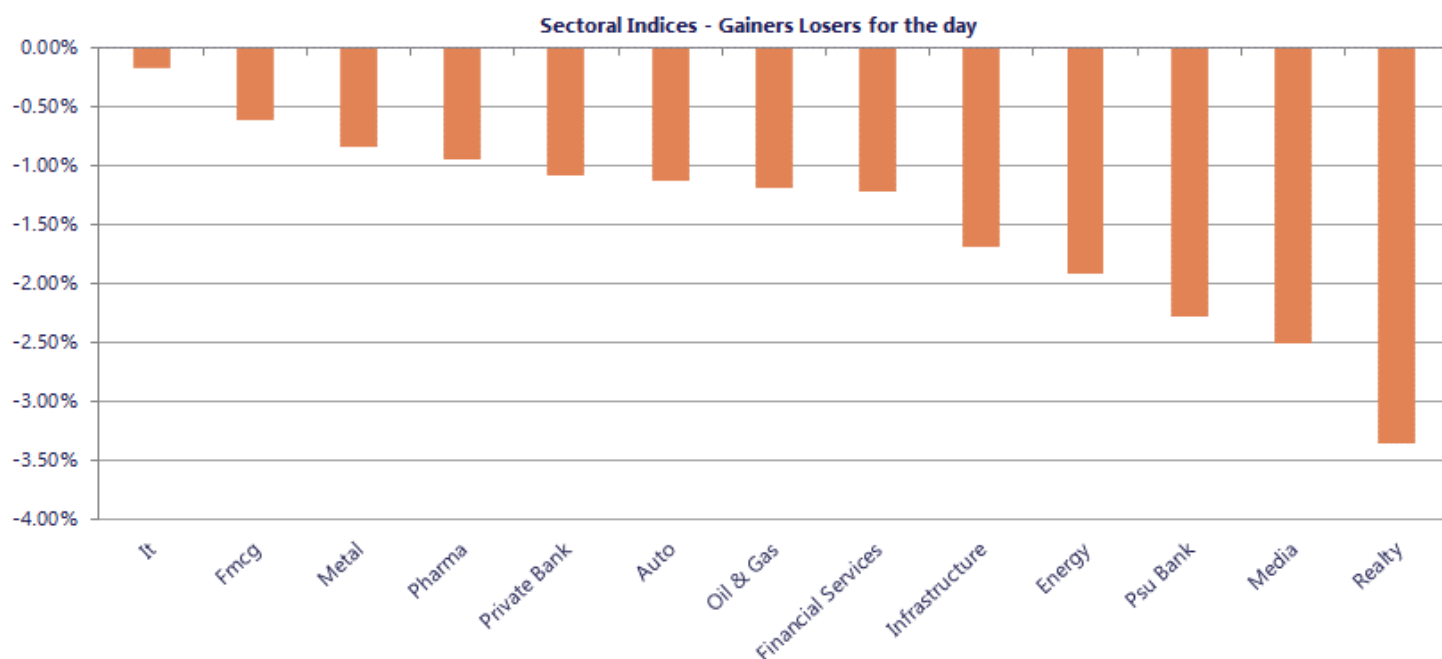


Breakouts - Cross above 200 DMA			
Company Name	LCP	Change %	200 DMA
Jindal Poly Inv	994.2	8.93	912.67
Antony Waste	570.75	3.13	553.44
MYMUDRA	83.2	2.58	81.11
Ind Motor Parts	1072.9	2.02	1051.69
Intense Tech	106.61	1.83	104.69
Hindprakash Ind	135.85	1.74	133.53
Ramcoind	302.75	1.22	299.09
Orissa Bengal C	55.8	1.01	55.24
Balaji Phosphat	140	0.58	139.19
DDEVPLASTIK	294.9	0.19	294.34
Satin Credit	152.13	0.08	152.01

Breakdown - Cross below 200 DMA			
Company Name	LCP	Change %	200 DMA
LE Travenues Te	204.55	-11.55	231.26
Adani Trans	812.7	-9.77	900.66
Poonawalla Fin	414.4	-7.20	446.53
Adani Ports	1308.4	-6.77	1403.42
Bigbloc Constru	57.69	-6.01	61.38
Garuda Const	159.28	-5.27	168.14
Sanghi Ind	60.44	-5.25	63.79
Strides Pharma	796.25	-4.94	837.67
Barak Vally Cem	41.37	-4.01	43.1
BLACK BOX	479.55	-3.84	498.69
Good Luck	1022.9	-3.73	1062.52
ABS Marine	175.15	-3.48	181.46
Sukhjit Starch	171.52	-3.47	177.68
Authum Invest	521.8	-3.07	538.34
BlackBuck	536	-3.06	552.91
Shree Pushkar	339.95	-3.04	350.62
HINDPETRO	414.85	-2.95	427.48
BHEL	242.5	-2.92	249.79

* Stocks crossing above its Simple Moving Average (200DMA)

* Stocks crossing below its Simple Moving Average (200DMA)



Stocks witnessing a volume surge as compared to their 5 day average

Watch out for the stocks that have seen a huge spurt in its share price over the last three days

Volume Shockers - NSE					
Company name	LCP	% Chg	Volume	Avg Vol *	% Chg
Everest Kanto	114	12.7	5288445	9202	57369
HG Infra Engg	605.05	-8.77	572169	7737	7296
India Shelter	770.2	-1.34	509135	7749	6471
Krishna Institu	581.05	-2.95	267703	4103	6425
Tanla Platforms	472.7	5.38	2398144	37412	6310
Pidilite Ind	1449	-0.22	1845226	28822	6302
Garware Technic	601.55	-0.29	51239	1015	4946
Swarnsarita Jew	37.51	19.99	423476	8861	4679
Kalpataru	338.85	0.53	126927	3203	3863
CAMS	680.3	-3.87	652099	17654	3594
Pankaj Polymers	72.38	4.99	166062	5512	2913
SUMITOMO	417	-5.22	255508	9385	2623
Carborundum	810.25	-0.51	235183	8813	2569
Adani Green Ene	779.2	-13.84	1949949	85550	2179
LE Travenues Te	204	-13.52	983657	45184	2077
Innova Captab	678.5	3.28	140099	7040	1890
PB Fintech	1715	0.03	439164	23148	1797
Bandhan Bank	148.4	4.03	3954675	215164	1738
Swadeshi Ind	124.15	4.99	110145	6165	1687
Kajaria Ceramic	944.8	-4.91	266880	15234	1652
CreditAccess Gr	1384.6	-4.53	251884	14933	1587

Price Shockers - NSE				
Company name	LCP	Prv Close	% Chg	Volume
Lotus Chocolate	800.6	571.5	40.09	136265
ANTELOPUS	525	413.65	26.92	176985
Garnet Intl	58.01	46.94	23.58	137891
Shiva Texyarn	189.45	157.15	20.55	1
Forbes Gokak	435	363.45	19.69	37866
Ashish Polyplas	36.19	30.34	19.28	2776
NK Industries	76	64.6	17.65	40
Swarnsarita Jew	37.51	32.06	17	423476
Mercury Ev-Tech	36.37	31.11	16.91	1276303
Cranex	70	60.05	16.57	28154
Rallis India	268.25	230.45	16.4	269417
Omega Int Tech	512.8	443	15.76	4128
Thrive Future	125	108	15.74	53024
Softbpo Global	332.4	287.2	15.74	3900
Ecoboard Inds	58.47	50.52	15.74	25369
Pankaj Polymers	72.38	62.54	15.73	166062
Amit Securities	53.28	46.04	15.73	1331
Citi Port Fin	38.2	33.01	15.72	463
Classic Leasing	41.77	36.1	15.71	53
A-1	40.75	35.25	15.6	2135924
Jindal Photo	1514.45	1312.9	15.35	8193

Nifty 50 stocks - Summary Details											
Symbol	LTP	Chng	% Chng	Volume (lacs)	Turnover (crs.)	52w High	Diff with 52w H	52w Low	Diff with 52w L	30 days % chng	365 days % chng
NIFTY 50	25048.65	-241.25	-0.95%	3939.04	31842.49	26373.20	5.02%	21743.65	15.20%	-3.37%	9.84%
ADANIENT	1861.80	-224.60	-10.76%	74.91	1438.36	2616.50	28.84%	1848.00	0.75%	-7.82%	-12.49%
ADANIPTS	1314.90	-99.30	-7.02%	63.80	849.82	1549.00	15.11%	1010.75	30.09%	-6.26%	27.84%
APOLLOHOSP	6813.00	16.00	0.24%	4.58	311.13	8099.50	15.88%	6001.00	13.53%	-3.64%	-1.77%
ASIANPAINT	2704.40	0.60	0.02%	17.87	490.11	2985.70	9.42%	2124.75	27.28%	-3.70%	19.62%
AXISBANK	1253.90	-40.90	-3.16%	88.85	1128.62	1327.00	5.51%	933.50	34.32%	5.00%	33.46%
BAJAJ-AUTO	9422.00	52.00	0.55%	2.04	192.82	9888.00	4.71%	7089.35	32.90%	2.25%	10.64%
BAJAJFINSV	1954.90	-38.20	-1.92%	10.47	205.72	2195.00	10.94%	1617.00	20.90%	-2.77%	16.08%
BAJFINANCE	929.50	-13.35	-1.42%	65.34	610.95	1102.50	15.69%	726.00	28.03%	-6.44%	-87.07%
BEL	412.40	-4.90	-1.17%	127.15	524.74	436.00	5.41%	240.25	71.65%	4.60%	49.57%
BHARTIARTL	1988.00	-14.20	-0.71%	43.41	865.58	2174.50	8.58%	1559.50	27.48%	-6.77%	23.13%
CIPLA	1322.30	-48.10	-3.51%	65.90	880.57	1673.00	20.96%	1303.00	1.48%	-9.42%	-4.03%
COALINDIA	418.05	-5.15	-1.22%	65.20	273.70	442.00	5.42%	349.25	19.70%	9.57%	10.92%
DRREDDY	1238.40	20.90	1.72%	38.89	482.17	1379.70	10.24%	1020.00	21.41%	-5.13%	-5.48%
EICHERMOT	6970.00	-79.00	-1.12%	3.66	256.58	7613.50	8.45%	4646.00	50.02%	-3.33%	41.83%
ETERNAL	260.05	-15.85	-5.74%	857.56	2267.98	368.45	29.42%	194.80	33.50%	-3.77%	#VALUE!
GRASIM	2766.00	-21.60	-0.77%	6.06	168.00	2977.80	7.11%	2301.65	20.17%	-0.79%	17.74%
HCLTECH	1706.60	3.50	0.21%	18.74	320.49	1831.45	6.82%	1302.75	31.00%	1.96%	-5.51%
HDFCBANK	915.80	-2.90	-0.32%	309.84	2839.53	1020.50	10.26%	812.73	12.68%	-6.99%	-44.06%
HDFCLIFE	712.30	-12.80	-1.77%	32.33	231.83	820.75	13.21%	595.25	19.66%	-4.82%	16.20%
HINDALCO	951.00	6.55	0.69%	59.59	569.24	970.80	2.04%	546.45	74.03%	9.24%	53.58%
HINDUNILVR	2406.00	15.40	0.64%	13.78	333.03	2750.00	12.51%	2136.00	12.64%	4.42%	2.14%
ICICIBANK	1346.00	0.50	0.04%	140.56	1891.07	1500.00	10.27%	1186.00	13.49%	-1.68%	12.49%
INDIGO	4715.00	-194.00	-3.95%	36.68	1748.45	6232.50	24.35%	3945.00	19.52%	-4.60%	22.43%
INFY	1672.00	8.50	0.51%	58.69	979.45	1924.00	13.10%	1307.00	27.93%	-1.54%	-7.62%
ITC	323.00	-1.85	-0.57%	119.49	387.71	471.50	31.50%	321.05	0.61%	-19.33%	-25.76%
JIOFIN	253.20	-9.40	-3.58%	148.48	381.81	338.60	25.22%	198.65	27.46%	-12.10%	0.96%
JSWSTEEL	1165.40	-19.00	-1.60%	24.07	282.58	1223.90	4.78%	901.10	29.33%	8.17%	27.79%
KOTAKBANK	424.20	-1.80	-0.42%	105.47	447.49	460.38	7.86%	372.55	13.86%	-80.18%	-77.50%
LT	3750.00	-43.80	-1.15%	18.99	711.58	4195.00	10.61%	2965.30	26.46%	-6.84%	7.14%
M&M	3555.00	-18.70	-0.52%	19.23	684.62	3839.90	7.42%	2425.00	46.60%	-1.19%	26.67%
MARUTI	15519.00	-246.00	-1.56%	3.39	526.65	17370.00	10.66%	11059.45	40.32%	-5.31%	32.66%
MAXHEALTH	991.40	-7.40	-0.74%	23.01	229.29	1314.30	24.57%	940.05	5.46%	-7.31%	-7.36%
NESTLEIND	1295.40	-10.60	-0.81%	7.44	96.59	1332.70	2.80%	1055.00	22.79%	3.88%	-40.54%
NTPC	337.00	-5.45	-1.59%	100.84	343.04	371.45	9.27%	292.80	15.10%	6.78%	5.60%
ONGC	246.10	2.09	0.86%	80.78	197.87	266.39	7.62%	205.00	20.05%	4.20%	-8.20%
POWERGRID	253.95	-5.30	-2.04%	180.22	458.75	322.00	21.13%	247.30	2.69%	-2.17%	-14.26%
RELIANCE	1387.00	-15.50	-1.11%	98.36	1368.54	1611.80	13.95%	1114.85	24.41%	-10.97%	10.11%
SBILIFE	2005.20	-16.80	-0.83%	11.29	225.74	2109.60	4.95%	1372.55	46.09%	-0.01%	37.87%
SBIN	1028.40	-19.95	-1.90%	109.16	1133.81	1055.50	2.57%	680.00	51.24%	7.60%	38.11%
SHRIRAMFIN	1005.00	-0.50	-0.05%	90.24	905.99	1025.60	2.01%	508.15	97.78%	7.56%	93.25%
SUNPHARMA	1633.00	-1.20	-0.07%	16.79	274.37	1851.20	11.79%	1548.00	5.49%	-7.66%	-7.29%
TATACONSUM	1155.00	-20.20	-1.72%	14.57	170.04	1220.90	5.40%	930.10	24.18%	-0.31%	20.89%
TMPV	345.00	-2.30	-0.66%	83.53	289.06	765.45	54.93%	335.95	2.69%	-3.30%	#VALUE!
TATASTEEL	187.60	-1.50	-0.79%	284.88	540.73	192.40	2.49%	124.74	50.39%	11.75%	45.80%
TCS	3157.00	6.60	0.21%	20.69	657.15	4191.35	24.68%	2866.60	10.13%	-5.25%	-21.94%
TECHM	1700.70	13.30	0.79%	18.32	311.76	1736.40	2.06%	1209.40	40.62%	2.47%	2.86%
TITAN	4020.20	1.60	0.04%	10.15	409.94	4312.10	6.77%	2925.00	37.44%	2.16%	19.84%
TRENT	3748.00	-55.80	-1.47%	4.74	179.14	6270.40	40.23%	3693.10	1.49%	-9.58%	-33.70%
ULTRACEMCO	12346.00	-18.00	-0.15%	3.56	443.36	13097.00	5.73%	10047.85	22.87%	7.21%	15.90%
WIPRO	238.05	-2.60	-1.08%	135.44	324.94	324.60	26.66%	228.00	4.41%	-11.74%	-19.34%

Disclaimer / Disclosures

ANALYST CERTIFICATION

I, Mrs. Vaishali Parekh B.com, Research Analyst, author and the name subscribed to this report, hereby certify that all of the views expressed in this research report accurately reflect our views about the subject issuer(s) or securities. We also certify that no part of our compensation was, is, or will be directly or indirectly related to the specific recommendation(s) or view(s) in this report.

Terms & conditions and other disclosures:

Prabhudas Lilladher Pvt. Ltd, Mumbai, India (hereinafter referred to as "PL") is engaged in the business of Stock Broking, Portfolio Manager, Depository Participant and distribution for third party financial products. PL is a subsidiary of Prabhudas Lilladher Advisory Services Pvt Ltd. which has its various subsidiaries engaged in business of commodity broking, investment banking, financial services (margin funding) and distribution of third party financial/other products, details in respect of which are available at www.plindia.com

This document has been prepared by the Research Division of PL and is meant for use by the recipient only as information and is not for circulation. This document is not to be reported or copied or made available to others without prior permission of PL. It should not be considered or taken as an offer to sell or a solicitation to buy or sell any security.

The information contained in this report has been obtained from sources that are considered to be reliable. However, PL has not independently verified the accuracy or completeness of the same. Neither PL nor any of its affiliates, its directors or its employees accepts any responsibility of whatsoever nature for the information, statements and opinion given, made available or expressed herein or for any omission therein.

Recipients of this report should be aware that past performance is not necessarily a guide to future performance and value of investments can go down as well. The suitability or otherwise of any investments will depend upon the recipient's particular circumstances and, in case of doubt, advice should be sought from an independent expert/advisor.

Either PL or its affiliates or its directors or its employees or its representatives or its clients or their relatives may have position(s), make market, act as principal or engage in transactions of securities of companies referred to in this report and they may have used the research material prior to publication.

PL may from time to time solicit or perform investment banking or other services for any company mentioned in this document.

PL is registered as Research Analyst under Securities and Exchange Board of India (Research Analysts) Regulations, 2014 PL submits that no material disciplinary action has been taken on us by any Regulatory Authority impacting Equity Research Analysis activities.

PL or its research analysts or its associates or his relatives do not have any financial interest in the subject company.

PL or its research analysts or its associates or his relatives do not have actual/beneficial ownership of one per cent or more securities of the subject company at the end of the month immediately preceding the date of publication of the research report.

PL or its research analysts or its associates or his relatives do not have any material conflict of interest at the time of publication of the research report.

PL or its associates might have received compensation from the subject company in the past twelve months.

PL or its associates might have managed or co-managed public offering of securities for the subject company in the past twelve months or mandated by the subject company for any other assignment in the past twelve months.

PL or its associates might have received any compensation for investment banking or merchant banking or brokerage services from the subject company in the past twelve months.

PL or its associates might have received any compensation for products or services other than investment banking or merchant banking or brokerage services from the subject company in the past twelve months PL or its associates might have received any compensation or other benefits from the subject company or third party in connection with the research report.

PL encourages independence in research report preparation and strives to minimize conflict in preparation of research report. PL or its analysts did not receive any compensation or other benefits from the subject Company or third party in connection with the preparation of the research report. PL or its Research Analysts do not have any material conflict of interest at the time of publication of this report.

It is confirmed that Mrs. Vaishali Parekh B.com, Research Analyst of this report has not received any compensation from the companies mentioned in the report in the preceding twelve months compensation of our Research Analysts is not based on any specific merchant banking, investment banking or brokerage service transactions.

The Research analysts for this report certifies that all of the views expressed in this report accurately reflect his or her personal views about the subject company or companies and its or their securities, and no part of his or her compensation was, is or will be, directly or indirectly related to specific recommendations or views expressed in this report.

The research analysts for this report has not served as an officer, director or employee of the subject company PL or its research analysts have not engaged in market making activity for the subject company

Our sales people, traders, and other professionals or affiliates may provide oral or written market commentary or trading strategies to our clients that reflect opinions that are contrary to the opinions expressed herein, and our proprietary trading and investing businesses may make investment decisions that are inconsistent with the recommendations expressed herein. In reviewing these materials, you should be aware that any or all of the foregoing, among other things, may give rise to real or potential conflicts of interest.

PL and its associates, their directors and employees may (a) from time to time, have a long or short position in, and buy or sell the securities of the subject company or (b) be engaged in any other transaction involving such securities and earn brokerage or other compensation or act as a market maker in the financial instruments of the subject company or act as an advisor or lender/borrower to the subject company or may have any other potential conflict of interests with respect to any recommendation and other related information and opinions.

Regd. Office: 3rd Floor, Sadhana House, 570, P. B. Marg, Behind Mahindra Tower, Worli, Mumbai - 400 018, India.