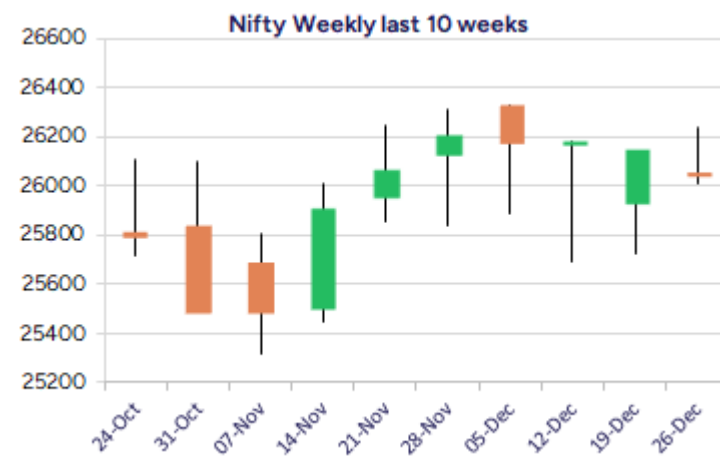
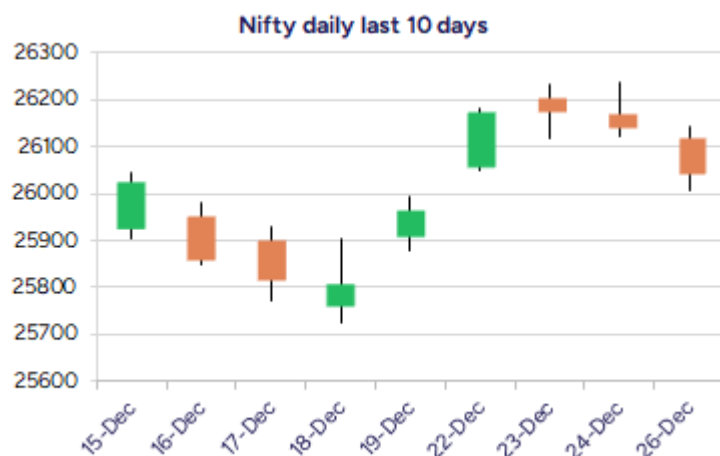


Date: 29th December 2025

* Sensex 85041.45 - 367.25

* Nifty 26042.30 - 99.80

* Bank Nifty 59011.35 - 172.25



*Blue candle → Close rate > Open rate * Red candle → Close rate < Open rate

Market Preview

Nifty slips further to extend losses

Nifty once again witnessed a gradual slide with profit booking seen to extend the losses slipping down for the second consecutive sessions. BankNifty continue to witness the sluggish move slightly losing steam once again having the important support zone positioned near the 58800 zone. The market breadth was weak with the advance decline indicating a ratio of 3:5 at close.

Market Forecast

Nifty daily range 25900-26200

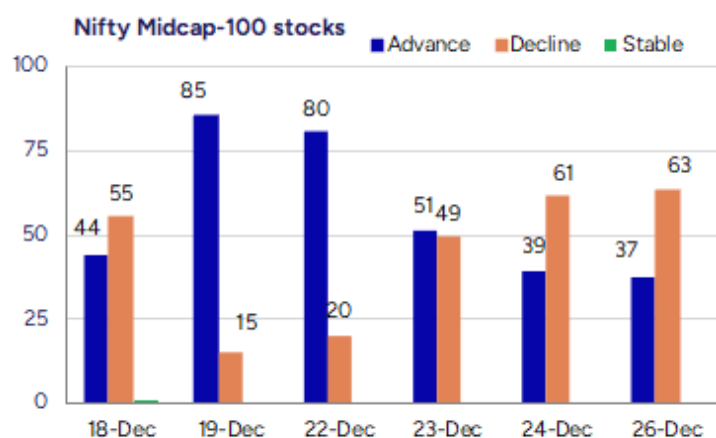
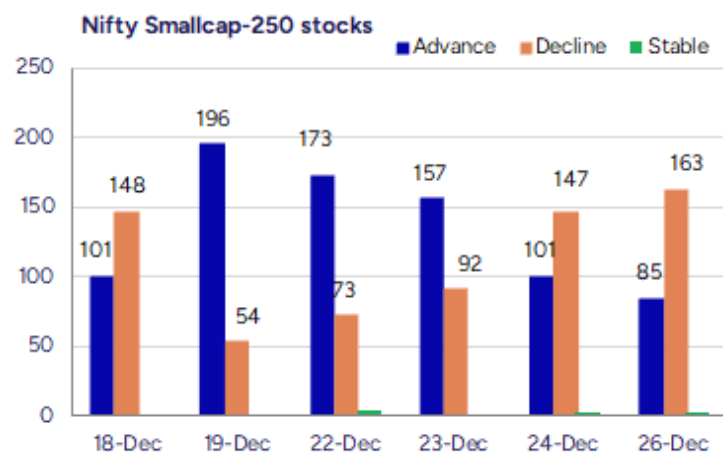
Nifty, once again witnessed some exhaustion and slipped down with a gradual slide as the day progressed to extend the losses and closed near the 26000 zone with bias slightly shaken having the important and crucial support positioned near the 50EMA level at 25850 zone, as mentioned earlier. On the upside, the index needs to clear the near-term hurdle at 26250 level to trigger for fresh upward move having next target expected around the long-term trendline zone at 25450 level.

BankNifty witnessed a gradual slide with bias weakening and overall, with a sluggish rangebound movement continuing, the index is having a consolidation period with the support maintained strong near the 58700 zone as mentioned earlier, and on the upside, desperately, a decisive breach above the 59800 level is much needed to trigger for fresh upward move in the coming days. The support for the day is seen at 25900 levels, while the resistance is seen at 26200 levels. BankNifty would have the daily range of 58800-59600 levels.

Sensex	Period	Closing	% Chng	Trend	Reversal	2 Sup	1 Sup	Pivot	1 Res	2 Res
Nifty	Daily	26042.30	-0.38%	5	26047.10	25929	25986	26065	26121	26201
	Weekly	26042.30	0.29%	-3	26141.10	25869	25956	26095	26182	26322
	Monthly	26202.95	1.87%	2	25767.20	24953	25578	25944	26569	26935
Bank Nifty	Daily	59011.35	-0.29%	-1	59138.60	58813	58912	59046	59146	59280
	Weekly	59011.35	-0.10%	-2	59690.75	58615	58813	59145	59343	59675
	Monthly	59752.70	3.42%	2	58620.10	56200	57976	58935	60712	61671
Sensex	Daily	85041.45	-0.43%	-1	85149.05	84679	84860	85119	85301	85560
	Weekly	85041.45	0.13%	-2	85480.10	84443	84742	85237	85537	86032
	Monthly	85706.67	2.11%	2	84235.40	81429	83568	84811	86950	88193

Gainers - Losers (Nifty 500 Stocks)

Gainers				Losers			
Company Name	Last Price	% Gain	Volume	Company Name	Last Price	% Loss	Volume
Railtel	378.25	6.03%	18228646	Brainbees Solu	285.20	-3.88%	2054930
TITAGARH	897.75	5.05%	5867174	Caplin Labs	1915.8	-2.76%	124900
ITES	252.65	4.14%	6680690	ACME Solar	231.12	-2.51%	905394
Shipping Corp	224.90	3.17%	5425100	Berger Paints	542.05	-2.36%	347451
Ola Electric	36.19	2.38%	94061413	Chola Fin Hold	1,858.40	-2.33%	46665
New India Assur	153.82	2.21%	1976621	Can Fin Homes	925.35	-2.29%	449555
Titan Company	3,992.00	2.12%	1112921	Anant Raj	554.65	-2.14%	1342250



Nifty Daily chart with RSI indicator



BankNifty Daily chart with RSI indicator



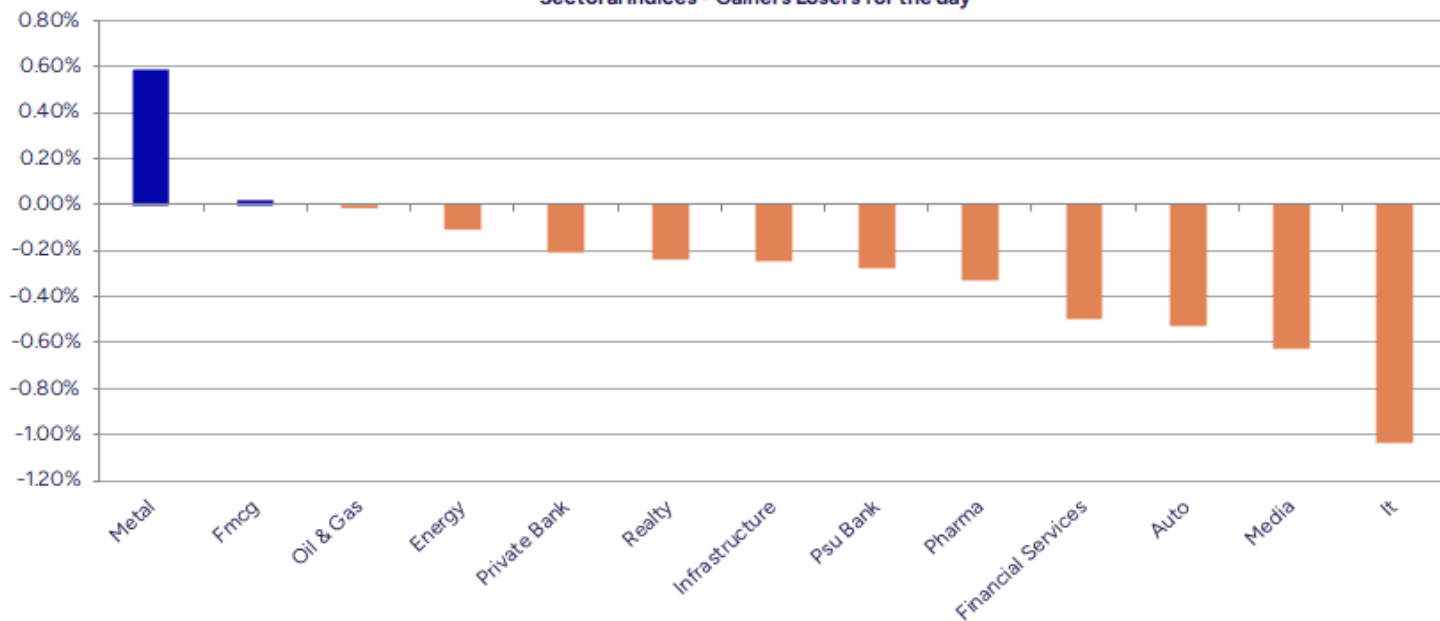
Breakouts - Cross above 200 DMA			
Company Name	LCP	Change %	200 DMA
Rail Vikas	384.55	8.80	353.46
Railtel	382.6	6.07	360.71
Ircon Internati	182.2	5.48	172.73
Indian Railway	133.64	4.96	127.32
Usha Financial	42.35	4.11	40.68
MOIL	364.4	3.88	350.8
Durlax Top Surf	44.3	3.67	42.73
Omaxe	86.75	2.74	84.44
Viaz Tyres	70	2.49	68.3
MMTC	64.65	2.31	63.19
Indef Manufactu	351.05	2.12	343.76
GROWWRAIL	36.33	2.08	35.59
Jupiter Wagons	349.7	2.04	342.7
Quest Lab	100	2.01	98.03
BLAL	212.5	1.91	208.51
Beardsell	31.15	1.90	30.57
Orissa Minerals	5128.7	1.89	5033.6
Paras Defence	701.5	1.76	689.35

* Stocks crossing above its Simple Moving Average (200DMA)

Breakdown - Cross below 200 DMA			
Company Name	LCP	Change %	200 DMA
LLOYDS ENTER	62.71	-3.58	65.04
NK Industries	65.5	-2.57	67.23
COFORGE	1673.3	-2.06	1708.45
Mangalam Alloys	49	-1.90	49.95
Lord's Chloro	169.46	-1.82	172.6
Shankar Lal Ram	68.19	-1.69	69.36
Orchid Pharma	752.4	-1.59	764.59
Viviana Power	733	-1.47	743.96
Responsive Ind	198.49	-1.46	201.44
Ritco Logistics	270.75	-1.46	274.76
Refractory Shap	58	-1.16	58.68
Vinsys IT	382.6	-1.15	387.05
Metro	1145.4	-1.07	1157.73
SBFC Finance	104.49	-1.02	105.57
Berger Paints	542.05	-0.98	547.41
Indraprastha	455.8	-0.96	460.2
ICRA	6170	-0.94	6228.54
Mahindra Logist	322.65	-0.88	325.53

* Stocks crossing below its Simple Moving Average (200DMA)

Sectoral Indices - Gainers Losers for the day



Stocks witnessing a volume surge as compared to their 5 day average volume

Watch out for the stocks that have seen a huge spurt in its share price over the last three days

Volume Shockers - NSE					
Company name	LCP	% Chg	Volume	Avg Vol *	% Chg
Panacea Biotech	407.05	13.54	2669065	4981	53483
20 Microns	216.35	9.02	1534304	3725	41094
JNK India	257.1	13.09	244617	1670	14546
John Cockerill	5053.65	6.27	279692	3578	7717
Craftsman	7370	4.42	85734	1098	7705
STC India	130.3	6.85	288362	4099	6935
MMTC	64.21	11.65	4432189	86610	5017
Sapphire Foods	250.8	-0.59	116250	3102	3648
VIP Industries	386.6	-5.28	498246	13503	3590
Commercial Syn	148.95	-0.13	31656	1063	2879
India Tourism D	590.25	3.57	27777	1071	2493
NEXOME CAPITAL	108.5	7.43	59597	2578	2212
Bhakti Gems	36.6	0.38	487783	22660	2053
Paramount Comm	39.5	4.25	812476	39569	1953
Modi Rubber	167.8	10	91076	4462	1941
VSF Projects	45.54	12.11	41747	2100	1888
Sigma Solve	57.9	1.65	24683	1373	1698
Nagpur Power	117.62	20	67052	3806	1662
HFCL	61.51	-4.19	9747143	655243	1388
PH CAPITAL	342.8	10	70598	5375	1214
Rail Vikas	387.95	12.22	9256215	721087	1184

Price Shockers - NSE				
Company name	LCP	Prv Close	% Chg	Volume
Modi Rubber	167.8	106.1	58.15	91076
PH CAPITAL	342.8	236.15	45.16	70598
Nagpur Power	117.62	83.18	41.4	67052
KR RAIL ENGINE	40.88	30.15	35.59	906597
Omaxe	87.87	67.07	31.01	214089
Shree Metalloys	43.43	35.01	24.05	18798
Cubex Tubings	110.6	91.71	20.6	78720
Sasken Tech	1571.35	1308.3	20.11	14568
GM Breweries	1195.1	999.05	19.62	49612
Deccan Gold	105.3	88.65	18.78	1196760
IIRM Holdings	89.38	75.59	18.24	12693
Mach Conference	110.25	93.45	17.98	139200
Hind Copper	475.45	403.9	17.71	7709297
Oriental RI	173.7	147.6	17.68	228440
Rail Vikas	387.95	332.6	16.64	9256215
Sofcom Systems	46.67	40.14	16.27	409366
VSF Projects	45.54	39.22	16.11	41747
AAYUSH WELLNESS	57.8	49.94	15.74	108645
Esha Media	43.57	37.65	15.72	15160
TeleCanor Glob	36.75	31.76	15.71	226045
Indosolar	521.7	451.35	15.59	41277

Nifty 50 stocks - Summary Details											
Symbol	LTP	Chng	% Chng	Volume (lacs)	Turnover (crs.)	52w High	Diff with 52w H	52w Low	Diff with 52w L	30 days % chng	365 days % chng
NIFTY 50	26042.30	-99.80	-0.38%	1422.16	12261.29	26325.80	1.08%	21743.65	19.77%	0.28%	10.06%
ADANIENT	2231.00	8.30	0.37%	5.66	126.55	2616.50	14.73%	1967.52	13.39%	-8.24%	-4.97%
ADANIPTS	1487.10	-7.20	-0.48%	8.77	130.79	1549.00	4.00%	1010.75	47.13%	0.98%	25.38%
APOLLOHOSP	7159.50	-12.50	-0.17%	2.28	163.67	8099.50	11.61%	6001.00	19.31%	-2.96%	-1.28%
ASIANPAINT	2746.60	-38.90	-1.40%	5.32	146.67	2985.70	8.01%	2124.75	29.27%	-3.17%	22.21%
AXISBANK	1229.00	2.70	0.22%	16.66	204.20	1304.00	5.75%	933.50	31.66%	-3.88%	13.64%
BAJAJ-AUTO	9067.00	-103.00	-1.12%	1.06	96.47	9490.00	4.46%	7089.35	27.90%	3.13%	4.58%
BAJAJFINSV	2020.00	-15.70	-0.77%	17.55	354.10	2195.00	7.97%	1551.65	30.18%	-0.81%	30.21%
BAJFINANCE	998.50	-13.20	-1.30%	52.10	522.30	1102.50	9.43%	679.20	47.01%	0.76%	-85.27%
BEL	398.30	-1.70	-0.43%	132.75	534.30	436.00	8.65%	240.25	65.79%	-3.93%	35.89%
BHARTIARTL	2106.00	-17.70	-0.83%	12.98	273.59	2174.50	3.15%	1559.50	35.04%	-1.80%	33.83%
CIPLA	1504.00	7.70	0.51%	9.52	143.31	1673.00	10.10%	1335.00	12.66%	-1.03%	1.37%
COALINDIA	402.30	-0.05	-0.01%	54.34	219.79	417.25	3.58%	349.25	15.19%	6.39%	5.07%
DRREDDY	1267.30	1.50	0.12%	5.94	75.35	1405.90	9.86%	1020.00	24.25%	1.76%	-5.63%
EICHERMOT	7330.00	17.50	0.24%	1.58	115.58	7360.00	0.41%	4646.00	57.77%	2.49%	53.93%
ETERNAL	281.85	-3.00	-1.05%	157.44	444.71	368.45	23.50%	194.80	44.69%	-5.66%	#VALUE!
GRASIM	2821.00	-5.90	-0.21%	5.06	143.06	2977.80	5.27%	2276.95	23.89%	3.37%	11.90%
HCLTECH	1661.20	-13.50	-0.81%	9.21	152.97	2012.20	17.44%	1302.75	27.51%	4.15%	-12.00%
HDFCBANK	992.00	-5.20	-0.52%	93.60	928.83	1020.50	2.79%	812.15	22.14%	-0.09%	-44.63%
HDFCLIFE	748.10	-7.25	-0.96%	16.55	124.06	820.75	8.85%	584.30	28.03%	-1.13%	21.33%
HINDALCO	873.00	8.55	0.99%	23.35	202.77	882.30	1.05%	546.45	59.76%	11.15%	36.32%
HINDUNILVR	2288.00	5.80	0.25%	5.34	121.86	2750.00	16.80%	2136.00	7.12%	-6.23%	-2.42%
ICICIBANK	1351.00	-8.80	-0.65%	28.11	380.39	1500.00	9.93%	1186.00	13.91%	-0.71%	4.86%
INDIGO	5066.00	-15.50	-0.31%	5.86	296.31	6232.50	18.72%	3945.00	28.42%	-13.04%	14.45%
INFY	1657.00	-6.40	-0.38%	20.06	332.64	1982.80	16.43%	1307.00	26.78%	7.66%	-13.56%
ITC	404.90	-1.70	-0.42%	31.52	127.55	491.00	17.54%	390.15	3.78%	-0.31%	-14.26%
JIOFIN	297.20	-1.70	-0.57%	39.41	117.52	338.60	12.23%	198.65	49.61%	-1.53%	-1.90%
JSWSTEEL	1094.30	3.00	0.27%	13.17	143.63	1223.90	10.59%	880.00	24.35%	-4.30%	16.46%
KOTAKBANK	2161.70	-2.00	-0.09%	7.38	159.69	2301.90	6.09%	1723.75	25.41%	3.64%	23.97%
LT	4051.00	-2.60	-0.06%	5.94	240.15	4140.00	2.15%	2965.30	36.61%	0.71%	11.35%
M&M	3627.00	-9.70	-0.27%	8.30	300.98	3795.00	4.43%	2425.00	49.57%	-3.01%	25.00%
MARUTI	16590.00	-113.00	-0.68%	2.13	353.31	16720.00	0.78%	10725.00	54.69%	4.54%	54.34%
MAXHEALTH	1073.00	-8.40	-0.78%	12.66	135.92	1314.30	18.36%	940.05	14.14%	-8.44%	-5.23%
NESTLEIND	1270.00	10.30	0.82%	14.33	181.95	1311.60	3.17%	1055.00	20.38%	-1.64%	-41.45%
NTPC	324.25	1.70	0.53%	41.74	135.33	371.45	12.71%	292.80	10.74%	-1.26%	-3.33%
ONGC	234.64	0.87	0.37%	37.09	86.95	273.50	14.21%	205.00	14.46%	-5.34%	-2.94%
POWERGRID	265.45	-2.60	-0.97%	60.28	160.50	322.00	17.56%	247.30	7.34%	-3.44%	-14.99%
RELIANCE	1560.00	1.80	0.12%	23.11	360.04	1581.30	1.35%	1114.85	39.93%	0.75%	27.48%
SBILIFE	2017.40	-8.00	-0.39%	1.80	36.30	2086.60	3.32%	1372.55	46.98%	0.14%	44.13%
SBIN	966.50	-2.45	-0.25%	32.86	317.92	999.00	3.25%	680.00	42.13%	-0.38%	18.00%
SHRIRAMFIN	960.40	-13.30	-1.37%	47.39	456.12	983.70	2.37%	493.35	94.67%	18.27%	-66.22%
SUNPHARMA	1720.00	-17.00	-0.98%	25.07	430.26	1910.00	9.95%	1548.00	11.11%	-2.40%	-4.28%
TATACONSUM	1174.00	-5.20	-0.44%	3.23	37.95	1202.80	2.39%	893.10	31.45%	-0.33%	30.62%
TMPV	360.05	0.85	0.24%	85.89	306.90	810.00	55.55%	337.70	6.62%	-0.84%	#VALUE!
TATASTEEL	169.05	-1.02	-0.60%	169.04	285.18	186.94	9.57%	122.62	37.86%	1.23%	20.01%
TCS	3276.80	-42.20	-1.27%	11.76	386.79	4322.95	24.20%	2866.60	14.31%	5.35%	-20.18%
TECHM	1612.50	-19.00	-1.16%	4.61	74.54	1773.60	9.08%	1209.40	33.33%	11.63%	-4.72%
TITAN	3994.00	84.70	2.17%	11.13	442.94	4006.90	0.32%	2925.00	36.55%	0.13%	15.08%
TRENT	4280.00	-9.60	-0.22%	10.30	443.06	7493.05	42.88%	3930.10	8.90%	-1.59%	-38.24%
ULTRACEMCO	11778.00	14.00	0.12%	1.93	228.10	13097.00	10.07%	10047.85	17.22%	0.30%	2.54%
WIPRO	266.25	-1.81	-0.68%	28.99	77.43	324.60	17.98%	228.00	16.78%	9.64%	-12.94%

Disclaimer / Disclosures

ANALYST CERTIFICATION

I, Mrs. Vaishali Parekh B.com, Research Analyst, author and the name subscribed to this report, hereby certify that all of the views expressed in this research report accurately reflect our views about the subject issuer(s) or securities. We also certify that no part of our compensation was, is, or will be directly or indirectly related to the specific recommendation(s) or view(s) in this report.

Terms & conditions and other disclosures:

Prabhudas Lilladher Pvt. Ltd, Mumbai, India (hereinafter referred to as "PL") is engaged in the business of Stock Broking, Portfolio Manager, Depository Participant and distribution for third party financial products. PL is a subsidiary of Prabhudas Lilladher Advisory Services Pvt Ltd. which has its various subsidiaries engaged in business of commodity broking, investment banking, financial services (margin funding) and distribution of third party financial/other products, details in respect of which are available at www.plindia.com

This document has been prepared by the Research Division of PL and is meant for use by the recipient only as information and is not for circulation. This document is not to be reported or copied or made available to others without prior permission of PL. It should not be considered or taken as an offer to sell or a solicitation to buy or sell any security.

The information contained in this report has been obtained from sources that are considered to be reliable. However, PL has not independently verified the accuracy or completeness of the same. Neither PL nor any of its affiliates, its directors or its employees accepts any responsibility of whatsoever nature for the information, statements and opinion given, made available or expressed herein or for any omission therein.

Recipients of this report should be aware that past performance is not necessarily a guide to future performance and value of investments can go down as well. The suitability or otherwise of any investments will depend upon the recipient's particular circumstances and, in case of doubt, advice should be sought from an independent expert/advisor.

Either PL or its affiliates or its directors or its employees or its representatives or its clients or their relatives may have position(s), make market, act as principal or engage in transactions of securities of companies referred to in this report and they may have used the research material prior to publication.

PL may from time to time solicit or perform investment banking or other services for any company mentioned in this document.

PL is registered as Research Analyst under Securities and Exchange Board of India (Research Analysts) Regulations, 2014 PL submits that no material disciplinary action has been taken on us by any Regulatory Authority impacting Equity Research Analysis activities.

PL or its research analysts or its associates or his relatives do not have any financial interest in the subject company.

PL or its research analysts or its associates or his relatives do not have actual/beneficial ownership of one per cent or more securities of the subject company at the end of the month immediately preceding the date of publication of the research report.

PL or its research analysts or its associates or his relatives do not have any material conflict of interest at the time of publication of the research report.

PL or its associates might have received compensation from the subject company in the past twelve months.

PL or its associates might have managed or co-managed public offering of securities for the subject company in the past twelve months or mandated by the subject company for any other assignment in the past twelve months.

PL or its associates might have received any compensation for investment banking or merchant banking or brokerage services from the subject company in the past twelve months.

PL or its associates might have received any compensation for products or services other than investment banking or merchant banking or brokerage services from the subject company in the past twelve months PL or its associates might have received any compensation or other benefits from the subject company or third party in connection with the research report.

PL encourages independence in research report preparation and strives to minimize conflict in preparation of research report. PL or its analysts did not receive any compensation or other benefits from the subject Company or third party in connection with the preparation of the research report. PL or its Research Analysts do not have any material conflict of interest at the time of publication of this report.

It is confirmed that Mrs.Vaishali Parekh B.com, Research Analyst of this report has not received any compensation from the companies mentioned in the report in the preceding twelve months compensation of our Research Analysts is not based on any specific merchant banking, investment banking or brokerage service transactions.

The Research analysts for this report certifies that all of the views expressed in this report accurately reflect his or her personal views about the subject company or companies and its or their securities, and no part of his or her compensation was, is or will be, directly or indirectly related to specific recommendations or views expressed in this report.

The research analysts for this report has not served as an officer, director or employee of the subject company PL or its research analysts have not engaged in market making activity for the subject company

Our sales people, traders, and other professionals or affiliates may provide oral or written market commentary or trading strategies to our clients that reflect opinions that are contrary to the opinions expressed herein, and our proprietary trading and investing businesses may make investment decisions that are inconsistent with the recommendations expressed herein. In reviewing these materials, you should be aware that any or all of the foregoing, among other things, may give rise to real or potential conflicts of interest.

PL and its associates, their directors and employees may (a) from time to time, have a long or short position in, and buy or sell the securities of the subject company or (b) be engaged in any other transaction involving such securities and earn brokerage or other compensation or act as a market maker in the financial instruments of the subject company or act as an advisor or lender/borrower to the subject company or may have any other potential conflict of interests with respect to any recommendation and other related information and opinions.