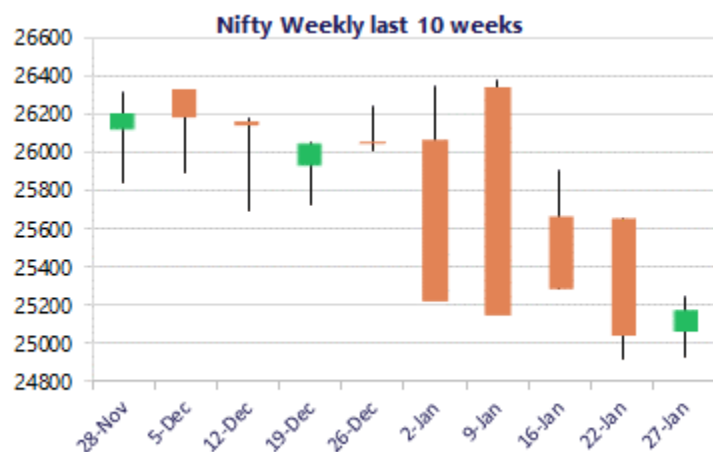
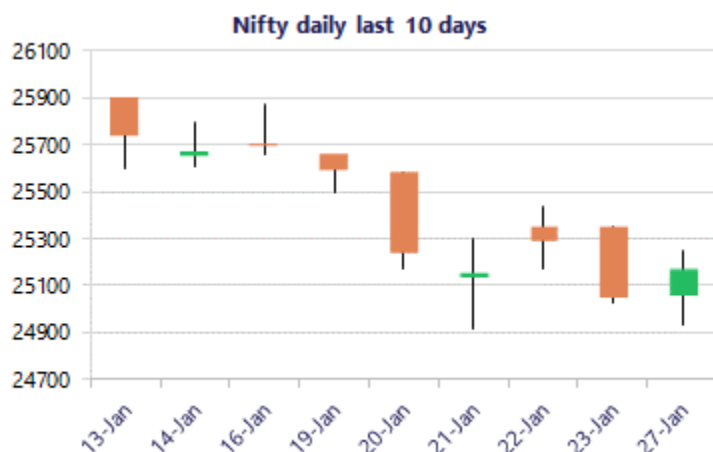


Date: 28th January 2026

* Sensex 81857.48 + 319.78

* Nifty 25175.40 + 126.75

* Bank Nifty 59205.45 + 732.35



*Blue candle → Close rate > Open rate * Red candle → Close rate < Open rate

Market Preview

Nifty ends above the 200 period MA

Nifty amid high volatility closed above the important 200 period MA at 25150 level with overall bias still maintained with a cautious approach as of now. BankNifty witnessed a strong recovery in the final hours to close near the 59200 zone in anticipation of positive cues in the upcoming Budget session. The market breadth was overall flat with the advance decline indicating a neutral ratio at close.

Market Forecast

Nifty daily range 25000-25400

Nifty, witnessing a highly volatile session on the expiry day of the F&O segment, making a low near the 24950 zone and thereafter, finding some recovery in the final hours to close above the important 200 period MA at 25175 level. The overall bias and sentiment is maintained with a very cautious approach having the psychological support maintained near the long-term trendline zone at 25000 level and on the upside a decisive breach above the 25500 level is necessary to establish conviction and clarity.

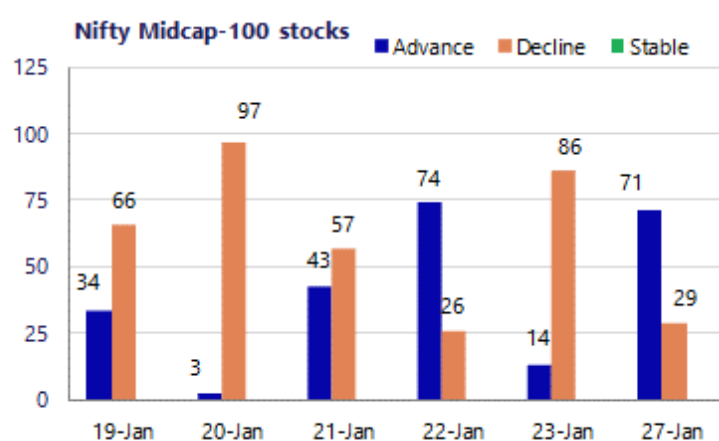
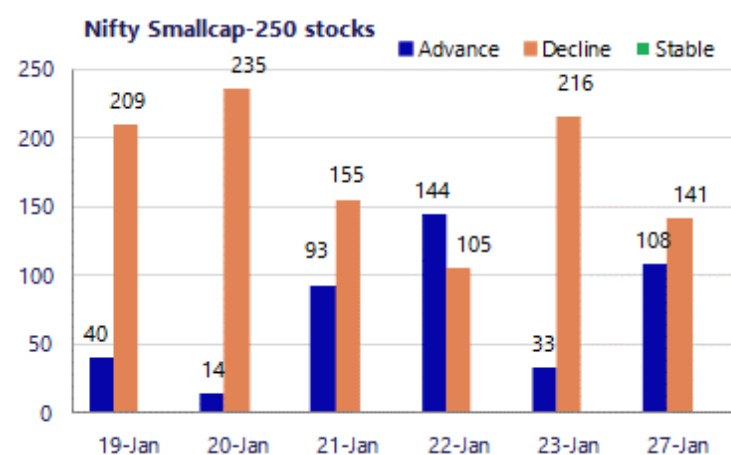
BankNifty amid fluctuations indicated a big green candle with a sharp recovery to move past the important 50EMA at 59000 zone and closed in the green near 59200 level to relieve the sentiment to some extent. The index would have the near-term support at 58300 zone of the trendline zone with major and crucial support near the important 200 period MA at 56600 zone. On the upside, as mentioned earlier, it would need a decisive move past the 100 period MA at 59500 zone to expect for some stability and conviction for the coming days.

The support for the day is seen at 25000 levels, while the resistance is seen at 25400 levels. BankNifty would have the daily range of 58700-59800 levels.

Sensex	Period	Closing	% Chng	Trend	Reversal	2 Sup	1 Sup	Pivot	1 Res	2 Res
Nifty	Daily	25175.40	0.51%	1	25119.30	24804	24990	25118	25304	25432
	Weekly	25048.65	-2.51%	-3	26079.50	24477	24763	25208	25494	25939
	Monthly	26129.60	-0.28%	3	25829.00	25419	25774	26050	26405	26681
Bank Nifty	Daily	59205.45	1.25%	-5	59248.35	57606	58406	58921	59721	60236
	Weekly	58473.10	-2.70%	-3	60835.70	57150	57812	58953	59614	60755
	Monthly	59581.85	-0.29%	3	58708.70	58069	58825	59469	60226	60870
Sensex	Daily	81857.48	0.39%	-14	81796.55	80681	81269	81677	82265	82673
	Weekly	81537.70	-2.43%	-3	84869.30	79689	80613	82054	82978	84419
	Monthly	85220.60	-0.57%	3	84363.05	83208	84214	85159	86166	87111

Gainers - Losers (Nifty 500 Stocks)

Gainers				Losers			
Company Name	Last Price	% Gain	Volume	Company Name	Last Price	% Loss	Volume
Asahi India	991.9	5.20%	168336	CreditAccess Gr	1,320.60	-5.18%	1159961
Adani Enterpris	1,959.50	5.11%	5448988	ElI	308.9	-4.19%	1659708
Axis Bank	1315.8	4.59%	22695390	Brainbees Solu	261.30	-3.85%	1590314
Adani Energy	849.10	4.48%	3674525	CG Power	530.65	-3.36%	10100386
Bharat Dynamics	1,469.40	4.36%	1348668	Emcure Pharmace	1,484.60	-3.02%	195509
Adani Ports	1,363.90	4.24%	3838340	Asian Paints	2622.8	-2.99%	3818433
ACME Solar	207.21	4.15%	1127958	Brigade Ent	737.85	-2.93%	1015495



Nifty Daily chart with RSI indicator



BankNifty Daily chart with RSI indicator



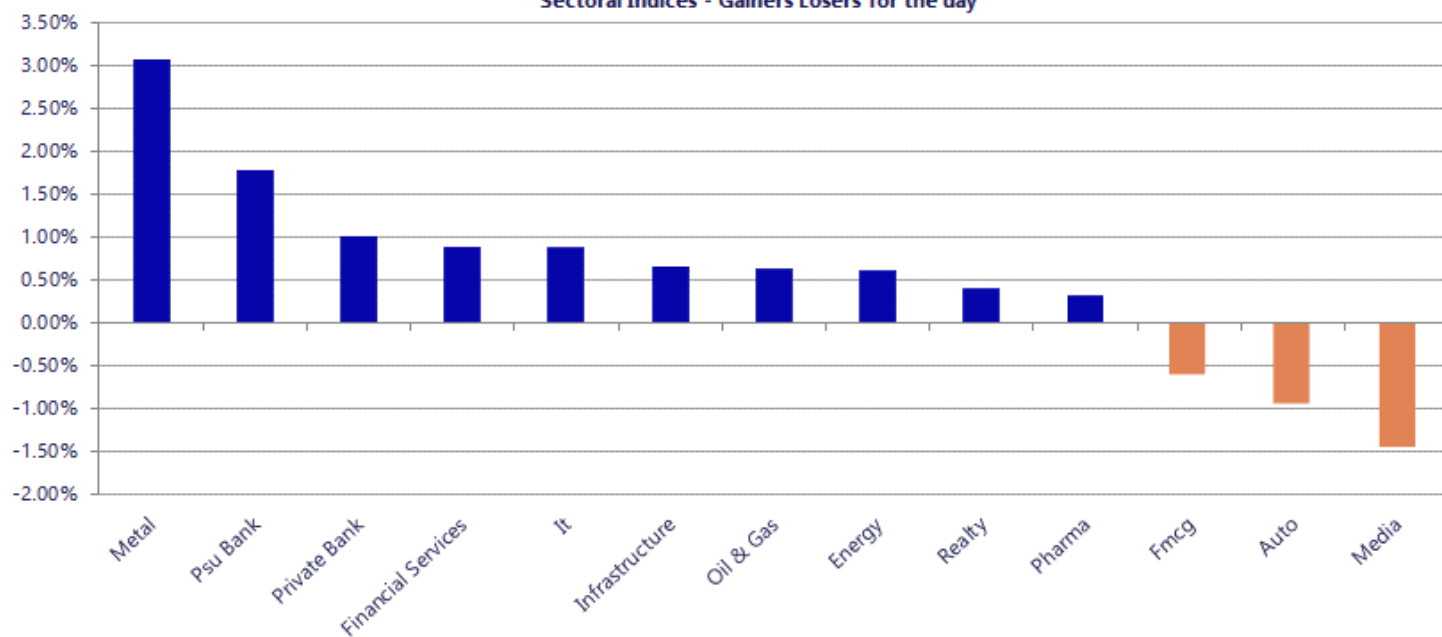
Breakouts - Cross above 200 DMA			
Company Name	LCP	Change %	200 DMA
ANTELOPUS	599.9	10.52	542.8
Dolphin Offshor	427.75	6.36	402.19
Ravindra Energy	152.68	6.05	143.97
Rain Industries	143.65	4.08	138.02
MAS Financial S	314.4	3.59	303.51
Grasim	2856.2	3.34	2763.8
Sona BLW	487.8	3.15	472.92
RACL Geartech	1004.9	2.91	976.45
Home First	1251.7	2.74	1218.28
NTPC	344.7	2.27	337.04
Destiny Logisti	120.2	2.20	117.61
NMDC Steel	41.49	2.17	40.61
Jainam Ferro	240.25	2.06	235.4
Apollo Micro Sy	229.7	1.97	225.26
Sharda Crop	830.25	1.80	815.55
Avanti Feeds	771.45	1.61	759.23
Onward Tech	305.95	1.44	301.6
Nila Spaces	14.73	1.31	14.54

* Stocks crossing above its Simple Moving Average (200DMA)

Breakdown - Cross below 200 DMA			
Company Name	LCP	Change %	200 DMA
Advani Hotels	56.75	-4.28	59.29
Supriya Lifesci	684	-3.83	711.21
EQUIPPP	19.05	-3.79	19.8
Kotak Mahindra	408.7	-2.92	420.98
Godrej Consumer	1173.9	-2.68	1206.24
Latteys Industr	21.82	-2.33	22.34
TBO Tek	1406.8	-2.33	1440.41
DDEVPLASTIK	288.15	-2.14	294.44
Krishana Phosch	469.4	-2.09	479.42
Parag Milk Food	251.9	-1.94	256.89
Aurum Proptech	177.71	-1.88	181.12
Orissa Bengal C	54.29	-1.74	55.25
Namo Ewaste Man	171.25	-1.63	174.09
NLC India	241.25	-1.51	244.94
Sanstar	90.96	-1.31	92.17
Dr Agarwals	445.95	-1.08	450.81
Z-Tech India	572.3	-1.07	578.48
Hindprakash Ind	132.25	-1.00	133.58

* Stocks crossing below its Simple Moving Average (200DMA)

Sectoral Indices - Gainers Losers for the day



Stocks witnessing a volume surge as compared to their 5 day average

Watch out for the stocks that have seen a huge spurt in its share price over the last three days

Volume Shockers - NSE						Price Shockers - NSE				
Company name	LCP	% Chg	Volume	Avg Vol *	% Chg	Company name	LCP	Prv Close	% Chg	Volume
Westlife Food	476.8	-2.94	929485	2727	33985	Lotus Chocolate	937	556	68.53	130852
CL Educate	73.76	1.78	197665	1551	12641	Garnet Intl	68.23	47.25	44.4	42452
IndiGrid Infra	164.78	-0.52	5161872	52145	9799	ANTELOPUS	606.9	434.15	39.79	417149
Rategain Travel	605	-1.94	1672628	18551	8916	Mercury Ev-Tech	41.4	30.08	37.63	1777258
Apis India	71.5	-0.04	433221	10288	4111	Kitex Garments	182.45	140.9	29.49	696100
Max Healthcare	975.65	-1.6	1035823	24814	4074	Bajaj Consumer	317.5	247.55	28.26	374271
Go Fashion	412.3	8.9	136933	3934	3381	Cranex	75.9	61.5	23.41	17612
SBFC Finance	90	-11.42	2708998	97125	2689	GTV Engineering	52.79	43.73	20.72	21379
Gulf Oil Lubric	1055	0.17	45627	1701	2582	NK Industries	77.52	64.95	19.35	9
Tarsons	196.65	-1.11	104959	3956	2553	Antony Waste	594.15	499.45	18.96	373518
Modern Eng	30.3	1.71	41545	1793	2217	Choksi Labs	117.6	99.15	18.61	2976
Ambuja Cements	532.9	2.71	1302200	57016	2184	IRIS RegTech	324	275.75	17.5	3624
Axis Bank	1323	4.99	5982765	272679	2094	Swarnsarita Jew	36.74	31.54	16.49	266860
Sigma Solve	50.1	-3.62	29974	1373	2083	Tai Industries	32.53	28	16.18	5836
Home First	1238	11.29	359637	17021	2013	Forbes Gokak	449.9	387.35	16.15	12288
IFB Industries	1101	-18.58	54986	2670	1959	Jindal Poly Inv	1013	873.9	15.92	2546
Karur Vysya	291.5	9.85	4701249	237590	1879	Thrive Future	131.25	113.4	15.74	40088
Birla Precision	30.76	-20	790848	42644	1755	J J Finance	42.59	36.8	15.73	5540
M&M	3396	-4.14	1122107	64245	1647	Citi Port Fin	40.11	34.66	15.72	426
Laurus Labs	1001.45	-1.54	1449790	85721	1591	Amit Securities	55.94	48.34	15.72	1389
Adani Green Ene	797.8	3.33	1431156	85550	1573	Classic Leasing	43.85	37.9	15.7	50

Nifty 50 stocks - Summary Details											
Symbol	LTP	Chng	% Chng	Volume (lacs)	Turnover (crs.)	52w High	Diff with 52w H	52w Low	Diff with 52w L	30 days % chng	365 days % chng
NIFTY 50	25175.40	126.75	0.51%	6183.94	50966.19	26373.20	4.54%	21743.65	15.78%	-4.31%	8.18%
ADANIENT	1963.00	98.80	5.30%	54.49	1060.53	2616.50	24.98%	1848.00	6.22%	-17.10%	-21.56%
ADANIPTS	1365.00	56.60	4.33%	38.38	519.24	1549.00	11.88%	1010.75	35.05%	-12.40%	18.70%
APOLLOHOSP	6820.00	17.00	0.25%	5.15	349.21	8099.50	15.80%	6001.00	13.65%	-3.82%	-1.30%
ASIANPAINT	2628.00	-75.70	-2.80%	38.19	1003.42	2985.70	11.98%	2124.75	23.69%	-3.71%	19.52%
AXISBANK	1322.00	64.00	5.09%	226.96	2982.08	1333.20	0.84%	933.50	41.62%	2.69%	31.14%
BAJAJ-AUTO	9500.00	86.50	0.92%	3.02	284.65	9888.00	3.92%	7089.35	34.00%	3.46%	11.26%
BAJAJFINSV	1926.00	-23.00	-1.18%	47.00	903.65	2195.00	12.26%	1617.00	19.11%	-4.82%	11.80%
BAJFINANCE	917.95	-9.90	-1.07%	153.11	1404.66	1102.50	16.74%	726.00	26.44%	-8.26%	-87.46%
BEL	417.70	7.00	1.70%	154.54	641.70	436.00	4.20%	240.25	73.86%	2.83%	51.91%
BHARTIARTL	1981.00	-3.70	-0.19%	105.11	2077.70	2174.50	8.90%	1559.50	27.03%	-6.51%	21.63%
CIPLA	1314.00	-1.00	-0.08%	41.10	537.34	1673.00	21.46%	1281.70	2.52%	-12.37%	-8.64%
COALINDIA	421.90	3.50	0.84%	87.49	370.12	442.00	4.55%	349.25	20.80%	4.50%	10.34%
DRREDDY	1238.00	2.40	0.19%	21.58	267.76	1379.70	10.27%	1020.00	21.37%	-3.73%	-4.68%
EICHERMOT	7147.50	174.50	2.50%	4.98	352.48	7613.50	6.12%	4646.00	53.84%	-4.52%	39.19%
ETERNAL	255.00	-3.70	-1.43%	1061.69	2701.58	368.45	30.79%	194.80	30.90%	-9.02%	#VALUE!
GRASIM	2860.00	101.00	3.66%	15.21	430.52	2977.80	3.96%	2301.65	24.26%	-2.50%	15.53%
HCLTECH	1720.20	13.20	0.77%	26.23	449.72	1829.40	5.97%	1302.75	32.04%	1.61%	-6.60%
HDFCBANK	928.00	11.90	1.30%	447.38	4102.95	1020.50	9.06%	813.00	14.15%	-8.08%	-45.01%
HDFCLIFE	725.00	12.90	1.81%	33.44	239.60	820.75	11.67%	595.25	21.80%	-6.79%	15.19%
HINDALCO	964.00	13.70	1.44%	100.05	962.87	985.00	2.13%	546.45	76.41%	10.01%	54.91%
HINDUNILVR	2403.00	-6.50	-0.27%	20.60	494.72	2750.00	12.62%	2136.00	12.50%	4.64%	2.84%
ICICIBANK	1367.10	23.70	1.76%	252.59	3414.62	1500.00	8.86%	1186.00	15.27%	-1.44%	11.91%
INDIGO	4764.00	59.50	1.26%	12.55	593.34	6232.50	23.56%	3988.95	19.43%	-8.77%	17.28%
INFY	1687.40	16.60	0.99%	106.73	1791.97	1924.00	12.30%	1307.00	29.10%	0.15%	-10.00%
ITC	319.80	-3.60	-1.11%	478.13	1530.26	471.50	32.17%	317.85	0.61%	-20.61%	-26.00%
JIOFIN	257.15	4.25	1.68%	147.70	374.39	338.60	24.05%	198.65	29.45%	-15.33%	-3.77%
JSWSTEEL	1223.20	53.20	4.55%	38.07	459.82	1230.40	0.59%	901.10	35.75%	6.67%	27.26%
KOTAKBANK	411.90	-10.90	-2.58%	476.03	1938.18	460.38	10.53%	372.55	10.56%	-80.45%	-77.95%
LT	3804.50	60.70	1.62%	21.61	815.18	4195.00	9.31%	2965.30	28.30%	-7.76%	6.41%
M&M	3392.90	-150.50	-4.25%	71.40	2425.15	3839.90	11.64%	2425.00	39.91%	-2.25%	25.37%
MARUTI	15237.00	-232.00	-1.50%	5.66	858.96	17370.00	12.28%	11059.45	37.77%	-6.73%	28.69%
MAXHEALTH	975.10	-16.30	-1.64%	42.30	412.66	1314.30	25.81%	940.05	3.73%	-7.79%	-7.03%
NESTLEIND	1306.00	12.20	0.94%	11.59	150.94	1332.70	2.00%	1055.00	23.79%	2.97%	-41.40%
NTPC	346.00	9.30	2.76%	122.03	418.31	371.45	6.85%	292.80	18.17%	4.16%	4.44%
ONGC	248.20	2.73	1.11%	158.44	392.21	265.64	6.57%	205.00	21.07%	4.24%	-7.04%
POWERGRID	255.00	0.85	0.33%	173.61	441.19	322.00	20.81%	247.30	3.11%	-4.81%	-14.59%
RELIANCE	1384.00	-2.10	-0.15%	263.01	3634.44	1611.80	14.13%	1114.85	24.14%	-11.75%	8.53%
SBILIFE	2035.00	32.40	1.62%	13.97	283.58	2109.60	3.54%	1372.55	48.26%	-1.10%	37.16%
SBIN	1053.00	23.50	2.28%	144.07	1504.36	1055.50	0.24%	680.00	54.85%	5.93%	36.64%
SHRIRAMFIN	1001.70	-1.85	-0.18%	79.84	797.42	1025.60	2.33%	508.15	97.13%	4.78%	93.49%
SUNPHARMA	1639.00	7.10	0.44%	26.66	436.13	1851.20	11.46%	1548.00	5.88%	-7.06%	-9.29%
TATACONSUM	1189.50	36.00	3.12%	38.44	452.53	1220.90	2.57%	930.10	27.89%	-2.71%	19.24%
TMPV	340.00	-4.45	-1.29%	125.05	425.14	759.70	55.25%	335.90	1.22%	-5.18%	#VALUE!
TATASTEEL	193.10	5.49	2.93%	423.02	807.84	193.14	0.02%	124.74	54.80%	9.78%	45.52%
TCS	3167.00	4.50	0.14%	42.80	1346.76	4191.35	24.44%	2866.60	10.48%	-4.46%	-23.92%
TECHM	1748.00	46.90	2.76%	29.33	506.81	1749.00	0.06%	1209.40	44.53%	4.17%	1.02%
TITAN	4003.00	-18.80	-0.47%	17.60	703.00	4312.10	7.17%	2925.00	36.85%	2.45%	19.82%
TRENT	3815.90	60.00	1.60%	9.97	375.54	6270.40	39.14%	3693.10	3.33%	-10.35%	-33.24%
ULTRACEMCO	12590.00	221.00	1.79%	9.26	1172.61	13097.00	3.87%	10047.85	25.30%	5.92%	15.67%
WIPRO	235.40	3.00	1.29%	156.76	366.33	324.60	27.48%	228.00	3.25%	-12.16%	-22.87%

Disclaimer / Disclosures

ANALYST CERTIFICATION

I, Mrs. Vaishali Parekh B.com, Research Analyst, author and the name subscribed to this report, hereby certify that all of the views expressed in this research report accurately reflect our views about the subject issuer(s) or securities. We also certify that no part of our compensation was, is, or will be directly or indirectly related to the specific recommendation(s) or view(s) in this report.

Terms & conditions and other disclosures:

Prabhudas Lilladher Pvt. Ltd, Mumbai, India (hereinafter referred to as "PL") is engaged in the business of Stock Broking, Portfolio Manager, Depository Participant and distribution for third party financial products. PL is a subsidiary of Prabhudas Lilladher Advisory Services Pvt Ltd. which has its various subsidiaries engaged in business of commodity broking, investment banking, financial services (margin funding) and distribution of third party financial/other products, details in respect of which are available at www.plindia.com

This document has been prepared by the Research Division of PL and is meant for use by the recipient only as information and is not for circulation. This document is not to be reported or copied or made available to others without prior permission of PL. It should not be considered or taken as an offer to sell or a solicitation to buy or sell any security.

The information contained in this report has been obtained from sources that are considered to be reliable. However, PL has not independently verified the accuracy or completeness of the same. Neither PL nor any of its affiliates, its directors or its employees accepts any responsibility of whatsoever nature for the information, statements and opinion given, made available or expressed herein or for any omission therein.

Recipients of this report should be aware that past performance is not necessarily a guide to future performance and value of investments can go down as well. The suitability or otherwise of any investments will depend upon the recipient's particular circumstances and, in case of doubt, advice should be sought from an independent expert/advisor.

Either PL or its affiliates or its directors or its employees or its representatives or its clients or their relatives may have position(s), make market, act as principal or engage in transactions of securities of companies referred to in this report and they may have used the research material prior to publication.

PL may from time to time solicit or perform investment banking or other services for any company mentioned in this document.

PL is registered as Research Analyst under Securities and Exchange Board of India (Research Analysts) Regulations, 2014 PL submits that no material disciplinary action has been taken on us by any Regulatory Authority impacting Equity Research Analysis activities.

PL or its research analysts or its associates or his relatives do not have any financial interest in the subject company.

PL or its research analysts or its associates or his relatives do not have actual/beneficial ownership of one per cent or more securities of the subject company at the end of the month immediately preceding the date of publication of the research report.

PL or its research analysts or its associates or his relatives do not have any material conflict of interest at the time of publication of the research report.

PL or its associates might have received compensation from the subject company in the past twelve months.

PL or its associates might have managed or co-managed public offering of securities for the subject company in the past twelve months or mandated by the subject company for any other assignment in the past twelve months.

PL or its associates might have received any compensation for investment banking or merchant banking or brokerage services from the subject company in the past twelve months.

PL or its associates might have received any compensation for products or services other than investment banking or merchant banking or brokerage services from the subject company in the past twelve months PL or its associates might have received any compensation or other benefits from the subject company or third party in connection with the research report.

PL encourages independence in research report preparation and strives to minimize conflict in preparation of research report. PL or its analysts did not receive any compensation or other benefits from the subject Company or third party in connection with the preparation of the research report. PL or its Research Analysts do not have any material conflict of interest at the time of publication of this report.

It is confirmed that Mrs. Vaishali Parekh B.com, Research Analyst of this report has not received any compensation from the companies mentioned in the report in the preceding twelve months compensation of our Research Analysts is not based on any specific merchant banking, investment banking or brokerage service transactions.

The Research analysts for this report certifies that all of the views expressed in this report accurately reflect his or her personal views about the subject company or companies and its or their securities, and no part of his or her compensation was, is or will be, directly or indirectly related to specific recommendations or views expressed in this report.

The research analysts for this report has not served as an officer, director or employee of the subject company PL or its research analysts have not engaged in market making activity for the subject company

Our sales people, traders, and other professionals or affiliates may provide oral or written market commentary or trading strategies to our clients that reflect opinions that are contrary to the opinions expressed herein, and our proprietary trading and investing businesses may make investment decisions that are inconsistent with the recommendations expressed herein. In reviewing these materials, you should be aware that any or all of the foregoing, among other things, may give rise to real or potential conflicts of interest.

PL and its associates, their directors and employees may (a) from time to time, have a long or short position in, and buy or sell the securities of the subject company or (b) be engaged in any other transaction involving such securities and earn brokerage or other compensation or act as a market maker in the financial instruments of the subject company or act as an advisor or lender/borrower to the subject company or may have any other potential conflict of interests with respect to any recommendation and other related information and opinions.

Regd. Office: 3rd Floor, Sadhana House, 570, P. B. Marg, Behind Mahindra Tower, Worli, Mumbai - 400 018, India.