

Date: 29th January 2026

* Sensex 82344.68 + 487.20

* Nifty 25342.75 + 167.35

* Bank Nifty 59598.80 + 393.35

Market Preview

Nifty ends on an optimistic note

Nifty indicated a decent revival with strong participation from the broader markets witnessed to improve the sentiment ahead of the upcoming budget session. BankNifty indicated a positive close near the 59600 zone with most of the PSU Banks gaining strength supporting the benchmark index to propel. The market breadth was strong with the advance decline indicating a ratio of 7:2 at close.

Market Forecast

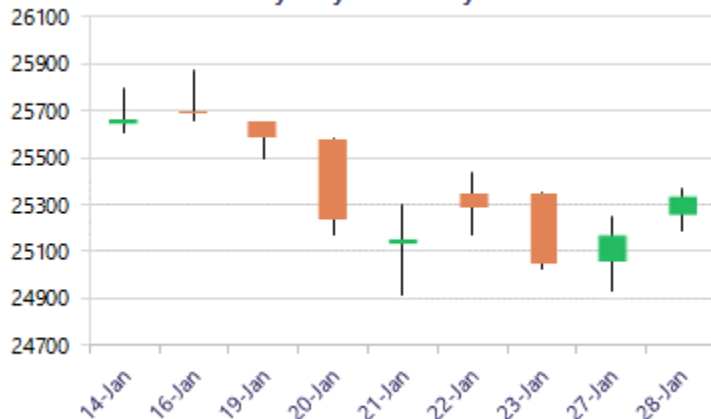
Nifty daily range 25200-25500

Nifty, continued with the positive move further ahead with strong buying interest witnessed among the broader markets to pull the index to close near the 25350 zone with bias and sentiment improving ahead of the upcoming budget session. The index sustaining above the important 200 period MA at 25170 level has further near-term target of 25700 level of the 50EMA zone while the long-term trendline zone at 25000 level would be the important and crucial support zone which needs to be sustained as of now.

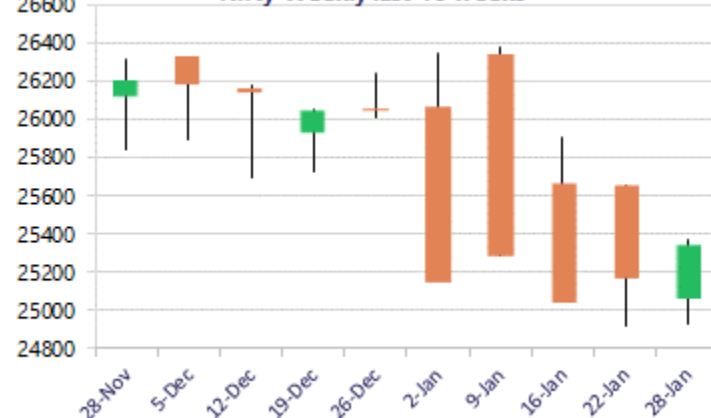
BankNifty opening in the green witnessed a rangebound session to end near the 59600 zone with PSU banks witnessed improvement the bias and gaining with active participation visible. The index would have the near-term support at 58800 zone of the rising channel base, with major and crucial support near the important 200 period MA at 56700 zone as mentioned earlier. On the upside, the 60300 zone would be the resistance barrier which needs to be breached to trigger for fresh upward move in the coming days.

The support for the day is seen at 25200 levels, while the resistance is seen at 25500 levels. BankNifty would have the daily range of 59200-60000 levels.

Nifty daily last 10 days



Nifty Weekly last 10 weeks

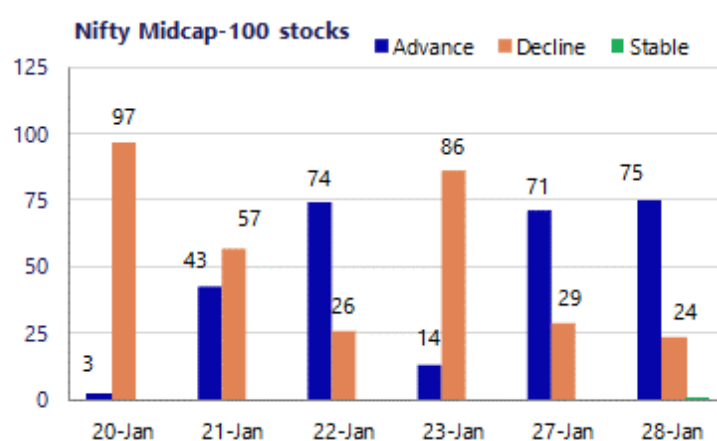
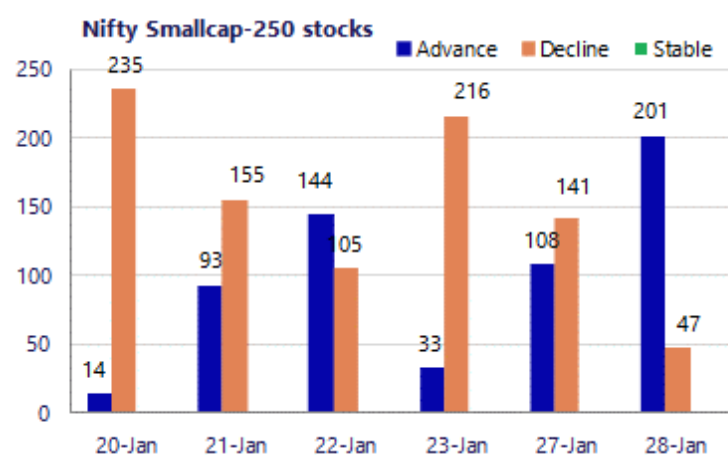


*Blue candle → Close rate > Open rate * Red candle → Close rate < Open rate

Sensex	Period	Closing	% Chng	Trend	Reversal	2 Sup	1 Sup	Pivot	1 Res	2 Res
Nifty	Daily	25342.75	0.66%	2	24976.45	25116	25230	25301	25414	25485
	Weekly	25048.65	-2.51%	-3	26079.50	24477	24763	25208	25494	25939
	Monthly	26129.60	-0.28%	3	25829.00	25419	25774	26050	26405	26681
Bank Nifty	Daily	59598.80	0.66%	1	59128.70	59053	59326	59513	59786	59973
	Weekly	58473.10	-2.70%	-3	60835.70	57150	57812	58953	59614	60755
	Monthly	59581.85	-0.29%	3	58708.70	58069	58825	59469	60226	60870
Sensex	Daily	82344.68	0.60%	1	81300.50	81532	81938	82221	82628	82910
	Weekly	81537.70	-2.43%	-3	84869.30	79689	80613	82054	82978	84419
	Monthly	85220.60	-0.57%	3	84363.05	83208	84214	85159	86166	87111

Gainers - Losers (Nifty 500 Stocks)

Gainers				Losers			
Company Name	Last Price	% Gain	Volume	Company Name	Last Price	% Loss	Volume
BEML	1819.1	10.07%	803440	Asian Paints	2,511.80	-4.23%	3429570
Data Patterns	2,610.60	13.63%	2955403	Berger Paints	478.85	-3.32%	326948
CG Power	581.95	9.67%	12171070	Authum Invest	502.10	-3.13%	893797
Bharat Elec	453.00	8.91%	71885372	Bharti Hexacom	1,535.20	-2.96%	351124
ABB India	5,043.50	7.14%	419214	CCL Products	932.85	-2.70%	107879
Bharat Dynamics	1,570.00	6.85%	2536392	Britannia	5748.5	-2.34%	442499
Cochin Shipyard	1,622.90	6.55%	1844295	Asahi India	970.3	-2.18%	63190



Nifty Daily chart with RSI indicator



BankNifty Daily chart with RSI indicator



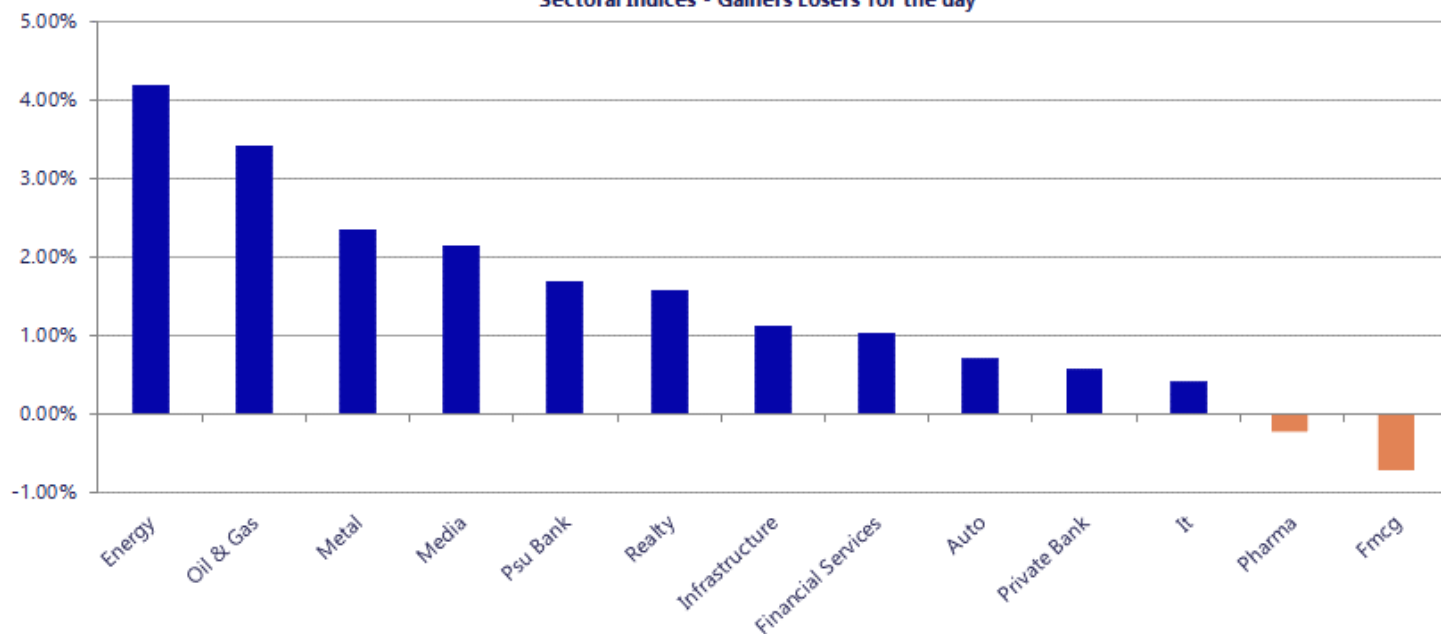
Breakouts - Cross above 200 DMA			
Company Name	LCP	Change %	200 DMA
Mirza Intl	39.18	12.94	34.69
Omax Autos	116.59	7.59	108.37
Umiya Buildcon	86.62	7.31	80.72
Zuari Agro Chem	282.35	6.77	264.45
Pearl Global In	1477	6.16	1391.34
Syrma SGS	722.9	4.82	689.69
MMTC	67.71	4.81	64.6
Gujarat Pipavav	168.92	4.30	161.96
BHEL	259.65	3.83	250.07
MOIL	366	3.54	353.5
Freshara Agro	178.7	3.52	172.62
Nippon	834.8	3.35	807.74
Prataap Snacks	1107.9	3.28	1072.75
Tilaknagar Ind	433.6	3.27	419.85
Uniparts India	426.25	3.01	413.81
Tera Software	374.1	3.00	363.21
Vaswani Ind	54.18	3.00	52.6
Barak Vally Cem	44.39	2.92	43.13

* Stocks crossing above its Simple Moving Average (200DMA)

Breakdown - Cross below 200 DMA			
Company Name	LCP	Change %	200 DMA
Radico Khaitan	2746.8	-4.06	2862.96
Brace Port Logi	80	-3.37	82.79
Home First	1190.9	-2.35	1219.5
Dynamic Service	135.15	-2.20	138.19
Greenlam Ind	241.15	-1.01	243.6
Bafna Pharma	113.88	-0.54	114.5
Britannia	5748.5	-0.38	5770.26
Asian Paints	2511.8	-0.26	2518.3
Jainam Ferro	235.55	-0.11	235.8
Inventurus Know	1586.2	-0.10	1587.81
Bharti Airtel	1957.7	-0.02	1958.15

* Stocks crossing below its Simple Moving Average (200DMA)

Sectoral Indices - Gainers Losers for the day



Stocks witnessing a volume surge as compared to their 5 day average

Watch out for the stocks that have seen a huge spurt in its share price over the last three days

Volume Shockers - NSE					
Company name	LCP	% Chg	Volume	Avg Vol *	% Chg
Mahindra Logist	339	15.33	872054	4175	20788
Triveni Engg	358.5	2.84	1961006	12244	15916
JB Chemicals	1851.1	-1.61	213624	3411	6164
CSB Bank	431	-13.74	683267	13434	4986
Rajasthan Secu	35	0.49	217739	4709	4524
IB Infotech Ent	404.75	4.99	49702	1098	4428
Mirza Intl	39.1	13.6	596480	13812	4219
Omax Autos	116.85	19.97	85645	2109	3961
Dhruva Capital	135	4.65	47024	1254	3651
eClerx Services	4443.4	0.87	211934	6504	3159
Metro Brands	1037.9	-2.1	197621	6515	2933
Krishna Institu	609.7	-0.79	111989	4103	2629
Tube Investment	2297.4	4.85	76406	3488	2091
Tejas Networks	338.9	14.32	3333693	158112	2008
Oil India	491.6	9.59	2187512	103989	2004
Fiberweb India	35.43	7.66	26879	1358	1879
Bajaj Finserv	1935.2	1.02	2124176	118185	1697
Lupin	2132.65	-0.7	186384	10577	1662
ONGC	268	8.04	6814486	446937	1425
Liberty Shoes	260.8	11.88	17287	1166	1382
Sterlite Techno	103.6	19.98	1255545	86821	1346

Price Shockers - NSE				
Company name	LCP	Prv Close	% Chg	Volume
Colinz Labs	66.6	46.25	44	36244
Garnet Intl	74.9	56.86	31.73	59013
B2B Software	33.25	25.76	29.08	45681
Omax Autos	116.85	91.95	27.08	85645
Meera Industrie	86.22	69.27	24.47	164606
Gokak Textiles	66.61	54.42	22.4	7468
GRAMEVA	63.77	52.71	20.98	7486
Mirza Intl	39.1	32.5	20.31	596480
Jumbo Bag	65.05	54.3	19.8	10149
Hind Copper	637.5	535.55	19.04	12680346
Rajkot Invest	51	42.96	18.72	3465
Ovobel Foods	173.8	146.45	18.68	20027
Sterlite Techno	103.6	87.9	17.86	1255545
Manorama Indust	1283.05	1095.4	17.13	12820
Guj Poly AVX	63.75	54.43	17.12	19151
Mahindra Logist	339	289.8	16.98	872054
Precision Wires	251	215	16.74	113170
TIL	255	218.8	16.54	3114
Apex Frozen	306.95	263.5	16.49	119109
Shilchar Techno	3444	2961.55	16.29	23724
NGL Fine Chem	1753	1510	16.09	345

Nifty 50 stocks - Summary Details											
Symbol	LTP	Chng	% Chng	Volume (lacs)	Turnover (crs.)	52w High	Diff with 52w H	52w Low	Diff with 52w L	30 days % chng	365 days % chng
NIFTY 50	25342.75	167.35	0.66%	5748.80	42362.82	26373.20	3.91%	21743.65	16.55%	-3.33%	9.02%
ADANIENT	1995.00	35.50	1.81%	20.73	411.17	2616.50	23.75%	1848.00	7.95%	-12.13%	-15.36%
ADANIPTS	1379.60	15.70	1.15%	29.38	404.62	1549.00	10.94%	1010.75	36.49%	-8.28%	24.65%
APOLLOHOSP	6872.50	79.00	1.16%	3.99	273.92	8099.50	15.15%	6001.00	14.52%	-5.07%	0.72%
ASIANPAINT	2512.00	-110.80	-4.22%	34.30	855.28	2985.70	15.87%	2124.75	18.23%	-4.50%	15.93%
AXISBANK	1314.00	-1.80	-0.14%	154.26	2067.89	1369.40	4.05%	933.50	40.76%	7.13%	38.72%
BAJAJ-AUTO	9469.00	-23.00	-0.24%	3.42	320.08	9888.00	4.24%	7089.35	33.57%	4.72%	12.98%
BAJAJFINSV	1942.00	24.30	1.27%	16.06	310.28	2195.00	11.53%	1617.00	20.10%	-4.95%	10.93%
BAJFINANCE	936.00	21.30	2.33%	60.46	561.63	1102.50	15.10%	726.00	28.93%	-8.53%	-87.70%
BEL	454.25	38.30	9.21%	719.78	3188.17	457.50	0.71%	240.25	89.07%	4.39%	53.97%
BHARTIARTL	1956.00	-17.40	-0.88%	94.27	1845.23	2174.50	10.05%	1559.50	25.42%	-6.27%	19.98%
CIPLA	1334.70	21.70	1.65%	15.36	202.87	1673.00	20.22%	1281.70	4.14%	-12.82%	-6.97%
COALINDIA	445.20	22.30	5.27%	174.96	767.52	445.95	0.17%	349.25	27.47%	5.16%	10.40%
DRREDDY	1221.00	-18.80	-1.52%	17.41	213.32	1379.70	11.50%	1020.00	19.71%	-2.32%	1.26%
EICHERMOT	7095.00	-69.50	-0.97%	8.56	596.53	7613.50	6.81%	4646.00	52.71%	-2.18%	37.61%
ETERNAL	266.70	12.85	5.06%	825.28	2154.81	368.45	27.62%	194.80	36.91%	-9.90%	#VALUE!
GRASIM	2840.00	-16.20	-0.57%	5.09	145.28	2977.80	4.63%	2301.65	23.39%	1.37%	14.67%
HCLTECH	1722.80	2.60	0.15%	27.14	466.47	1779.75	3.20%	1302.75	32.24%	3.57%	-4.05%
HDFCBANK	932.40	6.00	0.65%	353.47	3304.72	1020.50	8.63%	813.00	14.69%	-6.62%	-43.85%
HDFCLIFE	728.90	8.85	1.23%	17.79	129.00	820.75	11.19%	595.25	22.45%	-3.79%	15.93%
HINDALCO	1003.00	41.15	4.28%	126.16	1253.70	1007.90	0.49%	546.45	83.55%	10.19%	58.49%
HINDUNILVR	2386.00	-14.90	-0.62%	17.98	426.26	2750.00	13.24%	2136.00	11.70%	5.05%	1.39%
ICICIBANK	1368.30	6.90	0.51%	132.43	1813.90	1500.00	8.78%	1193.10	14.68%	0.81%	12.59%
INDIGO	4757.00	-12.00	-0.25%	10.76	511.65	6232.50	23.67%	4056.40	17.27%	-6.01%	14.59%
INFY	1666.00	-16.70	-0.99%	85.89	1428.12	1924.00	13.41%	1307.00	27.47%	1.61%	-10.28%
ITC	321.40	2.75	0.86%	284.00	911.90	471.50	31.83%	317.85	1.12%	-21.16%	-27.84%
JIOFIN	255.95	-0.10	-0.04%	190.34	485.81	338.60	24.41%	198.65	28.84%	-13.77%	4.75%
JSWSTEEL	1218.40	-3.60	-0.29%	22.14	270.24	1232.00	1.10%	901.10	35.21%	11.66%	31.05%
KOTAKBANK	411.40	2.70	0.66%	148.24	608.91	460.38	10.64%	372.55	10.43%	-81.12%	-78.33%
LT	3796.90	9.10	0.24%	21.11	801.83	4195.00	9.49%	2965.30	28.04%	-6.41%	9.53%
M&M	3450.30	56.80	1.67%	39.65	1356.89	3839.90	10.15%	2425.00	42.28%	-6.34%	21.14%
MARUTI	14880.00	-365.00	-2.39%	15.84	2366.28	17370.00	14.34%	11059.45	34.55%	-8.14%	27.38%
MAXHEALTH	960.00	-15.50	-1.59%	42.38	407.53	1314.30	26.96%	940.05	2.12%	-9.20%	-7.60%
NESTLEIND	1295.60	-7.70	-0.59%	9.40	121.10	1332.70	2.78%	1055.00	22.81%	2.41%	-40.97%
NTPC	348.90	4.20	1.22%	135.67	473.21	371.45	6.07%	292.80	19.16%	6.36%	6.50%
ONGC	268.23	20.28	8.18%	734.25	1939.89	269.65	0.53%	205.00	30.84%	5.72%	-3.34%
POWERGRID	259.60	5.25	2.06%	160.46	414.70	322.00	19.38%	247.30	4.97%	-4.18%	-14.03%
RELIANCE	1398.50	18.00	1.30%	111.21	1553.48	1611.80	13.23%	1114.85	25.44%	-11.46%	10.77%
SBILIFE	2053.00	14.80	0.73%	13.91	286.01	2109.60	2.68%	1372.55	49.58%	0.95%	41.50%
SBIN	1062.65	9.50	0.90%	121.70	1287.57	1065.60	0.28%	680.00	56.27%	8.99%	41.52%
SHRIRAMFIN	1017.00	15.95	1.59%	55.87	565.25	1025.60	0.84%	508.15	100.14%	4.25%	89.79%
SUNPHARMA	1608.00	-30.90	-1.89%	41.24	663.34	1851.20	13.14%	1548.00	3.88%	-4.69%	-10.06%
TATACONSUM	1133.40	-54.00	-4.55%	45.60	515.32	1220.90	7.17%	930.10	21.86%	1.00%	19.66%
TMPV	341.10	0.55	0.16%	94.25	321.14	755.00	54.82%	335.90	1.55%	-5.09%	#VALUE!
TATASTEEL	193.85	1.57	0.82%	333.09	645.49	195.20	0.69%	124.74	55.40%	13.69%	48.20%
TCS	3199.00	41.00	1.30%	27.51	877.96	4156.35	23.03%	2866.60	11.60%	-3.72%	-23.95%
TECHM	1760.00	14.90	0.85%	25.35	444.62	1765.70	0.32%	1209.40	45.53%	8.24%	1.28%
TITAN	3980.00	-17.00	-0.43%	8.09	322.24	4312.10	7.70%	2925.00	36.07%	0.13%	17.48%
TRENT	3862.50	67.40	1.78%	6.47	248.30	6270.40	38.40%	3693.10	4.59%	-11.44%	-30.88%
ULTRACEMCO	12775.00	186.00	1.48%	4.57	580.97	13097.00	2.46%	10047.85	27.14%	6.74%	11.55%
WIPRO	237.95	3.15	1.34%	101.55	240.44	323.60	26.47%	228.00	4.36%	-11.83%	-26.65%

Disclaimer / Disclosures

ANALYST CERTIFICATION

I, Mrs. Vaishali Parekh B.com, Research Analyst, author and the name subscribed to this report, hereby certify that all of the views expressed in this research report accurately reflect our views about the subject issuer(s) or securities. We also certify that no part of our compensation was, is, or will be directly or indirectly related to the specific recommendation(s) or view(s) in this report.

Terms & conditions and other disclosures:

Prabhudas Lilladher Pvt. Ltd, Mumbai, India (hereinafter referred to as "PL") is engaged in the business of Stock Broking, Portfolio Manager, Depository Participant and distribution for third party financial products. PL is a subsidiary of Prabhudas Lilladher Advisory Services Pvt Ltd. which has its various subsidiaries engaged in business of commodity broking, investment banking, financial services (margin funding) and distribution of third party financial/other products, details in respect of which are available at www.plindia.com

This document has been prepared by the Research Division of PL and is meant for use by the recipient only as information and is not for circulation. This document is not to be reported or copied or made available to others without prior permission of PL. It should not be considered or taken as an offer to sell or a solicitation to buy or sell any security.

The information contained in this report has been obtained from sources that are considered to be reliable. However, PL has not independently verified the accuracy or completeness of the same. Neither PL nor any of its affiliates, its directors or its employees accepts any responsibility of whatsoever nature for the information, statements and opinion given, made available or expressed herein or for any omission therein.

Recipients of this report should be aware that past performance is not necessarily a guide to future performance and value of investments can go down as well. The suitability or otherwise of any investments will depend upon the recipient's particular circumstances and, in case of doubt, advice should be sought from an independent expert/advisor.

Either PL or its affiliates or its directors or its employees or its representatives or its clients or their relatives may have position(s), make market, act as principal or engage in transactions of securities of companies referred to in this report and they may have used the research material prior to publication.

PL may from time to time solicit or perform investment banking or other services for any company mentioned in this document.

PL is registered as Research Analyst under Securities and Exchange Board of India (Research Analysts) Regulations, 2014 PL submits that no material disciplinary action has been taken on us by any Regulatory Authority impacting Equity Research Analysis activities.

PL or its research analysts or its associates or his relatives do not have any financial interest in the subject company.

PL or its research analysts or its associates or his relatives do not have actual/beneficial ownership of one per cent or more securities of the subject company at the end of the month immediately preceding the date of publication of the research report.

PL or its research analysts or its associates or his relatives do not have any material conflict of interest at the time of publication of the research report.

PL or its associates might have received compensation from the subject company in the past twelve months.

PL or its associates might have managed or co-managed public offering of securities for the subject company in the past twelve months or mandated by the subject company for any other assignment in the past twelve months.

PL or its associates might have received any compensation for investment banking or merchant banking or brokerage services from the subject company in the past twelve months.

PL or its associates might have received any compensation for products or services other than investment banking or merchant banking or brokerage services from the subject company in the past twelve months PL or its associates might have received any compensation or other benefits from the subject company or third party in connection with the research report.

PL encourages independence in research report preparation and strives to minimize conflict in preparation of research report. PL or its analysts did not receive any compensation or other benefits from the subject Company or third party in connection with the preparation of the research report. PL or its Research Analysts do not have any material conflict of interest at the time of publication of this report.

It is confirmed that Mrs. Vaishali Parekh B.com, Research Analyst of this report has not received any compensation from the companies mentioned in the report in the preceding twelve months compensation of our Research Analysts is not based on any specific merchant banking, investment banking or brokerage service transactions.

The Research analysts for this report certifies that all of the views expressed in this report accurately reflect his or her personal views about the subject company or companies and its or their securities, and no part of his or her compensation was, is or will be, directly or indirectly related to specific recommendations or views expressed in this report.

The research analysts for this report has not served as an officer, director or employee of the subject company PL or its research analysts have not engaged in market making activity for the subject company

Our sales people, traders, and other professionals or affiliates may provide oral or written market commentary or trading strategies to our clients that reflect opinions that are contrary to the opinions expressed herein, and our proprietary trading and investing businesses may make investment decisions that are inconsistent with the recommendations expressed herein. In reviewing these materials, you should be aware that any or all of the foregoing, among other things, may give rise to real or potential conflicts of interest.

PL and its associates, their directors and employees may (a) from time to time, have a long or short position in, and buy or sell the securities of the subject company or (b) be engaged in any other transaction involving such securities and earn brokerage or other compensation or act as a market maker in the financial instruments of the subject company or act as an advisor or lender/borrower to the subject company or may have any other potential conflict of interests with respect to any recommendation and other related information and opinions.

Regd. Office: 3rd Floor, Sadhana House, 570, P. B. Marg, Behind Mahindra Tower, Worli, Mumbai - 400 018, India.