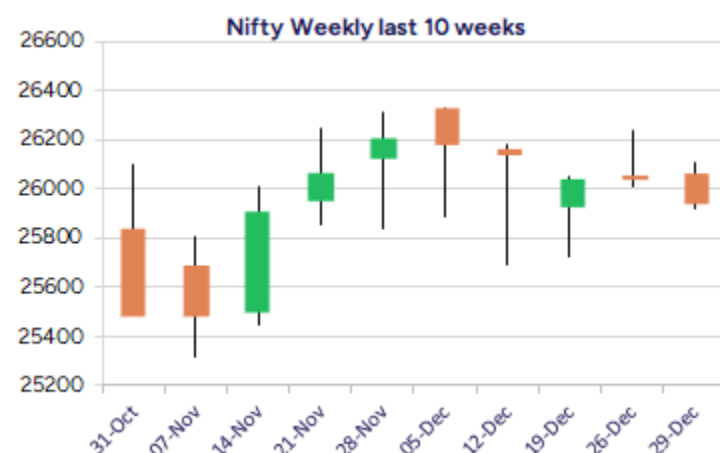
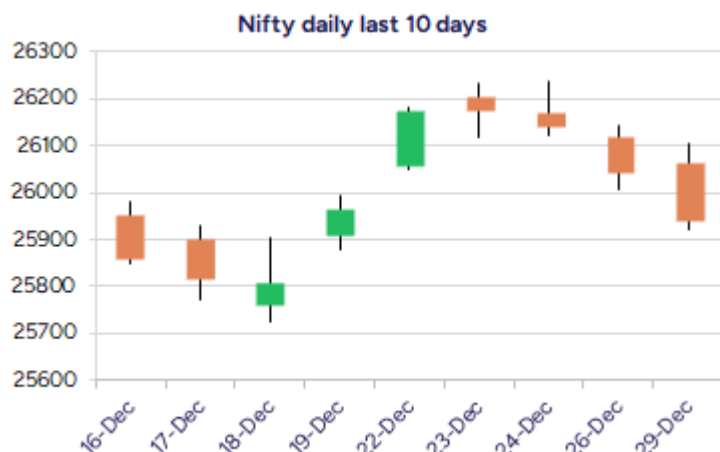


Date: 30<sup>th</sup> December 2025

\* Sensex 84695.54 -345.91

\* Nifty 25942.10 -100.20

\* Bank Nifty 58932.35 -79.00



\*Blue candle → Close rate > Open rate \* Red candle → Close rate < Open rate

## Market Preview

### Nifty closes below 26000 zone

Nifty continue with the slide with profit booking witnessed to end in the red below 26000 zone with 3 losing sessions in a streak with bias slightly weakened. BankNifty continuing with the sluggish session end in the red with gradual slide visible and ending below the 59000 level. The market breadth was weak with the advance decline indicating a ratio of almost 1:3 at close.

## Market Forecast

### Nifty daily range 25800-26200

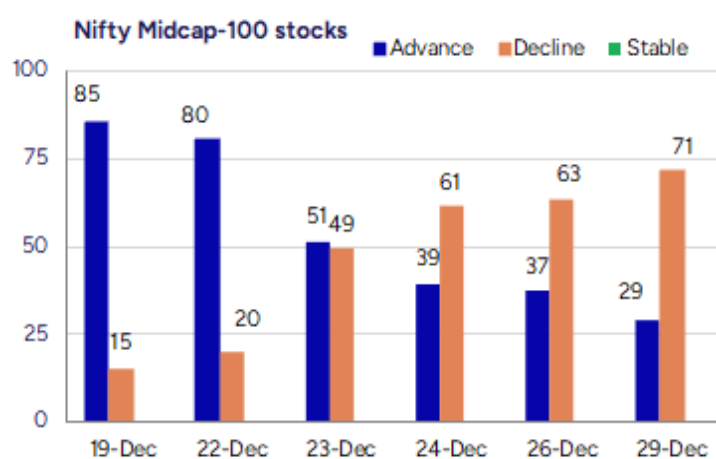
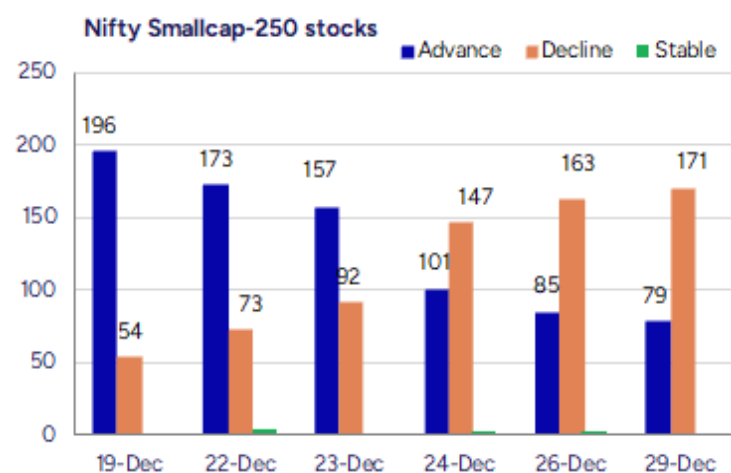
Nifty, continue to slip down extending the losses for the 3rd consecutive session moving below the 26000 zone with bias slightly weakening along the broader markets also subjected to profit booking and witnessing some slide. The index would have the important and crucial support positioned near the 50EMA level at 25850 zone, as mentioned earlier and with the calendar year coming to an end, the activity has slowed down and, on the upside, the index needs to clear the near-term hurdle at 26250 level to trigger for fresh upward.

BankNifty once again witnessed a lack lustre session with sluggish movement visible and low participation among the banking stocks, overall to continue with the consolidation period which has been going on for quite some time having the support maintained strong near the 58700 zone as mentioned earlier. On the upside, the index would desperately need a decisive breach above the 59800 level to trigger for a fresh upward move in the coming days. The support for the day is seen at 25800 levels, while the resistance is seen at 26200 levels. BankNifty would have the daily range of 58600-59400 levels.

Sensex	Period	Closing	% Chng	Trend	Reversal	2 Sup	1 Sup	Pivot	1 Res	2 Res
Nifty	Daily	25942.10	-0.38%	-1	26065.60	25803	25873	25990	26059	26176
	Weekly	26042.30	0.29%	-3	26141.10	25869	25956	26095	26182	26322
	Monthly	26202.95	1.87%	2	25767.20	24953	25578	25944	26569	26935
Bank Nifty	Daily	58932.35	-0.13%	-2	59121.60	58630	58781	58961	59112	59292
	Weekly	59011.35	-0.10%	-2	59690.75	58615	58813	59145	59343	59675
	Monthly	59752.70	3.42%	2	58620.10	56200	57976	58935	60712	61671
Sensex	Daily	84695.54	-0.41%	-2	85153.75	84249	84472	84861	85084	85473
	Weekly	85041.45	0.13%	-2	85480.10	84443	84742	85237	85537	86032
	Monthly	85706.67	2.11%	2	84235.40	81429	83568	84811	86950	88193

**Gainers - Losers ( Nifty 500 Stocks )**

Gainers				Losers			
Company Name	Last Price	% Gain	Volume	Company Name	Last Price	% Loss	Volume
MMTC	70.67	10.01%	69.74	KNR Construct	167.11	-6.61%	169.14
HEG	600.25	7.23%	592.46	IRFC	126.35	-5.45%	130.14
HFCL	64.85	5.50%	65.35	Rail Vikas	367.60	-5.25%	379.14
Shipping Corp	233.92	4.01%	233.06	Craftsman	7,031.50	-4.72%	7165.6
Motherson SWI	46.82	3.74%	45.87	Inventurus Know	1,661.70	-3.99%	1681.5
Emami	532.20	3.40%	525.75	Dixon Technolog	11857	-3.82%	12087.68
Graphite India	601.75	3.25%	606.63	Kirloskar Oil	1222.4	-3.73%	1226.75



## Nifty Daily chart with RSI indicator



## BankNifty Daily chart with RSI indicator



Breakouts - Cross above 200 DMA				Breakdown - Cross below 200 DMA			
Company Name	LCP	Change %	200 DMA	Company Name	LCP	Change %	200 DMA
Orient Bell	312.55	11.00	281.57	Solex Energy	1242	-3.59	1288.31
Vishnusurya Pro	181.85	5.03	173.14	Arabian Petrole	73	-3.23	75.44
Ambey Labs	44.35	4.85	42.3	TSF Investments	452.6	-3.17	467.4
Krishna Defence	830.2	4.45	794.84	SAR Televenture	216.6	-2.46	222.06
Coffee Day	37.55	4.28	36.01	Indef Manufactu	336.15	-2.40	344.42
Brand Concepts	346.8	4.02	333.41	India Tourism D	575.9	-2.26	589.2
Indo Farm Equip	202.1	3.08	196.07	QMS Medical	89.65	-1.80	91.29
Modison	155.91	2.89	151.53	Apcotex Ind	366.5	-1.77	373.1
IBL Finance	62.8	2.88	61.04	Gujarat Apollo	403.05	-1.76	410.25
Ugro Capital	180.09	2.80	175.19	Durlax Top Surf	42	-1.66	42.71
Signet Ind	57.1	2.44	55.74	JK Paper	358.3	-1.57	364.01
HUDCO	226.75	1.98	222.35	Dishman Carboge	245.34	-1.56	249.23
MSTC	520.25	1.78	511.17	Jupiter Wagons	337.7	-1.53	342.93
Responsive Ind	204.74	1.65	201.42	Hemisphere	136.8	-1.49	138.87
20 Microns	220.68	1.26	217.93	Veedol Corp	1628.5	-1.48	1653
Sunflag Iron	267.3	0.43	266.16	Capri Global	176.18	-1.37	178.62
Cords Cable Ind	184.72	0.39	184	California Soft	14.48	-1.30	14.67
Rajputana Bio	244.75	0.32	243.97	RBZ Jewellers	139.22	-1.28	141.03

\* Stocks crossing above its Simple Moving Average (200DMA)

\* Stocks crossing below its Simple Moving Average (200DMA)

Sectoral Indices - Gainers Losers for the day



Stocks witnessing a volume surge as compared to their 5 day average volur

Watch out for the stocks that have seen a huge spurt in its share price over the last three days

Volume Shockers - NSE					
Company name	LCP	% Chg	Volume	Avg Vol *	% Chg
Entero Health	960	0.8	2387709	3212	74246
Nazara	253.05	6.68	6456390	19281	33385
Responsive Ind	207	4.28	704059	3181	22036
Solarworld Ener	279.05	5.64	419569	3137	13273
Mahindra Holida	305.25	-1.09	456239	3414	13262
Mishra Dhatu Ni	350.6	10.08	4342467	38294	11240
JNK India	254.8	-0.89	174067	1670	10322
ITC	402.4	-0.47	45895849	839511	5367
Timex Group Ind	329.5	-6.33	5892065	107836	5364
India Pesticide	182.4	5.25	703185	15149	4542
Precision Wires	259.1	9.14	509550	17680	2782
Modison	156.9	9.15	60228	2406	2404
Waa Solar	55.62	20	288000	11680	2366
TATA Cons. Prod	1194.45	1.78	273092	12128	2152
Scoda Tubes	160	-1.9	165166	8468	1851
Shanti Educatio	191.75	3.23	2925433	155064	1787
Chalet Hotels	870.25	0.35	112369	6445	1643
Hind Aluminium	83.85	19.99	145782	9805	1387
Le Lavoir	188.1	-9.98	32594	2301	1317
Shree Metalloys	47.32	14.47	102513	7406	1284
Parshwanath	110	-0.05	15260	1185	1187

Price Shockers - NSE				
Company name	LCP	Prv Close	% Chg	Volume
Waa Solar	55.62	46.35	20	288000
Nagpur Power	141.14	117.62	20	85237
Hind Aluminium	83.85	69.88	19.99	145782
Worth Periphera	168	141	19.15	21
Orient Bell	314.45	269	16.9	5138
Captain Technoc	169.5	148	14.53	1500
Shree Metalloys	47.32	41.34	14.47	102513
Medico Intercon	37.6	32.85	14.46	40846
Madhuveer Com	259.15	227.7	13.81	81857
Madhusudan Ind	37.47	33.1	13.2	678
Cubex Tubings	126.7	112.7	12.42	304917
BIRLANU	1702.55	1520.9	11.94	162937
High Energy	604.65	544.1	11.13	37977
Som Datt Fin	127.35	115	10.74	27503
Sangal Papers	195.9	177	10.68	261
Mishra Dhatu	350.6	318.5	10.08	4342467
MMTC	70.66	64.21	10.05	8326264

Nifty 50 Stocks - Summary Details											
Symbol	LTP	Chng	% Chng	Volume (lacs)	Turnover (crs.)	52w High	Diff with 52w H	52w Low	Diff with 52w L	365 days % chng	30 days % chng
NIFTY 50	25942.10	-100.20	-0.38%	2343.13	18184	26326	1.46%	21744	19.31%	-1.00%	8.94%
ADANIENT	2201.00	-28.90	-1.30%	6.91	153	2617	15.88%	1968	11.87%	-3.38%	-8.58%
ADANIPTS	1453.40	-33.70	-2.27%	15.68	229	1549	6.17%	1011	43.79%	-4.12%	18.18%
APOLLOHOSP	7082.00	-74.00	-1.03%	2.34	167	8100	12.56%	6001	18.01%	-3.42%	-2.23%
ASIANPAINT	2775.00	28.50	1.04%	8.16	225	2986	7.06%	2125	30.60%	-3.44%	22.19%
AXISBANK	1231.00	2.80	0.23%	22.10	271	1304	5.60%	934	31.87%	-3.73%	14.34%
BAJAJ-AUTO	9096.00	31.50	0.35%	2.64	240	9490	4.15%	7089	28.31%	0.15%	1.78%
BAJAJFINSV	2012.00	-5.60	-0.28%	14.15	284	2195	8.34%	1554	29.43%	-3.91%	27.40%
BAJFINANCE	998.50	-1.50	-0.15%	67.15	668	1103	9.43%	679	47.01%	-3.81%	-85.55%
BEL	393.55	-4.90	-1.23%	156.90	624	436	9.74%	240	63.81%	-4.49%	34.65%
BHARTIARTL	2081.40	-24.00	-1.14%	23.71	495	2175	4.28%	1560	33.47%	-0.95%	30.11%
CIPLA	1492.00	-14.00	-0.93%	10.78	162	1673	10.82%	1335	11.76%	-2.44%	-0.84%
COALINDIA	400.20	-1.95	-0.48%	61.06	245	417	4.09%	349	14.59%	6.51%	5.30%
DRREDDY	1270.00	0.70	0.06%	8.11	103	1406	9.67%	1020	24.51%	0.78%	-8.70%
EICHERMOT	7275.50	-48.50	-0.66%	2.83	206	7375	1.34%	4646	56.60%	3.10%	49.11%
ETERNAL	283.00	1.25	0.44%	131.75	374	368	23.19%	195	45.28%	-5.75%	#VALUE!
GRASIM	2846.00	28.30	1.00%	6.07	172	2978	4.43%	2277	24.99%	3.76%	14.60%
HCLTECH	1630.60	-30.30	-1.82%	15.16	249	2012	18.96%	1303	25.17%	0.41%	-13.81%
HDFCBANK	992.80	0.70	0.07%	135.46	1343	1021	2.71%	812	22.24%	-1.58%	-44.85%
HDFCLIFE	746.75	-1.70	-0.23%	29.12	217	821	9.02%	584	27.80%	-2.34%	20.03%
HINDALCO	865.35	-7.55	-0.86%	98.36	856	887	2.49%	546	58.36%	7.00%	40.10%
HINDUNILVR	2295.90	10.50	0.46%	10.87	249	2750	16.51%	2136	7.49%	-7.03%	-2.05%
ICICIBANK	1343.60	-6.80	-0.50%	60.57	815	1500	10.43%	1186	13.29%	-3.28%	2.73%
INDIGO	5085.00	11.00	0.22%	5.82	296	6233	18.41%	3945	28.90%	-13.83%	8.62%
INFY	1645.00	-11.10	-0.67%	40.63	669	1983	17.04%	1307	25.86%	5.42%	-14.19%
ITC	402.95	-1.20	-0.30%	66.48	268	491	17.93%	390	3.28%	-0.41%	-15.88%
JIOFIN	293.80	-3.15	-1.06%	47.13	139	339	13.23%	199	47.90%	-4.00%	-3.61%
JSWSTEEL	1092.50	-1.90	-0.17%	30.85	339	1224	10.74%	880	24.15%	-5.83%	19.63%
KOTAKBANK	2157.10	-7.10	-0.33%	9.72	210	2302	6.29%	1724	25.14%	1.61%	22.65%
LT	4039.00	-8.30	-0.21%	9.52	385	4140	2.44%	2965	36.21%	-0.76%	11.93%
M&M	3595.00	-28.10	-0.78%	10.35	374	3795	5.27%	2425	48.25%	-4.40%	17.80%
MARUTI	16552.00	-44.00	-0.27%	2.52	417	16720	1.00%	10750	53.97%	4.04%	51.19%
MAXHEALTH	1062.00	-12.30	-1.14%	14.06	150	1314	19.20%	940	12.97%	-8.49%	-5.53%
NESTLEIND	1280.00	7.40	0.58%	8.88	114	1312	2.41%	1055	21.33%	1.50%	-40.89%
NTPC	325.65	1.55	0.48%	140.44	456	371	12.33%	293	11.22%	-0.29%	-2.84%
ONGC	234.99	0.46	0.20%	126.21	298	274	14.08%	205	14.63%	-3.47%	-0.88%
POWERGRID	260.80	-4.65	-1.75%	72.71	190	322	19.01%	247	5.46%	-3.46%	-15.77%
RELIANCE	1546.70	-12.50	-0.80%	59.72	924	1581	2.19%	1115	38.74%	-1.40%	26.58%
SBILIFE	2009.60	-9.50	-0.47%	4.08	82	2087	3.69%	1373	46.41%	2.23%	43.02%
SBIN	965.70	-0.60	-0.06%	52.67	508	999	3.33%	680	42.01%	-1.42%	20.68%
SHRIRAMFIN	953.50	-6.75	-0.70%	48.98	468	984	3.07%	493	93.27%	12.19%	-67.04%
SUNPHARMA	1718.00	-1.50	-0.09%	18.01	310	1910	10.05%	1548	10.98%	-6.25%	-7.74%
TATACONSUM	1194.40	18.70	1.59%	18.06	215	1203	0.70%	893	33.74%	1.94%	31.64%
TATASTEEL	172.30	3.18	1.88%	480.02	829	187	7.83%	123	40.52%	2.58%	24.04%
TCS	3256.00	-24.00	-0.73%	20.79	677	4323	24.68%	2867	13.58%	3.63%	-21.93%
TECHM	1613.90	1.60	0.10%	8.91	144	1774	9.00%	1209	33.45%	6.27%	-5.80%
TITAN	3985.00	-7.00	-0.18%	12.43	498	4032	1.16%	2925	36.24%	1.94%	20.38%
TMPV	358.95	0.15	0.04%	100.50	362	810	55.69%	338	6.29%	0.50%	#VALUE!
TRENT	4224.20	-61.10	-1.43%	4.23	180	7493	43.63%	3930	7.48%	-0.57%	-40.63%
ULTRACEMCO	11820.00	26.00	0.22%	1.98	233	13097	9.75%	10048	17.64%	1.72%	3.44%
WIPRO	264.25	-2.05	-0.77%	37.55	100	325	18.59%	228	15.90%	5.90%	-14.51%

## Disclaimer / Disclosures

### ANALYST CERTIFICATION

I, Mrs. Vaishali Parekh B.com, Research Analyst, author and the name subscribed to this report, hereby certify that all of the views expressed in this research report accurately reflect our views about the subject issuer(s) or securities. We also certify that no part of our compensation was, is, or will be directly or indirectly related to the specific recommendation(s) or view(s) in this report.

Terms & conditions and other disclosures:

Prabhudas Lilladher Pvt. Ltd, Mumbai, India (hereinafter referred to as "PL") is engaged in the business of Stock Broking, Portfolio Manager, Depository Participant and distribution for third party financial products. PL is a subsidiary of Prabhudas Lilladher Advisory Services Pvt Ltd. which has its various subsidiaries engaged in business of commodity broking, investment banking, financial services (margin funding) and distribution of third party financial/other products, details in respect of which are available at [www.plindia.com](http://www.plindia.com)

This document has been prepared by the Research Division of PL and is meant for use by the recipient only as information and is not for circulation. This document is not to be reported or copied or made available to others without prior permission of PL. It should not be considered or taken as an offer to sell or a solicitation to buy or sell any security.

The information contained in this report has been obtained from sources that are considered to be reliable. However, PL has not independently verified the accuracy or completeness of the same. Neither PL nor any of its affiliates, its directors or its employees accepts any responsibility of whatsoever nature for the information, statements and opinion given, made available or expressed herein or for any omission therein.

Recipients of this report should be aware that past performance is not necessarily a guide to future performance and value of investments can go down as well. The suitability or otherwise of any investments will depend upon the recipient's particular circumstances and, in case of doubt, advice should be sought from an independent expert/advisor.

Either PL or its affiliates or its directors or its employees or its representatives or its clients or their relatives may have position(s), make market, act as principal or engage in transactions of securities of companies referred to in this report and they may have used the research material prior to publication.

PL may from time to time solicit or perform investment banking or other services for any company mentioned in this document.

PL is registered as Research Analyst under Securities and Exchange Board of India (Research Analysts) Regulations, 2014 PL submits that no material disciplinary action has been taken on us by any Regulatory Authority impacting Equity Research Analysis activities.

PL or its research analysts or its associates or his relatives do not have any financial interest in the subject company.

PL or its research analysts or its associates or his relatives do not have actual/beneficial ownership of one per cent or more securities of the subject company at the end of the month immediately preceding the date of publication of the research report.

PL or its research analysts or its associates or his relatives do not have any material conflict of interest at the time of publication of the research report.

PL or its associates might have received compensation from the subject company in the past twelve months.

PL or its associates might have managed or co-managed public offering of securities for the subject company in the past twelve months or mandated by the subject company for any other assignment in the past twelve months.

PL or its associates might have received any compensation for investment banking or merchant banking or brokerage services from the subject company in the past twelve months.

PL or its associates might have received any compensation for products or services other than investment banking or merchant banking or brokerage services from the subject company in the past twelve months PL or its associates might have received any compensation or other benefits from the subject company or third party in connection with the research report.

PL encourages independence in research report preparation and strives to minimize conflict in preparation of research report. PL or its analysts did not receive any compensation or other benefits from the subject Company or third party in connection with the preparation of the research report. PL or its Research Analysts do not have any material conflict of interest at the time of publication of this report.

It is confirmed that Mrs.Vaishali Parekh B.com, Research Analyst of this report has not received any compensation from the companies mentioned in the report in the preceding twelve months compensation of our Research Analysts is not based on any specific merchant banking, investment banking or brokerage service transactions.

The Research analysts for this report certifies that all of the views expressed in this report accurately reflect his or her personal views about the subject company or companies and its or their securities, and no part of his or her compensation was, is or will be, directly or indirectly related to specific recommendations or views expressed in this report.

The research analysts for this report has not served as an officer, director or employee of the subject company PL or its research analysts have not engaged in market making activity for the subject company

Our sales people, traders, and other professionals or affiliates may provide oral or written market commentary or trading strategies to our clients that reflect opinions that are contrary to the opinions expressed herein, and our proprietary trading and investing businesses may make investment decisions that are inconsistent with the recommendations expressed herein. In reviewing these materials, you should be aware that any or all of the foregoing, among other things, may give rise to real or potential conflicts of interest.

PL and its associates, their directors and employees may (a) from time to time, have a long or short position in, and buy or sell the securities of the subject company or (b) be engaged in any other transaction involving such securities and earn brokerage or other compensation or act as a market maker in the financial instruments of the subject company or act as an advisor or lender/borrower to the subject company or may have any other potential conflict of interests with respect to any recommendation and other related information and opinions.