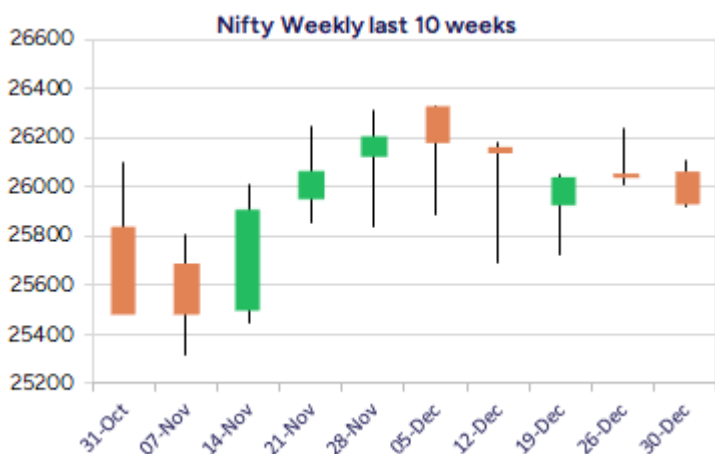
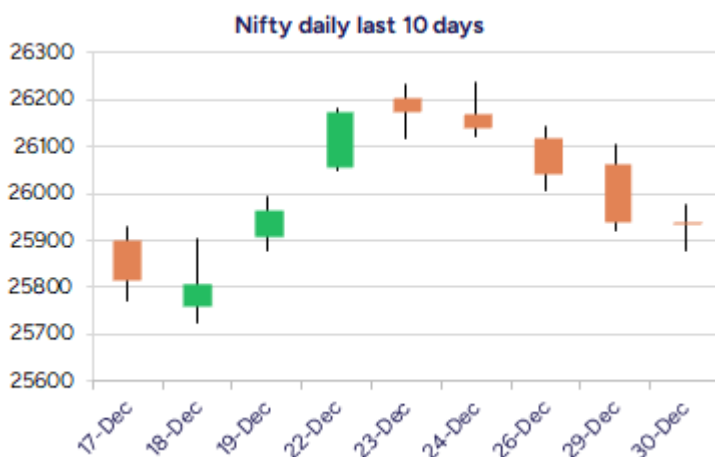


Date: 31<sup>st</sup> December 2025

\* Sensex 84675.08 - 20.46

\* Nifty 25938.85 - 03.25

\* Bank Nifty 59171.25 + 238.90



\*Blue candle → Close rate > Open rate \* Red candle → Close rate < Open rate

## Market Preview

### Nifty amid volatility ends on a flat note

Nifty witnessed high fluctuations during the session taking support near the important 50EMA zone at 25880 zone and with some recovery happening ended on a flat note. BankNifty once again witnessed a bounce back from 58700 zone and closed in the green near the 59200 zone with bias maintained intact. The market breadth was slightly on the weaker end with the advance decline indicating a ratio of 2:3 at close.

## Market Forecast

### Nifty daily range 25800-26200

Nifty, after 3 sessions of losing streak, witnessed a volatile session on the monthly expiry day of the F&O segment with the index respecting the low made near the 25880 zone during the day and closing on a flat note having the important and crucial support near the 50EMA level at 25850 zone sustained and expecting for a revival in the coming sessions. The index would need to move past the 26200 zone to establish conviction and thereafter, expect to continue with the upward move to trigger for fresh breakout in the coming days.

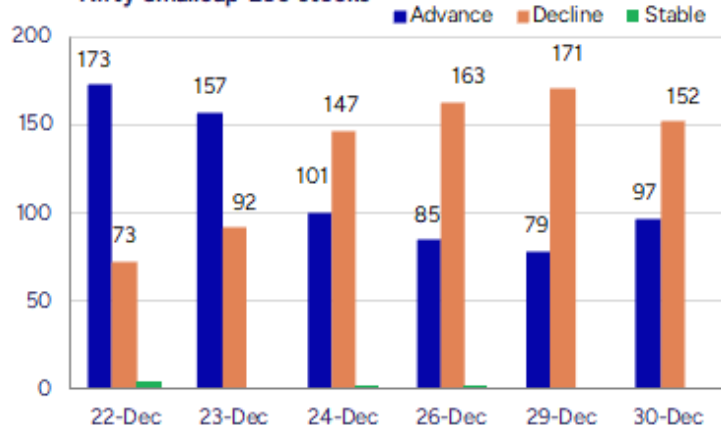
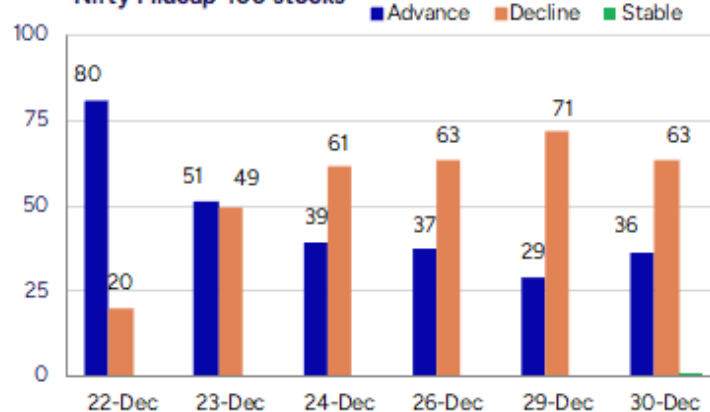
BankNifty once again respected the important support zone of 58700 level during the intraday session and witnessed a revival to close near the 59200 zone with bias once again maintained intact, continuing with the overall consolidation phase. With the PSU Banks looking good and picking up momentum during the session, one can expect for further gains and on the upside, as mentioned earlier, the index would desperately need a decisive breach above the 59800 level to trigger for a fresh upward move in the coming days.

The support for the day is seen at 25800 levels, while the resistance is seen at 26200 levels. BankNifty would have the daily range of 58800-59800 levels.

Sensex	Period	Closing	% Chng	Trend	Reversal	2 Sup	1 Sup	Pivot	1 Res	2 Res
Nifty	Daily	25938.85	-0.01%	-2	26067.35	25832	25886	25931	25984	26030
	Weekly	26042.30	0.29%	-3	26141.10	25869	25956	26095	26182	26322
	Monthly	26202.95	1.87%	2	25767.20	24953	25578	25944	26569	26935
Bank Nifty	Daily	59171.25	0.41%	1	59149.70	58525	58848	59061	59383	59596
	Weekly	59011.35	-0.10%	-2	59690.75	58615	58813	59145	59343	59675
	Monthly	59752.70	3.42%	2	58620.10	56200	57976	58935	60712	61671
Sensex	Daily	84675.08	-0.02%	-3	85139.45	84315	84495	84651	84831	84987
	Weekly	85041.45	0.13%	-2	85480.10	84443	84742	85237	85537	86032
	Monthly	85706.67	2.11%	2	84235.40	81429	83568	84811	86950	88193

**Gainers - Losers ( Nifty 500 Stocks )**

Gainers				Losers			
Company Name	Last Price	% Gain	Volume	Company Name	Last Price	% Loss	Volume
SAIL	141.02	5.17%	41240216	Caplin Labs	1,790.70	-5.43%	597715
Radico Khaitan	3,376.00	3.89%	672845	Coromandel Int	2236.5	-5.39%	1849292
NMDC Steel	43.27	3.54%	8600295	CreditAccess Gr	1,235.70	-3.57%	538870
Ola Electric	36.58	3.25%	48446883	Amber Enterpris	6,264.50	-3.52%	499452
Sai Life Sci	910.35	2.71%	391387	Berger Paints	525.55	-3.50%	2245520
Shriram Finance	979.40	2.50%	17753552	Bharti Hexacom	1780.8	-3.30%	698906
UPL	787.35	2.13%	8328627	Ceat	3703.5	-3.16%	292882

**Nifty Smallcap-250 stocks**

**Nifty Midcap-100 stocks**


## Nifty Daily chart with RSI indicator



## BankNifty Daily chart with RSI indicator



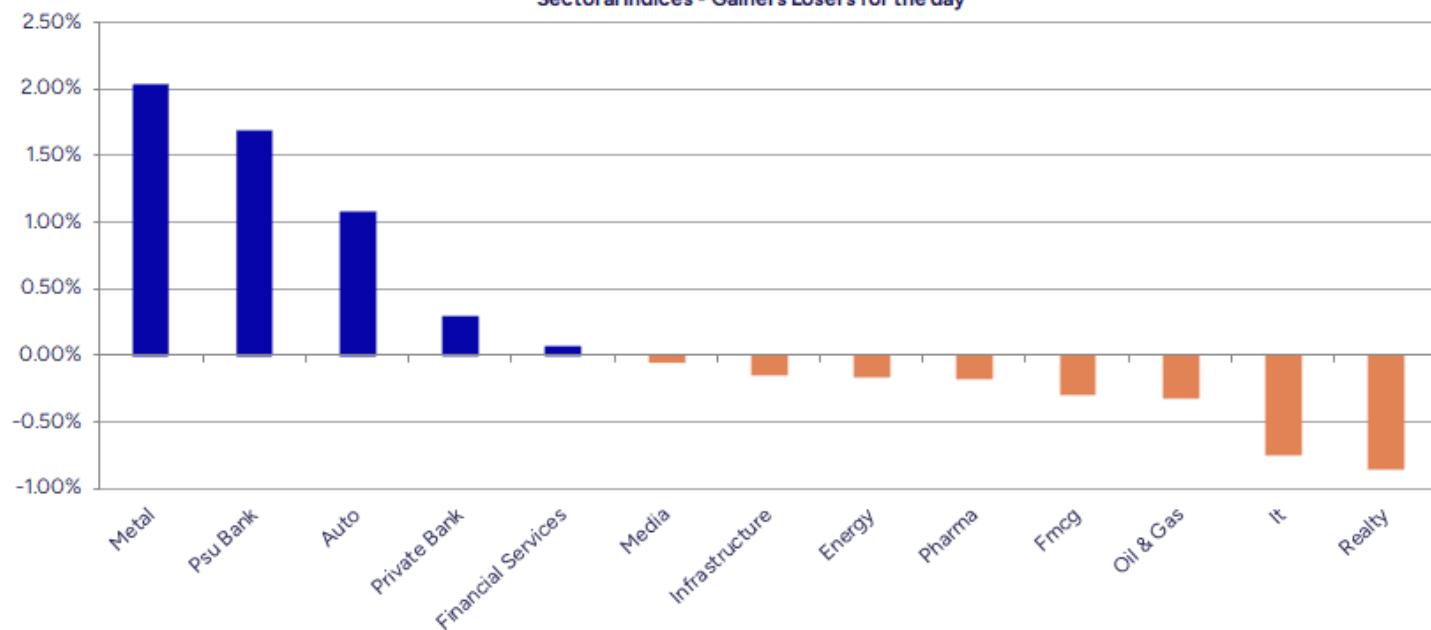
Breakouts - Cross above 200 DMA			
Company Name	LCP	Change %	200 DMA
Orient Tech	394.25	10.71	356.11
Sukhjit Starch	189.59	6.11	178.67
Indo Count	297.5	5.22	282.75
Century Extr	23.4	3.77	22.55
Nakoda Group	31.3	2.83	30.44
Metro	1181.5	2.05	1157.8
JM Financial	148.3	1.90	145.54
Cantabil Retail	260.23	1.74	255.79
Manaksia Alumin	27.52	1.62	27.08
Dolat Algotech	87.6	1.41	86.38
Giriraj Civil D	259.8	1.16	256.81
Orbit Exports	192.29	1.10	190.2
PNB Housing Fin	946.7	0.99	937.46
Nagarjuna Fert	5.29	0.95	5.24
Sagardeep Alloy	28.95	0.66	28.76
Surana Telecom	20.15	0.55	20.04
Sun TV Network	590.15	0.47	587.41
Orissa Minerals	5050	0.41	5029.18

\* Stocks crossing above its Simple Moving Average (200DMA)

Breakdown - Cross below 200 DMA			
Company Name	LCP	Change %	200 DMA
Intellect Desig	945.5	-4.72	992.39
SEL Mgf Company	32.02	-4.07	33.38
Kavveri Defence	68.97	-3.97	71.82
NK Industries	64.7	-3.81	67.26
Garden Reach Sh	2412.9	-2.23	2467.9
Coromandel Int	2220	-2.06	2266.72
Motilal Oswal	834.7	-2.05	852.19
Signet Ind	54.75	-1.88	55.8
Jubilant Ing.	694	-1.80	706.7
IBL Finance	60.05	-1.70	61.09
RPG Life	2261.6	-1.69	2300.45
Fineotex Chem	24.63	-1.16	24.92
Sunflag Iron	263.4	-1.09	266.3
Astra Microwave	960	-0.98	969.46
Rajputana Bio	241.5	-0.97	243.87
Engineers India	199	-0.91	200.83
Eternal	277.2	-0.79	279.41
Moksh Ornaments	14.13	-0.77	14.24

\* Stocks crossing below its Simple Moving Average (200DMA)

Sectoral Indices - Gainers Losers for the day



Stocks witnessing a volume surge as compared to their 5 day average volume

Watch out for the stocks that have seen a huge spurt in its share price over the last three days

Volume Shockers - NSE					
Company name	LCP	% Chg	Volume	Avg Vol *	% Chg
Systematix Corp	135.35	-9.98	2190414	1994	109728
Indo Count	295.55	13.5	919157	8508	10703
KPIGREEN	480.9	19.03	3357276	35230	9429
Mishra Dhatu Ni	353.25	0.76	3327332	38294	8589
Timex Group Ind	340.95	3.47	6173211	107836	5625
EIH	363.85	-0.01	491510	9222	5230
Emami	527.75	-0.71	415053	10546	3836
Waa Solar	66.74	19.99	382400	11680	3174
Akzo Nobel	3211	2.14	81864	2678	2957
Max Financial	1642.9	-0.19	59175	2384	2382
Shree Metalloys	56.78	19.99	181351	7406	2349
Scoda Tubes	157.85	0.03	174225	8468	1958
SIS	334.6	-0.54	18875	1088	1635
Sigma Solve	58.4	3.31	22410	1373	1532
Khadim India	173	9.05	36283	2339	1451
Nagpur Power	145	2.73	336751	22019	1429
JNK India	246.4	-3.3	24130	1670	1345
Craftsman	7150	1.58	14221	1098	1195
Solarworld Ener	274.05	-1.79	40409	3137	1188
Tata Comm	1813	0.71	70853	6516	987
Le Lavoir	180.9	-3.83	23709	2301	930

Price Shockers - NSE				
Company name	LCP	Prv Close	% Chg	Volume
Waa Solar	66.74	46.35	43.99	382400
Hind Aluminium	100.62	69.88	43.99	359172
Shree Metalloys	56.78	41.34	37.35	181351
Nagpur Power	145	117.62	23.28	336751
ORIENT CERATECH	52.7	42.99	22.59	68082
Silver Touch Te	1030.2	880.95	16.94	82262
Jayaswal Neco	93.2	80.06	16.41	2261606
KPIGREEN	480.9	416.65	15.42	3357276
Madhuveer Com	257	227.7	12.87	48406
Hind Copper	533.9	475.45	12.29	15272861
Indo Farm Equip	212.95	190.2	11.96	33167
Indo Count	295.55	264.45	11.76	919157
Garnet Construc	62.28	56.06	11.1	37496
Mishra Dhatu	353.25	318.5	10.91	3327332
High Energy	602.5	544.1	10.73	11447
BL Kashyap	55.35	50.15	10.37	83442
Cupid Breweries	39.7	36.01	10.25	39545
A-1	1932.9	1753.25	10.25	131919
IMEC Services	328.8	298.25	10.24	9391
AAYUSH WELLNESS	63.72	57.8	10.24	243721
Checkpoint	108.82	98.71	10.24	16172



Nifty 50 stocks - Summary Details											
Symbol	LTP	Chng	% Chng	Volume (lacs)	Turnover (crs.)	52w High	Diff with 52w H	52w Low	Diff with 52w L	30 days % chng	365 days % chng
NIFTY 50	25938.85	-3.25	-0.01%	3968.42	39486.75	26325.80	1.47%	21743.65	19.29%	-1.00%	8.94%
ADANIENT	2215.80	12.60	0.57%	9.35	206.55	2616.50	15.31%	1967.52	12.62%	-3.38%	-8.58%
ADANIPTS	1468.50	14.10	0.97%	34.63	506.25	1549.00	5.20%	1010.75	45.29%	-4.12%	18.18%
APOLLOHOSP	6985.50	-99.00	-1.40%	4.33	302.67	8099.50	13.75%	6001.00	16.41%	-3.42%	-2.23%
ASIANPAINT	2753.50	-21.90	-0.79%	48.33	1336.54	2985.70	7.78%	2124.75	29.59%	-3.44%	22.19%
AXISBANK	1246.00	14.00	1.14%	56.73	706.09	1304.00	4.45%	933.50	33.48%	-3.73%	14.34%
BAJAJ-AUTO	9298.00	211.00	2.32%	4.65	428.85	9490.00	2.02%	7089.35	31.15%	0.15%	1.78%
BAJAJFINSV	2040.20	28.10	1.40%	54.50	1096.88	2195.00	7.05%	1560.00	30.78%	-3.91%	27.40%
BAJFINANCE	991.00	-7.00	-0.70%	74.74	740.23	1102.50	10.11%	679.20	45.91%	-3.81%	-85.55%
BEL	395.95	2.70	0.69%	377.26	1481.80	436.00	9.19%	240.25	64.81%	-4.49%	34.65%
BHARTIARTL	2099.40	17.80	0.86%	69.83	1465.35	2174.50	3.45%	1559.50	34.62%	-0.95%	30.11%
CIPLA	1488.90	-5.10	-0.34%	19.93	296.38	1673.00	11.00%	1335.00	11.53%	-2.44%	-0.84%
COALINDIA	398.15	-2.50	-0.62%	44.17	175.83	417.25	4.58%	349.25	14.00%	6.51%	5.30%
DRREDDY	1263.00	-5.60	-0.44%	11.24	142.20	1405.90	10.16%	1020.00	23.82%	0.78%	-8.70%
EICHERMOT	7132.50	-139.50	-1.92%	19.76	1426.46	7374.50	3.28%	4646.00	53.52%	3.10%	49.11%
ETERNAL	276.60	-6.25	-2.21%	378.16	1049.12	368.45	24.93%	194.80	41.99%	-5.75%	#VALUE!
GRASIM	2840.30	-2.10	-0.07%	7.30	207.47	2977.80	4.62%	2276.95	24.74%	3.76%	14.60%
HCLTECH	1621.50	-9.30	-0.57%	33.23	538.31	2012.20	19.42%	1302.75	24.47%	0.41%	-13.81%
HDFCBANK	995.00	3.30	0.33%	331.53	3279.31	1020.50	2.50%	812.15	22.51%	-1.58%	-44.85%
HDFCLIFE	746.15	-0.30	-0.04%	137.87	1022.56	820.75	9.09%	584.30	27.70%	-2.34%	20.03%
HINDALCO	883.30	18.30	2.12%	152.80	1347.55	888.30	0.56%	546.45	61.64%	7.00%	40.10%
HINDUNILVR	2290.00	-3.30	-0.14%	15.55	356.10	2750.00	16.73%	2136.00	7.21%	-7.03%	-2.05%
ICICIBANK	1347.00	3.70	0.28%	186.20	2498.69	1500.00	10.20%	1186.00	13.58%	-3.28%	2.73%
INDIGO	5008.00	-77.50	-1.52%	13.07	655.66	6232.50	19.65%	3945.00	26.95%	-13.83%	8.62%
INFY	1623.50	-21.20	-1.29%	93.87	1526.05	1982.80	18.12%	1307.00	24.22%	5.42%	-14.19%
ITC	401.10	-1.50	-0.37%	123.40	495.11	491.00	18.31%	390.15	2.81%	-0.41%	-15.88%
JIOFIN	293.20	-0.75	-0.26%	68.41	200.08	338.60	13.41%	198.65	47.60%	-4.00%	-3.61%
JSWSTEEL	1110.00	17.40	1.59%	16.08	177.48	1223.90	9.31%	880.00	26.14%	-5.83%	19.63%
KOTAKBANK	2155.20	-3.40	-0.16%	56.72	1220.34	2301.90	6.37%	1723.75	25.03%	1.61%	22.65%
LT	4056.00	17.30	0.43%	13.62	551.28	4140.00	2.03%	2965.30	36.78%	-0.76%	11.93%
M&M	3660.00	67.90	1.89%	20.62	752.07	3795.00	3.56%	2425.00	50.93%	-4.40%	17.80%
MARUTI	16625.00	83.00	0.50%	10.56	1758.57	16818.00	1.15%	10750.10	54.65%	4.04%	51.19%
MAXHEALTH	1046.60	-17.50	-1.64%	115.81	1205.20	1314.30	20.37%	940.05	11.33%	-8.49%	-5.53%
NESTLEIND	1271.60	-8.40	-0.66%	20.43	260.87	1311.60	3.05%	1055.00	20.53%	1.50%	-40.89%
NTPC	325.25	-0.25	-0.08%	80.36	261.01	371.45	12.44%	292.80	11.08%	-0.29%	-2.84%
ONGC	234.50	-0.32	-0.14%	62.35	146.18	273.50	14.26%	205.00	14.39%	-3.47%	-0.88%
POWERGRID	259.45	-1.15	-0.44%	109.29	284.51	322.00	19.43%	247.30	4.91%	-3.46%	-15.77%
RELIANCE	1541.00	-4.60	-0.30%	88.16	1360.41	1581.30	2.55%	1114.85	38.22%	-1.40%	26.58%
SBILIFE	2019.70	9.90	0.49%	31.67	630.23	2086.60	3.21%	1372.55	47.15%	2.23%	43.02%
SBIN	973.10	8.05	0.83%	150.27	1460.64	999.00	2.59%	680.00	43.10%	-1.42%	20.68%
SHRIRAMFIN	974.55	19.05	1.99%	177.56	1733.93	984.60	1.02%	493.35	97.54%	12.19%	-67.04%
SUNPHARMA	1720.00	2.80	0.16%	26.39	453.31	1910.00	9.95%	1548.00	11.11%	-6.25%	-7.74%
TATACONSUM	1173.80	-21.40	-1.79%	22.57	266.70	1202.80	2.41%	893.10	31.43%	1.94%	31.64%
TMPV	360.90	2.30	0.64%	138.06	499.02	810.00	55.44%	337.70	6.87%	0.50%	#VALUE!
TATASTEEL	175.68	3.38	1.96%	337.38	588.25	186.94	6.02%	122.62	43.27%	2.58%	24.04%
TCS	3255.00	3.50	0.11%	28.08	912.62	4322.95	24.70%	2866.60	13.55%	3.63%	-21.93%
TECHM	1602.80	-9.60	-0.60%	19.74	316.71	1773.60	9.63%	1209.40	32.53%	6.27%	-5.80%
TITAN	3973.00	-10.70	-0.27%	11.70	465.31	4031.70	1.46%	2925.00	35.83%	1.94%	20.38%
TRENT	4210.00	-16.00	-0.38%	6.70	282.70	7493.05	43.81%	3930.10	7.12%	-0.57%	-40.63%
ULTRACEMCO	11701.00	-98.00	-0.83%	2.36	276.50	13097.00	10.66%	10047.85	16.45%	1.72%	3.44%
WIPRO	264.31	0.07	0.03%	51.11	134.85	324.60	18.57%	228.00	15.93%	5.90%	-14.51%

## Disclaimer / Disclosures

### ANALYST CERTIFICATION

I, Mrs. Vaishali Parekh B.com, Research Analyst, author and the name subscribed to this report, hereby certify that all of the views expressed in this research report accurately reflect our views about the subject issuer(s) or securities. We also certify that no part of our compensation was, is, or will be directly or indirectly related to the specific recommendation(s) or view(s) in this report.

Terms & conditions and other disclosures:

Prabhudas Lilladher Pvt. Ltd, Mumbai, India (hereinafter referred to as "PL") is engaged in the business of Stock Broking, Portfolio Manager, Depository Participant and distribution of third party financial products. PL is a subsidiary of Prabhudas Lilladher Advisory Services Pvt Ltd. which has its various subsidiaries engaged in business of commodity broking, investment banking, financial services (margin funding) and distribution of third party financial/other products, details in respect of which are available at [www.plindia.com](http://www.plindia.com)

This document has been prepared by the Research Division of PL and is meant for use by the recipient only as information and is not for circulation. This document is not to be reported or copied or made available to others without prior permission of PL. It should not be considered or taken as an offer to sell or a solicitation to buy or sell any security.

The information contained in this report has been obtained from sources that are considered to be reliable. However, PL has not independently verified the accuracy or completeness of the same. Neither PL nor any of its affiliates, its directors or its employees accepts any responsibility of whatsoever nature for the information, statements and opinion given, made available or expressed herein or for any omission therein.

Recipients of this report should be aware that past performance is not necessarily a guide to future performance and value of investments can go down as well. The suitability or otherwise of any investments will depend upon the recipient's particular circumstances and, in case of doubt, advice should be sought from an independent expert/advisor.

Either PL or its affiliates or its directors or its employees or its representatives or its clients or their relatives may have position(s), make market, act as principal or engage in transactions of securities of companies referred to in this report and they may have used the research material prior to publication.

PL may from time to time solicit or perform investment banking or other services for any company mentioned in this document.

PL is registered as Research Analyst under Securities and Exchange Board of India (Research Analysts) Regulations, 2014 PL submits that no material disciplinary action has been taken on us by any Regulatory Authority impacting Equity Research Analysis activities.

PL or its research analysts or its associates or his relatives do not have any financial interest in the subject company.

PL or its research analysts or its associates or his relatives do not have actual/beneficial ownership of one per cent or more securities of the subject company at the end of the month immediately preceding the date of publication of the research report.

PL or its research analysts or its associates or his relatives do not have any material conflict of interest at the time of publication of the research report.

PL or its associates might have received compensation from the subject company in the past twelve months.

PL or its associates might have managed or co-managed public offering of securities for the subject company in the past twelve months or mandated by the subject company for any other assignment in the past twelve months.

PL or its associates might have received any compensation for investment banking or merchant banking or brokerage services from the subject company in the past twelve months.

PL or its associates might have received any compensation for products or services other than investment banking or merchant banking or brokerage services from the subject company in the past twelve months PL or its associates might have received any compensation or other benefits from the subject company or third party in connection with the research report.

PL encourages independence in research report preparation and strives to minimize conflict in preparation of research report. PL or its analysts did not receive any compensation or other benefits from the subject Company or third party in connection with the preparation of the research report. PL or its Research Analysts do not have any material conflict of interest at the time of publication of this report.

It is confirmed that Mrs. Vaishali Parekh B.com, Research Analyst of this report has not received any compensation from the companies mentioned in the report in the preceding twelve months compensation of our Research Analysts is not based on any specific merchant banking, investment banking or brokerage service transactions.

The Research analysts for this report certifies that all of the views expressed in this report accurately reflect his or her personal views about the subject company or companies and its or their securities, and no part of his or her compensation was, is or will be, directly or indirectly related to specific recommendations or views expressed in this report.

The research analysts for this report has not served as an officer, director or employee of the subject company PL or its research analysts have not engaged in market making activity for the subject company

Our sales people, traders, and other professionals or affiliates may provide oral or written market commentary or trading strategies to our clients that reflect opinions that are contrary to the opinions expressed herein, and our proprietary trading and investing businesses may make investment decisions that are inconsistent with the recommendations expressed herein. In reviewing these materials, you should be aware that any or all of the foregoing, among other things, may give rise to real or potential conflicts of interest.

PL and its associates, their directors and employees may (a) from time to time, have a long or short position in, and buy or sell the securities of the subject company or (b) be engaged in any other transaction involving such securities and earn brokerage or other compensation or act as a market maker in the financial instruments of the subject company or act as an advisor or lender/borrower to the subject company or may have any other potential conflict of interests with respect to any recommendation and other related information and opinions.

**Regd. Office:** 3<sup>rd</sup> Floor, Sadhana House, 570, P. B. Marg, Behind Mahindra Tower, Worli, Mumbai - 400 018, India.