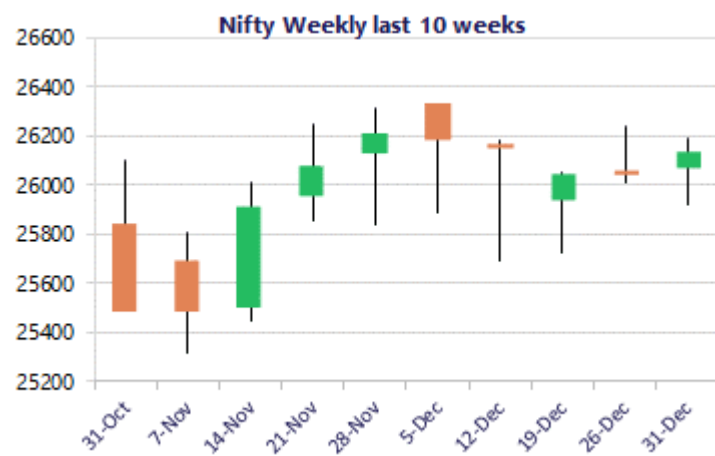
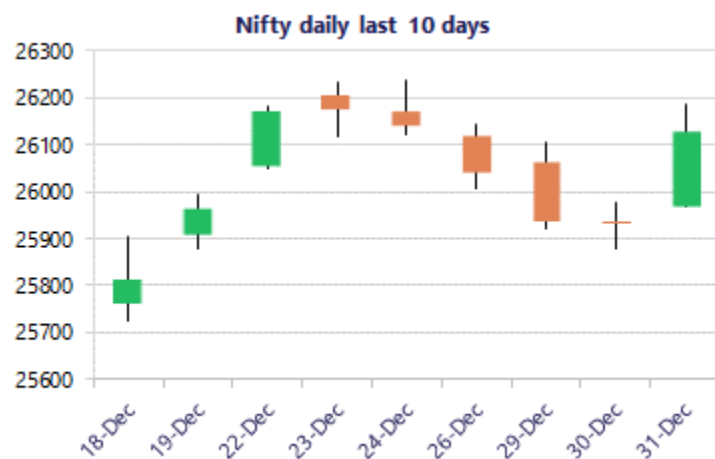


Date: 01<sup>st</sup> January 2026

\* Sensex 85220.60 + 545.52

\* Nifty 26129.60 + 190.75

\* Bank Nifty 59581.85 + 410.60



\*Blue candle → Close rate > Open rate \* Red candle → Close rate < Open rate

## Market Preview

### Nifty ends the year on an optimistic note

Nifty recovered strongly from the important support level of 25850 zone and closed on a positive note above the 26100 zone with bias improving and anticipating for further rise in the coming sessions. BankNifty gained during the intraday session closing near the 59600 zone with bias and sentiment getting better maintainign an optimisitic approach for the coming sessions. The market breadth was strong with the advance decline indicating a ratio of almost 3:1 at close.

## Market Forecast

### Nifty daily range 26000-26300

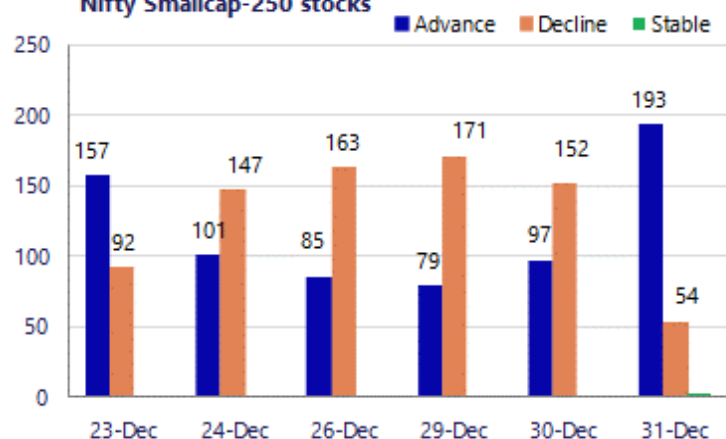
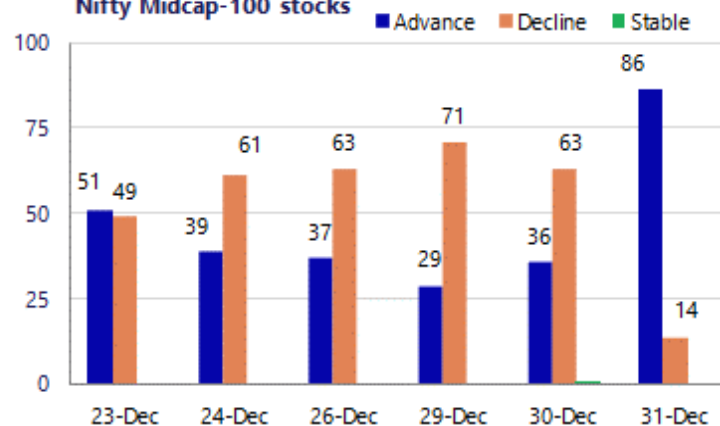
Nifty, once again sustaining the important 50EMA zone near the 25850 level, regained the upward move with bias improving and as the day progressed gained strength almost to touch the 26200 level. The index closed near the 26130 level with trend revival visible and can anticipate for further rise with the important support positioned near the 25850 level as we have been mentioning earlier. The index would need to move past the 26200 zone to establish conviction and thereafter, expect to continue with the upward move to trigger for fresh breakout in the coming days. BankNifty surged ahead with most of the PSU Banks performing and closed near the 59600 zone with bias once again improving and as said earlier, would need a decisive breakout above the tough resistance barrier of 59800 zone to trigger for a fresh upward move in the coming days. The important support is maintained near the 58700 zone and with the overall bias maintained with an optimistic approach, further gains are expected with the beginning of a new year.

The support for the day is seen at 26000 levels, while the resistance is seen at 26300 levels. BankNifty would have the daily range of 59200-60000 levels.

Sensex	Period	Closing	% Chng	Trend	Reversal	2 Sup	1 Sup	Pivot	1 Res	2 Res
Nifty	Daily	26129.60	0.74%	1	26091.90	25877	26003	26096	26222	26314
	Weekly	26042.30	0.29%	-3	26141.10	25869	25956	26095	26182	26322
	Monthly	26129.60	-0.28%	3	25829.00	25419	25774	26050	26405	26681
Bank Nifty	Daily	59581.85	0.69%	2	59281.90	58933	59257	59512	59836	60091
	Weekly	59011.35	-0.10%	-2	59690.75	58615	58813	59145	59343	59675
	Monthly	59581.85	-0.29%	3	58708.70	58069	58825	59469	60226	60870
Sensex	Daily	85220.60	0.64%	1	85167.50	84390	84805	85121	85537	85853
	Weekly	85041.45	0.13%	-2	85480.10	84443	84742	85237	85537	86032
	Monthly	85220.60	-0.57%	3	84363.05	83208	84214	85159	86166	87111

**Gainers - Losers ( Nifty 500 Stocks )**

Gainers				Losers			
Company Name	Last Price	% Gain	Volume	Company Name	Last Price	% Loss	Volume
Craftsman	7689.5	7.46%	433546	ABSL AMC	805.25	-2.84%	242892
Deepak Fert	1,287.10	6.46%	3216457	City Union Bank	290.8	-2.22%	2399733
Chennai Petro	836.2	4.78%	3334554	Asahi India	1,015.00	-2.18%	304935
Authum Invest	3,133.40	4.47%	142896	Emcure Pharmace	1,364.50	-2.01%	78179
Devyani Int	147.95	4.03%	5711419	APTUS VALUE	279.10	-1.92%	1152360
BPCL	384.00	3.92%	12047459	Bikaji Foods	749.8	-1.27%	111035
Carborundum	855.90	3.31%	103742	Adani Power	142.99	-1.15%	8460740

**Nifty Smallcap-250 stocks**

**Nifty Midcap-100 stocks**


## Nifty Daily chart with RSI indicator



## BankNifty Daily chart with RSI indicator



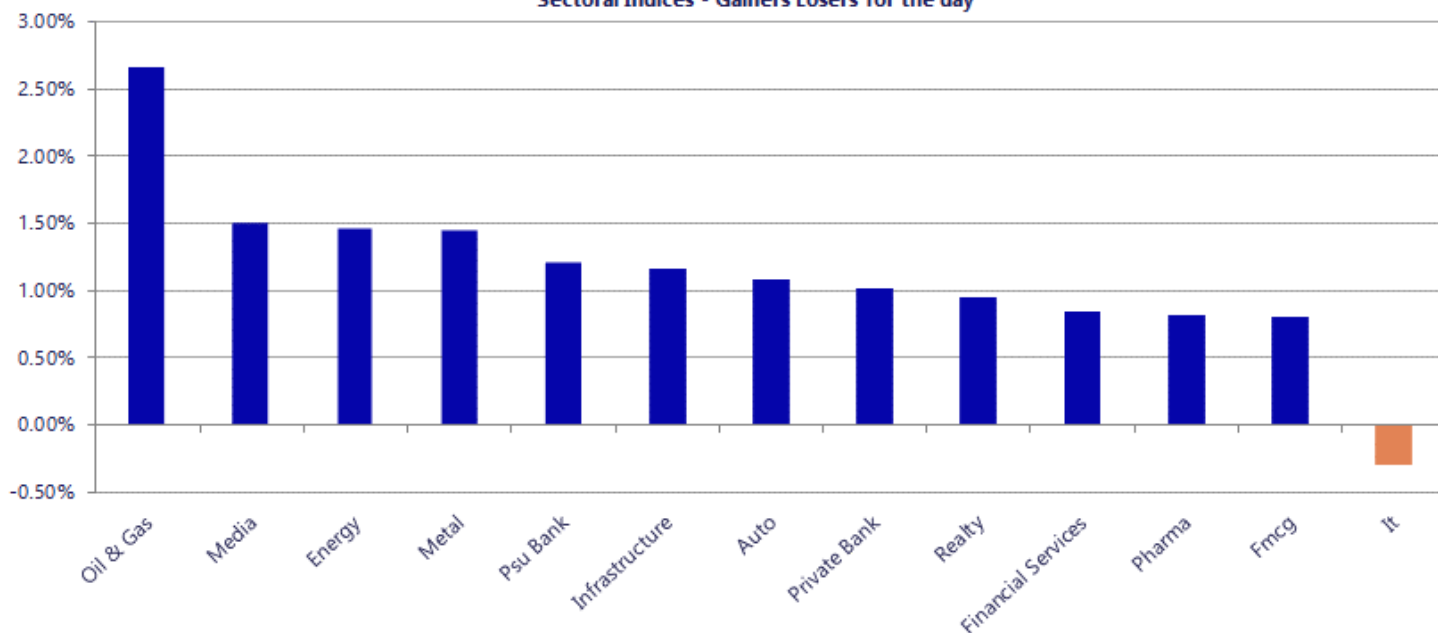
Breakouts - Cross above 200 DMA			
Company Name	LCP	Change %	200 DMA
California Soft	17.07	16.20	14.69
SAR Televenture	249.85	12.48	222.12
Metropolis	1929.9	3.29	1868.44
Shree Rama News	33.8	3.14	32.77
Renaissance	125.74	2.64	122.5
Ircon Internati	177.49	2.54	173.1
Religare Enterp	248.31	2.53	242.18
Welspun Enter	519	2.26	507.54
Coromandel Int	2318.1	2.16	2269.12
DOMS Industries	2614.8	2.11	2560.81
Sunflag Iron	272	2.10	266.4
Digispice Tech	23.85	2.10	23.36
Gandhar Oil	153.52	2.06	150.42
Gujarat Apollo	419.8	2.03	411.46
Oil India	424.45	1.98	416.19
CreditAccess Gr	1268.2	1.93	1244.15
IBL Finance	62.3	1.91	61.13
Sai Silks	157.16	1.88	154.26

\* Stocks crossing above its Simple Moving Average (200DMA)

Breakdown - Cross below 200 DMA			
Company Name	LCP	Change %	200 DMA
Sotac Pharma	123.1	-4.47	128.86
Rajesh Exports	183.88	-3.35	190.25
Ram Ratna Wires	307.75	-2.66	316.15
Sagardeep Alloy	28	-2.57	28.74
Rajputana Bio	240	-1.58	243.86
Usha Financial	40	-1.57	40.64
Ambey Labs	41.6	-1.33	42.16
STC India	127.71	-0.96	128.95
Nakoda Group	30.13	-0.92	30.41
Responsive Ind	200.39	-0.51	201.42
Ruby Mills	219.76	-0.49	220.85
Orissa Minerals	5001.5	-0.49	5026.05
Krishna Defence	795	-0.27	797.13
Century Extr	22.5	-0.27	22.56
Nagreeka Cap	27.7	-0.25	27.77
Ugro Capital	174.89	-0.25	175.32
Laxmi Goldorna	283.85	-0.13	284.22
Indo Count	282.65	-0.06	282.83

\* Stocks crossing below its Simple Moving Average (200DMA)

Sectoral Indices - Gainers Losers for the day



Stocks witnessing a volume surge as compared to their 5 day average

Watch out for the stocks that have seen a huge spurt in its share price over the last three days

Volume Shockers - NSE					
Company name	LCP	% Chg	Volume	Avg Vol *	% Chg
Indus Infra Tru	116.54	-0.43	6746982	8988	74967
Dynacons Sys	1020.6	11.83	233769	1739	13344
Grindwell Norto	1559.65	-2.22	162652	1299	12417
Globus Spirits	1068.9	8.76	247117	1995	12287
Nazara	274.45	3.82	2124826	19281	10920
Zydus Wellness	457.7	7.99	602613	5536	10785
Tega Industries	1949.5	0.1	205709	2176	9353
Privi Special	2804.1	-11.61	519544	6452	7953
Craftsman	7735.95	8.15	70967	1098	6361
Kotak Mahindra	2201.1	2.16	1763150	40464	4257
Gland	1721.15	3.36	529395	12382	4175
Mastek	2045.05	-0.64	154220	4241	3536
TBO Tek	1664	0.88	173438	5277	3187
Nexus Select	155	-0.64	477338	15353	3009
Kiri Industries	721.5	17.64	910201	29892	2945
V-Mart Retail	715.05	0.17	104136	3571	2816
Havells India	1425.15	0.86	304408	11045	2656
Colgate	2075	1.06	357921	13918	2472
Ceigall India	268.75	0.35	1757845	70392	2397
CIEINDIA	417	6.98	174168	7829	2125
DCM Shriram Ind	59	-1.75	119134	5832	1943

Price Shockers - NSE				
Company name	LCP	Prv Close	% Chg	Volume
Hind Aluminium	110.68	69.88	58.39	88968
Waa Solar	73.41	46.35	58.38	53600
Shree Metalloys	61.62	41.34	49.06	260551
Nagpur Power	159.86	117.62	35.91	86896
NRB Industrial	37.08	28.71	29.15	98176
Vanta Bioscienc	23.5	18.72	25.53	6000
Silver Touch Te	1097.6	880.95	24.59	64383
Medico Intercon	39.9	32.85	21.46	14941
KPIGREEN	505.4	416.65	21.3	5798484
PH CAPITAL	415.65	342.8	21.25	35192
Hind Motors	20.8	17.17	21.14	1699625
Madhuveer Com	273.95	227.7	20.31	46077
Apoorva Leasing	35.92	30.1	19.34	942
Kiri Industries	721.5	604.9	19.28	910201
Bright Outdoor	436	366.1	19.09	22875
Orient Bell	319.4	269	18.74	3036
Softtech Engine	373	315	18.41	207
Palco Metals	146.4	123.85	18.21	25895
Jupiter Infomed	41.2	34.87	18.15	42359
Shiva Granito E	12.89	11	17.18	0
Mukesh Babu Fin	139	118.95	16.86	2102



Nifty 50 stocks - Summary Details											
Symbol	LTP	Chng	% Chng	Volume (lacs)	Turnover (crs.)	52w High	Diff with 52w H	52w Low	Diff with 52w L	30 days % chng	365 days % chng
NIFTY 50	26129.60	190.75	0.74%	2463.15	20703.88	26325.80	0.75%	21743.65	20.17%	-1.01%	8.93%
ADANIENT	2239.00	24.30	1.10%	7.79	174.13	2616.50	14.43%	1967.52	13.80%	-2.87%	-8.10%
ADANIPTS	1469.70	8.50	0.58%	7.07	103.89	1549.00	5.12%	1010.75	45.41%	-3.67%	18.73%
APOLLOHOSP	7039.00	49.00	0.70%	2.26	158.74	8099.50	13.09%	6001.00	17.30%	-4.71%	-3.54%
ASIANPAINT	2770.20	11.90	0.43%	12.75	353.95	2985.70	7.22%	2124.75	30.38%	-4.04%	21.44%
AXISBANK	1268.70	22.70	1.82%	37.11	469.45	1304.00	2.71%	933.50	35.91%	-2.63%	15.64%
BAJAJ-AUTO	9350.00	68.00	0.73%	3.20	299.08	9490.00	1.48%	7089.35	31.89%	2.30%	3.96%
BAJAJFINSV	2038.00	11.60	0.57%	13.77	279.46	2195.00	7.15%	1560.00	30.64%	-3.23%	28.31%
BAJFINANCE	986.50	-2.80	-0.28%	98.95	973.86	1102.50	10.52%	679.20	45.24%	-4.65%	-85.68%
BEL	399.20	5.90	1.50%	94.10	375.38	436.00	8.44%	240.25	66.16%	-4.48%	34.67%
BHARTIARTL	2107.00	7.20	0.34%	29.91	629.83	2174.50	3.10%	1559.50	35.11%	-0.09%	31.25%
CIPLA	1508.10	15.60	1.05%	8.84	132.86	1673.00	9.86%	1335.00	12.97%	-2.53%	-0.94%
COALINDIA	399.45	1.45	0.36%	46.45	185.95	417.25	4.27%	349.25	14.37%	5.81%	4.60%
DRREDDY	1273.00	7.20	0.57%	6.58	83.55	1405.90	9.45%	1020.00	24.80%	0.56%	-8.90%
EICHERMOT	7314.00	121.50	1.69%	3.57	259.80	7374.50	0.82%	4646.00	57.43%	1.97%	47.48%
ETERNAL	278.05	0.95	0.34%	219.64	610.47	368.45	24.54%	194.80	42.74%	-7.66%	#VALUE!
GRASIM	2833.00	-8.70	-0.31%	3.28	93.10	2977.80	4.86%	2276.95	24.42%	3.73%	14.57%
HCLTECH	1620.10	4.90	0.30%	13.60	220.89	2012.20	19.49%	1302.75	24.36%	-0.55%	-14.63%
HDFCBANK	992.90	2.00	0.20%	109.63	1088.24	1020.50	2.70%	812.15	22.26%	-1.66%	-44.90%
HDFCLIFE	749.05	6.05	0.81%	25.04	187.55	820.75	8.74%	584.30	28.20%	-2.79%	19.47%
HINDALCO	886.00	1.85	0.21%	35.39	313.64	890.00	0.45%	546.45	62.14%	9.37%	43.21%
HINDUNILVR	2317.00	26.80	1.17%	13.24	306.47	2750.00	15.75%	2136.00	8.47%	-7.15%	-2.18%
ICICIBANK	1343.00	0.50	0.04%	61.51	826.87	1500.00	10.47%	1186.00	13.24%	-3.33%	2.67%
INDIGO	5060.00	42.00	0.84%	9.09	457.12	6232.50	18.81%	3945.00	28.26%	-14.97%	7.18%
INFY	1617.90	-3.70	-0.23%	65.39	1057.03	1982.80	18.40%	1307.00	23.79%	3.94%	-15.40%
ITC	402.70	2.10	0.52%	99.45	400.59	491.00	17.98%	390.15	3.22%	-0.90%	-16.30%
JIOFIN	295.00	2.50	0.85%	65.40	192.99	338.60	12.88%	198.65	48.50%	-4.47%	-4.08%
JSWSTEEL	1165.90	54.30	4.88%	58.82	682.80	1223.90	4.74%	880.00	32.49%	-4.20%	21.71%
KOTAKBANK	2203.00	50.30	2.34%	28.57	625.57	2301.90	4.30%	1723.75	27.80%	1.33%	22.32%
LT	4083.00	31.00	0.77%	11.60	472.87	4140.00	1.38%	2965.30	37.69%	-0.43%	12.30%
M&M	3716.00	55.70	1.52%	18.68	688.35	3795.00	2.08%	2425.00	53.24%	-2.58%	20.03%
MARUTI	16688.00	41.00	0.25%	3.14	524.55	16818.00	0.77%	10750.10	55.24%	4.70%	52.15%
MAXHEALTH	1045.10	4.30	0.41%	14.27	149.21	1314.30	20.48%	940.05	11.17%	-10.49%	-7.60%
NESTLEIND	1287.00	12.90	1.01%	7.39	95.03	1311.60	1.88%	1055.00	21.99%	1.03%	-41.17%
NTPC	329.90	5.00	1.54%	84.98	279.86	371.45	11.19%	292.80	12.67%	-0.47%	-3.01%
ONGC	240.46	5.78	2.46%	115.15	275.56	273.50	12.08%	205.00	17.30%	-3.52%	-0.94%
POWERGRID	264.20	3.85	1.48%	51.46	135.84	322.00	17.95%	247.30	6.83%	-3.56%	-15.85%
RELIANCE	1569.00	29.20	1.90%	57.72	904.36	1581.30	0.78%	1114.85	40.74%	-1.77%	26.10%
SBILIFE	2031.50	36.00	1.80%	7.51	152.29	2086.60	2.64%	1372.55	48.01%	1.50%	42.00%
SBIN	982.40	8.95	0.92%	58.08	570.30	999.00	1.66%	680.00	44.47%	-0.57%	21.73%
SHRIRAMFIN	996.80	17.40	1.78%	97.96	972.06	1000.20	0.34%	493.35	102.05%	15.00%	-66.21%
SUNPHARMA	1720.00	-0.20	-0.01%	14.28	245.72	1910.00	9.95%	1548.00	11.11%	-6.08%	-7.58%
TATACONSUM	1190.10	11.10	0.94%	9.61	114.16	1202.80	1.06%	893.10	33.25%	0.56%	29.85%
TMPV	367.40	5.65	1.56%	104.39	381.77	810.00	54.64%	337.70	8.79%	1.39%	#VALUE!
TATASTEEL	179.93	4.13	2.35%	508.97	916.61	186.94	3.75%	122.62	46.74%	4.67%	26.56%
TCS	3210.00	-36.80	-1.13%	33.63	1081.45	4322.95	25.75%	2866.60	11.98%	3.48%	-22.04%
TECHM	1591.00	-13.60	-0.85%	7.30	116.45	1773.60	10.30%	1209.40	31.55%	5.75%	-6.25%
TITAN	4048.00	73.90	1.86%	13.59	549.95	4061.90	0.34%	2925.00	38.39%	1.70%	20.09%
TRENT	4276.00	68.30	1.62%	4.26	181.91	7493.05	42.93%	3930.10	8.80%	-1.00%	-40.89%
ULTRACEMCO	11792.00	87.00	0.74%	1.72	202.47	13097.00	9.96%	10047.85	17.36%	0.91%	2.62%
WIPRO	264.00	0.35	0.13%	57.05	149.83	324.60	18.67%	228.00	15.79%	5.66%	-14.70%

## Disclaimer / Disclosures

### ANALYST CERTIFICATION

I, Mrs. Vaishali Parekh B.com, Research Analyst, author and the name subscribed to this report, hereby certify that all of the views expressed in this research report accurately reflect our views about the subject issuer(s) or securities. We also certify that no part of our compensation was, is, or will be directly or indirectly related to the specific recommendation(s) or view(s) in this report.

Terms & conditions and other disclosures:

Prabhudas Lilladher Pvt. Ltd, Mumbai, India (hereinafter referred to as "PL") is engaged in the business of Stock Broking, Portfolio Manager, Depository Participant and distribution for third party financial products. PL is a subsidiary of Prabhudas Lilladher Advisory Services Pvt Ltd. which has its various subsidiaries engaged in business of commodity broking, investment banking, financial services (margin funding) and distribution of third party financial/other products, details in respect of which are available at [www.plindia.com](http://www.plindia.com)

This document has been prepared by the Research Division of PL and is meant for use by the recipient only as information and is not for circulation. This document is not to be reported or copied or made available to others without prior permission of PL. It should not be considered or taken as an offer to sell or a solicitation to buy or sell any security.

The information contained in this report has been obtained from sources that are considered to be reliable. However, PL has not independently verified the accuracy or completeness of the same. Neither PL nor any of its affiliates, its directors or its employees accepts any responsibility of whatsoever nature for the information, statements and opinion given, made available or expressed herein or for any omission therein.

Recipients of this report should be aware that past performance is not necessarily a guide to future performance and value of investments can go down as well. The suitability or otherwise of any investments will depend upon the recipient's particular circumstances and, in case of doubt, advice should be sought from an independent expert/advisor.

Either PL or its affiliates or its directors or its employees or its representatives or its clients or their relatives may have position(s), make market, act as principal or engage in transactions of securities of companies referred to in this report and they may have used the research material prior to publication.

PL may from time to time solicit or perform investment banking or other services for any company mentioned in this document.

PL is registered as Research Analyst under Securities and Exchange Board of India (Research Analysts) Regulations, 2014 PL submits that no material disciplinary action has been taken on us by any Regulatory Authority impacting Equity Research Analysis activities.

PL or its research analysts or its associates or his relatives do not have any financial interest in the subject company.

PL or its research analysts or its associates or his relatives do not have actual/beneficial ownership of one per cent or more securities of the subject company at the end of the month immediately preceding the date of publication of the research report.

PL or its research analysts or its associates or his relatives do not have any material conflict of interest at the time of publication of the research report.

PL or its associates might have received compensation from the subject company in the past twelve months.

PL or its associates might have managed or co-managed public offering of securities for the subject company in the past twelve months or mandated by the subject company for any other assignment in the past twelve months.

PL or its associates might have received any compensation for investment banking or merchant banking or brokerage services from the subject company in the past twelve months.

PL or its associates might have received any compensation for products or services other than investment banking or merchant banking or brokerage services from the subject company in the past twelve months PL or its associates might have received any compensation or other benefits from the subject company or third party in connection with the research report.

PL encourages independence in research report preparation and strives to minimize conflict in preparation of research report. PL or its analysts did not receive any compensation or other benefits from the subject Company or third party in connection with the preparation of the research report. PL or its Research Analysts do not have any material conflict of interest at the time of publication of this report.

It is confirmed that Mrs. Vaishali Parekh B.com, Research Analyst of this report has not received any compensation from the companies mentioned in the report in the preceding twelve months compensation of our Research Analysts is not based on any specific merchant banking, investment banking or brokerage service transactions.

The Research analysts for this report certifies that all of the views expressed in this report accurately reflect his or her personal views about the subject company or companies and its or their securities, and no part of his or her compensation was, is or will be, directly or indirectly related to specific recommendations or views expressed in this report.

The research analysts for this report has not served as an officer, director or employee of the subject company PL or its research analysts have not engaged in market making activity for the subject company

Our sales people, traders, and other professionals or affiliates may provide oral or written market commentary or trading strategies to our clients that reflect opinions that are contrary to the opinions expressed herein, and our proprietary trading and investing businesses may make investment decisions that are inconsistent with the recommendations expressed herein. In reviewing these materials, you should be aware that any or all of the foregoing, among other things, may give rise to real or potential conflicts of interest.

PL and its associates, their directors and employees may (a) from time to time, have a long or short position in, and buy or sell the securities of the subject company or (b) be engaged in any other transaction involving such securities and earn brokerage or other compensation or act as a market maker in the financial instruments of the subject company or act as an advisor or lender/borrower to the subject company or may have any other potential conflict of interests with respect to any recommendation and other related information and opinions.

**Regd. Office:** 3<sup>rd</sup> Floor, Sadhana House, 570, P. B. Marg, Behind Mahindra Tower, Worli, Mumbai - 400 018, India.