

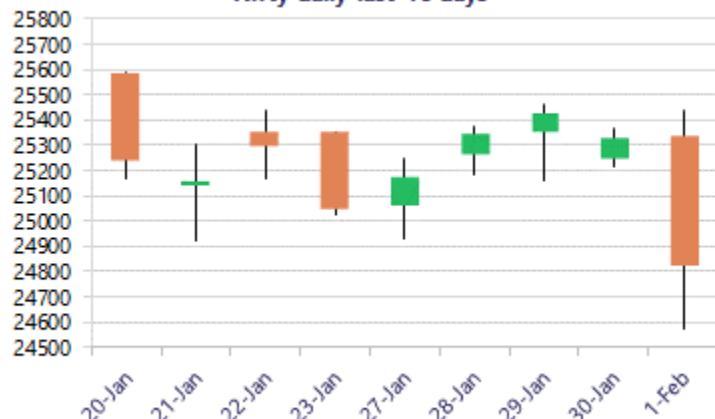
Date: 02nd February 2026

* Sensex 80722.94 - 1546.84

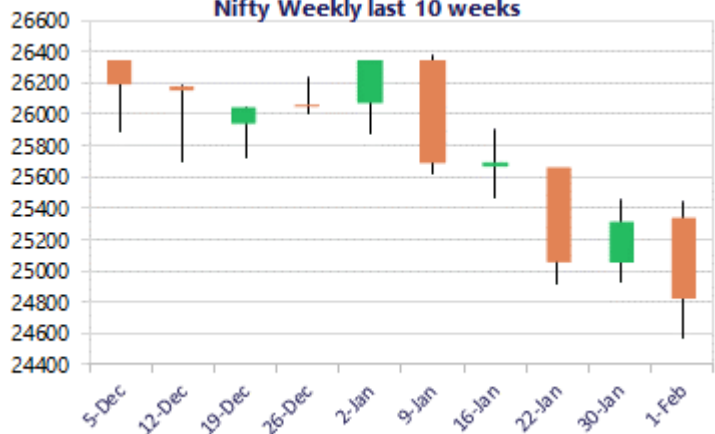
* Nifty 24825.45 - 495.20

* Bank Nifty 58417.20 - 1193.25

Nifty daily last 10 days



Nifty Weekly last 10 weeks



*Blue candle → Close rate > Open rate * Red candle → Close rate < Open rate

Market Preview

Nifty tanks below 25000 zone

Nifty witnessed mayhem post the Budget session announcement breaching below the important zone of 25000 level with bias and sentiment shattered. BankNifty plunged below the 58500 zone with heavy profit booking witnessed among the frontline Private and PSU Banking stocks with bias maintained with a very cautious approach. The market breadth was weak with the advance decline indicating a ratio of 1:2 at close.

Market Forecast

Nifty daily range 24600-25000

Nifty, witnessed a highly volatile session and post the Budget session announcement tanked heavily with profit booking seen to hit a low almost to touch the 24500 zone during the intraday session with sentiment shaken and bias turning weak. A big bearish candle indication breaching below the 200 period MA of 25200 zone has triggered for pessimism and maintaining with a very cautious approach for the index, has next major support near the 24400 zone. The index would need to close above the 25200 zone for the bias to improve and thereafter, establish conviction for further rise.

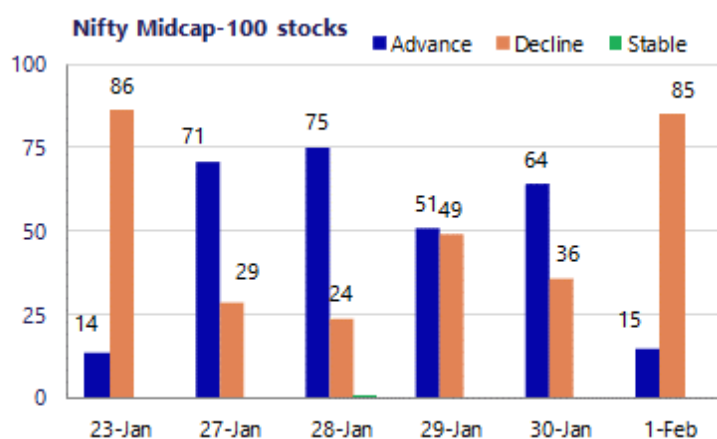
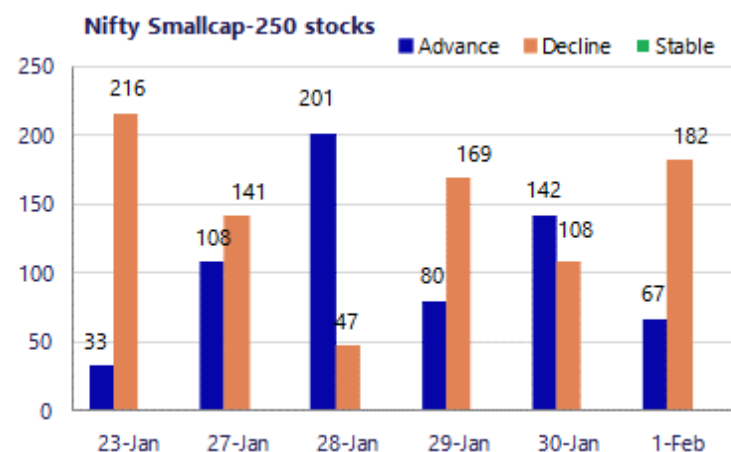
BankNifty plunged heavily with a huge red candle on the daily chart hitting the low near 57800 zone during the intraday session with bias weakening and breaching the important support levels as of now, with further slide anticipated in the coming sessions. As mentioned earlier, the index would have the important and crucial support positioned near the significant 200 period MA at 56800-zone which needs to be sustained failing which the overall trend would turn bearish.

The support for the day is seen at 24600 levels, while the resistance is seen at 25000 levels. BankNifty would have the daily range of 57600-59000 levels.

Sensex	Period	Closing	% Chng	Trend	Reversal	2 Sup	1 Sup	Pivot	1 Res	2 Res
Nifty	Daily	24825.45	-1.96%	-1	24981.15	24077	24451	24946	25320	25815
	Weekly	25320.65	1.09%	-4	25847.85	24714	25017	25236	25540	25759
	Monthly	25320.65	-3.10%	-1	25950.25	24084	24703	25538	26156	26991
Bank Nifty	Daily	58417.20	-2.00%	-1	59125.60	56606	57512	58689	59594	60771
	Weekly	59610.45	1.95%	-4	60432.00	57338	58474	59266	60403	61195
	Monthly	59610.45	0.05%	4	58708.15	57085	58348	59393	60655	61700
Sensex	Daily	80722.94	-1.88%	-1	81184.00	78289	79506	81116	82333	83944
	Weekly	82269.78	0.90%	-4	84040.75	80425	81347	82018	82940	83611
	Monthly	82269.78	-3.46%	-1	84767.90	78295	80283	83083	85070	87870

Gainers - Losers (Nifty 500 Stocks)

Gainers				Losers			
Company Name	Last Price	% Gain	Volume	Company Name	Last Price	% Loss	Volume
Anant Raj	531.05	5.30%	34741279	Hind Copper	599.25	-12.63%	88019915
Amber Enterpris	5,993.00	4.85%	561656	MCX India	2233.3	-11.66%	20996959
Action Const	887.3	4.45%	819668	Bharat Dynamics	1,384.10	-10.02%	6864587
Bharti Hexacom	1,597.80	3.43%	115935	IIFL Finance	475.75	-10.02%	3388437
Aster DM Health	570.40	3.31%	414711	Hind Zinc	570.10	-9.29%	45906603
AFFLE 3I	1,595.40	3.12%	769899	Angel One	2313	-8.97%	4203517
Caplin Labs	1,809.90	2.03%	33449	Muthoot Finance	3493.1	-8.79%	1394337



Nifty Daily chart with RSI indicator



BankNifty Daily chart with RSI indicator



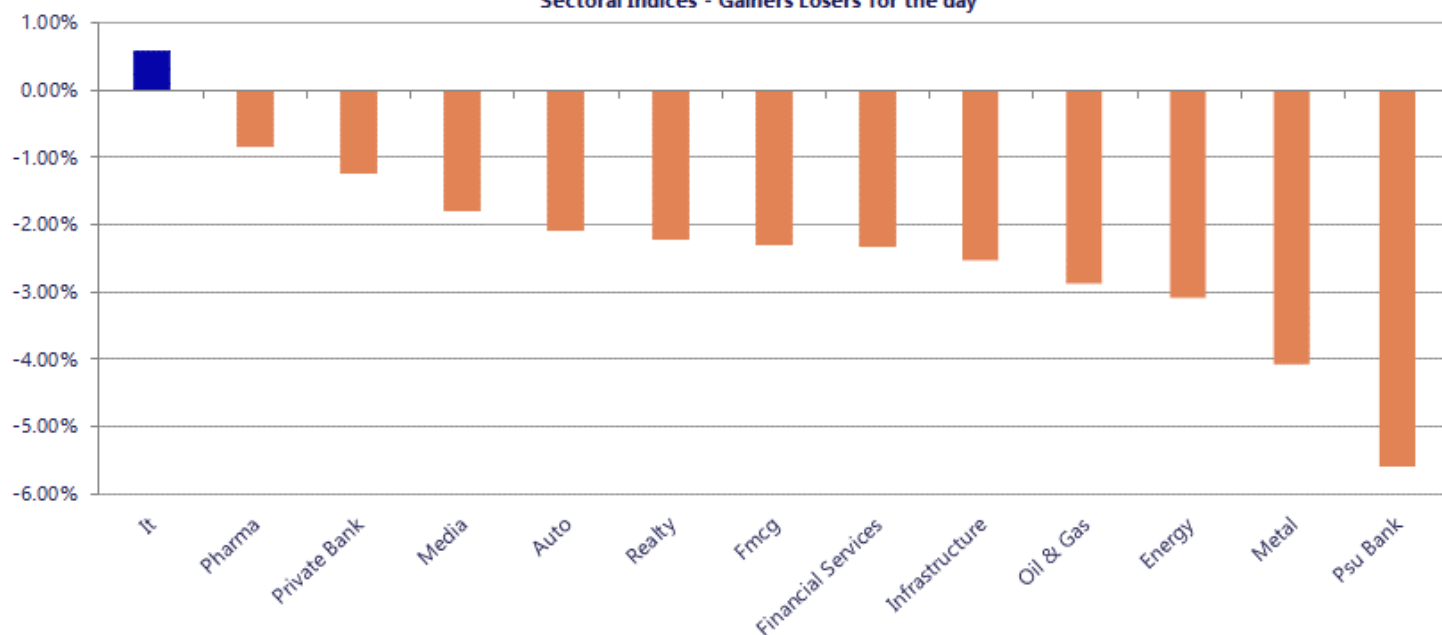
Breakouts - Cross above 200 DMA			
Company Name	LCP	Change %	200 DMA
Orient Tech	349.7	6.00	329.9
Gala Precision	841.95	3.91	810.24
Tarapur Trans	29.54	2.96	28.69
PTL Enterprises	41.39	2.60	40.34
Shigan Quantum	71.5	2.19	69.97
Bafna Pharma	116.9	1.56	115.1
Jay BharatMarut	85.77	1.55	84.46
Matrimony.com	523.95	1.10	518.27
Vardhman Text	452.2	0.79	448.67
Panache Digilif	294.3	0.74	292.15
HINDPETRO	431.45	0.57	429.01
Ramco System	479.95	0.42	477.92
AB Cotspin	427.15	0.28	425.95
HALEOSLABS	1239.4	0.28	1235.9
QMS Medical	90.5	0.21	90.31
Party	82	0.11	81.91
MID150	21.81	0.05	21.8

* Stocks crossing above its Simple Moving Average (200DMA)

Breakdown - Cross below 200 DMA			
Company Name	LCP	Change %	200 DMA
Antony Waste	515.9	-7.01	554.78
STEL Holdings	415.05	-6.28	442.87
Mishra Dhatu Ni	353	-5.71	374.38
UPL	664.95	-5.05	700.28
Adani Ports	1344.9	-4.57	1409.27
Avantel	146.76	-4.35	153.43
Modison	147.77	-4.15	154.17
Torrent Power	1297.5	-4.01	1351.68
Nandani Creatio	37.22	-3.80	38.69
Triveni Engg	358.6	-3.79	372.73
TATA Cons. Prod	1087.3	-3.69	1128.97
Arman Financial	1517.6	-3.52	1572.95
Groww Defence	76.95	-3.51	79.75
Edelweiss	102.21	-3.50	105.92
Krishana Phosch	467.95	-3.39	484.39
MO Defence	84.7	-3.28	87.57
Moschip Tech	194.17	-3.07	200.33
IIFL Finance	475.75	-2.99	490.39

* Stocks crossing below its Simple Moving Average (200DMA)

Sectoral Indices - Gainers Losers for the day



Stocks witnessing a volume surge as compared to their 5 day average

Watch out for the stocks that have seen a huge spurt in its share price over the last three days

Volume Shockers - NSE					
Company name	LCP	% Chg	Volume	Avg Vol *	% Chg
Mahindra Holida	292.4	-1.23	406048	7327	5442
Mayur Uniquoter	523	2.16	227566	4675	4768
Shilpa	283.25	-2.31	433962	12681	3322
Syrma SGS	767.55	0.85	447099	15973	2699
IKIO Tech	147	-1.87	380785	14089	2603
Delhivery	434.9	2.93	783574	32308	2325
Sun Pharma Adv	135.15	7.01	758470	34046	2128
Oceanic Foods	63	-5.83	40208	1863	2058
Anant Raj	529.95	5.07	4048138	191932	2009
Netweb	3317.8	5.49	266299	13602	1858
Switching Tech	81.1	1.9	29508	1836	1507
Allied Digital	143.2	15.53	113968	7786	1364
Blue Pearl Agri	63	3.99	39557	2849	1288
ZF Steering Gea	803.1	6.43	24011	1869	1185
Manaksia Steels	61.46	4.99	12523	1078	1061
Renaissance	104.25	-3.78	93070	8247	1028
Sonalis Consume	67.99	4.66	62000	5600	1007
MTAR	3063	4.44	148238	13418	1005
NEXOME CAPITAL	85	5.79	12755	1281	896
Max Healthcare	974.25	1.8	247190	24814	896
Welspun Special	40.78	10.31	4947246	512704	865

Price Shockers - NSE				
Company name	LCP	Prv Close	% Chg	Volume
Jai Hind Synth	58	39.76	45.88	2896
B2B Software	40.48	32.37	25.05	163166
Jupiter Infomed	41.45	33.2	24.85	8256
Ceeta Industrie	44	35.32	24.58	21860
SPEL Semiconduc	179.3	147.2	21.81	327249
Gala Precision	840.55	698.25	20.38	14955
Shiv Texchem	120.3	100.5	19.7	9600
Rainbow Foundat	46.59	39.04	19.34	9835
Panorama Studio	45.8	38.63	18.56	18907
KIC Metaliks	31.24	26.35	18.56	3848
Stratmont Indus	58.99	50	17.98	325
Biofil Chem	34.62	29.38	17.84	9317
Balu Forge Indu	416	356.05	16.84	86564
Colinz Labs	77.5	66.6	16.37	9343
Welspun Special	40.78	35.08	16.25	4947246
TeleCanor Glob	36.16	31.24	15.75	13577
Citi Port Fin	48.74	42.11	15.74	149
SJ Corporation	71.47	61.75	15.74	35
Modi Rubber	130.8	113.05	15.7	4715
Dhanashree Elec	182.4	157.65	15.7	31
Glittke Granite	30.29	26.18	15.7	732469

Nifty 50 stocks - Summary Details											
Symbol	LTP	Chng	% Chng	Volume (lacs)	Turnover (crs.)	52w High	Diff with 52w H	52w Low	Diff with 52w L	30 days % chng	365 days % chng
NIFTY 50	24825.45	-495.20	-1.96%	3793.40	25570.82	26373.20	5.87%	21743.65	14.17%	-2.38%	9.31%
ADANIENT	1937.80	-82.60	-4.09%	18.02	357.00	2616.50	25.94%	1848.00	4.86%	-8.77%	-12.86%
ADANIPTS	1347.90	-71.90	-5.06%	19.75	274.57	1549.00	12.98%	1010.75	33.36%	-2.83%	29.43%
APOLLOHOSP	6889.00	-71.50	-1.03%	2.55	177.87	8099.50	14.95%	6001.00	14.80%	-0.42%	2.60%
ASIANPAINT	2357.60	-70.70	-2.91%	8.01	191.16	2985.70	21.04%	2124.75	10.96%	-11.96%	9.23%
AXISBANK	1344.20	-26.20	-1.91%	30.22	409.54	1384.90	2.94%	974.80	37.89%	9.98%	39.35%
BAJAJ-AUTO	9500.00	-97.50	-1.02%	5.04	480.74	9888.00	3.92%	7089.35	34.00%	3.40%	11.26%
BAJAJFINSV	1904.00	-48.60	-2.49%	8.73	168.21	2195.00	13.26%	1617.00	17.75%	-3.64%	9.06%
BAJFINANCE	904.50	-25.35	-2.73%	38.30	347.84	1102.50	17.96%	778.44	16.19%	-6.01%	-88.02%
BEL	421.95	-27.05	-6.02%	1015.62	4429.64	461.65	8.60%	240.25	75.63%	14.16%	68.04%
BHARTIARTL	1934.00	-34.70	-1.76%	29.26	570.83	2174.50	11.06%	1559.50	24.01%	-6.24%	23.01%
CIPLA	1343.00	19.00	1.44%	11.18	147.85	1673.00	19.73%	1281.70	4.78%	-11.29%	-7.02%
COALINDIA	419.30	-21.45	-4.87%	61.97	265.11	461.55	9.15%	349.25	20.06%	10.74%	16.15%
DRREDDY	1191.80	-26.30	-2.16%	5.55	67.23	1379.70	13.62%	1020.00	16.84%	-3.77%	3.12%
EICHERMOT	6850.00	-272.50	-3.83%	2.98	207.49	7613.50	10.03%	4646.00	47.44%	-0.97%	37.42%
ETERNAL	268.50	-5.10	-1.86%	202.57	547.52	368.45	27.13%	194.80	37.83%	-1.26%	#VALUE!
GRASIM	2747.50	-71.50	-2.54%	1.90	52.75	2977.80	7.73%	2301.65	19.37%	-0.80%	14.89%
HCLTECH	1674.30	-21.30	-1.26%	18.46	309.01	1752.50	4.46%	1302.75	28.52%	4.98%	-1.36%
HDFCBANK	918.05	-11.20	-1.21%	98.56	915.79	1020.50	10.04%	830.55	10.54%	-6.22%	-44.60%
HDFCLIFE	714.65	-16.35	-2.24%	9.74	70.35	820.75	12.93%	595.25	20.06%	-1.62%	16.34%
HINDALCO	907.00	-55.60	-5.78%	87.40	796.76	1029.80	11.92%	546.45	65.98%	8.87%	64.80%
HINDUNILVR	2333.00	-40.00	-1.69%	7.80	183.58	2750.00	15.16%	2136.00	9.22%	3.62%	-0.46%
ICICIBANK	1334.00	-21.00	-1.55%	49.69	670.71	1500.00	11.07%	1200.10	11.16%	0.93%	8.26%
INDIGO	4591.00	-5.50	-0.12%	4.27	196.08	6232.50	26.34%	4157.85	10.42%	-8.40%	7.05%
INFY	1642.00	1.00	0.06%	62.41	1025.60	1924.00	14.66%	1307.00	25.63%	1.20%	-12.77%
ITC	308.15	-14.00	-4.35%	332.68	1046.64	471.50	34.64%	306.05	0.69%	-19.58%	-25.66%
JIOFIN	242.40	-12.10	-4.75%	138.91	343.67	338.60	28.41%	198.65	22.02%	-12.99%	6.80%
JSWSTEEL	1198.50	-15.90	-1.31%	8.64	103.70	1245.00	3.73%	905.20	32.40%	9.25%	29.52%
KOTAKBANK	407.85	-0.15	-0.04%	89.65	365.63	460.38	11.41%	374.32	8.96%	-81.05%	-78.75%
LT	3800.00	-132.30	-3.36%	26.55	1042.67	4195.00	9.42%	2965.30	28.15%	-2.95%	13.99%
M&M	3362.00	-69.80	-2.03%	16.09	552.70	3839.90	12.45%	2425.00	38.64%	-6.24%	17.35%
MARUTI	14185.00	-414.00	-2.84%	3.94	567.45	17370.00	18.34%	11059.45	28.26%	-12.30%	21.88%
MAXHEALTH	974.25	17.45	1.82%	40.00	392.23	1314.30	25.87%	940.00	3.64%	-8.07%	-6.65%
NESTLEIND	1271.00	-61.40	-4.61%	11.05	143.41	1339.60	5.12%	1055.00	20.47%	4.58%	-38.90%
NTPC	340.90	-15.10	-4.24%	139.76	488.66	371.45	8.22%	292.80	16.43%	9.57%	10.82%
ONGC	254.20	-14.80	-5.50%	171.78	453.40	277.77	8.49%	205.00	24.00%	14.61%	6.98%
POWERGRID	250.65	-5.85	-2.28%	99.55	253.58	322.00	22.16%	247.30	1.35%	-1.48%	-10.89%
RELIANCE	1342.80	-52.60	-3.77%	97.13	1337.57	1611.80	16.69%	1114.85	20.45%	-9.38%	12.94%
SBILIFE	1977.00	-21.50	-1.08%	8.06	159.29	2109.60	6.29%	1372.55	44.04%	0.15%	36.80%
SBIN	1020.00	-57.20	-5.31%	120.51	1250.76	1083.60	5.87%	680.00	50.00%	10.65%	42.02%
SHRIRAMFIN	994.00	-26.00	-2.55%	37.97	379.02	1029.30	3.43%	516.00	92.64%	4.15%	84.28%
SUNPHARMA	1609.00	13.70	0.86%	23.74	385.15	1851.20	13.08%	1548.00	3.94%	-7.26%	-8.07%
TATACONSUM	1085.00	-48.90	-4.31%	11.65	129.77	1220.90	11.13%	930.10	16.65%	-3.83%	18.05%
TMPV	343.20	-6.85	-1.96%	84.23	295.43	744.00	53.87%	335.60	2.26%	-3.23%	#VALUE!
TATASTEEL	185.90	-7.23	-3.74%	265.27	501.15	202.99	8.42%	125.30	48.36%	9.86%	47.65%
TCS	3178.20	54.30	1.74%	30.13	958.85	4150.00	23.42%	2866.60	10.87%	-3.79%	-23.80%
TECHM	1711.00	-32.10	-1.84%	6.54	113.74	1776.60	3.69%	1209.40	41.48%	8.63%	3.68%
TITAN	3944.00	-33.40	-0.84%	11.14	448.21	4312.10	8.54%	2925.00	34.84%	0.08%	18.00%
TRENT	3711.90	-73.60	-1.94%	6.11	228.86	6270.40	40.80%	3693.10	0.51%	-10.03%	-32.37%
ULTRACEMCO	12296.00	-398.00	-3.14%	2.03	254.40	13097.00	6.12%	10047.85	22.37%	8.45%	9.95%
WIPRO	241.93	5.03	2.12%	210.33	511.64	323.60	25.24%	228.00	6.11%	-10.15%	-24.18%

Disclaimer / Disclosures

ANALYST CERTIFICATION

I, Mrs. Vaishali Parekh B.com, Research Analyst, author and the name subscribed to this report, hereby certify that all of the views expressed in this research report accurately reflect our views about the subject issuer(s) or securities. We also certify that no part of our compensation was, is, or will be directly or indirectly related to the specific recommendation(s) or view(s) in this report.

Terms & conditions and other disclosures:

Prabhudas Lilladher Pvt. Ltd, Mumbai, India (hereinafter referred to as "PL") is engaged in the business of Stock Broking, Portfolio Manager, Depository Participant and distribution of third party financial products. PL is a subsidiary of Prabhudas Lilladher Advisory Services Pvt Ltd. which has its various subsidiaries engaged in business of commodity broking, investment banking, financial services (margin funding) and distribution of third party financial/other products, details in respect of which are available at www.plindia.com

This document has been prepared by the Research Division of PL and is meant for use by the recipient only as information and is not for circulation. This document is not to be reported or copied or made available to others without prior permission of PL. It should not be considered or taken as an offer to sell or a solicitation to buy or sell any security.

The information contained in this report has been obtained from sources that are considered to be reliable. However, PL has not independently verified the accuracy or completeness of the same. Neither PL nor any of its affiliates, its directors or its employees accepts any responsibility of whatsoever nature for the information, statements and opinion given, made available or expressed herein or for any omission therein.

Recipients of this report should be aware that past performance is not necessarily a guide to future performance and value of investments can go down as well. The suitability or otherwise of any investments will depend upon the recipient's particular circumstances and, in case of doubt, advice should be sought from an independent expert/advisor.

Either PL or its affiliates or its directors or its employees or its representatives or its clients or their relatives may have position(s), make market, act as principal or engage in transactions of securities of companies referred to in this report and they may have used the research material prior to publication.

PL may from time to time solicit or perform investment banking or other services for any company mentioned in this document.

PL is registered as Research Analyst under Securities and Exchange Board of India (Research Analysts) Regulations, 2014 PL submits that no material disciplinary action has been taken on us by any Regulatory Authority impacting Equity Research Analysis activities.

PL or its research analysts or its associates or his relatives do not have any financial interest in the subject company.

PL or its research analysts or its associates or his relatives do not have actual/beneficial ownership of one per cent or more securities of the subject company at the end of the month immediately preceding the date of publication of the research report.

PL or its research analysts or its associates or his relatives do not have any material conflict of interest at the time of publication of the research report.

PL or its associates might have received compensation from the subject company in the past twelve months.

PL or its associates might have managed or co-managed public offering of securities for the subject company in the past twelve months or mandated by the subject company for any other assignment in the past twelve months.

PL or its associates might have received any compensation for investment banking or merchant banking or brokerage services from the subject company in the past twelve months.

PL or its associates might have received any compensation for products or services other than investment banking or merchant banking or brokerage services from the subject company in the past twelve months PL or its associates might have received any compensation or other benefits from the subject company or third party in connection with the research report.

PL encourages independence in research report preparation and strives to minimize conflict in preparation of research report. PL or its analysts did not receive any compensation or other benefits from the subject Company or third party in connection with the preparation of the research report. PL or its Research Analysts do not have any material conflict of interest at the time of publication of this report.

It is confirmed that Mrs. Vaishali Parekh B.com, Research Analyst of this report has not received any compensation from the companies mentioned in the report in the preceding twelve months compensation of our Research Analysts is not based on any specific merchant banking, investment banking or brokerage service transactions.

The Research analysts for this report certifies that all of the views expressed in this report accurately reflect his or her personal views about the subject company or companies and its or their securities, and no part of his or her compensation was, is or will be, directly or indirectly related to specific recommendations or views expressed in this report.

The research analysts for this report has not served as an officer, director or employee of the subject company PL or its research analysts have not engaged in market making activity for the subject company

Our sales people, traders, and other professionals or affiliates may provide oral or written market commentary or trading strategies to our clients that reflect opinions that are contrary to the opinions expressed herein, and our proprietary trading and investing businesses may make investment decisions that are inconsistent with the recommendations expressed herein. In reviewing these materials, you should be aware that any or all of the foregoing, among other things, may give rise to real or potential conflicts of interest.

PL and its associates, their directors and employees may (a) from time to time, have a long or short position in, and buy or sell the securities of the subject company or (b) be engaged in any other transaction involving such securities and earn brokerage or other compensation or act as a market maker in the financial instruments of the subject company or act as an advisor or lender/borrower to the subject company or may have any other potential conflict of interests with respect to any recommendation and other related information and opinions.

Regd. Office: 3rd Floor, Sadhana House, 570, P. B. Marg, Behind Mahindra Tower, Worli, Mumbai - 400 018, India.