

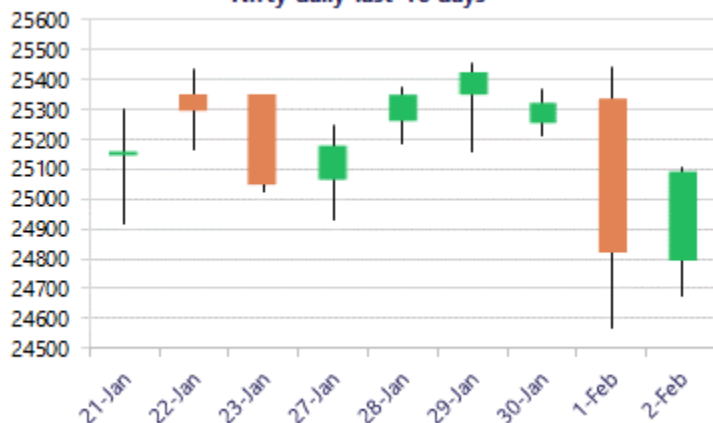
Date: 03rd February 2026

* Sensex 81666.46 + 943.52

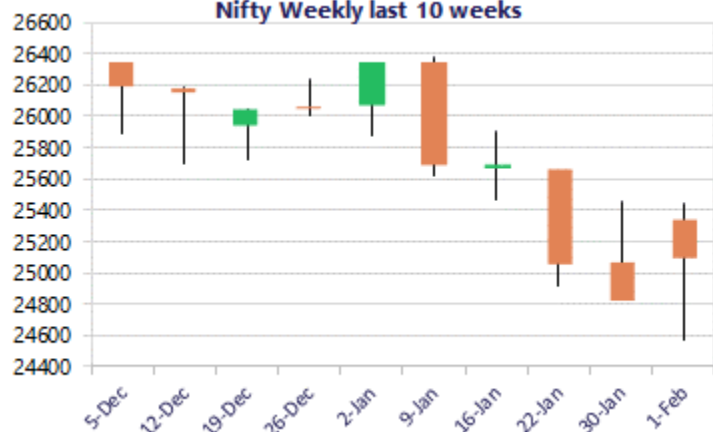
* Nifty 25088.40 + 262.95

* Bank Nifty 58619.00 + 201.80

Nifty daily last 10 days



Nifty Weekly last 10 weeks



*Blue candle → Close rate > Open rate * Red candle → Close rate < Open rate

Market Preview

Nifty recovers; ends above 25000 zone

Nifty witnessed a decent recovery from the low made near 24700 zone and closed above the 25000 level with buying interest visible at lower ends. BankNifty witnessed a bounce back to close in the green near the 58600 level with bias still maintained with a cautious approach. The market breadth was overall flat with the advance decline indicating a neutral ratio at close.

Market Forecast

Nifty daily range 24900-25300

Nifty, amid fluctuations and anxious moments witnessed a recovery during the second half of the session to close above the 25000 zone with bias and sentiment still maintained with a cautious approach as of now. The index would need to close above the 25400 zone to establish conviction and clarity, thereafter, to anticipate for further upward movement in the coming days. On the downside, the 24500 zone would be the important support zone which needs to be sustained to maintain the overall trend intact.

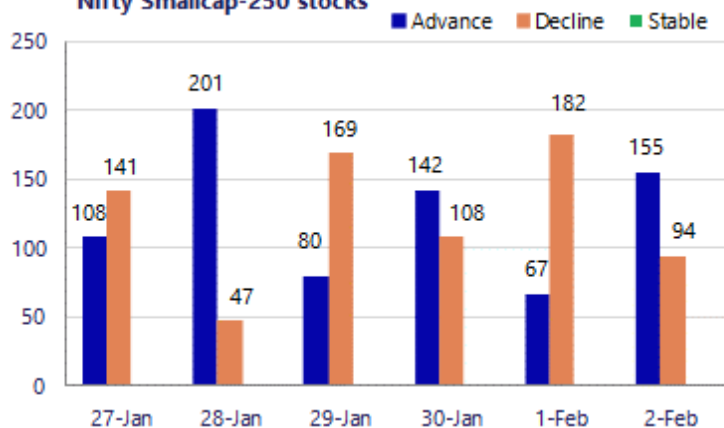
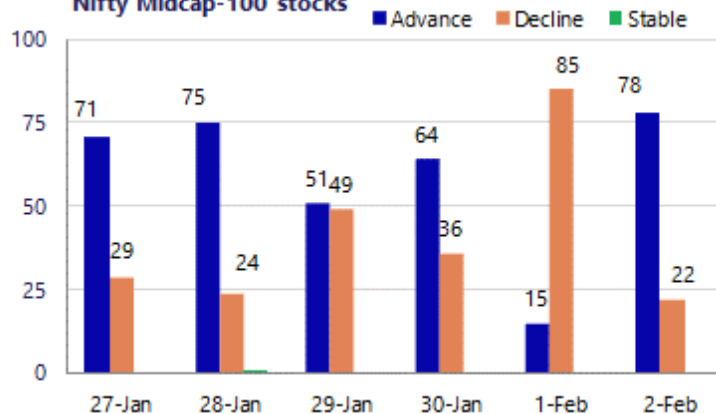
BankNifty witnessed a revival sustaining the support of the previous session's low at 57800 zone and ended in the green near 58600 level to bring some relief to ease out the sentiment to some extent. The index would need to move past the 50EMA zone at 59000 level in the coming sessions and on the downside, as mentioned earlier, would have the important and crucial support positioned near the significant 200 period MA at 56800-zone which needs to be sustained to maintain the overall trend intact.

The support for the day is seen at 24900 levels, while the resistance is seen at 25300 levels. BankNifty would have the daily range of 57800-59200 levels.

Sensex	Period	Closing	% Chng	Trend	Reversal	2 Sup	1 Sup	Pivot	1 Res	2 Res
Nifty	Daily	25088.40	1.06%	1	24953.20	24530	24809	24959	25238	25387
	Weekly	25320.65	1.09%	-4	25847.85	24714	25017	25236	25540	25759
	Monthly	25320.65	-3.10%	-1	25950.25	24084	24703	25538	26156	26991
Bank Nifty	Daily	58619.00	0.35%	-2	59034.80	57521	58070	58379	58927	59236
	Weekly	59610.45	1.95%	-4	60432.00	57338	58474	59266	60403	61195
	Monthly	59610.45	0.05%	4	58708.15	57085	58348	59393	60655	61700
Sensex	Daily	81666.46	1.17%	1	80976.60	79917	80792	81262	82137	82607
	Weekly	82269.78	0.90%	-4	84040.75	80425	81347	82018	82940	83611
	Monthly	82269.78	-3.46%	-1	84767.90	78295	80283	83083	85070	87870

Gainers - Losers (Nifty 500 Stocks)

Gainers				Losers			
Company Name	Last Price	% Gain	Volume	Company Name	Last Price	% Loss	Volume
Campus Active	272.3	6.72%	4356245	Bharat Dynamics	1,326.20	-4.18%	6255185
Anant Raj	558.20	5.11%	27810438	Chola Fin Hold	1645.6	-3.81%	455315
Bharat Forge	1443.7	4.80%	638148	Carborundum	754.40	-3.59%	479466
BSE Limited	2,701.60	4.79%	7052712	BLS Internation	254.20	-3.18%	1198734
Adani Green Ene	843.95	4.60%	3922415	Aditya Birla Re	1,195.40	-3.12%	342841
Adani Energy	884.60	4.59%	1529637	Cochin Shipyard	1512	-2.74%	1535093
Adani Ports	1,403.10	4.33%	2796570	C. E. Info Syst	1241.5	-2.71%	173876

Nifty Smallcap-250 stocks

Nifty Midcap-100 stocks


Nifty Daily chart with RSI indicator



BankNifty Daily chart with RSI indicator



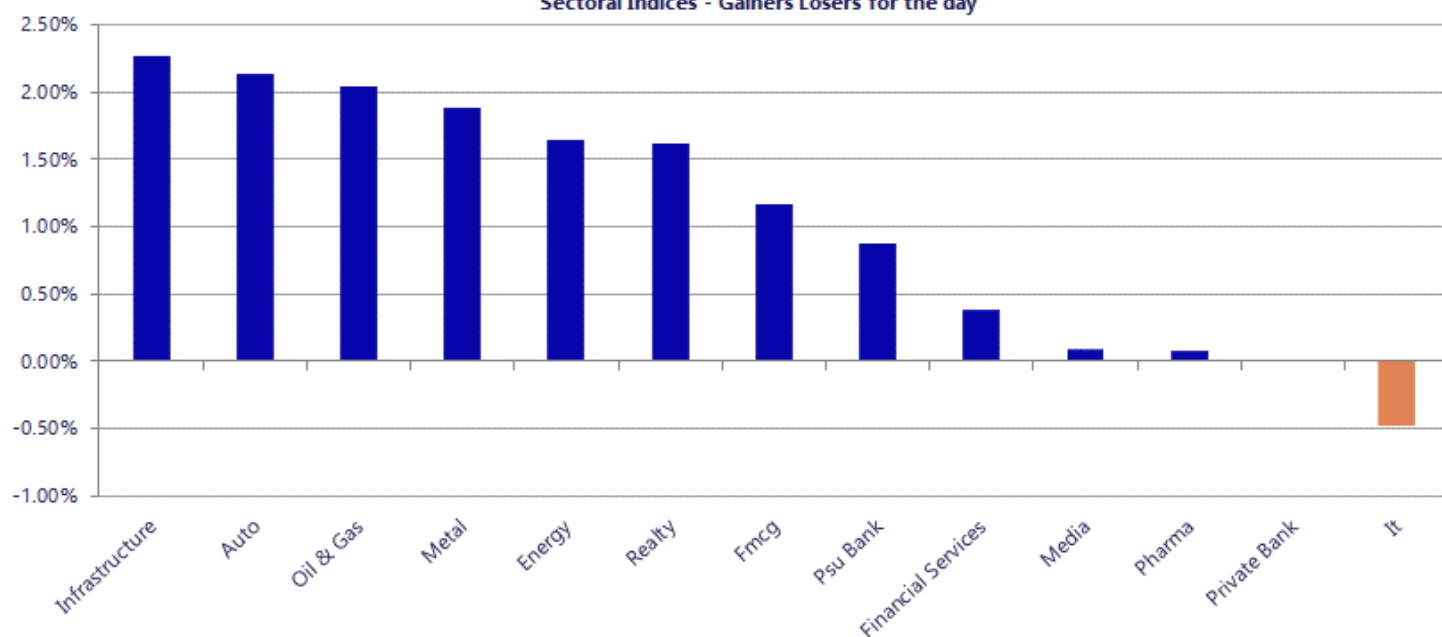
Breakouts - Cross above 200 DMA			
Company Name	LCP	Change %	200 DMA
Latent View	457.2	6.28	430.18
CenturyPlyboard	812.55	6.17	765.3
Consol Finvest	196.01	5.80	185.27
Manaksia Steels	64.12	3.94	61.69
Brace Port Logi	85.95	3.85	82.76
Manappuram Fin	279.4	2.95	271.4
M&M	3463.2	2.84	3367.67
RNFI Services	306.3	2.83	297.88
Tatva Chintan	1146.6	2.66	1116.92
Hitachi Energy	18978	2.25	18560.08
Walchandnagar	196.6	2.25	192.28
Ventive Hospita	757.05	2.23	740.56
MOCAPITAL	45.4	2.21	44.42
GMR Airports	94.01	2.04	92.13
Britannia	5888.5	1.86	5781.09
Shah Alloys	66.2	1.75	65.06
Polycab	7036.5	1.70	6918.94
NIFTY100EW	33.66	1.66	33.11

* Stocks crossing above its Simple Moving Average (200DMA)

Breakdown - Cross below 200 DMA			
Company Name	LCP	Change %	200 DMA
Party	76	-7.16	81.86
Agri-Tech	139.55	-3.71	144.92
AB Cotspin	412.55	-3.11	425.81
Prime Sec	265.75	-2.89	273.67
Northern Arc	241.6	-2.23	247.12
CARE Ratings	1571.2	-1.99	1603.02
Chamunda Electr	47	-1.78	47.85
McLeod	41.5	-1.45	42.11
Paisalo Digital	33.73	-1.32	34.18
Jubilant Agri	2087.9	-1.31	2115.54
Rajratan Global	399.05	-1.02	403.18
Strides Pharma	836.55	-0.87	843.89
Choice Internat	748.55	-0.64	753.4
V2 Retail	1989	-0.39	1996.85
NIFMID150	213.98	-0.35	214.73
QMS Medical	90	-0.35	90.32
Tata Nifty Ind	93.49	-0.28	93.75
Matrimony.com	517	-0.27	518.39

* Stocks crossing below its Simple Moving Average (200DMA)

Sectoral Indices - Gainers Losers for the day



Stocks witnessing a volume surge as compared to their 5 day average

Watch out for the stocks that have seen a huge spurt in its share price over the last three days

Volume Shockers - NSE					
Company name	LCP	% Chg	Volume	Avg Vol *	% Chg
Delhivery	443.1	1.56	3236407	32308	9917
D-Link India	419.55	3.75	311010	3513	8754
Atul Auto	425.55	7.86	254911	2918	8637
United Food	250.6	15.54	346916	4963	6889
Birla Corp	1047.3	2.54	65718	1412	4554
Latent View	456.45	9.16	1117186	31870	3405
Mangalam Drugs	36.2	4.99	93739	3501	2577
Craftsman	7512	1.12	24023	1098	2087
Dodla	1180	-1.44	50306	2545	1876
Biofil Chem	41.54	19.99	53645	2907	1745
Aegis Logistics	702	0.36	1317482	73001	1705
Netweb	3200	-3.19	206253	13602	1416
Venkys	1514.5	0.16	17859	1210	1376
Tega Industries	1696.5	0.58	29261	2176	1245
Patel Retail	195.8	-0.31	55995	4573	1125
Modern Eng	31.25	-2.68	20273	1793	1031
WPIL	397.75	8.97	362162	33786	972
Five-Star Busin	440	-3.16	164811	16611	892
Syrma SGS	776.5	0.97	156770	15973	881
Saksoft	170	-2.83	83587	8565	876
Assoc Alcohol	884.7	6.67	14805	1520	874

Price Shockers - NSE				
Company name	LCP	Prv Close	% Chg	Volume
Biofil Chem	41.54	28.85	43.99	53645
Alfa Transforme	39.32	29.89	31.55	72417
Standard Batter	50.95	41.25	23.52	9792
B2B Software	42	34.15	22.99	150490
Rainbow Foundat	51.24	42.36	20.96	58373
Captain Technoc	191	160	19.38	750
RNIT AI Solu	49.43	41.94	17.86	426632
Zelio E-Mobilit	285	243.7	16.95	356000
Jupiter Infomed	44.01	37.69	16.77	54137
India Finsec	188	161.7	16.26	1604
Ceeta Industrie	42.95	37.02	16.02	4394
Gala Precision	823.4	715.55	15.07	3475
Mangalam Organ	471.1	410.95	14.64	1351
Steelcast	211.45	184.8	14.42	8829
AASTAFIN	37.3	32.67	14.17	15590
Aditya Consumer	40	35.17	13.73	0
Fundviser	279.5	249.25	12.14	12719
Simplex Casting	475	423.85	12.07	19937
Margo Finance	66.35	59.5	11.51	1870
Anant Raj	559.8	504.4	10.98	3656386
First Custodian	79	71.31	10.78	459

Nifty 50 stocks - Summary Details											
Symbol	LTP	Chng	% Chng	Volume (lacs)	Turnover (crs.)	52w High	Diff with 52w H	52w Low	Diff with 52w L	30 days % chng	365 days % chng
NIFTY 50	25088.40	262.95	1.06%	4492.10	34037.57	26373.20	4.87%	21743.65	15.38%	-5.05%	5.60%
ADANIENT	1995.00	52.20	2.69%	12.29	241.86	2616.50	23.75%	1848.00	7.95%	-10.60%	-11.69%
ADANIPTS	1402.50	57.60	4.28%	27.97	385.77	1549.00	9.46%	1036.50	35.31%	-4.14%	29.15%
APOLLOHOSP	6922.50	-25.50	-0.37%	3.44	236.93	8099.50	14.53%	6001.00	15.36%	-2.12%	2.20%
ASIANPAINT	2395.00	38.00	1.61%	11.83	284.42	2985.70	19.78%	2124.75	12.72%	-11.76%	5.54%
AXISBANK	1309.20	-31.20	-2.33%	86.47	1138.97	1384.90	5.47%	978.05	33.86%	7.53%	38.97%
BAJAJ-AUTO	9474.00	-25.50	-0.27%	3.27	307.04	9888.00	4.19%	7089.35	33.64%	0.41%	8.47%
BAJAJFINSV	1934.00	25.20	1.32%	11.83	226.44	2195.00	11.89%	1617.00	19.60%	-4.14%	12.47%
BAJFINANCE	908.00	5.65	0.63%	118.75	1067.09	1102.50	17.64%	778.44	16.64%	-4.44%	-88.21%
BEL	440.80	15.45	3.63%	436.53	1881.95	461.65	4.52%	240.25	83.48%	12.90%	53.43%
BHARTIARTL	1966.40	17.40	0.89%	53.26	1040.66	2174.50	9.57%	1559.50	26.09%	-6.71%	21.05%
CIPLA	1314.50	-14.40	-1.08%	18.33	239.01	1673.00	21.43%	1281.70	2.56%	-11.79%	-10.50%
COALINDIA	421.35	1.80	0.43%	96.18	402.31	461.55	8.71%	349.25	20.64%	10.06%	11.33%
DRREDDY	1182.80	4.10	0.35%	12.08	142.70	1379.70	14.27%	1020.00	15.96%	-2.82%	0.06%
EICHERMOT	6982.00	92.50	1.34%	4.91	338.66	7613.50	8.29%	4646.00	50.28%	-3.07%	37.12%
ETERNAL	273.00	3.45	1.28%	342.08	929.31	368.45	25.91%	194.80	40.14%	-3.59%	#VALUE!
GRASIM	2773.60	36.00	1.32%	9.30	255.57	2977.80	6.86%	2301.65	20.50%	-1.15%	12.36%
HCLTECH	1675.00	8.80	0.53%	19.16	320.97	1752.50	4.42%	1302.75	28.57%	3.74%	-1.73%
HDFCBANK	928.10	6.00	0.65%	280.32	2590.53	1020.50	9.05%	830.55	11.75%	-6.25%	-45.30%
HDFCLIFE	717.00	1.70	0.24%	18.24	130.57	820.75	12.64%	595.25	20.45%	-2.55%	14.57%
HINDALCO	936.10	27.90	3.07%	96.60	884.28	1029.80	9.10%	546.45	71.31%	7.56%	61.97%
HINDUNILVR	2351.00	0.30	0.01%	13.75	321.46	2750.00	14.51%	2136.00	10.07%	2.15%	-3.88%
ICICIBANK	1351.00	16.80	1.26%	128.00	1722.17	1500.00	9.93%	1200.10	12.57%	1.27%	8.16%
INDIGO	4690.00	100.50	2.19%	13.09	608.87	6232.50	24.75%	4157.85	12.80%	-10.06%	6.29%
INFY	1627.00	-27.50	-1.66%	67.85	1106.85	1924.00	15.44%	1307.00	24.48%	0.69%	-12.70%
ITC	314.55	5.10	1.65%	352.27	1086.99	471.50	33.29%	302.00	4.16%	-11.46%	-28.01%
JIOFIN	245.15	2.85	1.18%	172.49	415.95	338.60	27.60%	198.65	23.41%	-13.93%	5.32%
JSWSTEEL	1198.10	6.60	0.55%	18.39	219.10	1245.00	3.77%	905.20	32.36%	3.66%	28.51%
KOTAKBANK	407.80	0.55	0.14%	154.22	629.22	460.38	11.42%	374.32	8.94%	-81.60%	-78.54%
LT	3914.00	100.00	2.62%	30.35	1185.51	4195.00	6.70%	2965.30	31.99%	-5.03%	10.23%
M&M	3455.00	91.20	2.71%	29.51	1006.96	3839.90	10.02%	2425.00	42.47%	-8.75%	14.78%
MARUTI	14378.00	179.00	1.26%	6.22	884.73	17370.00	17.23%	11059.45	30.01%	-12.62%	18.59%
MAXHEALTH	958.95	-17.75	-1.82%	29.27	278.21	1314.30	27.04%	933.80	2.69%	-8.82%	-9.84%
NESTLEIND	1306.30	23.80	1.86%	12.55	163.01	1339.60	2.49%	1055.00	23.82%	2.89%	-42.40%
NTPC	352.40	7.65	2.22%	126.23	436.86	371.45	5.13%	292.80	20.36%	5.86%	9.88%
ONGC	254.25	-0.05	-0.02%	170.16	429.04	277.77	8.47%	205.00	24.02%	13.04%	2.42%
POWERGRID	270.00	18.65	7.42%	371.09	983.09	322.00	16.15%	247.30	9.18%	-3.86%	-14.97%
RELIANCE	1388.00	41.00	3.04%	157.11	2157.50	1611.80	13.89%	1114.85	24.50%	-11.44%	10.30%
SBILIFE	2002.80	28.50	1.44%	13.38	266.15	2109.60	5.06%	1372.55	45.92%	-2.05%	34.71%
SBIN	1026.50	8.30	0.82%	144.34	1461.44	1083.60	5.27%	680.00	50.96%	9.38%	39.36%
SHRIRAMFIN	966.00	-31.60	-3.17%	135.67	1297.03	1029.30	6.15%	516.00	87.21%	0.03%	87.59%
SUNPHARMA	1628.90	18.80	1.17%	27.21	440.16	1851.20	12.01%	1548.00	5.23%	-7.31%	-8.52%
TATACONSUM	1121.10	33.80	3.11%	17.77	198.14	1220.90	8.17%	930.10	20.54%	-3.65%	10.66%
TMPV	364.00	19.35	5.61%	196.54	701.06	744.00	51.08%	335.60	8.46%	-4.76%	#VALUE!
TATASTEEL	188.72	3.34	1.80%	256.01	474.77	202.99	7.03%	125.30	50.61%	6.18%	43.46%
TCS	3167.00	-19.90	-0.62%	26.36	834.27	4150.00	23.69%	2866.60	10.48%	-3.21%	-24.04%
TECHM	1723.80	6.50	0.38%	10.31	177.34	1776.60	2.97%	1209.40	42.53%	8.42%	4.10%
TITAN	3961.80	-23.50	-0.59%	12.73	500.97	4312.10	8.12%	2925.00	35.45%	-1.78%	13.96%
TRENT	3717.00	-12.00	-0.32%	10.47	385.29	6270.40	40.72%	3645.00	1.98%	-11.91%	-34.20%
ULTRACEMCO	12543.00	259.00	2.11%	2.60	322.32	13097.00	4.23%	10047.85	24.83%	6.66%	10.50%
WIPRO	242.50	0.70	0.29%	123.35	298.04	323.60	25.06%	228.00	6.36%	-11.39%	-24.05%

Disclaimer / Disclosures

ANALYST CERTIFICATION

I, Mrs. Vaishali Parekh B.com, Research Analyst, author and the name subscribed to this report, hereby certify that all of the views expressed in this research report accurately reflect our views about the subject issuer(s) or securities. We also certify that no part of our compensation was, is, or will be directly or indirectly related to the specific recommendation(s) or view(s) in this report.

Terms & conditions and other disclosures:

Prabhudas Lilladher Pvt. Ltd, Mumbai, India (hereinafter referred to as "PL") is engaged in the business of Stock Broking, Portfolio Manager, Depository Participant and distribution for third party financial products. PL is a subsidiary of Prabhudas Lilladher Advisory Services Pvt Ltd. which has its various subsidiaries engaged in business of commodity broking, investment banking, financial services (margin funding) and distribution of third party financial/other products, details in respect of which are available at www.plindia.com

This document has been prepared by the Research Division of PL and is meant for use by the recipient only as information and is not for circulation. This document is not to be reported or copied or made available to others without prior permission of PL. It should not be considered or taken as an offer to sell or a solicitation to buy or sell any security.

The information contained in this report has been obtained from sources that are considered to be reliable. However, PL has not independently verified the accuracy or completeness of the same. Neither PL nor any of its affiliates, its directors or its employees accepts any responsibility of whatsoever nature for the information, statements and opinion given, made available or expressed herein or for any omission therein.

Recipients of this report should be aware that past performance is not necessarily a guide to future performance and value of investments can go down as well. The suitability or otherwise of any investments will depend upon the recipient's particular circumstances and, in case of doubt, advice should be sought from an independent expert/advisor.

Either PL or its affiliates or its directors or its employees or its representatives or its clients or their relatives may have position(s), make market, act as principal or engage in transactions of securities of companies referred to in this report and they may have used the research material prior to publication.

PL may from time to time solicit or perform investment banking or other services for any company mentioned in this document.

PL is registered as Research Analyst under Securities and Exchange Board of India (Research Analysts) Regulations, 2014 PL submits that no material disciplinary action has been taken on us by any Regulatory Authority impacting Equity Research Analysis activities.

PL or its research analysts or its associates or his relatives do not have any financial interest in the subject company.

PL or its research analysts or its associates or his relatives do not have actual/beneficial ownership of one per cent or more securities of the subject company at the end of the month immediately preceding the date of publication of the research report.

PL or its research analysts or its associates or his relatives do not have any material conflict of interest at the time of publication of the research report.

PL or its associates might have received compensation from the subject company in the past twelve months.

PL or its associates might have managed or co-managed public offering of securities for the subject company in the past twelve months or mandated by the subject company for any other assignment in the past twelve months.

PL or its associates might have received any compensation for investment banking or merchant banking or brokerage services from the subject company in the past twelve months.

PL or its associates might have received any compensation for products or services other than investment banking or merchant banking or brokerage services from the subject company in the past twelve months PL or its associates might have received any compensation or other benefits from the subject company or third party in connection with the research report.

PL encourages independence in research report preparation and strives to minimize conflict in preparation of research report. PL or its analysts did not receive any compensation or other benefits from the subject Company or third party in connection with the preparation of the research report. PL or its Research Analysts do not have any material conflict of interest at the time of publication of this report.

It is confirmed that Mrs. Vaishali Parekh B.com, Research Analyst of this report has not received any compensation from the companies mentioned in the report in the preceding twelve months compensation of our Research Analysts is not based on any specific merchant banking, investment banking or brokerage service transactions.

The Research analysts for this report certifies that all of the views expressed in this report accurately reflect his or her personal views about the subject company or companies and its or their securities, and no part of his or her compensation was, is or will be, directly or indirectly related to specific recommendations or views expressed in this report.

The research analysts for this report has not served as an officer, director or employee of the subject company PL or its research analysts have not engaged in market making activity for the subject company

Our sales people, traders, and other professionals or affiliates may provide oral or written market commentary or trading strategies to our clients that reflect opinions that are contrary to the opinions expressed herein, and our proprietary trading and investing businesses may make investment decisions that are inconsistent with the recommendations expressed herein. In reviewing these materials, you should be aware that any or all of the foregoing, among other things, may give rise to real or potential conflicts of interest.

PL and its associates, their directors and employees may (a) from time to time, have a long or short position in, and buy or sell the securities of the subject company or (b) be engaged in any other transaction involving such securities and earn brokerage or other compensation or act as a market maker in the financial instruments of the subject company or act as an advisor or lender/borrower to the subject company or may have any other potential conflict of interests with respect to any recommendation and other related information and opinions.

Regd. Office: 3rd Floor, Sadhana House, 570, P. B. Marg, Behind Mahindra Tower, Worli, Mumbai - 400 018, India.