

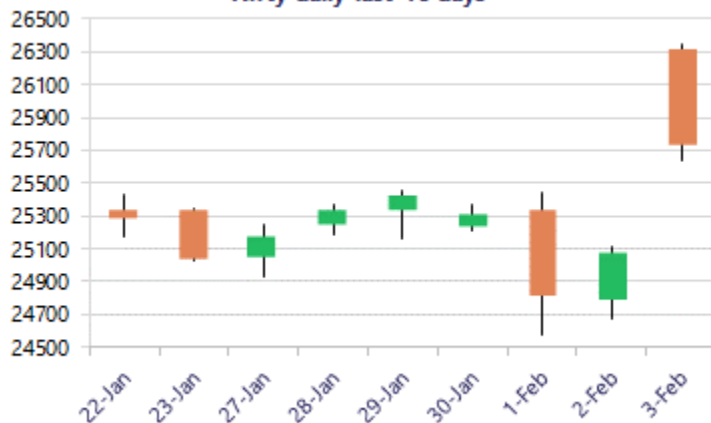
Date: 04th February 2026

* Sensex 83739.13 + 2072.67

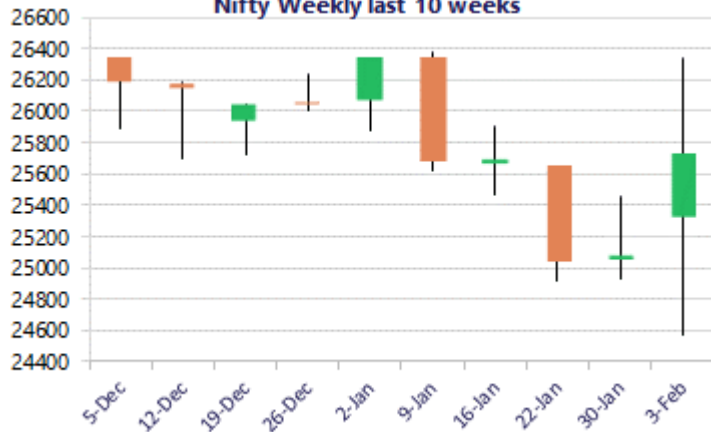
* Nifty 25727.55 + 639.15

* Bank Nifty 60041.30 + 1422.30

Nifty daily last 10 days



Nifty Weekly last 10 weeks



*Blue candle → Close rate > Open rate * Red candle → Close rate < Open rate

Market Preview

Nifty rockets; ends above 25700 zone

Nifty witnessed an extravaganza session on the back of successful outcome of the India-US Trade deal closing above the 25700 zone gaining more than 600 points to improve the bias and sentiment overall. BankNifty created history by hitting record all time high of 61764 level during the opening session to maintain an optimistic approach for the coming days. The market breadth ended on a strong note with the advance decline indicating a ratio of more than 5:1 at close.

Market Forecast

Nifty daily range 25500-26000

Nifty, witnessed an enormous gap up opening near the all-time high level of 26300 zone sparked by the finalisation of the India-US Trade deal but fizzled out to some extent to consolidated near the 25800 zone for rest part of the session with bias and sentiment improved significantly. The index would have the resistance band of 26300-26200 levels on the upside whereas on the downside the 25400 zone would be the important support zone which needs to be sustained for the overall trend to remain intact.

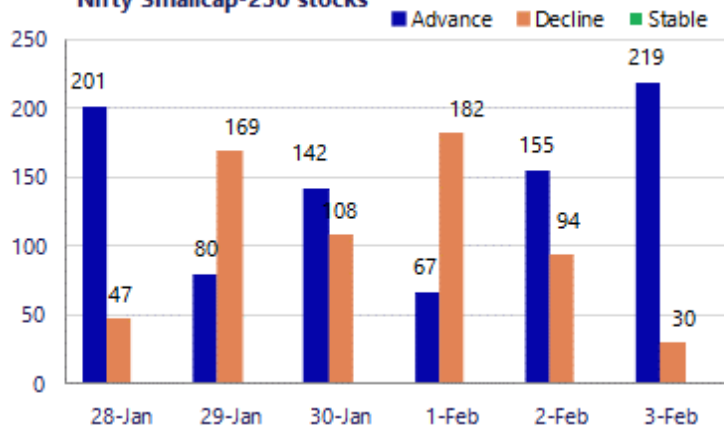
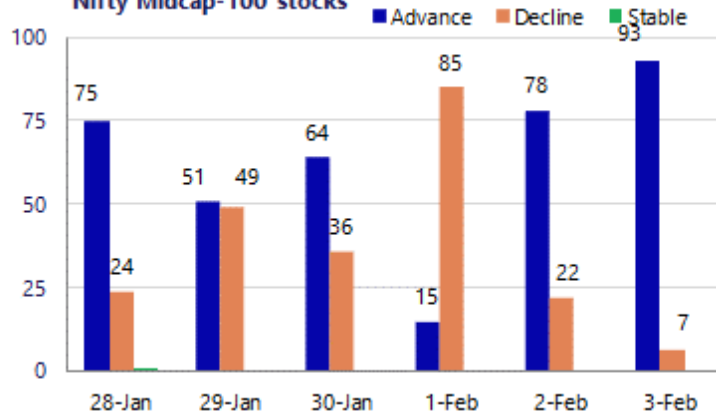
BankNifty opened with a huge gap up to hit record all time high of 61764 level to create history, thereafter, slipping down to consolidate near the 60100 zone for rest of the trading session. The overall sentiment has improved significantly with the index required to sustain above the 50EMA level of 59100 zone to maintain the bias intact. A decisive close above the 60400 zone shall establish conviction for further rise in the coming days provided the important and crucial support of 58000 zone is sustained as of now.

The support for the day is seen at 25500 levels, while the resistance is seen at 26000 levels. BankNifty would have the daily range of 59400-61000 levels.

Sensex	Period	Closing	% Chng	Trend	Reversal	2 Sup	1 Sup	Pivot	1 Res	2 Res
Nifty	Daily	25727.55	2.55%	2	24898.10	25203	25466	25903	26165	26603
	Weekly	25320.65	1.09%	-4	25847.85	24714	25017	25236	25540	25759
	Monthly	25320.65	-3.10%	-1	25950.25	24084	24703	25538	26156	26991
Bank Nifty	Daily	60041.30	2.43%	1	59340.85	58561	59301	60533	61273	62505
	Weekly	59610.45	1.95%	-4	60432.00	57338	58474	59266	60403	61195
	Monthly	59610.45	0.05%	4	58708.15	57085	58348	59393	60655	61700
Sensex	Daily	83739.13	2.54%	2	80686.10	82000	82870	84371	85240	86741
	Weekly	82269.78	0.90%	-4	84040.75	80425	81347	82018	82940	83611
	Monthly	82269.78	-3.46%	-1	84767.90	78295	80283	83083	85070	87870

Gainers - Losers (Nifty 500 Stocks)

Gainers				Losers			
Company Name	Last Price	% Gain	Volume	Company Name	Last Price	% Loss	Volume
Apar Ind	9759	19.56%	973535	Varun Beverages	451.10	-3.26%	28663798
Aarti Ind	429.70	15.20%	14488575	Rainbow Child	1114.5	-3.06%	326477
Balkrishna Ind	2571.9	12.12%	2320316	SignatureGlobal	876.00	-1.72%	709366
Adani Green Ene	932.10	10.44%	10825837	Sun TV Network	545.25	-0.87%	133373
Adani Enterpris	2,202.60	10.38%	6917882	Vishal Mega Mar	121.07	-0.65%	12369861
Adani Energy	974.40	10.15%	5084889	PTC Industries	17865	-0.64%	20552
Adani Ports	1,530.80	9.10%	11975850	Railtel	334.9	-0.56%	1606364

Nifty Smallcap-250 stocks

Nifty Midcap-100 stocks


Nifty Daily chart with RSI indicator



BankNifty Daily chart with RSI indicator



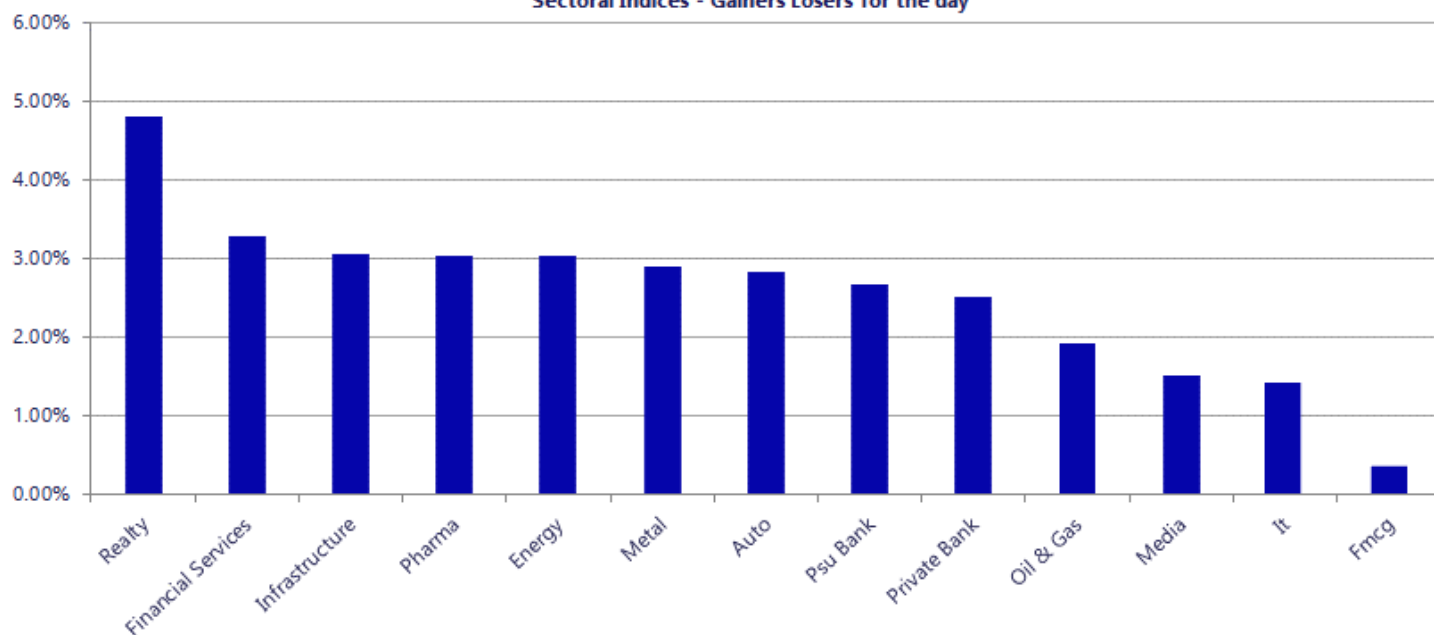
Breakouts - Cross above 200 DMA			
Company Name	LCP	Change %	200 DMA
Apar Ind	9759	19.31	8179.7
Welspun India	146.61	12.44	130.39
BlackBuck	624.75	11.90	558.32
Carysil	957.85	11.89	856.04
Avalon Technolo	1022.7	11.26	919.21
Navneet	162.3	9.63	148.05
Arvind	359.45	8.81	330.36
IZMO	686	8.77	630.68
Adani Ports	1530.8	8.48	1411.13
Adani Trans	974.4	8.12	901.23
Alldigi Tech	980.35	7.39	912.92
Good Luck	1147.5	6.79	1074.52
Rajratan Global	429.55	6.42	403.65
Timken	3251.6	6.33	3058.14
Durlax Top Surf	45.1	6.29	42.43
V2 Retail	2120.1	6.11	1998.07
Aarti Ind	429.7	5.72	406.46
Tilaknagar Ind	448.8	5.70	424.58

* Stocks crossing above its Simple Moving Average (200DMA)

Breakdown - Cross below 200 DMA			
Company Name	LCP	Change %	200 DMA
Shigan Quantum	67	-3.92	69.73
Walchandnagar	186.66	-2.97	192.38
Shah Alloys	64.13	-1.44	65.07
Zydus Wellness	418.9	-1.24	424.17
Garden Reach Sh	2546.1	-1.06	2573.36
D.K. Enterprise	72	-1.04	72.76
RNFI Services	296	-0.77	298.29
Avantel	152.72	-0.66	153.74
Vdeal System	172.9	-0.41	173.61
Metropolis	1904.3	-0.01	1904.56

* Stocks crossing below its Simple Moving Average (200DMA)

Sectoral Indices - Gainers Losers for the day



Stocks witnessing a volume surge as compared to their 5 day average

Watch out for the stocks that have seen a huge spurt in its share price over the last three days

Volume Shockers - NSE					
Company name	LCP	% Chg	Volume	Avg Vol *	% Chg
Brookfield Ind	350.71	-3.82	8030136	10005	80161
Reliance Infra	127.35	4.99	979539	3738	26105
Embassy Office	429.85	-1.49	1759775	8349	20977
Blue Pearl Agri	63.01	-3.79	1893546	9945	18941
WS Industries	80.19	3.54	91796	1045	8688
Himatsingka Sei	117.7	14.61	1103056	13950	7807
PB Fintech	1456.05	-6.8	3612671	48111	7409
PCBL Chemical	300	12.07	2658693	44511	5873
Vinati Organics	1561.15	4.5	104612	1998	5135
KPIL	1128.95	0.33	152783	3807	3913
PI Industries	3167.7	2.37	126680	3529	3490
Aarti Ind	428.8	14.91	1345159	42707	3050
Odyssey Tech	50.45	-12.47	109645	3657	2898
CRISIL	4833.05	0.35	73318	2455	2886
Triveni Turbine	549.5	8.77	644219	22128	2811
Maxgrow India	63.39	4.99	28969	1093	2550
Welspun India	146.95	19.81	3116880	129876	2300
Shivalik Bimeta	489	16.68	25711	1123	2189
Navneet	161	15.66	114338	5415	2012
GNA Axles	416.95	17.52	55983	2777	1916
Rainbow Childre	1115.3	-2.96	129781	6695	1839

Price Shockers - NSE				
Company name	LCP	Prv Close	% Chg	Volume
Biofil Chem	45.69	28.85	58.37	4214
Alfa Transforme	41.2	29.89	37.84	91724
Steelcast	247.65	184.8	34.01	28470
Standard Batter	53.65	41.25	30.06	7025
B2B Software	44.4	34.15	30.01	157702
Ceeta Industrie	47.99	37.02	29.63	10140
Garware HiTech	3905.2	3014.7	29.54	2439
Rainbow Foundat	53.8	42.36	27.01	36378
Gokaldas Export	696.1	550.6	26.43	82035
RNIT AI Solu	52.1	41.94	24.23	233267
Nelcast	109.05	88.3	23.5	17029
Waterbase	49.22	40.08	22.8	195780
Apar Ind	9787.7	7997.8	22.38	63430
Zelio E-Mobilit	297	243.7	21.87	186000
Carysil	964.65	791.85	21.82	20271
Indo Count	286.9	236.05	21.54	95764
Avanti Feeds	960.8	796.65	20.61	630990
Apex Frozen	351.1	291.55	20.43	231734
Magna Electro	889.7	742.6	19.81	17003
Chatterbox Tech	70	58.51	19.64	51600
Captain Technoc	191	160	19.38	0

Nifty 50 stocks - Summary Details											
Symbol	LTP	Chng	% Chng	Volume (lacs)	Turnover (crs.)	52w High	Diff with 52w H	52w Low	Diff with 52w L	30 days % chng	365 days % chng
NIFTY 50	25727.55	639.15	2.55%	6371.93	52333.49	26373.20	2.45%	21743.65	18.32%	-4.71%	6.84%
ADANIENT	2206.50	211.10	10.58%	69.18	1523.30	2616.50	15.67%	1848.00	19.40%	-12.47%	-12.10%
ADANIPTS	1532.00	128.90	9.19%	119.76	1812.75	1549.00	1.10%	1036.50	47.81%	-5.80%	29.43%
APOLLOHOSP	7065.00	131.50	1.90%	4.38	310.60	8099.50	12.77%	6001.00	17.73%	-2.75%	1.35%
ASIANPAINT	2424.10	22.10	0.92%	22.34	542.31	2985.70	18.81%	2124.75	14.09%	-13.37%	2.16%
AXISBANK	1354.40	42.90	3.27%	103.84	1410.71	1418.30	4.51%	978.05	38.48%	3.52%	31.39%
BAJAJ-AUTO	9610.00	113.50	1.20%	5.73	553.68	9941.00	3.33%	7089.35	35.56%	-0.06%	3.72%
BAJAJFINSV	2011.10	81.00	4.20%	13.59	273.89	2195.00	8.38%	1727.25	16.43%	-5.31%	10.04%
BAJFINANCE	964.00	60.30	6.67%	152.61	1463.32	1102.50	12.56%	792.11	21.70%	-8.76%	-88.70%
BEL	438.40	-0.70	-0.16%	266.86	1179.94	461.65	5.04%	240.25	82.48%	8.92%	55.82%
BHARTIARTL	1995.00	29.60	1.51%	69.15	1382.02	2174.50	8.25%	1559.50	27.93%	-6.69%	21.08%
CIPLA	1323.40	11.80	0.90%	27.11	360.57	1673.00	20.90%	1281.70	3.25%	-13.23%	-8.89%
COALINDIA	430.50	7.00	1.65%	139.54	593.69	461.55	6.73%	349.25	23.26%	-1.03%	9.91%
DRREDDY	1228.90	46.40	3.92%	15.21	187.67	1379.70	10.93%	1020.00	20.48%	-5.86%	-1.86%
EICHERMOT	7205.00	219.50	3.14%	6.90	495.49	7613.50	5.37%	4646.00	55.08%	-4.76%	29.60%
ETERNAL	278.50	5.85	2.15%	753.08	2153.95	368.45	24.41%	194.80	42.97%	-4.05%	#VALUE!
GRASIM	2808.10	33.50	1.21%	12.33	348.17	2977.80	5.70%	2301.65	22.00%	-2.86%	13.68%
HCLTECH	1692.20	15.40	0.92%	32.01	548.18	1780.10	4.94%	1302.75	29.89%	2.23%	-1.02%
HDFCBANK	947.65	19.55	2.11%	503.35	4804.18	1020.50	7.14%	830.55	14.10%	-7.34%	-45.11%
HDFCLIFE	720.00	2.50	0.35%	39.11	283.81	820.75	12.28%	600.35	19.93%	-4.95%	14.71%
HINDALCO	954.40	23.90	2.57%	100.99	967.77	1029.80	7.32%	546.45	74.65%	0.52%	58.67%
HINDUNILVR	2369.50	12.20	0.52%	15.53	368.04	2750.00	13.84%	2136.00	10.93%	0.40%	-5.94%
ICICIBANK	1388.00	35.20	2.60%	248.96	3464.91	1500.00	7.47%	1200.10	15.66%	-0.19%	7.75%
INDIGO	4948.00	261.00	5.57%	29.15	1432.68	6232.50	20.61%	4157.85	19.00%	-8.21%	4.33%
INFY	1654.70	25.30	1.55%	88.05	1473.74	1924.00	14.00%	1307.00	26.60%	-0.67%	-11.99%
ITC	316.95	2.25	0.71%	331.63	1047.51	465.20	31.87%	302.00	4.95%	-10.10%	-31.96%
JIOFIN	264.00	19.90	8.15%	402.18	1056.36	338.60	22.03%	198.65	32.90%	-19.09%	1.07%
JSWSTEEL	1230.70	31.50	2.63%	20.93	257.84	1245.00	1.15%	905.20	35.96%	1.57%	28.36%
KOTAKBANK	415.80	7.60	1.86%	353.96	1480.21	460.38	9.68%	375.44	10.75%	-81.40%	-78.55%
LT	4038.00	116.70	2.98%	37.42	1519.70	4195.00	3.74%	2965.30	36.18%	-5.81%	13.74%
M&M	3530.00	66.80	1.93%	54.92	1954.90	3839.90	8.07%	2425.00	45.57%	-8.92%	12.56%
MARUTI	14768.00	384.00	2.67%	6.39	944.73	17370.00	14.98%	11059.45	33.53%	-15.19%	11.36%
MAXHEALTH	1006.05	47.95	5.00%	45.28	451.52	1314.30	23.45%	933.80	7.74%	-9.83%	-13.55%
NESTLEIND	1307.40	-0.90	-0.07%	12.32	161.13	1340.40	2.46%	1055.00	23.92%	2.23%	-43.78%
NTPC	358.10	7.75	2.21%	115.55	413.34	371.45	3.59%	292.80	22.30%	-0.50%	10.28%
ONGC	256.75	2.80	1.10%	192.12	487.79	277.77	7.57%	205.00	25.24%	5.17%	-1.40%
POWERGRID	283.05	12.65	4.68%	526.47	1477.60	322.00	12.10%	247.30	14.46%	-0.20%	-6.71%
RELIANCE	1438.00	47.60	3.42%	254.55	3680.01	1611.80	10.78%	1114.85	28.99%	-12.68%	9.95%
SBILIFE	1999.40	-1.60	-0.08%	19.15	388.14	2109.60	5.22%	1379.85	44.90%	-3.21%	37.59%
SBIN	1062.10	33.40	3.25%	161.28	1710.91	1089.80	2.54%	680.00	56.19%	2.98%	34.30%
SHRIRAMFIN	1000.00	37.90	3.94%	98.80	997.05	1041.50	3.98%	516.00	93.80%	-4.78%	80.91%
SUNPHARMA	1702.10	74.20	4.56%	85.20	1446.27	1851.20	8.05%	1548.00	9.95%	-5.79%	-6.56%
TATACONSUM	1155.40	30.00	2.67%	12.54	144.60	1220.90	5.36%	930.10	24.22%	-3.87%	5.19%
TMPV	372.50	9.60	2.65%	167.18	622.80	744.00	49.93%	335.60	11.00%	-2.01%	#VALUE!
TATASTEEL	193.22	4.71	2.50%	284.59	550.23	202.99	4.81%	125.30	54.21%	3.08%	41.77%
TCS	3220.00	50.40	1.59%	43.66	1410.72	4150.00	22.41%	2866.60	12.33%	-2.49%	-22.18%
TECHM	1712.70	-11.30	-0.66%	27.11	471.44	1854.00	7.62%	1209.40	41.62%	6.95%	4.71%
TITAN	4080.30	127.10	3.22%	10.43	425.43	4312.10	5.38%	2925.00	39.50%	-2.43%	11.30%
TRENT	3821.00	100.10	2.69%	7.44	284.07	6261.00	38.97%	3645.00	4.83%	-15.62%	-39.88%
ULTRACEMCO	12610.00	75.00	0.60%	2.97	376.50	13097.00	3.72%	10047.85	25.50%	5.34%	11.33%
WIPRO	242.56	0.26	0.11%	259.11	637.32	323.60	25.04%	228.00	6.39%	-9.93%	-20.51%

Disclaimer / Disclosures

ANALYST CERTIFICATION

I, Mrs. Vaishali Parekh B.com, Research Analyst, author and the name subscribed to this report, hereby certify that all of the views expressed in this research report accurately reflect our views about the subject issuer(s) or securities. We also certify that no part of our compensation was, is, or will be directly or indirectly related to the specific recommendation(s) or view(s) in this report.

Terms & conditions and other disclosures:

Prabhudas Lilladher Pvt. Ltd, Mumbai, India (hereinafter referred to as "PL") is engaged in the business of Stock Broking, Portfolio Manager, Depository Participant and distribution for third party financial products. PL is a subsidiary of Prabhudas Lilladher Advisory Services Pvt Ltd. which has its various subsidiaries engaged in business of commodity broking, investment banking, financial services (margin funding) and distribution of third party financial/other products, details in respect of which are available at www.plindia.com

This document has been prepared by the Research Division of PL and is meant for use by the recipient only as information and is not for circulation. This document is not to be reported or copied or made available to others without prior permission of PL. It should not be considered or taken as an offer to sell or a solicitation to buy or sell any security.

The information contained in this report has been obtained from sources that are considered to be reliable. However, PL has not independently verified the accuracy or completeness of the same. Neither PL nor any of its affiliates, its directors or its employees accepts any responsibility of whatsoever nature for the information, statements and opinion given, made available or expressed herein or for any omission therein.

Recipients of this report should be aware that past performance is not necessarily a guide to future performance and value of investments can go down as well. The suitability or otherwise of any investments will depend upon the recipient's particular circumstances and, in case of doubt, advice should be sought from an independent expert/advisor.

Either PL or its affiliates or its directors or its employees or its representatives or its clients or their relatives may have position(s), make market, act as principal or engage in transactions of securities of companies referred to in this report and they may have used the research material prior to publication.

PL may from time to time solicit or perform investment banking or other services for any company mentioned in this document.

PL is registered as Research Analyst under Securities and Exchange Board of India (Research Analysts) Regulations, 2014 PL submits that no material disciplinary action has been taken on us by any Regulatory Authority impacting Equity Research Analysis activities.

PL or its research analysts or its associates or his relatives do not have any financial interest in the subject company.

PL or its research analysts or its associates or his relatives do not have actual/beneficial ownership of one per cent or more securities of the subject company at the end of the month immediately preceding the date of publication of the research report.

PL or its research analysts or its associates or his relatives do not have any material conflict of interest at the time of publication of the research report.

PL or its associates might have received compensation from the subject company in the past twelve months.

PL or its associates might have managed or co-managed public offering of securities for the subject company in the past twelve months or mandated by the subject company for any other assignment in the past twelve months.

PL or its associates might have received any compensation for investment banking or merchant banking or brokerage services from the subject company in the past twelve months.

PL or its associates might have received any compensation for products or services other than investment banking or merchant banking or brokerage services from the subject company in the past twelve months PL or its associates might have received any compensation or other benefits from the subject company or third party in connection with the research report.

PL encourages independence in research report preparation and strives to minimize conflict in preparation of research report. PL or its analysts did not receive any compensation or other benefits from the subject Company or third party in connection with the preparation of the research report. PL or its Research Analysts do not have any material conflict of interest at the time of publication of this report.

It is confirmed that Mrs. Vaishali Parekh B.com, Research Analyst of this report has not received any compensation from the companies mentioned in the report in the preceding twelve months compensation of our Research Analysts is not based on any specific merchant banking, investment banking or brokerage service transactions.

The Research analysts for this report certifies that all of the views expressed in this report accurately reflect his or her personal views about the subject company or companies and its or their securities, and no part of his or her compensation was, is or will be, directly or indirectly related to specific recommendations or views expressed in this report.

The research analysts for this report has not served as an officer, director or employee of the subject company PL or its research analysts have not engaged in market making activity for the subject company

Our sales people, traders, and other professionals or affiliates may provide oral or written market commentary or trading strategies to our clients that reflect opinions that are contrary to the opinions expressed herein, and our proprietary trading and investing businesses may make investment decisions that are inconsistent with the recommendations expressed herein. In reviewing these materials, you should be aware that any or all of the foregoing, among other things, may give rise to real or potential conflicts of interest.

PL and its associates, their directors and employees may (a) from time to time, have a long or short position in, and buy or sell the securities of the subject company or (b) be engaged in any other transaction involving such securities and earn brokerage or other compensation or act as a market maker in the financial instruments of the subject company or act as an advisor or lender/borrower to the subject company or may have any other potential conflict of interests with respect to any recommendation and other related information and opinions.

Regd. Office: 3rd Floor, Sadhana House, 570, P. B. Marg, Behind Mahindra Tower, Worli, Mumbai - 400 018, India.