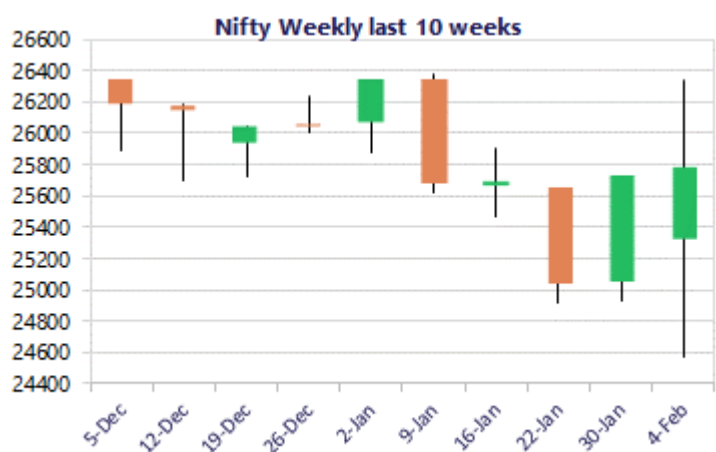
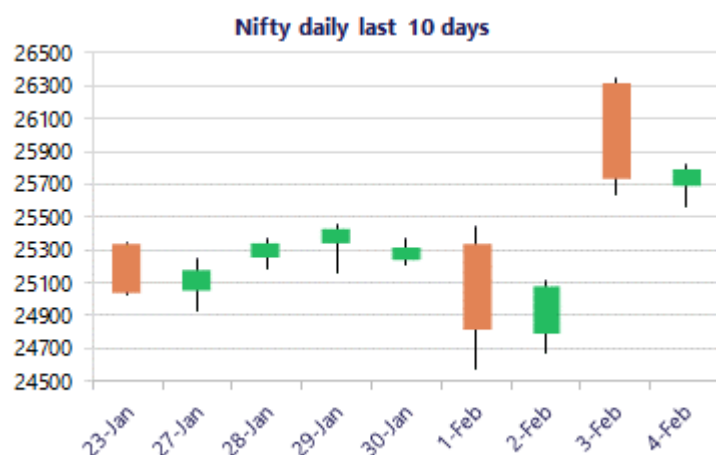


Date: 05<sup>th</sup> February 2026

\* Sensex 83817.69 + 78.56

\* Nifty 25776.00 + 48.45

\* Bank Nifty 60238.15 + 196.85



\*Blue candle → Close rate > Open rate \* Red candle → Close rate < Open rate

## Market Preview

### Nifty consolidates near 25750 zone

Nifty witnessed a narrow rangebound session with no major directional movement visible consolidating near the 25700-25800 zone with bias maintained overall positive. BankNifty had a lack lustre session with mild movement witnessed and settled down to close near the 60200 zone with a marginal gain. The market breadth was positive with the advance decline indicating a ratio of 2:1 at close.

## Market Forecast

### Nifty daily range 25500-26000

Nifty, witnessed consolidation having a rangebound session between 25800 and 25700 levels for the entire session with bias maintained with a cautiously positive approach as of now. As mentioned earlier, the index currently sustaining above the important 50EMA at 25650 level, would have the resistance band of 26300-26200 levels on the upside whereas on the downside the 25400 zone would be the important support zone which needs to be sustained for the overall trend to remain intact.

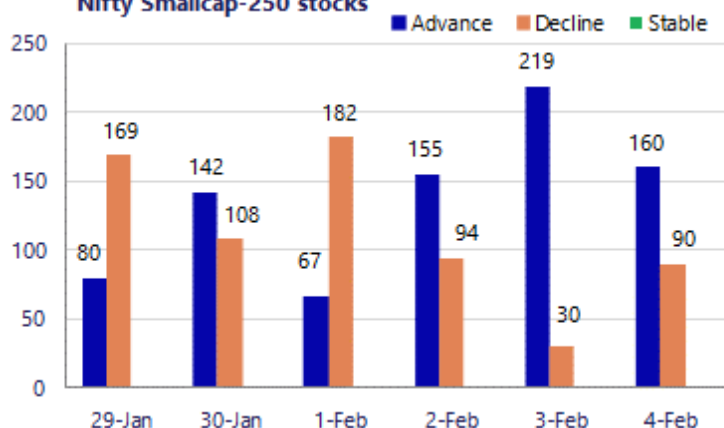
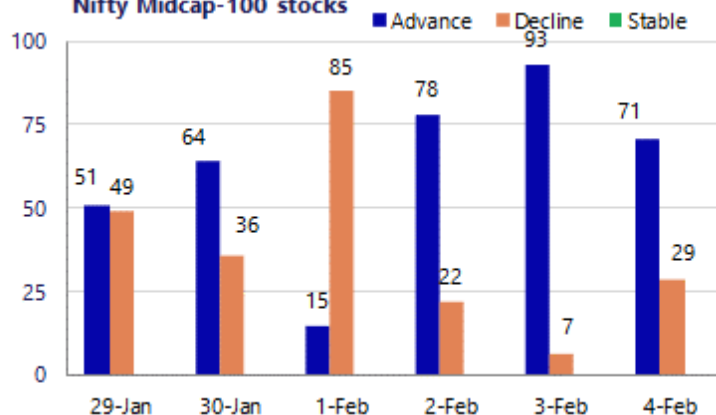
BankNifty since the last two sessions is hovering near the 60200 zone with very narrow movement visible finding consolidation as of now and would need to move past the resistance zone of 60400 level to trigger for further fresh upward move in the coming days. The overall bias is currently maintained with a cautiously positive approach and would need to sustain above the 50EMA level of 59100 zone as of now and would have the important and crucial support positioned near the 58000 zone.

The support for the day is seen at 25500 levels, while the resistance is seen at 26000 levels. BankNifty would have the daily range of 59600-61000 levels.

Sensex	Period	Closing	% Chng	Trend	Reversal	2 Sup	1 Sup	Pivot	1 Res	2 Res
Nifty	Daily	25776.00	0.19%	3	25153.50	25465	25620	25720	25875	25974
	Weekly	25320.65	1.09%	-4	25847.85	24714	25017	25236	25540	25759
	Monthly	25320.65	-3.10%	-1	25950.25	24084	24703	25538	26156	26991
Bank Nifty	Daily	60238.15	0.33%	2	59565.20	59675	59957	60173	60454	60671
	Weekly	59610.45	1.95%	-4	60432.00	57338	58474	59266	60403	61195
	Monthly	59610.45	0.05%	4	58708.15	57085	58348	59393	60655	61700
Sensex	Daily	83817.69	0.09%	3	81637.90	82801	83309	83628	84137	84456
	Weekly	82269.78	0.90%	-4	84040.75	80425	81347	82018	82940	83611
	Monthly	82269.78	-3.46%	-1	84767.90	78295	80283	83083	85070	87870

**Gainers - Losers ( Nifty 500 Stocks )**

Gainers				Losers			
Company Name	Last Price	% Gain	Volume	Company Name	Last Price	% Loss	Volume
BLS Internation	289.35	12.43%	33915845	CenturyPlyboard	797.25	-4.58%	381659
Adani Power	155.29	8.13%	78422841	Authum Invest	503.1	-4.46%	185074
Amara Raja	885.7	5.91%	664830	Asahi India	963.30	-2.97%	77250
ACME Solar	228.73	5.24%	1928910	Apar Ind	9,476.50	-2.89%	185304
Aditya Birla F	68.84	4.72%	6439188	Chalet Hotels	870.85	-2.77%	132951
Angel One	2,686.70	3.82%	1390622	APTUS VALUE	273.65	-2.75%	4749653
CESC	152.83	3.66%	2695261	Bosch	36710	-2.73%	33810

**Nifty Smallcap-250 stocks**

**Nifty Midcap-100 stocks**




### BankNifty Daily chart with RSI indicator



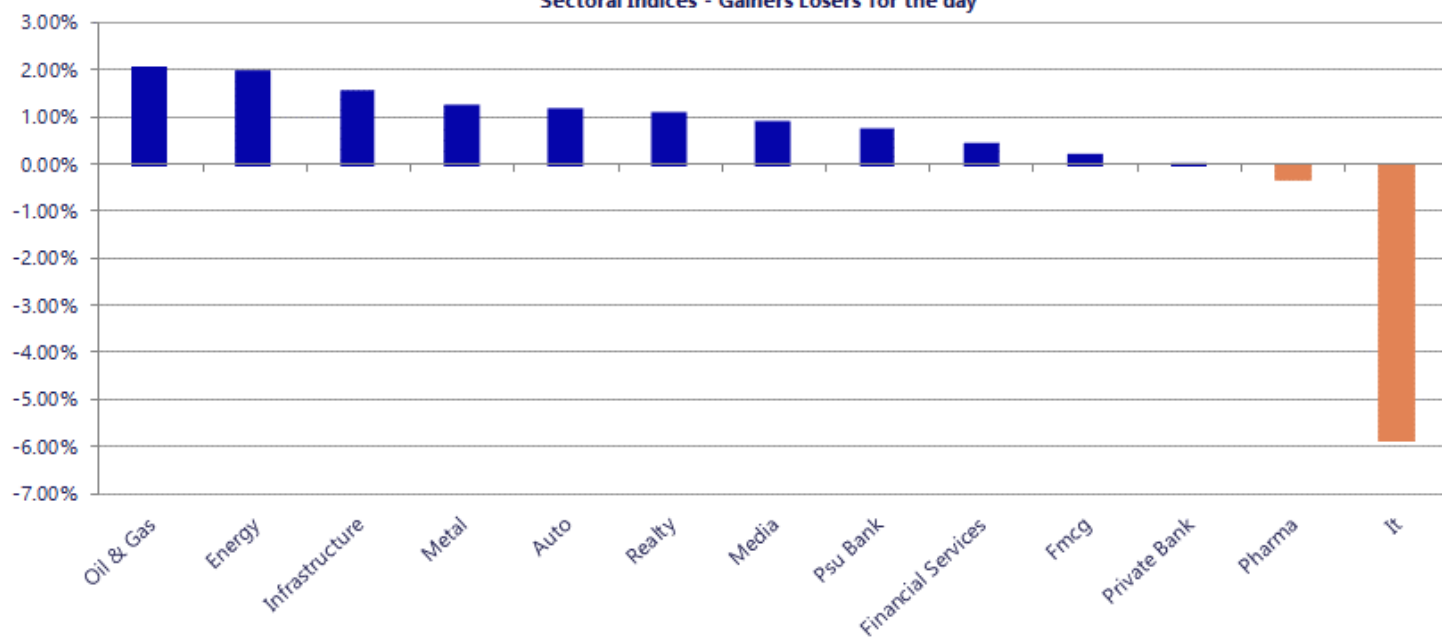
Breakouts - Cross above 200 DMA			
Company Name	LCP	Change %	200 DMA
Pokarna	955.2	5.44	905.96
STEL Holdings	467.45	5.42	443.42
Power Finance	414.6	5.00	394.86
Yudiz Solutions	33.05	4.42	31.65
McLeod	43.92	4.20	42.15
Osel Devices	491.4	3.99	472.55
Western Carrier	118.91	3.39	115.01
Autoline Ind	78.59	3.38	76.02
IPHL	59.95	3.26	58.06
Sportking India	107.14	3.21	103.81
Garuda Const	175.74	3.21	170.28
RNFI Services	306.5	2.63	298.64
Zota Health Car	1328.2	2.58	1294.76
Gallantt Ispat	585.85	2.41	572.05
DDEVPLASTIK	302.05	2.31	295.22
Eternal	294.15	2.27	287.62
Tega Industries	1823.1	2.17	1784.32
Tembo Global	585.65	2.10	573.6

\* Stocks crossing above its Simple Moving Average (200DMA)

Breakdown - Cross below 200 DMA			
Company Name	LCP	Change %	200 DMA
Global Pet	111.8	-11.88	126.87
TCS	2999.1	-6.73	3215.41
E2E Networks	2452.4	-4.09	2557.08
Cigniti Tech	1583.5	-4.03	1649.97
Sai Life Sci	810	-2.74	832.78
JTL Ind.	68.15	-2.64	70
Sundram	950.4	-2.61	975.86
Mphasis	2688.1	-2.20	2748.43
Alldigi Tech	899.45	-1.49	913.02
Anant Raj	555.15	-1.45	563.31
Shanthala	30.95	-1.28	31.35
AvenuesAI	17.39	-1.19	17.6
Tata Nifty Ind	92.84	-1.09	93.86
Banaras Beads	121.38	-1.02	122.63
Infosys	1535.8	-0.87	1549.3
Sky Gold	320.75	-0.75	323.19
MO Defence	87.26	-0.62	87.8
Brace Port Logi	82.35	-0.58	82.83

\* Stocks crossing below its Simple Moving Average (200DMA)

Sectoral Indices - Gainers Losers for the day



Stocks witnessing a volume surge as compared to their 5 day average

Watch out for the stocks that have seen a huge spurt in its share price over the last three days

Volume Shockers - NSE					
Company name	LCP	% Chg	Volume	Avg Vol *	% Chg
Westlife Food	480	-0.71	517648	2225	23163
Pokarna	946.65	8.83	330258	3002	10902
BASF	3754.1	-0.11	84319	1387	5977
Faze Three	525.6	20	68889	1576	4271
Sheela Foam	597.7	13.93	160571	3798	4128
Mastek	2070.4	-1.46	103456	2593	3890
APTUS VALUE	278	-1.4	1635219	45412	3501
Transcorp Intl	31.01	8.65	384224	11141	3349
Kimia Bio	32	0	51710	1527	3287
Oberoi Realty	1541.7	0.9	666227	19867	3254
Nazara	278	-2.25	642032	19281	3230
Avadh Sugar	361.4	3.27	30801	1002	2975
Sapphire Foods	201.8	6.66	93319	3102	2909
DELPHI WORLD	228.95	0	42484	1582	2585
Endurance Techn	2454.5	-1.97	72130	3099	2227
Firstsource Sol	304.2	-1.82	687135	29725	2212
Delhivery	446.65	0.69	731329	32308	2164
Ethos	2602.9	0.57	66751	3193	1990
GMR Airports	98.2	3.12	57346777	2756217	1981
Indo Count	324.4	13.07	631196	30875	1944
Devyani	122.8	5.63	1916475	98445	1847

Price Shockers - NSE				
Company name	LCP	Prv Close	% Chg	Volume
Garware HiTech	4291	2956.55	45.14	30057
Faze Three	525.6	366.95	43.23	68889
Indo Count	324.4	229.95	41.07	631196
Avanti Feeds	1071.1	779.7	37.37	716195
Gokaldas Export	835.3	610.1	36.91	1684884
Nelcast	123.51	90.6	36.32	54697
Pokarna	946.65	701.85	34.88	330258
ADF Foods	227.55	171.85	32.41	130204
Cenlub	252.15	192.1	31.26	74876
Shiv Texchem	160	122.3	30.83	35200
Waterbase	53.8	41.2	30.58	676546
Carysil	1035.1	794.15	30.34	32715
NGL Fine Chem	2188.25	1695.05	29.1	4060
Magna Electro	950	744.85	27.54	6655
Shilchar Techno	4067.55	3189.75	27.52	12617
Apex Frozen	374.7	295.85	26.65	594811
Prithvi Exc	119.95	95.6	25.47	17217
Camlin Fine	178	142.1	25.26	367479
Kitex Garments	213	170.95	24.6	1593200
IZMO	715.45	574.55	24.52	11253
B2B Software	49.13	39.54	24.25	210962



Nifty 50 stocks - Summary Details											
Symbol	LTP	Chng	% Chng	Volume (lacs)	Turnover (crs.)	52w High	Diff with 52w H	52w Low	Diff with 52w L	30 days % chng	365 days % chng
NIFTY 50	25776.00	48.45	0.19%	4297.52	36895.61	26373.20	2.26%	21743.65	18.54%	-2.28%	9.56%
ADANIENT	2225.00	22.40	1.02%	20.52	455.29	2616.50	14.96%	1848.00	20.40%	-3.39%	-2.97%
ADANIPTS	1565.20	34.40	2.25%	66.32	1026.28	1572.30	0.45%	1036.50	51.01%	2.77%	41.20%
APOLLOHOSP	7101.00	12.50	0.18%	2.16	153.49	8099.50	12.33%	6001.00	18.33%	-0.58%	3.62%
ASIANPAINT	2450.00	24.00	0.99%	9.71	237.74	2985.70	17.94%	2124.75	15.31%	-12.50%	3.18%
AXISBANK	1340.00	-16.20	-1.19%	66.72	898.47	1418.30	5.52%	978.05	37.01%	7.05%	35.87%
BAJAJ-AUTO	9625.00	29.50	0.31%	2.01	193.67	9941.00	3.18%	7089.35	35.77%	0.98%	4.80%
BAJAJFINSV	2017.00	4.30	0.21%	10.79	217.60	2195.00	8.11%	1727.25	16.78%	-1.26%	14.75%
BAJFINANCE	964.00	-0.40	-0.04%	174.88	1680.62	1102.50	12.56%	792.11	21.70%	-2.63%	-87.95%
BEL	439.00	0.05	0.01%	123.98	544.49	461.65	4.91%	240.25	82.73%	8.88%	55.77%
BHARTIARTL	2022.80	25.50	1.28%	74.65	1510.02	2174.50	6.98%	1559.50	29.71%	-5.17%	23.04%
CIPLA	1329.00	6.20	0.47%	15.90	211.35	1673.00	20.56%	1281.70	3.69%	-12.49%	-8.11%
COALINDIA	434.00	4.60	1.07%	114.70	500.03	461.55	5.97%	349.25	24.27%	0.35%	11.45%
DRREDDY	1239.80	4.40	0.36%	9.48	117.73	1379.70	10.14%	1020.00	21.55%	-1.65%	2.53%
EICHERMOT	7271.00	56.00	0.78%	2.60	189.52	7613.50	4.50%	4646.00	56.50%	-1.63%	33.86%
ETERNAL	293.50	13.70	4.90%	648.93	1883.91	368.45	20.34%	194.80	50.67%	-1.53%	#VALUE!
GRASIM	2835.00	26.10	0.93%	5.66	161.27	2977.80	4.80%	2301.65	23.17%	-1.66%	15.08%
HCLTECH	1617.60	-77.70	-4.58%	58.34	938.75	1780.10	9.13%	1302.75	24.17%	3.36%	0.08%
HDFCBANK	949.00	0.30	0.03%	243.67	2321.92	1020.50	7.01%	830.55	14.26%	-5.28%	-43.90%
HDFCLIFE	721.30	1.15	0.16%	48.26	348.41	820.75	12.12%	600.35	20.15%	-4.60%	15.13%
HINDALCO	970.00	14.70	1.54%	43.88	422.52	1029.80	5.81%	546.45	77.51%	3.20%	62.90%
HINDUNILVR	2371.00	2.40	0.10%	12.33	292.53	2750.00	13.78%	2136.00	11.00%	0.88%	-5.48%
ICICIBANK	1406.10	16.40	1.18%	110.80	1558.81	1500.00	6.26%	1200.10	17.17%	2.53%	10.68%
INDIGO	4956.00	9.80	0.20%	10.26	507.83	6232.50	20.48%	4157.85	19.20%	-3.13%	10.10%
INFY	1534.00	-122.00	-7.37%	288.23	4436.96	1924.00	20.27%	1307.00	17.37%	0.95%	-10.55%
ITC	313.85	3.70	1.19%	111.94	351.11	465.20	32.53%	302.00	3.92%	-9.54%	-31.54%
JIOFIN	267.85	3.95	1.50%	145.56	389.55	338.60	20.89%	198.65	34.84%	-12.53%	9.27%
JSWSTEEL	1225.10	-4.30	-0.35%	10.62	130.68	1245.00	1.60%	905.20	35.34%	4.12%	31.59%
KOTAKBANK	412.00	-3.80	-0.91%	149.47	617.99	460.38	10.51%	375.44	9.74%	-81.06%	-78.15%
LT	4080.20	41.40	1.03%	14.03	573.08	4195.00	2.74%	2965.30	37.60%	-2.99%	17.15%
M&M	3574.90	47.00	1.33%	23.95	858.31	3839.90	6.90%	2425.00	47.42%	-7.22%	14.66%
MARUTI	15009.00	227.00	1.54%	4.51	678.97	17370.00	13.59%	11059.45	35.71%	-12.84%	14.44%
MAXHEALTH	1022.50	19.00	1.89%	15.89	161.73	1314.30	22.20%	933.80	9.50%	-5.56%	-9.45%
NESTLEIND	1295.10	-12.90	-0.99%	8.76	114.79	1340.40	3.38%	1055.00	22.76%	2.21%	-43.80%
NTPC	366.80	8.25	2.30%	155.15	567.20	371.45	1.25%	292.80	25.27%	1.83%	12.86%
ONGC	266.00	9.00	3.50%	266.24	710.90	277.77	4.24%	205.00	29.76%	6.44%	-0.21%
POWERGRID	289.50	6.30	2.22%	277.74	802.62	322.00	10.09%	247.30	17.06%	4.52%	-2.29%
RELIANCE	1455.40	18.30	1.27%	83.33	1212.71	1611.80	9.70%	1114.85	30.55%	-9.75%	13.64%
SBILIFE	2038.00	35.90	1.79%	11.10	225.55	2109.60	3.39%	1379.85	47.70%	-3.16%	37.66%
SBIN	1067.30	3.10	0.29%	73.11	781.08	1089.80	2.06%	680.00	56.96%	6.53%	38.93%
SHRIRAMFIN	998.70	-1.70	-0.17%	44.03	440.82	1041.50	4.11%	516.00	93.55%	-0.98%	88.12%
SUNPHARMA	1703.00	0.90	0.05%	39.53	675.46	1851.20	8.01%	1548.00	10.01%	-1.50%	-2.30%
TATACONSUM	1148.60	-6.80	-0.59%	11.09	128.35	1220.90	5.92%	930.10	23.49%	-1.31%	8.00%
TMPV	375.40	3.35	0.90%	101.41	378.64	744.00	49.54%	335.60	11.86%	0.46%	#VALUE!
TATASTEEL	195.20	2.27	1.18%	138.57	270.63	202.99	3.84%	125.30	55.79%	5.50%	45.09%
TCS	2999.90	-225.40	-6.99%	108.50	3277.36	4150.00	27.71%	2866.60	4.65%	-0.78%	-20.82%
TECHM	1639.00	-77.50	-4.52%	48.23	785.72	1854.00	11.60%	1209.40	35.52%	6.48%	4.26%
TITAN	4135.10	66.50	1.63%	9.17	378.97	4312.10	4.10%	2925.00	41.37%	0.42%	14.54%
TRENT	4021.00	198.20	5.18%	19.25	765.35	6261.00	35.78%	3645.00	10.32%	-13.31%	-38.24%
ULTRACEMCO	12758.00	168.00	1.33%	1.60	204.04	13097.00	2.59%	10047.85	26.97%	5.81%	11.82%
WIPRO	233.50	-9.19	-3.79%	259.95	604.79	323.60	27.84%	226.26	3.20%	-9.78%	-20.38%

## Disclaimer / Disclosures

### ANALYST CERTIFICATION

I, Mrs. Vaishali Parekh B.com, Research Analyst, author and the name subscribed to this report, hereby certify that all of the views expressed in this research report accurately reflect our views about the subject issuer(s) or securities. We also certify that no part of our compensation was, is, or will be directly or indirectly related to the specific recommendation(s) or view(s) in this report.

Terms & conditions and other disclosures:

Prabhudas Lilladher Pvt. Ltd, Mumbai, India (hereinafter referred to as "PL") is engaged in the business of Stock Broking, Portfolio Manager, Depository Participant and distribution for third party financial products. PL is a subsidiary of Prabhudas Lilladher Advisory Services Pvt Ltd. which has its various subsidiaries engaged in business of commodity broking, investment banking, financial services (margin funding) and distribution of third party financial/other products, details in respect of which are available at [www.plindia.com](http://www.plindia.com)

This document has been prepared by the Research Division of PL and is meant for use by the recipient only as information and is not for circulation. This document is not to be reported or copied or made available to others without prior permission of PL. It should not be considered or taken as an offer to sell or a solicitation to buy or sell any security.

The information contained in this report has been obtained from sources that are considered to be reliable. However, PL has not independently verified the accuracy or completeness of the same. Neither PL nor any of its affiliates, its directors or its employees accepts any responsibility of whatsoever nature for the information, statements and opinion given, made available or expressed herein or for any omission therein.

Recipients of this report should be aware that past performance is not necessarily a guide to future performance and value of investments can go down as well. The suitability or otherwise of any investments will depend upon the recipient's particular circumstances and, in case of doubt, advice should be sought from an independent expert/advisor.

Either PL or its affiliates or its directors or its employees or its representatives or its clients or their relatives may have position(s), make market, act as principal or engage in transactions of securities of companies referred to in this report and they may have used the research material prior to publication.

PL may from time to time solicit or perform investment banking or other services for any company mentioned in this document.

PL is registered as Research Analyst under Securities and Exchange Board of India (Research Analysts) Regulations, 2014 PL submits that no material disciplinary action has been taken on us by any Regulatory Authority impacting Equity Research Analysis activities.

PL or its research analysts or its associates or his relatives do not have any financial interest in the subject company.

PL or its research analysts or its associates or his relatives do not have actual/beneficial ownership of one per cent or more securities of the subject company at the end of the month immediately preceding the date of publication of the research report.

PL or its research analysts or its associates or his relatives do not have any material conflict of interest at the time of publication of the research report.

PL or its associates might have received compensation from the subject company in the past twelve months.

PL or its associates might have managed or co-managed public offering of securities for the subject company in the past twelve months or mandated by the subject company for any other assignment in the past twelve months.

PL or its associates might have received any compensation for investment banking or merchant banking or brokerage services from the subject company in the past twelve months.

PL or its associates might have received any compensation for products or services other than investment banking or merchant banking or brokerage services from the subject company in the past twelve months PL or its associates might have received any compensation or other benefits from the subject company or third party in connection with the research report.

PL encourages independence in research report preparation and strives to minimize conflict in preparation of research report. PL or its analysts did not receive any compensation or other benefits from the subject Company or third party in connection with the preparation of the research report. PL or its Research Analysts do not have any material conflict of interest at the time of publication of this report.

It is confirmed that Mrs. Vaishali Parekh B.com, Research Analyst of this report has not received any compensation from the companies mentioned in the report in the preceding twelve months compensation of our Research Analysts is not based on any specific merchant banking, investment banking or brokerage service transactions.

The Research analysts for this report certifies that all of the views expressed in this report accurately reflect his or her personal views about the subject company or companies and its or their securities, and no part of his or her compensation was, is or will be, directly or indirectly related to specific recommendations or views expressed in this report.

The research analysts for this report has not served as an officer, director or employee of the subject company PL or its research analysts have not engaged in market making activity for the subject company

Our sales people, traders, and other professionals or affiliates may provide oral or written market commentary or trading strategies to our clients that reflect opinions that are contrary to the opinions expressed herein, and our proprietary trading and investing businesses may make investment decisions that are inconsistent with the recommendations expressed herein. In reviewing these materials, you should be aware that any or all of the foregoing, among other things, may give rise to real or potential conflicts of interest.

PL and its associates, their directors and employees may (a) from time to time, have a long or short position in, and buy or sell the securities of the subject company or (b) be engaged in any other transaction involving such securities and earn brokerage or other compensation or act as a market maker in the financial instruments of the subject company or act as an advisor or lender/borrower to the subject company or may have any other potential conflict of interests with respect to any recommendation and other related information and opinions.

**Regd. Office:** 3<sup>rd</sup> Floor, Sadhana House, 570, P. B. Marg, Behind Mahindra Tower, Worli, Mumbai - 400 018, India.