

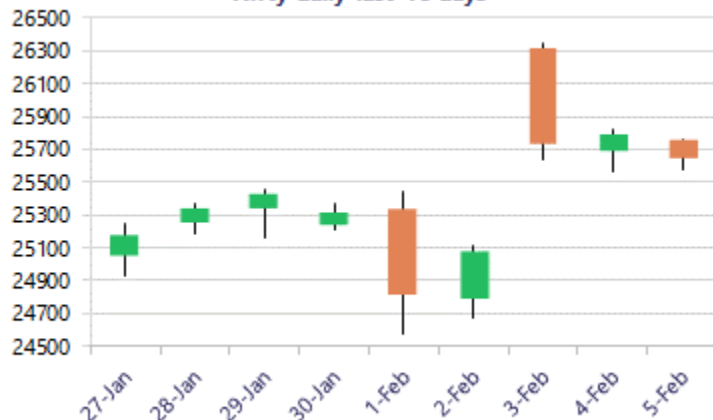
Date: 06<sup>th</sup> February 2026

\* Sensex 83313.93 - 503.76

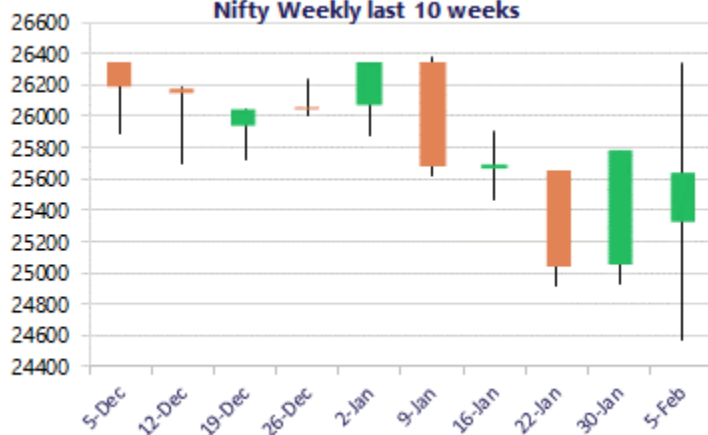
\* Nifty 25642.80 - 133.20

\* Bank Nifty 60063.65 - 174.50

Nifty daily last 10 days



Nifty Weekly last 10 weeks



\*Blue candle → Close rate > Open rate \* Red candle → Close rate < Open rate

## Market Preview

### Nifty consolidates near the 50 EMA zone.

Nifty is consolidating near the 25650 zone with the overall trend maintained positive, anticipating further upward movement in coming days. Bank Nifty is witnessing some range-bound movement by holding on to the 59800 zone and would aim for further rise in coming days with the PSU & financial stocks well set for the future. The market breadth was weak, with the advance decline indicating a ratio of 1:2 close.

## Market Forecast

### Nifty daily range 25500-25800

Nifty since the last two sessions is hovering in the range of the 25800–25550 zone, visibly finding consolidation as of now, and would need to move past the resistance zone of the 25850 level to trigger a further fresh upward move in the coming days. The overall bias is currently maintained with a cautiously positive approach and would need to be sustained above the level of the 25850 zone as of now and would have the important and crucial support positioned near the 25500 zone.

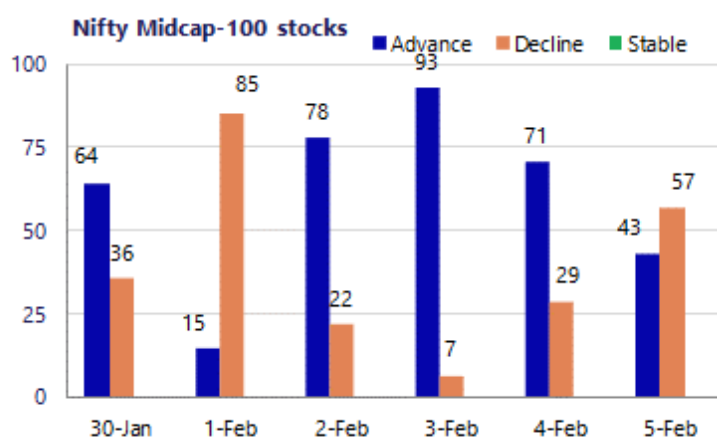
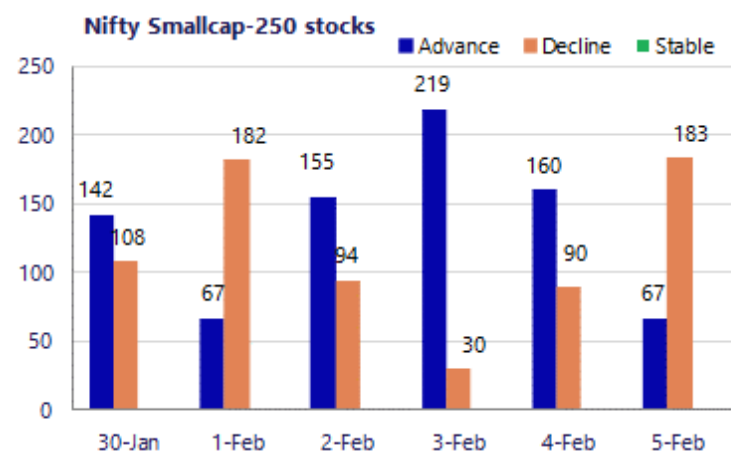
Bank Nifty once again respected the important support zone of the 59800 level during the intraday session and witnessed a revival to close above the 60000 zone with bias once again maintained intact, continuing with the overall consolidation phase. With the PSU Banks looking good and picking up momentum during the session, one can expect further gains, and on the upside, as mentioned earlier, the index would desperately need a decisive breach above the 60500 level to trigger a fresh upward move in the coming days.

The support for the day is seen at 25500 levels, while the resistance is seen at 25800 levels. BankNifty would have the daily range of 59500-60600 levels.

Sensex	Period	Closing	% Chng	Trend	Reversal	2 Sup	1 Sup	Pivot	1 Res	2 Res
Nifty	Daily	25642.80	-0.52%	4	25287.55	25482	25562	25660	25740	25838
	Weekly	25320.65	1.09%	-4	25847.85	24714	25017	25236	25540	25759
	Monthly	25320.65	-3.10%	-1	25950.25	24084	24703	25538	26156	26991
Bank Nifty	Daily	60063.65	-0.29%	3	59646.10	59644	59854	60091	60301	60538
	Weekly	59610.45	1.95%	-4	60432.00	57338	58474	59266	60403	61195
	Monthly	59610.45	0.05%	4	58708.15	57085	58348	59393	60655	61700
Sensex	Daily	83313.93	-0.60%	4	82122.90	82784	83049	83417	83682	84049
	Weekly	82269.78	0.90%	-4	84040.75	80425	81347	82018	82940	83611
	Monthly	82269.78	-3.46%	-1	84767.90	78295	80283	83083	85070	87870

**Gainers - Losers ( Nifty 500 Stocks )**

Gainers				Losers			
Company Name	Last Price	% Gain	Volume	Company Name	Last Price	% Loss	Volume
Aditya Birla Re	1303.5	6.95%	758134	Tube Investment	2,381.60	-9.70%	2931847
Birlasoft	460.55	4.59%	2758528	Jaiprakash Pow	14.98	-7.01%	53382739
BLS Internation	300.1	3.72%	26361232	IDBI Bank	102.98	-5.66%	63622546
Aditya Birla F	70.89	2.98%	6110550	Redington	267.25	-5.57%	3520634
Avenue Supermar	3,934.90	2.89%	867059	Valor Estate	120.68	-5.50%	3481300
Aarti Ind	453.60	2.42%	2812947	MCX India	2410.4	-5.23%	5411849
Adani Energy	1,011.45	2.36%	1769603	JM Financial	124.9	-4.99%	3154052



## Nifty Daily chart with RSI indicator



## BankNifty Daily chart with RSI indicator



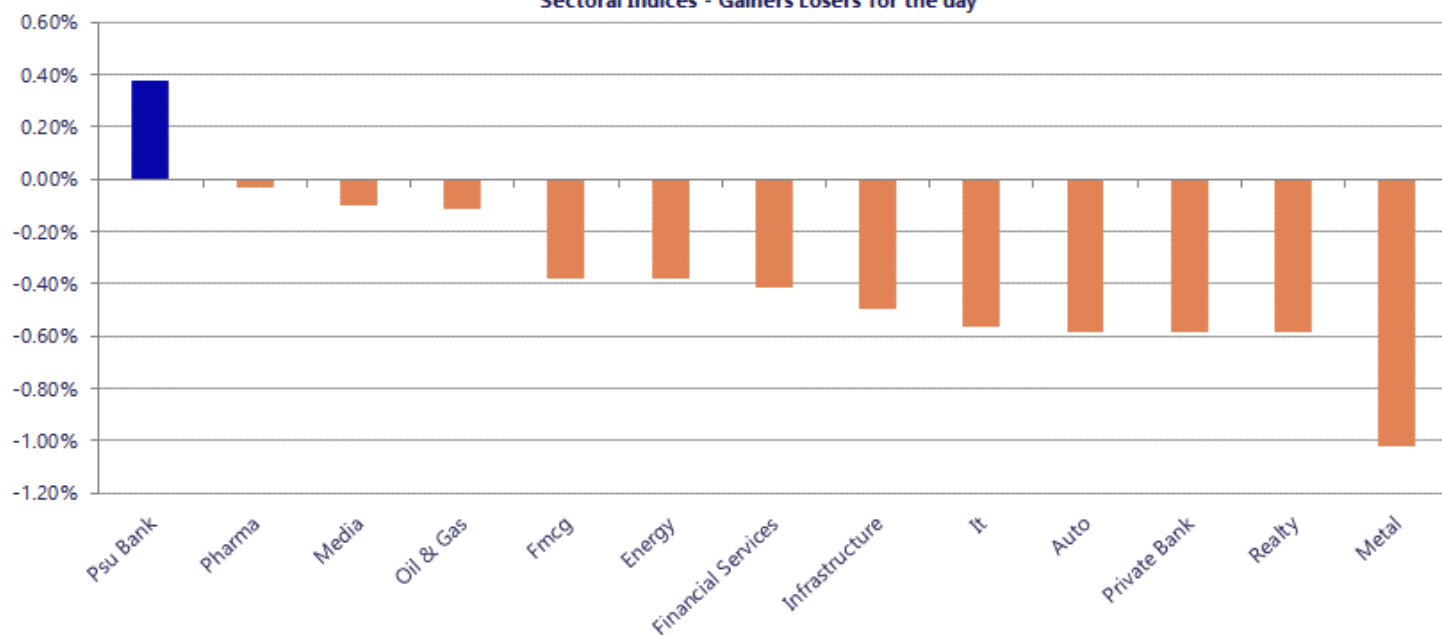
Breakouts - Cross above 200 DMA			
Company Name	LCP	Change %	200 DMA
Laxmi Goldorna	302.55	3.68	291.81
Manorama Indust	1428.7	3.55	1379.77
Metropolis	1972.5	3.44	1906.92
RSWM	160.43	2.77	156.11
Ambani Orgochem	114.2	2.42	111.5
Esprit Stones	90.7	2.27	88.69
Rane Madras	839.4	1.95	823.37
Sanghvi Movers	327.45	1.95	321.18
Viviana Power	787.25	1.67	774.33
Kanpur Plast	200.6	1.50	197.64
Banaras Beads	124.38	1.44	122.62
Indian Terrain	36.79	1.15	36.37
Dr Agarwals	456.45	1.04	451.77
Gabriel India	986.2	0.98	976.59
Salona Cotspin	258.56	0.97	256.08
SIS	350.7	0.89	347.62
Krystal Integra	607.85	0.73	603.47
NK Industries	68.17	0.66	67.72

\* Stocks crossing above its Simple Moving Average (200DMA)

Breakdown - Cross below 200 DMA			
Company Name	LCP	Change %	200 DMA
Biofil Chem	37.54	-9.78	41.61
Parag Milk Food	241.95	-6.86	259.76
Gala Precision	764.9	-5.59	810.23
Zuari Agro Chem	254.05	-4.77	266.78
Emkay Global	248.85	-3.61	258.17
NAVA	561.45	-2.72	577.17
Redington	267.25	-2.15	273.11
Menon Bearings	117.16	-2.10	119.67
Aurum PropTech	178.68	-1.58	181.54
Gokaldas Export	812	-1.56	824.9
Manaksia Steels	60.95	-1.49	61.87
Centum Electron	2324.5	-1.44	2358.53
Arman Financial	1552.8	-1.42	1575.11
DDEVPLASTIK	292.3	-1.00	295.26
Mason Infratech	176.65	-0.96	178.37
UFO Moviez	74.33	-0.89	75
Latent View	428.1	-0.71	431.18
ICICI Bank	1396.5	-0.64	1405.49

\* Stocks crossing below its Simple Moving Average (200DMA)

Sectoral Indices - Gainers Losers for the day



Stocks witnessing a volume surge as compared to their 5 day average

Watch out for the stocks that have seen a huge spurt in its share price over the last three days

Volume Shockers - NSE					
Company name	LCP	% Chg	Volume	Avg Vol *	% Chg
Elh	341	2.97	2675101	10681	24946
Kirloskar Pneum	1150.05	0.22	318621	3032	10409
Sapphire Foods	218	7.52	250911	3102	7989
Max Financial	1695.4	-0.78	704847	12044	5752
Devyani	131.95	7.02	5060502	98445	5040
VST	229.55	0.02	760995	16288	4572
SMC Global Secu	85.67	10.03	642530	14653	4285
Tube Investment	2380.8	-9.72	114266	3488	3176
eMudhra	513.9	-2.1	351502	12602	2689
B Right Realest	621	-0.06	103200	4240	2334
Max Estates	387.4	-0.08	223420	11350	1868
Metropolis	1972.25	4.28	23936	1529	1465
Alembic Pharma	801.7	0.4	24287	1731	1303
Maxgrow India	69.87	4.99	178290	13589	1212
CreditAccess Gr	1297.5	-2.82	175741	14933	1077
FDC	369.4	-4.21	20488	1808	1033
ICICI Prudentia	656.75	-0.51	151087	13602	1011
VTM	82.9	19.99	341100	34570	887
Tuticorin Alkal	53.38	13.36	96659	10477	823
ABC India	65.66	-7.27	10209	1120	811
Westlife Food	532.9	11.72	920487	105427	773

Price Shockers - NSE				
Company name	LCP	Prv Close	% Chg	Volume
Pokarna	1104.8	724.9	52.41	307674
Cenlub	263.95	182.9	44.31	29972
Stratmont Indus	75.01	52.02	44.19	13379
Faze Three	525.95	365	44.1	29659
Gokaldas Export	812.6	580.1	40.08	263855
Avanti Feeds	1083.85	800.7	35.36	206642
Waterbase	55.5	41.02	35.3	154428
Prithvi Exc	127.9	94.75	34.99	22670
ADF Foods	230	172.35	33.45	36578
VTM	82.9	62.67	32.28	341100
Loyal Textiles	254	192.55	31.91	382
Magna Electro	977.9	741.45	31.89	2360
NGL Fine Chem	2299.7	1750	31.41	8613
Nelcast	118.07	90.88	29.92	10603
B2B Software	53.69	41.87	28.23	193961
Indo Count	305.75	239.1	27.88	115453
Garware HiTech	4160.15	3254.35	27.83	8397
Kabra Extrusion	252.45	199	26.86	7687
Shiv Texchem	152.55	120.6	26.49	19600
Shanti Educatio	175.85	139.95	25.65	385698
Kitex Garments	205.2	163.6	25.43	268691



Nifty 50 stocks - Summary Details											
Symbol	LTP	Chng	% Chng	Volume (lacs)	Turnover (crs.)	52w High	Diff with 52w H	52w Low	Diff with 52w L	30 days % chng	365 days % chng
NIFTY 50	25642.80	-133.20	-0.52%	3438.00	28581.22	26373.20	2.77%	21743.65	17.93%	-2.10%	10.34%
ADANIENT	2232.60	4.40	0.20%	9.92	220.73	2616.50	14.67%	1848.00	20.81%	-2.26%	-1.49%
ADANIPTS	1566.50	-1.40	-0.09%	32.85	513.93	1577.70	0.71%	1036.50	51.13%	5.26%	44.53%
APOLLOHOSP	7125.00	9.00	0.13%	2.35	166.51	8099.50	12.03%	6001.00	18.73%	-0.19%	4.67%
ASIANPAINT	2433.50	-19.20	-0.78%	10.47	254.17	2985.70	18.49%	2124.75	14.53%	-11.54%	7.00%
AXISBANK	1331.60	-7.10	-0.53%	37.66	499.60	1418.30	6.11%	978.05	36.15%	5.67%	35.30%
BAJAJ-AUTO	9659.50	20.50	0.21%	1.56	150.16	9941.00	2.83%	7089.35	36.25%	1.44%	7.98%
BAJAJFINSV	2001.00	-18.60	-0.92%	8.57	171.70	2195.00	8.84%	1727.25	15.85%	-0.92%	12.52%
BAJFINANCE	964.65	1.35	0.14%	60.20	579.01	1102.50	12.50%	802.50	20.21%	-2.74%	-88.57%
BEL	432.50	-6.70	-1.53%	143.45	620.09	461.65	6.31%	240.25	80.02%	8.94%	60.20%
BHARTIARTL	1992.20	-33.60	-1.66%	77.09	1543.33	2174.50	8.38%	1559.50	27.75%	-3.82%	22.60%
CIPLA	1332.70	6.00	0.45%	10.00	132.93	1673.00	20.34%	1281.70	3.98%	-12.23%	-6.61%
COALINDIA	432.60	-2.30	-0.53%	52.52	226.50	461.55	6.27%	349.25	23.87%	1.64%	16.28%
DRREDDY	1245.00	4.80	0.39%	9.53	118.83	1379.70	9.76%	1020.00	22.06%	-1.27%	3.02%
EICHERMOT	7193.00	-84.50	-1.16%	2.54	183.40	7613.50	5.52%	4646.00	54.82%	-0.78%	32.67%
ETERNAL	287.05	-7.10	-2.41%	303.83	875.67	368.45	22.09%	194.80	47.36%	3.52%	#VALUE!
GRASIM	2871.10	26.20	0.92%	7.63	217.08	2977.80	3.58%	2301.65	24.74%	-0.40%	15.01%
HCLTECH	1607.40	-14.40	-0.89%	31.84	513.34	1780.10	9.70%	1302.75	23.39%	-1.12%	-4.15%
HDFCBANK	949.70	-3.40	-0.36%	281.03	2670.40	1020.50	6.94%	830.55	14.35%	-4.84%	-43.20%
HDFCLIFE	719.00	-3.50	-0.48%	12.69	91.02	820.75	12.40%	600.35	19.76%	-4.29%	16.27%
HINDALCO	936.00	-28.95	-3.00%	45.80	428.02	1029.80	9.11%	546.45	71.29%	4.24%	68.10%
HINDUNILVR	2356.00	-15.00	-0.63%	19.62	466.57	2750.00	14.33%	2136.00	10.30%	0.98%	-2.91%
ICICIBANK	1394.60	-13.80	-0.98%	89.83	1259.44	1500.00	7.03%	1200.10	16.21%	3.91%	12.40%
INDIGO	4930.00	-30.70	-0.62%	11.89	579.21	6232.50	20.90%	4157.85	18.57%	-2.85%	12.90%
INFY	1520.00	-15.80	-1.03%	106.28	1624.43	1924.00	21.00%	1307.00	16.30%	-6.38%	-17.58%
ITC	310.10	-3.75	-1.19%	158.14	491.75	460.35	32.64%	302.00	2.68%	-10.34%	-30.92%
JIOFIN	269.95	1.95	0.73%	157.68	424.99	338.60	20.27%	198.65	35.89%	-11.17%	14.54%
JSWSTEEL	1241.00	12.80	1.04%	11.98	147.24	1245.00	0.32%	905.20	37.10%	4.02%	31.51%
KOTAKBANK	411.65	-0.70	-0.17%	248.15	1012.74	460.38	10.58%	375.44	9.64%	-81.21%	-78.12%
LT	4060.00	-27.10	-0.66%	14.33	582.01	4195.00	3.22%	2965.30	36.92%	-1.83%	24.26%
M&M	3575.00	1.00	0.03%	12.51	446.35	3839.90	6.90%	2425.00	47.42%	-6.01%	12.63%
MARUTI	15025.00	-46.00	-0.31%	3.75	564.03	17370.00	13.50%	11059.45	35.86%	-11.14%	14.70%
MAXHEALTH	1038.00	12.55	1.22%	38.42	396.67	1314.30	21.02%	933.80	11.16%	-3.50%	-10.44%
NESTLEIND	1303.50	0.30	0.02%	8.55	111.41	1340.40	2.75%	1055.00	23.55%	1.84%	-43.76%
NTPC	366.25	-1.00	-0.27%	187.90	690.72	371.45	1.40%	292.80	25.09%	4.30%	17.99%
ONGC	268.65	1.70	0.64%	152.68	410.20	277.77	3.28%	205.00	31.05%	10.56%	7.21%
POWERGRID	289.35	-0.05	-0.02%	98.70	284.90	322.00	10.14%	247.30	17.00%	6.81%	1.97%
RELIANCE	1441.90	-14.90	-1.02%	117.62	1699.54	1611.80	10.54%	1114.85	29.34%	-8.51%	16.93%
SBILIFE	2024.60	-17.10	-0.84%	9.26	186.82	2109.60	4.03%	1379.85	46.73%	-1.24%	39.85%
SBIN	1072.90	4.70	0.44%	95.49	1025.57	1089.80	1.55%	680.00	57.78%	6.93%	40.38%
SHRIRAMFIN	994.90	-3.90	-0.39%	57.76	569.82	1041.50	4.47%	525.10	89.47%	-1.14%	82.88%
SUNPHARMA	1703.10	9.70	0.57%	30.75	522.97	1851.20	8.00%	1548.00	10.02%	-1.37%	-2.08%
TATACONSUM	1151.80	-1.20	-0.10%	11.62	133.90	1220.90	5.66%	930.10	23.84%	-1.51%	11.26%
TMPV	375.60	0.15	0.04%	140.13	518.77	744.00	49.52%	335.60	11.92%	1.38%	#VALUE!
TATASTEEL	197.60	2.20	1.13%	312.93	613.53	202.99	2.66%	125.30	57.70%	6.85%	48.23%
TCS	2991.70	-7.40	-0.25%	35.22	1056.50	4150.00	27.91%	2866.60	4.36%	-7.74%	-26.29%
TECHM	1645.00	-0.30	-0.02%	17.21	282.69	1854.00	11.27%	1209.40	36.02%	2.07%	-0.57%
TITAN	4106.70	-37.30	-0.90%	6.94	283.77	4312.10	4.76%	2925.00	40.40%	2.28%	15.74%
TRENT	4132.00	119.40	2.98%	38.38	1562.01	6261.00	34.00%	3645.00	13.36%	-9.00%	-34.60%
ULTRACEMCO	12770.00	-36.00	-0.28%	1.72	220.28	13097.00	2.50%	10047.85	27.09%	7.62%	14.60%
WIPRO	233.18	-0.16	-0.07%	101.02	235.99	323.60	27.94%	226.26	3.06%	-13.26%	-25.59%

## Disclaimer / Disclosures

### ANALYST CERTIFICATION

I, Mrs. Vaishali Parekh B.com, Research Analyst, author and the name subscribed to this report, hereby certify that all of the views expressed in this research report accurately reflect our views about the subject issuer(s) or securities. We also certify that no part of our compensation was, is, or will be directly or indirectly related to the specific recommendation(s) or view(s) in this report.

Terms & conditions and other disclosures:

Prabhudas Lilladher Pvt. Ltd, Mumbai, India (hereinafter referred to as "PL") is engaged in the business of Stock Broking, Portfolio Manager, Depository Participant and distribution for third party financial products. PL is a subsidiary of Prabhudas Lilladher Advisory Services Pvt Ltd. which has its various subsidiaries engaged in business of commodity broking, investment banking, financial services (margin funding) and distribution of third party financial/other products, details in respect of which are available at [www.plindia.com](http://www.plindia.com)

This document has been prepared by the Research Division of PL and is meant for use by the recipient only as information and is not for circulation. This document is not to be reported or copied or made available to others without prior permission of PL. It should not be considered or taken as an offer to sell or a solicitation to buy or sell any security.

The information contained in this report has been obtained from sources that are considered to be reliable. However, PL has not independently verified the accuracy or completeness of the same. Neither PL nor any of its affiliates, its directors or its employees accepts any responsibility of whatsoever nature for the information, statements and opinion given, made available or expressed herein or for any omission therein.

Recipients of this report should be aware that past performance is not necessarily a guide to future performance and value of investments can go down as well. The suitability or otherwise of any investments will depend upon the recipient's particular circumstances and, in case of doubt, advice should be sought from an independent expert/advisor.

Either PL or its affiliates or its directors or its employees or its representatives or its clients or their relatives may have position(s), make market, act as principal or engage in transactions of securities of companies referred to in this report and they may have used the research material prior to publication.

PL may from time to time solicit or perform investment banking or other services for any company mentioned in this document.

PL is registered as Research Analyst under Securities and Exchange Board of India (Research Analysts) Regulations, 2014 PL submits that no material disciplinary action has been taken on us by any Regulatory Authority impacting Equity Research Analysis activities.

PL or its research analysts or its associates or his relatives do not have any financial interest in the subject company.

PL or its research analysts or its associates or his relatives do not have actual/beneficial ownership of one per cent or more securities of the subject company at the end of the month immediately preceding the date of publication of the research report.

PL or its research analysts or its associates or his relatives do not have any material conflict of interest at the time of publication of the research report.

PL or its associates might have received compensation from the subject company in the past twelve months.

PL or its associates might have managed or co-managed public offering of securities for the subject company in the past twelve months or mandated by the subject company for any other assignment in the past twelve months.

PL or its associates might have received any compensation for investment banking or merchant banking or brokerage services from the subject company in the past twelve months.

PL or its associates might have received any compensation for products or services other than investment banking or merchant banking or brokerage services from the subject company in the past twelve months PL or its associates might have received any compensation or other benefits from the subject company or third party in connection with the research report.

PL encourages independence in research report preparation and strives to minimize conflict in preparation of research report. PL or its analysts did not receive any compensation or other benefits from the subject Company or third party in connection with the preparation of the research report. PL or its Research Analysts do not have any material conflict of interest at the time of publication of this report.

It is confirmed that Mrs. Vaishali Parekh B.com, Research Analyst of this report has not received any compensation from the companies mentioned in the report in the preceding twelve months compensation of our Research Analysts is not based on any specific merchant banking, investment banking or brokerage service transactions.

The Research analysts for this report certifies that all of the views expressed in this report accurately reflect his or her personal views about the subject company or companies and its or their securities, and no part of his or her compensation was, is or will be, directly or indirectly related to specific recommendations or views expressed in this report.

The research analysts for this report has not served as an officer, director or employee of the subject company PL or its research analysts have not engaged in market making activity for the subject company

Our sales people, traders, and other professionals or affiliates may provide oral or written market commentary or trading strategies to our clients that reflect opinions that are contrary to the opinions expressed herein, and our proprietary trading and investing businesses may make investment decisions that are inconsistent with the recommendations expressed herein. In reviewing these materials, you should be aware that any or all of the foregoing, among other things, may give rise to real or potential conflicts of interest.

PL and its associates, their directors and employees may (a) from time to time, have a long or short position in, and buy or sell the securities of the subject company or (b) be engaged in any other transaction involving such securities and earn brokerage or other compensation or act as a market maker in the financial instruments of the subject company or act as an advisor or lender/borrower to the subject company or may have any other potential conflict of interests with respect to any recommendation and other related information and opinions.

**Regd. Office:** 3<sup>rd</sup> Floor, Sadhana House, 570, P. B. Marg, Behind Mahindra Tower, Worli, Mumbai - 400 018, India.