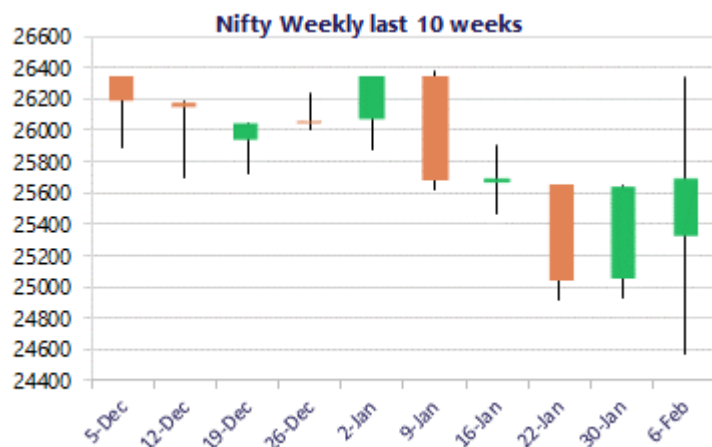
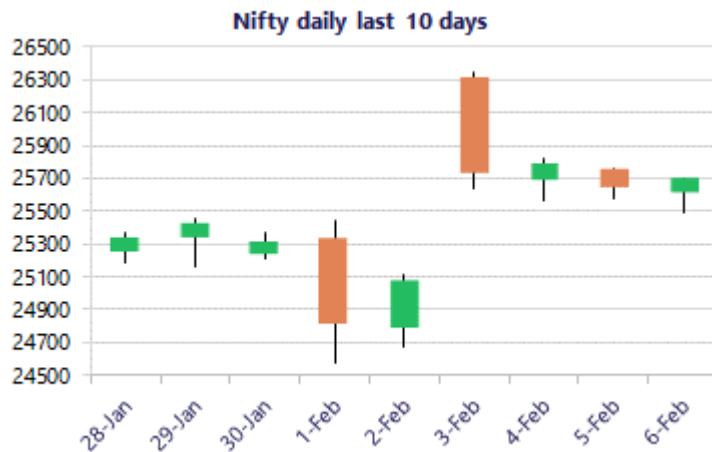


Date: 09<sup>th</sup> February 2026

\* Sensex 83580.40 + 266.47

\* Nifty 25693.70 + 50.90

\* Bank Nifty 60120.55 + 56.90



\*Blue candle → Close rate > Open rate \* Red candle → Close rate < Open rate

## Market Preview

### Nifty sustains near the 25650 level of 50EMA

Nifty witnessed some fluctuations during the intraday session sustaining above the important 50EMA level at 25650 zone with bias maintained with a cautiously positive approach. BankNifty overall is witnessing consolidation near the 60000 zone maintaining the positive bias and would need a decisive gain above the 60400 zone to carry on with the positive move. The market breadth was slightly on the weaker side with the advance decline indicating a ratio of 5:6 at close.

## Market Forecast

### Nifty daily range 25500-25900

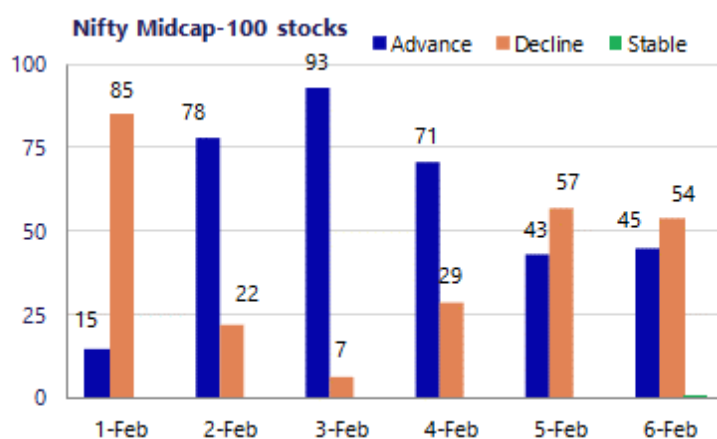
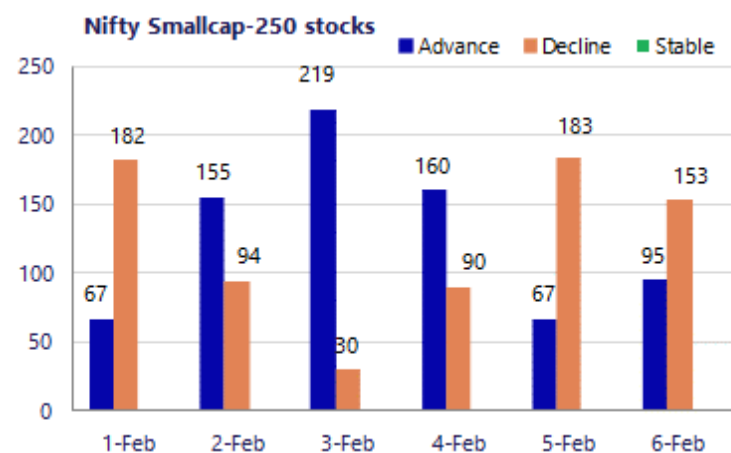
Nifty, amid some volatility witnessed sustained the important 25500 zone as the support and closed marginally in the green near 25700 level with the index sustaining near the important 50EMA level with bias overall maintained with a cautiously positive approach. The index would have the important support zone near the 200 period MA at 25250 level whereas on the upside a decisive breach above the 26000 level is necessary to establish clarity and thereafter, anticipate for further rise in the coming days.

BankNifty witnessed a rangebound session hovering near the 60000 zone with overall consolidation visible maintaining the bias intact and would need a decisive breach above the 60400 level to trigger for fresh upward move in the coming days. On the downside, the index would have the near-term support near the important 50EMA level at 59250 zone which needs to be sustained to maintain the bias intact whereas the 200 period MA at 57000 zone would be the major and crucial support for the coming days. The support for the day is seen at 25500 levels, while the resistance is seen at 25900 levels. BankNifty would have the daily range of 59600-60800 levels.

Sensex	Period	Closing	% Chng	Trend	Reversal	2 Sup	1 Sup	Pivot	1 Res	2 Res
Nifty	Daily	25693.70	0.20%	5	25382.60	25418	25556	25630	25768	25842
	Weekly	25693.70	1.47%	-5	25756.60	23766	24730	25536	26499	27305
	Monthly	25320.65	-3.10%	-1	25950.25	24084	24703	25538	26156	26991
Bank Nifty	Daily	60120.55	0.09%	4	59677.70	59466	59793	59972	60299	60477
	Weekly	60120.55	0.86%	-5	60300.50	55908	58014	59890	61996	63871
	Monthly	59610.45	0.05%	4	58708.15	57085	58348	59393	60655	61700
Sensex	Daily	83580.40	0.32%	5	82469.25	82686	83133	83373	83820	84059
	Weekly	83580.40	1.59%	-5	83721.30	77145	80363	83117	86335	89089
	Monthly	82269.78	-3.46%	-1	84767.90	78295	80283	83083	85070	87870

**Gainers - Losers ( Nifty 500 Stocks )**

Gainers				Losers			
Company Name	Last Price	% Gain	Volume	Company Name	Last Price	% Loss	Volume
Hitachi Energy	21871	13.92%	993823	BEML	1,617.40	-7.38%	1732906
Concord Biotech	1,327.20	13.61%	3828219	AAVAS Financier	1301.4	-5.66%	1086521
Godfrey Phillip	2188.3	10.41%	7288792	Birlasoft	435.70	-5.40%	1560727
MRF	146,455.00	8.51%	64372	APTUS VALUE	259.10	-4.23%	2450755
Data Patterns	2,723.70	7.93%	3563488	Caplin Labs	1,825.70	-4.11%	137275
Mahanagar Gas	1,152.60	7.57%	1212079	Aditya Birla F	68.82	-2.92%	7384161
LIC India	901.85	7.40%	15817666	BASF	3648.4	-2.81%	17744



## Nifty Daily chart with RSI indicator



## BankNifty Daily chart with RSI indicator



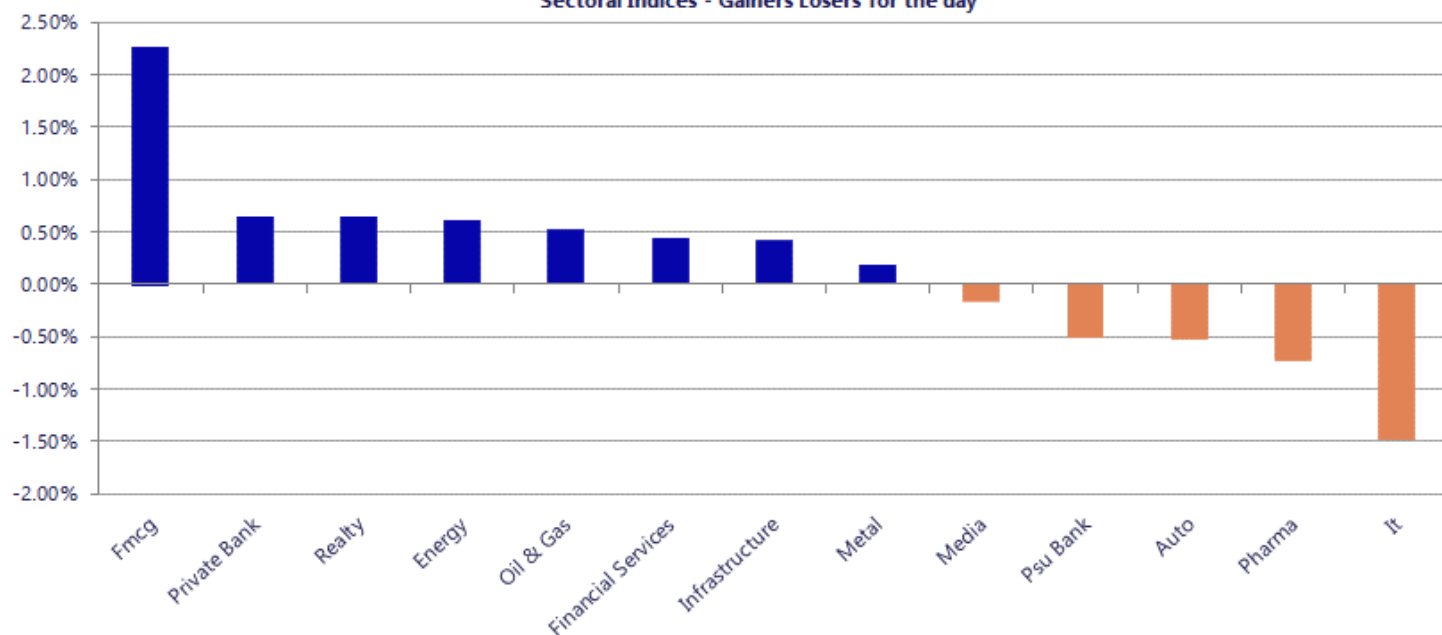
Breakouts - Cross above 200 DMA			
Company Name	LCP	Change %	200 DMA
Loyal Textiles	312.83	14.34	273.59
Godavari Bioref	276.4	6.48	259.59
HVAX Technologi	810	3.53	782.39
Modison	158.49	2.56	154.54
LIC India	899	1.78	883.27
Kabra Extrusion	261	1.75	256.51
Sai Life Sci	847	1.60	833.67
Nandani Creatio	39	1.59	38.39
Goldiam Inter	368	1.43	362.8
Campus	273	1.17	269.83
UFO Moviez	75.89	1.17	75.01
Manaksia Steels	62.5	0.92	61.93
Sobha	1512.2	0.90	1498.76
B&B Triplewall	188	0.81	186.49
Mason Infratech	180	0.68	178.78
Inspirisys Solu	96.4	0.65	95.78
Krishana Phosch	493	0.64	489.87
Mamata Machiner	429	0.57	426.56

\* Stocks crossing above its Simple Moving Average (200DMA)

Breakdown - Cross below 200 DMA			
Company Name	LCP	Change %	200 DMA
Ushanti Colour	52.55	-8.81	57.63
NK Industries	64.37	-4.86	67.66
Wanbury	245.27	-3.80	254.97
Talbro's Auto	273.55	-2.68	281.09
Harsha Engineer	384.55	-2.56	394.67
Gabriel India	954.05	-2.51	978.64
Shah Alloys	63.49	-2.37	65.03
REC	372.5	-2.27	381.15
Garuda Const	167.19	-2.16	170.88
Esprit Stones	86.8	-2.04	88.61
KIOCL	352.5	-2.02	359.76
Gokul Agro	161.17	-1.95	164.37
SIS	341.1	-1.90	347.69
Sportking India	102.01	-1.89	103.97
Balaji Phosphat	139.3	-1.76	141.79
Moschip Tech	198.14	-1.58	201.32
Raghav Producti	742.6	-1.46	753.64
Dalmia Bharat	2118.3	-1.34	2147.09

\* Stocks crossing below its Simple Moving Average (200DMA)

Sectoral Indices - Gainers Losers for the day



Stocks witnessing a volume surge as compared to their 5 day average

Watch out for the stocks that have seen a huge spurt in its share price over the last three days

Volume Shockers - NSE					
Company name	LCP	% Chg	Volume	Avg Vol *	% Chg
Tube Investment	2315	-2.76	831521	3488	23742
Apollo Pipes	312.05	17.62	235618	2671	8720
Nazara	260	-6.14	1243245	19281	6348
Brigade Ent	762.4	-1.13	410008	10411	3838
CL Educate	59.08	-19.08	91046	2684	3292
Capri Global	172.3	1.38	1897691	57569	3196
Star Cement	211	-5.21	213912	6507	3188
Ind-Swift Labs	133.2	8.82	754291	24187	3019
Kabra Extrusion	260.95	2.35	106195	4290	2376
Vijaya Diagnost	964.3	-0.63	221367	9134	2323
Ganesh Housing	714	-4.75	27575	1203	2193
Nuvoco Vistas	346.9	-0.54	503985	23832	2015
Indigo Paints	1007.75	-0.37	33201	1631	1936
Finolex Ind	171.7	-2.05	494204	24401	1925
Godfrey Phillip	2185	10.24	470857	23441	1909
LIC India	899.95	7.08	1765592	90052	1861
APL Apollo	2200	0.87	517972	27224	1803
Bajaj Holdings	10985.65	0.74	46564	2510	1755
Talbro's Auto	271.6	-3.76	79423	4321	1738
Medplus Health	864.3	0.23	99262	5536	1693
Kirloskar Bros	1599.8	3.63	83910	4744	1669

Price Shockers - NSE				
Company name	LCP	Prv Close	% Chg	Volume
Loyal Textiles	304.8	192.55	58.3	3970
Stratmont Indus	90.01	56.96	58.02	87078
Genus Prime Inf	32.14	23.13	38.95	122201
VTM	85.5	65.8	29.94	737302
B2B Software	56.37	44.67	26.19	131769
Garnet Construc	85.9	68.59	25.24	77514
Ujaas Energy	176.9	141.55	24.97	16632
Gorani Ind	63.61	51.51	23.49	2678
Prithvi Exc	126.9	102.85	23.38	6960
Cenlub	256.9	210.15	22.25	9972
Modis Navnirman	396.7	325.7	21.8	77
IZMO	838.95	688.95	21.77	87828
INDO SMC	181.4	149.6	21.26	252000
Sanjivani Paren	197.05	163.9	20.23	5420
Faze Three	521.9	438	19.16	14283
NGL Fine Chem	2170.4	1823.55	19.02	1265
Kabra Extrusion	260.95	219.75	18.75	106195
DJ Mediaprint	95.47	80.59	18.46	116488
Ind-Swift Labs	133.2	113.4	17.46	754291
YASH INNO	39.3	33.59	17	2203
Chemcrux Enterp	111.6	95.62	16.71	8611

Nifty 50 stocks - Summary Details											
Symbol	LTP	Chng	% Chng	Volume (lacs)	Turnover (crs.)	52w High	Diff with 52w H	52w Low	Diff with 52w L	30 days % chng	365 days % chng
NIFTY 50	25693.70	50.90	0.20%	3754.47	29775.49	26373.20	2.58%	21743.65	18.17%	-2.31%	8.02%
ADANIENT	2219.00	-17.60	-0.79%	9.33	207.29	2616.50	15.19%	1848.00	20.08%	-1.88%	-2.82%
ADANIPTS	1549.50	-20.70	-1.32%	44.29	690.52	1577.70	1.79%	1036.50	49.49%	5.17%	39.56%
APOLLOHOSP	7128.50	6.50	0.09%	6.69	474.54	8099.50	11.99%	6001.00	18.79%	0.55%	4.86%
ASIANPAINT	2405.00	-27.10	-1.11%	10.44	250.62	2985.70	19.45%	2124.75	13.19%	-13.62%	3.30%
AXISBANK	1341.90	11.30	0.85%	58.77	786.07	1418.30	5.39%	978.05	37.20%	3.48%	31.05%
BAJAJ-AUTO	9517.50	-129.50	-1.34%	1.99	189.27	9941.00	4.26%	7089.35	34.25%	1.57%	8.25%
BAJAJFINSV	2020.80	20.70	1.03%	12.57	252.51	2195.00	7.94%	1727.25	17.00%	-1.92%	10.30%
BAJFINANCE	982.00	17.25	1.79%	137.43	1344.12	1102.50	10.93%	802.50	22.37%	-1.43%	-88.62%
BEL	430.00	-2.90	-0.67%	110.75	474.72	461.65	6.86%	240.25	78.98%	4.62%	52.16%
BHARTIARTL	2023.00	30.60	1.54%	138.70	2803.57	2174.50	6.97%	1559.50	29.72%	-5.35%	19.92%
CIPLA	1326.10	-7.20	-0.54%	14.58	193.49	1673.00	20.74%	1281.70	3.46%	-12.27%	-7.99%
COALINDIA	432.00	0.15	0.03%	47.37	203.83	461.55	6.40%	349.25	23.69%	1.03%	14.69%
DRREDDY	1237.60	-7.30	-0.59%	13.25	163.46	1379.70	10.30%	1020.00	21.33%	-0.41%	2.05%
EICHERMOT	7155.00	-54.50	-0.76%	2.52	180.28	7613.50	6.02%	4646.00	54.00%	-3.65%	32.28%
ETERNAL	283.55	-3.30	-1.15%	299.35	849.56	368.45	23.04%	194.80	45.56%	1.79%	#VALUE!
GRASIM	2844.60	-19.30	-0.67%	3.62	102.94	2977.80	4.47%	2301.65	23.59%	0.53%	15.26%
HCLTECH	1592.60	-17.40	-1.08%	33.43	532.31	1780.10	10.53%	1302.75	22.25%	0.15%	-7.07%
HDFCBANK	941.00	-8.70	-0.92%	181.20	1706.36	1020.50	7.79%	830.55	13.30%	-2.84%	-44.81%
HDFCLIFE	703.40	-17.30	-2.40%	41.14	289.34	820.75	14.30%	600.35	17.16%	-5.08%	15.15%
HINDALCO	937.70	2.25	0.24%	38.30	358.24	1029.80	8.94%	546.45	71.60%	0.40%	60.19%
HINDUNILVR	2421.00	66.60	2.83%	14.22	340.77	2750.00	11.96%	2136.00	13.34%	-1.25%	-3.43%
ICICIBANK	1408.00	11.50	0.82%	108.51	1522.06	1500.00	6.13%	1200.10	17.32%	1.82%	10.12%
INDIGO	4901.20	-31.00	-0.63%	4.64	227.35	6232.50	21.36%	4157.85	17.88%	-3.34%	13.51%
INFY	1505.70	-14.50	-0.95%	139.00	2086.12	1924.00	21.74%	1307.00	15.20%	-5.37%	-19.94%
ITC	326.35	16.15	5.21%	680.54	2195.83	455.85	28.41%	302.00	8.06%	-11.30%	-31.85%
JIOFIN	268.00	-1.95	-0.72%	89.38	239.70	338.60	20.85%	198.65	34.91%	-10.14%	10.14%
JSWSTEEL	1236.00	-3.80	-0.31%	9.18	113.03	1245.00	0.72%	905.20	36.54%	4.55%	31.30%
KOTAKBANK	422.35	13.60	3.33%	212.28	887.88	460.38	8.26%	378.78	11.50%	-81.34%	-78.80%
LT	4065.40	2.10	0.05%	16.31	662.53	4195.00	3.09%	2965.30	37.10%	-2.10%	18.15%
M&M	3580.00	8.00	0.22%	14.62	521.15	3839.90	6.77%	2425.00	47.63%	-5.76%	12.01%
MARUTI	14980.00	-79.00	-0.52%	2.76	414.61	17370.00	13.76%	11059.45	35.45%	-12.22%	14.87%
MAXHEALTH	1040.00	-0.80	-0.08%	33.85	348.34	1314.30	20.87%	933.80	11.37%	-0.92%	-11.37%
NESTLEIND	1300.00	3.50	0.27%	8.36	108.09	1340.40	3.01%	1055.00	23.22%	-0.84%	-43.31%
NTPC	363.70	-0.55	-0.15%	73.28	266.18	371.45	2.09%	292.80	24.21%	4.68%	15.01%
ONGC	268.40	-0.80	-0.30%	100.10	267.81	277.77	3.37%	205.00	30.93%	13.07%	5.94%
POWERGRID	292.80	3.45	1.19%	199.49	582.50	322.00	9.07%	247.30	18.40%	6.52%	1.30%
RELIANCE	1451.00	7.60	0.53%	82.77	1194.19	1611.80	9.98%	1114.85	30.15%	-8.54%	12.31%
SBILIFE	1986.80	-31.00	-1.54%	8.84	175.86	2109.60	5.82%	1379.85	43.99%	-2.78%	37.04%
SBIN	1066.00	-7.50	-0.70%	70.41	747.20	1089.80	2.18%	680.00	56.76%	6.76%	37.77%
SHRIRAMFIN	1001.00	9.00	0.91%	32.70	324.60	1041.50	3.89%	525.10	90.63%	-1.13%	72.00%
SUNPHARMA	1694.70	-7.90	-0.46%	12.77	216.48	1851.20	8.45%	1548.00	9.48%	-1.52%	-3.55%
TATACONSUM	1157.20	1.30	0.11%	8.31	95.80	1220.90	5.22%	930.10	24.42%	-2.22%	11.77%
TMPV	368.90	-5.25	-1.40%	231.16	860.76	744.00	50.42%	335.60	9.92%	0.16%	#VALUE!
TATASTEEL	196.51	-1.25	-0.63%	184.46	361.78	202.99	3.19%	125.30	56.83%	6.48%	48.22%
TCS	2940.30	-51.20	-1.71%	46.87	1375.14	4150.00	29.15%	2866.60	2.57%	-6.98%	-27.16%
TECHM	1616.00	-30.20	-1.83%	19.88	321.40	1854.00	12.84%	1209.40	33.62%	3.09%	-0.77%
TITAN	4140.80	43.20	1.05%	8.89	366.31	4312.10	3.97%	2925.00	41.57%	0.44%	13.89%
TRENT	4095.00	-36.30	-0.88%	11.16	457.78	6261.00	34.60%	3645.00	12.35%	-6.74%	-28.16%
ULTRACEMCO	12733.00	-40.00	-0.31%	1.25	158.32	13097.00	2.78%	10047.85	26.72%	5.68%	10.88%
WIPRO	230.40	-2.99	-1.28%	122.77	282.88	323.60	28.80%	226.26	1.83%	-11.36%	-26.20%

## Disclaimer / Disclosures

### ANALYST CERTIFICATION

I, Mrs. Vaishali Parekh B.com, Research Analyst, author and the name subscribed to this report, hereby certify that all of the views expressed in this research report accurately reflect our views about the subject issuer(s) or securities. We also certify that no part of our compensation was, is, or will be directly or indirectly related to the specific recommendation(s) or view(s) in this report.

Terms & conditions and other disclosures:

Prabhudas Lilladher Pvt. Ltd, Mumbai, India (hereinafter referred to as "PL") is engaged in the business of Stock Broking, Portfolio Manager, Depository Participant and distribution for third party financial products. PL is a subsidiary of Prabhudas Lilladher Advisory Services Pvt Ltd. which has its various subsidiaries engaged in business of commodity broking, investment banking, financial services (margin funding) and distribution of third party financial/other products, details in respect of which are available at [www.plindia.com](http://www.plindia.com)

This document has been prepared by the Research Division of PL and is meant for use by the recipient only as information and is not for circulation. This document is not to be reported or copied or made available to others without prior permission of PL. It should not be considered or taken as an offer to sell or a solicitation to buy or sell any security.

The information contained in this report has been obtained from sources that are considered to be reliable. However, PL has not independently verified the accuracy or completeness of the same. Neither PL nor any of its affiliates, its directors or its employees accepts any responsibility of whatsoever nature for the information, statements and opinion given, made available or expressed herein or for any omission therein.

Recipients of this report should be aware that past performance is not necessarily a guide to future performance and value of investments can go down as well. The suitability or otherwise of any investments will depend upon the recipient's particular circumstances and, in case of doubt, advice should be sought from an independent expert/advisor.

Either PL or its affiliates or its directors or its employees or its representatives or its clients or their relatives may have position(s), make market, act as principal or engage in transactions of securities of companies referred to in this report and they may have used the research material prior to publication.

PL may from time to time solicit or perform investment banking or other services for any company mentioned in this document.

PL is registered as Research Analyst under Securities and Exchange Board of India (Research Analysts) Regulations, 2014 PL submits that no material disciplinary action has been taken on us by any Regulatory Authority impacting Equity Research Analysis activities.

PL or its research analysts or its associates or his relatives do not have any financial interest in the subject company.

PL or its research analysts or its associates or his relatives do not have actual/beneficial ownership of one per cent or more securities of the subject company at the end of the month immediately preceding the date of publication of the research report.

PL or its research analysts or its associates or his relatives do not have any material conflict of interest at the time of publication of the research report.

PL or its associates might have received compensation from the subject company in the past twelve months.

PL or its associates might have managed or co-managed public offering of securities for the subject company in the past twelve months or mandated by the subject company for any other assignment in the past twelve months.

PL or its associates might have received any compensation for investment banking or merchant banking or brokerage services from the subject company in the past twelve months.

PL or its associates might have received any compensation for products or services other than investment banking or merchant banking or brokerage services from the subject company in the past twelve months PL or its associates might have received any compensation or other benefits from the subject company or third party in connection with the research report.

PL encourages independence in research report preparation and strives to minimize conflict in preparation of research report. PL or its analysts did not receive any compensation or other benefits from the subject Company or third party in connection with the preparation of the research report. PL or its Research Analysts do not have any material conflict of interest at the time of publication of this report.

It is confirmed that Mrs. Vaishali Parekh B.com, Research Analyst of this report has not received any compensation from the companies mentioned in the report in the preceding twelve months compensation of our Research Analysts is not based on any specific merchant banking, investment banking or brokerage service transactions.

The Research analysts for this report certifies that all of the views expressed in this report accurately reflect his or her personal views about the subject company or companies and its or their securities, and no part of his or her compensation was, is or will be, directly or indirectly related to specific recommendations or views expressed in this report.

The research analysts for this report has not served as an officer, director or employee of the subject company PL or its research analysts have not engaged in market making activity for the subject company

Our sales people, traders, and other professionals or affiliates may provide oral or written market commentary or trading strategies to our clients that reflect opinions that are contrary to the opinions expressed herein, and our proprietary trading and investing businesses may make investment decisions that are inconsistent with the recommendations expressed herein. In reviewing these materials, you should be aware that any or all of the foregoing, among other things, may give rise to real or potential conflicts of interest.

PL and its associates, their directors and employees may (a) from time to time, have a long or short position in, and buy or sell the securities of the subject company or (b) be engaged in any other transaction involving such securities and earn brokerage or other compensation or act as a market maker in the financial instruments of the subject company or act as an advisor or lender/borrower to the subject company or may have any other potential conflict of interests with respect to any recommendation and other related information and opinions.

**Regd. Office:** 3<sup>rd</sup> Floor, Sadhana House, 570, P. B. Marg, Behind Mahindra Tower, Worli, Mumbai - 400 018, India.