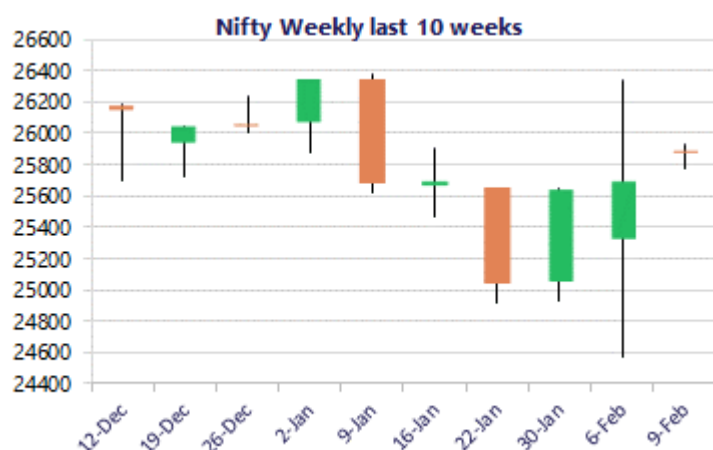
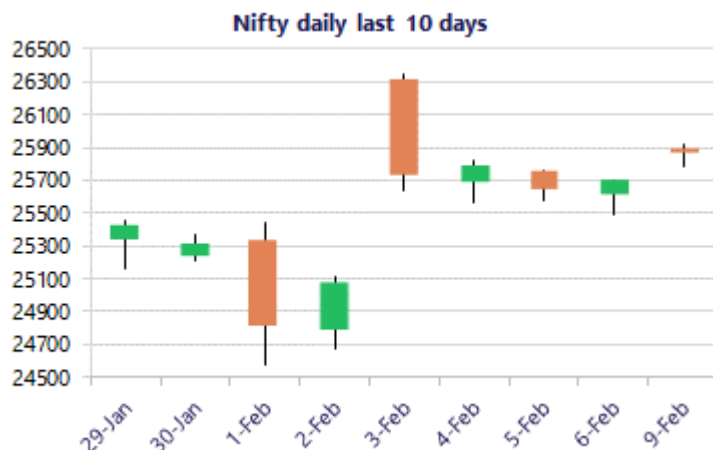


Date: 10th February 2026

* Sensex 84065.75 + 485.35

* Nifty 25867.30 + 173.60

* Bank Nifty 60669.35 + 548.80



*Blue candle → Close rate > Open rate * Red candle → Close rate < Open rate

Market Preview

Nifty surges ahead; gains strength

Nifty opening on a strong note near the 25900 zone has once again gained strength to anticipate for further rise in the coming days with targets of 26000 and 26350 levels expected. BankNifty witnessed a positive opening with a gap up and maintained the bias for rest part of the session with anticipation of further upward move expected in the coming days. The market breadth was strong with the advance decline indicating a ratio of 3:1 at close.

Market Forecast

Nifty daily range 25700-26100

Nifty, witnessed a gap up opening near the 25900 zone and remained rangebound with bias maintained strong, with active participation witnessed from the broader markets to support the benchmark index and anticipating for further rise in the coming days. The index would have the near-term support near the 100 period MA at 25500 zone and on the upside, with overall bias and trend maintained with an optimistic approach, can retest the previous peak zone near the 26350 levels in the coming days.

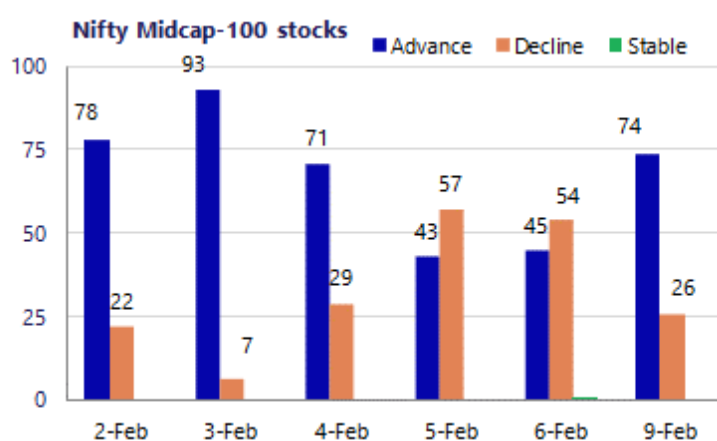
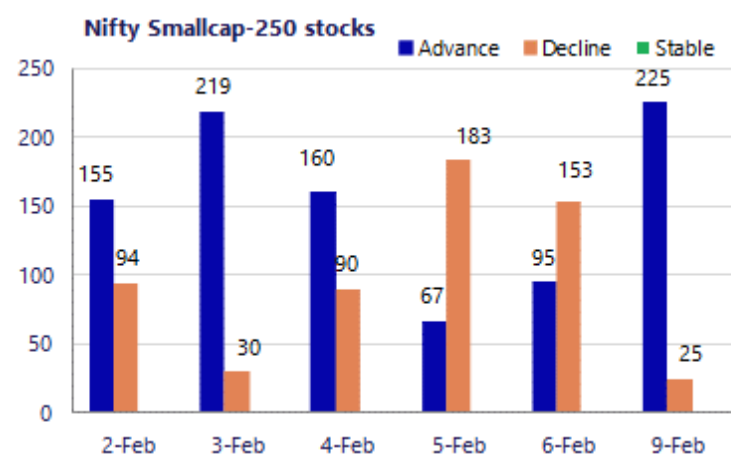
BankNifty opened on a strong note near the 60800 zone with SBI leading from the front and PSU Banks also showing active participation to improve the overall sentiment expecting for further gains in the coming days. On the downside, the index would have the important near-term support at 59500 zone which needs to be sustained and, on the upside, can retest the recent peak zone near 61800 levels with most of the frontline banking stocks poised for further gains.

The support for the day is seen at 25700 levels, while the resistance is seen at 26100 levels. BankNifty would have the daily range of 60000-61400 levels.

Sensex	Period	Closing	% Chng	Trend	Reversal	2 Sup	1 Sup	Pivot	1 Res	2 Res
Nifty	Daily	25867.30	0.68%	6	25513.35	25715	25791	25857	25933	25998
	Weekly	25693.70	1.47%	-5	25756.60	23766	24730	25536	26499	27305
	Monthly	25320.65	-3.10%	-1	25950.25	24084	24703	25538	26156	26991
Bank Nifty	Daily	60669.35	0.91%	5	59913.70	60300	60485	60680	60865	61061
	Weekly	60120.55	0.86%	-5	60300.50	55908	58014	59890	61996	63871
	Monthly	59610.45	0.05%	4	58708.15	57085	58348	59393	60655	61700
Sensex	Daily	84065.75	0.58%	6	82927.95	83626	83846	84080	84300	84535
	Weekly	83580.40	1.59%	-5	83721.30	77145	80363	83117	86335	89089
	Monthly	82269.78	-3.46%	-1	84767.90	78295	80283	83083	85070	87870

Gainers - Losers (Nifty 500 Stocks)

Gainers				Losers			
Company Name	Last Price	% Gain	Volume	Company Name	Last Price	% Loss	Volume
BEML	1761.2	8.89%	1019997	Concord Biotech	1,272.20	-4.14%	686493
Aditya Birla F	74.27	7.92%	15607424	Caplin Labs	1758.4	-3.69%	195501
BASF	3925.7	7.60%	47746	Bosch	35,630.00	-1.95%	31214
Carborundum	830.00	7.60%	453908	Britannia	5,843.00	-1.15%	331092
CG Consumer	262.92	7.30%	8978256	Authum Invest	499.50	-1.13%	343493
Aarti Ind	470.40	6.68%	3344817	CRISIL	4701.4	-1.13%	27634
Amber Enterpris	7,048.00	6.14%	549238	Berger Paints	467.15	-1.11%	748809





BankNifty Daily chart with RSI indicator



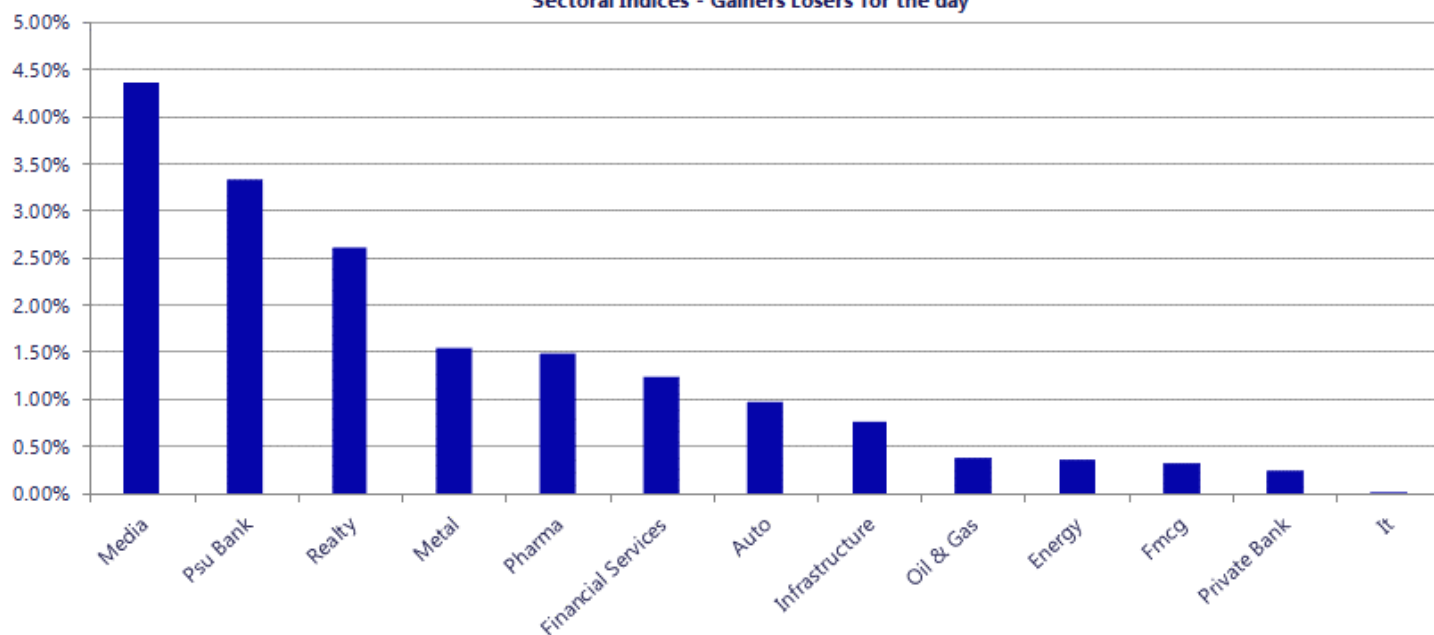
Breakouts - Cross above 200 DMA			
Company Name	LCP	Change %	200 DMA
Jay BharatMarut	101.22	18.84	85.17
Vaibhav Global	258.99	9.92	235.62
Sportking India	113.53	9.14	104.02
McLeod	46.03	9.05	42.21
Shaily Engg	2228	8.55	2052.5
Sky Gold	349.65	8.32	322.79
Nandani Creatio	41.13	7.25	38.35
Lexus Granito	31.95	7.07	29.84
Gokul Agro	175.36	6.58	164.54
Shivalik Bimeta	516	6.11	486.27
Atul Auto	485.05	4.94	462.23
Garuda Const	179.34	4.78	171.16
Fiberweb India	45.31	4.74	43.26
Bafna Pharma	121.8	4.62	116.42
Edelweiss	111.26	4.37	106.6
Senco Gold	355.3	4.03	341.52
Poonawalla Fin	465.85	3.87	448.48
India Glycols	964.75	3.73	930.06

* Stocks crossing above its Simple Moving Average (200DMA)

Breakdown - Cross below 200 DMA			
Company Name	LCP	Change %	200 DMA
The Western Ind	149.33	-4.81	156.88
Mason Infratech	174.5	-2.61	179.18
Mirae NYSEFANG	153.26	-2.34	156.94
Venkys	1489.7	-2.11	1521.79
Bosch	35630	-1.64	36224.4
Kabra Extrusion	252.95	-1.33	256.36
Purple United	380.6	-1.30	385.63
Salona Cotspin	253.32	-1.08	256.08
Siemens	3109	-0.98	3139.75
ICICI Bank	1396.3	-0.65	1405.37
UTI NIF10GETF	25.87	-0.35	25.96
CreditAccess Gr	1282.3	-0.34	1286.62
SBI ETF	258.09	-0.08	258.29
Suprajit Eng	449.65	-0.06	449.9

* Stocks crossing below its Simple Moving Average (200DMA)

Sectoral Indices - Gainers Losers for the day



Stocks witnessing a volume surge as compared to their 5 day average

Watch out for the stocks that have seen a huge spurt in its share price over the last three days

Volume Shockers - NSE					
Company name	LCP	% Chg	Volume	Avg Vol *	% Chg
Lloyds Steels	54.11	5.77	106527327	301346	35250
YASH INNO	40.74	3.69	402313	1866	21460
Ram Ratna Wires	326.5	10.06	217593	1391	15538
Mahindra Holida	308	4.8	311076	5098	6002
TV TodayNetwork	124.45	1.14	149251	3318	4399
Ganesha Ecosph	821.6	19.99	104463	2859	3554
Jana SFB	403	14.95	708540	21271	3231
Ipca Labs	1454.95	2.16	405743	12196	3227
Shipping Corp	266	19.98	4263496	129739	3186
Orient Beverage	221.85	19.98	35465	1086	3167
AU Small Financ	1002.2	1.17	989784	32280	2966
Jay BharatMarut	100.9	19.99	269146	10777	2397
SG MART	406.95	10.89	513634	21198	2323
Medplus Health	869.2	0.2	580895	23993	2321
Brooks Labs	68	11.29	109111	4537	2305
Tata Comm	1575.5	1.55	307405	12835	2295
Rolex	127.9	2.12	1156761	48736	2274
National Plasti	53.96	11.42	24635	1065	2213
Porwal Auto	65	13.6	69821	3048	2191
Intl Combustion	495	-10.78	28275	1274	2120
Divis Labs	6135.05	1.83	146788	6793	2061

Price Shockers - NSE				
Company name	LCP	Prv Close	% Chg	Volume
Loyal Textiles	307.95	211.7	45.47	3815
VTM	99.5	69.09	44.02	486288
Garnet Construc	97.57	70.91	37.6	141473
Somi Conveyor	120.16	87.51	37.31	10154
Gorani Ind	76.33	56.34	35.48	11294
Stratmont Indus	84.51	62.51	35.19	39829
Ujaas Energy	194.55	148.6	30.92	6765
Saffron Ind	34.5	26.46	30.39	19160
Rama Vision	152	121.6	25	20624
Apollo Pipes	331.7	269.85	22.92	176462
Triton Valves	3381	2753.9	22.77	1874
Orient Beverage	221.85	181.45	22.27	35465
Pee Cee Cosma	397	324.8	22.23	7688
BCC Fuba	176.55	147.45	19.74	30619
GTV Engineering	60.88	50.85	19.72	169783
Dolphin Kitchen	37	30.99	19.39	32000
Tainwala Chem	204.3	172	18.78	42137
Bazel Internati	66.99	56.53	18.5	45885
Gyan Developers	41	34.7	18.16	618
Shipping Corp	266	225.95	17.73	4263496
Hipolin	63.45	54.05	17.39	1086

Nifty 50 stocks - Summary Details											
Symbol	LTP	Chng	% Chng	Volume (lacs)	Turnover (crs.)	52w High	Diff with 52w H	52w Low	Diff with 52w L	30 days % chng	365 days % chng
NIFTY 50	25867.30	173.60	0.68%	3592.75	28442.01	26373.20	1.92%	21743.65	18.96%	-1.85%	8.43%
ADANIENT	2250.40	24.00	1.08%	16.51	373.31	2616.50	13.99%	1848.00	21.77%	-1.45%	-4.22%
ADANIPTS	1557.00	6.30	0.41%	17.61	275.40	1583.90	1.70%	1036.50	50.22%	5.26%	35.51%
APOLLOHOSP	7220.00	67.50	0.94%	4.12	297.86	8099.50	10.86%	6001.00	20.31%	-2.66%	2.99%
ASIANPAINT	2416.50	15.40	0.64%	6.70	161.54	2985.70	19.06%	2124.75	13.73%	-15.63%	5.53%
AXISBANK	1341.00	-0.60	-0.04%	40.77	546.61	1418.30	5.45%	978.05	37.11%	3.69%	32.40%
BAJAJ-AUTO	9580.00	61.50	0.65%	1.71	163.72	9941.00	3.63%	7089.35	35.13%	-1.48%	6.62%
BAJAJFINSV	2025.10	0.90	0.04%	4.31	87.26	2195.00	7.74%	1727.25	17.24%	-1.00%	12.66%
BAJFINANCE	981.20	-0.50	-0.05%	48.52	475.43	1102.50	11.00%	802.50	22.27%	0.45%	-88.46%
BEL	437.00	7.35	1.71%	121.57	530.89	461.65	5.34%	240.25	81.89%	4.01%	48.69%
BHARTIARTL	2038.20	-0.20	-0.01%	75.70	1546.53	2174.50	6.27%	1559.50	30.70%	-3.18%	22.76%
CIPLA	1348.00	18.00	1.35%	19.37	258.63	1673.00	19.43%	1281.70	5.17%	-13.12%	-7.43%
COALINDIA	431.45	-1.35	-0.31%	45.11	194.71	461.55	6.52%	349.25	23.54%	1.35%	13.05%
DRREDDY	1276.00	34.80	2.80%	21.11	267.43	1379.70	7.52%	1020.00	25.10%	-1.19%	1.11%
EICHERMOT	7209.00	31.50	0.44%	3.14	225.33	7613.50	5.31%	4646.00	55.17%	-4.59%	32.49%
ETERNAL	288.70	5.15	1.82%	188.11	540.71	368.45	21.64%	194.80	48.20%	1.61%	#VALUE!
GRASIM	2925.00	88.10	3.11%	6.82	197.95	2977.80	1.77%	2301.65	27.08%	-0.99%	13.93%
HCLTECH	1595.10	1.40	0.09%	18.62	298.25	1780.10	10.39%	1302.75	22.44%	-1.40%	-6.96%
HDFCBANK	938.80	-2.30	-0.24%	239.46	2246.78	1020.50	8.01%	830.55	13.03%	-2.19%	-45.85%
HDFCLIFE	707.30	3.80	0.54%	40.93	289.48	820.75	13.82%	600.35	17.81%	-9.56%	12.05%
HINDALCO	963.60	21.05	2.23%	52.94	509.06	1029.80	6.43%	546.45	76.34%	0.03%	56.93%
HINDUNILVR	2430.00	5.80	0.24%	9.56	231.78	2750.00	11.64%	2136.00	13.76%	-0.02%	1.39%
ICICIBANK	1395.10	-11.00	-0.78%	78.88	1101.55	1500.00	6.99%	1200.10	16.25%	-0.36%	10.92%
INDIGO	4952.10	42.70	0.87%	5.39	267.17	6232.50	20.54%	4157.85	19.10%	-1.86%	11.19%
INFY	1497.00	-10.10	-0.67%	82.92	1244.90	1924.00	22.19%	1307.00	14.54%	-6.52%	-20.56%
ITC	322.70	-3.10	-0.95%	200.38	648.54	450.00	28.29%	302.00	6.85%	-4.86%	-27.30%
JIOFIN	269.00	0.90	0.34%	81.99	221.36	338.60	20.56%	198.65	35.41%	-10.20%	7.32%
JSWSTEEL	1244.00	7.80	0.63%	15.03	187.03	1254.70	0.85%	905.20	37.43%	5.09%	30.14%
KOTAKBANK	427.75	5.40	1.28%	225.35	965.47	460.38	7.09%	378.78	12.93%	-80.32%	-77.91%
LT	4109.00	40.90	1.01%	18.30	751.89	4195.00	2.05%	2965.30	38.57%	-1.75%	20.24%
M&M	3616.00	38.00	1.06%	12.94	466.24	3839.90	5.83%	2425.00	49.11%	-5.48%	12.56%
MARUTI	14980.00	-17.00	-0.11%	2.00	299.70	17370.00	13.76%	11059.45	35.45%	-13.27%	14.60%
MAXHEALTH	1010.50	-29.35	-2.82%	32.35	329.76	1314.30	23.11%	933.80	8.21%	-1.12%	-11.10%
NESTLEIND	1296.00	-7.30	-0.56%	7.46	96.70	1340.40	3.31%	1055.00	22.84%	-1.26%	-42.05%
NTPC	361.20	-3.85	-1.05%	79.82	290.81	371.45	2.76%	292.80	23.36%	4.06%	14.22%
ONGC	266.70	-2.25	-0.84%	108.23	289.26	277.77	3.99%	205.00	30.10%	11.19%	2.79%
POWERGRID	289.35	-0.15	-0.05%	131.13	379.78	322.00	10.14%	247.30	17.00%	9.01%	2.65%
RELIANCE	1461.20	10.40	0.72%	57.73	844.19	1611.80	9.34%	1114.85	31.07%	-3.77%	13.50%
SBILIFE	2026.00	29.30	1.47%	12.67	256.26	2109.60	3.96%	1379.85	46.83%	-4.73%	35.91%
SBIN	1147.80	81.40	7.63%	408.40	4633.17	1150.00	0.19%	680.00	68.79%	4.66%	39.21%
SHRIRAMFIN	1063.00	60.50	6.03%	86.65	902.20	1067.80	0.45%	525.10	102.44%	-0.01%	75.48%
SUNPHARMA	1706.00	10.90	0.64%	26.47	452.00	1851.20	7.84%	1548.00	10.21%	-3.70%	-3.29%
TATACONSUM	1163.20	3.90	0.34%	11.05	128.66	1220.90	4.73%	930.10	25.06%	-4.22%	14.18%
TMPV	377.60	8.10	2.19%	87.98	331.05	744.00	49.25%	335.60	12.51%	0.16%	#VALUE!
TATASTEEL	201.36	4.30	2.18%	689.53	1391.48	206.34	2.41%	125.30	60.70%	5.83%	46.62%
TCS	2951.00	9.40	0.32%	23.79	701.70	4139.50	28.71%	2866.60	2.94%	-9.65%	-28.10%
TECHM	1619.00	-0.90	-0.06%	9.33	151.41	1854.00	12.68%	1209.40	33.87%	1.13%	-2.47%
TITAN	4267.00	126.00	3.04%	10.92	461.30	4312.10	1.05%	2925.00	45.88%	0.71%	18.62%
TRENT	4158.10	44.30	1.08%	9.95	415.38	6261.00	33.59%	3645.00	14.08%	1.64%	-28.46%
ULTRACEMCO	13051.00	329.00	2.59%	2.35	304.55	13097.00	0.35%	10047.85	29.89%	4.24%	9.81%
WIPRO	230.10	-0.62	-0.27%	91.05	209.87	323.60	28.89%	226.26	1.70%	-13.13%	-27.24%

Disclaimer / Disclosures

ANALYST CERTIFICATION

I, Mrs. Vaishali Parekh B.com, Research Analyst, author and the name subscribed to this report, hereby certify that all of the views expressed in this research report accurately reflect our views about the subject issuer(s) or securities. We also certify that no part of our compensation was, is, or will be directly or indirectly related to the specific recommendation(s) or view(s) in this report.

Terms & conditions and other disclosures:

Prabhudas Lilladher Pvt. Ltd, Mumbai, India (hereinafter referred to as "PL") is engaged in the business of Stock Broking, Portfolio Manager, Depository Participant and distribution for third party financial products. PL is a subsidiary of Prabhudas Lilladher Advisory Services Pvt Ltd. which has its various subsidiaries engaged in business of commodity broking, investment banking, financial services (margin funding) and distribution of third party financial/other products, details in respect of which are available at www.plindia.com

This document has been prepared by the Research Division of PL and is meant for use by the recipient only as information and is not for circulation. This document is not to be reported or copied or made available to others without prior permission of PL. It should not be considered or taken as an offer to sell or a solicitation to buy or sell any security.

The information contained in this report has been obtained from sources that are considered to be reliable. However, PL has not independently verified the accuracy or completeness of the same. Neither PL nor any of its affiliates, its directors or its employees accepts any responsibility of whatsoever nature for the information, statements and opinion given, made available or expressed herein or for any omission therein.

Recipients of this report should be aware that past performance is not necessarily a guide to future performance and value of investments can go down as well. The suitability or otherwise of any investments will depend upon the recipient's particular circumstances and, in case of doubt, advice should be sought from an independent expert/advisor.

Either PL or its affiliates or its directors or its employees or its representatives or its clients or their relatives may have position(s), make market, act as principal or engage in transactions of securities of companies referred to in this report and they may have used the research material prior to publication.

PL may from time to time solicit or perform investment banking or other services for any company mentioned in this document.

PL is registered as Research Analyst under Securities and Exchange Board of India (Research Analysts) Regulations, 2014 PL submits that no material disciplinary action has been taken on us by any Regulatory Authority impacting Equity Research Analysis activities.

PL or its research analysts or its associates or his relatives do not have any financial interest in the subject company.

PL or its research analysts or its associates or his relatives do not have actual/beneficial ownership of one per cent or more securities of the subject company at the end of the month immediately preceding the date of publication of the research report.

PL or its research analysts or its associates or his relatives do not have any material conflict of interest at the time of publication of the research report.

PL or its associates might have received compensation from the subject company in the past twelve months.

PL or its associates might have managed or co-managed public offering of securities for the subject company in the past twelve months or mandated by the subject company for any other assignment in the past twelve months.

PL or its associates might have received any compensation for investment banking or merchant banking or brokerage services from the subject company in the past twelve months.

PL or its associates might have received any compensation for products or services other than investment banking or merchant banking or brokerage services from the subject company in the past twelve months PL or its associates might have received any compensation or other benefits from the subject company or third party in connection with the research report.

PL encourages independence in research report preparation and strives to minimize conflict in preparation of research report. PL or its analysts did not receive any compensation or other benefits from the subject Company or third party in connection with the preparation of the research report. PL or its Research Analysts do not have any material conflict of interest at the time of publication of this report.

It is confirmed that Mrs. Vaishali Parekh B.com, Research Analyst of this report has not received any compensation from the companies mentioned in the report in the preceding twelve months compensation of our Research Analysts is not based on any specific merchant banking, investment banking or brokerage service transactions.

The Research analysts for this report certifies that all of the views expressed in this report accurately reflect his or her personal views about the subject company or companies and its or their securities, and no part of his or her compensation was, is or will be, directly or indirectly related to specific recommendations or views expressed in this report.

The research analysts for this report has not served as an officer, director or employee of the subject company PL or its research analysts have not engaged in market making activity for the subject company

Our sales people, traders, and other professionals or affiliates may provide oral or written market commentary or trading strategies to our clients that reflect opinions that are contrary to the opinions expressed herein, and our proprietary trading and investing businesses may make investment decisions that are inconsistent with the recommendations expressed herein. In reviewing these materials, you should be aware that any or all of the foregoing, among other things, may give rise to real or potential conflicts of interest.

PL and its associates, their directors and employees may (a) from time to time, have a long or short position in, and buy or sell the securities of the subject company or (b) be engaged in any other transaction involving such securities and earn brokerage or other compensation or act as a market maker in the financial instruments of the subject company or act as an advisor or lender/borrower to the subject company or may have any other potential conflict of interests with respect to any recommendation and other related information and opinions.

Regd. Office: 3rd Floor, Sadhana House, 570, P. B. Marg, Behind Mahindra Tower, Worli, Mumbai - 400 018, India.