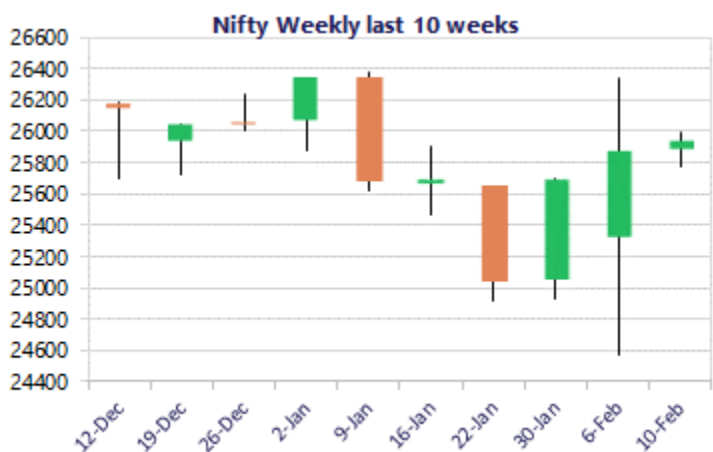
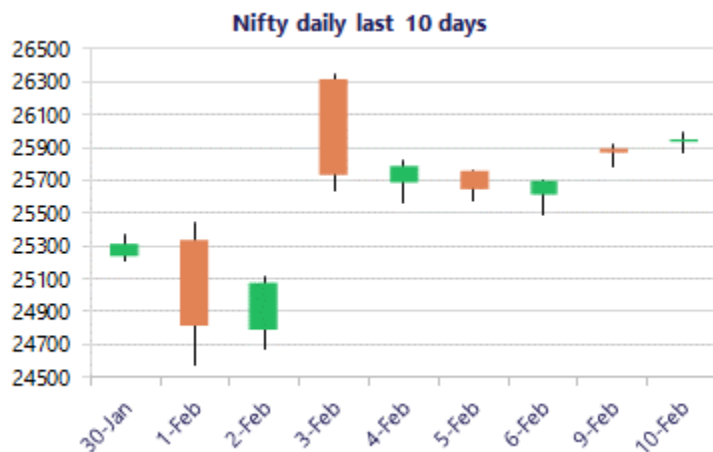


Date: 10<sup>th</sup> February 2026

\* Sensex 84273.92 +208.17

\* Nifty 25935.15 + 67.85

\* Bank Nifty 60626.40 - 42.95



\*Blue candle → Close rate > Open rate \* Red candle → Close rate < Open rate

## Market Preview

### Nifty extends gains; bias remains optimistic

Nifty witnessed a range-bound movement near the 25900-26000 zone with an overall bias and sentiment maintained with a positive approach for further upward movement in the coming days. Bank Nifty also witnessed consolidation near the 60500 zone with sluggish movement, but sentiment in a much improved scenario is expecting further gains in the near future. The market breadth was strong, with the advance-decline ratio of almost 2:1 at close.

## Market Forecast

### Nifty daily range 25800 - 26100

Nifty, slowly and steadily has headed towards the 26000 zone with bias and sentiment getting better and anticipating for further positive developments in the coming days. The index once confirmed a decisive close above the important and crucial zone of 26000 level shall establish conviction and thereafter, can expect for further rise having targets of 26200 and 26300 level with 25750 maintained as the important support zone.

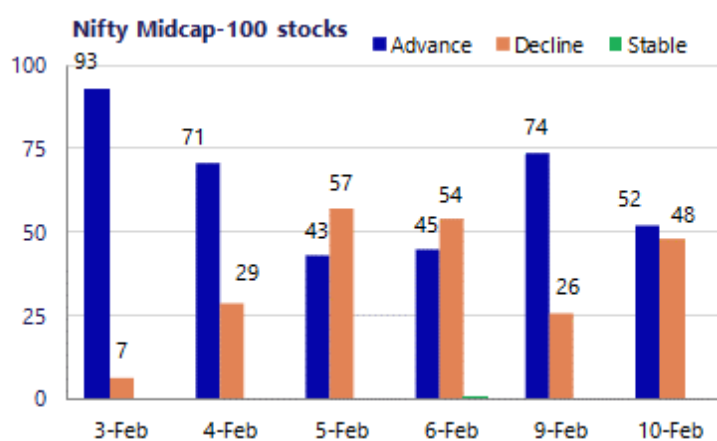
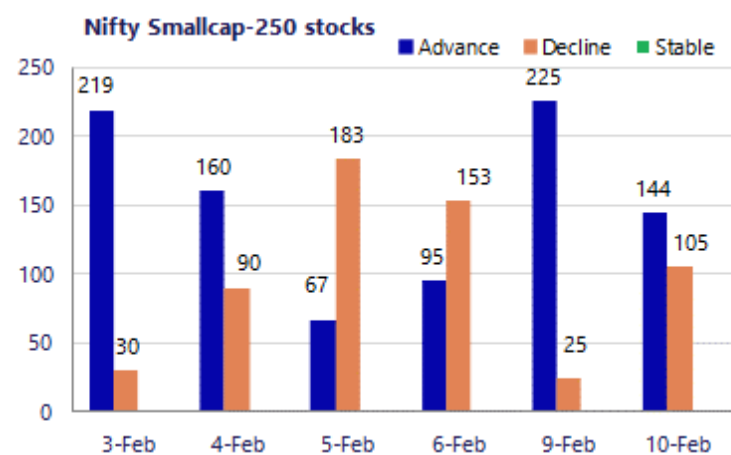
BankNifty continues to oscillate between the narrow range of the 60500 – 60800 zone, and on the downside is supported by the 60000 zone, which needs to be sustained to keep the positive bias intact. A decisive breach above the 60800 level shall trigger a fresh upward move with targets of 61500 and 62000 levels achievable in the coming sessions.

The support for the day is seen at 25800 levels, while the resistance is seen at 26100 levels. Bank Nifty would have the daily range of 60000-61200 levels.

Sensex	Period	Closing	% Chng	Trend	Reversal	2 Sup	1 Sup	Pivot	1 Res	2 Res
Nifty	Daily	25935.15	0.26%	7	25721.10	25813	25874	25932	25993	26051
	Weekly	25693.70	1.47%	-5	25756.60	23766	24730	25536	26499	27305
	Monthly	25320.65	-3.10%	-1	25950.25	24084	24703	25538	26156	26991
Bank Nifty	Daily	60626.40	-0.07%	6	60234.50	60386	60506	60652	60772	60918
	Weekly	60120.55	0.86%	-5	60300.50	55908	58014	59890	61996	63871
	Monthly	59610.45	0.05%	4	58708.15	57085	58348	59393	60655	61700
Sensex	Daily	84273.92	0.25%	7	83612.65	83854	84064	84273	84483	84693
	Weekly	83580.40	1.59%	-5	83721.30	77145	80363	83117	86335	89089
	Monthly	82269.78	-3.46%	-1	84767.90	78295	80283	83083	85070	87870

**Gainers - Losers ( Nifty 500 Stocks )**

Gainers				Losers			
Company Name	Last Price	% Gain	Volume	Company Name	Last Price	% Loss	Volume
BSE Limited	3174.2	6.33%	17809291	Aurobindo Pharm	1,124.10	-6.61%	8584307
Amber Enterpris	7,510.50	6.56%	1658021	eClerx Services	3985	-4.38%	342895
Birlasoft	465.5	4.56%	3974059	Can Fin Homes	915.85	-3.62%	254319
Bata India	918.55	3.88%	2022683	Bharti Hexacom	1,684.00	-2.93%	228760
ACME Solar	236.85	3.87%	1119031	Chola Invest.	1,726.20	-2.49%	1160717
Brainbees Solu	283.45	3.54%	2682806	APTUS VALUE	260.4	-2.29%	1491611
AstraZeneca	8,960.50	3.30%	10901	Berger Paints	458.65	-1.82%	1970816



## Nifty Daily chart with RSI indicator



## BankNifty Daily chart with RSI indicator



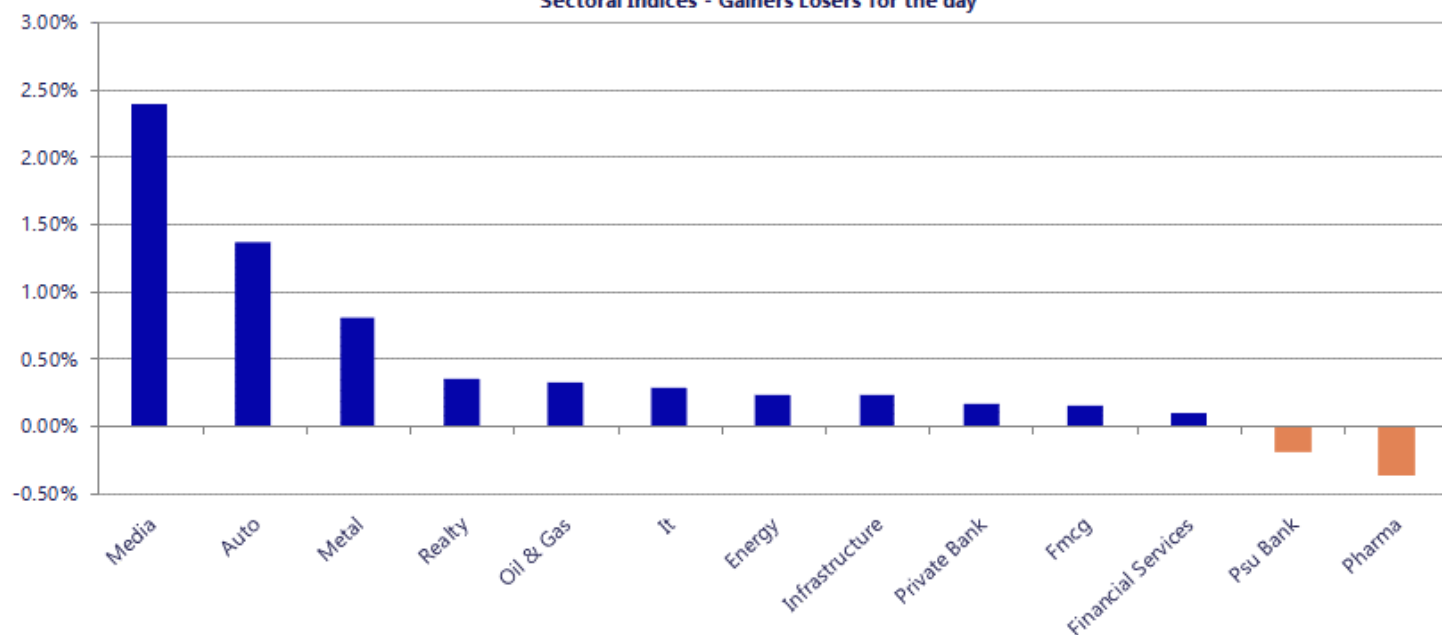
Breakouts - Cross above 200 DMA			
Company Name	LCP	Change %	200 DMA
ABM Inter	52.88	9.28	48.39
Signpost India	246.72	7.20	230.15
Sun TV Network	614.35	6.54	576.63
Amber Enterpris	7510.5	6.02	7084.18
Mukand	136.81	5.40	129.8
Pitti Engineeri	951.65	4.05	914.6
General Insuran	398.35	3.60	384.51
Asian Hotel (E)	150.4	3.13	145.84
PVR INOX	1076.05	2.98	1044.87
Nelcast	129.09	2.81	125.56
Prudent Advisor	2710.2	2.71	2638.8
Linde India	6533	2.63	6365.34
Bandhan Bank	166.69	2.39	162.8
Vesuvius India	521	2.34	509.11
Indian Hume	405	1.81	397.79
Gabriel India	998.75	1.65	982.49
Kanpur Plast	201.6	1.39	198.83
NK Industries	68.44	1.38	67.51

\* Stocks crossing above its Simple Moving Average (200DMA)

Breakdown - Cross below 200 DMA			
Company Name	LCP	Change %	200 DMA
Gokaldas Export	772.75	-6.25	824.25
Abans Financial	204.82	-3.89	213.11
GHCL Textiles	79.61	-2.77	81.88
Aurobindo Pharm	1124.1	-1.99	1146.97
WS Industries	78.75	-1.88	80.26
Donear Ind	98.42	-1.86	100.29
Maxvolt Energy	293.95	-1.79	299.32
LT Foods	413.4	-1.74	420.73
Nitin Spinners	344.7	-1.38	349.51
DDEVPLASTIK	291.35	-1.35	295.33
NAVA	571.85	-1.13	578.38
eClerx Services	3985	-1.07	4028.12
Shree Pushkar	353.25	-0.82	356.18
Moschip Tech	199.91	-0.81	201.54
HCL Tech	1573.1	-0.75	1585.03
Modison	153.6	-0.72	154.72
SRF	2961.9	-0.71	2983.04
Ashiana Housing	301.85	-0.66	303.86

\* Stocks crossing below its Simple Moving Average (200DMA)

Sectoral Indices - Gainers Losers for the day



Stocks witnessing a volume surge as compared to their 5 day average

Watch out for the stocks that have seen a huge spurt in its share price over the last three days

Volume Shockers - NSE					
Company name	LCP	% Chg	Volume	Avg Vol *	% Chg
Praj Industries	336.5	<b>13.86</b>	5034882	39524	12639
JNK India	252.5	<b>0</b>	179906	1670	10672
Vaswani Ind	61.5	<b>8.31</b>	114198	1294	8727
Mold-Tek Pack	591.55	<b>8.39</b>	131431	1710	7587
ISGEC Heavy Eng	926.9	<b>17.56</b>	160121	2959	5311
Stanley Lifesty	193.6	<b>7.77</b>	193598	3769	5036
Systematix Corp	86.2	<b>3.06</b>	606603	12977	4575
Krishna Institu	651	<b>0.71</b>	173797	4103	4136
Sapphire Foods	226	<b>5.63</b>	129217	3102	4066
Route	577.3	<b>-1.56</b>	227155	5788	3824
Edelweiss	121.25	<b>8.94</b>	3095262	105955	2821
Mukand	136.95	<b>6.95</b>	52589	2427	2067
Linde India	6542.25	<b>3.96</b>	32022	1499	2036
Happy Forgings	1150.75	<b>2.04</b>	83132	4470	1760
True Green Bio	70	<b>11.31</b>	71840	4082	1660
Bata India	918.5	<b>3.86</b>	132224	7816	1592
Zodiac Energy	292.35	<b>9.72</b>	19435	1156	1582
Nile	1820	<b>13.87</b>	32941	1998	1549
Krsnaa	701.5	<b>0.31</b>	108533	6725	1514
CHEMPLAST SANMA	307.5	<b>8.73</b>	80391	5224	1439
Modern Eng	33.1	<b>7.26</b>	27449	1793	1431

Price Shockers - NSE					
Company name	LCP	Prv Close	% Chg	Volume	
Orient Beverage	264.8	184.9	<b>43.21</b>	68530	
Race Eco Chain	135	104.25	<b>29.5</b>	2002	
Ganesha Ecosph	857	684.7	<b>25.16</b>	31772	
Kaycee Ind	920.85	736.5	<b>25.03</b>	5082	
Lumax Inds	6159.25	4928.15	<b>24.98</b>	15063	
Jay BharatMarut	104.75	84.09	<b>24.57</b>	282222	
Bazel Internati	71.97	58.58	<b>22.86</b>	38688	
Brooks Labs	74.35	61.1	<b>21.69</b>	55524	
Alfred Herbert	3268.9	2694.6	<b>21.31</b>	854	
Nile	1820	1501.05	<b>21.25</b>	32941	
JITF Infralogis	309.35	255.7	<b>20.98</b>	5500	
Jyoti	85	70.26	<b>20.98</b>	113545	
Umiya Mobile	71.75	59.5	<b>20.59</b>	12000	
ISGEC Heavy Eng	926.9	769.4	<b>20.47</b>	160121	
Shipping Corp	267	221.7	<b>20.43</b>	2242623	
Brahma Infra	152.8	127.8	<b>19.56</b>	114405	
CHEMPLAST SANMA	307.5	257.4	<b>19.46</b>	80391	
Patels Airtemp	250.35	209.6	<b>19.44</b>	34908	
Garnet Construc	100.2	84.11	<b>19.13</b>	158755	
Sterlite Techno	157.6	132.45	<b>18.99</b>	3472330	
Prozone Realty	59	49.61	<b>18.93</b>	116138	



Nifty 50 stocks - Summary Details											
Symbol	LTP	Chng	% Chng	Volume (lacs)	Turnover (crs.)	52w High	Diff with 52w H	52w Low	Diff with 52w L	30 days % chng	365 days % chng
NIFTY 50	25935.15	67.85	0.26%	4608.59	32793.79	26373.20	1.66%	21743.65	19.28%	0.72%	9.79%
ADANIENT	2227.30	-22.80	-1.01%	16.71	371.74	2616.50	14.87%	1848.00	20.52%	4.48%	-3.79%
ADANIPTS	1550.00	-11.70	-0.75%	16.43	255.04	1583.90	2.14%	1036.50	49.54%	8.76%	36.26%
APOLLOHOSP	7216.00	5.00	0.07%	2.77	200.08	8099.50	10.91%	6001.00	20.25%	-0.63%	6.19%
ASIANPAINT	2396.40	-21.00	-0.87%	15.13	362.46	2985.70	19.74%	2124.75	12.79%	-14.44%	6.45%
AXISBANK	1355.10	13.70	1.02%	54.79	742.36	1418.30	4.46%	978.05	38.55%	5.46%	30.98%
BAJAJ-AUTO	9762.00	172.00	1.79%	3.47	339.14	9941.00	1.80%	7089.35	37.70%	0.29%	6.68%
BAJAJFINSV	2023.00	-1.60	-0.08%	7.18	145.39	2195.00	7.84%	1727.25	17.12%	1.62%	12.58%
BAJFINANCE	965.30	-17.85	-1.82%	61.66	596.87	1102.50	12.44%	802.50	20.29%	2.45%	-88.40%
BEL	436.20	-1.10	-0.25%	108.78	475.73	461.65	5.51%	240.25	81.56%	4.45%	57.84%
BHARTIARTL	2011.50	-26.70	-1.31%	90.78	1841.43	2174.50	7.50%	1559.50	28.98%	0.55%	21.56%
CIPLA	1341.10	-1.40	-0.10%	10.53	141.81	1673.00	19.84%	1281.70	4.63%	-8.41%	-8.81%
COALINDIA	430.20	-1.50	-0.35%	51.03	219.72	461.55	6.79%	349.25	23.18%	3.19%	14.13%
DRREDDY	1255.70	-19.80	-1.55%	14.13	178.78	1379.70	8.99%	1020.00	23.11%	5.40%	2.83%
EICHERMOT	7290.50	95.00	1.32%	4.68	340.40	7613.50	4.24%	4646.00	56.92%	-4.15%	33.93%
ETERNAL	303.85	15.00	5.19%	1026.18	3101.23	368.45	17.53%	194.80	55.98%	1.58%	#VALUE!
GRASIM	2960.00	33.70	1.15%	6.25	183.91	2977.80	0.60%	2301.65	28.60%	5.38%	17.64%
HCLTECH	1569.50	-32.50	-2.03%	32.35	513.15	1780.10	11.83%	1302.75	20.48%	-3.58%	-7.17%
HDFCBANK	932.60	-4.65	-0.50%	315.25	2944.24	1020.50	8.61%	830.55	12.29%	-0.19%	-45.91%
HDFCLIFE	703.85	-4.05	-0.57%	23.21	163.86	820.75	14.24%	600.35	17.24%	-5.60%	11.36%
HINDALCO	969.00	4.75	0.49%	41.02	396.87	1029.80	5.90%	546.45	77.33%	7.03%	58.75%
HINDUNILVR	2449.50	14.50	0.60%	7.92	193.86	2750.00	10.93%	2136.00	14.68%	2.63%	3.01%
ICICIBANK	1404.10	7.80	0.56%	164.98	2315.56	1500.00	6.39%	1200.10	17.00%	-0.57%	11.09%
INDIGO	4965.00	0.90	0.02%	11.16	552.34	6232.50	20.34%	4157.85	19.41%	2.48%	13.74%
INFY	1495.00	-2.20	-0.15%	86.56	1299.63	1905.00	21.52%	1307.00	14.38%	-7.24%	-21.35%
ITC	321.25	-1.55	-0.48%	114.87	369.59	444.20	27.68%	302.00	6.37%	-4.26%	-25.08%
JIOFIN	270.60	1.35	0.50%	126.32	343.85	338.60	20.08%	198.65	36.22%	-6.27%	7.94%
JSWSTEEL	1244.00	-1.00	-0.08%	11.51	143.76	1261.90	1.42%	905.20	37.43%	7.44%	26.94%
KOTAKBANK	428.45	-0.35	-0.08%	184.28	794.93	460.38	6.94%	378.78	13.11%	-79.84%	-77.77%
LT	4168.00	54.40	1.32%	18.90	785.85	4195.00	0.64%	2965.30	40.56%	2.20%	23.28%
M&M	3677.00	67.40	1.87%	19.17	702.65	3839.90	4.24%	2425.00	51.63%	-1.84%	12.85%
MARUTI	15136.00	158.00	1.05%	3.60	547.27	17370.00	12.86%	11059.45	36.86%	-9.23%	14.78%
MAXHEALTH	1021.70	11.70	1.16%	44.59	453.43	1314.30	22.26%	933.80	9.41%	-0.71%	-11.65%
NESTLEIND	1307.50	11.90	0.92%	9.36	122.12	1340.40	2.45%	1055.00	23.93%	-0.27%	-41.77%
NTPC	366.55	4.65	1.28%	83.18	304.96	371.45	1.32%	292.80	25.19%	7.71%	14.18%
ONGC	271.60	5.00	1.88%	134.57	364.17	277.77	2.22%	205.00	32.49%	13.89%	7.11%
POWERGRID	293.65	3.90	1.35%	218.23	637.87	322.00	8.80%	247.30	18.74%	12.31%	4.17%
RELIANCE	1456.20	-5.40	-0.37%	102.59	1497.07	1611.80	9.65%	1114.85	30.62%	-0.93%	15.39%
SBILIFE	2022.10	-1.90	-0.09%	5.71	114.96	2109.60	4.15%	1379.85	46.54%	-2.22%	37.60%
SBIN	1142.20	-3.80	-0.33%	172.80	1976.57	1154.00	1.02%	680.00	67.97%	14.54%	55.45%
SHRIRAMFIN	1048.60	-14.10	-1.33%	43.45	455.10	1067.80	1.80%	525.10	99.70%	8.95%	89.92%
SUNPHARMA	1706.00	1.40	0.08%	18.70	319.79	1851.20	7.84%	1548.00	10.21%	-1.46%	-2.58%
TATACONSUM	1153.00	-14.20	-1.22%	9.78	112.93	1220.90	5.56%	930.10	23.97%	-0.74%	14.30%
TMPV	378.60	1.20	0.32%	89.22	339.01	744.00	49.11%	335.60	12.81%	6.57%	#VALUE!
TATASTEEL	207.85	5.85	2.90%	824.42	1712.24	211.10	1.54%	125.30	65.88%	13.23%	46.05%
TCS	2983.00	34.80	1.18%	35.47	1059.02	4052.00	26.38%	2866.60	4.06%	-8.09%	-26.83%
TECHM	1646.00	24.30	1.50%	15.28	251.36	1854.00	11.22%	1209.40	36.10%	2.50%	-4.16%
TITAN	4293.80	36.00	0.85%	17.14	733.75	4329.60	0.83%	2925.00	46.80%	1.33%	24.32%
TRENT	4176.00	4.80	0.12%	6.50	271.57	6261.00	33.30%	3645.00	14.57%	4.99%	-23.53%
ULTRACEMCO	12985.00	-63.00	-0.48%	1.67	217.74	13110.00	0.95%	10047.85	29.23%	9.31%	12.09%
WIPRO	231.29	1.21	0.53%	124.32	286.63	321.00	27.95%	226.26	2.22%	-12.17%	-27.65%

## ANALYST CERTIFICATION

I, Mrs. Vaishali Parekh B.com, Research Analyst, author and the name subscribed to this report, hereby certify that all of the views expressed in this research report accurately reflect our views about the subject issuer(s) or securities. We also certify that no part of our compensation was, is, or will be directly or indirectly related to the specific recommendation(s) or view(s) in this report.

Terms & conditions and other disclosures:

Prabhudas Lilladher Pvt. Ltd, Mumbai, India (hereinafter referred to as "PL") is engaged in the business of Stock Broking, Portfolio Manager, Depository Participant and distribution for third party financial products. PL is a subsidiary of Prabhudas Lilladher Advisory Services Pvt Ltd. which has its various subsidiaries engaged in business of commodity broking, investment banking, financial services (margin funding) and distribution of third party financial/other products, details in respect of which are available at [www.plindia.com](http://www.plindia.com)

This document has been prepared by the Research Division of PL and is meant for use by the recipient only as information and is not for circulation. This document is not to be reported or copied or made available to others without prior permission of PL. It should not be considered or taken as an offer to sell or a solicitation to buy or sell any security.

The information contained in this report has been obtained from sources that are considered to be reliable. However, PL has not independently verified the accuracy or completeness of the same. Neither PL nor any of its affiliates, its directors or its employees accepts any responsibility of whatsoever nature for the information, statements and opinion given, made available or expressed herein or for any omission therein.

Recipients of this report should be aware that past performance is not necessarily a guide to future performance and value of investments can go down as well. The suitability or otherwise of any investments will depend upon the recipient's particular circumstances and, in case of doubt, advice should be sought from an independent expert/advisor.

Either PL or its affiliates or its directors or its employees or its representatives or its clients or their relatives may have position(s), make market, act as principal or engage in transactions of securities of companies referred to in this report and they may have used the research material prior to publication.

PL may from time to time solicit or perform investment banking or other services for any company mentioned in this document.

PL is registered as Research Analyst under Securities and Exchange Board of India (Research Analysts) Regulations, 2014 PL submits that no material disciplinary action has been taken on us by any Regulatory Authority impacting Equity Research Analysis activities.

PL or its research analysts or its associates or his relatives do not have any financial interest in the subject company.

PL or its research analysts or its associates or his relatives do not have actual/beneficial ownership of one per cent or more securities of the subject company at the end of the month immediately preceding the date of publication of the research report.

PL or its research analysts or its associates or his relatives do not have any material conflict of interest at the time of publication of the research report.

PL or its associates might have received compensation from the subject company in the past twelve months.

PL or its associates might have managed or co-managed public offering of securities for the subject company in the past twelve months or mandated by the subject company for any other assignment in the past twelve months.

PL or its associates might have received any compensation for investment banking or merchant banking or brokerage services from the subject company in the past twelve months.

PL or its associates might have received any compensation for products or services other than investment banking or merchant banking or brokerage services from the subject company in the past twelve months PL or its associates might have received any compensation or other benefits from the subject company or third party in connection with the research report.

PL encourages independence in research report preparation and strives to minimize conflict in preparation of research report. PL or its analysts did not receive any compensation or other benefits from the subject Company or third party in connection with the preparation of the research report. PL or its Research Analysts do not have any material conflict of interest at the time of publication of this report.

It is confirmed that Mrs. Vaishali Parekh B.com, Research Analyst of this report has not received any compensation from the companies mentioned in the report in the preceding twelve months compensation of our Research Analysts is not based on any specific merchant banking, investment banking or brokerage service transactions.

The Research analysts for this report certifies that all of the views expressed in this report accurately reflect his or her personal views about the subject company or companies and its or their securities, and no part of his or her compensation was, is or will be, directly or indirectly related to specific recommendations or views expressed in this report.

The research analysts for this report has not served as an officer, director or employee of the subject company PL or its research analysts have not engaged in market making activity for the subject company

Our sales people, traders, and other professionals or affiliates may provide oral or written market commentary or trading strategies to our clients that reflect opinions that are contrary to the opinions expressed herein, and our proprietary trading and investing businesses may make investment decisions that are inconsistent with the recommendations expressed herein. In reviewing these materials, you should be aware that any or all of the foregoing, among other things, may give rise to real or potential conflicts of interest.

PL and its associates, their directors and employees may (a) from time to time, have a long or short position in, and buy or sell the securities of the subject company or (b) be engaged in any other transaction involving such securities and earn brokerage or other compensation or act as a market maker in the financial instruments of the subject company or act as an advisor or lender/borrower to the subject company or may have any other potential conflict of interests with respect to any recommendation and other related information and opinions.

**Regd. Office:** 3<sup>rd</sup> Floor, Sadhana House, 570, P. B. Marg, Behind Mahindra Tower, Worli, Mumbai - 400 018, India.