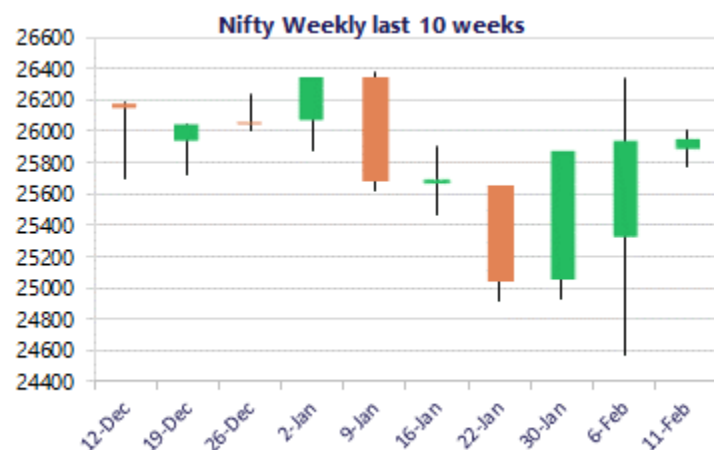
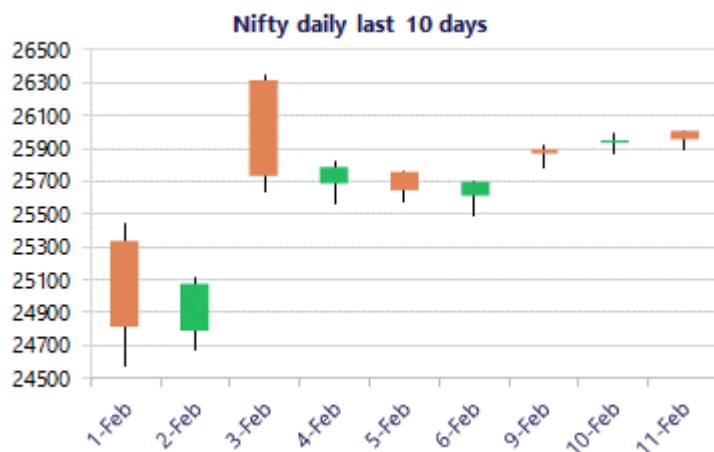


Date: 12<sup>th</sup> February 2026

\* Sensex 84233.64 -40.28

\* Nifty 25953.85 +18.70

\* Bank Nifty 60745.35 +118.95



\*Blue candle → Close rate > Open rate \* Red candle → Close rate < Open rate

## Market Preview

### Nifty consolidates; bias maintained optimistic

Nifty once again witnessed a narrow rangebound movement resisting near the 26000 zone in the opening session and thereafter remained flat for rest part of the day. BankNifty also hovered near the 60700 level with bias maintained positive and expecting for further rise in the coming days. The market breadth was overall flat with the advance decline indicating a neutral ratio at close.

## Market Forecast

### Nifty daily range 25800 - 26100

Nifty, has been consolidating near the 25950 zone with rangebound session visible maintaining the positive bias intact sustaining above the near-term support of the important 50EMA zone at 25680 level which needs to be sustained as of now. With the undertone maintained strong, on the upside, the index would need a decisive breakout above the resistance barrier of 26350 levels to trigger for fresh upward move in the coming days.

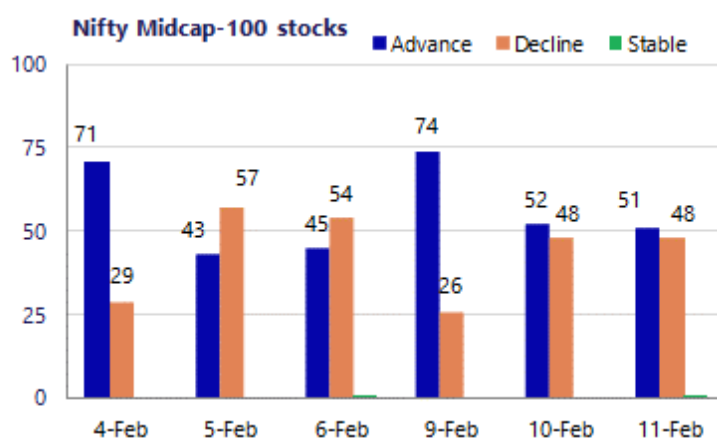
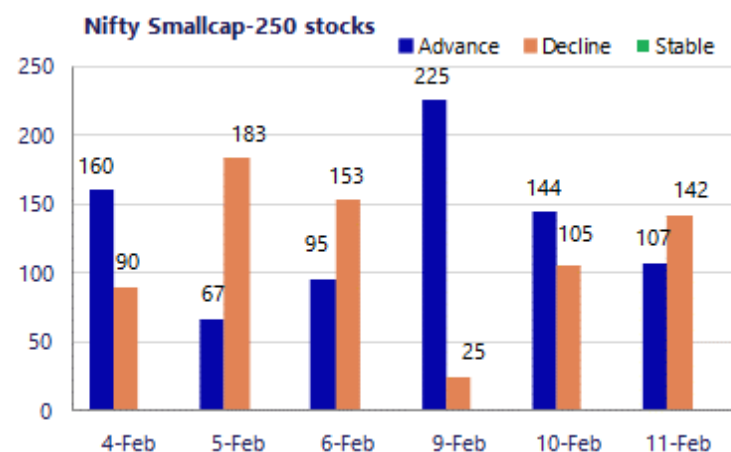
BankNifty since the last 3 sessions has been hovering near the 60700 zone with consolidation visible moving within a narrow range maintaining the positive bias intact and would need a decisive move past the near-term resistance of 60900 level to trigger for fresh rise in the coming days. On the downside, the index would have the important near-term support positioned near the 50EMA at 59400 level which needs to be sustained and expect for further upward movement in the coming days.

The support for the day is seen at 25800 levels, while the resistance is seen at 26100 levels. BankNifty would have the daily range of 60300-61300 levels.

Sensex	Period	Closing	% Chng	Trend	Reversal	2 Sup	1 Sup	Pivot	1 Res	2 Res
Nifty	Daily	25953.85	0.07%	8	25845.45	25845	25899	25954	26009	26064
	Weekly	25693.70	1.47%	-5	25756.60	23766	24730	25536	26499	27305
	Monthly	25320.65	-3.10%	-1	25950.25	24084	24703	25538	26156	26991
Bank Nifty	Daily	60745.35	0.20%	7	60514.10	60321	60533	60657	60869	60992
	Weekly	60120.55	0.86%	-5	60300.50	55908	58014	59890	61996	63871
	Monthly	59610.45	0.05%	4	58708.15	57085	58348	59393	60655	61700
Sensex	Daily	84233.64	-0.05%	8	83974.75	83861	84047	84267	84454	84674
	Weekly	83580.40	1.59%	-5	83721.30	77145	80363	83117	86335	89089
	Monthly	82269.78	-3.46%	-1	84767.90	78295	80283	83083	85070	87870

**Gainers - Losers ( Nifty 500 Stocks )**

Gainers				Losers			
Company Name	Last Price	% Gain	Volume	Company Name	Last Price	% Loss	Volume
Aster DM Health	600.4	4.17%	2781175	BHEL	260.65	-5.60%	83859787
Apollo Hospital	7,507.00	3.99%	1496384	ACME Solar	228.74	-3.42%	799723
Astral Ltd	1592.1	3.91%	1583303	CenturyPlyboard	778.35	-3.02%	1145727
Bharat Forge	1,676.40	3.87%	2361354	Concord Biotech	1,244.80	-2.92%	101939
Bosch	36,570.00	2.80%	24875	Aditya Birla F	70.89	-2.88%	3577027
ABSL AMC	860.85	2.66%	672128	Brainbees Solu	275.4	-2.84%	924576
Bombay Burmah	1,854.20	2.65%	221949	BLS Internation	284.6	-2.80%	2725785



## Nifty Daily chart with RSI indicator



## BankNifty Daily chart with RSI indicator

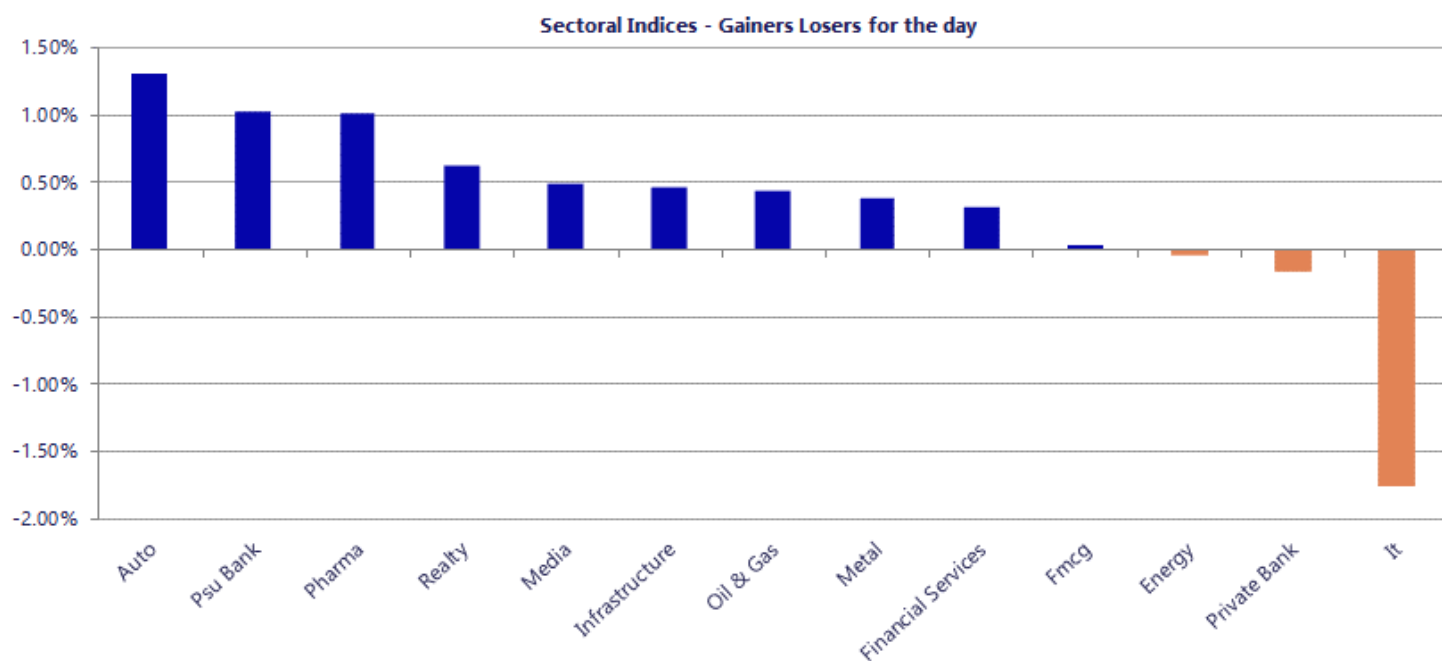


Breakouts - Cross above 200 DMA			
Company Name	LCP	Change %	200 DMA
Ashiana Housing	344.05	13.16	304.04
Man Industries	434.95	11.06	391.62
Rolex	144.78	7.72	134.41
Peria Karamalai	775.05	4.01	745.16
Indo Thai Secu	265.27	2.60	258.54
Apollo Hospital	7507	2.44	7328.32
Pix Transmis	1508.4	2.42	1472.79
Rane Holdings	1501.6	2.39	1466.56
Gulshan Poly	163.7	2.20	160.17
Par Drugs	101.67	2.04	99.64
Orient Bell	291.65	1.79	286.51
Seshasayee Pape	267.48	1.76	262.85
Pfizer	5197.8	1.42	5125.19
Tirupati Forge	38.12	1.30	37.63
JITF Infralogis	339.5	1.22	335.41
Narayana Hruda	1864.6	1.16	1843.15
Azad Eng	1635.1	1.03	1618.43
Gallantt Ispat	580.3	0.92	575

\* Stocks crossing above its Simple Moving Average (200DMA)

Breakdown - Cross below 200 DMA			
Company Name	LCP	Change %	200 DMA
Synergy Green I	458.65	-13.46	529.98
P N Gadgil	563.45	-5.36	595.33
Loyal Textiles	260.71	-4.71	273.59
PTL Enterprises	38.93	-3.71	40.43
Schaeffler Ind	3814.4	-3.49	3952.51
AFL	480.65	-2.66	493.78
Sahasra Electro	286.15	-2.63	293.88
Harsha Engineer	385.8	-2.23	394.58
Mishra Dhatu Ni	369.95	-1.96	377.36
ADF Foods	223.37	-1.90	227.7
AYM Syntex	190.6	-1.88	194.25
Datamatics Glob	779.05	-1.87	793.93
AVT Natural	67.36	-1.82	68.61
VIP Industries	391.05	-1.77	398.08
Crest Ventures	373.85	-1.70	380.31
Tarmat	52.34	-1.64	53.21
Stallion India	167.42	-1.54	170.04
KDDL	2513	-1.35	2547.45

\* Stocks crossing below its Simple Moving Average (200DMA)



Stocks witnessing a volume surge as compared to their 5 day average

Watch out for the stocks that have seen a huge spurt in its share price over the last three days

Volume Shockers - NSE					
Company name	LCP	% Chg	Volume	Avg Vol *	% Chg
CenturyPlyboard	773.3	-3.56	928700	4996	18488
Ashiana Housing	347.85	13.99	740927	5001	14716
Five-Star Busin	437.15	-0.82	1554328	16611	9257
HINDWAREAP	241	-2.11	506143	5621	8904
TVS Supply	121.35	12.53	5135607	82870	6097
Majestic Auto	395	9.71	98381	1738	5562
Man Industries	428.55	13.76	1965716	36642	5265
Craftsman	8130	3.61	53179	1098	4741
Delhivery	431	-1.17	1560076	32308	4729
Aditya Vision	522.5	0.93	384393	8739	4298
Mahindra Life	381.1	-1.75	224474	5941	3679
Coffee Day	31.85	-2.15	1738407	49284	3427
Ather Energy	716.6	-1.44	4184772	127117	3192
EFC	279	3.72	613540	21080	2811
CMS Info	324	-0.03	680008	23495	2794
Kirl Electric	98.98	7.59	310150	10842	2761
Gulshan Poly	163.8	11.81	155905	5903	2541
Eicher Motors	7770	6.49	167582	6642	2423
Info Edge	1168.55	-2.07	1073135	43155	2387
HEG	526.5	-6.18	1521205	61375	2379
Evans Electric	108	-20	87000	4000	2075

Price Shockers - NSE				
Company name	LCP	Prv Close	% Chg	Volume
Orient Beverage	277.7	184.9	50.19	41147
Kaycee Ind	1105	736.5	50.03	12560
JITF Infralogis	340.25	255.7	33.07	9326
Lumax Inds	6487.1	4928.15	31.63	21504
YASH INNO	50.95	39.29	29.68	26420
Nilachal Refra	46.56	35.95	29.51	25176
Brooks Labs	77.08	61.1	26.15	6567
Kavveri Defence	81.5	64.67	26.02	198346
Gulshan Poly	163.8	130	26	155905
Jay BharatMarut	105.5	84.09	25.46	71704
Race Eco Chain	130.5	104.25	25.18	656
Rajasthan Secu	38.1	30.69	24.14	13825
Ganesha Ecosph	836.15	684.7	22.12	7799
CHEMPLAST SANMA	314	257.4	21.99	7308
Garnet Construc	102.45	84.11	21.8	57725
J G Chemicals	402.1	331.4	21.33	35024
Ujaas Energy	214.45	176.9	21.23	10264
Bazel Internati	71	58.58	21.2	37107
RMC Switchgears	502	414.55	21.1	92375
Sarthak Metals	88.2	73	20.82	17663
Signpost India	250.1	207.55	20.5	21949

Nifty 50 stocks - Summary Details											
Symbol	LTP	Chng	% Chng	Volume (lacs)	Turnover (crs.)	52w High	Diff with 52w H	52w Low	Diff with 52w L	30 days % chng	365 days % chng
NIFTY 50	25953.85	18.70	0.07%	3313.25	31449.50	26373.20	1.59%	21743.65	19.36%	0.98%	10.08%
ADANIENT	2230.00	1.60	0.07%	6.82	152.13	2616.50	14.77%	1848.00	20.67%	3.47%	-4.72%
ADANIPTS	1548.20	-6.50	-0.42%	13.59	210.51	1583.90	2.25%	1036.50	49.37%	8.27%	35.65%
APOLLOHOSP	7506.00	287.00	3.98%	14.96	1130.08	8099.50	7.33%	6001.00	25.08%	-0.52%	6.31%
ASIANPAINT	2393.00	-0.60	-0.03%	31.78	758.14	2985.70	19.85%	2124.75	12.63%	-15.29%	5.40%
AXISBANK	1347.00	-9.70	-0.71%	38.66	522.07	1418.30	5.03%	978.05	37.72%	6.66%	32.48%
BAJAJ-AUTO	9870.00	96.00	0.98%	3.24	319.47	9941.00	0.71%	7089.35	39.22%	2.21%	8.73%
BAJAJFINSV	2022.10	-5.80	-0.29%	5.39	109.60	2195.00	7.88%	1727.25	17.07%	1.78%	12.76%
BAJFINANCE	967.05	1.45	0.15%	35.97	348.34	1102.50	12.29%	802.50	20.50%	0.63%	-88.61%
BEL	436.60	-0.70	-0.16%	82.74	361.18	461.65	5.43%	240.25	81.73%	4.45%	57.84%
BHARTIARTL	2010.80	-0.50	-0.02%	74.23	1491.53	2174.50	7.53%	1559.50	28.94%	-0.78%	19.95%
CIPLA	1350.10	8.00	0.60%	8.31	111.83	1673.00	19.30%	1281.70	5.34%	-8.43%	-8.84%
COALINDIA	423.75	-7.20	-1.67%	57.15	241.53	461.55	8.19%	349.25	21.33%	3.01%	13.93%
DRREDDY	1267.10	11.10	0.88%	8.21	104.03	1379.70	8.16%	1020.00	24.23%	3.79%	1.26%
EICHERMOT	7766.50	470.50	6.45%	22.86	1770.83	7805.00	0.49%	4646.00	67.17%	-2.81%	35.80%
ETERNAL	301.00	-2.80	-0.92%	320.83	971.13	368.45	18.31%	194.80	54.52%	6.84%	#VALUE!
GRASIM	2929.00	-24.90	-0.84%	10.15	297.58	2979.00	1.68%	2301.65	27.26%	6.37%	18.74%
HCLTECH	1549.00	-24.10	-1.53%	29.44	458.17	1780.10	12.98%	1302.75	18.90%	-5.31%	-8.84%
HDFCBANK	926.80	-5.60	-0.60%	248.67	2309.91	1020.50	9.18%	830.55	11.59%	-0.70%	-46.19%
HDFCLIFE	700.00	-3.95	-0.56%	18.74	131.42	820.75	14.71%	600.35	16.60%	-6.13%	10.74%
HINDALCO	966.60	-2.30	-0.24%	62.75	602.75	1029.80	6.14%	546.45	76.89%	7.54%	59.52%
HINDUNILVR	2457.70	4.10	0.17%	11.38	280.18	2750.00	10.63%	2136.00	15.06%	3.41%	3.80%
ICICIBANK	1409.00	2.50	0.18%	85.51	1201.73	1500.00	6.07%	1200.10	17.41%	0.16%	11.90%
INDIGO	5006.50	46.10	0.93%	5.27	264.38	6232.50	19.67%	4157.85	20.41%	2.40%	13.65%
INFY	1471.00	-26.80	-1.79%	79.33	1176.29	1905.00	22.78%	1307.00	12.55%	-7.21%	-21.32%
ITC	318.10	-3.30	-1.03%	248.42	788.58	444.20	28.39%	302.00	5.33%	-4.67%	-25.40%
JIOFIN	270.20	-	#VALUE!	65.44	176.65	338.60	20.20%	198.65	36.02%	-5.94%	8.32%
JSWSTEEL	1248.10	4.00	0.32%	8.35	104.20	1261.90	1.09%	905.20	37.88%	7.36%	26.85%
KOTAKBANK	429.40	0.10	0.02%	122.99	528.19	460.38	6.73%	378.78	13.36%	-79.81%	-77.75%
LT	4170.00	1.00	0.02%	16.89	703.61	4195.00	0.60%	2965.30	40.63%	3.57%	24.94%
M&M	3675.00	-0.80	-0.02%	47.88	1779.45	3839.90	4.29%	2425.00	51.55%	-0.04%	14.92%
MARUTI	15432.00	286.00	1.89%	3.61	554.07	17370.00	11.16%	11059.45	39.54%	-8.21%	16.07%
MAXHEALTH	1055.50	34.00	3.33%	41.14	431.43	1314.30	19.69%	933.80	13.03%	0.42%	-10.65%
NESTLEIND	1303.90	-4.70	-0.36%	9.11	119.27	1340.40	2.72%	1055.00	23.59%	0.73%	-41.19%
NTPC	368.00	1.10	0.30%	57.81	212.48	371.45	0.93%	292.80	25.68%	9.20%	15.76%
ONGC	274.40	2.25	0.83%	183.83	498.70	277.77	1.21%	205.00	33.85%	16.26%	9.34%
POWERGRID	294.30	-0.05	-0.02%	105.09	309.26	322.00	8.60%	247.30	19.01%	14.09%	5.82%
RELIANCE	1469.00	10.50	0.72%	71.07	1041.21	1611.80	8.86%	1114.85	31.77%	-1.14%	15.14%
SBILIFE	2025.00	6.70	0.33%	6.63	134.19	2109.60	4.01%	1379.85	46.76%	-2.50%	37.21%
SBIN	1181.10	37.00	3.23%	294.90	3460.19	1187.50	0.54%	680.00	73.69%	14.35%	55.20%
SHRIRAMFIN	1058.50	9.90	0.94%	48.99	515.37	1067.80	0.87%	525.10	101.58%	7.50%	87.40%
SUNPHARMA	1706.00	-1.80	-0.11%	11.75	201.01	1851.20	7.84%	1548.00	10.21%	-1.28%	-2.40%
TATACONSUM	1150.20	-2.00	-0.17%	7.52	86.79	1220.90	5.79%	930.10	23.66%	-2.02%	12.83%
TMPV	384.10	4.75	1.25%	109.33	420.78	744.00	48.37%	335.60	14.45%	7.12%	#VALUE!
TATASTEEL	207.60	-0.41	-0.20%	408.90	849.73	211.10	1.66%	125.30	65.68%	16.60%	50.39%
TCS	2909.00	-75.60	-2.53%	33.63	988.10	4052.00	28.21%	2866.60	1.48%	-6.96%	-25.93%
TECHM	1625.10	-19.50	-1.19%	15.22	249.64	1854.00	12.35%	1209.40	34.37%	3.94%	-2.81%
TITAN	4238.00	-31.10	-0.73%	33.42	1432.93	4378.40	3.21%	2925.00	44.89%	1.60%	24.65%
TRENT	4217.30	32.90	0.79%	5.67	237.52	6261.00	32.64%	3645.00	15.70%	5.32%	-23.28%
ULTRACEMCO	12940.00	-83.00	-0.64%	0.92	119.78	13110.00	1.30%	10047.85	28.78%	9.10%	11.88%
WIPRO	229.90	-1.57	-0.68%	78.74	181.56	321.00	28.38%	226.26	1.61%	-11.64%	-27.21%

## Disclaimer / Disclosures

### ANALYST CERTIFICATION

I, Mrs. Vaishali Parekh B.com, Research Analyst, author and the name subscribed to this report, hereby certify that all of the views expressed in this research report accurately reflect our views about the subject issuer(s) or securities. We also certify that no part of our compensation was, is, or will be directly or indirectly related to the specific recommendation(s) or view(s) in this report.

Terms & conditions and other disclosures:

Prabhudas Lilladher Pvt. Ltd, Mumbai, India (hereinafter referred to as "PL") is engaged in the business of Stock Broking, Portfolio Manager, Depository Participant and distribution for third party financial products. PL is a subsidiary of Prabhudas Lilladher Advisory Services Pvt Ltd. which has its various subsidiaries engaged in business of commodity broking, investment banking, financial services (margin funding) and distribution of third party financial/other products, details in respect of which are available at [www.plindia.com](http://www.plindia.com)

This document has been prepared by the Research Division of PL and is meant for use by the recipient only as information and is not for circulation. This document is not to be reported or copied or made available to others without prior permission of PL. It should not be considered or taken as an offer to sell or a solicitation to buy or sell any security.

The information contained in this report has been obtained from sources that are considered to be reliable. However, PL has not independently verified the accuracy or completeness of the same. Neither PL nor any of its affiliates, its directors or its employees accepts any responsibility of whatsoever nature for the information, statements and opinion given, made available or expressed herein or for any omission therein.

Recipients of this report should be aware that past performance is not necessarily a guide to future performance and value of investments can go down as well. The suitability or otherwise of any investments will depend upon the recipient's particular circumstances and, in case of doubt, advice should be sought from an independent expert/advisor.

Either PL or its affiliates or its directors or its employees or its representatives or its clients or their relatives may have position(s), make market, act as principal or engage in transactions of securities of companies referred to in this report and they may have used the research material prior to publication.

PL may from time to time solicit or perform investment banking or other services for any company mentioned in this document.

PL is registered as Research Analyst under Securities and Exchange Board of India (Research Analysts) Regulations, 2014 PL submits that no material disciplinary action has been taken on us by any Regulatory Authority impacting Equity Research Analysis activities.

PL or its research analysts or its associates or his relatives do not have any financial interest in the subject company.

PL or its research analysts or its associates or his relatives do not have actual/beneficial ownership of one per cent or more securities of the subject company at the end of the month immediately preceding the date of publication of the research report.

PL or its research analysts or its associates or his relatives do not have any material conflict of interest at the time of publication of the research report.

PL or its associates might have received compensation from the subject company in the past twelve months.

PL or its associates might have managed or co-managed public offering of securities for the subject company in the past twelve months or mandated by the subject company for any other assignment in the past twelve months.

PL or its associates might have received any compensation for investment banking or merchant banking or brokerage services from the subject company in the past twelve months.

PL or its associates might have received any compensation for products or services other than investment banking or merchant banking or brokerage services from the subject company in the past twelve months PL or its associates might have received any compensation or other benefits from the subject company or third party in connection with the research report.

PL encourages independence in research report preparation and strives to minimize conflict in preparation of research report. PL or its analysts did not receive any compensation or other benefits from the subject Company or third party in connection with the preparation of the research report. PL or its Research Analysts do not have any material conflict of interest at the time of publication of this report.

It is confirmed that Mrs. Vaishali Parekh B.com, Research Analyst of this report has not received any compensation from the companies mentioned in the report in the preceding twelve months compensation of our Research Analysts is not based on any specific merchant banking, investment banking or brokerage service transactions.

The Research analysts for this report certifies that all of the views expressed in this report accurately reflect his or her personal views about the subject company or companies and its or their securities, and no part of his or her compensation was, is or will be, directly or indirectly related to specific recommendations or views expressed in this report.

The research analysts for this report has not served as an officer, director or employee of the subject company PL or its research analysts have not engaged in market making activity for the subject company

Our sales people, traders, and other professionals or affiliates may provide oral or written market commentary or trading strategies to our clients that reflect opinions that are contrary to the opinions expressed herein, and our proprietary trading and investing businesses may make investment decisions that are inconsistent with the recommendations expressed herein. In reviewing these materials, you should be aware that any or all of the foregoing, among other things, may give rise to real or potential conflicts of interest.

PL and its associates, their directors and employees may (a) from time to time, have a long or short position in, and buy or sell the securities of the subject company or (b) be engaged in any other transaction involving such securities and earn brokerage or other compensation or act as a market maker in the financial instruments of the subject company or act as an advisor or lender/borrower to the subject company or may have any other potential conflict of interests with respect to any recommendation and other related information and opinions.

**Regd. Office:** 3<sup>rd</sup> Floor, Sadhana House, 570, P. B. Marg, Behind Mahindra Tower, Worli, Mumbai - 400 018, India.