

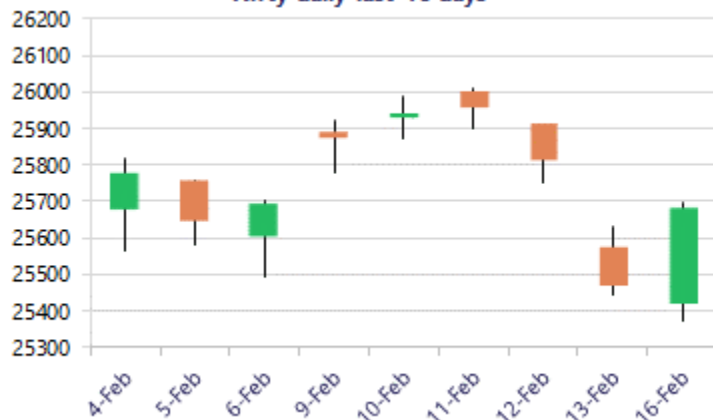
Date: 17th February 2026

* Sensex 83277.15 + 650.39

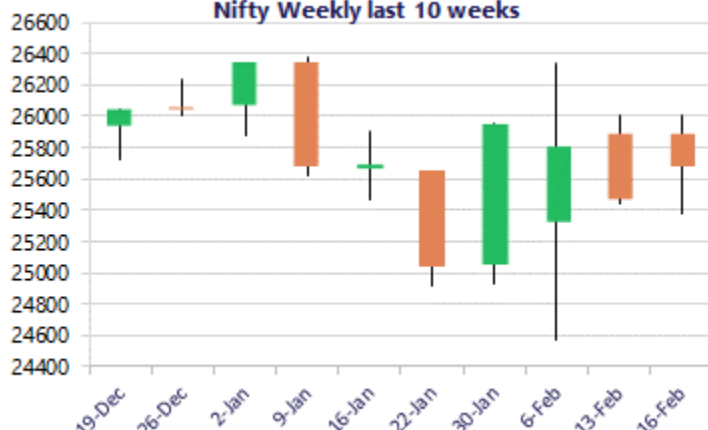
* Nifty 25682.75 + 211.65

* Bank Nifty 60949.10 + 762.45

Nifty daily last 10 days



Nifty Weekly last 10 weeks



*Blue candle → Close rate > Open rate * Red candle → Close rate < Open rate

Market Preview

Nifty regains strength; ends near the 25700 zone.

Nifty witnessed a decent recovery from the low made near the 25450 zone and closed near the 50EMA level of 25677, gaining 212 points with the bias maintained positive. Bank Nifty indicated a clear breakout above the 60750 zone on the daily line chart closing basis to enter into a new territory, and with a strong bias maintained, it is expected to carry on with the positive move further ahead. The market breadth ended on a flat note, with the advance decline indicating a neutral ratio at close.

Market Forecast

Nifty daily range 25500 - 25900

Nifty opened on a weak note with a gap down but witnessed a significant and steady recovery from the low made near the 25444 zone to improve the sentiment and maintained the bias overall intact with a sustained optimistic approach. The index can carry on with the positive move to retest the gap zone of the 25800-26000 level once again in the coming days, with the important 200 DMA level at the 25300 zone positioned as the important support level for the index, which needs to be sustained.

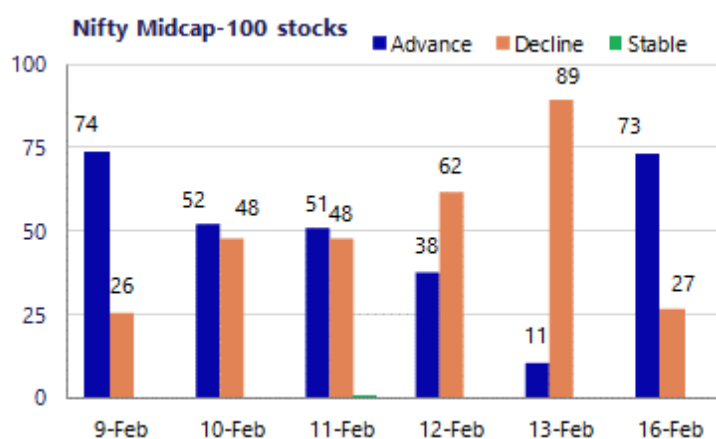
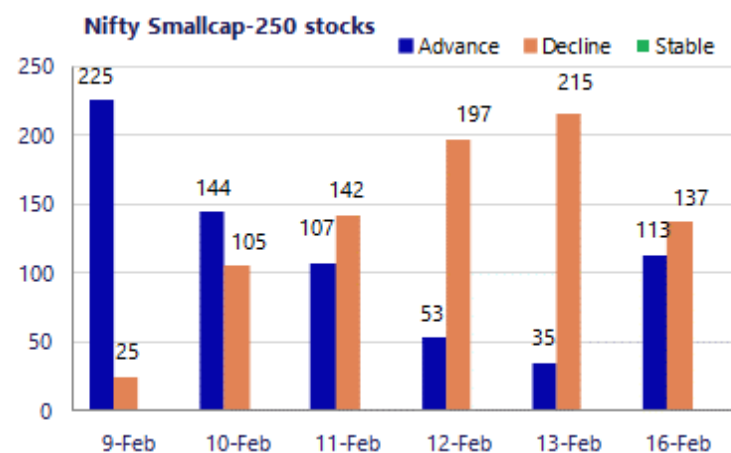
Bank Nifty, after opening with a gap down near the 59860 zone, witnessed a decent bounce back to touch the 61000 level and indicated a strong bullish candle formation on the daily chart to witness a range breakout above the 60750 zone and enter a new territory, triggering a fresh round of upward movement in the coming days. The index would have the near-term support positioned near the 50EMA level of the 59500 zone, which needs to be sustained, and on the upside, we can expect fresh higher targets of 61800 and 62500 levels in the coming days.

The support for the day is seen at 25500 levels, while the resistance is seen at 26900 levels. Bank Nifty would have the daily range of 60500-61500 levels.

Sensex	Period	Closing	% Chng	Trend	Reversal	2 Sup	1 Sup	Pivot	1 Res	2 Res
Nifty	Daily	25682.75	0.83%	-3	25812.10	25260	25471	25584	25796	25908
	Weekly	25471.10	-0.87%	-6	25645.35	25081	25276	25643	25838	26205
	Monthly	25320.65	-3.10%	-1	25950.25	24084	24703	25538	26156	26991
Bank Nifty	Daily	60949.10	1.27%	1	60808.10	59457	60203	60607	61353	61757
	Weekly	60186.65	0.11%	-6	60217.50	59636	59911	60394	60669	61151
	Monthly	59610.45	0.05%	4	58708.15	57085	58348	59393	60655	61700
Sensex	Daily	83277.15	0.79%	-3	83737.75	81906	82592	82963	83648	84019
	Weekly	82626.76	-1.14%	-6	83282.40	82573	82600	83544	83571	84514
	Monthly	82269.78	-3.46%	-1	84767.90	78295	80283	83083	85070	87870

Gainers - Losers (Nifty 500 Stocks)

Gainers				Losers			
Company Name	Last Price	% Gain	Volume	Company Name	Last Price	% Loss	Volume
Akums Drugs P	477.2	5.73%	2554310	Brainbees Solu	239.70	-11.16%	9180721
Adani Green Ene	991.25	4.29%	4171646	BSE Limited	2804.6	-7.30%	12398767
Aster DM Health	620.65	3.46%	925944	C. E. Info Syst	1,152.70	-6.60%	244569
Aurobindo Pharm	1,184.60	3.40%	1559771	Angel One	2,572.80	-4.65%	1995861
Authum Invest	500.40	2.89%	328965	Bata India	828.85	-2.75%	208847
3M India	36,095.00	2.79%	6515	Ceat	3864	-2.55%	92977
Astral Ltd	1,639.80	2.71%	1220610	Bayer CropScien	4680.2	-2.32%	11018



Nifty Daily chart with RSI indicator



BankNifty Daily chart with RSI indicator



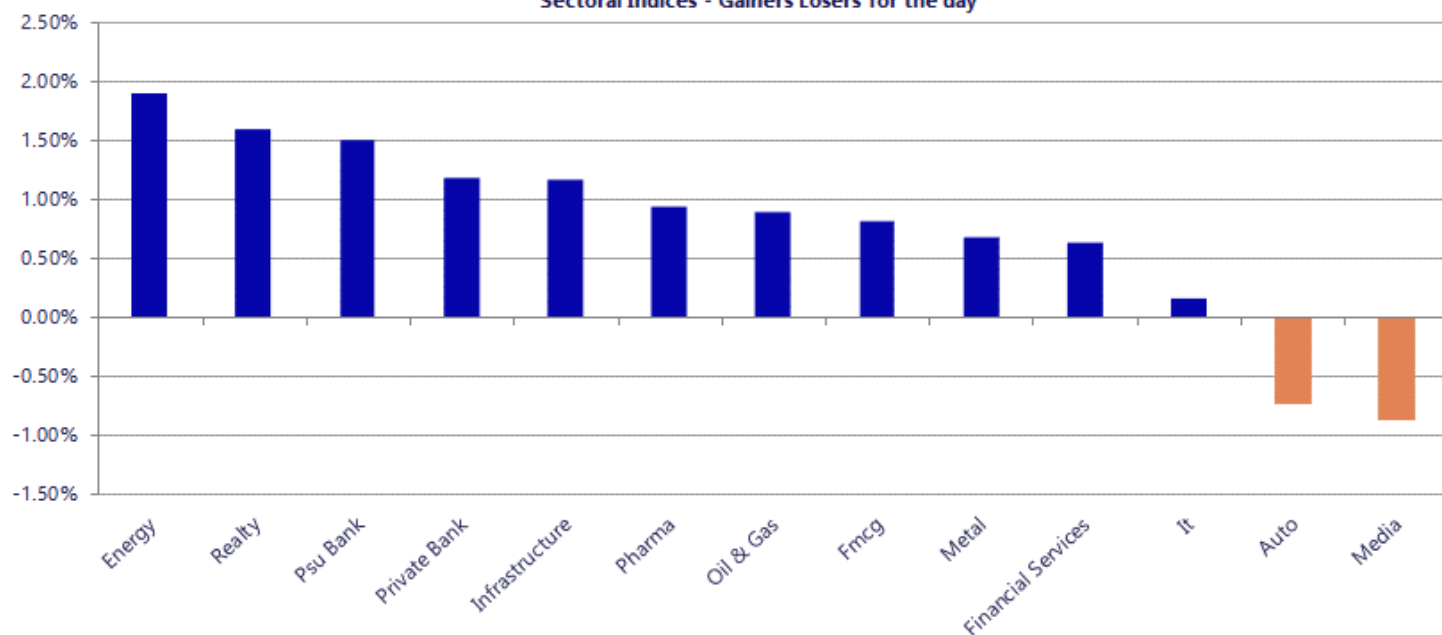
Breakouts - Cross above 200 DMA			
Company Name	LCP	Change %	200 DMA
Engineers India	226.62	11.15	203.89
Kabra Extrusion	266.93	4.49	255.46
Good Luck	1132.7	3.87	1090.52
Sadhav Shipping	109.95	3.34	106.4
Aprameya Engine	234.95	3.20	227.66
Diamond Power	140.84	2.92	136.85
Ingersoll Rand	3854.8	2.69	3753.99
India Nippon	834.15	2.62	812.82
QMS Medical	92.75	2.42	90.56
Vesuvius India	521.65	2.28	510.02
Siemens	3215.6	2.22	3145.66
Medico Remedies	48.4	2.13	47.39
Azad Eng	1648.4	1.80	1619.32
Voltamp Trans	8189.5	1.71	8052.17
Jullundur Motor	89.79	1.69	88.3
ICE Make Refrig	777.1	1.65	764.48
B&B Triplewall	189.94	1.55	187.04
Aster DM Health	620.65	1.50	611.47

* Stocks crossing above its Simple Moving Average (200DMA)

Breakdown - Cross below 200 DMA			
Company Name	LCP	Change %	200 DMA
Orient Tech	295.75	-10.51	330.47
Sigma Solve	41.73	-8.33	45.52
RBZ Jewellers	136.54	-3.52	141.52
Redtape	128.03	-2.82	131.74
HBL Eng	738.25	-2.69	758.66
Dolphin Offshor	397.3	-2.67	408.18
Kontor Space	72	-2.24	73.65
EMULTIMQ	41.11	-1.96	41.93
Grindwell Norto	1603.9	-1.90	1634.99
TBO Tek	1442.3	-1.85	1469.43
Maithan Alloys	1052.3	-1.78	1071.36
Paisalo Digital	33.65	-1.78	34.26
Vishnusurya Pro	170	-1.64	172.84
Shree Pushkar	353.1	-1.46	358.32
Sobha	1484.5	-1.45	1506.4
PVR INOX	1032.5	-1.36	1046.77
Gokul Agro	163.48	-1.35	165.72
Mahindra Life	364.05	-1.30	368.84

* Stocks crossing below its Simple Moving Average (200DMA)

Sectoral Indices - Gainers Losers for the day



Stocks witnessing a volume surge as compared to their 5 day average

Watch out for the stocks that have seen a huge spurt in its share price over the last three days

Volume Shockers - NSE					
Company name	LCP	% Chg	Volume	Avg Vol *	% Chg
Nicco Parks	72	-1.42	541929	3123	17251
Dhanuka Agritec	1092.5	-2.69	227481	1466	15415
IG Petro	339.1	0.91	103306	1173	8704
Modern Eng	38	1.12	101226	1793	5546
Natco Pharma	877.35	6.72	2104226	49396	4160
NFL	81.65	4.53	1377904	32707	4113
Cohance Life	304.95	-3.37	727400	17800	3986
Pennar Inds	164	-7.66	476080	13391	3455
Indigo Paints	988.5	1.63	87833	2636	3232
JagsonpalPharma	174.5	0.14	180307	5886	2963
Alkem Lab	5475.55	1.37	103601	3483	2874
RACL Geartech	1442.25	20	63422	2141	2863
Precision Wires	301.15	15.14	847872	40586	1989
Shiva Global	30.5	-17.16	66119	3391	1850
JB Chemicals	1973.6	4.27	88530	4562	1840
Novartis India	824	4.01	147863	7641	1835
India Nippon	827	6.91	21994	1158	1799
SRM Contractors	423	8	71247	4019	1673
Bharat Seats	195.7	19.99	131438	7954	1552
BDH Industries	417.4	1.76	23205	1432	1520
C E Info	1154.1	-6.54	157873	10527	1400

Price Shockers - NSE				
Company name	LCP	Prv Close	% Chg	Volume
GE Power India	507	333.3	52.12	2101495
Maestros Elect	148.95	116.25	28.13	66749
Engineers India	231.3	184.2	25.57	6289572
UPIL	265.5	215.4	23.26	3995
Kwality Pharmac	1405	1147.5	22.44	106740
RACL Geartech	1442.25	1186.9	21.51	63422
York Exports	72	59.4	21.21	1368
Waterbase	58.51	48.4	20.89	347829
Titan Biotech	1335	1108.2	20.47	33887
Golkunda Diamon	267	223.45	19.49	13379
Majestic Auto	464	390.25	18.9	168109
Jigar Cables	70.8	59.88	18.24	0
Sayaji Industri	86	73.5	17.01	4189
Lincoln Pharma	620	531.05	16.75	13079
JITF Infralogis	393.85	340.25	15.75	17857
MIZZEN VENTURES	177.9	153.69	15.75	11971
AVI Photochem	32.2	27.82	15.74	102
J J Finance	64.71	55.91	15.74	1095
Saffron Ind	43.48	37.57	15.73	1586
Mapro Ind	57.68	49.84	15.73	51769
Associated Coat	113.75	98.29	15.73	3000

Nifty 50 stocks - Summary Details											
Symbol	LTP	Chng	% Chng	Volume (lacs)	Turnover (crs.)	52w High	Diff with 52w H	52w Low	Diff with 52w L	30 days % chng	365 days % chng
NIFTY 50	25682.75	211.65	0.83%	3254.84	22205.46	26373.20	2.62%	21743.65	18.12%	-0.05%	12.01%
ADANIENT	2181.30	44.70	2.09%	18.25	393.99	2616.50	16.63%	1848.00	18.04%	1.11%	4.37%
ADANIPTS	1538.00	19.00	1.25%	16.44	250.62	1583.90	2.90%	1036.50	48.38%	8.17%	44.73%
APOLLOHOSP	7585.00	52.50	0.70%	4.95	374.98	8099.50	6.35%	6001.00	26.40%	4.83%	20.96%
ASIANPAINT	2400.00	33.60	1.42%	6.83	163.11	2985.70	19.62%	2124.75	12.95%	-12.95%	7.56%
AXISBANK	1358.00	25.70	1.93%	50.82	687.15	1418.30	4.25%	978.05	38.85%	4.93%	36.14%
BAJAJ-AUTO	9690.00	-70.00	-0.72%	0.88	85.63	9941.00	2.52%	7089.35	36.68%	2.12%	13.91%
BAJAJFINSV	2053.10	29.90	1.48%	8.12	166.15	2195.00	6.46%	1733.00	18.47%	2.53%	11.50%
BAJFINANCE	1013.00	-11.75	-1.15%	44.61	453.54	1102.50	8.12%	819.71	23.58%	6.60%	20.71%
BEL	437.85	2.30	0.53%	81.57	355.09	461.65	5.16%	240.25	82.25%	6.73%	74.90%
BHARTIARTL	2030.00	25.30	1.26%	34.56	697.59	2174.50	6.65%	1559.50	30.17%	0.67%	18.23%
CIPLA	1355.00	23.50	1.76%	16.17	217.85	1673.00	19.01%	1281.70	5.72%	-3.04%	-7.16%
COALINDIA	422.30	13.35	3.26%	97.19	408.64	461.55	8.50%	349.25	20.92%	-2.02%	19.23%
DRREDDY	1268.00	-0.10	-0.01%	4.70	59.54	1379.70	8.10%	1020.00	24.31%	7.87%	5.93%
EICHERMOT	8000.50	-64.50	-0.80%	5.90	473.40	8119.00	1.46%	4646.00	72.20%	9.37%	70.10%
ETERNAL	286.35	1.15	0.40%	199.58	572.48	368.45	22.28%	194.80	47.00%	-0.47%	32.58%
GRASIM	2896.20	8.20	0.28%	2.85	82.70	2979.00	2.78%	2301.65	25.83%	3.08%	19.12%
HCLTECH	1465.60	10.40	0.71%	23.89	347.84	1780.10	17.67%	1302.75	12.50%	-13.69%	-14.36%
HDFCBANK	925.50	21.60	2.39%	188.06	1734.21	1020.50	9.31%	830.55	11.43%	-0.60%	9.21%
HDFCLIFE	706.00	9.20	1.32%	19.75	138.73	820.75	13.98%	600.35	17.60%	-3.62%	12.74%
HINDALCO	907.10	-1.90	-0.21%	69.43	626.71	1029.80	11.91%	546.45	66.00%	-2.95%	49.64%
HINDUNILVR	2318.30	13.10	0.57%	20.37	470.66	2750.00	15.70%	2136.00	8.53%	-1.78%	#VALUE!
ICICIBANK	1413.00	-1.60	-0.11%	50.00	704.42	1500.00	5.80%	1200.10	17.74%	0.16%	12.13%
INDIGO	4949.00	19.80	0.40%	4.25	210.16	6232.50	20.59%	4157.85	19.03%	4.41%	17.18%
INFY	1370.00	0.90	0.07%	146.22	1974.78	1873.50	26.87%	1281.50	6.91%	-18.93%	-26.20%
ITC	318.10	4.35	1.39%	116.93	370.23	444.20	28.39%	302.00	5.33%	-3.37%	-22.46%
JIOFIN	262.60	-1.35	-0.51%	138.27	361.40	338.60	22.45%	198.65	32.19%	-5.81%	18.13%
JSWSTEEL	1247.00	15.00	1.22%	6.27	77.80	1261.90	1.18%	905.20	37.76%	5.03%	29.28%
KOTAKBANK	426.15	5.50	1.31%	124.03	523.67	460.38	7.44%	378.78	12.51%	1.90%	9.13%
LT	4200.00	26.10	0.63%	8.53	356.55	4206.00	0.14%	2965.30	41.64%	8.91%	29.72%
M&M	3506.30	-27.10	-0.77%	15.62	547.46	3839.90	8.69%	2425.00	44.59%	-4.15%	19.16%
MARUTI	15064.00	-173.00	-1.14%	2.10	316.54	17370.00	13.28%	11059.45	36.21%	-5.01%	18.80%
MAXHEALTH	1075.00	21.40	2.03%	25.24	269.79	1314.30	18.21%	933.80	15.12%	3.66%	7.11%
NESTLEIND	1288.00	5.40	0.42%	4.56	58.75	1340.40	3.91%	1055.00	22.09%	-2.12%	17.31%
NTPC	368.90	5.90	1.63%	62.93	231.90	372.00	0.83%	292.80	25.99%	6.51%	22.82%
ONGC	271.50	4.10	1.53%	132.47	358.84	280.30	3.14%	205.00	32.44%	9.84%	17.79%
POWERGRID	300.80	13.60	4.74%	221.97	660.85	322.00	6.58%	247.30	21.63%	16.91%	16.88%
RELIANCE	1434.10	14.50	1.02%	58.96	840.86	1611.80	11.02%	1114.85	28.64%	-1.63%	17.81%
SBILIFE	2042.00	7.80	0.38%	5.81	118.52	2109.60	3.20%	1379.85	47.99%	-1.87%	39.34%
SBIN	1210.70	12.10	1.01%	149.73	1788.78	1212.30	0.13%	680.00	78.04%	16.16%	67.65%
SHRIRAMFIN	1085.00	19.20	1.80%	50.96	548.34	1088.30	0.30%	525.10	106.63%	9.00%	101.24%
SUNPHARMA	1698.40	0.90	0.05%	12.47	212.06	1851.20	8.25%	1548.00	9.72%	1.77%	-0.12%
TATACONSUM	1138.80	6.60	0.58%	7.81	88.60	1220.90	6.72%	930.10	22.44%	-4.23%	11.37%
TMPV	376.80	-3.45	-0.91%	50.04	188.77	744.00	49.35%	335.60	12.28%	6.56%	-44.64%
TATASTEEL	205.50	2.32	1.14%	179.32	366.20	211.10	2.65%	125.30	64.01%	9.19%	52.82%
TCS	2713.00	20.80	0.77%	29.19	785.76	3984.45	31.91%	2585.00	4.95%	-15.40%	-31.05%
TECHM	1513.90	-20.50	-1.34%	18.73	283.53	1854.00	18.34%	1209.40	25.18%	-9.37%	-8.75%
TITAN	4172.00	-7.20	-0.17%	5.00	208.67	4378.40	4.71%	2925.00	42.63%	-0.59%	29.84%
TRENT	4224.60	-27.40	-0.64%	6.99	296.53	6261.00	32.53%	3645.00	15.90%	8.33%	-17.45%
ULTRACEMCO	12949.00	-14.00	-0.11%	0.82	105.77	13110.00	1.23%	10047.85	28.87%	4.61%	14.96%
WIPRO	213.19	-0.90	-0.42%	207.54	440.61	316.50	32.64%	209.01	2.00%	-20.29%	-30.80%

Disclaimer / Disclosures

ANALYST CERTIFICATION

I, Mrs. Vaishali Parekh B.com, Research Analyst, author and the name subscribed to this report, hereby certify that all of the views expressed in this research report accurately reflect our views about the subject issuer(s) or securities. We also certify that no part of our compensation was, is, or will be directly or indirectly related to the specific recommendation(s) or view(s) in this report.

Terms & conditions and other disclosures:

Prabhudas Lilladher Pvt. Ltd, Mumbai, India (hereinafter referred to as "PL") is engaged in the business of Stock Broking, Portfolio Manager, Depository Participant and distribution for third party financial products. PL is a subsidiary of Prabhudas Lilladher Advisory Services Pvt Ltd. which has its various subsidiaries engaged in business of commodity broking, investment banking, financial services (margin funding) and distribution of third party financial/other products, details in respect of which are available at www.plindia.com

This document has been prepared by the Research Division of PL and is meant for use by the recipient only as information and is not for circulation. This document is not to be reported or copied or made available to others without prior permission of PL. It should not be considered or taken as an offer to sell or a solicitation to buy or sell any security.

The information contained in this report has been obtained from sources that are considered to be reliable. However, PL has not independently verified the accuracy or completeness of the same. Neither PL nor any of its affiliates, its directors or its employees accepts any responsibility of whatsoever nature for the information, statements and opinion given, made available or expressed herein or for any omission therein.

Recipients of this report should be aware that past performance is not necessarily a guide to future performance and value of investments can go down as well. The suitability or otherwise of any investments will depend upon the recipient's particular circumstances and, in case of doubt, advice should be sought from an independent expert/advisor.

Either PL or its affiliates or its directors or its employees or its representatives or its clients or their relatives may have position(s), make market, act as principal or engage in transactions of securities of companies referred to in this report and they may have used the research material prior to publication.

PL may from time to time solicit or perform investment banking or other services for any company mentioned in this document.

PL is registered as Research Analyst under Securities and Exchange Board of India (Research Analysts) Regulations, 2014 PL submits that no material disciplinary action has been taken on us by any Regulatory Authority impacting Equity Research Analysis activities.

PL or its research analysts or its associates or his relatives do not have any financial interest in the subject company.

PL or its research analysts or its associates or his relatives do not have actual/beneficial ownership of one per cent or more securities of the subject company at the end of the month immediately preceding the date of publication of the research report.

PL or its research analysts or its associates or his relatives do not have any material conflict of interest at the time of publication of the research report.

PL or its associates might have received compensation from the subject company in the past twelve months.

PL or its associates might have managed or co-managed public offering of securities for the subject company in the past twelve months or mandated by the subject company for any other assignment in the past twelve months.

PL or its associates might have received any compensation for investment banking or merchant banking or brokerage services from the subject company in the past twelve months.

PL or its associates might have received any compensation for products or services other than investment banking or merchant banking or brokerage services from the subject company in the past twelve months PL or its associates might have received any compensation or other benefits from the subject company or third party in connection with the research report.

PL encourages independence in research report preparation and strives to minimize conflict in preparation of research report. PL or its analysts did not receive any compensation or other benefits from the subject Company or third party in connection with the preparation of the research report. PL or its Research Analysts do not have any material conflict of interest at the time of publication of this report.

It is confirmed that Mrs. Vaishali Parekh B.com, Research Analyst of this report has not received any compensation from the companies mentioned in the report in the preceding twelve months compensation of our Research Analysts is not based on any specific merchant banking, investment banking or brokerage service transactions.

The Research analysts for this report certifies that all of the views expressed in this report accurately reflect his or her personal views about the subject company or companies and its or their securities, and no part of his or her compensation was, is or will be, directly or indirectly related to specific recommendations or views expressed in this report.

The research analysts for this report has not served as an officer, director or employee of the subject company PL or its research analysts have not engaged in market making activity for the subject company

Our sales people, traders, and other professionals or affiliates may provide oral or written market commentary or trading strategies to our clients that reflect opinions that are contrary to the opinions expressed herein, and our proprietary trading and investing businesses may make investment decisions that are inconsistent with the recommendations expressed herein. In reviewing these materials, you should be aware that any or all of the foregoing, among other things, may give rise to real or potential conflicts of interest.

PL and its associates, their directors and employees may (a) from time to time, have a long or short position in, and buy or sell the securities of the subject company or (b) be engaged in any other transaction involving such securities and earn brokerage or other compensation or act as a market maker in the financial instruments of the subject company or act as an advisor or lender/borrower to the subject company or may have any other potential conflict of interests with respect to any recommendation and other related information and opinions.

Regd. Office: 3rd Floor, Sadhana House, 570, P. B. Marg, Behind Mahindra Tower, Worli, Mumbai - 400 018, India.