

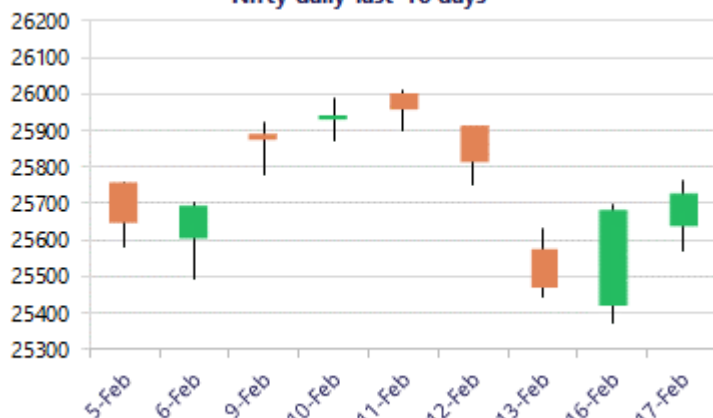
Date: 18th February 2026

* Sensex 83450.96 + 173.81

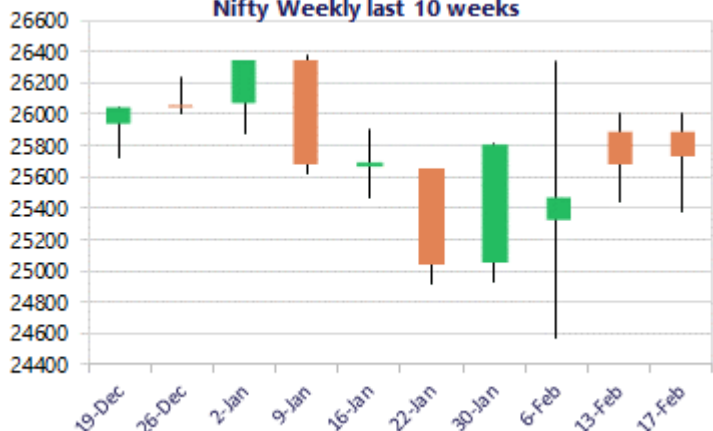
* Nifty 25725.40 + 42.65

* Bank Nifty 61174.00 + 224.90

Nifty daily last 10 days



Nifty Weekly last 10 weeks



*Blue candle → Close rate > Open rate * Red candle → Close rate < Open rate

Market Preview

Nifty ends above the 50EMA at 25680 level

Nifty recovered after the weak opening session to move above the important 50EMA level at 25680 zone to expect for further upward move in the coming sessions. BankNifty extended the gains after the strong move in the previous session to close on a record high note and has optimistic view for the coming sessions. The market breadth was strong with the advance decline indicating a ratio of 2:1 at close.

Market Forecast

Nifty daily range 25600 - 25900

Nifty, after witnessing a weak start to the session, the index gained thereafter to end in the green with bias and sentiment slightly on the improvement closing above the important 50EMA level at 25680 zone expecting for further gains in the coming sessions. As mentioned earlier, the index would have the near-term support of the important 200 period MA at 25300 level which needs to be sustained and, on the upside, would have the resistance barrier of 26000 level which needs to be breached to establish conviction and clarity.

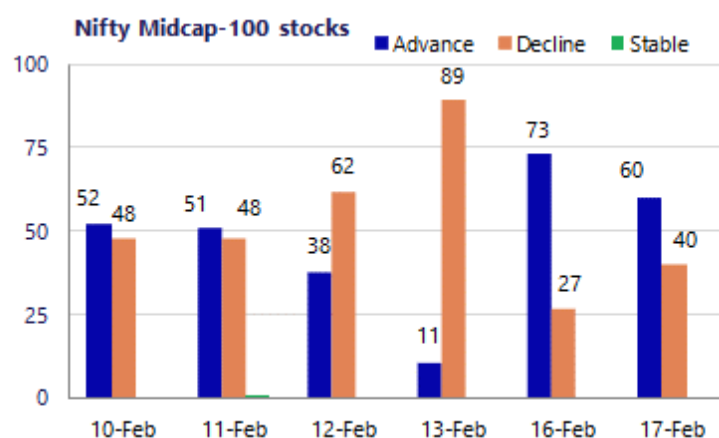
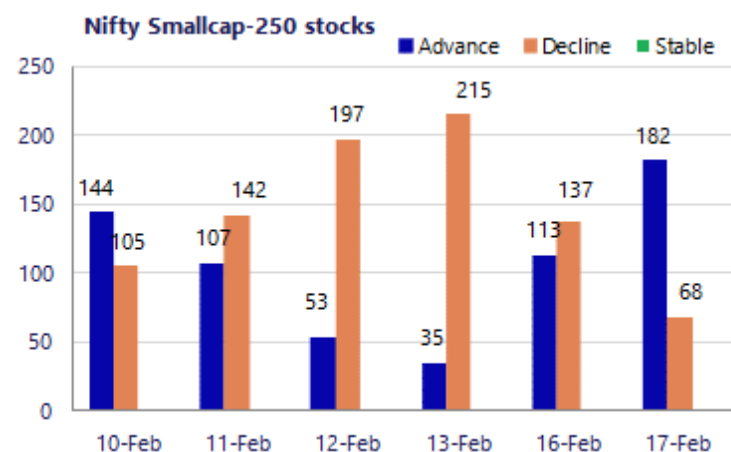
BankNifty has outperformed the Nifty index in the last two sessions gaining strength and has recorded the highest closing above the 61000 level for the first time indicating optimism for further rise in the coming sessions. The index would have the next near-term strong support zone positioned near the important 50EMA level at 59600 level which needs to be sustained and, on the upside, is ready to retest the previous peak zone of 61770 levels in the coming days, and a decisive breach above can trigger for further fresh upward move.

The support for the day is seen at 25600 levels, while the resistance is seen at 25900 levels. BankNifty would have the daily range of 60700-61700 levels.

Sensex	Period	Closing	% Chng	Trend	Reversal	2 Sup	1 Sup	Pivot	1 Res	2 Res
Nifty	Daily	25725.40	0.17%	-4	25800.10	25493	25609	25687	25803	25881
	Weekly	25471.10	-0.87%	-6	25645.35	25081	25276	25643	25838	26205
	Monthly	25320.65	-3.10%	-1	25950.25	24084	24703	25538	26156	26991
Bank Nifty	Daily	61174.00	0.37%	2	60971.30	60310	60742	60992	61424	61673
	Weekly	60186.65	0.11%	-6	60217.50	59636	59911	60394	60669	61151
	Monthly	59610.45	0.05%	4	58708.15	57085	58348	59393	60655	61700
Sensex	Daily	83450.96	0.21%	-4	83677.50	82735	83093	83345	83703	83956
	Weekly	82626.76	-1.14%	-6	83282.40	82573	82600	83544	83571	84514
	Monthly	82269.78	-3.46%	-1	84767.90	78295	80283	83083	85070	87870

Gainers - Losers (Nifty 500 Stocks)

Gainers				Losers			
Company Name	Last Price	% Gain	Volume	Company Name	Last Price	% Loss	Volume
Delhivery	434.85	4.01%	3217087	Brainbees Solu	229.90	-4.09%	3566042
ACME Solar	234.83	3.86%	843529	BSE Limited	2742.3	-2.22%	6802007
Cochin Shipyard	1525.6	3.82%	4331037	CCL Products	1,007.90	-1.74%	400670
Bank of Baroda	303.25	3.66%	17492467	AFFLE 3I	1,561.20	-1.26%	121513
Coromandel Int	2,369.90	3.61%	285749	Birlasoft	385.85	-1.17%	2460929
Bank of India	170.21	2.78%	15316713	Blue Dart	5770	-1.11%	4612
Bank of Mah	67.30	2.72%	22761522	Capri Global	173.13	-1.11%	541952



Nifty Daily chart with RSI indicator



BankNifty Daily chart with RSI indicator



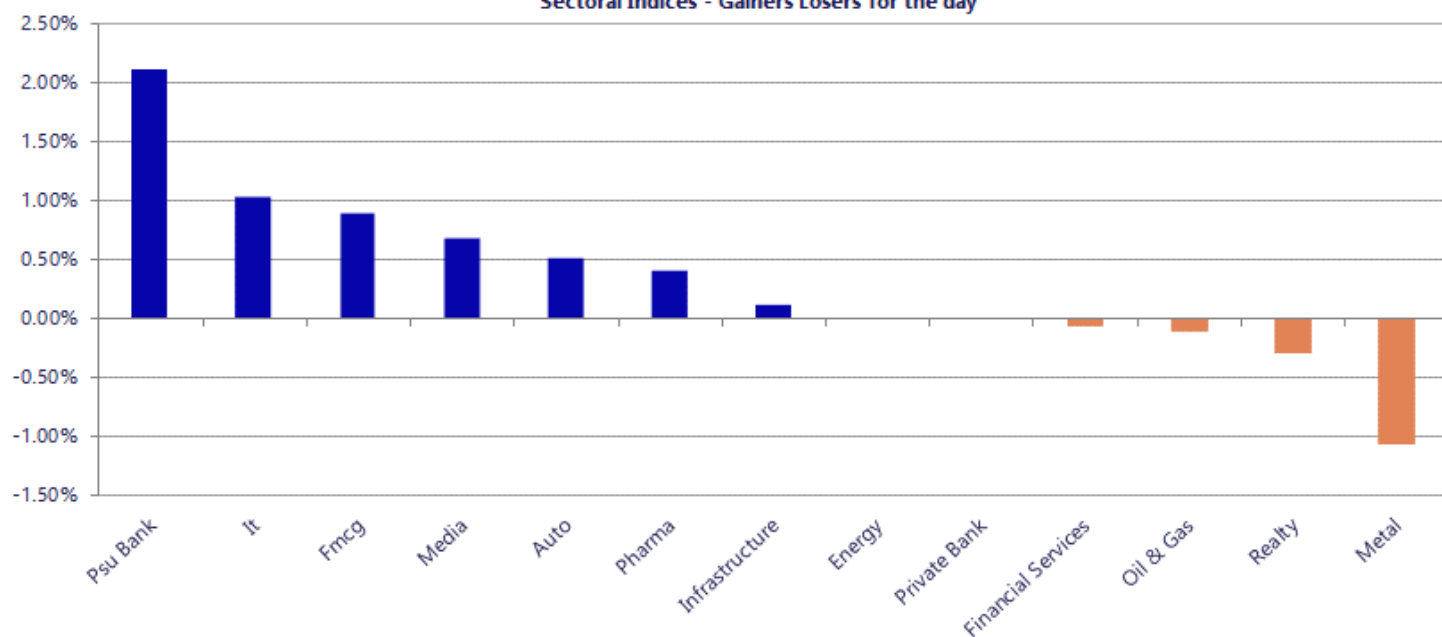
Breakouts - Cross above 200 DMA			
Company Name	LCP	Change %	200 DMA
Delhivery	434.85	4.00	418.13
Krishna Institu	709.95	3.49	686.04
PPAP Automotive	232.43	3.09	225.47
Coromandel Int	2369.9	2.63	2309.18
Thyrocare Techn	420.35	2.61	409.64
One 97 Comm	1169.3	2.50	1140.74
India Glycols	960.05	2.38	937.76
Rane Madras	847.15	2.31	828.03
Timken	3159.6	2.28	3089.04
Indo US Bio-Tec	145.23	2.20	142.1
Adani Green Ene	1016.8	2.14	995.5
Satin Credit	155.16	2.07	152.02
Ratnaveer Preci	154.18	2.07	151.05
Anjani Portland	137.51	1.92	134.92
Kontor Space	74.95	1.79	73.63
CARE Ratings	1653.1	1.65	1626.23
RHI Magnesita	473	1.53	465.88
Anlon Technolog	404	1.34	398.67

* Stocks crossing above its Simple Moving Average (200DMA)

Breakdown - Cross below 200 DMA			
Company Name	LCP	Change %	200 DMA
Phoenix Oversea	20.05	-8.74	21.97
Dhanuka Infra	17.15	-4.14	17.89
Kavveri Defence	73.03	-3.50	75.68
Gokaldas Export	799.65	-2.80	822.72
Gulshan Poly	156.1	-2.17	159.57
IPHL	57.1	-2.16	58.36
Shigan Quantum	67.5	-2.12	68.96
Sandhar Technol	493.4	-2.07	503.81
B&B Triplewall	183.33	-2.06	187.18
AB Cotspin	419.35	-1.19	424.39
HVAX Technologi	775	-1.13	783.88
Centum Electron	2362.5	-1.04	2387.29
Choice Internat	755.85	-1.01	763.54
Sasta Sundar	290.85	-0.87	293.41
Waaree Energies	3053.1	-0.82	3078.49
Nandani Creatio	37.88	-0.76	38.17
E2E Networks	2556.9	-0.73	2575.81
Kotak NiftyInd	121.86	-0.60	122.6

* Stocks crossing below its Simple Moving Average (200DMA)

Sectoral Indices - Gainers Losers for the day



Stocks witnessing a volume surge as compared to their 5 day average

Watch out for the stocks that have seen a huge spurt in its share price over the last three days

Volume Shockers - NSE					
Company name	LCP	% Chg	Volume	Avg Vol *	% Chg
Arvind Infra	553	1.94	2322707	5637	41103
G R Infraprojec	975.65	-0.39	484816	3462	13906
Star Cement	217.2	1	2028534	21168	9483
Nirlon	524.75	1.89	1634688	22747	7087
Newgen Software	516.95	11.71	5107034	109463	4566
PBM Polytex	54.22	-4.36	45699	1076	4149
IndusInd Bank	943	1.19	1969823	46393	4146
Cohance Life	308.55	0.78	627910	17800	3428
Bharat Seats	208.7	6.64	1069713	32341	3208
Sigma Solve	38.85	-7.06	35969	1373	2520
AVT Natural	66.68	1.29	39776	2086	1807
Quick Heal Tech	185.25	6.16	98322	6059	1523
Texmaco Rail	115.7	4	1228509	78536	1464
Godrej Consumer	1216.2	1.04	162950	11294	1343
CHOKSI ASIA	157.8	20	28926	2167	1235
Voltas	1534.95	0.2	506288	44597	1035
RACL Geartech	1646.8	14.18	155463	14403	979
Gujarat Fluoro	3389.9	2.58	37481	3735	903
Blue Jet Health	362.85	1.43	87180	9068	861
Suraj Products	218	4.68	25240	2665	847
Sterling Wilson	216.3	7	375388	40859	819

Price Shockers - NSE				
Company name	LCP	Prv Close	% Chg	Volume
Vistar Amar	151.25	105.05	43.98	22184
RACL Geartech	1646.8	1201.9	37.02	155463
Maestros Elect	160	124.15	28.88	70706
Bharat Seats	208.7	163.1	27.96	1069713
CHOKSI ASIA	157.8	126.8	24.45	28926
Alacrity Sec	60	49.22	21.9	20156
Betex	366.3	302.75	20.99	2222
AB Money	157.85	133.45	18.28	3717
Titan Biotech	1428	1212.15	17.81	50642
Garg Furnace	164.95	141.75	16.37	12606
Garnet Construc	110	94.85	15.97	90277
NDA Securities	34.99	30.27	15.59	4264
Asian Hotels	296.45	257.1	15.31	5952
India Nippon	891.85	773.55	15.29	17386
Bazel Internati	75.9	65.86	15.24	53012
Good Luck	1249.6	1085.75	15.09	19766
GE Power India	552.05	479.9	15.03	1448355
Gandhi Spl Tube	917.85	799.95	14.74	24449
Mangalam Cement	890.05	777.15	14.53	8459
IRIS RegTech	270	237.55	13.66	1297
Jindal Poly Inv	1244.7	1097.75	13.39	15382

Nifty 50 stocks - Summary Details											
Symbol	LTP	Chng	% Chng	Volume (lacs)	Turnover (crs.)	52w High	Diff with 52w H	52w Low	Diff with 52w L	30 days % chng	365 days % chng
NIFTY 50	25725.40	42.65	0.17%	3783.76	27814.72	26373.20	2.46%	21743.65	18.31%	0.12%	12.05%
ADANIENT	2244.40	59.80	2.74%	19.31	428.48	2616.50	14.22%	1848.00	21.45%	4.04%	3.96%
ADANIPTS	1562.60	22.50	1.46%	31.68	495.30	1583.90	1.34%	1036.50	50.76%	9.90%	44.30%
APOLLOHOSP	7576.50	-41.50	-0.54%	5.25	398.99	8099.50	6.46%	6001.00	26.25%	4.71%	20.26%
ASIANPAINT	2439.00	41.80	1.74%	10.04	244.61	2985.70	18.31%	2124.75	14.79%	-11.53%	8.36%
AXISBANK	1354.00	-4.30	-0.32%	45.12	611.78	1418.30	4.53%	978.05	38.44%	4.62%	36.36%
BAJAJ-AUTO	9821.00	123.50	1.27%	1.59	155.87	9941.00	1.21%	7089.35	38.53%	3.50%	15.04%
BAJAJFINSV	2040.30	-10.60	-0.52%	2.52	51.59	2195.00	7.05%	1733.00	17.73%	1.89%	7.68%
BAJFINANCE	1012.00	-0.75	-0.07%	29.14	294.57	1102.50	8.21%	821.13	23.24%	6.50%	20.10%
BEL	446.65	8.65	1.97%	179.57	799.25	461.65	3.25%	240.25	85.91%	8.87%	79.74%
BHARTIARTL	2021.60	-7.80	-0.38%	44.71	905.59	2174.50	7.03%	1559.50	29.63%	0.26%	20.65%
CIPLA	1343.20	-13.20	-0.97%	14.14	190.10	1673.00	19.71%	1281.70	4.80%	-3.89%	-8.91%
COALINDIA	422.00	-0.50	-0.12%	45.64	192.30	461.55	8.57%	349.25	20.83%	-2.09%	17.19%
DRREDDY	1281.30	11.90	0.94%	6.87	87.72	1379.70	7.13%	1020.00	25.62%	9.00%	6.87%
EICHERMOT	8022.00	11.50	0.14%	2.66	213.00	8119.00	1.19%	4646.00	72.66%	9.67%	69.06%
ETERNAL	281.35	-5.25	-1.83%	342.90	959.25	368.45	23.64%	194.80	44.43%	-2.21%	28.75%
GRASIM	2891.00	-21.70	-0.75%	4.58	132.98	2979.00	2.95%	2301.65	25.61%	2.90%	17.34%
HCLTECH	1483.70	21.90	1.50%	28.40	423.20	1780.10	16.65%	1302.75	13.89%	-12.62%	-13.23%
HDFCBANK	926.45	0.65	0.07%	225.98	2091.01	1020.50	9.22%	830.55	11.55%	-0.50%	7.89%
HDFCLIFE	705.00	1.10	0.16%	13.20	93.23	820.75	14.10%	600.35	17.43%	-3.76%	13.12%
HINDALCO	890.50	-16.95	-1.87%	70.99	630.63	1029.80	13.53%	546.45	62.96%	-4.72%	45.78%
HINDUNILVR	2312.90	-6.10	-0.26%	12.33	285.04	2750.00	15.89%	2136.00	8.28%	-2.01%	-0.71%
ICICIBANK	1405.00	-6.60	-0.47%	117.55	1651.17	1500.00	6.33%	1200.10	17.07%	-0.41%	12.30%
INDIGO	4966.40	25.60	0.52%	2.64	131.37	6232.50	20.31%	4157.85	19.45%	4.78%	15.42%
INFY	1391.30	25.70	1.88%	253.44	3563.22	1861.65	25.27%	1281.50	8.57%	-17.66%	-24.48%
ITC	325.40	7.45	2.34%	393.58	1278.86	444.20	26.74%	302.00	7.75%	-1.15%	-20.36%
JIOFIN	261.80	-0.75	-0.29%	74.05	194.44	338.60	22.68%	198.65	31.79%	-6.10%	17.69%
JSWSTEEL	1241.50	-6.70	-0.54%	11.15	138.44	1261.90	1.62%	905.20	37.15%	4.56%	27.52%
KOTAKBANK	424.30	-1.30	-0.31%	64.27	272.25	460.38	7.84%	378.78	12.02%	1.46%	9.06%
LT	4275.80	74.30	1.77%	17.63	749.49	4287.00	0.26%	2965.30	44.19%	10.88%	32.71%
M&M	3488.40	-21.30	-0.61%	19.92	693.08	3839.90	9.15%	2425.00	43.85%	-4.64%	23.18%
MARUTI	15192.00	141.00	0.94%	1.67	252.44	17370.00	12.54%	11059.45	37.37%	-4.21%	19.03%
MAXHEALTH	1076.00	0.15	0.01%	17.01	183.08	1314.30	18.13%	933.80	15.23%	3.76%	6.05%
NESTLEIND	1286.60	-3.20	-0.25%	3.96	50.86	1340.40	4.01%	1055.00	21.95%	-2.23%	16.09%
NTPC	368.25	-0.85	-0.23%	44.43	163.29	372.00	1.01%	292.80	25.77%	6.32%	21.80%
ONGC	271.85	0.30	0.11%	212.90	576.05	280.30	3.01%	205.00	32.61%	9.99%	16.35%
POWERGRID	300.30	-0.20	-0.07%	111.90	335.01	322.00	6.74%	247.30	21.43%	16.71%	14.10%
RELIANCE	1424.20	-12.90	-0.90%	107.30	1526.93	1611.80	11.64%	1114.85	27.75%	-2.31%	16.27%
SBILIFE	2035.80	-6.60	-0.32%	3.77	76.81	2109.60	3.50%	1379.85	47.54%	-2.17%	37.91%
SBIN	1213.60	5.50	0.46%	201.06	2446.82	1225.50	0.97%	680.00	78.47%	16.43%	66.77%
SHRIRAMFIN	1073.00	-12.40	-1.14%	28.31	302.48	1088.30	1.41%	525.10	104.34%	7.79%	94.97%
SUNPHARMA	1716.60	16.10	0.95%	10.54	180.68	1851.20	7.27%	1548.00	10.89%	2.86%	0.14%
TATACONSUM	1148.00	8.80	0.77%	4.43	50.66	1220.90	5.97%	930.10	23.43%	-3.46%	12.19%
TMPV	383.20	5.95	1.58%	78.42	297.91	744.00	48.49%	335.60	14.18%	8.37%	-44.19%
TATASTEEL	202.89	-2.92	-1.42%	184.95	375.68	211.10	3.89%	125.30	61.92%	7.80%	51.08%
TCS	2719.80	13.20	0.49%	42.08	1151.03	3934.00	30.86%	2585.00	5.21%	-15.18%	-30.34%
TECHM	1520.00	7.30	0.48%	17.81	272.97	1854.00	18.02%	1209.40	25.68%	-9.01%	-8.71%
TITAN	4236.00	54.90	1.31%	4.64	195.74	4378.40	3.25%	2925.00	44.82%	0.93%	31.02%
TRENT	4170.00	-59.50	-1.41%	3.93	163.92	6261.00	33.40%	3645.00	14.40%	6.93%	-18.18%
ULTRACEMCO	12984.00	3.00	0.02%	1.36	176.40	13110.00	0.96%	10047.85	29.22%	4.90%	13.00%
WIPRO	215.85	2.59	1.21%	269.34	582.56	316.50	31.80%	209.01	3.27%	-19.29%	-29.31%

Disclaimer / Disclosures

ANALYST CERTIFICATION

I, Mrs. Vaishali Parekh B.com, Research Analyst, author and the name subscribed to this report, hereby certify that all of the views expressed in this research report accurately reflect our views about the subject issuer(s) or securities. We also certify that no part of our compensation was, is, or will be directly or indirectly related to the specific recommendation(s) or view(s) in this report.

Terms & conditions and other disclosures:

Prabhudas Lilladher Pvt. Ltd, Mumbai, India (hereinafter referred to as "PL") is engaged in the business of Stock Broking, Portfolio Manager, Depository Participant and distribution for third party financial products. PL is a subsidiary of Prabhudas Lilladher Advisory Services Pvt Ltd. which has its various subsidiaries engaged in business of commodity broking, investment banking, financial services (margin funding) and distribution of third party financial/other products, details in respect of which are available at www.plindia.com

This document has been prepared by the Research Division of PL and is meant for use by the recipient only as information and is not for circulation. This document is not to be reported or copied or made available to others without prior permission of PL. It should not be considered or taken as an offer to sell or a solicitation to buy or sell any security.

The information contained in this report has been obtained from sources that are considered to be reliable. However, PL has not independently verified the accuracy or completeness of the same. Neither PL nor any of its affiliates, its directors or its employees accepts any responsibility of whatsoever nature for the information, statements and opinion given, made available or expressed herein or for any omission therein.

Recipients of this report should be aware that past performance is not necessarily a guide to future performance and value of investments can go down as well. The suitability or otherwise of any investments will depend upon the recipient's particular circumstances and, in case of doubt, advice should be sought from an independent expert/advisor.

Either PL or its affiliates or its directors or its employees or its representatives or its clients or their relatives may have position(s), make market, act as principal or engage in transactions of securities of companies referred to in this report and they may have used the research material prior to publication.

PL may from time to time solicit or perform investment banking or other services for any company mentioned in this document.

PL is registered as Research Analyst under Securities and Exchange Board of India (Research Analysts) Regulations, 2014 PL submits that no material disciplinary action has been taken on us by any Regulatory Authority impacting Equity Research Analysis activities.

PL or its research analysts or its associates or his relatives do not have any financial interest in the subject company.

PL or its research analysts or its associates or his relatives do not have actual/beneficial ownership of one per cent or more securities of the subject company at the end of the month immediately preceding the date of publication of the research report.

PL or its research analysts or its associates or his relatives do not have any material conflict of interest at the time of publication of the research report.

PL or its associates might have received compensation from the subject company in the past twelve months.

PL or its associates might have managed or co-managed public offering of securities for the subject company in the past twelve months or mandated by the subject company for any other assignment in the past twelve months.

PL or its associates might have received any compensation for investment banking or merchant banking or brokerage services from the subject company in the past twelve months.

PL or its associates might have received any compensation for products or services other than investment banking or merchant banking or brokerage services from the subject company in the past twelve months PL or its associates might have received any compensation or other benefits from the subject company or third party in connection with the research report.

PL encourages independence in research report preparation and strives to minimize conflict in preparation of research report. PL or its analysts did not receive any compensation or other benefits from the subject Company or third party in connection with the preparation of the research report. PL or its Research Analysts do not have any material conflict of interest at the time of publication of this report.

It is confirmed that Mrs. Vaishali Parekh B.com, Research Analyst of this report has not received any compensation from the companies mentioned in the report in the preceding twelve months compensation of our Research Analysts is not based on any specific merchant banking, investment banking or brokerage service transactions.

The Research analysts for this report certifies that all of the views expressed in this report accurately reflect his or her personal views about the subject company or companies and its or their securities, and no part of his or her compensation was, is or will be, directly or indirectly related to specific recommendations or views expressed in this report.

The research analysts for this report has not served as an officer, director or employee of the subject company PL or its research analysts have not engaged in market making activity for the subject company

Our sales people, traders, and other professionals or affiliates may provide oral or written market commentary or trading strategies to our clients that reflect opinions that are contrary to the opinions expressed herein, and our proprietary trading and investing businesses may make investment decisions that are inconsistent with the recommendations expressed herein. In reviewing these materials, you should be aware that any or all of the foregoing, among other things, may give rise to real or potential conflicts of interest.

PL and its associates, their directors and employees may (a) from time to time, have a long or short position in, and buy or sell the securities of the subject company or (b) be engaged in any other transaction involving such securities and earn brokerage or other compensation or act as a market maker in the financial instruments of the subject company or act as an advisor or lender/borrower to the subject company or may have any other potential conflict of interests with respect to any recommendation and other related information and opinions.

Regd. Office: 3rd Floor, Sadhana House, 570, P. B. Marg, Behind Mahindra Tower, Worli, Mumbai - 400 018, India.