

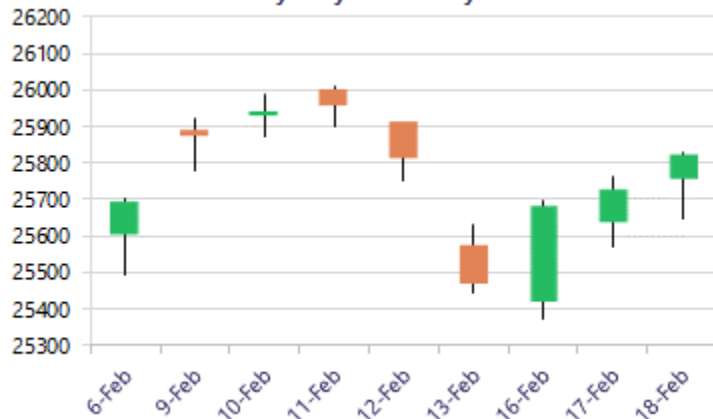
Date: 19<sup>th</sup> February 2026

\* Sensex 83734.25 + 283.29

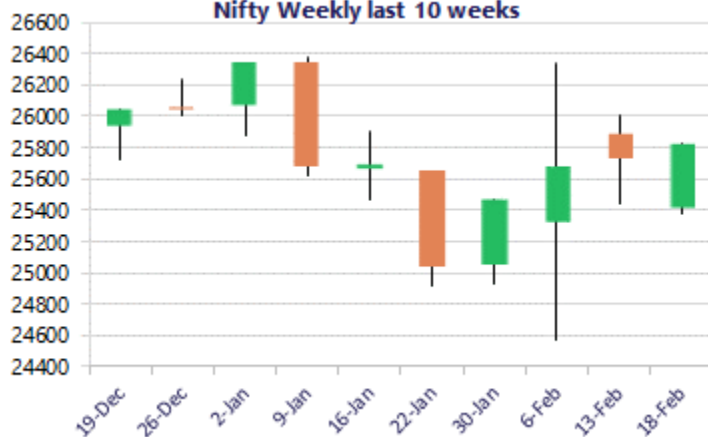
\* Nifty 25819.35 + 93.95

\* Bank Nifty 61550.80 + 376.80

Nifty daily last 10 days



Nifty Weekly last 10 weeks



\*Blue candle → Close rate > Open rate \* Red candle → Close rate < Open rate

## Market Preview

### Nifty extends gains with improving bias.

Nifty extended its gains to reach the 25,800 level, with the bias visibly improving. It can expect a further rise in the coming days. Bank Nifty moved past the crucial hurdle of the 61500 level with the trend improving, and we can anticipate a further rise in the coming days. The market breadth was positive, with the advance-decline ratio indicating nearly 2:1.

## Market Forecast

### Nifty daily range 25600 - 26000

Nifty continues to gain strength, sustaining above the important 50EMA level, which is positioned near the 25680 zone, maintained as the strong near-term support, and currently closing above the 25800 level has further improved bias and sentiment overall. With the broader markets supporting the benchmark index, on the upside, Nifty needs to breach above the important hurdle of the 26000 zone, which shall establish further stability and conviction for further upward movement in the coming days.

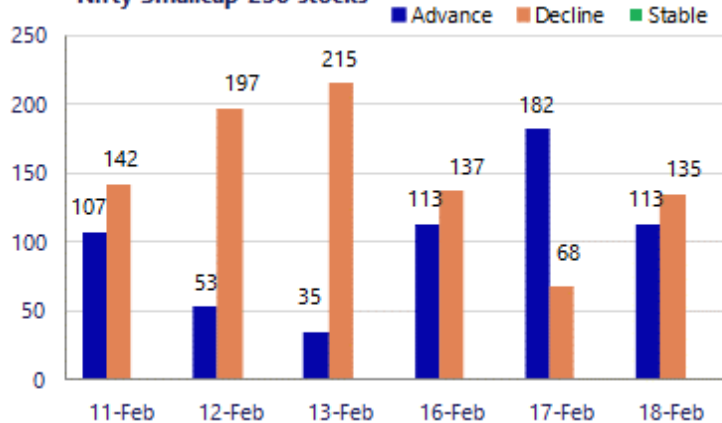
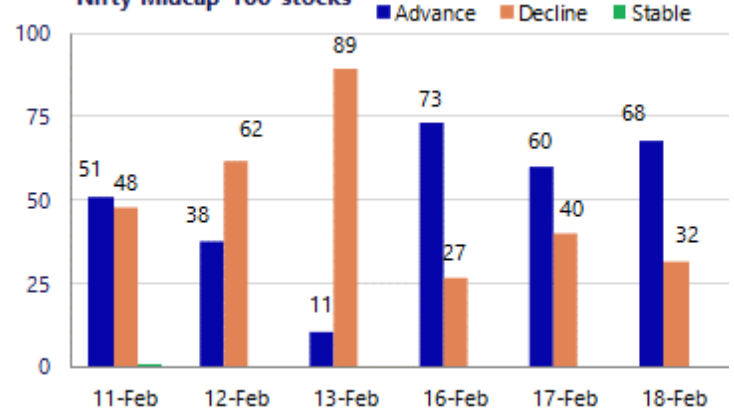
Bank Nifty, once again, hit a new high on the closing basis, scaling above the 61500 level, and with the bias maintained strong, hovered near the 61500 zone, and we can expect further upward movement in the coming days with PSU banks gaining strength and carrying on with the positive move further ahead. As said earlier, one can expect the index to gain further for fresh upside targets of 62000 and 62800 levels achievable in the coming days with the 59650 zone as the important support area.

The support for the day is seen at 24600 levels, while the resistance is seen at 26000 levels. Bank Nifty would have the daily range of 61000 - 62000 levels.

Sensex	Period	Closing	% Chng	Trend	Reversal	2 Sup	1 Sup	Pivot	1 Res	2 Res
Nifty	Daily	25819.35	0.37%	1	25788.00	25581	25700	25764	25883	25947
	Weekly	25471.10	-0.87%	-6	25645.35	25081	25276	25643	25838	26205
	Monthly	25320.65	-3.10%	-1	25950.25	24084	24703	25538	26156	26991
Bank Nifty	Daily	61550.80	0.62%	3	61183.30	60920	61236	61416	61731	61912
	Weekly	60186.65	0.11%	-6	60217.50	59636	59911	60394	60669	61151
	Monthly	59610.45	0.05%	4	58708.15	57085	58348	59393	60655	61700
Sensex	Daily	83734.25	0.34%	1	83622.80	82950	83342	83556	83948	84162
	Weekly	82626.76	-1.14%	-6	83282.40	82573	82600	83544	83571	84514
	Monthly	82269.78	-3.46%	-1	84767.90	78295	80283	83083	85070	87870

**Gainers - Losers ( Nifty 500 Stocks )**

Gainers				Losers			
Company Name	Last Price	% Gain	Volume	Company Name	Last Price	% Loss	Volume
Transformers	299.81	9.41%	36451691	Brainbees Solu	216.15	-5.98%	5741946
Schneider Infra	920.40	8.35%	4934515	AFFLE 3I	1519.5	-2.67%	223613
Techno Electric	1151.7	6.97%	1523346	Birlasoft	375.80	-2.60%	1489180
Poonawalla Fin	490.40	3.04%	2328167	Dr Lal PathLab	1,405.50	-2.33%	180607
Tata Steel	209.03	2.93%	48346223	Action Const	898.15	-2.31%	121293
Torrent Power	1,527.90	2.79%	1031029	Aurobindo Pharm	1159.6	-2.28%	3294006
Schaeffler Ind	3,886.00	2.71%	42299	Endurance Techn	2477.6	-1.89%	42575

**Nifty Smallcap-250 stocks**

**Nifty Midcap-100 stocks**


## Nifty Daily chart with RSI indicator

Nifty 50 Index - 1D - NSE O25,752.65 H25,828.05 L25,645.15 C25,819.35  
 50,100,200 Moving Average 25,753.02 25,701.95 25,313.34



## BankNifty Daily chart with RSI indicator

BankNifty Index - 1D - NSE O61,255.35 H61,596.85 L61,100.90 C61,550.80  
 50,100,200 Moving Average 59,652.26 58,717.58 57,197.99



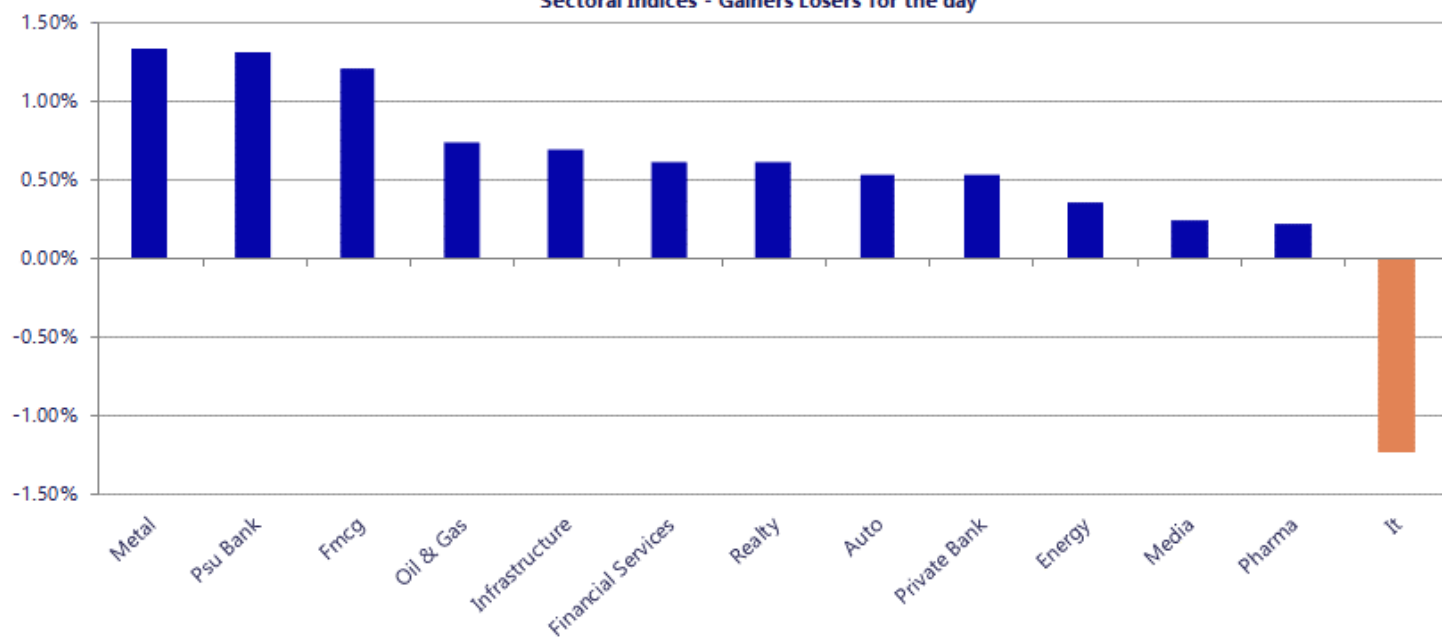
Breakouts - Cross above 200 DMA			
Company Name	LCP	Change %	200 DMA
E2E Networks	2850.4	10.65	2575.99
DRS Dilip Roadl	93.3	4.20	89.54
Premium Plast	37.1	4.15	35.62
Choice Internat	795.4	4.08	764.23
Fonebox Retail	96	3.09	93.12
Banaras Beads	126.08	2.70	122.76
Manaksia Alumin	30.79	2.63	30
Par Drugs	102.1	2.56	99.55
Tirupati Forge	38.66	2.44	37.74
Menon Bearings	122.88	2.11	120.34
Ishan Dyes	60.95	1.99	59.76
Shaily Engg	2097.2	1.21	2072.04
Aarey Drugs	71.27	1.15	70.46
Grindwell Norto	1648.9	0.89	1634.28
ADF Foods	229.59	0.86	227.64
Dolphin Offshor	411.5	0.84	408.09
Himadri Special	471.05	0.80	467.29
Bharat Wire Rop	186.96	0.79	185.49

\* Stocks crossing above its Simple Moving Average (200DMA)

Breakdown - Cross below 200 DMA			
Company Name	LCP	Change %	200 DMA
Anlon Technolog	383.2	-3.97	399.05
Indo Thai Secu	255.07	-1.98	260.21
Rategain Travel	563.3	-1.88	574.11
Tera Software	371.7	-1.78	378.42
Ausom Enterp	106.36	-1.77	108.28
Yudiz Solutions	30.85	-1.56	31.34
Bafna Pharma	116.2	-1.52	117.99
Medico Remedies	46.73	-1.25	47.32
Macpower	904.55	-0.97	913.44
Kernex Micro	1137.6	-0.41	1142.28
Spandana Sphoor	262.85	-0.38	263.86
LT Foods	421.55	-0.32	422.91
EPL	218.32	-0.29	218.95
AstraZeneca	8886	-0.21	8904.41
Viviana Power	784.65	-0.18	786.07
Senco Gold	340.6	-0.18	341.2

\* Stocks crossing below its Simple Moving Average (200DMA)

Sectoral Indices - Gainers Losers for the day



Stocks witnessing a volume surge as compared to their 5 day average

Watch out for the stocks that have seen a huge spurt in its share price over the last three days

Volume Shockers - NSE					
Company name	LCP	% Chg	Volume	Avg Vol *	% Chg
Bharat Wire Rop	184	4.75	182338	1198	15115
Matrimony.com	482.3	-5.23	88380	1445	6018
Supreme Infra	84.9	-0.12	110011	1856	5827
LKP Finance	970	0.68	104723	1769	5819
NDL Ventures	117.6	20	90989	1558	5741
Dodla	1166.35	-1.56	140170	2545	5407
Netweb	3375	8.91	748618	13602	5404
Capri Global	178.2	2.83	3122565	58124	5272
BLB	18.45	19.81	273831	5207	5158
ARUNIS ABODE	86.8	2	976215	19138	5001
Balgopal Commer	199.35	7.76	41503	1110	3640
Vistar Amar	181.5	20	253146	7965	3078
Godfrey Phillip	2481.3	20	898508	33715	2565
Ipca Labs	1480.15	-0.84	404421	15201	2560
Gokul Refoils	40.78	19.98	173771	6600	2533
SRF	2732.7	-0.38	358221	14752	2328
Cohance Life	324.1	5.33	404337	17800	2172
Apar Ind	10192	6.78	28297	1457	1842
Earthstahl	17.99	2.8	93000	4800	1838
Kothari Product	75.63	5.7	42153	2240	1782
South (I) Paper	87.01	-5.01	46099	2558	1702

Price Shockers - NSE				
Company name	LCP	Prv Close	% Chg	Volume
Vistar Amar	181.5	105.05	72.77	253146
UPIL	340.65	252	35.18	18364
Betex	402.9	302.75	33.08	1895
Icon Facilitato	53	41	29.27	38400
CHOKSI ASIA	163.8	126.8	29.18	21812
Gokul Refoils	40.78	31.8	28.24	173771
RACL Geartech	1527.4	1201.9	27.08	11876
Alacrity Sec	62.45	49.22	26.88	80450
Rap Corp	32.36	25.58	26.51	7499
Maestros Elect	155	124.15	24.85	10673
Laffans Petro	34.35	27.8	23.56	32095
Tanvi Foods	80	67	19.4	4000
Godfrey Phillip	2481.3	2081.8	19.19	898508
NDA Securities	35.99	30.27	18.9	7184
Kothari Product	75.63	63.79	18.56	42153
Bharat Seats	193	163.1	18.33	122135
Asian Hotels	302.65	257.1	17.72	2796
Saptarishi Agro	46.84	39.98	17.16	5158
Garnet Construc	111.11	94.85	17.14	73722
IRIS RegTech	278.15	237.55	17.09	2174
HP Cotton	126.1	108	16.76	8291

Nifty 50 stocks - Summary Details											
Symbol	LTP	Chng	% Chng	Volume (lacs)	Turnover (crs.)	52w High	Diff with 52w H	52w Low	Diff with 52w L	30 days % chng	365 days % chng
NIFTY 50	25819.35	93.95	0.37%	4007.69	22226.99	26373.20	2.10%	21743.65	18.74%	0.49%	12.53%
ADANIENT	2213.00	-29.90	-1.33%	11.49	254.08	2616.50	15.42%	1848.00	19.75%	2.58%	2.66%
ADANIPTS	1550.00	-16.30	-1.04%	13.26	205.41	1583.90	2.14%	1036.50	49.54%	9.01%	42.84%
APOLLOHOSP	7645.00	43.50	0.57%	3.86	294.93	8099.50	5.61%	6001.00	27.40%	5.66%	19.89%
ASIANPAINT	2434.40	-3.00	-0.12%	5.52	134.06	2985.70	18.46%	2124.75	14.57%	-11.70%	8.80%
AXISBANK	1376.30	19.10	1.41%	55.56	760.63	1418.30	2.96%	978.05	40.72%	6.34%	38.44%
BAJAJ-AUTO	10004.00	177.50	1.81%	3.34	331.53	10009.00	0.05%	7089.35	41.11%	5.43%	18.44%
BAJAJFINSV	2060.20	15.80	0.77%	6.11	125.66	2195.00	6.14%	1733.00	18.88%	2.88%	8.79%
BAJFINANCE	1020.50	6.35	0.63%	49.29	503.46	1102.50	7.44%	821.13	24.28%	7.39%	20.54%
BEL	446.90	0.05	0.01%	143.37	644.68	461.65	3.20%	240.25	86.01%	8.93%	82.71%
BHARTIARTL	2021.60	1.30	0.06%	21.83	441.39	2174.50	7.03%	1559.50	29.63%	0.26%	21.13%
CIPLA	1350.00	6.10	0.45%	11.19	150.33	1673.00	19.31%	1281.70	5.33%	-3.40%	-8.91%
COALINDIA	418.20	2.15	0.52%	48.72	202.63	461.55	9.39%	349.25	19.74%	-2.97%	15.81%
DRREDDY	1282.90	-1.90	-0.15%	6.90	88.49	1379.70	7.02%	1020.00	25.77%	9.14%	7.14%
EICHERMOT	8020.00	-15.00	-0.19%	2.23	178.42	8119.00	1.22%	4646.00	72.62%	9.64%	69.94%
ETERNAL	277.10	-4.40	-1.56%	351.28	972.98	368.45	24.79%	194.80	42.25%	-3.68%	24.09%
GRASIM	2936.00	35.60	1.23%	3.50	102.57	2979.00	1.44%	2301.65	27.56%	4.50%	19.19%
HCLTECH	1464.90	-17.70	-1.19%	20.36	297.80	1780.10	17.71%	1302.75	12.45%	-13.73%	-15.10%
HDFCBANK	923.70	-2.00	-0.22%	127.37	1175.37	1020.50	9.49%	830.55	11.22%	-0.79%	7.22%
HDFCLIFE	729.70	23.90	3.39%	49.75	358.38	820.75	11.09%	600.35	21.55%	-0.39%	17.89%
HINDALCO	898.75	8.65	0.97%	39.10	351.02	1029.80	12.73%	546.45	64.47%	-3.84%	46.99%
HINDUNILVR	2326.00	13.70	0.59%	8.31	192.57	2750.00	15.42%	2136.00	8.90%	-1.46%	1.31%
ICICIBANK	1406.00	-1.50	-0.11%	47.58	668.01	1500.00	6.27%	1200.10	17.16%	-0.34%	13.11%
INDIGO	4972.00	-5.00	-0.10%	2.02	100.60	6232.50	20.22%	4157.85	19.58%	4.89%	14.42%
INFY	1372.00	-19.20	-1.38%	202.41	2766.79	1861.65	26.30%	1281.50	7.06%	-18.81%	-25.92%
ITC	332.65	7.20	2.21%	354.69	1171.74	444.20	25.11%	302.00	10.15%	1.05%	-17.91%
JIOFIN	263.90	1.60	0.61%	94.51	248.98	338.60	22.06%	198.65	32.85%	-5.34%	19.40%
JSWSTEEL	1253.00	8.40	0.67%	13.90	174.25	1264.00	0.87%	905.20	38.42%	5.53%	28.01%
KOTAKBANK	425.70	1.25	0.29%	73.33	311.18	460.38	7.53%	378.78	12.39%	1.79%	8.41%
LT	4310.00	30.20	0.71%	20.43	878.46	4335.00	0.58%	2965.30	45.35%	11.76%	33.84%
M&M	3543.00	53.80	1.54%	16.82	589.70	3839.90	7.73%	2425.00	46.10%	-3.15%	26.99%
MARUTI	15165.00	-14.00	-0.09%	2.81	424.91	17370.00	12.69%	11059.45	37.12%	-4.38%	18.60%
MAXHEALTH	1085.00	8.85	0.82%	6.81	73.70	1314.30	17.45%	933.80	16.19%	4.63%	4.51%
NESTLEIND	1301.90	16.60	1.29%	4.46	57.52	1340.40	2.87%	1055.00	23.40%	-1.06%	17.16%
NTPC	368.00	-0.40	-0.11%	48.71	179.49	372.00	1.08%	292.80	25.68%	6.25%	18.25%
ONGC	264.70	-0.90	-0.34%	116.20	306.89	280.30	5.57%	205.00	29.12%	7.09%	11.88%
POWERGRID	299.50	-1.25	-0.42%	91.47	274.84	322.00	6.99%	247.30	21.11%	16.40%	12.19%
RELIANCE	1441.00	18.00	1.26%	55.21	790.66	1611.80	10.60%	1114.85	29.26%	-1.16%	17.59%
SBILIFE	2061.00	21.50	1.05%	3.53	72.50	2109.60	2.30%	1379.85	49.36%	-0.96%	39.70%
SBIN	1219.20	5.80	0.48%	104.17	1269.76	1225.50	0.51%	680.00	79.29%	16.97%	67.98%
SHRIRAMFIN	1074.70	-0.30	-0.03%	24.70	266.12	1088.30	1.25%	525.10	104.67%	7.96%	94.22%
SUNPHARMA	1725.50	8.40	0.49%	12.62	217.82	1851.20	6.79%	1548.00	11.47%	3.39%	1.40%
TATACONSUM	1167.00	18.50	1.61%	6.42	74.73	1220.90	4.41%	930.10	25.47%	-1.86%	13.64%
TMPV	382.80	-0.05	-0.01%	47.97	183.24	744.00	48.55%	335.60	14.06%	8.26%	-43.90%
TATASTEEL	208.85	5.77	2.84%	483.56	1007.11	211.10	1.07%	125.30	66.68%	10.97%	55.23%
TCS	2694.50	-22.90	-0.84%	29.51	793.07	3934.00	31.51%	2585.00	4.24%	-15.97%	-30.43%
TECHM	1500.00	-23.80	-1.56%	19.89	297.63	1854.00	19.09%	1209.40	24.03%	-10.21%	-12.02%
TITAN	4251.00	14.60	0.34%	3.87	164.40	4378.40	2.91%	2925.00	45.33%	1.29%	31.94%
TRENT	4181.90	10.00	0.24%	3.73	155.53	6261.00	33.21%	3645.00	14.73%	7.24%	-16.32%
ULTRACEMCO	13068.00	84.00	0.65%	1.62	210.57	13110.00	0.32%	10047.85	30.06%	5.57%	15.56%
WIPRO	212.15	-3.54	-1.64%	226.78	480.19	316.50	32.97%	209.01	1.50%	-20.68%	-32.05%

## Disclaimer / Disclosures

### ANALYST CERTIFICATION

I, Mrs. Vaishali Parekh B.com, Research Analyst, author and the name subscribed to this report, hereby certify that all of the views expressed in this research report accurately reflect our views about the subject issuer(s) or securities. We also certify that no part of our compensation was, is, or will be directly or indirectly related to the specific recommendation(s) or view(s) in this report.

Terms & conditions and other disclosures:

Prabhudas Lilladher Pvt. Ltd, Mumbai, India (hereinafter referred to as "PL") is engaged in the business of Stock Broking, Portfolio Manager, Depository Participant and distribution for third party financial products. PL is a subsidiary of Prabhudas Lilladher Advisory Services Pvt Ltd. which has its various subsidiaries engaged in business of commodity broking, investment banking, financial services (margin funding) and distribution of third party financial/other products, details in respect of which are available at [www.plindia.com](http://www.plindia.com)

This document has been prepared by the Research Division of PL and is meant for use by the recipient only as information and is not for circulation. This document is not to be reported or copied or made available to others without prior permission of PL. It should not be considered or taken as an offer to sell or a solicitation to buy or sell any security.

The information contained in this report has been obtained from sources that are considered to be reliable. However, PL has not independently verified the accuracy or completeness of the same. Neither PL nor any of its affiliates, its directors or its employees accepts any responsibility of whatsoever nature for the information, statements and opinion given, made available or expressed herein or for any omission therein.

Recipients of this report should be aware that past performance is not necessarily a guide to future performance and value of investments can go down as well. The suitability or otherwise of any investments will depend upon the recipient's particular circumstances and, in case of doubt, advice should be sought from an independent expert/advisor.

Either PL or its affiliates or its directors or its employees or its representatives or its clients or their relatives may have position(s), make market, act as principal or engage in transactions of securities of companies referred to in this report and they may have used the research material prior to publication.

PL may from time to time solicit or perform investment banking or other services for any company mentioned in this document.

PL is registered as Research Analyst under Securities and Exchange Board of India (Research Analysts) Regulations, 2014 PL submits that no material disciplinary action has been taken on us by any Regulatory Authority impacting Equity Research Analysis activities.

PL or its research analysts or its associates or his relatives do not have any financial interest in the subject company.

PL or its research analysts or its associates or his relatives do not have actual/beneficial ownership of one per cent or more securities of the subject company at the end of the month immediately preceding the date of publication of the research report.

PL or its research analysts or its associates or his relatives do not have any material conflict of interest at the time of publication of the research report.

PL or its associates might have received compensation from the subject company in the past twelve months.

PL or its associates might have managed or co-managed public offering of securities for the subject company in the past twelve months or mandated by the subject company for any other assignment in the past twelve months.

PL or its associates might have received any compensation for investment banking or merchant banking or brokerage services from the subject company in the past twelve months.

PL or its associates might have received any compensation for products or services other than investment banking or merchant banking or brokerage services from the subject company in the past twelve months PL or its associates might have received any compensation or other benefits from the subject company or third party in connection with the research report.

PL encourages independence in research report preparation and strives to minimize conflict in preparation of research report. PL or its analysts did not receive any compensation or other benefits from the subject Company or third party in connection with the preparation of the research report. PL or its Research Analysts do not have any material conflict of interest at the time of publication of this report.

It is confirmed that Mrs. Vaishali Parekh B.com, Research Analyst of this report has not received any compensation from the companies mentioned in the report in the preceding twelve months compensation of our Research Analysts is not based on any specific merchant banking, investment banking or brokerage service transactions.

The Research analysts for this report certifies that all of the views expressed in this report accurately reflect his or her personal views about the subject company or companies and its or their securities, and no part of his or her compensation was, is or will be, directly or indirectly related to specific recommendations or views expressed in this report.

The research analysts for this report has not served as an officer, director or employee of the subject company PL or its research analysts have not engaged in market making activity for the subject company

Our sales people, traders, and other professionals or affiliates may provide oral or written market commentary or trading strategies to our clients that reflect opinions that are contrary to the opinions expressed herein, and our proprietary trading and investing businesses may make investment decisions that are inconsistent with the recommendations expressed herein. In reviewing these materials, you should be aware that any or all of the foregoing, among other things, may give rise to real or potential conflicts of interest.

PL and its associates, their directors and employees may (a) from time to time, have a long or short position in, and buy or sell the securities of the subject company or (b) be engaged in any other transaction involving such securities and earn brokerage or other compensation or act as a market maker in the financial instruments of the subject company or act as an advisor or lender/borrower to the subject company or may have any other potential conflict of interests with respect to any recommendation and other related information and opinions.

**Regd. Office:** 3<sup>rd</sup> Floor, Sadhana House, 570, P. B. Marg, Behind Mahindra Tower, Worli, Mumbai - 400 018, India.