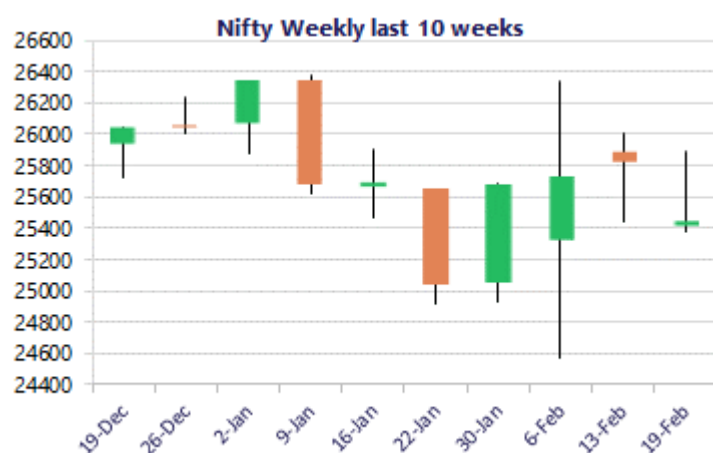
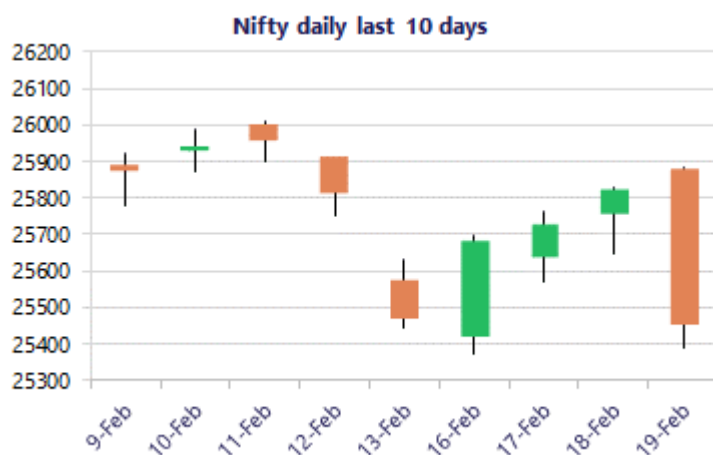


Date: 20th February 2026

* Sensex 82498.14 - 1236.11

* Nifty 25454.35 - 365.00

* Bank Nifty 60739.55 - 811.25



*Blue candle → Close rate > Open rate * Red candle → Close rate < Open rate

Market Preview

Nifty tanks with a Bearish Engulfing candle

Nifty witnessed a huge bearish candle on the daily chart to wipe off the gains witnessed in the last 3 sessions to turn the sentiment and bias very weak. BankNifty tanked with heavy profit booking witnessed to weaken the bias and sentiment maintained with a cautious approach as of now. The market breadth was weak with the advance decline indicating a ratio of 1:3 at close.

Market Forecast

Nifty daily range 25300 - 25700

Nifty, witnessed an abrupt halt to the 3 day successive gaining sessions with a huge bearish engulfing candle with heavy profit booking witnessed, once again to turn the bias and sentiment into a very cautious approach on the back of anticipated global tensions looming around. The index would have the near-term support of the important 200 period MA at 25300 level, and thereafter, the major and crucial base near the 24500 zone which needs to be sustained to maintain the overall trend intact.

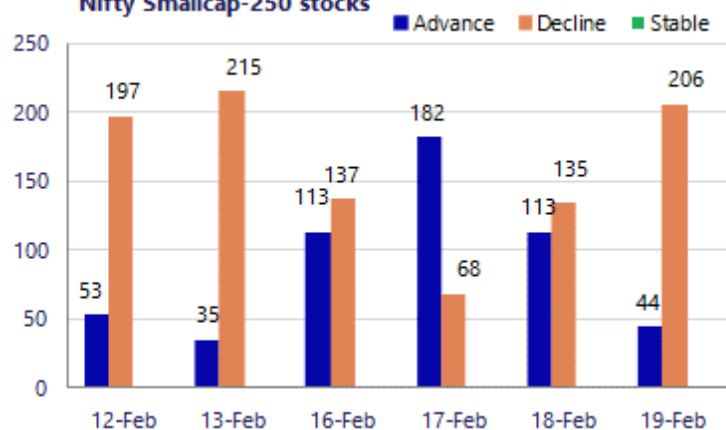
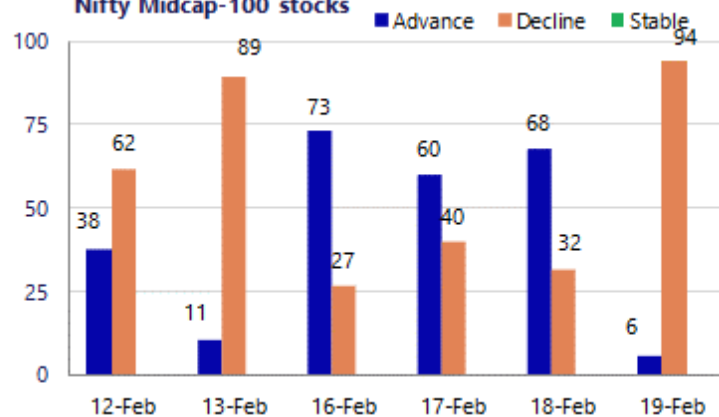
BankNifty also gave in after the strong bias visible in the last 3 sessions with currently pessimism creeping in and maintaining a cautious approach would have the important near-term support near the 50EMA level at 59700 zone which needs to be sustained to maintain the bias positive. The index would have the major and crucial support base positioned near the important 200 period MA at 57300 level which would be the zone to be protected to maintain the overall trend intact.

The support for the day is seen at 25300 levels, while the resistance is seen at 25700 levels. BankNifty would have the daily range of 60000-61400 levels.

Sensex	Period	Closing	% Chng	Trend	Reversal	2 Sup	1 Sup	Pivot	1 Res	2 Res
Nifty	Daily	25454.35	-1.41%	-1	25719.90	25080	25267	25576	25764	26073
	Weekly	25471.10	-0.87%	-6	25645.35	25081	25276	25643	25838	26205
	Monthly	25320.65	-3.10%	-1	25950.25	24084	24703	25538	26156	26991
Bank Nifty	Daily	60739.55	-1.32%	-1	61289.65	59918	60329	61004	61415	62090
	Weekly	60186.65	0.11%	-6	60217.50	59636	59911	60394	60669	61151
	Monthly	59610.45	0.05%	4	58708.15	57085	58348	59393	60655	61700
Sensex	Daily	82498.14	-1.48%	-1	83328.90	81199	81848	82914	83564	84629
	Weekly	82626.76	-1.14%	-6	83282.40	82573	82600	83544	83571	84514
	Monthly	82269.78	-3.46%	-1	84767.90	78295	80283	83083	85070	87870

Gainers - Losers (Nifty 500 Stocks)

Gainers				Losers			
Company Name	Last Price	% Gain	Volume	Company Name	Last Price	% Loss	Volume
Birlasoft	385.95	2.70%	2354077	C. E. Info Syst	1,118.40	-3.79%	458386
Authum Invest	507.70	1.35%	289156	BPCL	367.65	-3.48%	5504776
Engineers India	217.51	1.34%	23294428	DLF	620.50	-3.42%	2131481
Aster DM Health	636.80	1.21%	418792	Cohance Life	315.10	-3.30%	1189373
Aurobindo Pharm	1,171.40	1.02%	3474033	Elecon Eng	424.95	-3.22%	198281
Biocon	382.65	0.98%	2784675	Angel One	2509.6	-3.17%	853213
Aadhar Housing	476.00	0.91%	323130	BASF	3550.5	-3.16%	25976

Nifty Smallcap-250 stocks

Nifty Midcap-100 stocks


Nifty Daily chart with RSI indicator



BankNifty Daily chart with RSI indicator

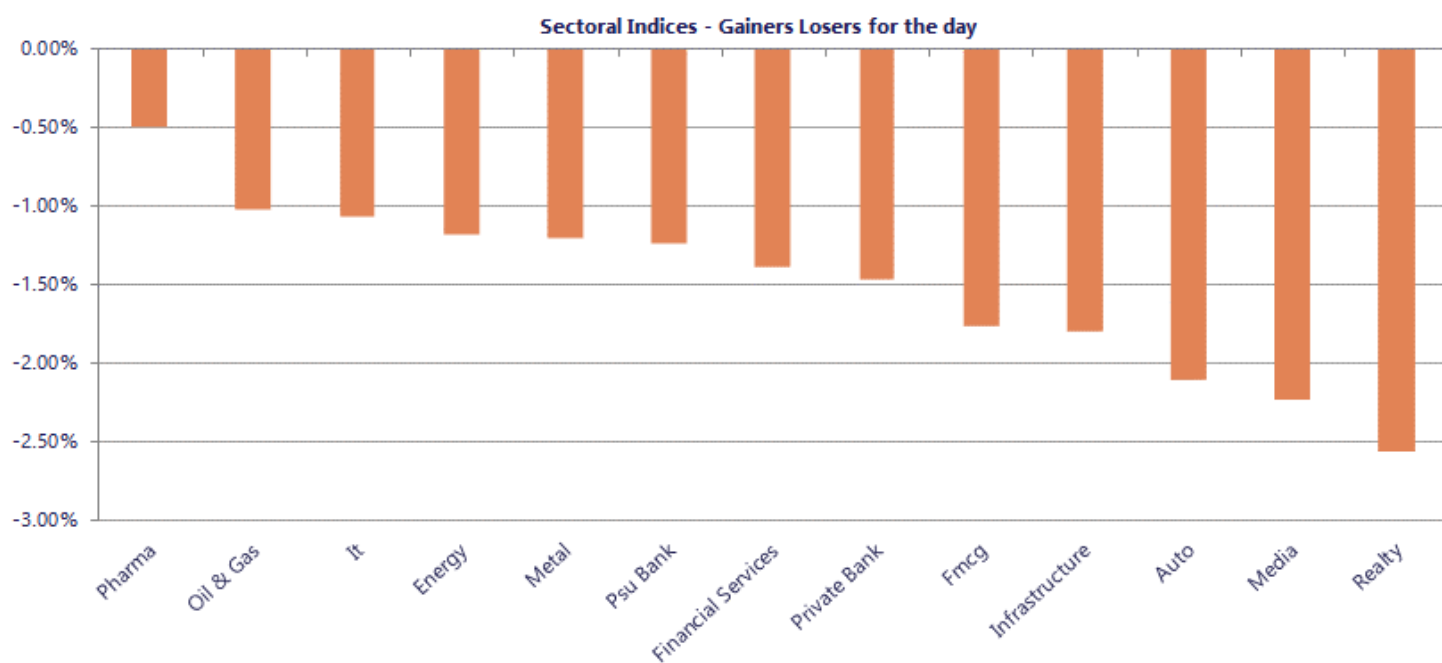


Breakouts - Cross above 200 DMA			
Company Name	LCP	Change %	200 DMA
Nitin Spinners	376.95	8.14	348.59
Datamatics Glob	842.85	5.57	798.35
Party	84	3.54	81.13
Tera Software	390.25	2.90	379.24
Hemisphere	143.79	2.40	140.42
Karnika Industr	146.85	2.27	143.59
AYM Syntex	197.26	1.87	193.64
Digikore Studio	81.9	0.99	81.1
Macpower	917.6	0.42	913.78
TCI Finance	15.1	0.27	15.06

Breakdown - Cross below 200 DMA			
Company Name	LCP	Change %	200 DMA
Sejal Glass	633.55	-4.71	664.9
Graphisads	38.85	-3.38	40.21
NIITMTS	342.75	-3.34	354.6
Mamata Machiner	415	-3.23	428.84
Prudent Advisor	2569.4	-3.07	2650.72
Ishan Dyes	58.07	-3.01	59.87
Mukand	127.52	-2.60	130.93
Shyam Metalics	857.6	-2.53	879.89
PVR INOX	1023.55	-2.35	1048.16
Talbro's Auto	275.7	-2.29	282.15
Aries Agro	344.3	-2.22	352.11
Steel Str Wheel	218.11	-2.22	223.07
Diamond Power	134.5	-2.22	137.55
Vishnusurya Pro	169	-2.17	172.75
Adani Green Ene	976.5	-1.98	996.23
Repco Home	394.9	-1.96	402.78
Allied Blenders	506.05	-1.81	515.38
RSWM	153.7	-1.79	156.5

* Stocks crossing above its Simple Moving Average (200DMA)

* Stocks crossing below its Simple Moving Average (200DMA)



Nifty 50 stocks - Summary Details											
Symbol	LTP	Chng	% Chng	Volume (lacs)	Turnover (crs.)	52w High	Diff with 52w H	52w Low	Diff with 52w L	30 days % chng	365 days % chng
NIFTY 50	25454.35	-365.00	-1.41%	3336.02	24752.31	26373.20	3.48%	21743.65	17.07%	-0.51%	10.99%
ADANIENT	2159.00	-52.20	-2.36%	11.01	239.57	2616.50	17.49%	1848.00	16.83%	1.14%	1.97%
ADANIPTS	1511.70	-39.10	-2.52%	9.84	150.43	1583.90	4.56%	1036.50	45.85%	7.75%	39.60%
APOLLOHOSP	7551.50	-96.00	-1.26%	1.87	141.97	8099.50	6.77%	6001.00	25.84%	5.87%	17.58%
ASIANPAINT	2391.60	-40.50	-1.67%	9.71	233.60	2985.70	19.90%	2124.75	12.56%	-13.16%	6.81%
AXISBANK	1351.00	-26.00	-1.89%	27.45	374.42	1418.30	4.75%	986.55	36.94%	3.33%	33.58%
BAJAJ-AUTO	9721.50	-258.50	-2.59%	3.11	306.63	10059.50	3.36%	7089.35	37.13%	3.10%	14.65%
BAJAJFINSV	2040.00	-20.60	-1.00%	6.59	134.52	2195.00	7.06%	1733.00	17.71%	1.10%	8.78%
BAJFINANCE	1007.00	-16.80	-1.64%	98.64	1005.94	1102.50	8.66%	821.13	22.64%	3.87%	19.32%
BEL	435.00	-12.70	-2.84%	97.80	430.59	461.65	5.77%	240.25	81.06%	4.14%	71.67%
BHARTIARTL	1981.70	-40.10	-1.98%	47.12	941.45	2174.50	8.87%	1559.50	27.07%	-1.41%	20.45%
CIPLA	1329.00	-20.80	-1.54%	5.87	78.67	1673.00	20.56%	1281.70	3.69%	-4.55%	-9.23%
COALINDIA	415.60	-2.40	-0.57%	38.24	159.38	461.55	9.96%	352.40	17.93%	-3.38%	14.71%
DRREDDY	1277.60	-2.70	-0.21%	13.34	171.66	1379.70	7.40%	1020.00	25.25%	9.46%	9.59%
EICHERMOT	7890.00	-119.50	-1.49%	4.25	340.20	8140.00	3.07%	4677.05	68.70%	7.74%	64.01%
ETERNAL	270.80	-6.55	-2.36%	239.69	658.56	368.45	26.50%	194.80	39.01%	-3.75%	15.68%
GRASIM	2861.40	-72.40	-2.47%	3.88	112.22	2979.00	3.95%	2301.65	24.32%	2.93%	16.17%
HCLTECH	1452.30	-14.90	-1.02%	23.97	353.14	1780.10	18.41%	1302.75	11.48%	-15.41%	-15.18%
HDFCBANK	914.30	-10.40	-1.12%	212.07	1948.65	1020.50	10.41%	830.55	10.08%	-1.47%	5.87%
HDFCLIFE	734.35	4.75	0.65%	28.75	210.48	820.75	10.53%	600.35	22.32%	-0.33%	17.90%
HINDALCO	904.55	5.30	0.59%	35.22	320.61	1029.80	12.16%	546.45	65.53%	-3.77%	44.43%
HINDUNILVR	2282.00	-41.50	-1.79%	9.40	215.98	2750.00	17.02%	2136.00	6.84%	-5.46%	1.40%
ICICIBANK	1388.70	-19.50	-1.38%	143.23	1998.02	1500.00	7.42%	1200.10	15.72%	0.59%	10.07%
INDIGO	4817.10	-163.30	-3.28%	15.46	752.70	6232.50	22.71%	4255.00	13.21%	-2.52%	9.48%
INFY	1366.50	-7.20	-0.52%	145.73	2019.56	1861.65	26.60%	1281.50	6.63%	-18.72%	-24.54%
ITC	325.80	-6.65	-2.00%	199.08	654.97	444.20	26.65%	302.00	7.88%	-2.22%	-19.83%
JIOFIN	257.90	-6.20	-2.35%	84.80	220.98	338.60	23.83%	198.65	29.83%	-6.44%	12.66%
JSWSTEEL	1225.10	-26.10	-2.09%	8.24	101.88	1264.00	3.08%	905.20	35.34%	3.46%	25.35%
KOTAKBANK	417.10	-9.25	-2.17%	64.72	271.92	460.38	9.40%	378.78	10.12%	-2.30%	5.06%
LT	4273.90	-52.00	-1.20%	20.07	861.63	4335.00	1.41%	2965.30	44.13%	10.44%	30.46%
M&M	3427.00	-103.50	-2.93%	24.79	859.18	3839.90	10.75%	2425.00	41.32%	-6.30%	24.28%
MARUTI	14880.00	-284.00	-1.87%	1.53	230.23	17370.00	14.34%	11059.45	34.55%	-8.01%	17.29%
MAXHEALTH	1075.00	-11.25	-1.04%	23.36	252.69	1314.30	18.21%	933.80	15.12%	6.06%	5.44%
NESTLEIND	1278.00	-22.90	-1.76%	6.59	84.59	1340.40	4.66%	1055.00	21.14%	-2.86%	15.92%
NTPC	363.20	-5.20	-1.41%	53.75	196.32	372.00	2.37%	297.50	22.08%	5.78%	15.37%
ONGC	274.25	9.65	3.65%	377.22	1028.10	280.30	2.16%	205.00	33.78%	12.81%	15.09%
POWERGRID	293.55	-7.00	-2.33%	75.52	223.82	322.00	8.84%	247.30	18.70%	13.93%	11.59%
RELIANCE	1407.20	-34.10	-2.37%	118.83	1682.50	1611.80	12.69%	1114.85	26.22%	-0.45%	14.64%
SBILIFE	2045.00	-14.60	-0.71%	4.20	86.00	2109.60	3.06%	1379.85	48.20%	-1.38%	38.59%
SBIN	1203.00	-15.90	-1.30%	96.27	1166.37	1225.50	1.84%	680.00	76.91%	15.85%	65.41%
SHRIRAMFIN	1050.70	-25.50	-2.37%	25.76	274.05	1088.30	3.45%	539.10	94.90%	3.99%	88.37%
SUNPHARMA	1710.10	-14.30	-0.83%	11.43	196.63	1851.20	7.62%	1548.00	10.47%	2.07%	2.00%
TATACONSUM	1162.10	-7.60	-0.65%	9.94	115.40	1220.90	4.82%	930.10	24.94%	-1.53%	13.34%
TMPV	375.20	-7.65	-2.00%	69.09	263.22	744.00	49.57%	335.60	11.80%	9.07%	-44.90%
TATASTEEL	205.20	-3.83	-1.83%	277.45	576.94	211.39	2.93%	125.30	63.77%	8.99%	51.15%
TCS	2675.00	-19.90	-0.74%	32.37	877.10	3924.40	31.84%	2585.00	3.48%	-15.44%	-29.31%
TECHM	1475.50	-29.30	-1.95%	11.08	166.15	1854.00	20.42%	1209.40	22.00%	-14.13%	-12.47%
TITAN	4197.50	-51.10	-1.20%	4.06	171.64	4378.40	4.13%	2925.00	43.50%	1.29%	30.75%
TRENT	4069.90	-117.30	-2.80%	5.87	239.69	6261.00	35.00%	3645.00	11.66%	3.15%	-18.46%
ULTRACEMCO	12664.00	-388.00	-2.97%	1.95	249.41	13110.00	3.40%	10047.85	26.04%	2.98%	12.15%
WIPRO	210.72	-1.23	-0.58%	141.49	301.03	316.50	33.42%	209.01	0.82%	-14.32%	-32.91%

Disclaimer / Disclosures

ANALYST CERTIFICATION

I, Mrs. Vaishali Parekh B.com, Research Analyst, author and the name subscribed to this report, hereby certify that all of the views expressed in this research report accurately reflect our views about the subject issuer(s) or securities. We also certify that no part of our compensation was, is, or will be directly or indirectly related to the specific recommendation(s) or view(s) in this report.

Terms & conditions and other disclosures:

Prabhudas Lilladher Pvt. Ltd, Mumbai, India (hereinafter referred to as "PL") is engaged in the business of Stock Broking, Portfolio Manager, Depository Participant and distribution for third party financial products. PL is a subsidiary of Prabhudas Lilladher Advisory Services Pvt Ltd. which has its various subsidiaries engaged in business of commodity broking, investment banking, financial services (margin funding) and distribution of third party financial/other products, details in respect of which are available at www.plindia.com

This document has been prepared by the Research Division of PL and is meant for use by the recipient only as information and is not for circulation. This document is not to be reported or copied or made available to others without prior permission of PL. It should not be considered or taken as an offer to sell or a solicitation to buy or sell any security.

The information contained in this report has been obtained from sources that are considered to be reliable. However, PL has not independently verified the accuracy or completeness of the same. Neither PL nor any of its affiliates, its directors or its employees accepts any responsibility of whatsoever nature for the information, statements and opinion given, made available or expressed herein or for any omission therein.

Recipients of this report should be aware that past performance is not necessarily a guide to future performance and value of investments can go down as well. The suitability or otherwise of any investments will depend upon the recipient's particular circumstances and, in case of doubt, advice should be sought from an independent expert/advisor.

Either PL or its affiliates or its directors or its employees or its representatives or its clients or their relatives may have position(s), make market, act as principal or engage in transactions of securities of companies referred to in this report and they may have used the research material prior to publication.

PL may from time to time solicit or perform investment banking or other services for any company mentioned in this document.

PL is registered as Research Analyst under Securities and Exchange Board of India (Research Analysts) Regulations, 2014 PL submits that no material disciplinary action has been taken on us by any Regulatory Authority impacting Equity Research Analysis activities.

PL or its research analysts or its associates or his relatives do not have any financial interest in the subject company.

PL or its research analysts or its associates or his relatives do not have actual/beneficial ownership of one per cent or more securities of the subject company at the end of the month immediately preceding the date of publication of the research report.

PL or its research analysts or its associates or his relatives do not have any material conflict of interest at the time of publication of the research report.

PL or its associates might have received compensation from the subject company in the past twelve months.

PL or its associates might have managed or co-managed public offering of securities for the subject company in the past twelve months or mandated by the subject company for any other assignment in the past twelve months.

PL or its associates might have received any compensation for investment banking or merchant banking or brokerage services from the subject company in the past twelve months.

PL or its associates might have received any compensation for products or services other than investment banking or merchant banking or brokerage services from the subject company in the past twelve months PL or its associates might have received any compensation or other benefits from the subject company or third party in connection with the research report.

PL encourages independence in research report preparation and strives to minimize conflict in preparation of research report. PL or its analysts did not receive any compensation or other benefits from the subject Company or third party in connection with the preparation of the research report. PL or its Research Analysts do not have any material conflict of interest at the time of publication of this report.

It is confirmed that Mrs. Vaishali Parekh B.com, Research Analyst of this report has not received any compensation from the companies mentioned in the report in the preceding twelve months compensation of our Research Analysts is not based on any specific merchant banking, investment banking or brokerage service transactions.

The Research analysts for this report certifies that all of the views expressed in this report accurately reflect his or her personal views about the subject company or companies and its or their securities, and no part of his or her compensation was, is or will be, directly or indirectly related to specific recommendations or views expressed in this report.

The research analysts for this report has not served as an officer, director or employee of the subject company PL or its research analysts have not engaged in market making activity for the subject company

Our sales people, traders, and other professionals or affiliates may provide oral or written market commentary or trading strategies to our clients that reflect opinions that are contrary to the opinions expressed herein, and our proprietary trading and investing businesses may make investment decisions that are inconsistent with the recommendations expressed herein. In reviewing these materials, you should be aware that any or all of the foregoing, among other things, may give rise to real or potential conflicts of interest.

PL and its associates, their directors and employees may (a) from time to time, have a long or short position in, and buy or sell the securities of the subject company or (b) be engaged in any other transaction involving such securities and earn brokerage or other compensation or act as a market maker in the financial instruments of the subject company or act as an advisor or lender/borrower to the subject company or may have any other potential conflict of interests with respect to any recommendation and other related information and opinions.

Regd. Office: 3rd Floor, Sadhana House, 570, P. B. Marg, Behind Mahindra Tower, Worli, Mumbai - 400 018, India.