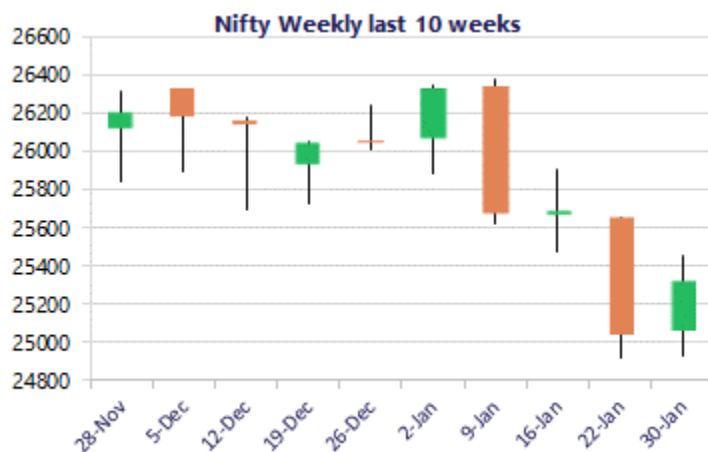
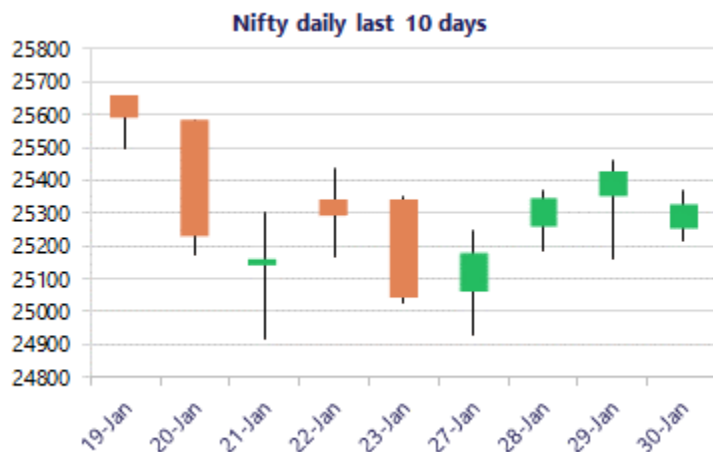


Date: 1<sup>st</sup> February 2026

\* Sensex 82269.78 - 296.59

\* Nifty 25320.65 - 98.25

\* Bank Nifty 59610.45 - 395.10



\*Blue candle → Close rate > Open rate \* Red candle → Close rate < Open rate

## Market Preview

### Nifty consolidates near 25300 zone

Nifty amid fluctuations witnessed a rangebound session closing in the red near 25300 level with the market players eagerly awaiting the Budget session outcomes. BankNifty witnessed a lull session after the weak opening to end in the red near 59600 zone. The market breadth was overall shifted towards the positive side with the advance decline indicating a ratio of 3:2 at close.

## Market Forecast

### Nifty daily range 25200-25500

Nifty, after witnessing a gap down opening, remained rangebound with some fluctuations happening sustaining above the important support at the 200 period MA of 25200 zone and all eyes are awaiting the budget session outcome which shall decide the further course of the market direction in the coming days. The index, as mentioned earlier, shall have the important support of the long-term trendline zone at 25000 level which needs to be sustained and, on the upside, would need to breach above the 25700 zone of the 50EMA level.

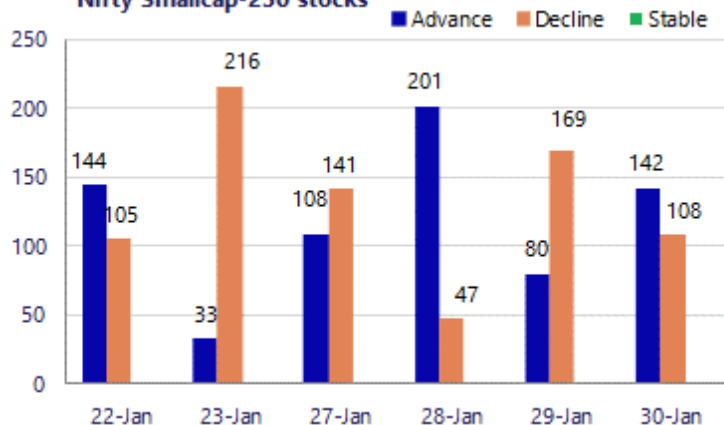
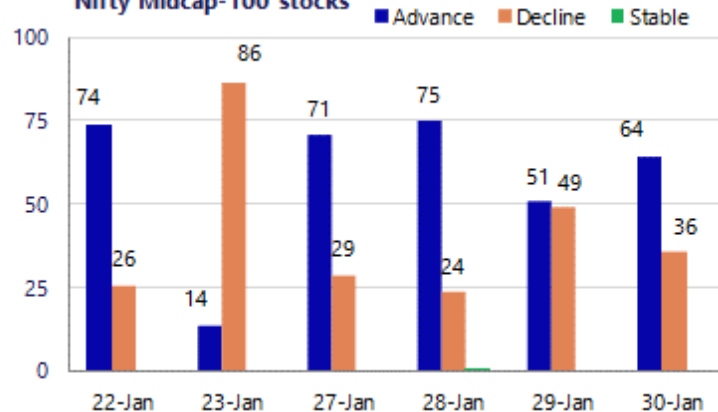
BankNifty witnessed a rangebound session after the weak opening and sustained above the 59500-level finding resistance near the 59850-zone awaiting further developments resulting from the budget session outcome. The index would have the near-term support at 58800 zone whereas on the upside, the 60300 zone would be the resistance barrier which needs to be breached to trigger for fresh upward move in the coming days.

The support for the day is seen at 25200 levels, while the resistance is seen at 25500 levels. BankNifty would have the daily range of 59200-60200 levels.

Sensex	Period	Closing	% Chng	Trend	Reversal	2 Sup	1 Sup	Pivot	1 Res	2 Res
Nifty	Daily	25320.65	-0.39%	4	25096.70	25145	25233	25302	25390	25459
	Weekly	25320.65	1.09%	-4	25847.85	24714	25017	25236	25540	25759
	Monthly	25320.65	-3.10%	-1	25950.25	24084	24703	25538	26156	26991
Bank Nifty	Daily	59610.45	-0.58%	3	59223.90	59268	59439	59673	59844	60078
	Weekly	59610.45	1.95%	-4	60432.00	57338	58474	59266	60403	61195
	Monthly	59610.45	0.05%	4	58708.15	57085	58348	59393	60655	61700
Sensex	Daily	82269.78	-0.36%	3	81606.60	81724	81997	82214	82487	82704
	Weekly	82269.78	0.90%	-4	84040.75	80425	81347	82018	82940	83611
	Monthly	82269.78	-3.46%	-1	84767.90	78295	80283	83083	85070	87870

**Gainers - Losers ( Nifty 500 Stocks )**

Gainers				Losers			
Company Name	Last Price	% Gain	Volume	Company Name	Last Price	% Loss	Volume
Raymond Life	1047.9	13.73%	1039.81	Hind Zinc	628.50	-12.12%	656.93
Vodafone Idea	11.17	11.14%	10.98	Vedanta	681.55	-11.07%	705.38
RHI Magnesita	445.1	8.03%	441.31	NALCO	385.45	-10.12%	393.16
SignatureGlobal	901.20	7.68%	910.05	Hind Copper	685.90	-9.76%	699.39
TataTeleservice	45.66	7.26%	46.16	Graphite India	617.30	-7.40%	631.04
Garden Reach Sh	2,764.20	6.93%	2721.81	NTPC Green Ener	86.17	-6.67%	87.46
Triveni Engg	375.40	6.92%	369.65	Guj Mineral	577.75	-6.57%	590.85

**Nifty Smallcap-250 stocks**

**Nifty Midcap-100 stocks**


## Nifty Daily chart with RSI indicator



## BankNifty Daily chart with RSI indicator



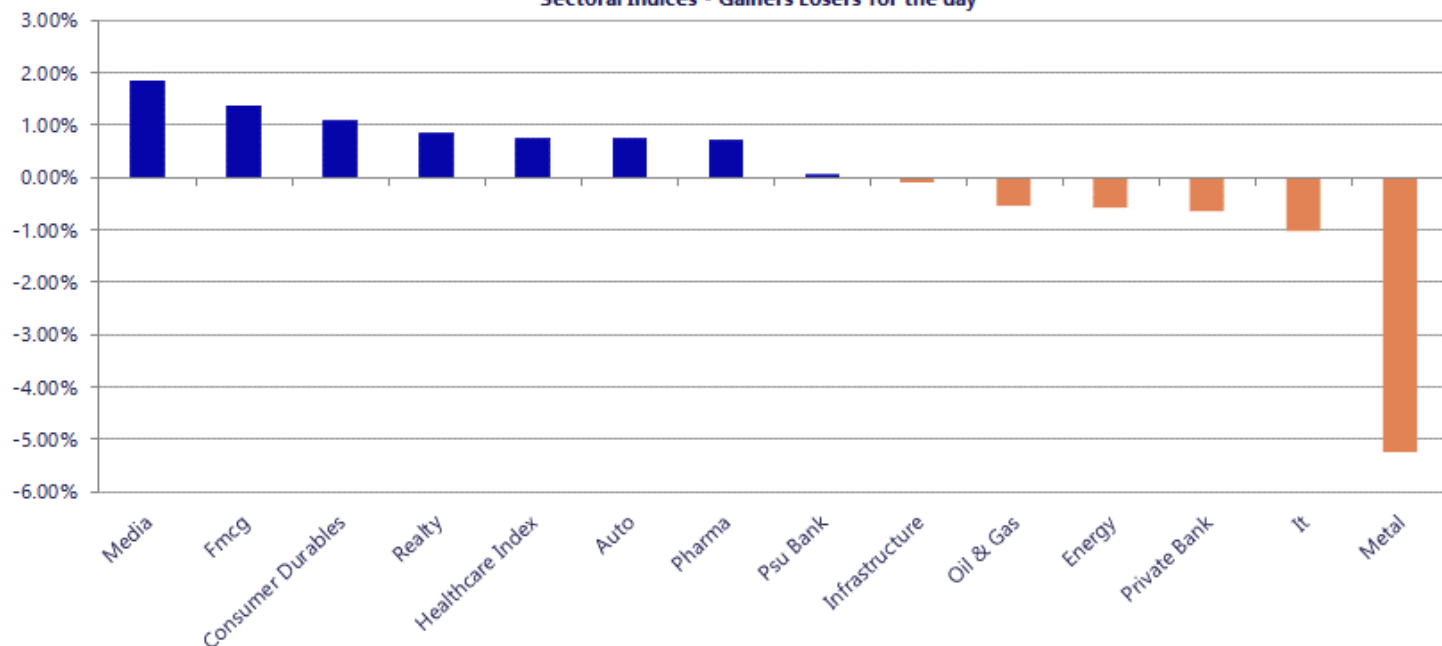
Breakouts - Cross above 200 DMA			
Company Name	LCP	Change %	200 DMA
Apex Ecotech	130	6.40	122.18
Sampann Utpadan	33.09	5.11	31.48
Good Luck	1118.7	4.65	1068.98
Strides Pharma	877	4.26	841.19
Rockingdeals	220	3.97	211.59
Mangalam Cement	784.6	3.91	755.11
Tatva Chintan	1154.2	3.76	1112.42
CreditAccess Gr	1326.5	3.69	1279.25
Sterlite Techno	106.35	3.05	103.2
BLACK BOX	515.2	2.80	501.16
UNO Minda	1182.3	2.12	1157.78
Divgi Torqtrans	614.1	2.02	601.94
Hitachi Energy	18862	2.00	18491.9
Iris Clothings	32.25	1.96	31.63
Antony Waste	564	1.72	554.45
Suryoday Small	138.55	1.70	136.23
Blue Star	1816.9	1.56	1788.92
Britannia	5860.5	1.46	5776.45

\* Stocks crossing above its Simple Moving Average (200DMA)

Breakdown - Cross below 200 DMA			
Company Name	LCP	Change %	200 DMA
Home First	1178.7	-3.52	1221.66
Aarey Drugs	67.6	-2.92	69.63
Shah Alloys	63.52	-2.25	64.98
Party	80.5	-1.82	81.99
UFO Moviez	73.44	-1.81	74.79
Rajputana Indus	80	-1.68	81.37
Angel One	2540.9	-1.59	2582.02
Dynamic Service	135.95	-1.58	138.13
Manorama Indust	1350.7	-1.49	1371.17
Voltas	1327.9	-1.35	1346.1
Mason Infratech	174	-1.32	176.32
Nazara	284.4	-1.24	287.97
Adani Trans	894.8	-0.68	900.95
HINDPETRO	427	-0.41	428.77
UTI Nifty Next	72.27	-0.40	72.56
UTI NIF10GETF	25.84	-0.35	25.93
Balaji Phosphat	140	-0.32	140.45
Mukand	128.25	-0.29	128.62

\* Stocks crossing below its Simple Moving Average (200DMA)

Sectoral Indices - Gainers Losers for the day



Stocks witnessing a volume surge as compared to their 5 day average

Watch out for the stocks that have seen a huge spurt in its share price over the last three days

Volume Shockers - NSE					
Company name	LCP	% Chg	Volume	Avg Vol *	% Chg
Five-Star Busin	455.25	2.79	1201853	16611	7135
Syrma SGS	761.05	4.91	780308	15973	4785
Walchandnagar	188.25	8.97	2741365	58073	4621
Delhivery	422.5	2.61	1423776	32308	4307
RamkrishnaForge	511.55	0.78	429280	13497	3080
SignatureGlobal	901.05	7.68	626889	22638	2669
Rajasthan Secu	32.8	-1.62	1034126	47989	2055
Craftsman	7312.7	0.06	21835	1098	1888
Sigma Solve	48.15	-4.29	19773	1373	1340
Modern Eng	31.54	3.96	23892	1793	1233
MTAR	2932.85	7	177900	13418	1226
Supreme Ind	3511.5	0.1	89378	6894	1196
Max Healthcare	957.05	0.47	293877	24814	1084
JNK India	228.4	7.71	19383	1670	1061
Raymond Realty	505.8	17.76	153049	13699	1017
Netweb	3145.15	2.43	147927	13602	988
Super Sales	581.5	-3.75	10703	1018	952
Khadim India	174.85	1.19	24615	2339	952
Strides Pharma	877.65	8.49	325079	33518	870
CreditAccess Gr	1324.4	4.46	131836	14933	783
Vibrant Global	35.99	-0.33	41657	5225	697

Price Shockers - NSE					
Company name	LCP	Prv Close	% Chg	Volume	
Jai Hind Synth	55.26	39.76	38.98	45916	
Shiv Texchem	122.45	100.5	21.84	28800	
Gokak Textiles	80.3	66.61	20.55	43754	
VMS Industries	30.52	25.42	20.06	203909	
Sharda Crop	1039.75	870.5	19.44	319075	
Raymond Realty	505.8	424.3	19.21	153049	
Colinz Labs	79.01	66.6	18.63	106261	
Balu Forge Indu	422.35	356.05	18.62	311676	
Cubex Tubings	128.05	108.45	18.07	220536	
JITF Infralogis	289.4	246.3	17.5	10671	
Taneja Aerospac	298.7	255.45	16.93	58788	
Resonance	107.85	92.75	16.28	17193	
SPEL Semiconduc	170.8	147.2	16.03	352428	
Panorama Studio	44.67	38.63	15.64	299610	
KIC Metaliks	30.17	26.35	14.5	42027	
Shivam Chemical	80.98	71	14.06	73500	
Jupiter Infomed	37.69	33.2	13.52	21067	
Organic Recycli	247	218.65	12.97	31200	
Dredging Corp	1127.9	999.8	12.81	121501	
Wanbury	208.4	185	12.65	18050	
Gillette India	8796.7	7860.85	11.91	15758	



Nifty 50 Stocks - Summary Details											
Symbol	LTP	Chng	% Chng	Volume (lacs)	Turnover (crs.)	52w High	Diff with 52w H	52w Low	Diff with 52w L	365 days % chng	30 days % chng
NIFTY 50	25320.65	-98.25	-0.39%	5083.89	40772	26373	3.99%	21744	16.45%	-2.02%	10.72%
ADANIENT	2020.00	0.80	0.04%	12.31	249	2617	22.80%	1848	9.31%	-8.77%	-12.86%
ADANIPTS	1417.00	-0.80	-0.06%	22.27	316	1549	8.52%	1011	40.19%	-2.83%	29.43%
APOLLOHOSP	6950.00	149.00	2.19%	4.89	339	8100	14.19%	6001	15.81%	-0.42%	2.60%
ASIANPAINT	2431.00	15.00	0.62%	20.49	497	2986	18.58%	2125	14.41%	-11.96%	9.23%
AXISBANK	1366.90	3.20	0.23%	147.58	2023	1379	0.86%	975	40.22%	9.98%	39.35%
BAJAJ-AUTO	9584.00	72.00	0.76%	2.84	271	9888	3.07%	7089	35.19%	3.40%	11.26%
BAJAJFINSV	1953.70	5.60	0.29%	13.42	261	2195	10.99%	1617	20.82%	-3.64%	9.06%
BAJFINANCE	930.85	-4.30	-0.46%	101.51	945	1103	15.57%	757	22.98%	-6.01%	-88.02%
BEL	449.25	4.75	1.07%	366.85	1643	458	1.80%	240	86.99%	14.16%	68.04%
BHARTIARTL	1968.80	0.90	0.05%	76.84	1508	2175	9.46%	1560	26.25%	-6.24%	23.01%
CIPLA	1325.00	4.10	0.31%	21.58	285	1673	20.80%	1282	3.38%	-11.29%	-7.02%
COALINDIA	440.00	-15.75	-3.46%	101.92	450	462	4.67%	349	25.98%	10.74%	16.15%
DRREDDY	1213.20	4.30	0.36%	16.72	204	1380	12.07%	1020	18.94%	-3.77%	3.12%
EICHERMOT	7129.50	73.00	1.03%	4.55	322	7614	6.36%	4646	53.45%	-0.97%	37.42%
ETERNAL	273.50	-1.85	-0.67%	437.52	1197	368	25.77%	195	40.40%	-1.26%	#VALUE!
GRASIM	2816.10	-15.60	-0.55%	10.84	306	2978	5.43%	2302	22.35%	-0.80%	14.89%
HCLTECH	1691.40	-30.20	-1.75%	44.49	755	1753	3.49%	1303	29.83%	4.98%	-1.36%
HDFCBANK	929.00	-6.50	-0.69%	296.91	2767	1021	8.97%	831	11.85%	-6.22%	-44.60%
HDFCLIFE	729.50	2.40	0.33%	36.72	268	821	11.12%	595	22.55%	-1.62%	16.34%
HINDALCO	962.80	-61.25	-5.98%	119.77	1160	1030	6.51%	546	76.19%	8.87%	64.80%
HINDUNILVR	2365.00	12.40	0.53%	20.90	495	2750	14.00%	2136	10.72%	3.62%	-0.46%
ICICIBANK	1357.00	-26.60	-1.92%	240.14	3279	1500	9.53%	1200	13.07%	0.93%	8.26%
INDIGO	4605.00	-16.00	-0.35%	15.67	722	6233	26.11%	4158	10.75%	-8.40%	7.05%
INFY	1642.70	-16.80	-1.01%	92.08	1505	1924	14.62%	1307	25.68%	1.20%	-12.77%
ITC	322.30	3.70	1.16%	419.76	1351	472	31.64%	316	1.85%	-19.58%	-25.66%
JIOFIN	254.00	-0.50	-0.20%	134.49	342	339	24.99%	199	27.86%	-12.99%	6.80%
JSWSTEEL	1214.20	-23.30	-1.88%	28.77	349	1245	2.47%	905	34.14%	9.25%	29.52%
KOTAKBANK	407.50	-4.90	-1.19%	206.82	844	460	11.49%	374	8.86%	-81.05%	-78.75%
LT	3935.00	2.10	0.05%	22.08	866	4195	6.20%	2965	32.70%	-2.95%	13.99%
M&M	3444.30	59.90	1.77%	52.91	1796	3840	10.30%	2425	42.03%	-6.24%	17.35%
MARUTI	14580.00	78.00	0.54%	9.47	1372	17370	16.06%	11059	31.83%	-12.30%	21.88%
MAXHEALTH	957.20	4.60	0.48%	56.38	538	1314	27.17%	940	1.83%	-8.07%	-6.65%
NESTLEIND	1332.50	44.60	3.46%	52.92	700	1340	0.53%	1055	26.30%	4.58%	-38.90%
NTPC	354.10	-4.05	-1.13%	226.41	803	371	4.67%	293	20.94%	9.57%	10.82%
ONGC	268.06	-7.33	-2.66%	244.20	660	278	3.50%	205	30.76%	14.61%	6.98%
POWERGRID	255.95	-4.55	-1.75%	232.93	598	322	20.51%	247	3.50%	-1.48%	-10.89%
RELIANCE	1397.00	6.00	0.43%	112.40	1564	1612	13.33%	1115	25.31%	-9.38%	12.94%
SBILIFE	2009.90	13.60	0.68%	20.51	409	2110	4.73%	1373	46.44%	0.15%	36.80%
SBIN	1077.00	10.80	1.01%	94.81	1019	1083	0.51%	680	58.38%	10.65%	42.02%
SHRIRAMFIN	1020.00	-2.80	-0.27%	64.65	659	1029	0.90%	516	97.67%	4.15%	84.28%
SUNPHARMA	1595.00	5.70	0.36%	39.62	632	1851	13.84%	1548	3.04%	-7.26%	-8.07%
TATACONSUM	1132.00	24.80	2.24%	25.70	291	1221	7.28%	930	21.71%	-3.83%	18.05%
TATASTEEL	192.58	-9.74	-4.81%	522.63	1011	203	5.13%	125	53.70%	9.86%	47.65%
TCS	3129.00	-15.40	-0.49%	30.22	943	4150	24.60%	2867	9.15%	-3.79%	-23.80%
TECHM	1735.20	-33.20	-1.88%	16.73	291	1777	2.33%	1209	43.48%	8.63%	3.68%
TITAN	3982.10	42.40	1.08%	14.28	566	4312	7.65%	2925	36.14%	0.08%	18.00%
TMPV	349.25	-2.55	-0.72%	99.10	347	755	53.74%	336	4.07%	-3.23%	#VALUE!
TRENT	3766.00	-57.80	-1.51%	10.70	405	6270	39.94%	3693	1.97%	-10.03%	-32.37%
ULTRACEMCO	12710.00	-7.00	-0.06%	2.97	376	13097	2.95%	10048	26.49%	8.45%	9.95%
WIPRO	236.45	-3.35	-1.40%	113.62	269	324	26.93%	228	3.71%	-10.15%	-24.18%

## Disclaimer / Disclosures

### ANALYST CERTIFICATION

I, Mrs. Vaishali Parekh B.com, Research Analyst, author and the name subscribed to this report, hereby certify that all of the views expressed in this research report accurately reflect our views about the subject issuer(s) or securities. We also certify that no part of our compensation was, is, or will be directly or indirectly related to the specific recommendation(s) or view(s) in this report.

Terms & conditions and other disclosures:

Prabhudas Lilladher Pvt. Ltd, Mumbai, India (hereinafter referred to as "PL") is engaged in the business of Stock Broking, Portfolio Manager, Depository Participant and distribution for third party financial products. PL is a subsidiary of Prabhudas Lilladher Advisory Services Pvt Ltd. which has its various subsidiaries engaged in business of commodity broking, investment banking, financial services (margin funding) and distribution of third party financial/other products, details in respect of which are available at [www.plindia.com](http://www.plindia.com)

This document has been prepared by the Research Division of PL and is meant for use by the recipient only as information and is not for circulation. This document is not to be reported or copied or made available to others without prior permission of PL. It should not be considered or taken as an offer to sell or a solicitation to buy or sell any security.

The information contained in this report has been obtained from sources that are considered to be reliable. However, PL has not independently verified the accuracy or completeness of the same. Neither PL nor any of its affiliates, its directors or its employees accepts any responsibility of whatsoever nature for the information, statements and opinion given, made available or expressed herein or for any omission therein.

Recipients of this report should be aware that past performance is not necessarily a guide to future performance and value of investments can go down as well. The suitability or otherwise of any investments will depend upon the recipient's particular circumstances and, in case of doubt, advice should be sought from an independent expert/advisor.

Either PL or its affiliates or its directors or its employees or its representatives or its clients or their relatives may have position(s), make market, act as principal or engage in transactions of securities of companies referred to in this report and they may have used the research material prior to publication.

PL may from time to time solicit or perform investment banking or other services for any company mentioned in this document.

PL is registered as Research Analyst under Securities and Exchange Board of India (Research Analysts) Regulations, 2014 PL submits that no material disciplinary action has been taken on us by any Regulatory Authority impacting Equity Research Analysis activities.

PL or its research analysts or its associates or his relatives do not have any financial interest in the subject company.

PL or its research analysts or its associates or his relatives do not have actual/beneficial ownership of one per cent or more securities of the subject company at the end of the month immediately preceding the date of publication of the research report.

PL or its research analysts or its associates or his relatives do not have any material conflict of interest at the time of publication of the research report.

PL or its associates might have received compensation from the subject company in the past twelve months.

PL or its associates might have managed or co-managed public offering of securities for the subject company in the past twelve months or mandated by the subject company for any other assignment in the past twelve months.

PL or its associates might have received any compensation for investment banking or merchant banking or brokerage services from the subject company in the past twelve months.

PL or its associates might have received any compensation for products or services other than investment banking or merchant banking or brokerage services from the subject company in the past twelve months PL or its associates might have received any compensation or other benefits from the subject company or third party in connection with the research report.

PL encourages independence in research report preparation and strives to minimize conflict in preparation of research report. PL or its analysts did not receive any compensation or other benefits from the subject Company or third party in connection with the preparation of the research report. PL or its Research Analysts do not have any material conflict of interest at the time of publication of this report.

It is confirmed that Mrs. Vaishali Parekh B.com, Research Analyst of this report has not received any compensation from the companies mentioned in the report in the preceding twelve months compensation of our Research Analysts is not based on any specific merchant banking, investment banking or brokerage service transactions.

The Research analysts for this report certifies that all of the views expressed in this report accurately reflect his or her personal views about the subject company or companies and its or their securities, and no part of his or her compensation was, is or will be, directly or indirectly related to specific recommendations or views expressed in this report.

The research analysts for this report has not served as an officer, director or employee of the subject company PL or its research analysts have not engaged in market making activity for the subject company

Our sales people, traders, and other professionals or affiliates may provide oral or written market commentary or trading strategies to our clients that reflect opinions that are contrary to the opinions expressed herein, and our proprietary trading and investing businesses may make investment decisions that are inconsistent with the recommendations expressed herein. In reviewing these materials, you should be aware that any or all of the foregoing, among other things, may give rise to real or potential conflicts of interest.

PL and its associates, their directors and employees may (a) from time to time, have a long or short position in, and buy or sell the securities of the subject company or (b) be engaged in any other transaction involving such securities and earn brokerage or other compensation or act as a market maker in the financial instruments of the subject company or act as an advisor or lender/borrower to the subject company or may have any other potential conflict of interests with respect to any recommendation and other related information and opinions.

**Regd. Office:** 3<sup>rd</sup> Floor, Sadhana House, 570, P. B. Marg, Behind Mahindra Tower, Worli, Mumbai - 400 018, India.