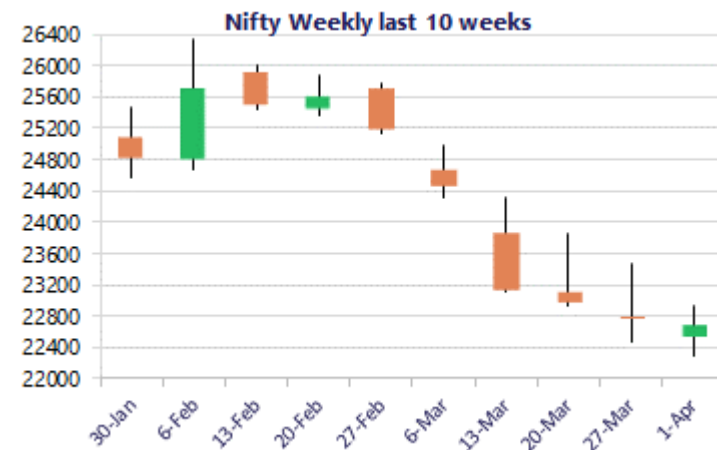
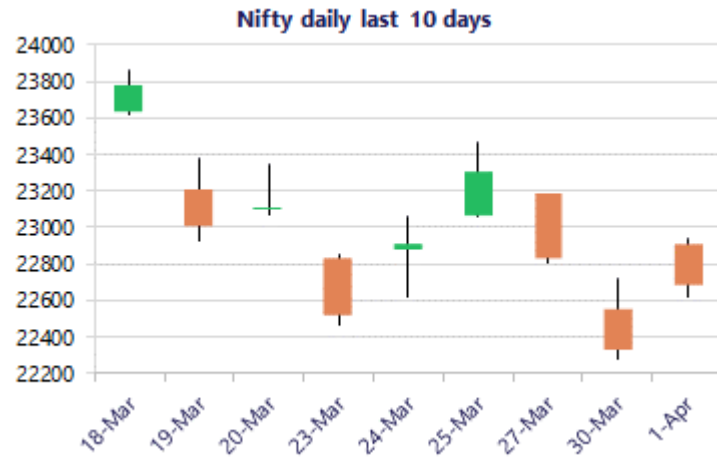


\* Sensex 73134.32 + 1186.77

\* Nifty 22679.40 + 348.00

\* Bank Nifty 51448.65 + 1173.30



\*Blue candle → Close rate > Open rate \* Red candle → Close rate < Open rate

## Market Preview

### Nifty ends in the green; bias cautiously maintained

Nifty opening in the green with a gap up near the 22900 level but witnessed profit booking as the day progressed ahead to close near the 22700 zone with bias still maintained with a cautious approach. BankNifty witnessing a positive start to the session near the 51500 level, witnessed a rangebound movement thereafter, to close in the green but bias still maintained with a nervous approach. The market breadth was positive with the advance decline indicating a ratio of 10:1 at close.

## Market Forecast

### Nifty daily range 22400 - 23000

Nifty, witnessed a gap up opening near the 22900 zone but fizzled out as the day progressed to end near the 22700 level with the sentiment still maintained with a tense approach and the situation surrounded by uncertainties as of now. The index would have the recent low of 22300 as the important support whereas the 21800 zone would be positioned as the crucial and major support, as mentioned earlier, which needs to be sustained failing which the overall trend would begin to turn bearish.

BankNifty opened with a gap up near 51600 zone but thereafter remained rangebound with the market players experiencing a nervous situation over uncertainties of further development of the geo-political tensions in the coming days. The index ended near the 51450 zone with the near-term support maintained near the 50000 zone which needs to be sustained, failing which, there can be fresh downward selling pressure triggered with 47800 zone as the next major support.

The support for the day is seen at 22400 levels, while the resistance is seen at 23000 levels. BankNifty would have the daily range of 50000-52500 levels.

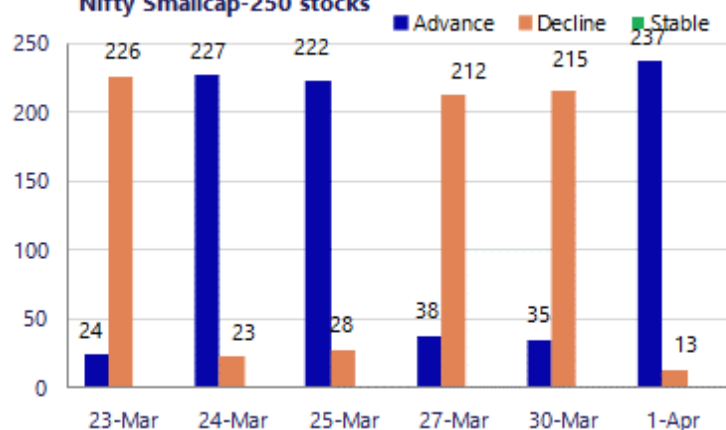
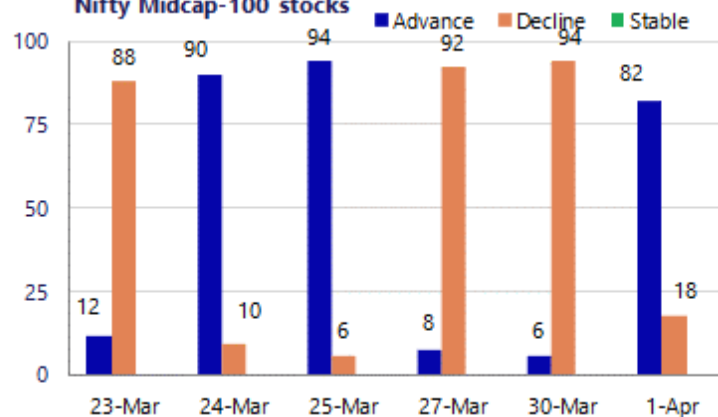
Sensex	Period	Closing	% Chng	Trend	Reversal	2 Sup	1 Sup	Pivot	1 Res	2 Res
	Daily	22679.40	1.56%	1	22282.20	22424	22552	22746	22874	23069
<b>Nifty</b>	Weekly	22819.60	-1.28%	-12	23691.70	21925	22372	22919	23366	23913
	Monthly	22331.40	-11.31%	-3	26623.20	20499	21415	23202	24118	25905
	Daily	51448.65	2.33%	1	50018.70	50644	51046	51536	51938	52428
<b>Bank Nifty</b>	Weekly	52274.60	-2.16%	-5	56636.90	49759	51017	52581	53839	55404
	Monthly	50275.35	-16.94%	-1	64512.75	43464	46870	53524	56929	63583
	Daily	73134.32	1.65%	1	71777.30	72364	72749	73357	73742	74350
<b>Sensex</b>	Weekly	73583.22	-1.27%	-12	76208.60	70706	72145	73997	75436	77288
	Monthly	71947.55	-11.49%	-3	85936.10	66196	69072	74852	77728	83509

**Gainers - Losers ( Nifty 500 Stocks )**
**Gainers**

Company Name	Last Price	% Gain	Volume
Anant Raj	448.2	10.48%	5712417
Bharat Dynamics	1,203.90	9.78%	4217750
BLS Internation	255.41	8.39%	8031127
Action Const	811.50	8.35%	246795
Avenue Supermar	4,271.10	7.94%	2710164
BEML	1,476.80	7.84%	613701
Aditya Birla F	58.05	7.72%	4582641

**Losers**

Company Name	Last Price	% Loss	Volume
Acutaas Chem	2,332.10	-8.85%	1715983
Ashok Leyland	149.11	-3.26%	89326305
3M India	29,395.00	-2.41%	11036
Apollo Hospital	7,305.50	-1.53%	618068
Apar Ind	9,774.50	-1.08%	175162
Alkem Lab	5244.5	-1.03%	119100
AFFLE 3I	1437.4	-0.81%	321340

**Nifty Smallcap-250 stocks**

**Nifty Midcap-100 stocks**


### Nifty Daily chart with RSI indicator



### BankNifty Daily chart with RSI indicator

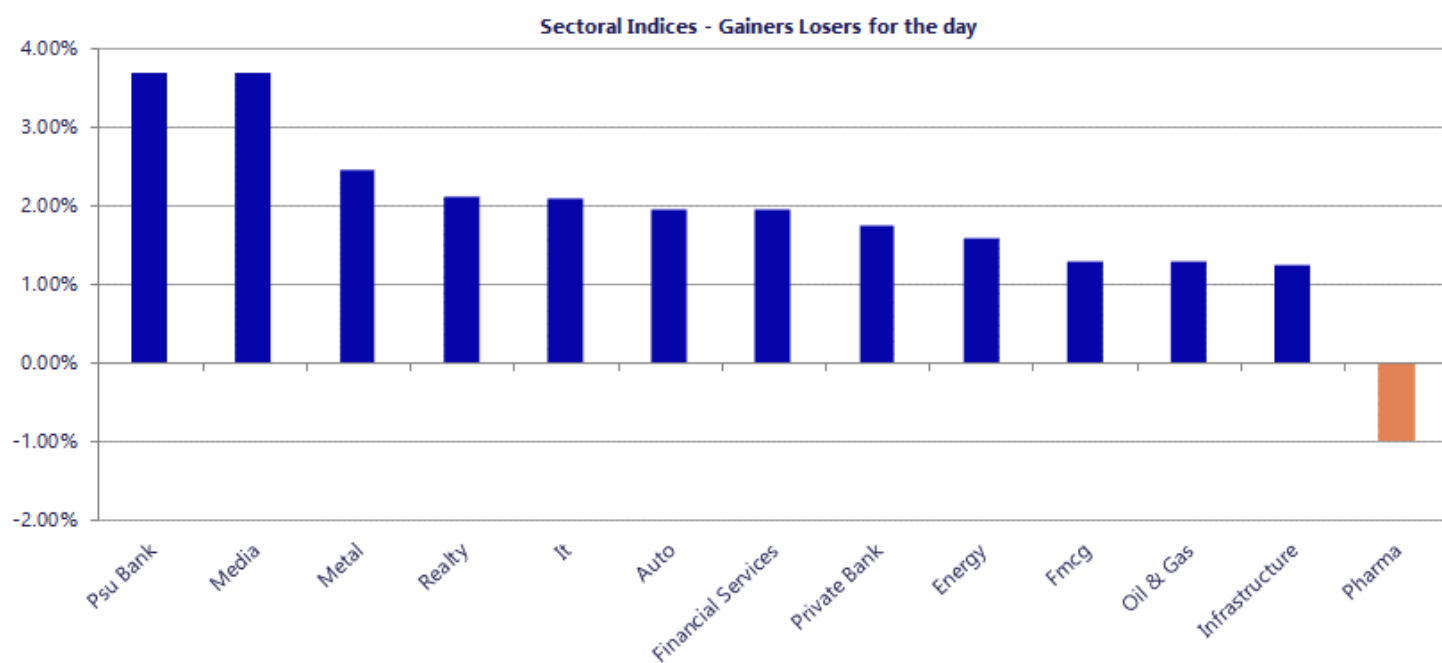


Breakouts - Cross above 200 DMA			
Company Name	LCP	Change %	200 DMA
RPSG VENTURES	946.85	17.14	808.33
Party	86.2	8.16	79.7
Saakshi Medtech	195	8.05	180.48
Quality Power	866.8	7.48	806.44
Rico Auto	108.49	7.32	101.09
Aarvi Encon	127.66	5.17	121.39
Nitin Spinners	363	4.99	345.74
Madhusudan Masa	143.95	4.86	137.28
Akums Drugs & P	496.45	4.41	475.48
Sky Gold	337.75	4.33	323.74
Beacon Trustees	74.55	4.09	71.62
CP	44.03	4.07	42.31
Vdeal System	186.9	3.98	179.74
Avenue Supermar	4271.1	3.94	4109.05
ZFCVINDIA	14375	3.87	13839.83
Ujjivan Small	53.62	3.79	51.66
South Ind Bk	36.36	3.24	35.22
Nipp Nifty PSU	91.26	2.81	88.77

\* Stocks crossing above its Simple Moving Average (200DMA)

Breakdown - Cross below 200 DMA			
Company Name	LCP	Change %	200 DMA
Ashok Leyland	149.11	-3.08	153.85
Uttam Sugar	244.53	-1.29	247.73
IRB Infra	21.61	-1.05	21.84
Craftsman	6838	-0.37	6863.57
Medplus Health	827.95	-0.01	828.03

\* Stocks crossing below its Simple Moving Average (200DMA)



Nifty 50 Stocks - Summary Details											
Symbol	LTP	Chng	% Chng	Volume (lacs)	Turnover (crs.)	52w High	Diff with 52w H	52w Low	Diff with 52w L	365 days % chng	30 days % chng
NIFTY 50	22679.40	348.00	1.56%	5179.39	41191	26373	14.01%	21744	4.30%	-9.93%	-2.10%
ADANIENT	1841.90	83.10	4.72%	23.28	429	2617	29.60%	1753	5.07%	-14.80%	-18.76%
ADANIPTS	1386.50	73.90	5.63%	36.84	509	1584	12.47%	1042	33.13%	-8.84%	18.03%
APOLLOHOSP	7304.50	-114.50	-1.54%	6.18	454	8100	9.82%	6491	12.54%	-6.61%	10.14%
ASIANPAINT	2226.00	60.80	2.81%	12.10	269	2986	25.44%	2115	5.25%	-6.32%	-3.89%
AXISBANK	1200.00	38.70	3.33%	65.96	788	1418	15.39%	1032	16.24%	-13.29%	10.54%
BAJAJ-AUTO	8885.50	104.00	1.18%	4.16	374	10187	12.78%	7089	25.34%	-10.90%	11.17%
BAJAJFINSV	1651.60	19.80	1.21%	17.97	299	2195	24.76%	1627	1.51%	-17.15%	-14.74%
BAJFINANCE	819.00	17.45	2.18%	150.94	1252	1103	25.71%	788	3.95%	-17.76%	-5.84%
BEL	420.00	19.35	4.83%	253.01	1070	473	11.29%	256	63.93%	-5.55%	43.84%
BHARTIARTL	1786.70	4.30	0.24%	106.95	1917	2175	17.83%	1669	7.03%	-4.93%	3.63%
CIPLA	1199.70	-24.50	-2.00%	21.80	264	1673	28.29%	1194	0.48%	-11.01%	-16.93%
COALINDIA	449.45	-1.00	-0.22%	149.59	676	476	5.58%	356	26.25%	4.37%	13.03%
DRREDDY	1207.50	-47.40	-3.78%	22.40	276	1380	12.48%	1020	18.38%	-6.13%	4.80%
EICHERMOT	6820.00	234.00	3.55%	7.37	503	8230	17.13%	5000	36.40%	-14.86%	28.50%
ETERNAL	236.75	7.77	3.39%	345.31	818	368	35.74%	195	21.53%	-3.88%	17.20%
GRASIM	2580.00	22.30	0.87%	6.51	169	2979	13.39%	2466	4.64%	-7.85%	-1.49%
HCLTECH	1356.00	14.40	1.07%	24.69	338	1780	23.82%	1298	4.49%	-2.38%	-11.39%
HDFCBANK	744.00	12.45	1.70%	788.56	5879	1021	27.09%	727	2.39%	-16.19%	-15.83%
HDFCLIFE	572.15	-18.45	-3.12%	98.24	569	821	30.29%	569	0.55%	-20.01%	-17.43%
HINDALCO	904.65	20.20	2.28%	77.77	708	1030	12.15%	546	65.55%	-2.17%	36.29%
HINDUNILVR	2065.00	9.80	0.48%	20.28	421	2750	24.91%	2033	1.56%	-11.68%	-7.56%
ICICIBANK	1213.00	7.10	0.59%	254.72	3106	1500	19.13%	1200	1.05%	-12.03%	-8.00%
INDIGO	4183.00	239.50	6.07%	43.62	1842	6233	32.88%	3895	7.39%	-13.35%	-16.81%
INFY	1279.00	28.40	2.27%	81.37	1046	1728	25.98%	1215	5.26%	-1.62%	-16.21%
ITC	292.20	4.50	1.56%	186.02	544	444	34.22%	287	1.81%	-6.82%	-28.14%
JIOFIN	232.00	7.90	3.53%	216.03	498	339	31.48%	203	14.23%	-9.16%	0.69%
JSWSTEEL	1139.00	16.50	1.47%	20.25	232	1285	11.34%	905	25.83%	-9.94%	7.83%
KOTAKBANK	355.40	2.00	0.57%	212.45	761	460	22.80%	352	1.07%	-14.40%	-17.19%
LT	3621.00	116.90	3.34%	40.99	1488	4440	18.45%	2965	22.11%	-15.36%	5.36%
M&M	3021.00	66.30	2.24%	35.23	1072	3840	21.33%	2425	24.58%	-11.08%	14.52%
MARUTI	12500.00	194.00	1.58%	5.02	629	17370	28.04%	11059	13.03%	-15.86%	8.87%
MAXHEALTH	956.00	-6.30	-0.65%	24.68	238	1314	27.26%	934	2.38%	-12.45%	-11.78%
NESTLEIND	1175.00	0.20	0.02%	18.36	217	1340	12.34%	1074	9.40%	-9.03%	5.19%
NTPC	365.95	-4.70	-1.27%	154.50	568	395	7.24%	316	15.97%	-4.18%	3.92%
ONGC	287.50	2.85	1.00%	316.26	912	293	1.88%	205	40.24%	2.79%	15.89%
POWERGRID	293.30	-2.80	-0.95%	186.36	551	322	8.91%	250	17.32%	-1.79%	1.38%
RELIANCE	1369.50	25.60	1.90%	144.05	1976	1612	15.03%	1115	22.84%	-1.75%	9.33%
SBILIFE	1793.00	15.70	0.88%	11.32	202	2132	15.90%	1431	25.34%	-11.99%	16.03%
SBIN	1018.00	38.60	3.94%	174.24	1767	1235	17.55%	730	39.45%	-15.29%	31.92%
SHRIRAMFIN	899.90	27.80	3.19%	117.52	1067	1108	18.78%	567	58.85%	-16.63%	41.17%
SUNPHARMA	1730.90	-26.30	-1.50%	32.46	568	1851	6.50%	1548	11.82%	-0.35%	1.92%
TATACONSUM	1026.70	11.90	1.17%	13.10	134	1221	15.91%	989	3.79%	-10.02%	3.47%
TATASTEEL	194.85	2.99	1.56%	358.13	704	216	9.98%	125	55.51%	-8.23%	27.25%
TCS	2411.20	52.30	2.22%	41.33	1006	3631	33.58%	2346	2.77%	-8.58%	-32.09%
TECHM	1405.70	21.70	1.57%	16.24	229	1854	24.18%	1209	16.23%	3.53%	0.76%
TITAN	4058.00	106.60	2.70%	7.82	318	4378	7.32%	2925	38.74%	-6.23%	35.86%
TMPV	303.40	7.20	2.43%	89.11	271	744	59.22%	294	3.09%	-20.71%	-54.84%
TRENT	3521.90	226.10	6.86%	16.29	570	6261	43.75%	3276	7.52%	-9.68%	-36.85%
ULTRACEMCO	10725.00	-20.00	-0.19%	4.32	466	13110	18.19%	10325	3.87%	-15.40%	-5.74%
WIPRO	191.10	3.46	1.84%	117.69	227	273	30.03%	187	2.47%	-4.91%	-27.23%

## Disclaimer / Disclosures

### ANALYST CERTIFICATION

I, Mrs. Vaishali Parekh B.com, Research Analyst, author and the name subscribed to this report, hereby certify that all of the views expressed in this research report accurately reflect our views about the subject issuer(s) or securities. We also certify that no part of our compensation was, is, or will be directly or indirectly related to the specific recommendation(s) or view(s) in this report.

Terms & conditions and other disclosures:

Prabhudas Lilladher Pvt. Ltd, Mumbai, India (hereinafter referred to as "PL") is engaged in the business of Stock Broking, Portfolio Manager, Depository Participant and distribution for third party financial products. PL is a subsidiary of Prabhudas Lilladher Advisory Services Pvt Ltd. which has its various subsidiaries engaged in business of commodity broking, investment banking, financial services (margin funding) and distribution of third party financial/other products, details in respect of which are available at [www.plindia.com](http://www.plindia.com)

This document has been prepared by the Research Division of PL and is meant for use by the recipient only as information and is not for circulation. This document is not to be reported or copied or made available to others without prior permission of PL. It should not be considered or taken as an offer to sell or a solicitation to buy or sell any security.

The information contained in this report has been obtained from sources that are considered to be reliable. However, PL has not independently verified the accuracy or completeness of the same. Neither PL nor any of its affiliates, its directors or its employees accepts any responsibility of whatsoever nature for the information, statements and opinion given, made available or expressed herein or for any omission therein.

Recipients of this report should be aware that past performance is not necessarily a guide to future performance and value of investments can go down as well. The suitability or otherwise of any investments will depend upon the recipient's particular circumstances and, in case of doubt, advice should be sought from an independent expert/advisor.

Either PL or its affiliates or its directors or its employees or its representatives or its clients or their relatives may have position(s), make market, act as principal or engage in transactions of securities of companies referred to in this report and they may have used the research material prior to publication.

PL may from time to time solicit or perform investment banking or other services for any company mentioned in this document.

PL is registered as Research Analyst under Securities and Exchange Board of India (Research Analysts) Regulations, 2014 PL submits that no material disciplinary action has been taken on us by any Regulatory Authority impacting Equity Research Analysis activities.

PL or its research analysts or its associates or his relatives do not have any financial interest in the subject company.

PL or its research analysts or its associates or his relatives do not have actual/beneficial ownership of one per cent or more securities of the subject company at the end of the month immediately preceding the date of publication of the research report.

PL or its research analysts or its associates or his relatives do not have any material conflict of interest at the time of publication of the research report.

PL or its associates might have received compensation from the subject company in the past twelve months.

PL or its associates might have managed or co-managed public offering of securities for the subject company in the past twelve months or mandated by the subject company for any other assignment in the past twelve months.

PL or its associates might have received any compensation for investment banking or merchant banking or brokerage services from the subject company in the past twelve months.

PL or its associates might have received any compensation for products or services other than investment banking or merchant banking or brokerage services from the subject company in the past twelve months PL or its associates might have received any compensation or other benefits from the subject company or third party in connection with the research report.

PL encourages independence in research report preparation and strives to minimize conflict in preparation of research report. PL or its analysts did not receive any compensation or other benefits from the subject Company or third party in connection with the preparation of the research report. PL or its Research Analysts do not have any material conflict of interest at the time of publication of this report.

It is confirmed that Mrs. Vaishali Parekh B.com, Research Analyst of this report has not received any compensation from the companies mentioned in the report in the preceding twelve months compensation of our Research Analysts is not based on any specific merchant banking, investment banking or brokerage service transactions.

The Research analysts for this report certifies that all of the views expressed in this report accurately reflect his or her personal views about the subject company or companies and its or their securities, and no part of his or her compensation was, is or will be, directly or indirectly related to specific recommendations or views expressed in this report.

The research analysts for this report has not served as an officer, director or employee of the subject company PL or its research analysts have not engaged in market making activity for the subject company

Our sales people, traders, and other professionals or affiliates may provide oral or written market commentary or trading strategies to our clients that reflect opinions that are contrary to the opinions expressed herein, and our proprietary trading and investing businesses may make investment decisions that are inconsistent with the recommendations expressed herein. In reviewing these materials, you should be aware that any or all of the foregoing, among other things, may give rise to real or potential conflicts of interest.

PL and its associates, their directors and employees may (a) from time to time, have a long or short position in, and buy or sell the securities of the subject company or (b) be engaged in any other transaction involving such securities and earn brokerage or other compensation or act as a market maker in the financial instruments of the subject company or act as an advisor or lender/borrower to the subject company or may have any other potential conflict of interests with respect to any recommendation and other related information and opinions.

**Regd. Office:** 3<sup>rd</sup> Floor, Sadhana House, 570, P. B. Marg, Behind Mahindra Tower, Worli, Mumbai - 400 018, India.