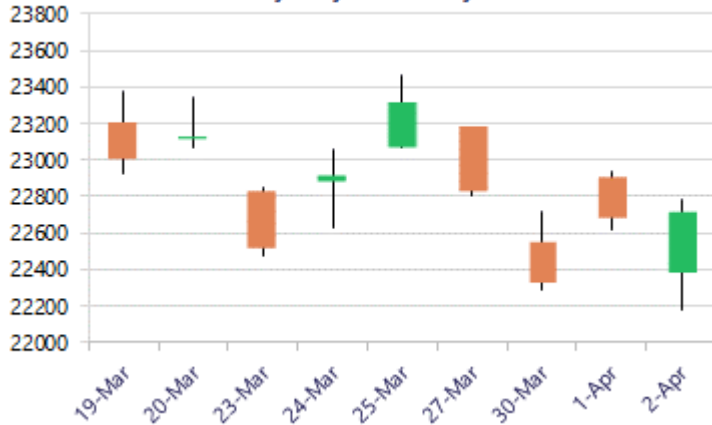


* Sensex 73319.55 + 185.23

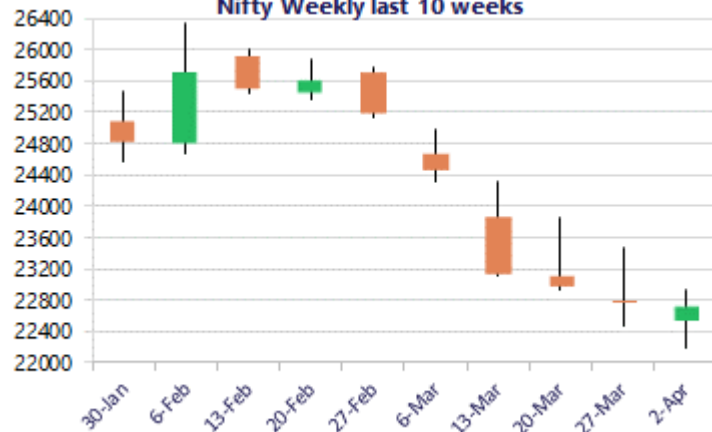
* Nifty 22713.10 + 33.70

* Bank Nifty 51548.75 + 100.10

Nifty daily last 10 days



Nifty Weekly last 10 weeks



*Blue candle → Close rate > Open rate * Red candle → Close rate < Open rate

Market Preview

Nifty witnesses strong recovery after weak start

Nifty after opening on a weak note staged a strong recovery to erase the morning losses but has the overall bias and sentiment precariously placed. BankNifty recovered from the low made near 49950 zone to end in the green above the 51500 zone but need further strong upward movement to overall improve the bias. The market breadth was positive with the advance decline indicating a ratio of 2:1 at close.

Market Forecast

Nifty daily range 22400 - 23000

Nifty, opened on a weak note almost 500 points hitting a fresh new low at 22182 zone but witnessed a strong recovery as the day progressed to end in the green near 22700 level with overall bias maintained with a very cautious approach. Technically, with the sentiment still in a tense mode, the index would need to sustain the important and crucial support near the 21800 zone, as mentioned earlier, failing which the overall trend would begin to turn bearish.

BankNifty tanked in the opening session to make a new low at 49950 zone, but a strong bounce back erased the loss and closed in the green near 54550 level with bias and sentiment precariously placed. The index would need to move past the 54000 zone to improve the bias and thereafter, anticipate for further upward movement in the coming days. As mentioned earlier, the index needs to sustain the near-term support at 50000 zone, failing which, there can be fresh downward selling pressure triggered with 47800 zone as the next major support.

The support for the day is seen at 22400 levels, while the resistance is seen at 23000 levels. BankNifty would have the daily range of 50200-52700 levels.

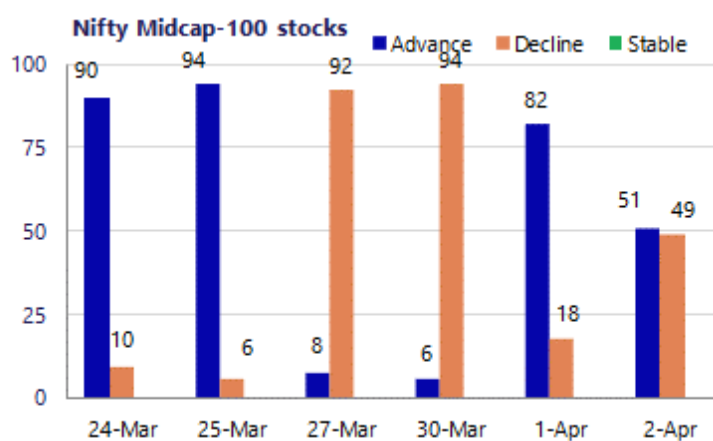
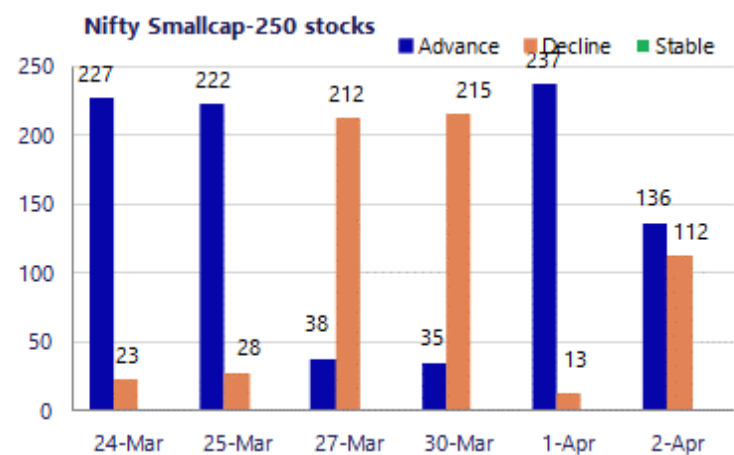
Sensex	Period	Closing	% Chng	Trend	Reversal	2 Sup	1 Sup	Pivot	1 Res	2 Res
Nifty	Daily	22713.10	0.15%	2	22388.70	21960	22336	22559	22936	23159
	Weekly	22713.10	-0.47%	-13	23313.05	21962	22338	22560	22935	23157
	Monthly	22331.40	-11.31%	-3	26623.20	20499	21415	23202	24118	25905
Bank Nifty	Daily	51548.75	0.19%	2	50396.80	49301	50425	51079	52202	52856
	Weekly	51548.75	-1.39%	-6	54758.90	49307	50428	51079	52200	52851
	Monthly	50275.35	-16.94%	-1	64512.75	43464	46870	53524	56929	63583
Sensex	Daily	73319.55	0.25%	2	72123.65	70789	72054	72811	74077	74834
	Weekly	73319.55	-0.36%	-13	75070.15	70829	72074	73019	74265	75210
	Monthly	71947.55	-11.49%	-3	85936.10	66196	69072	74852	77728	83509

Gainers - Losers (Nifty 500 Stocks)
Gainers

Company Name	Last Price	% Gain	Volume
Birlasoft	370.85	6.06%	2545990
Bata India	657.15	4.63%	377843
Akzo Nobel	2991.8	4.19%	105032
Anand Rathi	3,208.20	3.01%	274345
ACME Solar	274.65	2.94%	3269195
Bharti Hexacom	1,506.80	2.81%	225803
Avenue Supermar	4,362.40	2.14%	1579305

Losers

Company Name	Last Price	% Loss	Volume
Acutaas Chem	2,110.20	-9.52%	1285461
Amber Enterpris	6281.5	-4.53%	430487
Aster DM Health	658.10	-4.33%	469120
Authum Invest	419.70	-2.96%	904082
Aadhar Housing	439.10	-2.67%	158713
Asian Paints	2169	-2.55%	1853997
Aegis Logistics	589.25	-2.35%	537972



Nifty Daily chart with RSI indicator



BankNifty Daily chart with RSI indicator

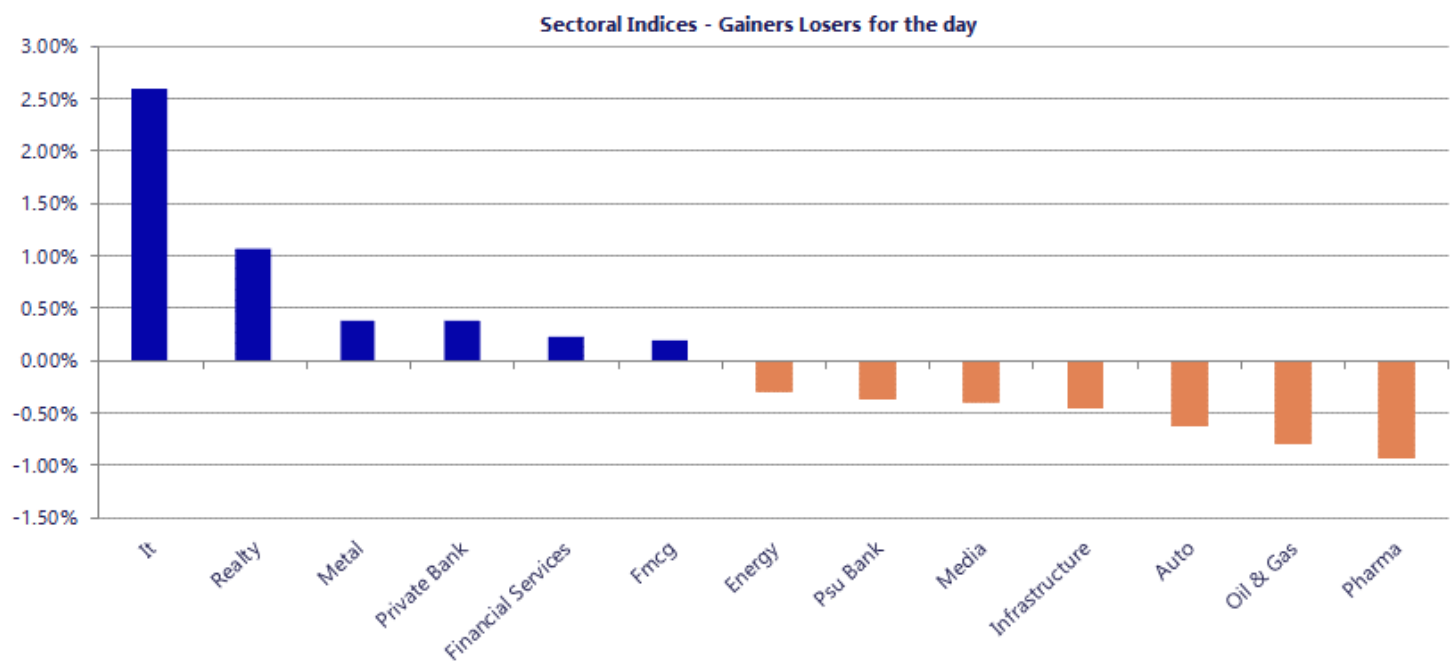


Breakouts - Cross above 200 DMA			
Company Name	LCP	Change %	200 DMA
Atal	24.4	7.54	22.69
Krishana Phosch	539.2	4.85	514.25
Tarmat	55.47	3.18	53.76
Rishabh Instru.	387.7	2.81	377.11
HVAX Technologi	813.05	2.74	791.36
Soma Textile	99.9	2.72	97.25
Sadhav Shipping	110	2.56	107.25
FSN E-Com (Nyka	245.98	1.80	241.63
Accretion Pharm	70	1.64	68.87
Ganesha Ecosph	1110.15	1.16	1097.46
Mindspace REIT	457.33	1.03	452.68
Bannariamman	3691.7	1.01	3654.62
Pearl Global In	1486.1	0.65	1476.53
SIGMA ADVANCED	157.64	0.39	157.03
AAA	92.21	0.23	92
Mayur Uniquoter	528.9	0.18	527.97
Uttam Sugar	247.66	0.12	247.37
Vishnu Chemical	507.15	0.11	506.61

* Stocks crossing above its Simple Moving Average (200DMA)

Breakdown - Cross below 200 DMA			
Company Name	LCP	Change %	200 DMA
Service Care	52.25	-3.33	54.05
Aatmaj Health	19.35	-3.01	19.95
NR Agarwal	408.8	-2.91	421.07
Nippon	829.9	-2.86	854.3
KEI Industries	4048.1	-2.02	4131.57
Muthoot Finance	3178.8	-1.71	3234.1
Eicher Motors	6649.5	-1.14	6726.51
Delhivery	426.25	-0.85	429.91
Atul	6296	-0.84	6349.41
Globe Internati	38.89	-0.82	39.21
TVS Motor	3391.4	-0.72	3416.16
Akiko Global	200	-0.69	201.38
Waaree Energies	3070.7	-0.59	3088.82
Mirae Nifty8-13	29.29	-0.51	29.44
EPL	213.73	-0.50	214.81
Shipping Corp	228.55	-0.27	229.16
Sun Pharma	1693.6	-0.16	1696.26

* Stocks crossing below its Simple Moving Average (200DMA)



Nifty 50 Stocks - Summary Details											
Symbol	LTP	Chng	% Chng	Volume (lacs)	Turnover (crs.)	52w High	Diff with 52w H	52w Low	Diff with 52w L	365 days % chng	30 days % chng
NIFTY 50	22713.10	33.70	0.15%	4950.37	38664	26373	13.88%	21744	4.46%	-8.66%	-2.65%
ADANIENT	1833.00	-9.50	-0.52%	18.30	329	2617	29.94%	1753	4.56%	-13.72%	-20.32%
ADANIPTS	1380.00	-5.40	-0.39%	32.10	436	1584	12.88%	1042	32.50%	-6.14%	15.44%
APOLLOHOSP	7299.00	-6.50	-0.09%	3.38	246	8100	9.88%	6491	12.45%	-6.32%	8.42%
ASIANPAINT	2170.40	-55.40	-2.49%	18.54	401	2986	27.31%	2115	2.62%	-5.93%	-5.91%
AXISBANK	1198.10	5.00	0.42%	95.01	1116	1418	15.53%	1032	16.06%	-12.69%	10.48%
BAJAJ-AUTO	8740.00	-155.50	-1.75%	2.55	223	10187	14.20%	7089	23.28%	-10.60%	8.26%
BAJAJFINSV	1640.00	-7.00	-0.43%	22.84	371	2195	25.28%	1597	2.69%	-15.55%	-15.07%
BAJFINANCE	828.90	11.60	1.42%	91.13	740	1103	24.82%	788	5.20%	-15.27%	-4.39%
BEL	421.60	2.90	0.69%	196.79	820	473	10.95%	256	64.56%	-7.13%	49.29%
BHARTIARTL	1792.00	10.10	0.57%	108.57	1919	2175	17.59%	1669	7.34%	-4.33%	2.13%
CIPLA	1195.00	-0.90	-0.08%	31.28	371	1673	28.57%	1166	2.51%	-11.59%	-17.72%
COALINDIA	449.30	-0.10	-0.02%	66.99	299	476	5.61%	356	26.21%	5.41%	13.03%
DRREDDY	1214.00	4.40	0.36%	35.61	430	1380	12.01%	1020	19.02%	-6.21%	5.57%
EICHERMOT	6660.00	-165.50	-2.42%	6.60	439	8230	19.08%	5000	33.20%	-14.90%	24.36%
ETERNAL	231.99	-4.53	-1.92%	665.53	1513	368	37.04%	195	19.09%	-4.48%	9.41%
GRASIM	2552.90	-39.90	-1.54%	5.22	133	2979	14.30%	2466	3.54%	-8.08%	-2.43%
HCLTECH	1395.00	40.60	3.00%	65.09	901	1780	21.63%	1298	7.50%	1.75%	-8.68%
HDFCBANK	751.00	8.75	1.18%	493.06	3651	1021	26.41%	727	3.35%	-14.60%	-16.41%
HDFCLIFE	565.00	-7.95	-1.39%	58.36	328	821	31.16%	555	1.78%	-20.12%	-18.84%
HINDALCO	919.95	15.35	1.70%	76.98	696	1030	10.67%	546	68.35%	-2.13%	39.13%
HINDUNILVR	2065.00	0.30	0.01%	14.32	293	2750	24.91%	2023	2.10%	-11.01%	-7.73%
ICICIBANK	1216.50	3.80	0.31%	208.49	2512	1500	18.90%	1188	2.43%	-11.46%	-8.62%
INDIGO	4170.00	-10.80	-0.26%	22.22	907	6233	33.09%	3895	7.05%	-7.75%	-17.72%
INFY	1297.50	21.80	1.71%	128.70	1654	1728	24.91%	1215	6.78%	0.67%	-16.30%
ITC	292.30	0.60	0.21%	180.80	526	444	34.20%	287	1.85%	-7.18%	-28.54%
JIOFIN	229.95	-1.98	-0.85%	185.39	420	339	32.09%	203	13.22%	-7.65%	0.07%
JSWSTEEL	1135.20	-5.20	-0.46%	22.08	249	1285	11.64%	905	25.41%	-10.42%	7.51%
KOTAKBANK	357.80	1.75	0.49%	220.56	777	460	22.28%	346	3.56%	-13.39%	-16.97%
LT	3610.00	2.50	0.07%	41.21	1463	4440	18.69%	2965	21.74%	-11.23%	5.56%
M&M	3007.00	-24.50	-0.81%	32.98	982	3840	21.69%	2425	24.00%	-9.82%	14.01%
MARUTI	12590.00	81.00	0.65%	4.38	546	17370	27.52%	11059	13.84%	-12.50%	7.46%
MAXHEALTH	946.50	-12.40	-1.29%	18.90	178	1314	27.98%	929	1.88%	-12.65%	-13.54%
NESTLEIND	1190.00	9.20	0.78%	13.58	161	1340	11.22%	1074	10.80%	-7.01%	7.66%
NTPC	358.90	-5.75	-1.58%	165.49	589	395	9.02%	316	13.74%	-4.94%	2.03%
ONGC	286.10	-1.95	-0.68%	209.34	599	293	2.35%	205	39.56%	1.38%	14.15%
POWERGRID	290.95	-1.85	-0.63%	172.22	495	322	9.64%	250	16.38%	-1.97%	1.46%
RELIANCE	1350.90	-18.30	-1.34%	212.77	2865	1612	16.19%	1115	21.17%	-0.52%	7.97%
SBILIFE	1768.90	-21.60	-1.21%	14.95	262	2132	17.03%	1431	23.65%	-12.96%	13.40%
SBIN	1018.00	0.20	0.02%	207.74	2079	1235	17.55%	730	39.45%	-14.45%	31.19%
SHRIRAMFIN	891.80	-8.75	-0.97%	72.30	635	1108	19.51%	567	57.42%	-15.27%	39.47%
SUNPHARMA	1692.00	-36.50	-2.11%	39.38	660	1851	8.60%	1548	9.30%	-3.45%	-1.26%
TATACONSUM	1044.90	21.10	2.06%	25.86	267	1221	14.42%	989	5.63%	-7.14%	-1.67%
TATASTEEL	193.50	-1.10	-0.57%	276.28	528	216	10.60%	125	54.43%	-8.30%	25.09%
TCS	2445.70	37.50	1.56%	53.77	1306	3631	32.63%	2346	4.24%	-6.42%	-30.99%
TECHM	1439.00	34.50	2.46%	25.01	357	1854	22.38%	1209	18.98%	6.96%	1.12%
TITAN	4078.00	12.50	0.31%	16.15	654	4378	6.86%	2925	39.42%	-4.50%	31.61%
TMPV	303.50	0.55	0.18%	90.96	272	744	59.21%	294	3.13%	-18.11%	-54.83%
TRENT	3532.90	6.40	0.18%	11.31	395	6261	43.57%	3276	7.86%	-8.20%	-37.83%
ULTRACEMCO	10600.00	-114.00	-1.06%	3.33	351	13110	19.15%	10325	2.66%	-15.34%	-5.79%
WIPRO	194.80	3.62	1.89%	165.98	320	273	28.67%	187	4.45%	-1.90%	-26.10%

Disclaimer / Disclosures

ANALYST CERTIFICATION

I, Mrs. Vaishali Parekh B.com, Research Analyst, author and the name subscribed to this report, hereby certify that all of the views expressed in this research report accurately reflect our views about the subject issuer(s) or securities. We also certify that no part of our compensation was, is, or will be directly or indirectly related to the specific recommendation(s) or view(s) in this report.

Terms & conditions and other disclosures:

Prabhudas Lilladher Pvt. Ltd, Mumbai, India (hereinafter referred to as "PL") is engaged in the business of Stock Broking, Portfolio Manager, Depository Participant and distribution for third party financial products. PL is a subsidiary of Prabhudas Lilladher Advisory Services Pvt Ltd. which has its various subsidiaries engaged in business of commodity broking, investment banking, financial services (margin funding) and distribution of third party financial/other products, details in respect of which are available at www.plindia.com

This document has been prepared by the Research Division of PL and is meant for use by the recipient only as information and is not for circulation. This document is not to be reported or copied or made available to others without prior permission of PL. It should not be considered or taken as an offer to sell or a solicitation to buy or sell any security.

The information contained in this report has been obtained from sources that are considered to be reliable. However, PL has not independently verified the accuracy or completeness of the same. Neither PL nor any of its affiliates, its directors or its employees accepts any responsibility of whatsoever nature for the information, statements and opinion given, made available or expressed herein or for any omission therein.

Recipients of this report should be aware that past performance is not necessarily a guide to future performance and value of investments can go down as well. The suitability or otherwise of any investments will depend upon the recipient's particular circumstances and, in case of doubt, advice should be sought from an independent expert/advisor.

Either PL or its affiliates or its directors or its employees or its representatives or its clients or their relatives may have position(s), make market, act as principal or engage in transactions of securities of companies referred to in this report and they may have used the research material prior to publication.

PL may from time to time solicit or perform investment banking or other services for any company mentioned in this document.

PL is registered as Research Analyst under Securities and Exchange Board of India (Research Analysts) Regulations, 2014 PL submits that no material disciplinary action has been taken on us by any Regulatory Authority impacting Equity Research Analysis activities.

PL or its research analysts or its associates or his relatives do not have any financial interest in the subject company.

PL or its research analysts or its associates or his relatives do not have actual/beneficial ownership of one per cent or more securities of the subject company at the end of the month immediately preceding the date of publication of the research report.

PL or its research analysts or its associates or his relatives do not have any material conflict of interest at the time of publication of the research report.

PL or its associates might have received compensation from the subject company in the past twelve months.

PL or its associates might have managed or co-managed public offering of securities for the subject company in the past twelve months or mandated by the subject company for any other assignment in the past twelve months.

PL or its associates might have received any compensation for investment banking or merchant banking or brokerage services from the subject company in the past twelve months.

PL or its associates might have received any compensation for products or services other than investment banking or merchant banking or brokerage services from the subject company in the past twelve months PL or its associates might have received any compensation or other benefits from the subject company or third party in connection with the research report.

PL encourages independence in research report preparation and strives to minimize conflict in preparation of research report. PL or its analysts did not receive any compensation or other benefits from the subject Company or third party in connection with the preparation of the research report. PL or its Research Analysts do not have any material conflict of interest at the time of publication of this report.

It is confirmed that Mrs. Vaishali Parekh B.com, Research Analyst of this report has not received any compensation from the companies mentioned in the report in the preceding twelve months compensation of our Research Analysts is not based on any specific merchant banking, investment banking or brokerage service transactions.

The Research analysts for this report certifies that all of the views expressed in this report accurately reflect his or her personal views about the subject company or companies and its or their securities, and no part of his or her compensation was, is or will be, directly or indirectly related to specific recommendations or views expressed in this report.

The research analysts for this report has not served as an officer, director or employee of the subject company PL or its research analysts have not engaged in market making activity for the subject company

Our sales people, traders, and other professionals or affiliates may provide oral or written market commentary or trading strategies to our clients that reflect opinions that are contrary to the opinions expressed herein, and our proprietary trading and investing businesses may make investment decisions that are inconsistent with the recommendations expressed herein. In reviewing these materials, you should be aware that any or all of the foregoing, among other things, may give rise to real or potential conflicts of interest.

PL and its associates, their directors and employees may (a) from time to time, have a long or short position in, and buy or sell the securities of the subject company or (b) be engaged in any other transaction involving such securities and earn brokerage or other compensation or act as a market maker in the financial instruments of the subject company or act as an advisor or lender/borrower to the subject company or may have any other potential conflict of interests with respect to any recommendation and other related information and opinions.

Regd. Office: 3rd Floor, Sadhana House, 570, P. B. Marg, Behind Mahindra Tower, Worli, Mumbai - 400 018, India.