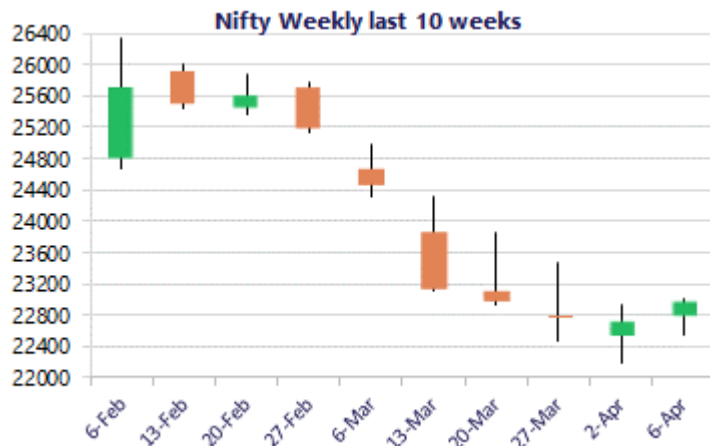
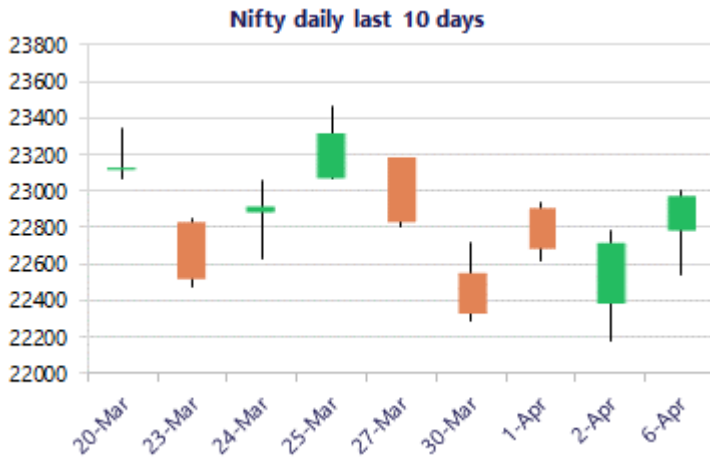


* Sensex 74106.85 + 787.30

* Nifty 22968.25 + 255.15

* Bank Nifty 52609.10 + 1060.35



*Blue candle → Close rate > Open rate * Red candle → Close rate < Open rate

Market Preview

Nifty extends gains; ends near 23000 zone

Nifty witnessed an overall positive move during the session with the broader markets also participating to take the index to close near the 23000 zone. BankNifty indicated a strong move with HDFC Bank gaining by more than 2% to improve the sentiment to some extent and ended the session near 52600 level. The market breadth was strong with the advance decline indicating a ratio of 3:1 at close.

Market Forecast

Nifty daily range 22700 - 23200

Nifty, extended the gains further to end in the green near the 23000 zone with sentiment slightly easing out but not completely convincing as of now with the broader markets also witnessing active participation anticipating for further follow through of the positive move in the coming days. As mentioned earlier, the index would need to close above the 23500 zone to establish some conviction and clarity. On the downside, the important and crucial support would be near the 21800 zone, which needs to be sustained, failing which the overall trend would begin to turn bearish.

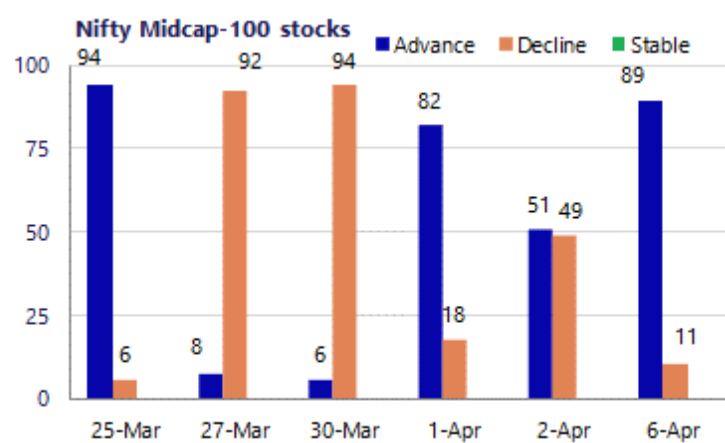
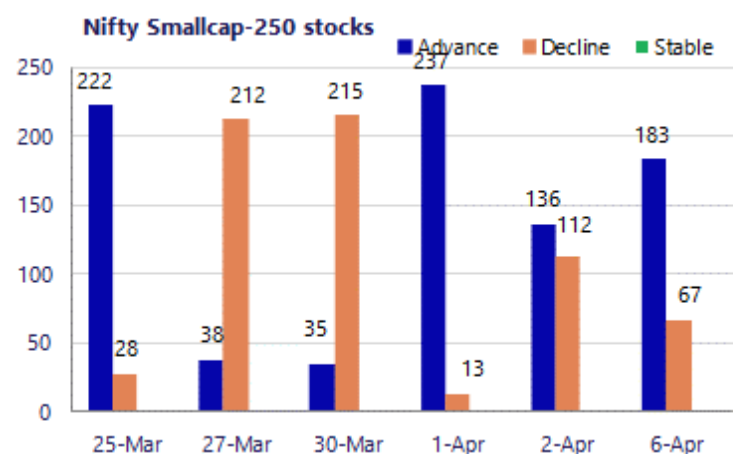
BankNifty witnessed a strong move after a long time gaining more than 1000 points to close above the 52600 level on the back of decent recovery by HDFC Bank which gained by more than 2% to help the index gain significantly also well supported by other frontline banking stocks. As said earlier, the index would need to move past the 54000 zone to improve the bias and thereafter, anticipate for further upward movement in the coming days. At the same time, it would need to sustain the support at 50000 zone, failing which, there can be fresh downward selling pressure triggered with 47800 zone as the next major support.

The support for the day is seen at 22700 levels, while the resistance is seen at 23200 levels. BankNifty would have the daily range of 51800-53500 levels.

Sensex	Period	Closing	% Chng	Trend	Reversal	2 Sup	1 Sup	Pivot	1 Res	2 Res
	Daily	22968.25	1.12%	3	22482.60	22381	22675	22837	23130	23292
Nifty	Weekly	22713.10	-0.47%	-13	23313.05	21962	22338	22560	22935	23157
	Monthly	22331.40	-11.31%	-3	26623.20	20499	21415	23202	24118	25905
	Daily	52609.10	2.06%	3	50511.90	50548	51579	52142	53172	53735
Bank Nifty	Weekly	51548.75	-1.39%	-6	54758.90	49307	50428	51079	52200	52851
	Monthly	50275.35	-16.94%	-1	64512.75	43464	46870	53524	56929	63583
	Daily	74106.85	1.07%	3	72482.50	72202	73155	73681	74633	75160
Sensex	Weekly	73319.55	-0.36%	-13	75070.15	70829	72074	73019	74265	75210
	Monthly	71947.55	-11.49%	-3	85936.10	66196	69072	74852	77728	83509

Gainers - Losers (Nifty 500 Stocks)

Gainers				Losers			
Company Name	Last Price	% Gain	Volume	Company Name	Last Price	% Loss	Volume
Adani Green Ene	921.1	7.61%	13111794	Atul	6,149.00	-2.33%	17864
Adani Energy	991.35	5.28%	2083182	Astral Ltd	1522.8	-1.98%	1078184
Acutaas Chem	2212.4	4.84%	1184709	Ajanta Pharma	2,742.30	-1.75%	87096
AB Capital	311.30	4.38%	4033907	Anupam Rasayan	1,243.60	-1.72%	125662
Avenue Supermar	4,551.30	4.33%	1915208	Abbott India	25,895.00	-1.48%	8263
Axis Bank	1,245.30	3.96%	7846939	Amara Raja	719.35	-1.19%	713265
Adani Enterpris	1,902.20	3.71%	3153236	3M India	29385	-1.18%	6077



Nifty Daily chart with RSI indicator



BankNifty Daily chart with RSI indicator

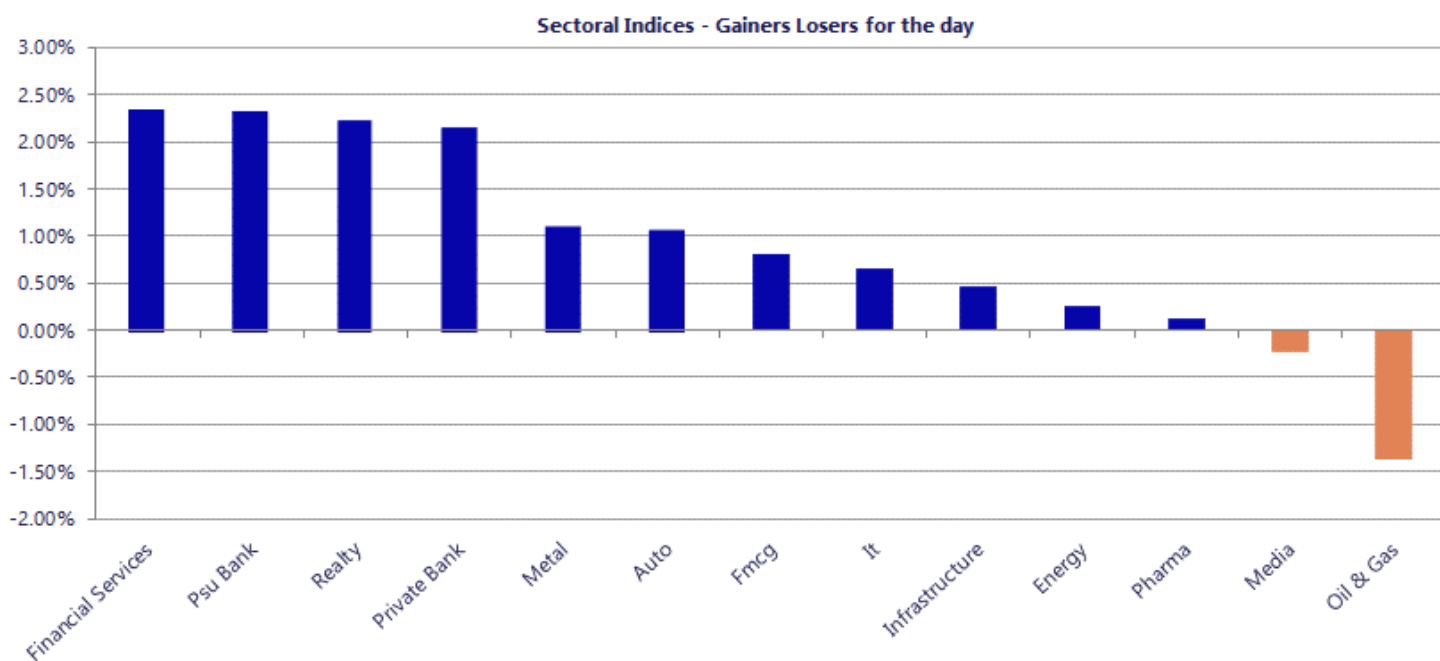


Breakouts - Cross above 200 DMA			
Company Name	LCP	Change %	200 DMA
Gulshan Poly	161.3	4.97	153.66
Osel Devices	541	3.63	522.07
City Union Bank	249.91	3.02	242.59
Indo Borax	253.68	2.76	246.87
Axis Bank	1245.3	2.66	1213.09
Prime Sec	287.25	2.48	280.31
Gujarat Apollo	441.35	2.48	430.65
Torrent Power	1379.1	2.36	1347.27
Yash Optics & L	115.8	2.11	113.41
TVS Motor	3487.8	2.00	3419.42
Bodal Chemicals	60.67	1.83	59.58
Freshara Agro	181.3	1.65	178.35
Muthoot Finance	3289.8	1.62	3237.22
Sangam India	441.95	1.62	434.89
Globe Internati	39.87	1.55	39.26
Shipping Corp	232.76	1.52	229.27
Sat Kartar Shop	170	1.48	167.52
Welspun Corp	862.6	1.43	850.46

* Stocks crossing above its Simple Moving Average (200DMA)

Breakdown - Cross below 200 DMA			
Company Name	LCP	Change %	200 DMA
Spectrum Electr	1367.3	-0.91	1379.92
ZFCVINDIA	13744	-0.75	13847.66
SIGMA ADVANCED	156.52	-0.51	157.32
Bannariamman	3638.6	-0.41	3653.52
Pix Transmis	1444.6	-0.33	1449.33
Team India	250.28	-0.26	250.93

* Stocks crossing below its Simple Moving Average (200DMA)



Nifty 50 Stocks - Summary Details											
Symbol	LTP	Chng	% Chng	Volume (lacs)	Turnover (crs.)	52w High	Diff with 52w H	52w Low	Diff with 52w L	365 days % chng	30 days % chng
NIFTY 50	22968.25	255.15	1.12%	4263.82	35891	26373	12.91%	22183	3.54%	-6.06%	0.28%
ADANIENT	1899.50	65.30	3.56%	31.53	586	2617	27.40%	1753	8.36%	-6.88%	-16.20%
ADANIPTS	1390.60	13.00	0.94%	25.19	345	1584	12.21%	1042	33.52%	-5.88%	21.10%
APOLLOHOSP	7380.00	62.50	0.85%	3.60	263	8100	8.88%	6491	13.70%	-4.46%	9.91%
ASIANPAINT	2190.00	21.00	0.97%	20.48	445	2986	26.65%	2115	3.55%	-3.93%	-7.05%
AXISBANK	1237.60	39.70	3.31%	78.47	960	1418	12.74%	1032	19.88%	-5.94%	13.41%
BAJAJ-AUTO	8952.00	193.50	2.21%	3.14	279	10187	12.12%	7089	26.27%	-8.80%	16.49%
BAJAJFINSV	1672.10	31.40	1.91%	12.15	201	2195	23.82%	1597	4.70%	-10.53%	-12.56%
BAJFINANCE	850.00	23.15	2.80%	125.04	1043	1103	22.90%	788	7.88%	-10.55%	-2.51%
BEL	426.50	4.90	1.16%	123.27	524	473	9.92%	256	66.47%	-8.96%	52.32%
BHARTIARTL	1790.90	1.20	0.07%	81.83	1460	2175	17.64%	1669	7.28%	-4.27%	2.72%
CIPLA	1203.90	11.50	0.96%	21.89	260	1673	28.04%	1166	3.28%	-8.88%	-14.93%
COALINDIA	458.55	9.20	2.05%	124.03	568	476	3.67%	356	28.81%	4.11%	19.09%
DRREDDY	1217.00	-0.30	-0.02%	10.99	133	1380	11.79%	1020	19.31%	-6.66%	9.64%
EICHERMOT	6592.00	-57.50	-0.86%	9.71	642	8230	19.90%	5000	31.84%	-13.50%	25.61%
ETERNAL	232.09	0.37	0.16%	315.87	734	368	37.01%	195	19.14%	-0.21%	10.24%
GRASIM	2612.00	47.90	1.87%	7.20	185	2979	12.32%	2466	5.94%	-3.91%	-0.19%
HCLTECH	1400.00	-2.20	-0.16%	21.35	300	1780	21.35%	1298	7.88%	3.19%	-1.55%
HDFCBANK	770.90	20.00	2.66%	429.76	3263	1021	24.46%	727	6.09%	-10.05%	-15.16%
HDFCLIFE	581.65	15.55	2.75%	43.34	247	821	29.13%	555	4.78%	-13.00%	-15.59%
HINDALCO	926.75	10.50	1.15%	55.55	516	1030	10.01%	546	69.59%	-3.35%	54.47%
HINDUNILVR	2083.60	18.30	0.89%	16.61	344	2750	24.23%	2023	3.02%	-6.38%	-7.17%
ICICIBANK	1228.60	12.80	1.05%	100.58	1225	1500	18.09%	1188	3.45%	-6.46%	-7.99%
INDIGO	4300.00	106.50	2.54%	18.02	758	6233	31.01%	3895	10.39%	-2.36%	-15.67%
INFY	1307.00	6.20	0.48%	102.08	1336	1728	24.36%	1215	7.56%	-0.11%	-9.96%
ITC	294.80	1.95	0.67%	180.45	528	444	33.63%	287	2.72%	-4.81%	-28.04%
JIOFIN	235.70	6.22	2.71%	160.36	370	339	30.39%	203	16.05%	-1.52%	6.02%
JSWSTEEL	1132.50	-8.80	-0.77%	32.14	362	1285	11.85%	905	25.11%	-8.20%	12.60%
KOTAKBANK	360.95	2.95	0.82%	183.20	652	460	21.60%	346	4.47%	-9.72%	-15.35%
LT	3727.00	113.90	3.15%	33.53	1230	4440	16.06%	2965	25.69%	-5.64%	14.32%
M&M	3019.00	7.30	0.24%	25.55	766	3840	21.38%	2425	24.49%	-9.41%	16.27%
MARUTI	12707.00	76.00	0.60%	3.83	481	17370	26.85%	11059	14.90%	-10.25%	10.67%
MAXHEALTH	933.00	-11.60	-1.23%	46.05	429	1314	29.01%	923	1.08%	-10.46%	-17.99%
NESTLEIND	1214.30	23.00	1.93%	14.61	175	1340	9.41%	1074	13.06%	-3.04%	7.36%
NTPC	366.65	7.00	1.95%	115.34	417	395	7.06%	316	16.19%	-3.67%	4.64%
ONGC	281.35	-5.85	-2.04%	244.48	691	293	3.98%	205	37.24%	0.86%	24.49%
POWERGRID	295.00	5.05	1.74%	92.92	271	322	8.39%	250	18.00%	-1.39%	0.37%
RELIANCE	1306.00	-44.50	-3.30%	292.73	3824	1612	18.97%	1115	17.15%	-7.03%	8.41%
SBILIFE	1840.40	66.40	3.74%	17.21	312	2132	13.68%	1431	28.65%	-5.21%	21.67%
SBIN	1033.40	15.00	1.47%	235.76	2405	1235	16.30%	730	41.56%	-9.59%	34.65%
SHRIRAMFIN	922.80	31.20	3.50%	58.98	538	1108	16.71%	567	62.89%	-8.41%	41.19%
SUNPHARMA	1699.00	5.40	0.32%	35.34	593	1851	8.22%	1548	9.75%	-5.58%	-0.61%
TATACONSUM	1054.00	12.00	1.15%	21.79	227	1221	13.67%	1007	4.65%	-5.61%	-3.11%
TATASTEEL	195.60	1.46	0.75%	281.04	547	216	9.63%	125	56.11%	-1.44%	39.33%
TCS	2472.00	21.30	0.87%	25.72	634	3631	31.91%	2346	5.36%	-3.35%	-25.08%
TECHM	1450.10	8.60	0.60%	14.77	215	1854	21.79%	1209	19.90%	8.89%	9.78%
TITAN	4244.00	146.80	3.58%	16.78	706	4378	3.07%	2925	45.09%	-0.01%	37.96%
TMPV	306.50	3.20	1.06%	64.21	196	744	58.80%	294	4.15%	-12.62%	-50.07%
TRENT	3834.80	284.20	8.00%	48.78	1838	6261	38.75%	3276	17.08%	3.01%	-31.06%
ULTRACEMCO	10969.00	349.00	3.29%	3.74	404	13110	16.33%	10325	6.24%	-8.49%	-4.61%
WIPRO	197.70	2.79	1.43%	232.82	460	273	27.61%	187	6.01%	1.18%	-19.73%

Disclaimer / Disclosures

ANALYST CERTIFICATION

I, Mrs. Vaishali Parekh B.com, Research Analyst, author and the name subscribed to this report, hereby certify that all of the views expressed in this research report accurately reflect our views about the subject issuer(s) or securities. We also certify that no part of our compensation was, is, or will be directly or indirectly related to the specific recommendation(s) or view(s) in this report.

Terms & conditions and other disclosures:

Prabhudas Lilladher Pvt. Ltd, Mumbai, India (hereinafter referred to as "PL") is engaged in the business of Stock Broking, Portfolio Manager, Depository Participant and distribution for third party financial products. PL is a subsidiary of Prabhudas Lilladher Advisory Services Pvt Ltd. which has its various subsidiaries engaged in business of commodity broking, investment banking, financial services (margin funding) and distribution of third party financial/other products, details in respect of which are available at www.plindia.com

This document has been prepared by the Research Division of PL and is meant for use by the recipient only as information and is not for circulation. This document is not to be reported or copied or made available to others without prior permission of PL. It should not be considered or taken as an offer to sell or a solicitation to buy or sell any security.

The information contained in this report has been obtained from sources that are considered to be reliable. However, PL has not independently verified the accuracy or completeness of the same. Neither PL nor any of its affiliates, its directors or its employees accepts any responsibility of whatsoever nature for the information, statements and opinion given, made available or expressed herein or for any omission therein.

Recipients of this report should be aware that past performance is not necessarily a guide to future performance and value of investments can go down as well. The suitability or otherwise of any investments will depend upon the recipient's particular circumstances and, in case of doubt, advice should be sought from an independent expert/advisor.

Either PL or its affiliates or its directors or its employees or its representatives or its clients or their relatives may have position(s), make market, act as principal or engage in transactions of securities of companies referred to in this report and they may have used the research material prior to publication.

PL may from time to time solicit or perform investment banking or other services for any company mentioned in this document.

PL is registered as Research Analyst under Securities and Exchange Board of India (Research Analysts) Regulations, 2014 PL submits that no material disciplinary action has been taken on us by any Regulatory Authority impacting Equity Research Analysis activities.

PL or its research analysts or its associates or his relatives do not have any financial interest in the subject company.

PL or its research analysts or its associates or his relatives do not have actual/beneficial ownership of one per cent or more securities of the subject company at the end of the month immediately preceding the date of publication of the research report.

PL or its research analysts or its associates or his relatives do not have any material conflict of interest at the time of publication of the research report.

PL or its associates might have received compensation from the subject company in the past twelve months.

PL or its associates might have managed or co-managed public offering of securities for the subject company in the past twelve months or mandated by the subject company for any other assignment in the past twelve months.

PL or its associates might have received any compensation for investment banking or merchant banking or brokerage services from the subject company in the past twelve months.

PL or its associates might have received any compensation for products or services other than investment banking or merchant banking or brokerage services from the subject company in the past twelve months PL or its associates might have received any compensation or other benefits from the subject company or third party in connection with the research report.

PL encourages independence in research report preparation and strives to minimize conflict in preparation of research report. PL or its analysts did not receive any compensation or other benefits from the subject Company or third party in connection with the preparation of the research report. PL or its Research Analysts do not have any material conflict of interest at the time of publication of this report.

It is confirmed that Mrs. Vaishali Parekh B.com, Research Analyst of this report has not received any compensation from the companies mentioned in the report in the preceding twelve months compensation of our Research Analysts is not based on any specific merchant banking, investment banking or brokerage service transactions.

The Research analysts for this report certifies that all of the views expressed in this report accurately reflect his or her personal views about the subject company or companies and its or their securities, and no part of his or her compensation was, is or will be, directly or indirectly related to specific recommendations or views expressed in this report.

The research analysts for this report has not served as an officer, director or employee of the subject company PL or its research analysts have not engaged in market making activity for the subject company

Our sales people, traders, and other professionals or affiliates may provide oral or written market commentary or trading strategies to our clients that reflect opinions that are contrary to the opinions expressed herein, and our proprietary trading and investing businesses may make investment decisions that are inconsistent with the recommendations expressed herein. In reviewing these materials, you should be aware that any or all of the foregoing, among other things, may give rise to real or potential conflicts of interest.

PL and its associates, their directors and employees may (a) from time to time, have a long or short position in, and buy or sell the securities of the subject company or (b) be engaged in any other transaction involving such securities and earn brokerage or other compensation or act as a market maker in the financial instruments of the subject company or act as an advisor or lender/borrower to the subject company or may have any other potential conflict of interests with respect to any recommendation and other related information and opinions.

Regd. Office: 3rd Floor, Sadhana House, 570, P. B. Marg, Behind Mahindra Tower, Worli, Mumbai - 400 018, India.