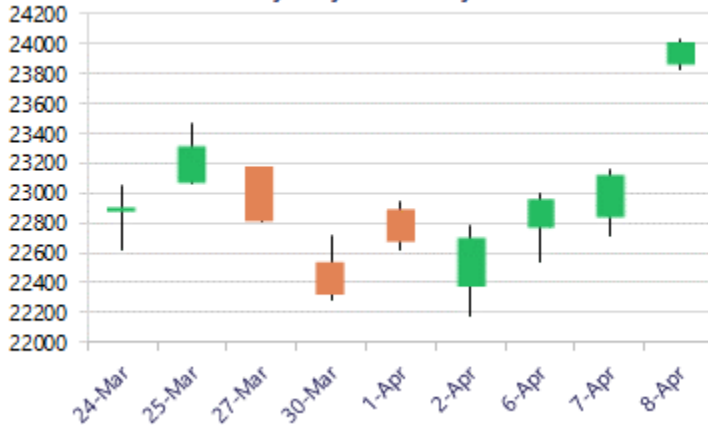


* Sensex 77562.90 + 2946.32

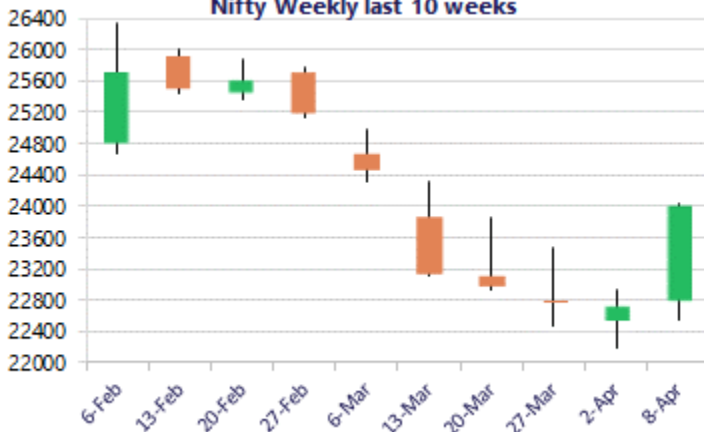
* Nifty 23997.35 + 873.70

* Bank Nifty 55703.90 + 2987.65

Nifty daily last 10 days



Nifty Weekly last 10 weeks



*Blue candle → Close rate > Open rate * Red candle → Close rate < Open rate

Market Preview

Nifty witnesses a robust move; ends near the 24000 zone.

Nifty witnessed a robust move post the ceasefire news between the US & Iran announcement to improve the bias once again with further gains expected in the coming days. BankNifty staged a strong bounce back to indicate a bullish candle formation to anticipate further rise in the coming sessions with the trend once again getting better. The market breadth was strong, with the advance-decline indicating a ratio of 10:1 at close.

Market Forecast

Nifty daily range 23500 - 24500

Nifty witnessed a big gap-up opening with ceasefire news between the US & IRAN, which is a strong and convincing turnaround from the low made near the 22180 level towards the 24000 zone with a bullish candle to indicate a strong optimistic closing near the 24000 level accompanied by a robust move from the broader markets to ease out the sentiment and to anticipate a further rise in the coming days. The index would have important support near the 23300-23500 band, which needs to be sustained, and on the upside, with the undertone going strong, one can expect higher targets of 24300 and 24500 levels in the coming days.

Bank Nifty has indicated a strong move past the 55000 zone to improve the overall bias, and a decisive move past the 50 EMA level of 56300 shall further strengthen the trend to anticipate a further rise in the coming days, with targets of 57300 and 58000 levels open. The index would have the immediate support of the 53000 level, and with frontline banking stocks beginning to gain momentum, the overall sentiment looks positive.

The support for the day is seen at 23500 levels, while the resistance is seen at 24500 levels. Bank Nifty would have the daily range of 54700–57000 levels.

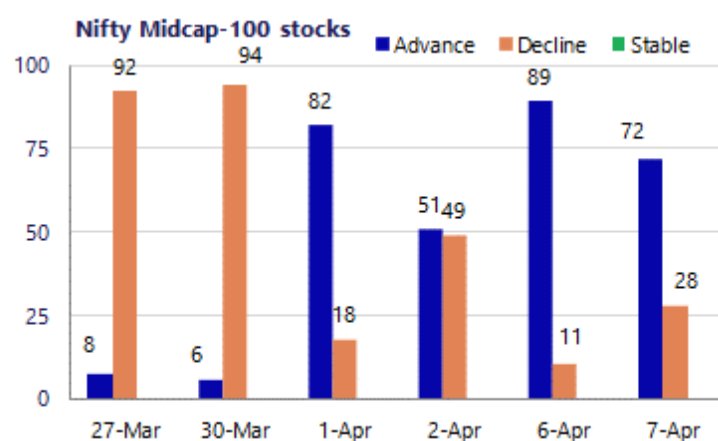
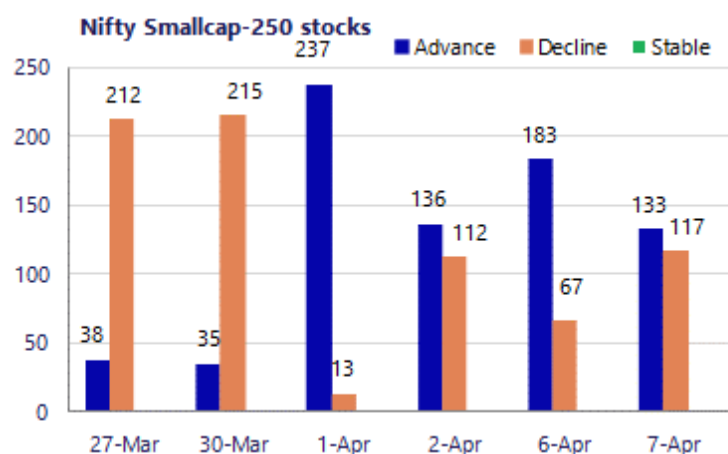
Sensex	Period	Closing	% Chng	Trend	Reversal	2 Sup	1 Sup	Pivot	1 Res	2 Res
Nifty	Daily	23997.35	3.78%	5	22485.80	23754	23876	23950	24072	24147
	Weekly	22713.10	-0.47%	-13	23313.05	21962	22338	22560	22935	23157
	Monthly	22331.40	-11.31%	-3	26623.20	20499	21415	23202	24118	25905
Bank Nifty	Daily	55703.90	5.67%	5	50368.60	54446	55075	55427	56056	56407
	Weekly	51548.75	-1.39%	-6	54758.90	49307	50428	51079	52200	52851
	Monthly	50275.35	-16.94%	-1	64512.75	43464	46870	53524	56929	63583
Sensex	Daily	77562.90	3.95%	5	72430.90	76820	77192	77414	77785	78007
	Weekly	73319.55	-0.36%	-13	75070.15	70829	72074	73019	74265	75210
	Monthly	71947.55	-11.49%	-3	85936.10	66196	69072	74852	77728	83509

Gainers - Losers (Nifty 500 Stocks)
Gainers

Company Name	Last Price	% Gain	Volume
Adani Green Ene	1029.65	11.27%	16042096
AB Capital	338.40	9.67%	7244037
Aegis Vopak	190.55	9.18%	1581395
Adani Energy	1,073.30	8.83%	4475127
Adani Enterpris	2,043.80	8.59%	4197437
3M India	31,595.00	7.98%	16254
Adani Total Gas	559.00	7.59%	15289080

Losers

Company Name	Last Price	% Loss	Volume
Avenue Supermar	4,368.80	-2.18%	1093542
ACME Solar	273.2	-1.44%	1333572
Astral Ltd	1,525.50	-1.23%	738612
Balrampur Chini	480.40	-0.62%	914614
AIA Engineering	3,674.50	-0.31%	78612
Akzo Nobel	2972	-0.28%	18500
Ajanta Pharma	2709	-0.10%	114489



Nifty Daily chart with RSI indicator



BankNifty Daily chart with RSI indicator



Breakouts - Cross above 200 DMA

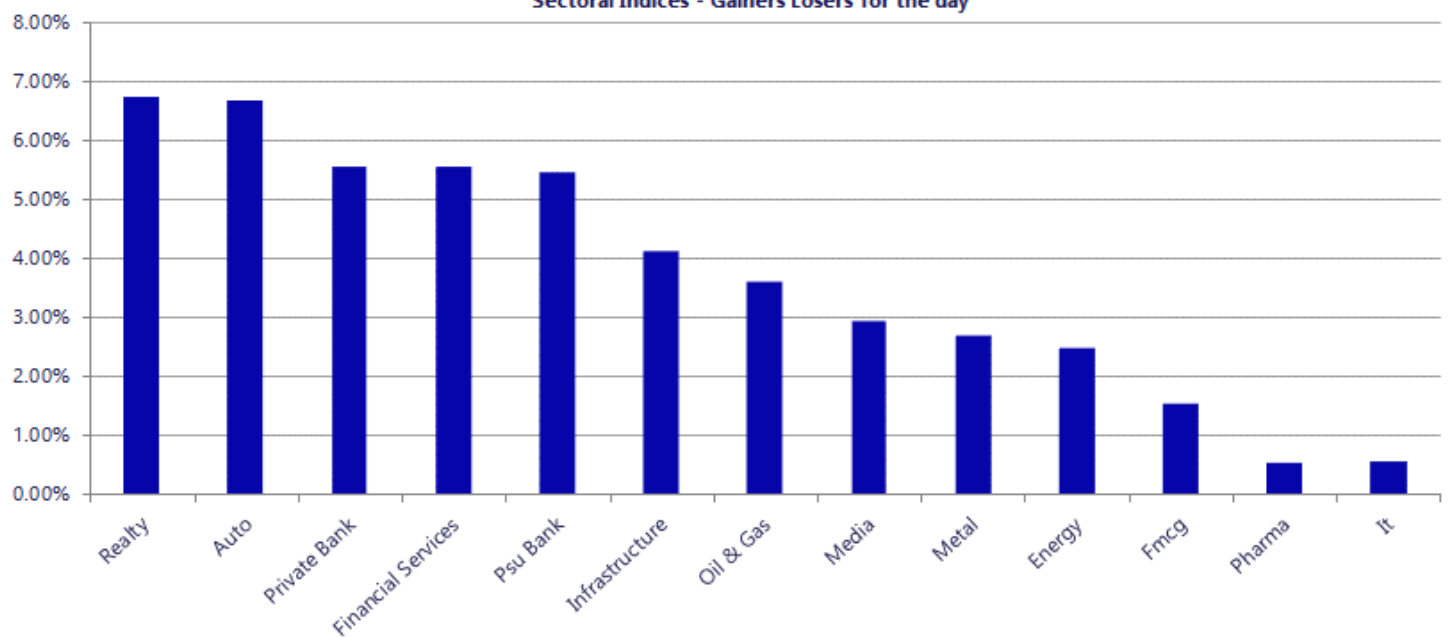
Company Name	LCP	Change %	200 DMA
WE WIN	54.79	14.53	47.84
Likhitha	242.48	12.57	215.4
Ashok Leyland	172.48	11.64	154.49
Man Industries	438	8.78	402.66
PVP Ventures	30.66	8.34	28.3
AB Capital	338.4	8.23	312.66
Muthoot Finance	3503.3	8.00	3243.71
United Food	255.8	7.93	237
MOTHERSON	118.11	7.68	109.69
Craftsman	7351.5	6.65	6893.26
Sat Kartar Shop	178.2	6.61	167.15
EPL	227.91	6.28	214.44
L&T Finance	275.46	6.27	259.21
Angel One	267.62	6.22	251.95
Canara Bank	139.19	5.78	131.58
Eicher Motors	7131	5.71	6745.77
Suyog Tele	769.05	5.67	727.79
Nippon	903.2	5.55	855.72

Breakdown - Cross below 200 DMA

Company Name	LCP	Change %	200 DMA
Ganesha Ecosph	1032.9	-5.36	1091.41
Dolphin Offshor	403	-1.75	410.17
Shree Renuka	27.72	-1.60	28.17
Uttam Sugar	243.49	-1.25	246.56
Deep Ind	448.9	-0.86	452.8
Soma Textile	98.05	-0.04	98.09

* Stocks crossing above its Simple Moving Average (200DMA)

* Stocks crossing below its Simple Moving Average (200DMA)

Sectoral Indices - Gainers Losers for the day


Nifty 50 Stocks - Summary Details											
Symbol	LTP	Chng	% Chng	Volume (lacs)	Turnover (crs.)	52w High	Diff with 52w H	52w Low	Diff with 52w L	365 days % chng	30 days % chng
NIFTY 50	23997.35	873.70	3.78%	6392.16	56554	26373	9.01%	22183	8.18%	-1.85%	6.49%
ADANIENT	2044.90	162.80	8.65%	41.98	853	2617	21.85%	1753	16.65%	0.25%	-7.85%
ADANIPTS	1452.00	71.00	5.14%	76.36	1121	1584	8.33%	1042	39.41%	-1.73%	28.34%
APOLLOHOSP	7396.00	69.50	0.95%	3.87	287	8100	8.69%	6491	13.95%	-4.25%	9.48%
ASIANPAINT	2288.00	101.80	4.66%	29.15	664	2986	23.37%	2115	8.18%	0.37%	-4.44%
AXISBANK	1333.40	83.30	6.66%	135.20	1785	1418	5.99%	1032	29.16%	1.34%	23.71%
BAJAJ-AUTO	9376.00	326.50	3.61%	4.74	446	10187	7.96%	7089	32.25%	-4.48%	25.05%
BAJAJFINSV	1787.50	103.10	6.12%	20.59	368	2195	18.56%	1597	11.93%	-4.36%	-6.08%
BAJFINANCE	917.00	61.90	7.24%	138.26	1263	1103	16.83%	788	16.39%	-3.49%	3.94%
BEL	434.15	6.35	1.48%	200.54	867	473	8.30%	256	69.46%	-7.32%	54.25%
BHARTIARTL	1861.00	30.70	1.68%	115.87	2153	2175	14.42%	1669	11.48%	-0.52%	8.17%
CIPLA	1216.60	14.20	1.18%	24.77	301	1673	27.28%	1166	4.37%	-7.92%	-15.07%
COALINDIA	449.00	-14.00	-3.02%	206.51	929	476	5.67%	356	26.12%	1.94%	17.28%
DRREDDY	1193.00	-3.10	-0.26%	20.63	246	1380	13.53%	1020	16.96%	-8.50%	7.68%
EICHERMOT	7170.00	564.50	8.55%	9.17	647	8230	12.88%	5000	43.40%	-5.91%	37.06%
ETERNAL	244.40	12.43	5.36%	617.96	1509	368	33.67%	195	25.46%	5.09%	13.57%
GRASIM	2767.20	146.20	5.58%	8.17	226	2979	7.11%	2466	12.24%	1.80%	6.84%
HCLTECH	1453.90	12.30	0.85%	42.39	615	1780	18.32%	1298	12.04%	7.16%	3.60%
HDFCBANK	817.50	45.50	5.89%	702.59	5690	1021	19.89%	727	12.50%	-4.61%	-7.58%
HDFCLIFE	597.50	15.80	2.72%	59.11	356	821	27.20%	555	7.64%	-10.63%	-12.87%
HINDALCO	951.85	-2.65	-0.28%	81.74	780	1030	7.57%	546	74.19%	-0.74%	67.48%
HINDUNILVR	2145.00	34.40	1.63%	37.94	819	2750	22.00%	2023	6.06%	-3.63%	-6.30%
ICICIBANK	1309.10	63.60	5.11%	251.43	3286	1500	12.73%	1188	10.23%	-0.33%	0.71%
INDIGO	4614.00	345.20	8.09%	55.38	2582	6233	25.97%	3895	18.45%	4.77%	-10.53%
INFY	1346.90	7.50	0.56%	160.29	2154	1728	22.05%	1215	10.85%	2.94%	-5.73%
ITC	302.30	3.85	1.29%	223.09	676	444	31.95%	287	5.33%	-2.39%	-26.72%
JIOFIN	248.00	12.67	5.38%	199.09	488	339	26.76%	203	22.11%	3.61%	10.32%
JSWSTEEL	1195.10	43.20	3.75%	23.84	284	1285	6.97%	905	32.03%	-3.13%	25.19%
KOTAKBANK	379.50	16.55	4.56%	301.61	1136	460	17.57%	346	9.84%	-5.08%	-7.67%
LT	4010.00	286.70	7.70%	73.68	2943	4440	9.68%	2965	35.23%	1.52%	26.85%
M&M	3212.50	205.90	6.85%	42.28	1355	3840	16.34%	2425	32.47%	-3.60%	27.30%
MARUTI	13570.00	772.00	6.03%	10.26	1398	17370	21.88%	11059	22.70%	-4.16%	18.42%
MAXHEALTH	940.55	8.15	0.87%	33.50	317	1314	28.44%	903	4.16%	-9.74%	-12.38%
NESTLEIND	1214.60	-8.20	-0.67%	16.39	200	1340	9.39%	1080	12.46%	-3.02%	6.76%
NTPC	373.00	4.15	1.13%	194.91	724	395	5.45%	316	18.21%	-2.00%	5.68%
ONGC	285.85	-0.80	-0.28%	420.68	1182	293	2.44%	205	39.44%	2.47%	26.11%
POWERGRID	295.00	-0.40	-0.14%	108.87	322	322	8.39%	250	18.00%	-1.39%	2.09%
RELIANCE	1349.40	44.80	3.43%	218.17	2930	1612	16.28%	1115	21.04%	-3.94%	14.14%
SBILIFE	1912.30	70.90	3.85%	11.04	210	2132	10.30%	1431	33.68%	-1.51%	28.51%
SBIN	1065.00	34.60	3.36%	285.34	3049	1235	13.74%	730	45.89%	-6.82%	38.56%
SHRIRAMFIN	1025.00	94.35	10.14%	182.57	1857	1108	7.49%	567	80.94%	1.74%	59.79%
SUNPHARMA	1713.00	-5.00	-0.29%	48.59	829	1851	7.47%	1548	10.66%	-4.80%	1.46%
TATACONSUM	1069.00	7.00	0.66%	19.50	209	1221	12.44%	1007	6.14%	-4.27%	-0.07%
TATASTEEL	204.25	6.12	3.09%	370.15	757	216	5.64%	125	63.01%	2.92%	56.78%
TCS	2561.10	21.30	0.84%	47.69	1220	3631	29.46%	2346	9.16%	0.14%	-22.22%
TECHM	1453.50	-19.90	-1.35%	27.37	398	1854	21.60%	1209	20.18%	9.15%	10.58%
TITAN	4485.00	254.40	6.01%	38.35	1706	4505	0.44%	2925	53.33%	5.66%	43.64%
TMPV	335.70	27.00	8.75%	209.29	694	744	54.88%	294	14.07%	-4.29%	-42.99%
TRENT	3909.00	86.00	2.25%	14.26	561	6261	37.57%	3276	19.34%	5.00%	-18.00%
ULTRACEMCO	11590.00	654.00	5.98%	6.13	713	13110	11.59%	10325	12.25%	-3.31%	2.84%
WIPRO	203.59	-1.13	-0.55%	220.84	450	273	25.45%	187	9.16%	4.19%	-17.66%

Disclaimer / Disclosures

ANALYST CERTIFICATION

I, Mrs. Vaishali Parekh B.com, Research Analyst, author and the name subscribed to this report, hereby certify that all of the views expressed in this research report accurately reflect our views about the subject issuer(s) or securities. We also certify that no part of our compensation was, is, or will be directly or indirectly related to the specific recommendation(s) or view(s) in this report.

Terms & conditions and other disclosures:

Prabhudas Lilladher Pvt. Ltd, Mumbai, India (hereinafter referred to as "PL") is engaged in the business of Stock Broking, Portfolio Manager, Depository Participant and distribution for third party financial products. PL is a subsidiary of Prabhudas Lilladher Advisory Services Pvt Ltd. which has its various subsidiaries engaged in business of commodity broking, investment banking, financial services (margin funding) and distribution of third party financial/other products, details in respect of which are available at www.plindia.com

This document has been prepared by the Research Division of PL and is meant for use by the recipient only as information and is not for circulation. This document is not to be reported or copied or made available to others without prior permission of PL. It should not be considered or taken as an offer to sell or a solicitation to buy or sell any security.

The information contained in this report has been obtained from sources that are considered to be reliable. However, PL has not independently verified the accuracy or completeness of the same. Neither PL nor any of its affiliates, its directors or its employees accepts any responsibility of whatsoever nature for the information, statements and opinion given, made available or expressed herein or for any omission therein.

Recipients of this report should be aware that past performance is not necessarily a guide to future performance and value of investments can go down as well. The suitability or otherwise of any investments will depend upon the recipient's particular circumstances and, in case of doubt, advice should be sought from an independent expert/advisor.

Either PL or its affiliates or its directors or its employees or its representatives or its clients or their relatives may have position(s), make market, act as principal or engage in transactions of securities of companies referred to in this report and they may have used the research material prior to publication.

PL may from time to time solicit or perform investment banking or other services for any company mentioned in this document.

PL is registered as Research Analyst under Securities and Exchange Board of India (Research Analysts) Regulations, 2014 PL submits that no material disciplinary action has been taken on us by any Regulatory Authority impacting Equity Research Analysis activities.

PL or its research analysts or its associates or his relatives do not have any financial interest in the subject company.

PL or its research analysts or its associates or his relatives do not have actual/beneficial ownership of one per cent or more securities of the subject company at the end of the month immediately preceding the date of publication of the research report.

PL or its research analysts or its associates or his relatives do not have any material conflict of interest at the time of publication of the research report.

PL or its associates might have received compensation from the subject company in the past twelve months.

PL or its associates might have managed or co-managed public offering of securities for the subject company in the past twelve months or mandated by the subject company for any other assignment in the past twelve months.

PL or its associates might have received any compensation for investment banking or merchant banking or brokerage services from the subject company in the past twelve months.

PL or its associates might have received any compensation for products or services other than investment banking or merchant banking or brokerage services from the subject company in the past twelve months PL or its associates might have received any compensation or other benefits from the subject company or third party in connection with the research report.

PL encourages independence in research report preparation and strives to minimize conflict in preparation of research report. PL or its analysts did not receive any compensation or other benefits from the subject Company or third party in connection with the preparation of the research report. PL or its Research Analysts do not have any material conflict of interest at the time of publication of this report.

It is confirmed that Mrs. Vaishali Parekh B.com, Research Analyst of this report has not received any compensation from the companies mentioned in the report in the preceding twelve months compensation of our Research Analysts is not based on any specific merchant banking, investment banking or brokerage service transactions.

The Research analysts for this report certifies that all of the views expressed in this report accurately reflect his or her personal views about the subject company or companies and its or their securities, and no part of his or her compensation was, is or will be, directly or indirectly related to specific recommendations or views expressed in this report.

The research analysts for this report has not served as an officer, director or employee of the subject company PL or its research analysts have not engaged in market making activity for the subject company

Our sales people, traders, and other professionals or affiliates may provide oral or written market commentary or trading strategies to our clients that reflect opinions that are contrary to the opinions expressed herein, and our proprietary trading and investing businesses may make investment decisions that are inconsistent with the recommendations expressed herein. In reviewing these materials, you should be aware that any or all of the foregoing, among other things, may give rise to real or potential conflicts of interest.

PL and its associates, their directors and employees may (a) from time to time, have a long or short position in, and buy or sell the securities of the subject company or (b) be engaged in any other transaction involving such securities and earn brokerage or other compensation or act as a market maker in the financial instruments of the subject company or act as an advisor or lender/borrower to the subject company or may have any other potential conflict of interests with respect to any recommendation and other related information and opinions.

Regd. Office: 3rd Floor, Sadhana House, 570, P. B. Marg, Behind Mahindra Tower, Worli, Mumbai - 400 018, India.