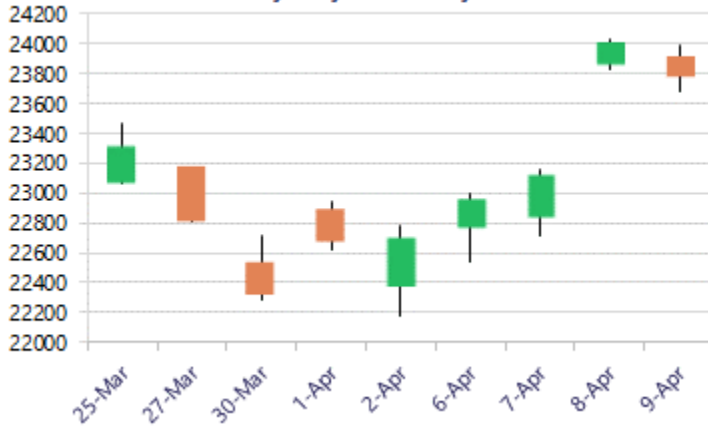


* Sensex 76631.65 - 931.25

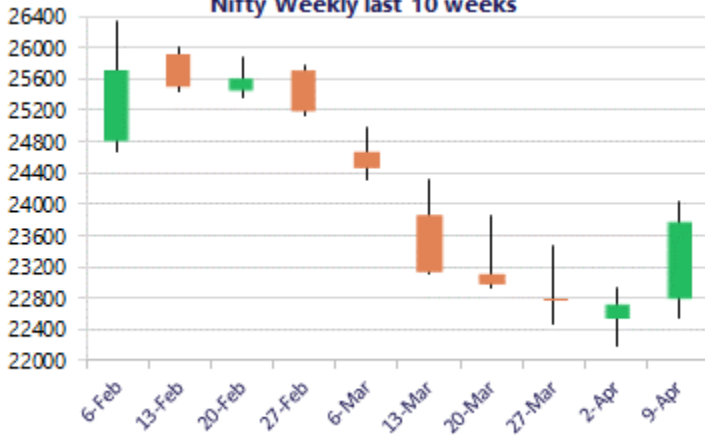
* Nifty 23775.10 - 222.25

* Bank Nifty 54821.70 - 882.20

Nifty daily last 10 days



Nifty Weekly last 10 weeks



*Blue candle → Close rate > Open rate * Red candle → Close rate < Open rate

Market Preview

Nifty finds resistance near 24000 zone

Nifty witnessed profit booking after resisting near the 24000 zone and closed near the 23800 level with sentiment still maintained with mixed cues and uncertainties. BankNifty gave off almost 1000 points from 55700 zone with profit booking witnessed among the banking stocks to end near the 54800 level. The market breadth was almost flat with the advance decline indicating a neutral ratio at close.

Market Forecast

Nifty daily range 23500 - 24000

Nifty, after the strong move witnessed in the last session the index found resistance near the 24000 zone and slipped down with profit booking seen to end below the 23800 level with uncertainties still looming around and sentiment maintained with a cautious approach. The index would need to stabilise and consolidate near the 23500-24000 band to establish conviction and clarity for further positive move in the coming days. The index would have the important resistance near the 24300 level while on the downside 23000 zone would be the near-term support as of now.

BankNifty witnessed resistance near the 55700 zone and erased the gains with profit booking seen to slip down and close the session near 54800 level with sentiment still gripped with a cautious approach with 53500 level positioned as the important support zone from current level. The index on the upside would need a decisive breach and sustain above the significant 50EMA level at 56200 zone to establish conviction and thereafter, expect for further upward move in the coming days.

The support for the day is seen at 23500 levels, while the resistance is seen at 24000 levels. BankNifty would have the daily range of 53500-56200 levels.

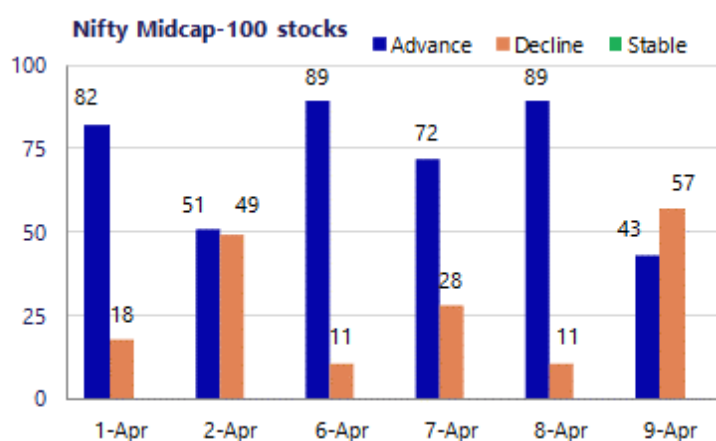
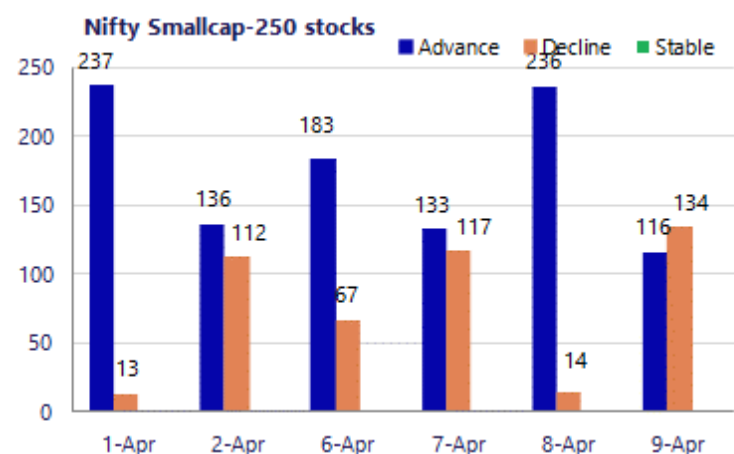
Sensex	Period	Closing	% Chng	Trend	Reversal	2 Sup	1 Sup	Pivot	1 Res	2 Res
Nifty	Daily	23775.10	-0.93%	6	22865.45	23508	23642	23816	23950	24124
	Weekly	22713.10	-0.47%	-13	23313.05	21962	22338	22560	22935	23157
	Monthly	22331.40	-11.31%	-3	26623.20	20499	21415	23202	24118	25905
Bank Nifty	Daily	54821.70	-1.58%	6	51699.40	54054	54438	55011	55394	55967
	Weekly	51548.75	-1.39%	-6	54758.90	49307	50428	51079	52200	52851
	Monthly	50275.35	-16.94%	-1	64512.75	43464	46870	53524	56929	63583
Sensex	Daily	76631.65	-1.20%	6	73689.30	75722	76177	76803	77258	77884
	Weekly	73319.55	-0.36%	-13	75070.15	70829	72074	73019	74265	75210
	Monthly	71947.55	-11.49%	-3	85936.10	66196	69072	74852	77728	83509

Gainers - Losers (Nifty 500 Stocks)
Gainers

Company Name	Last Price	% Gain	Volume
Angel One	281.8	5.30%	29668459
Anand Rathi	3,553.70	4.57%	1704355
Anthem Bioscien	720.25	4.28%	745924
APTUS VALUE	217.83	2.80%	5580539
360 ONE WAM	998.10	2.72%	3056871
Apar Ind	10,767.00	2.65%	195421
Astral Ltd	1,563.70	2.50%	908832

Losers

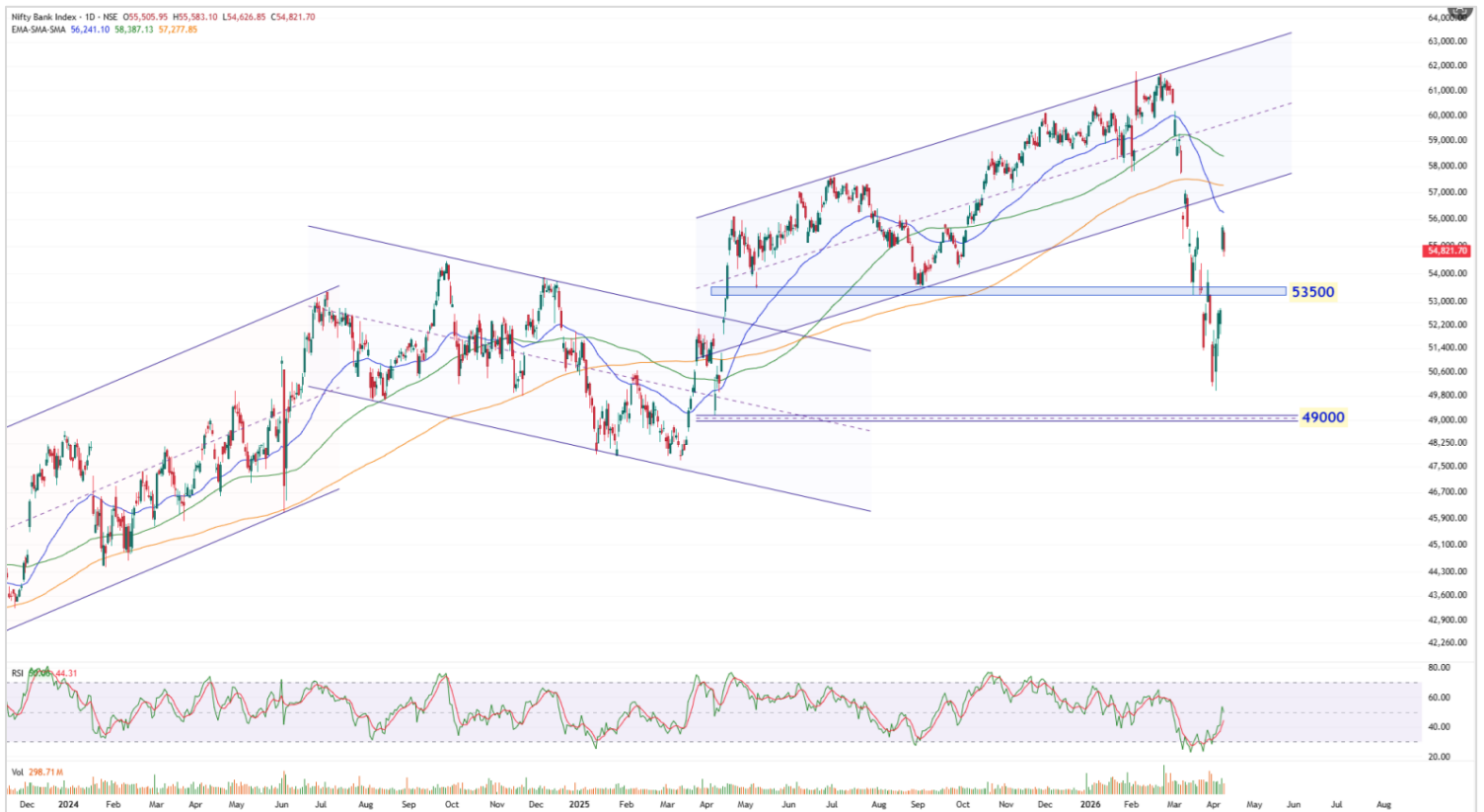
Company Name	Last Price	% Loss	Volume
BLS Internation	286.91	-3.69%	8362745
CarTrade Tech	1816.2	-2.96%	199869
Ambuja Cements	434.05	-2.84%	4901055
Authum Invest	430.25	-2.53%	313711
Brigade Ent	701.05	-2.37%	626609
Bharat Forge	1739.4	-2.36%	1861506
Britannia	5475	-2.14%	624918



Nifty Daily chart with RSI indicator



BankNifty Daily chart with RSI indicator

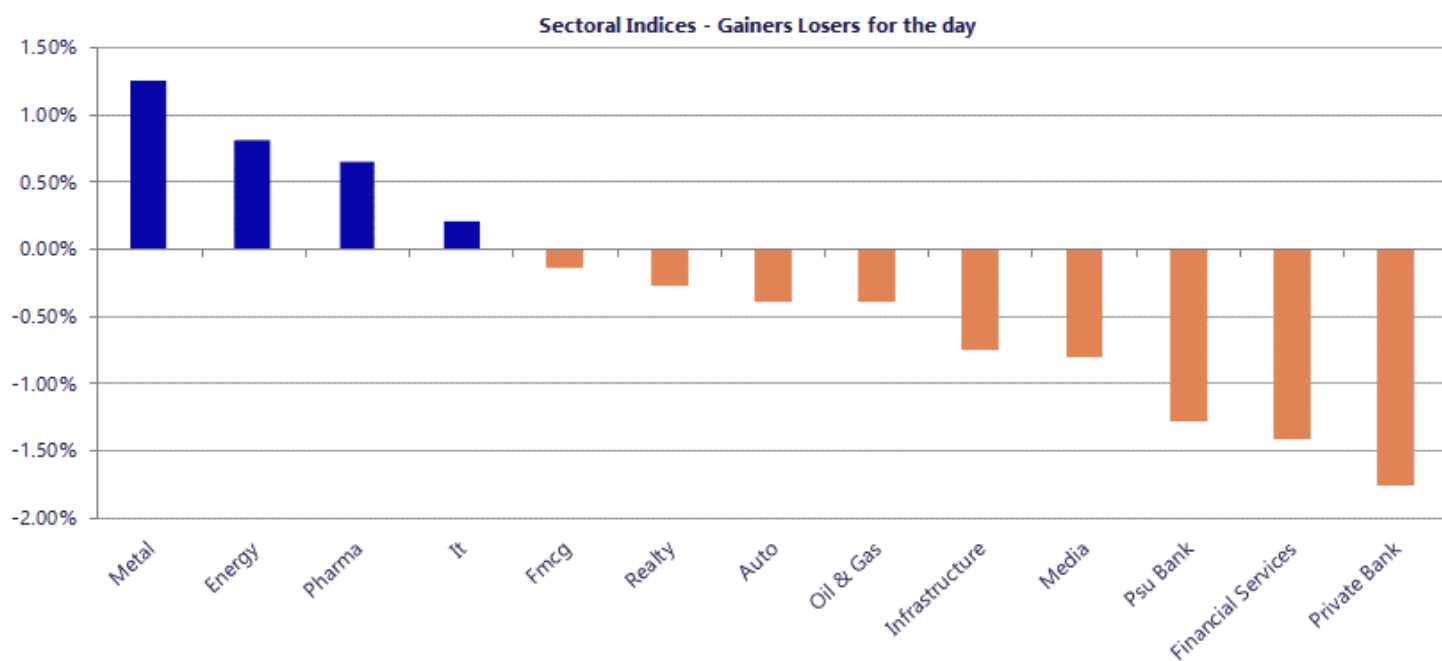


Breakouts - Cross above 200 DMA			
Company Name	LCP	Change %	200 DMA
Bafna Pharma	136.13	9.87	123.9
WOL 3D India	149.55	6.08	140.98
Sun Pharma Adv	146.17	5.87	138.07
GHCL Textiles	82.78	4.61	79.13
Dynamic Service	131.85	4.37	126.33
Zen Tech	1533.2	4.14	1472.3
SEL Mgf Company	32.44	2.92	31.52
Neuland Lab	14723	2.70	14335.91
NEXT30ADD	40.64	2.39	39.69
Kopran	156.02	2.26	152.57
Vital Chemtech	57.51	2.24	56.25
ISGEC Heavy Eng	952.95	1.79	936.23
Ambika Cotton	1404.2	1.74	1380.18
InfoBeans Tech	157.48	1.25	155.53
Kataria Industr	103.95	1.22	102.7
Nexus Select	157.37	1.05	155.74
Effwa Infra & R	224.1	0.77	222.39
Apollo Hospital	7481.5	0.56	7439.78

* Stocks crossing above its Simple Moving Average (200DMA)

Breakdown - Cross below 200 DMA			
Company Name	LCP	Change %	200 DMA
Kernex Micro	1108.6	-2.73	1139.68
Nelcast	122.67	-2.72	126.1
Senco Gold	324	-2.55	332.47
CSB Bank	395.55	-2.52	405.79
Equitas Bank	59.37	-2.35	60.8
IndusInd Bank	814.55	-2.10	832
IZMO	709.25	-2.05	724.1
HT Media	23.21	-1.82	23.64
Baid Finserv	10.97	-1.35	11.12
Chandan Healthc	261.95	-1.27	265.31
AYM Syntex	185.64	-1.27	188.02
Regency Ceramic	44.84	-1.19	45.38
NRB Industrial	28.75	-1.17	29.09
Universal Cable	747	-1.04	754.85
Tatva Chintan	1180	-0.95	1191.34
UTI NIF10GETF	25.84	-0.62	26
Flair Writing	304.95	-0.61	306.83
SKM Egg Product	173.52	-0.58	174.53

* Stocks crossing below its Simple Moving Average (200DMA)



Nifty 50 Stocks - Summary Details											
Symbol	LTP	Chng	% Chng	Volume (lacs)	Turnover (crs.)	52w High	Diff with 52w H	52w Low	Diff with 52w L	365 days % chng	30 days % chng
NIFTY 50	23775.10	-222.25	-0.93%	4665.22	40439	26373	9.85%	22183	7.18%	-1.05%	6.14%
ADANIENT	2040.00	-3.80	-0.19%	24.81	506	2617	22.03%	1753	16.37%	2.04%	-6.07%
ADANIPTS	1442.20	-11.10	-0.76%	31.59	455	1584	8.95%	1111	29.81%	1.47%	27.43%
APOLLOHOSP	7447.50	46.00	0.62%	4.17	311	8100	8.05%	6665	11.74%	-4.26%	8.98%
ASIANPAINT	2267.10	-15.30	-0.67%	19.80	450	2986	24.07%	2115	7.19%	2.08%	-5.97%
AXISBANK	1319.50	-13.50	-1.01%	65.42	865	1418	6.97%	1043	26.57%	2.42%	24.29%
BAJAJ-AUTO	9518.00	152.00	1.62%	5.39	513	10187	6.57%	7346	29.57%	1.44%	25.69%
BAJAJFINSV	1761.00	-23.60	-1.32%	15.11	268	2195	19.77%	1597	10.27%	-4.37%	-7.11%
BAJFINANCE	901.80	-13.25	-1.45%	94.55	855	1103	18.20%	788	14.46%	-3.86%	3.23%
BEL	440.00	6.90	1.59%	199.15	875	473	7.07%	277	59.07%	-3.79%	57.06%
BHARTIARTL	1859.70	-1.90	-0.10%	101.13	1878	2175	14.48%	1707	8.96%	-0.37%	8.40%
CIPLA	1225.00	9.10	0.75%	25.45	312	1673	26.78%	1166	5.09%	-7.55%	-13.46%
COALINDIA	454.40	5.15	1.15%	94.67	429	476	4.54%	369	23.26%	3.83%	21.30%
DRREDDY	1210.00	18.60	1.56%	27.47	332	1380	12.30%	1062	13.97%	-5.98%	10.60%
EICHERMOT	7119.50	-11.50	-0.16%	6.48	462	8230	13.49%	5110	39.33%	-2.02%	35.40%
ETERNAL	237.60	-6.02	-2.47%	380.55	910	368	35.51%	210	13.22%	3.50%	12.40%
GRASIM	2741.30	-14.90	-0.54%	7.89	216	2979	7.98%	2503	9.54%	2.24%	7.18%
HCLTECH	1465.80	4.80	0.33%	31.01	451	1780	17.66%	1298	12.95%	7.89%	6.22%
HDFCBANK	798.00	-18.10	-2.22%	488.78	3913	1021	21.80%	727	9.82%	-5.08%	-9.58%
HDFCLIFE	593.15	-5.15	-0.86%	39.11	231	821	27.73%	555	6.85%	-9.27%	-13.38%
HINDALCO	983.25	31.45	3.30%	93.86	920	1030	4.52%	552	78.06%	4.01%	74.34%
HINDUNILVR	2130.50	-15.10	-0.70%	25.06	535	2750	22.53%	2023	5.34%	-2.92%	-9.34%
ICICIBANK	1283.50	-25.70	-1.96%	229.22	2950	1500	14.43%	1188	8.08%	0.40%	-1.33%
INDIGO	4448.90	-166.60	-3.61%	19.05	857	6233	28.62%	3895	14.21%	5.01%	-14.34%
INFY	1331.50	-14.70	-1.09%	148.94	1974	1728	22.95%	1215	9.58%	1.25%	-5.14%
ITC	303.00	0.55	0.18%	176.90	536	444	31.79%	287	5.57%	-0.98%	-27.22%
JIOFIN	238.99	-7.87	-3.19%	211.19	509	339	29.42%	217	10.33%	2.90%	8.18%
JSWSTEEL	1209.20	14.90	1.25%	25.64	309	1285	5.88%	934	29.49%	1.39%	27.88%
KOTAKBANK	371.85	-8.30	-2.18%	124.22	464	460	19.23%	346	7.63%	-3.75%	-9.42%
LT	3890.30	-115.60	-2.89%	44.14	1731	4440	12.38%	3048	27.63%	1.25%	27.38%
M&M	3158.00	-52.10	-1.62%	30.39	963	3840	17.76%	2454	28.69%	-0.93%	25.16%
MARUTI	13550.00	-52.00	-0.38%	5.50	746	17370	21.99%	11289	20.03%	0.31%	18.26%
MAXHEALTH	953.85	12.70	1.35%	35.59	339	1314	27.43%	903	5.63%	-8.42%	-15.07%
NESTLEIND	1230.00	16.30	1.34%	12.59	154	1340	8.24%	1085	13.40%	-0.47%	4.91%
NTPC	379.70	5.55	1.48%	185.02	704	395	3.75%	316	20.33%	0.92%	8.69%
ONGC	288.60	3.10	1.09%	135.84	391	293	1.50%	219	31.67%	6.57%	30.04%
POWERGRID	297.80	2.95	1.00%	176.43	526	322	7.52%	250	19.12%	0.88%	1.50%
RELIANCE	1330.00	-17.80	-1.32%	207.20	2763	1612	17.48%	1163	14.33%	-6.60%	12.20%
SBILIFE	1911.00	3.40	0.18%	13.29	253	2132	10.37%	1458	31.07%	-0.08%	28.98%
SBIN	1040.45	-21.00	-1.98%	247.72	2596	1235	15.73%	741	40.41%	-5.28%	40.18%
SHRIRAMFIN	995.55	-27.65	-2.70%	76.66	768	1108	10.15%	567	75.74%	0.85%	59.40%
SUNPHARMA	1715.00	0.40	0.02%	32.76	563	1851	7.36%	1548	10.79%	-5.11%	3.80%
TATACONSUM	1079.00	10.50	0.98%	21.67	233	1221	11.62%	1007	7.13%	-2.13%	-0.99%
TATASTEEL	204.83	0.65	0.32%	368.35	758	216	5.37%	125	63.47%	7.24%	61.06%
TCS	2590.00	30.80	1.20%	56.28	1451	3631	28.66%	2346	10.39%	2.48%	-20.22%
TECHM	1461.10	9.70	0.67%	18.05	262	1854	21.19%	1264	15.56%	9.34%	14.80%
TITAN	4425.00	-67.50	-1.50%	13.85	616	4505	1.78%	3091	43.17%	6.39%	39.41%
TMPV	332.80	-1.95	-0.58%	111.10	373	744	55.27%	294	13.08%	0.24%	-42.91%
TRENT	3850.00	-55.00	-1.41%	7.50	291	6261	38.51%	3276	17.54%	4.35%	-16.67%
ULTRACEMCO	11418.00	-185.00	-1.59%	3.31	379	13110	12.91%	10325	10.59%	0.35%	0.18%
WIPRO	203.18	-0.24	-0.12%	145.39	295	273	25.60%	187	8.94%	2.23%	-14.14%

Disclaimer / Disclosures

ANALYST CERTIFICATION

I, Mrs. Vaishali Parekh B.com, Research Analyst, author and the name subscribed to this report, hereby certify that all of the views expressed in this research report accurately reflect our views about the subject issuer(s) or securities. We also certify that no part of our compensation was, is, or will be directly or indirectly related to the specific recommendation(s) or view(s) in this report.

Terms & conditions and other disclosures:

Prabhudas Lilladher Pvt. Ltd, Mumbai, India (hereinafter referred to as "PL") is engaged in the business of Stock Broking, Portfolio Manager, Depository Participant and distribution for third party financial products. PL is a subsidiary of Prabhudas Lilladher Advisory Services Pvt Ltd. which has its various subsidiaries engaged in business of commodity broking, investment banking, financial services (margin funding) and distribution of third party financial/other products, details in respect of which are available at www.plindia.com

This document has been prepared by the Research Division of PL and is meant for use by the recipient only as information and is not for circulation. This document is not to be reported or copied or made available to others without prior permission of PL. It should not be considered or taken as an offer to sell or a solicitation to buy or sell any security.

The information contained in this report has been obtained from sources that are considered to be reliable. However, PL has not independently verified the accuracy or completeness of the same. Neither PL nor any of its affiliates, its directors or its employees accepts any responsibility of whatsoever nature for the information, statements and opinion given, made available or expressed herein or for any omission therein.

Recipients of this report should be aware that past performance is not necessarily a guide to future performance and value of investments can go down as well. The suitability or otherwise of any investments will depend upon the recipient's particular circumstances and, in case of doubt, advice should be sought from an independent expert/advisor.

Either PL or its affiliates or its directors or its employees or its representatives or its clients or their relatives may have position(s), make market, act as principal or engage in transactions of securities of companies referred to in this report and they may have used the research material prior to publication.

PL may from time to time solicit or perform investment banking or other services for any company mentioned in this document.

PL is registered as Research Analyst under Securities and Exchange Board of India (Research Analysts) Regulations, 2014 PL submits that no material disciplinary action has been taken on us by any Regulatory Authority impacting Equity Research Analysis activities.

PL or its research analysts or its associates or his relatives do not have any financial interest in the subject company.

PL or its research analysts or its associates or his relatives do not have actual/beneficial ownership of one per cent or more securities of the subject company at the end of the month immediately preceding the date of publication of the research report.

PL or its research analysts or its associates or his relatives do not have any material conflict of interest at the time of publication of the research report.

PL or its associates might have received compensation from the subject company in the past twelve months.

PL or its associates might have managed or co-managed public offering of securities for the subject company in the past twelve months or mandated by the subject company for any other assignment in the past twelve months.

PL or its associates might have received any compensation for investment banking or merchant banking or brokerage services from the subject company in the past twelve months.

PL or its associates might have received any compensation for products or services other than investment banking or merchant banking or brokerage services from the subject company in the past twelve months PL or its associates might have received any compensation or other benefits from the subject company or third party in connection with the research report.

PL encourages independence in research report preparation and strives to minimize conflict in preparation of research report. PL or its analysts did not receive any compensation or other benefits from the subject Company or third party in connection with the preparation of the research report. PL or its Research Analysts do not have any material conflict of interest at the time of publication of this report.

It is confirmed that Mrs. Vaishali Parekh B.com, Research Analyst of this report has not received any compensation from the companies mentioned in the report in the preceding twelve months compensation of our Research Analysts is not based on any specific merchant banking, investment banking or brokerage service transactions.

The Research analysts for this report certifies that all of the views expressed in this report accurately reflect his or her personal views about the subject company or companies and its or their securities, and no part of his or her compensation was, is or will be, directly or indirectly related to specific recommendations or views expressed in this report.

The research analysts for this report has not served as an officer, director or employee of the subject company PL or its research analysts have not engaged in market making activity for the subject company

Our sales people, traders, and other professionals or affiliates may provide oral or written market commentary or trading strategies to our clients that reflect opinions that are contrary to the opinions expressed herein, and our proprietary trading and investing businesses may make investment decisions that are inconsistent with the recommendations expressed herein. In reviewing these materials, you should be aware that any or all of the foregoing, among other things, may give rise to real or potential conflicts of interest.

PL and its associates, their directors and employees may (a) from time to time, have a long or short position in, and buy or sell the securities of the subject company or (b) be engaged in any other transaction involving such securities and earn brokerage or other compensation or act as a market maker in the financial instruments of the subject company or act as an advisor or lender/borrower to the subject company or may have any other potential conflict of interests with respect to any recommendation and other related information and opinions.

Regd. Office: 3rd Floor, Sadhana House, 570, P. B. Marg, Behind Mahindra Tower, Worli, Mumbai - 400 018, India.