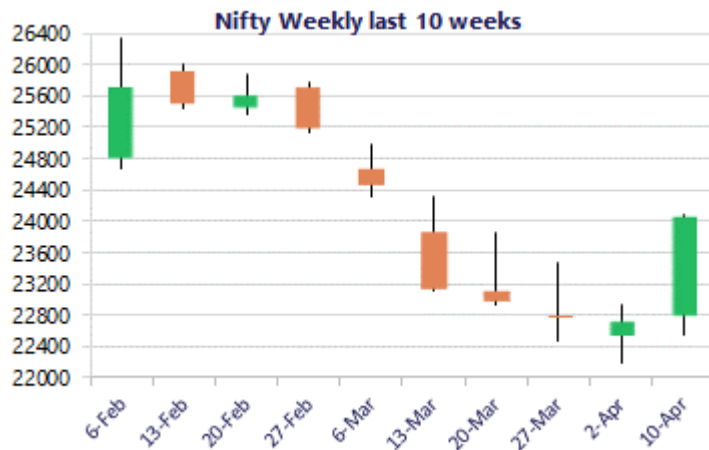
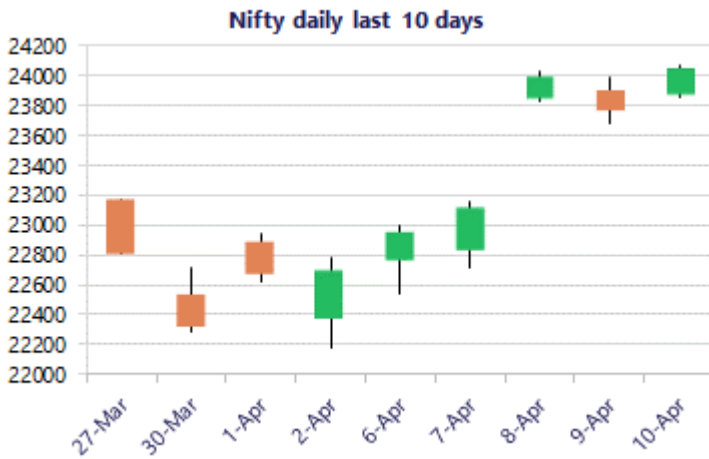


* Sensex 77550.25 + 918.60

* Nifty 24050.60 + 275.50

* Bank Nifty 55912.75 + 1091.05



*Blue candle → Close rate > Open rate * Red candle → Close rate < Open rate

Market Preview

Nifty closes above the 24000 zone

Nifty witnessed a strong move with a gap up opening and sustained the levels to close above the 24000 zone with active participation witnessed across the board. BankNifty gained momentum during the session and closed near the 56000 zone with bias slightly easing out but still needs a clear confirmation. The market breadth was strong with the advance decline indicating a ratio of 5:1 at close.

Market Forecast

Nifty daily range 23800 - 24300

Nifty, once again regained strength with a gap up opening near the 23900 zone and steadily maintained above the 24000 zone for rest part of the session with the broader markets showing strong traction to close on a positive note near 24050 level. As mentioned earlier, the index would need to stabilise and sustain above the 23800 zone as of now to establish conviction and clarity for further positive move in the coming days and at the same time, on the downside would need to sustain the near-term support of 23400 zone as of now.

BankNifty witnessed a strong bounce back after the gap up opening session to end near the 56000 zone with bias and sentiment slightly eased out but still maintained with a cautious approach as of now. The index would have the important resistance zone near the 57000 level which needs to be breached above decisively while at the same time would need to sustain the 53500 level positioned as the important support zone from current zone.

The support for the day is seen at 23800 levels, while the resistance is seen at 24300 levels. BankNifty would have the daily range of 55000-57000 levels.

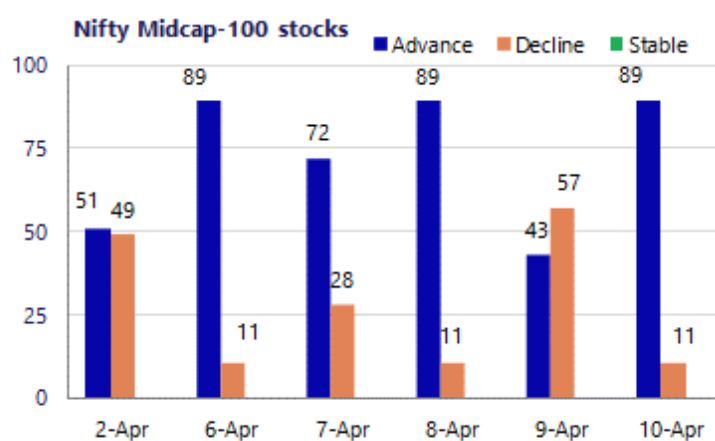
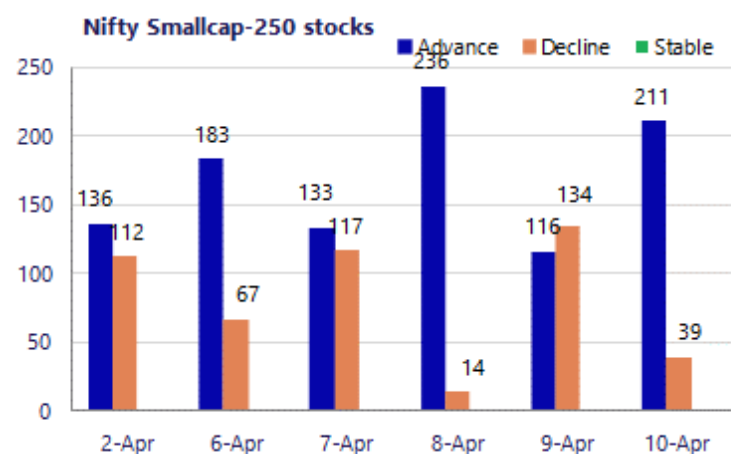
Sensex	Period	Closing	% Chng	Trend	Reversal	2 Sup	1 Sup	Pivot	1 Res	2 Res
Nifty	Daily	24050.60	1.16%	7	23236.35	23776	23913	23994	24131	24211
	Weekly	24050.60	5.89%	1	22578.10	22025	23038	23556	24569	25087
	Monthly	22331.40	-11.31%	-3	26623.20	20499	21415	23202	24118	25905
Bank Nifty	Daily	55912.75	1.99%	7	52967.25	54846	55379	55679	56212	56512
	Weekly	55912.75	8.47%	1	53295.70	49467	52690	54334	57557	59202
	Monthly	50275.35	-16.94%	-1	64512.75	43464	46870	53524	56929	63583
Sensex	Daily	77550.25	1.20%	7	74914.40	76570	77060	77341	77831	78113
	Weekly	77550.25	5.77%	1	72197.45	71065	74307	75971	79214	80878
	Monthly	71947.55	-11.49%	-3	85936.10	66196	69072	74852	77728	83509

Gainers - Losers (Nifty 500 Stocks)
Gainers

Company Name	Last Price	% Gain	Volume
Adani Energy	1157.9	7.34%	7931340
Adani Total Gas	581.05	5.66%	7672929
Aditya Birla Re	1361.1	5.56%	1096693
Action Const	909.35	5.02%	1521081
Afcons Infra	324.90	4.59%	522555
Aegis Logistics	632.45	4.43%	3724648
Adani Green Ene	1,085.35	3.91%	7332072

Losers

Company Name	Last Price	% Loss	Volume
Birlasoft	366.00	-1.97%	1131546
ACME Solar	268.65	-1.63%	864141
Balrampur Chini	473.50	-0.88%	546137
Apollo Tyres	438.15	-0.50%	1051740
Aditya Infotech	1,894.40	-0.49%	83529
Bharti Hexacom	1523.7	-0.45%	69659
Avenue Supermar	4400.6	-0.34%	441816



Nifty Daily chart with RSI indicator



BankNifty Daily chart with RSI indicator

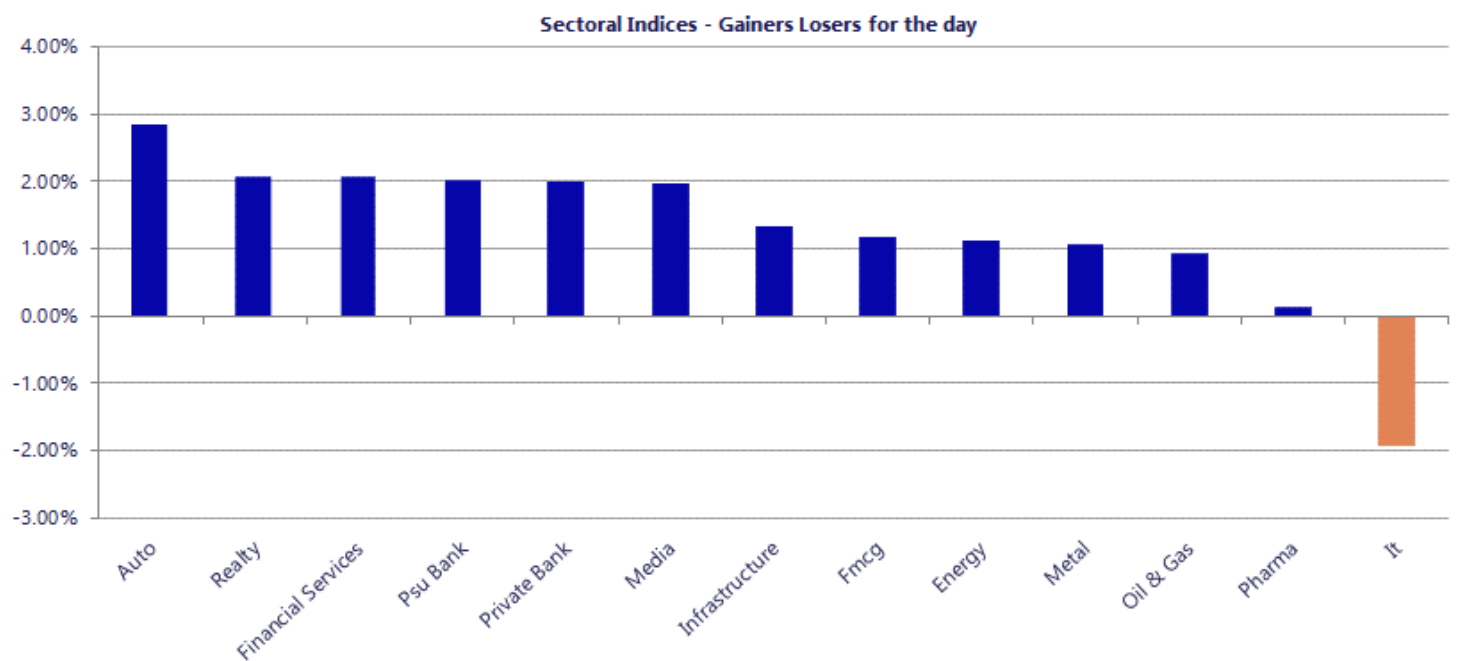


Breakouts - Cross above 200 DMA			
Company Name	LCP	Change %	200 DMA
Hind Rectifiers	840.4	11.29	755.17
India Tourism D	610.4	8.81	560.97
Asian Granito	69.53	7.68	64.57
SecMark Consult	130.82	7.20	122.03
Ganesh Benzo	92.23	7.12	86.1
D.K. Enterprise	76.8	6.03	72.43
Shree Rama News	33.49	5.78	31.66
NR Agarwal	446.55	5.65	422.67
Ruby Mills	233.08	5.37	221.2
ANDHRSUGAR	80.42	5.14	76.49
Xpro India	1112.5	4.99	1059.66
Arrow Greentech	569.5	4.80	543.41
IG Petro	424	3.88	408.15
ABS Marine	200.3	3.84	192.9
Carraro India L	507	3.62	489.27
Shah Alloys	68.28	3.53	65.95
RSWM	157.04	3.36	151.94
Flair Writing	316.45	3.04	307.1

* Stocks crossing above its Simple Moving Average (200DMA)

Breakdown - Cross below 200 DMA			
Company Name	LCP	Change %	200 DMA
DUGLOBAL	37.5	-3.13	38.71
Sun Pharma	1654.9	-2.49	1697.15
Pansari Develop	273	-0.73	275.02
DB (Int) Stock	26	-0.50	26.13
Premium Plast	35.65	-0.25	35.74

* Stocks crossing below its Simple Moving Average (200DMA)



Nifty 50 Stocks - Summary Details											
Symbol	LTP	Chng	% Chng	Volume (lacs)	Turnover (crs.)	52w High	Diff with 52w H	52w Low	Diff with 52w L	365 days % chng	30 days % chng
NIFTY 50	24050.60	275.50	1.16%	4812.35	40104	26373	8.81%	22183	8.42%	-0.87%	7.37%
ADANIENT	2087.20	46.70	2.29%	17.00	353	2617	20.23%	1753	19.06%	4.54%	-3.89%
ADANIPTS	1474.10	26.70	1.84%	40.27	589	1584	6.94%	1112	32.56%	3.51%	30.24%
APOLLOHOSP	7519.50	38.00	0.51%	4.37	329	8100	7.16%	6665	12.82%	-3.63%	10.03%
ASIANPAINT	2356.00	86.40	3.81%	30.18	710	2986	21.09%	2115	11.39%	3.32%	-2.29%
AXISBANK	1351.10	32.60	2.47%	67.56	912	1418	4.74%	1043	29.60%	2.77%	27.26%
BAJAJ-AUTO	9830.50	313.50	3.29%	7.39	719	10187	3.50%	7461	31.77%	2.29%	29.82%
BAJAJFINSV	1809.50	41.80	2.36%	9.83	177	2195	17.56%	1597	13.31%	-3.12%	-4.55%
BAJFINANCE	922.00	18.75	2.08%	94.91	874	1103	16.37%	788	17.02%	-1.89%	5.54%
BEL	442.30	2.55	0.58%	108.31	480	473	6.58%	277	59.91%	-4.54%	57.88%
BHARTIARTL	1867.00	7.60	0.41%	58.58	1094	2175	14.14%	1712	9.08%	0.90%	8.83%
CIPLA	1230.80	6.40	0.52%	20.86	257	1673	26.43%	1166	5.58%	-7.70%	-13.05%
COALINDIA	435.30	-18.80	-4.14%	296.02	1302	476	8.55%	369	18.08%	-1.86%	16.20%
DRREDDY	1229.70	17.80	1.47%	19.31	237	1380	10.87%	1062	15.83%	-6.46%	12.40%
EICHERMOT	7415.50	268.00	3.75%	7.05	519	8230	9.90%	5182	43.09%	-1.61%	41.02%
ETERNAL	240.48	2.59	1.09%	401.79	964	368	34.73%	210	14.59%	6.12%	13.76%
GRASIM	2756.70	16.20	0.59%	6.11	168	2979	7.46%	2503	10.16%	0.47%	7.78%
HCLTECH	1451.00	-13.90	-0.95%	34.50	496	1780	18.49%	1298	11.81%	6.57%	5.14%
HDFCBANK	810.10	12.40	1.55%	381.52	3087	1021	20.62%	727	11.48%	-4.63%	-8.20%
HDFCLIFE	604.50	13.30	2.25%	43.86	263	821	26.35%	555	8.90%	-7.86%	-11.73%
HINDALCO	990.00	4.35	0.44%	60.13	594	1030	3.86%	552	79.28%	3.49%	75.53%
HINDUNILVR	2166.10	32.90	1.54%	21.44	462	2750	21.23%	2023	7.10%	-1.10%	-7.83%
ICICIBANK	1322.80	41.50	3.24%	181.75	2394	1500	11.81%	1188	11.38%	0.83%	1.69%
INDIGO	4569.30	120.20	2.70%	12.96	586	6233	26.69%	3895	17.31%	4.31%	-12.02%
INFY	1291.40	-40.20	-3.02%	192.28	2486	1728	25.27%	1215	6.28%	-0.32%	-8.00%
ITC	304.15	1.15	0.38%	177.44	540	444	31.53%	287	5.98%	-1.59%	-26.94%
JIOFIN	243.48	4.64	1.94%	120.31	292	339	28.09%	218	11.56%	3.17%	10.21%
JSWSTEEL	1212.00	2.30	0.19%	17.20	209	1285	5.66%	935	29.63%	-0.19%	28.18%
KOTAKBANK	375.00	3.10	0.83%	237.52	893	460	18.55%	346	8.54%	-4.30%	-8.66%
LT	3961.00	64.80	1.66%	28.21	1114	4440	10.79%	3048	29.95%	2.19%	29.69%
M&M	3266.00	99.20	3.13%	28.01	909	3840	14.95%	2516	29.81%	-0.84%	29.44%
MARUTI	13689.00	100.00	0.74%	4.72	647	17370	21.19%	11289	21.26%	-1.28%	19.48%
MAXHEALTH	957.00	2.05	0.21%	40.11	381	1314	27.19%	903	5.98%	-8.25%	-14.79%
NESTLEIND	1250.00	21.30	1.73%	13.58	169	1340	6.74%	1085	15.24%	0.71%	6.62%
NTPC	380.15	1.50	0.40%	149.53	566	395	3.64%	316	20.47%	0.76%	8.82%
ONGC	286.70	-1.90	-0.66%	128.87	371	293	2.15%	220	30.16%	6.50%	29.18%
POWERGRID	301.60	3.50	1.17%	132.45	400	322	6.34%	250	20.64%	0.99%	2.79%
RELIANCE	1350.00	20.00	1.50%	193.62	2608	1612	16.24%	1168	15.58%	-4.17%	13.89%
SBILIFE	1920.10	16.10	0.85%	7.64	148	2132	9.94%	1475	30.18%	-2.22%	29.59%
SBIN	1066.00	25.05	2.41%	178.60	1893	1235	13.66%	741	43.86%	-4.15%	43.63%
SHRIRAMFIN	1026.55	30.25	3.04%	80.48	824	1108	7.35%	567	81.21%	-3.42%	64.37%
SUNPHARMA	1655.00	-62.10	-3.62%	80.89	1336	1851	10.60%	1548	6.91%	-8.70%	0.17%
TATACONSUM	1093.80	15.80	1.47%	15.80	172	1221	10.41%	1007	8.60%	-0.52%	0.37%
TATASTEEL	206.85	1.65	0.80%	283.84	586	216	4.44%	125	65.08%	6.08%	62.64%
TCS	2523.00	-66.00	-2.55%	104.78	2643	3631	30.51%	2346	7.54%	0.39%	-22.29%
TECHM	1438.90	-22.70	-1.55%	20.45	294	1854	22.39%	1264	13.81%	7.65%	13.05%
TITAN	4496.50	56.70	1.28%	15.65	700	4524	0.61%	3091	45.48%	6.55%	41.66%
TMPV	343.00	9.75	2.93%	106.64	362	744	53.90%	294	16.55%	-0.64%	-41.16%
TRENT	3927.00	76.30	1.98%	11.86	465	6261	37.28%	3276	19.89%	5.70%	-15.00%
ULTRACEMCO	11608.00	160.00	1.40%	4.20	487	13110	11.46%	10325	12.43%	-0.39%	1.85%
WIPRO	204.60	1.73	0.85%	511.97	1045	273	25.08%	187	9.71%	1.83%	-13.54%

Disclaimer / Disclosures

ANALYST CERTIFICATION

I, Mrs. Vaishali Parekh B.com, Research Analyst, author and the name subscribed to this report, hereby certify that all of the views expressed in this research report accurately reflect our views about the subject issuer(s) or securities. We also certify that no part of our compensation was, is, or will be directly or indirectly related to the specific recommendation(s) or view(s) in this report.

Terms & conditions and other disclosures:

Prabhudas Lilladher Pvt. Ltd, Mumbai, India (hereinafter referred to as "PL") is engaged in the business of Stock Broking, Portfolio Manager, Depository Participant and distribution for third party financial products. PL is a subsidiary of Prabhudas Lilladher Advisory Services Pvt Ltd. which has its various subsidiaries engaged in business of commodity broking, investment banking, financial services (margin funding) and distribution of third party financial/other products, details in respect of which are available at www.plindia.com

This document has been prepared by the Research Division of PL and is meant for use by the recipient only as information and is not for circulation. This document is not to be reported or copied or made available to others without prior permission of PL. It should not be considered or taken as an offer to sell or a solicitation to buy or sell any security.

The information contained in this report has been obtained from sources that are considered to be reliable. However, PL has not independently verified the accuracy or completeness of the same. Neither PL nor any of its affiliates, its directors or its employees accepts any responsibility of whatsoever nature for the information, statements and opinion given, made available or expressed herein or for any omission therein.

Recipients of this report should be aware that past performance is not necessarily a guide to future performance and value of investments can go down as well. The suitability or otherwise of any investments will depend upon the recipient's particular circumstances and, in case of doubt, advice should be sought from an independent expert/advisor.

Either PL or its affiliates or its directors or its employees or its representatives or its clients or their relatives may have position(s), make market, act as principal or engage in transactions of securities of companies referred to in this report and they may have used the research material prior to publication.

PL may from time to time solicit or perform investment banking or other services for any company mentioned in this document.

PL is registered as Research Analyst under Securities and Exchange Board of India (Research Analysts) Regulations, 2014 PL submits that no material disciplinary action has been taken on us by any Regulatory Authority impacting Equity Research Analysis activities.

PL or its research analysts or its associates or his relatives do not have any financial interest in the subject company.

PL or its research analysts or its associates or his relatives do not have actual/beneficial ownership of one per cent or more securities of the subject company at the end of the month immediately preceding the date of publication of the research report.

PL or its research analysts or its associates or his relatives do not have any material conflict of interest at the time of publication of the research report.

PL or its associates might have received compensation from the subject company in the past twelve months.

PL or its associates might have managed or co-managed public offering of securities for the subject company in the past twelve months or mandated by the subject company for any other assignment in the past twelve months.

PL or its associates might have received any compensation for investment banking or merchant banking or brokerage services from the subject company in the past twelve months.

PL or its associates might have received any compensation for products or services other than investment banking or merchant banking or brokerage services from the subject company in the past twelve months PL or its associates might have received any compensation or other benefits from the subject company or third party in connection with the research report.

PL encourages independence in research report preparation and strives to minimize conflict in preparation of research report. PL or its analysts did not receive any compensation or other benefits from the subject Company or third party in connection with the preparation of the research report. PL or its Research Analysts do not have any material conflict of interest at the time of publication of this report.

It is confirmed that Mrs. Vaishali Parekh B.com, Research Analyst of this report has not received any compensation from the companies mentioned in the report in the preceding twelve months compensation of our Research Analysts is not based on any specific merchant banking, investment banking or brokerage service transactions.

The Research analysts for this report certifies that all of the views expressed in this report accurately reflect his or her personal views about the subject company or companies and its or their securities, and no part of his or her compensation was, is or will be, directly or indirectly related to specific recommendations or views expressed in this report.

The research analysts for this report has not served as an officer, director or employee of the subject company PL or its research analysts have not engaged in market making activity for the subject company

Our sales people, traders, and other professionals or affiliates may provide oral or written market commentary or trading strategies to our clients that reflect opinions that are contrary to the opinions expressed herein, and our proprietary trading and investing businesses may make investment decisions that are inconsistent with the recommendations expressed herein. In reviewing these materials, you should be aware that any or all of the foregoing, among other things, may give rise to real or potential conflicts of interest.

PL and its associates, their directors and employees may (a) from time to time, have a long or short position in, and buy or sell the securities of the subject company or (b) be engaged in any other transaction involving such securities and earn brokerage or other compensation or act as a market maker in the financial instruments of the subject company or act as an advisor or lender/borrower to the subject company or may have any other potential conflict of interests with respect to any recommendation and other related information and opinions.

Regd. Office: 3rd Floor, Sadhana House, 570, P. B. Marg, Behind Mahindra Tower, Worli, Mumbai - 400 018, India.