

\* Sensex 76847.57 -702.68

\* Nifty 23842.65 -207.95

\* Bank Nifty 55605.05 -307.70

## Market Preview

### Nifty bias turns weak

Nifty opened on a negative note with a huge gap down near 23600 level with the bias and sentiment once again getting worse and can expect for further downward movement in the coming sessions. BankNifty opened near the 54600 zone with sentiment turning very cautious once again as peace talks failed between the US-Iran escalations. The market breadth was weak with the advance decline indicating a ratio of 1:2 at close.

## Market Forecast

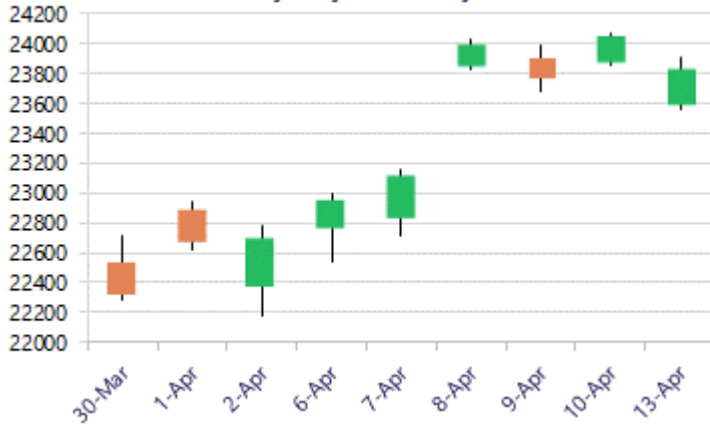
### Nifty daily range 23500 - 24100

Nifty witnessed a big gap down opening on the back of weak cues, once again triggering the sentiment to get tense with negotiations between US-Iran failing and with the index precariously positioned having the tough resistance near the 24000 zone. The index witnessed a revival during the session to end near the 23840 level but opening the downside threat once again with 23000 and 22150 zone positioned as the important and crucial support as of now.

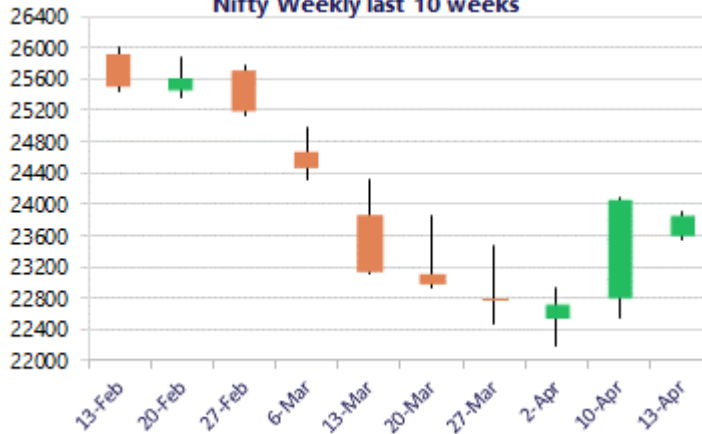
BankNifty opened on a weak note near 54600 level with sentiment once again getting worse, but a temporary recovery witnessed helped the index to close near the 55600 level with bias turning weak and the possibility of further slide anticipated in the coming sessions. As mentioned earlier, the index would have the important resistance zone near the 57000 level which needs to be breached above decisively while at the same time would need to sustain the 53500-level positioned as the important near-term support zone from current rate.

The support for the day is seen at 23500 levels, while the resistance is seen at 24100 levels. BankNifty would have the daily range of 54400-56200 levels.

Nifty daily last 10 days



Nifty Weekly last 10 weeks

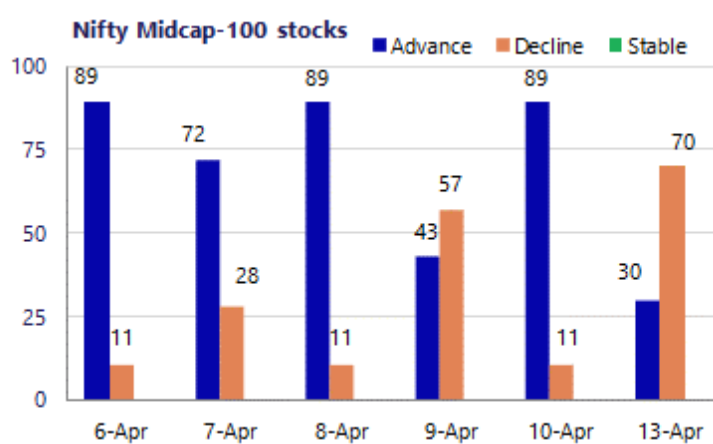
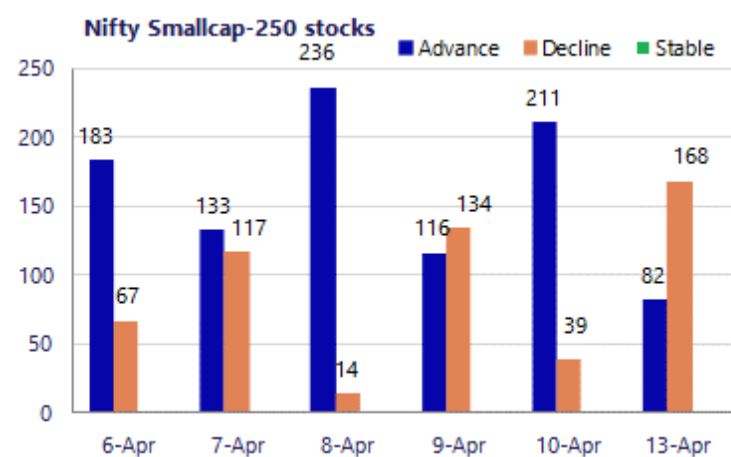


\*Blue candle → Close rate > Open rate \* Red candle → Close rate < Open rate

Sensex	Period	Closing	% Chng	Trend	Reversal	2 Sup	1 Sup	Pivot	1 Res	2 Res
Nifty	Daily	23842.65	-0.86%	8	23485.60	23417	23630	23769	23982	24120
	Weekly	24050.60	5.89%	1	22578.10	22025	23038	23556	24569	25087
	Monthly	22331.40	-11.31%	-3	26623.20	20499	21415	23202	24118	25905
Bank Nifty	Daily	55605.05	-0.55%	8	53982.40	53842	54723	55238	56120	56634
	Weekly	55912.75	8.47%	1	53295.70	49467	52690	54334	57557	59202
	Monthly	50275.35	-16.94%	-1	64512.75	43464	46870	53524	56929	63583
Sensex	Daily	76847.57	-0.91%	8	75729.50	75398	76123	76593	77318	77788
	Weekly	77550.25	5.77%	1	72197.45	71065	74307	75971	79214	80878
	Monthly	71947.55	-11.49%	-3	85936.10	66196	69072	74852	77728	83509

**Gainers - Losers ( Nifty 500 Stocks )**

Gainers				Losers			
Company Name	Last Price	% Gain	Volume	Company Name	Last Price	% Loss	Volume
New India Assur	171.67	10.25%	164.61	Jyoti CNC Auto	698.95	-14.68%	705.31
OneSource Spec	1,545.10	7.38%	1505.52	Ola Electric	38.27	-6.38%	38.42
NTPC Green Ener	104.23	7.27%	103.93	Afcons Infra	306.40	-5.69%	311.32
Tata Inv Corp	713.20	7.14%	711.12	Cohance Life	358.60	-5.11%	361.2
Thermax	3,870.80	6.25%	3806.73	Eicher Motors	7,050.00	-5.04%	7104.18
ACME Solar	284.05	5.73%	283.33	Asahi India	828	-4.81%	831.88
Zydus Wellness	517.80	5.73%	532.63	Chola Invest.	1507.2	-4.68%	1520.06



### Nifty Daily chart with RSI indicator



### BankNifty Daily chart with RSI indicator

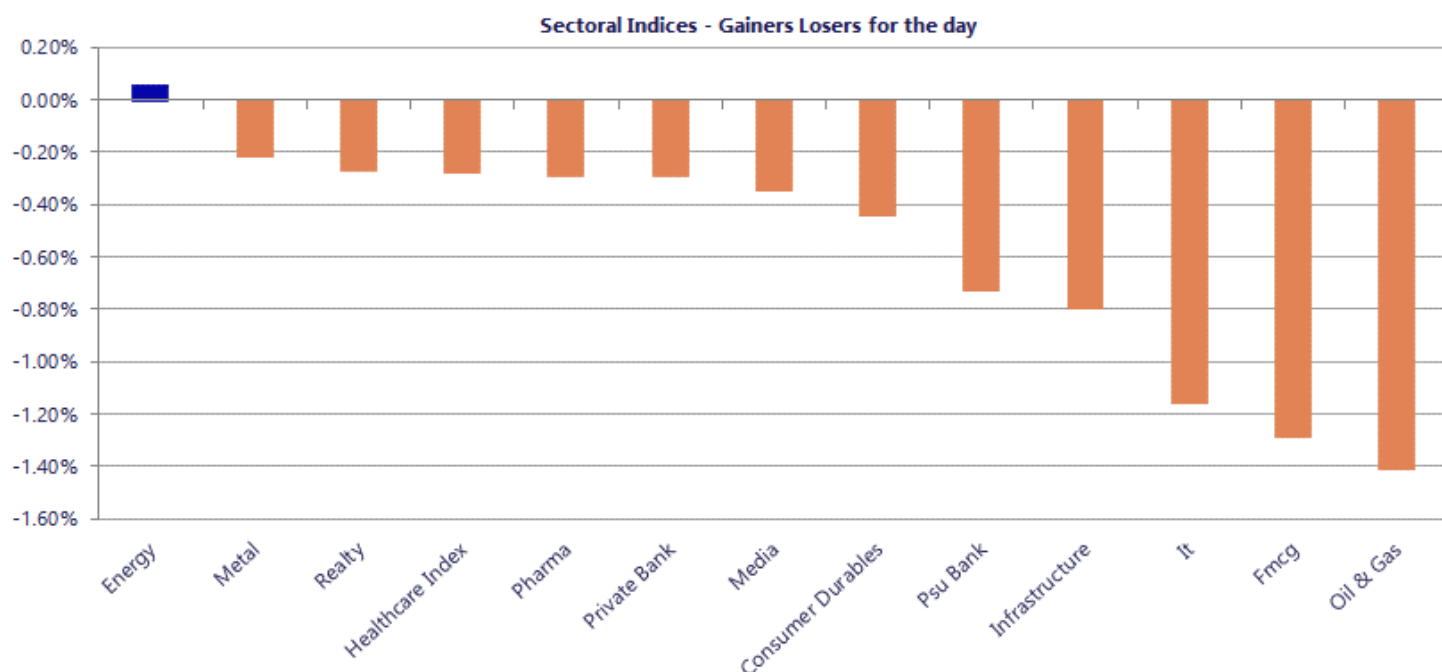


Breakouts - Cross above 200 DMA			
Company Name	LCP	Change %	200 DMA
NTPC Green Ener	104.23	6.38	97.98
Supreme Power	203.85	5.53	193.16
Kirl Electric	115.36	5.43	109.42
Nath Bio-Genes	172.94	4.89	164.88
Ratnaveer Preci	157.15	4.84	149.9
HEC Infra Proje	138.96	3.05	134.85
DSP Priv Bank	28.59	2.03	28.02
Bharat Gears	105.26	1.77	103.43
JBM Auto	624.6	1.66	614.43
HOEC	158.19	1.64	155.64
DB (Int) Stock	26.51	1.53	26.11
SRM Contractors	500.15	1.37	493.37
Paras Defence	705.9	1.35	696.5
Wanbury	251.84	1.24	248.76
B&B Triplewall	191.74	1.23	189.41
Neogen	1388.4	1.22	1371.63
Iris Clothings	33.12	1.22	32.72
Master Compo.	345	1.11	341.21

\* Stocks crossing above its Simple Moving Average (200DMA)

Breakdown - Cross below 200 DMA			
Company Name	LCP	Change %	200 DMA
Ola Electric	38.27	-6.11	40.76
Eldeco Housing	796.25	-4.56	834.3
Essar Shipping	26.43	-4.20	27.59
Umiya Buildcon	82.05	-3.82	85.31
Yudiz Solutions	29.35	-3.74	30.49
Effwa Infra & R	214.2	-3.60	222.21
Regency Ceramic	44.3	-2.44	45.41
Lakshmi Prec	5.1	-1.92	5.2
Sundaram Fin	4803.5	-1.67	4885.23
Suven Life Sci	190.4	-1.65	193.59
Hero Motocorp	5247	-1.51	5327.31
RBM Infracon	413.1	-1.18	418.04
NRB Industrial	28.79	-1.10	29.11
Ipru Nifty Fin	30.79	-1.06	31.12
JK Tyre & Ind	420.1	-0.96	424.16
RSWM	150.55	-0.90	151.91
Cellecor	30.35	-0.85	30.61
Nipp Nifty Div	79.23	-0.76	79.84

\* Stocks crossing below its Simple Moving Average (200DMA)



Nifty 50 Stocks - Summary Details											
Symbol	LTP	Chng	% Chng	Volume (lacs)	Turnover (crs.)	52w High	Diff with 52w H	52w Low	Diff with 52w L	365 days % chng	30 days % chng
NIFTY 50	23842.65	-207.95	-0.86%	4888.45	41931	26373	9.60%	22183	7.48%	2.99%	4.44%
ADANIENT	2130.20	43.40	2.08%	37.30	789	2617	18.59%	1753	21.52%	8.62%	-5.48%
ADANIPTS	1465.10	-10.20	-0.69%	36.30	530	1584	7.51%	1148	27.62%	7.48%	25.81%
APOLLOHOSP	7516.50	5.00	0.07%	3.11	233	8100	7.20%	6678	12.56%	-0.51%	10.77%
ASIANPAINT	2348.00	-12.70	-0.54%	17.35	404	2986	21.36%	2115	11.02%	6.88%	-1.91%
AXISBANK	1352.80	2.00	0.15%	89.75	1208	1418	4.62%	1043	29.76%	12.99%	26.55%
BAJAJ-AUTO	9792.00	-21.50	-0.22%	3.64	356	10187	3.88%	7612	28.64%	10.33%	26.04%
BAJAJFINSV	1790.40	-18.80	-1.04%	12.43	221	2195	18.43%	1597	12.11%	3.01%	-8.01%
BAJFINANCE	897.05	-27.50	-2.97%	107.23	965	1103	18.63%	788	13.85%	4.91%	0.55%
BEL	442.50	0.05	0.01%	151.50	668	473	6.54%	283	56.55%	0.71%	55.26%
BHARTIARTL	1866.40	-3.60	-0.19%	103.72	1942	2175	14.17%	1732	7.74%	3.49%	6.25%
CIPLA	1211.80	-17.70	-1.44%	16.12	195	1673	27.57%	1166	3.95%	-7.83%	-17.17%
COALINDIA	435.50	1.40	0.32%	187.02	813	476	8.51%	369	18.13%	-6.75%	11.07%
DRREDDY	1234.30	2.10	0.17%	14.63	180	1380	10.54%	1102	11.98%	-4.49%	11.25%
EICHERMOT	7050.00	-374.00	-5.04%	12.47	886	8230	14.34%	5220	35.07%	4.58%	31.75%
ETERNAL	236.21	-4.02	-1.67%	443.43	1055	368	35.89%	213	11.11%	9.52%	8.75%
GRASIM	2716.00	-26.60	-0.97%	12.60	342	2979	8.83%	2503	8.53%	5.74%	2.44%
HCLTECH	1428.50	-22.70	-1.56%	22.53	322	1780	19.75%	1298	10.08%	7.78%	2.73%
HDFCBANK	793.00	-17.30	-2.14%	475.49	3768	1021	22.29%	727	9.13%	-2.94%	-12.22%
HDFCLIFE	620.55	16.40	2.71%	55.50	343	821	24.39%	555	11.79%	-0.83%	-9.48%
HINDALCO	976.20	-15.90	-1.60%	47.54	464	1030	5.20%	576	69.45%	7.27%	62.62%
HINDUNILVR	2121.00	-34.30	-1.59%	19.95	424	2750	22.87%	2023	4.87%	-1.81%	-10.36%
ICICIBANK	1347.00	25.10	1.90%	305.72	4084	1500	10.20%	1188	13.42%	7.35%	2.70%
INDIGO	4433.90	-120.30	-2.64%	16.63	735	6233	28.86%	3895	13.83%	6.63%	-13.92%
INFY	1276.00	-16.50	-1.28%	103.66	1321	1728	26.16%	1215	5.01%	2.22%	-9.47%
ITC	298.90	-5.35	-1.76%	165.22	495	444	32.71%	287	4.15%	-0.85%	-29.10%
JIOFIN	237.75	-5.45	-2.24%	153.86	365	339	29.78%	223	6.47%	1.06%	3.36%
JSWSTEEL	1203.00	-11.80	-0.97%	10.32	124	1285	6.36%	935	28.66%	7.48%	21.48%
KOTAKBANK	372.85	-1.70	-0.45%	300.27	1108	460	19.01%	346	7.92%	1.64%	-11.70%
LT	3953.00	-6.90	-0.17%	48.98	1925	4440	10.97%	3100	27.51%	14.95%	26.86%
M&M	3210.00	-49.80	-1.53%	31.83	1026	3840	16.40%	2532	26.77%	9.52%	24.40%
MARUTI	13076.00	-633.00	-4.62%	13.48	1769	17370	24.72%	11289	15.83%	3.85%	12.73%
MAXHEALTH	950.30	-3.05	-0.32%	23.82	227	1314	27.70%	903	5.24%	-4.01%	-12.76%
NESTLEIND	1226.20	-23.10	-1.85%	13.47	165	1340	8.52%	1085	13.05%	2.00%	3.85%
NTPC	386.15	6.00	1.58%	152.40	585	395	2.12%	316	22.37%	0.44%	7.23%
ONGC	287.05	0.55	0.19%	239.87	686	293	2.03%	225	27.44%	8.69%	24.60%
POWERGRID	300.20	-2.55	-0.84%	156.82	471	322	6.77%	250	20.08%	-0.25%	-1.28%
RELIANCE	1314.00	-36.20	-2.68%	287.53	3785	1612	18.48%	1195	9.94%	-4.83%	7.80%
SBILIFE	1916.00	-7.20	-0.37%	6.39	122	2132	10.13%	1500	27.73%	0.61%	25.90%
SBIN	1062.00	-4.70	-0.44%	177.63	1870	1235	13.99%	746	42.36%	1.43%	40.88%
SHRIRAMFIN	1007.00	-20.55	-2.00%	82.42	827	1108	9.12%	567	77.76%	0.34%	57.64%
SUNPHARMA	1653.60	-1.30	-0.08%	37.51	620	1851	10.67%	1548	6.82%	-8.21%	-2.01%
TATACONSUM	1090.00	-3.70	-0.34%	16.88	184	1221	10.72%	1007	8.22%	0.59%	-0.72%
TATASTEEL	206.10	-0.51	-0.25%	258.49	528	216	4.78%	130	57.94%	12.31%	54.47%
TCS	2470.70	-53.60	-2.12%	37.40	928	3631	31.95%	2346	5.31%	2.50%	-23.54%
TECHM	1438.00	-2.20	-0.15%	12.86	184	1854	22.44%	1274	12.86%	7.89%	12.15%
TITAN	4440.90	-64.10	-1.42%	8.50	379	4524	1.83%	3201	38.72%	9.03%	37.28%
TMPV	345.60	3.00	0.88%	131.13	449	744	53.55%	294	17.43%	10.03%	-41.92%
TRENT	3874.00	-42.50	-1.09%	4.26	165	6261	38.12%	3276	18.27%	11.07%	-18.96%
ULTRACEMCO	11509.00	-80.00	-0.69%	2.20	252	13110	12.21%	10325	11.47%	8.41%	0.06%
WIPRO	202.96	-1.92	-0.94%	219.31	443	273	25.68%	187	8.83%	2.72%	-15.35%

## Disclaimer / Disclosures

### ANALYST CERTIFICATION

I, Mrs. Vaishali Parekh B.com, Research Analyst, author and the name subscribed to this report, hereby certify that all of the views expressed in this research report accurately reflect our views about the subject issuer(s) or securities. We also certify that no part of our compensation was, is, or will be directly or indirectly related to the specific recommendation(s) or view(s) in this report.

Terms & conditions and other disclosures:

Prabhudas Lilladher Pvt. Ltd, Mumbai, India (hereinafter referred to as "PL") is engaged in the business of Stock Broking, Portfolio Manager, Depository Participant and distribution for third party financial products. PL is a subsidiary of Prabhudas Lilladher Advisory Services Pvt Ltd. which has its various subsidiaries engaged in business of commodity broking, investment banking, financial services (margin funding) and distribution of third party financial/other products, details in respect of which are available at [www.plindia.com](http://www.plindia.com)

This document has been prepared by the Research Division of PL and is meant for use by the recipient only as information and is not for circulation. This document is not to be reported or copied or made available to others without prior permission of PL. It should not be considered or taken as an offer to sell or a solicitation to buy or sell any security.

The information contained in this report has been obtained from sources that are considered to be reliable. However, PL has not independently verified the accuracy or completeness of the same. Neither PL nor any of its affiliates, its directors or its employees accepts any responsibility of whatsoever nature for the information, statements and opinion given, made available or expressed herein or for any omission therein.

Recipients of this report should be aware that past performance is not necessarily a guide to future performance and value of investments can go down as well. The suitability or otherwise of any investments will depend upon the recipient's particular circumstances and, in case of doubt, advice should be sought from an independent expert/advisor.

Either PL or its affiliates or its directors or its employees or its representatives or its clients or their relatives may have position(s), make market, act as principal or engage in transactions of securities of companies referred to in this report and they may have used the research material prior to publication.

PL may from time to time solicit or perform investment banking or other services for any company mentioned in this document.

PL is registered as Research Analyst under Securities and Exchange Board of India (Research Analysts) Regulations, 2014 PL submits that no material disciplinary action has been taken on us by any Regulatory Authority impacting Equity Research Analysis activities.

PL or its research analysts or its associates or his relatives do not have any financial interest in the subject company.

PL or its research analysts or its associates or his relatives do not have actual/beneficial ownership of one per cent or more securities of the subject company at the end of the month immediately preceding the date of publication of the research report.

PL or its research analysts or its associates or his relatives do not have any material conflict of interest at the time of publication of the research report.

PL or its associates might have received compensation from the subject company in the past twelve months.

PL or its associates might have managed or co-managed public offering of securities for the subject company in the past twelve months or mandated by the subject company for any other assignment in the past twelve months.

PL or its associates might have received any compensation for investment banking or merchant banking or brokerage services from the subject company in the past twelve months.

PL or its associates might have received any compensation for products or services other than investment banking or merchant banking or brokerage services from the subject company in the past twelve months PL or its associates might have received any compensation or other benefits from the subject company or third party in connection with the research report.

PL encourages independence in research report preparation and strives to minimize conflict in preparation of research report. PL or its analysts did not receive any compensation or other benefits from the subject Company or third party in connection with the preparation of the research report. PL or its Research Analysts do not have any material conflict of interest at the time of publication of this report.

It is confirmed that Mrs. Vaishali Parekh B.com, Research Analyst of this report has not received any compensation from the companies mentioned in the report in the preceding twelve months compensation of our Research Analysts is not based on any specific merchant banking, investment banking or brokerage service transactions.

The Research analysts for this report certifies that all of the views expressed in this report accurately reflect his or her personal views about the subject company or companies and its or their securities, and no part of his or her compensation was, is or will be, directly or indirectly related to specific recommendations or views expressed in this report.

The research analysts for this report has not served as an officer, director or employee of the subject company PL or its research analysts have not engaged in market making activity for the subject company

Our sales people, traders, and other professionals or affiliates may provide oral or written market commentary or trading strategies to our clients that reflect opinions that are contrary to the opinions expressed herein, and our proprietary trading and investing businesses may make investment decisions that are inconsistent with the recommendations expressed herein. In reviewing these materials, you should be aware that any or all of the foregoing, among other things, may give rise to real or potential conflicts of interest.

PL and its associates, their directors and employees may (a) from time to time, have a long or short position in, and buy or sell the securities of the subject company or (b) be engaged in any other transaction involving such securities and earn brokerage or other compensation or act as a market maker in the financial instruments of the subject company or act as an advisor or lender/borrower to the subject company or may have any other potential conflict of interests with respect to any recommendation and other related information and opinions.

**Regd. Office:** 3<sup>rd</sup> Floor, Sadhana House, 570, P. B. Marg, Behind Mahindra Tower, Worli, Mumbai - 400 018, India.