

* Sensex 78111.24 + 1263.67

* Nifty 24231.30 + 388.65

* Bank Nifty 56301.95 + 696.90

Market Preview

Nifty ends above 24200 zone

Nifty extended the gains further with a huge gap up opening to close above the 24200 levels with bias eased out to some extent but still not completely eradicated. BankNifty gained significantly to end near the 56300 zone above the 50EMA at 56200 zone to bring some relief but needs to sustain the current bias in the coming days. The market breadth was strong with the advance decline indicating a ratio of 6:1 at close.

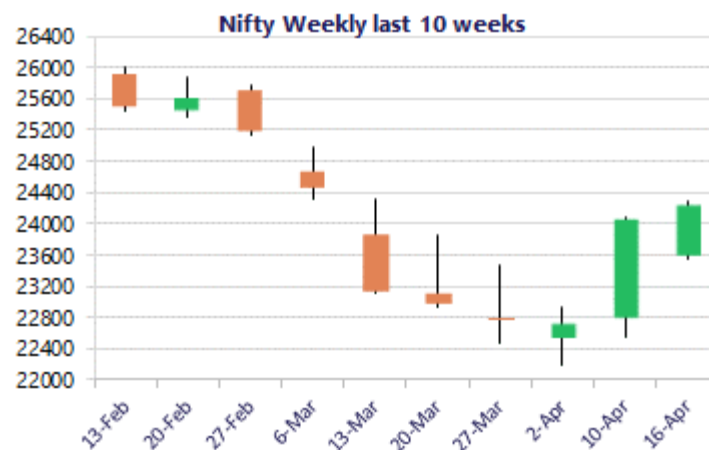
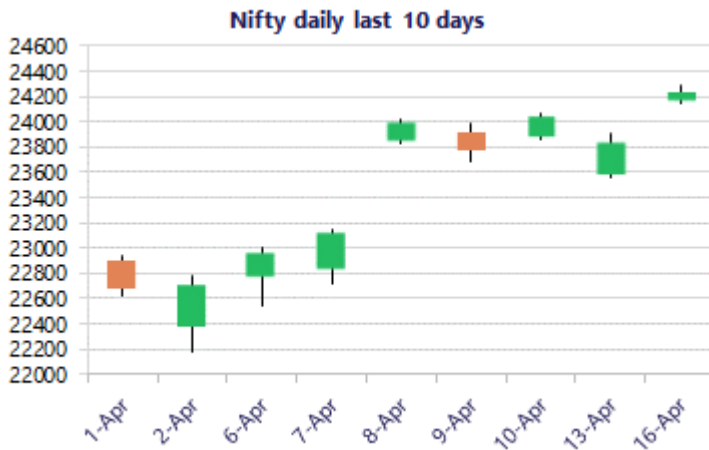
Market Forecast

Nifty daily range 24000 - 24400

Nifty witnessed a big gap up opening near the 24150 zone and moved past the important 50EMA at 24200 level to further improve the bias and ended the session on a positive note with 24300 zone as the important hurdle which needs to be breached decisively further to establish conviction and clarity in the coming days. The ongoing geopolitical tensions remain a cause of concern which has not been completely de-escalated, thereby volatility and fluctuations anticipated with 23000 and 22150 level continue to be positioned as the important and crucial support zone.

BankNifty opened on a positive note near the 56350 level above the important 50EMA of 56200 zone to ease out the sentiment to some extent and amid some volatility closed near the 56300 level with bias slowly and steadily improving. The sentiment still would be maintained with a cautious approach since the threat from the middle east geopolitical tensions is still not completely eradicated and hence, the index would need to sustain the 53500-level which is positioned as the important near-term support zone to maintain the bias intact.

The support for the day is seen at 24000 levels, while the resistance is seen at 24400 levels. BankNifty would have the daily range of 57300-55500 levels.

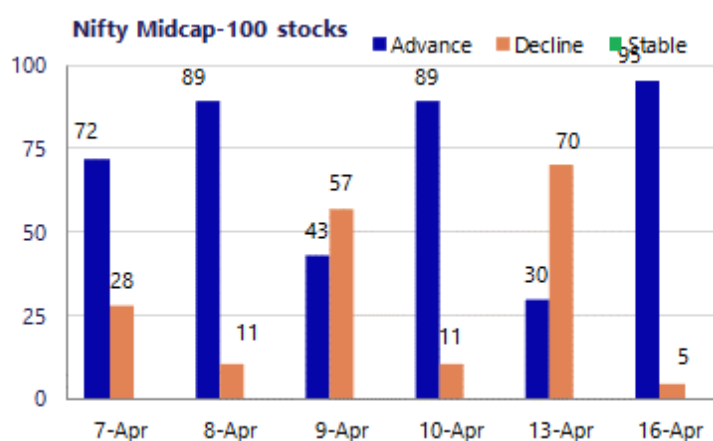
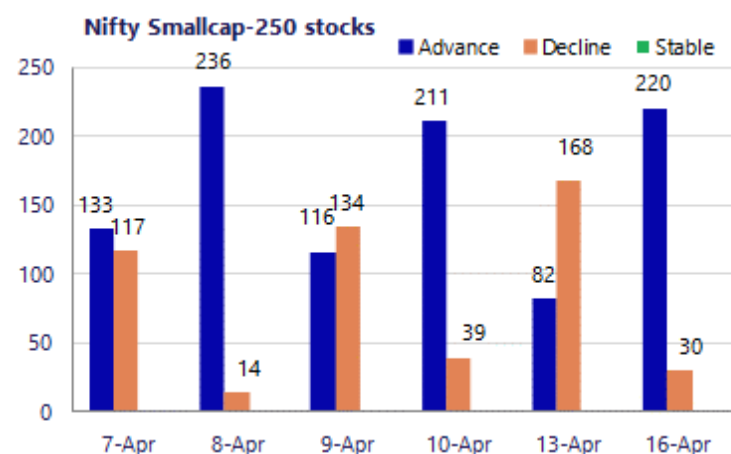


*Blue candle → Close rate > Open rate * Red candle → Close rate < Open rate

Sensex	Period	Closing	% Chng	Trend	Reversal	2 Sup	1 Sup	Pivot	1 Res	2 Res
Nifty	Daily	24231.30	1.63%	9	23758.40	24084	24158	24219	24293	24354
	Weekly	24050.60	5.89%	1	22578.10	22025	23038	23556	24569	25087
	Monthly	22331.40	-11.31%	-3	26623.20	20499	21415	23202	24118	25905
Bank Nifty	Daily	56301.95	1.25%	9	54893.50	55722	56012	56399	56689	57076
	Weekly	55912.75	8.47%	1	53295.70	49467	52690	54334	57557	59202
	Monthly	50275.35	-16.94%	-1	64512.75	43464	46870	53524	56929	63583
Sensex	Daily	78111.24	1.64%	9	76593.10	77656	77884	78077	78305	78498
	Weekly	77550.25	5.77%	1	72197.45	71065	74307	75971	79214	80878
	Monthly	71947.55	-11.49%	-3	85936.10	66196	69072	74852	77728	83509

Gainers - Losers (Nifty 500 Stocks)

Gainers				Losers			
Company Name	Last Price	% Gain	Volume	Company Name	Last Price	% Loss	Volume
Afcons Infra	337.45	10.13%	38762431	Acutaas Chem	2,291.70	-4.26%	718629
Billionbrains G	208.44	7.05%	131084471	Ather Energy	871.05	-4.05%	10059032
Aegis Logistics	658.8	6.61%	4077744	Brigade Ent	739.00	-0.85%	1554052
Angel One	297.76	6.17%	21047985	Bharti Airtel	1,855.70	-0.81%	11047510
Aditya Infotech	2,066.90	5.77%	543484	Ajanta Pharma	2,883.20	-0.49%	81678
BEML	1,711.60	5.45%	465804	Adani Energy	1171.15	-0.35%	2053037
Bajaj Housing	89.00	4.67%	9259446	AFFLE 3I	1418.9	-0.08%	269332



Nifty Daily chart with RSI indicator



BankNifty Daily chart with RSI indicator



Breakouts - Cross above 200 DMA

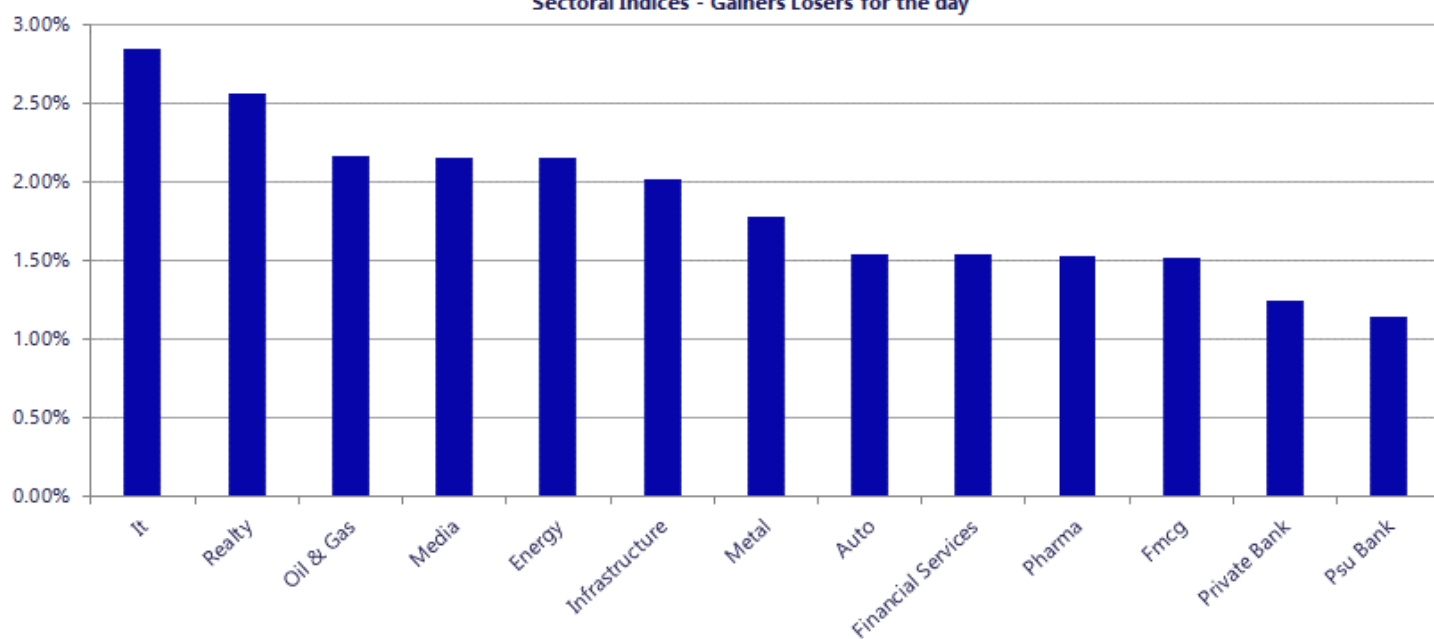
Company Name	LCP	Change %	200 DMA
Carraro India L	586	19.56	490.15
Hind Composites	491.8	10.33	445.75
Orient Bell	319	10.33	289.14
NINtec SYSTEMS	441.15	9.41	403.22
Goldiam Inter	383.5	7.91	355.4
Jaiprakash Pow	18.85	6.20	17.75
Menon Bearings	127.71	6.07	120.4
RBZ Jewellers	146.09	5.89	137.97
Indo Tech Trans	1716.9	5.74	1623.66
Mitcon Cons	71.41	5.20	67.88
Sutlej Textiles	36.39	4.84	34.71
Zenithexpo	239.15	4.62	228.59
Walchandnagar	188.82	4.42	180.82
Intense Tech	110.69	4.28	106.15
Banka Biolo	76.18	4.23	73.09
Marco Cables &	40.15	4.20	38.53
Umiya Buildcon	88.7	3.89	85.38
Vaswani Ind	57.85	3.66	55.81

Breakdown - Cross below 200 DMA

Company Name	LCP	Change %	200 DMA
DSP Priv Bank	27.37	-2.32	28.02
Vipul	10.12	-1.75	10.3
Ashapura Logist	67.45	-0.50	67.79
ABS Marine	192.6	-0.24	193.07
Archean Chem	608.1	-0.09	608.64

* Stocks crossing above its Simple Moving Average (200DMA)

* Stocks crossing below its Simple Moving Average (200DMA)

Sectoral Indices - Gainers Losers for the day


Nifty 50 Stocks - Summary Details											
Symbol	LTP	Chng	% Chng	Volume (lacs)	Turnover (crs.)	52w High	Diff with 52w H	52w Low	Diff with 52w L	365 days % chng	30 days % chng
NIFTY 50	24231.30	388.65	1.63%	4602.71	38371	26373	8.12%	22183	9.24%	4.67%	3.87%
ADANIENT	2138.00	9.00	0.42%	17.79	386	2617	18.29%	1753	21.96%	9.02%	-8.93%
ADANIPTS	1508.00	42.70	2.91%	44.15	665	1584	4.80%	1179	27.91%	10.62%	24.55%
APOLLOHOSP	7619.50	103.00	1.37%	4.65	354	8100	5.93%	6678	14.11%	0.92%	10.35%
ASIANPAINT	2420.70	68.30	2.90%	11.82	285	2986	18.92%	2115	14.45%	10.19%	0.21%
AXISBANK	1351.50	-2.10	-0.16%	67.90	923	1418	4.71%	1043	29.64%	12.88%	21.45%
BAJAJ-AUTO	9865.00	49.00	0.50%	5.52	546	10187	3.16%	7612	29.60%	11.15%	23.38%
BAJAJFINSV	1829.00	40.70	2.28%	10.66	194	2195	16.67%	1597	14.53%	5.24%	-7.06%
BAJFINANCE	912.70	13.75	1.53%	59.74	548	1103	17.22%	788	15.84%	6.74%	-0.15%
BEL	447.30	5.75	1.30%	99.15	444	473	5.52%	288	55.56%	1.80%	52.30%
BHARTIARTL	1857.50	-13.40	-0.72%	110.48	2059	2175	14.58%	1747	6.33%	3.00%	3.26%
CIPLA	1227.00	15.90	1.31%	12.98	159	1673	26.66%	1166	5.26%	-6.67%	-17.20%
COALINDIA	435.90	0.80	0.18%	101.48	441	476	8.42%	369	18.24%	-6.66%	10.28%
DRREDDY	1220.70	-15.20	-1.23%	46.93	569	1380	11.52%	1129	8.12%	-5.54%	5.70%
EICHERMOT	7118.00	68.00	0.96%	9.13	650	8230	13.51%	5220	36.37%	5.59%	28.74%
ETERNAL	246.01	9.79	4.14%	560.71	1374	368	33.23%	213	15.71%	14.06%	10.70%
GRASIM	2733.10	20.10	0.74%	6.66	183	2979	8.25%	2503	9.21%	6.40%	0.53%
HCLTECH	1450.30	20.90	1.46%	39.94	579	1780	18.53%	1298	11.76%	9.42%	1.67%
HDFCBANK	810.00	15.30	1.93%	397.66	3220	1021	20.63%	727	11.47%	-0.86%	-13.13%
HDFCLIFE	640.00	20.90	3.38%	57.37	366	821	22.02%	555	15.29%	2.28%	-9.18%
HINDALCO	1009.00	30.75	3.14%	110.75	1123	1038	2.79%	602	67.61%	10.87%	63.37%
HINDUNILVR	2152.00	24.80	1.17%	15.53	335	2750	21.75%	2023	6.40%	-0.37%	-8.87%
ICICIBANK	1347.00	-4.10	-0.30%	238.27	3213	1500	10.20%	1188	13.42%	7.35%	-0.24%
INDIGO	4620.00	192.80	4.35%	16.23	752	6233	25.87%	3895	18.61%	11.11%	-12.10%
INFY	1305.00	28.20	2.21%	120.98	1582	1728	24.48%	1215	7.40%	4.54%	-8.49%
ITC	302.20	3.55	1.19%	186.98	565	444	31.97%	287	5.30%	0.25%	-28.12%
JIOFIN	242.60	4.92	2.07%	204.67	497	339	28.35%	223	8.64%	3.12%	1.69%
JSWSTEEL	1218.50	14.30	1.19%	14.04	171	1285	5.15%	935	30.32%	8.86%	20.88%
KOTAKBANK	382.35	10.45	2.81%	191.00	726	460	16.95%	346	10.67%	4.23%	-9.83%
LT	4073.00	118.70	3.00%	45.61	1861	4440	8.27%	3162	28.79%	18.44%	25.03%
M&M	3259.00	38.80	1.20%	25.91	846	3840	15.13%	2602	25.23%	11.19%	23.17%
MARUTI	13289.00	213.00	1.63%	6.99	932	17370	23.49%	11289	17.72%	5.54%	12.10%
MAXHEALTH	990.35	38.65	4.06%	27.59	271	1314	24.65%	903	9.67%	0.04%	-7.80%
NESTLEIND	1256.90	30.80	2.51%	12.36	155	1340	6.23%	1085	15.88%	4.55%	6.16%
NTPC	392.00	5.75	1.49%	77.22	302	395	0.63%	316	24.23%	1.96%	8.14%
ONGC	287.50	-0.05	-0.02%	165.27	475	293	1.88%	228	25.85%	8.86%	23.55%
POWERGRID	313.00	12.65	4.21%	218.87	678	322	2.80%	250	25.20%	4.00%	2.77%
RELIANCE	1342.90	27.80	2.11%	153.05	2051	1612	16.68%	1228	9.39%	-2.74%	8.29%
SBILIFE	1972.00	57.60	3.01%	13.41	263	2132	7.50%	1525	29.31%	3.55%	26.20%
SBIN	1070.90	7.35	0.69%	161.94	1740	1235	13.27%	756	41.75%	2.28%	40.26%
SHRIRAMFIN	1020.00	15.90	1.58%	78.68	810	1108	7.94%	567	80.05%	1.63%	51.79%
SUNPHARMA	1694.00	41.80	2.53%	37.60	632	1851	8.49%	1548	9.43%	-5.97%	-0.65%
TATACONSUM	1092.00	1.70	0.16%	13.85	152	1221	10.56%	1007	8.42%	0.78%	-1.03%
TATASTEEL	208.19	1.80	0.87%	308.56	645	216	3.82%	134	55.71%	13.45%	52.62%
TCS	2552.80	80.20	3.24%	52.60	1337	3631	29.68%	2346	8.81%	5.90%	-21.41%
TECHM	1482.00	46.60	3.25%	16.79	247	1854	20.06%	1276	16.15%	11.19%	13.85%
TITAN	4527.50	88.20	1.99%	9.18	414	4534	0.14%	3211	40.99%	11.15%	38.31%
TMPV	356.00	10.50	3.04%	124.93	446	744	52.15%	294	20.97%	13.34%	-42.78%
TRENT	3973.20	97.80	2.52%	7.53	299	6261	36.54%	3276	21.30%	13.92%	-18.53%
ULTRACEMCO	11711.00	209.00	1.82%	2.75	324	13110	10.67%	10325	13.42%	10.31%	-0.07%
WIPRO	210.00	7.03	3.46%	278.86	581	273	23.11%	187	12.60%	6.29%	-13.93%

Disclaimer / Disclosures

ANALYST CERTIFICATION

I, Mrs. Vaishali Parekh B.com, Research Analyst, author and the name subscribed to this report, hereby certify that all of the views expressed in this research report accurately reflect our views about the subject issuer(s) or securities. We also certify that no part of our compensation was, is, or will be directly or indirectly related to the specific recommendation(s) or view(s) in this report.

Terms & conditions and other disclosures:

Prabhudas Lilladher Pvt. Ltd, Mumbai, India (hereinafter referred to as "PL") is engaged in the business of Stock Broking, Portfolio Manager, Depository Participant and distribution for third party financial products. PL is a subsidiary of Prabhudas Lilladher Advisory Services Pvt Ltd. which has its various subsidiaries engaged in business of commodity broking, investment banking, financial services (margin funding) and distribution of third party financial/other products, details in respect of which are available at www.plindia.com

This document has been prepared by the Research Division of PL and is meant for use by the recipient only as information and is not for circulation. This document is not to be reported or copied or made available to others without prior permission of PL. It should not be considered or taken as an offer to sell or a solicitation to buy or sell any security.

The information contained in this report has been obtained from sources that are considered to be reliable. However, PL has not independently verified the accuracy or completeness of the same. Neither PL nor any of its affiliates, its directors or its employees accepts any responsibility of whatsoever nature for the information, statements and opinion given, made available or expressed herein or for any omission therein.

Recipients of this report should be aware that past performance is not necessarily a guide to future performance and value of investments can go down as well. The suitability or otherwise of any investments will depend upon the recipient's particular circumstances and, in case of doubt, advice should be sought from an independent expert/advisor.

Either PL or its affiliates or its directors or its employees or its representatives or its clients or their relatives may have position(s), make market, act as principal or engage in transactions of securities of companies referred to in this report and they may have used the research material prior to publication.

PL may from time to time solicit or perform investment banking or other services for any company mentioned in this document.

PL is registered as Research Analyst under Securities and Exchange Board of India (Research Analysts) Regulations, 2014 PL submits that no material disciplinary action has been taken on us by any Regulatory Authority impacting Equity Research Analysis activities.

PL or its research analysts or its associates or his relatives do not have any financial interest in the subject company.

PL or its research analysts or its associates or his relatives do not have actual/beneficial ownership of one per cent or more securities of the subject company at the end of the month immediately preceding the date of publication of the research report.

PL or its research analysts or its associates or his relatives do not have any material conflict of interest at the time of publication of the research report.

PL or its associates might have received compensation from the subject company in the past twelve months.

PL or its associates might have managed or co-managed public offering of securities for the subject company in the past twelve months or mandated by the subject company for any other assignment in the past twelve months.

PL or its associates might have received any compensation for investment banking or merchant banking or brokerage services from the subject company in the past twelve months.

PL or its associates might have received any compensation for products or services other than investment banking or merchant banking or brokerage services from the subject company in the past twelve months PL or its associates might have received any compensation or other benefits from the subject company or third party in connection with the research report.

PL encourages independence in research report preparation and strives to minimize conflict in preparation of research report. PL or its analysts did not receive any compensation or other benefits from the subject Company or third party in connection with the preparation of the research report. PL or its Research Analysts do not have any material conflict of interest at the time of publication of this report.

It is confirmed that Mrs. Vaishali Parekh B.com, Research Analyst of this report has not received any compensation from the companies mentioned in the report in the preceding twelve months compensation of our Research Analysts is not based on any specific merchant banking, investment banking or brokerage service transactions.

The Research analysts for this report certifies that all of the views expressed in this report accurately reflect his or her personal views about the subject company or companies and its or their securities, and no part of his or her compensation was, is or will be, directly or indirectly related to specific recommendations or views expressed in this report.

The research analysts for this report has not served as an officer, director or employee of the subject company PL or its research analysts have not engaged in market making activity for the subject company

Our sales people, traders, and other professionals or affiliates may provide oral or written market commentary or trading strategies to our clients that reflect opinions that are contrary to the opinions expressed herein, and our proprietary trading and investing businesses may make investment decisions that are inconsistent with the recommendations expressed herein. In reviewing these materials, you should be aware that any or all of the foregoing, among other things, may give rise to real or potential conflicts of interest.

PL and its associates, their directors and employees may (a) from time to time, have a long or short position in, and buy or sell the securities of the subject company or (b) be engaged in any other transaction involving such securities and earn brokerage or other compensation or act as a market maker in the financial instruments of the subject company or act as an advisor or lender/borrower to the subject company or may have any other potential conflict of interests with respect to any recommendation and other related information and opinions.

Regd. Office: 3rd Floor, Sadhana House, 570, P. B. Marg, Behind Mahindra Tower, Worli, Mumbai - 400 018, India.