

* Sensex 77988.68 -122.56

* Nifty 24196.75 -34.55

* Bank Nifty 56086.40 -215.55

Market Preview

Nifty resists near the 24300 zone

Nifty failed to hold on near the 24400 zone and slipped down with profit booking witnessed to end the session near 24200 zone with bias and sentiment still maintained with a cautious approach. BankNifty once again failed to move past the 56800 zone finding resistance and with profit booking seen closed the session near 56000 level with bias maintained with a cautious approach. The market breadth was positive with the advance decline indicating a ratio of 2:1 at close.

Market Forecast

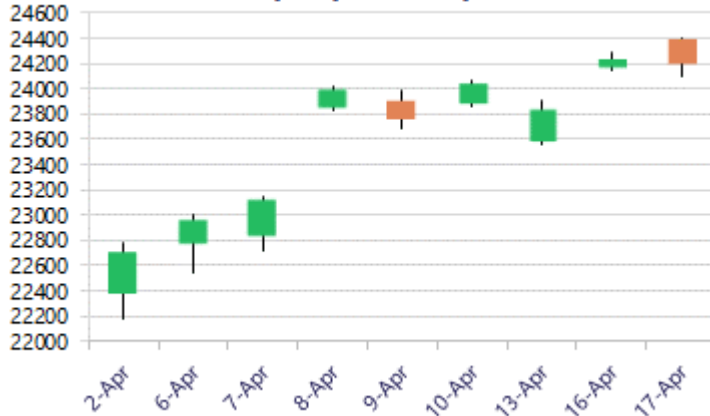
Nifty daily range 24000 - 24400

Nifty opened with a gap up near 24400 zone but fizzled out finding resistance and slipped down as the day progressed with profit booking seen and closed near the 24200 zone with bias and sentiment maintained with a cautiously positive approach as of now. As mentioned earlier, the index would have the 24300 zone as the important hurdle which needs to be breached decisively further to establish conviction in the coming days. On the downside, the near-term support would be positioned near the 23800 level while the next major support would be near 23200 as per the gap theory.

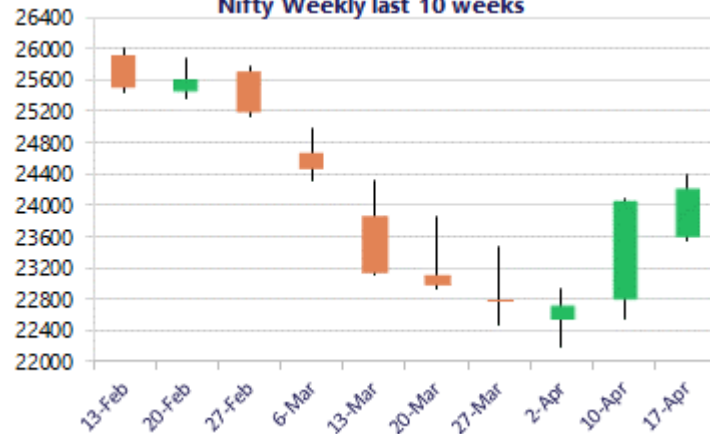
BankNifty once again opened near the 56800 zone where it found resistance and with heavy profit booking slipped down to close near the 56000 zone with bias maintained with a cautious approach and would need to breach above the 57000 zone decisively to establish conviction in the coming days. As mentioned earlier, on the downside, the index would need to sustain the 53500-level which is positioned as the important support zone to maintain the bias intact.

The support for the day is seen at 24000 levels, while the resistance is seen at 24400 levels. BankNifty would have the daily range of 55000-57300 levels.

Nifty daily last 10 days



Nifty Weekly last 10 weeks

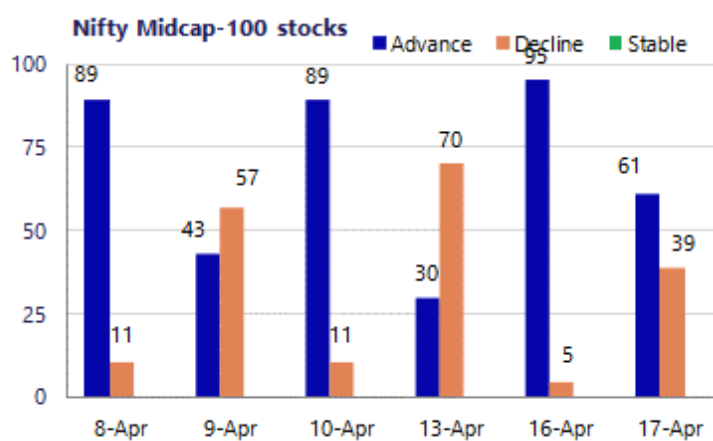
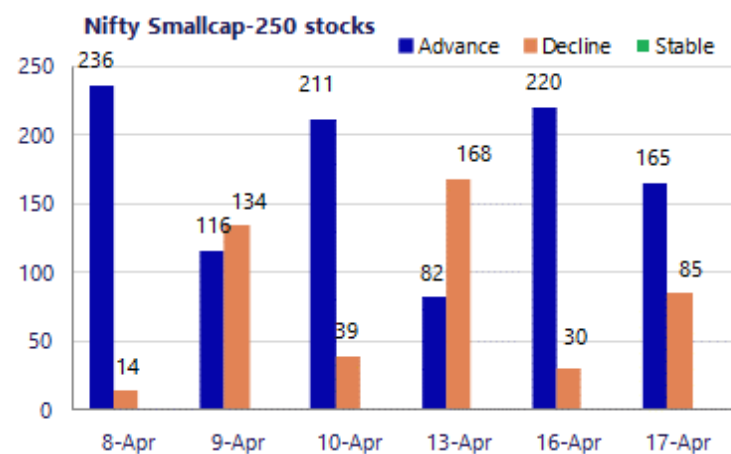


*Blue candle → Close rate > Open rate * Red candle → Close rate < Open rate

Sensex	Period	Closing	% Chng	Trend	Reversal	2 Sup	1 Sup	Pivot	1 Res	2 Res
Nifty	Daily	24196.75	-0.14%	10	23957.75	23935	24066	24234	24364	24532
	Weekly	24050.60	5.89%	1	22578.10	22025	23038	23556	24569	25087
	Monthly	22331.40	-11.31%	-3	26623.20	20499	21415	23202	24118	25905
Bank Nifty	Daily	56086.40	-0.38%	10	55463.50	55337	55712	56273	56648	57209
	Weekly	55912.75	8.47%	1	53295.70	49467	52690	54334	57557	59202
	Monthly	50275.35	-16.94%	-1	64512.75	43464	46870	53524	56929	63583
Sensex	Daily	77988.68	-0.16%	10	77237.15	77076	77532	78131	78588	79187
	Weekly	77550.25	5.77%	1	72197.45	71065	74307	75971	79214	80878
	Monthly	71947.55	-11.49%	-3	85936.10	66196	69072	74852	77728	83509

Gainers - Losers (Nifty 500 Stocks)

Gainers				Losers			
Company Name	Last Price	% Gain	Volume	Company Name	Last Price	% Loss	Volume
APTUS VALUE	246.86	7.02%	6190863	Astral Ltd	1,578.70	-3.21%	2336621
BHEL	309.26	5.73%	28266967	Ajanta Pharma	2827.6	-1.93%	87570
Adani Power	193.19	5.32%	69734617	Angel One	292.61	-1.73%	14441234
CG Consumer	260.97	5.25%	8987830	AB Capital	337.95	-1.67%	4047104
Adani Energy	1,222.60	4.39%	3144020	Anupam Rasayan	1,266.40	-1.66%	77722
CESC	170.48	4.36%	5918218	ABLBL	105.58	-1.52%	1623204
Allied Blenders	539.50	4.32%	840920	Aster DM Health	674.35	-1.27%	633360



Nifty Daily chart with RSI indicator



BankNifty Daily chart with RSI indicator

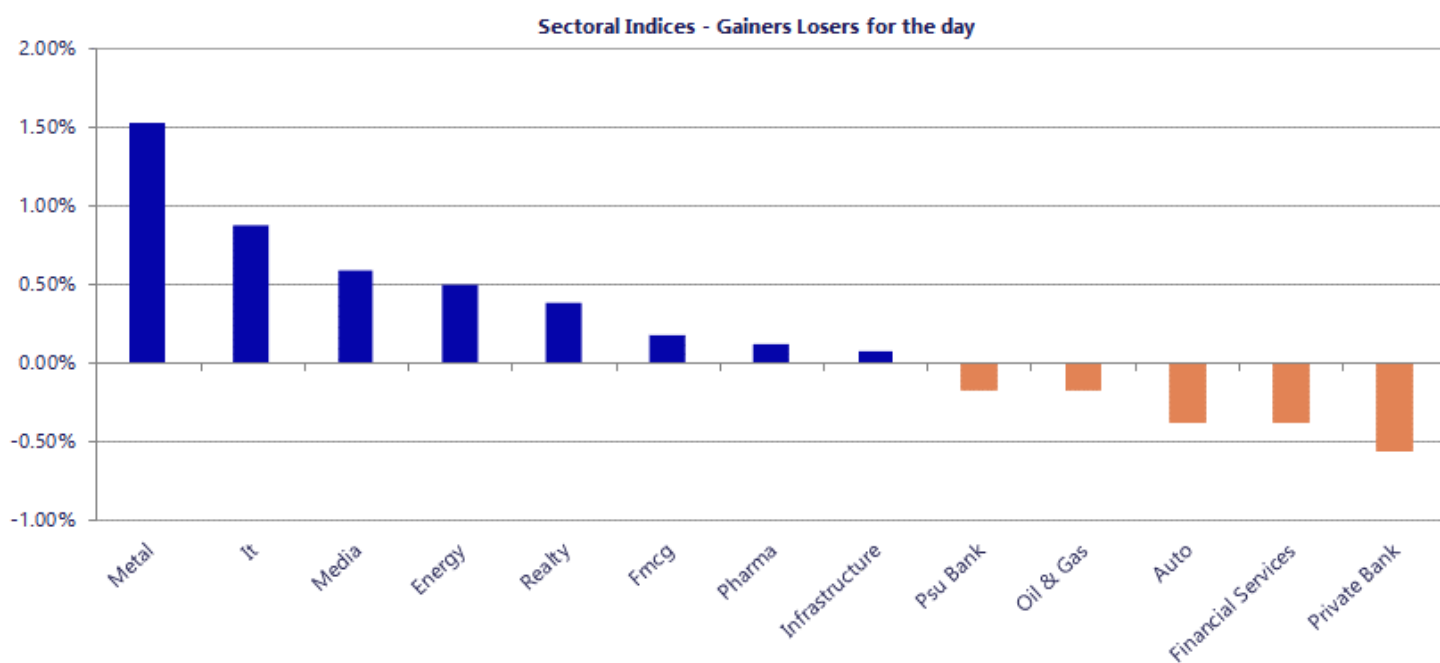


Breakouts - Cross above 200 DMA			
Company Name	LCP	Change %	200 DMA
Manaksia Steels	68.04	12.35	60.56
Lakshya Power	138	11.36	123.92
KIOCL	395.15	6.15	372.27
ABS Marine	203.95	5.61	193.11
Ishan Dyes	65.65	5.51	62.22
Harsha Engineer	407.15	4.88	388.2
Radico Khaitan	3036.4	4.06	2917.97
Lead Reclaim	78	3.90	75.07
India Cements	411.6	3.90	396.15
Diamond Power	148.28	3.73	142.95
CESC	170.48	3.47	164.77
Srivasavi	59	3.31	57.11
Akiko Global	212.7	3.17	206.16
Tips Music	574.5	2.78	558.98
Ashapura Logist	69.65	2.77	67.77
Pansari Develop	283.2	2.76	275.59
Allied Blenders	539.5	2.75	525.05
Rulka Elec.	117.55	2.65	114.52

Breakdown - Cross below 200 DMA			
Company Name	LCP	Change %	200 DMA
Alphageo	226.21	-4.33	236.44
GRP	1955	-3.41	2024
Zenithexpo	222.34	-2.72	228.55
Sejal Glass	659.35	-2.53	676.47
Atlas Cycles	105.79	-1.94	107.88
Lloyds Luxuries	77.6	-1.13	78.49
CSB Bank	402.7	-0.85	406.14
Arman Financial	1549.8	-0.71	1560.88
Regency Ceramic	45.25	-0.51	45.48
AYM Syntex	186.69	-0.10	186.88
TPL Plastech	70.15	-0.09	70.21

* Stocks crossing above its Simple Moving Average (200DMA)

* Stocks crossing below its Simple Moving Average (200DMA)



Nifty 50 Stocks - Summary Details											
Symbol	LTP	Chng	% Chng	Volume (lacs)	Turnover (crs.)	52w High	Diff with 52w H	52w Low	Diff with 52w L	365 days % chng	30 days % chng
NIFTY 50	24196.75	-34.55	-0.14%	5079.39	44630	26373	8.25%	22183	9.08%	3.37%	3.24%
ADANIENT	2210.00	65.60	3.06%	21.89	478	2617	15.54%	1753	26.07%	11.73%	-5.77%
ADANIPTS	1545.00	33.20	2.20%	74.76	1150	1584	2.46%	1179	31.04%	12.45%	25.31%
APOLLOHOSP	7562.50	-79.50	-1.04%	4.00	303	8100	6.63%	6678	13.25%	0.97%	7.95%
ASIANPAINT	2438.00	14.90	0.61%	14.96	364	2986	18.34%	2115	15.27%	9.93%	-0.89%
AXISBANK	1350.00	-5.50	-0.41%	52.32	707	1418	4.82%	1043	29.50%	11.14%	16.25%
BAJAJ-AUTO	9824.00	-41.00	-0.42%	4.79	470	10187	3.56%	7612	29.06%	8.28%	23.39%
BAJAJFINSV	1825.00	-0.80	-0.04%	10.35	190	2195	16.86%	1597	14.28%	2.88%	-7.32%
BAJFINANCE	906.95	-6.20	-0.68%	118.05	1081	1103	17.74%	788	15.11%	3.28%	0.14%
BEL	456.70	9.05	2.02%	121.95	553	473	3.54%	288	58.82%	6.33%	55.55%
BHARTIARTL	1835.50	-20.20	-1.09%	158.71	2918	2175	15.59%	1747	5.07%	2.61%	0.71%
CIPLA	1231.90	4.90	0.40%	17.78	219	1673	26.37%	1166	5.68%	-5.24%	-17.68%
COALINDIA	432.95	-2.85	-0.65%	117.72	509	476	9.04%	369	17.44%	-5.94%	8.44%
DRREDDY	1221.50	3.70	0.30%	20.14	246	1380	11.47%	1129	8.19%	-4.34%	5.45%
EICHERMOT	7130.50	2.50	0.04%	5.73	407	8230	13.36%	5220	36.61%	4.44%	26.98%
ETERNAL	252.91	6.24	2.53%	482.69	1210	368	31.36%	213	18.96%	13.90%	13.88%
GRASIM	2720.00	-21.40	-0.78%	8.03	219	2979	8.69%	2503	8.69%	2.47%	0.64%
HCLTECH	1448.50	-2.80	-0.19%	52.29	756	1780	18.63%	1298	11.62%	9.02%	1.17%
HDFCBANK	794.00	-15.90	-1.96%	628.47	5044	1021	22.20%	727	9.27%	-5.54%	-15.44%
HDFCLIFE	630.50	-9.95	-1.55%	30.20	193	821	23.18%	555	13.58%	0.72%	-11.95%
HINDALCO	1040.25	28.80	2.85%	109.42	1137	1049	0.81%	602	72.80%	12.93%	70.56%
HINDUNILVR	2139.10	-18.50	-0.86%	18.46	395	2750	22.21%	2023	5.77%	-1.68%	-9.61%
ICICIBANK	1343.90	-4.20	-0.31%	240.17	3246	1500	10.41%	1188	13.16%	5.58%	-0.92%
INDIGO	4617.00	-21.00	-0.45%	14.75	685	6233	25.92%	3895	18.53%	9.35%	-11.96%
INFY	1316.00	10.70	0.82%	185.26	2442	1728	23.84%	1215	8.30%	5.30%	-6.87%
ITC	303.95	1.90	0.63%	165.11	501	444	31.57%	287	5.91%	-1.39%	-28.39%
JIOFIN	241.51	-1.15	-0.47%	261.66	632	339	28.67%	223	8.15%	3.06%	-0.32%
JSWSTEEL	1216.90	-1.70	-0.14%	26.86	328	1285	5.28%	935	30.15%	6.22%	20.56%
KOTAKBANK	378.85	-3.55	-0.93%	120.59	460	460	17.71%	346	9.65%	2.43%	-10.79%
LT	4117.00	40.70	1.00%	50.92	2100	4440	7.27%	3162	30.19%	18.67%	27.55%
M&M	3220.00	-36.50	-1.12%	26.78	866	3840	16.14%	2602	23.73%	6.06%	22.22%
MARUTI	13340.00	51.00	0.38%	5.27	703	17370	23.20%	11289	18.17%	4.57%	14.37%
MAXHEALTH	991.50	1.45	0.15%	33.70	336	1314	24.56%	903	9.80%	2.15%	-7.98%
NESTLEIND	1257.90	1.30	0.10%	11.26	141	1340	6.15%	1085	15.97%	3.67%	5.56%
NTPC	391.15	-1.45	-0.37%	98.97	388	397	1.54%	316	23.96%	2.29%	8.86%
ONGC	282.85	-4.75	-1.65%	136.22	387	293	3.46%	228	23.81%	8.60%	17.26%
POWERGRID	313.40	0.95	0.30%	215.10	673	322	2.67%	250	25.36%	5.26%	2.50%
RELIANCE	1345.90	1.80	0.13%	302.10	4043	1612	16.50%	1228	9.64%	-3.53%	8.60%
SBILIFE	1974.00	3.00	0.15%	6.42	127	2132	7.41%	1525	29.44%	3.39%	26.10%
SBIN	1066.70	-4.80	-0.45%	203.11	2175	1235	13.61%	756	41.19%	#VALUE!	38.22%
SHRIRAMFIN	1021.95	1.00	0.10%	57.16	586	1108	7.77%	567	80.40%	3.02%	51.16%
SUNPHARMA	1695.00	-1.60	-0.09%	45.12	761	1851	8.44%	1548	9.50%	-4.95%	0.11%
TATACONSUM	1100.00	5.80	0.53%	14.40	158	1221	9.90%	1007	9.21%	0.67%	-0.53%
TATASTEEL	210.70	1.98	0.95%	267.48	564	216	2.66%	134	57.59%	12.71%	53.83%
TCS	2573.00	18.10	0.71%	39.04	1005	3631	29.13%	2346	9.67%	6.80%	-21.41%
TECHM	1488.00	4.20	0.28%	17.69	264	1854	19.74%	1276	16.62%	11.09%	13.70%
TITAN	4462.00	-60.20	-1.33%	12.84	575	4554	2.02%	3211	38.95%	9.07%	36.37%
TMPV	356.60	-1.30	-0.36%	68.70	245	744	52.07%	294	21.17%	13.42%	-42.12%
TRENT	4088.40	110.20	2.77%	13.93	564	6261	34.70%	3276	24.82%	13.69%	-18.81%
ULTRACEMCO	11775.00	-10.00	-0.08%	3.09	364	13110	10.18%	10325	14.04%	6.09%	0.40%
WIPRO	210.15	0.40	0.19%	362.96	763	273	23.05%	187	12.68%	7.71%	-15.14%

Disclaimer / Disclosures

ANALYST CERTIFICATION

I, Mrs. Vaishali Parekh B.com, Research Analyst, author and the name subscribed to this report, hereby certify that all of the views expressed in this research report accurately reflect our views about the subject issuer(s) or securities. We also certify that no part of our compensation was, is, or will be directly or indirectly related to the specific recommendation(s) or view(s) in this report.

Terms & conditions and other disclosures:

Prabhudas Lilladher Pvt. Ltd, Mumbai, India (hereinafter referred to as "PL") is engaged in the business of Stock Broking, Portfolio Manager, Depository Participant and distribution for third party financial products. PL is a subsidiary of Prabhudas Lilladher Advisory Services Pvt Ltd. which has its various subsidiaries engaged in business of commodity broking, investment banking, financial services (margin funding) and distribution of third party financial/other products, details in respect of which are available at www.plindia.com

This document has been prepared by the Research Division of PL and is meant for use by the recipient only as information and is not for circulation. This document is not to be reported or copied or made available to others without prior permission of PL. It should not be considered or taken as an offer to sell or a solicitation to buy or sell any security.

The information contained in this report has been obtained from sources that are considered to be reliable. However, PL has not independently verified the accuracy or completeness of the same. Neither PL nor any of its affiliates, its directors or its employees accepts any responsibility of whatsoever nature for the information, statements and opinion given, made available or expressed herein or for any omission therein.

Recipients of this report should be aware that past performance is not necessarily a guide to future performance and value of investments can go down as well. The suitability or otherwise of any investments will depend upon the recipient's particular circumstances and, in case of doubt, advice should be sought from an independent expert/advisor.

Either PL or its affiliates or its directors or its employees or its representatives or its clients or their relatives may have position(s), make market, act as principal or engage in transactions of securities of companies referred to in this report and they may have used the research material prior to publication.

PL may from time to time solicit or perform investment banking or other services for any company mentioned in this document.

PL is registered as Research Analyst under Securities and Exchange Board of India (Research Analysts) Regulations, 2014 PL submits that no material disciplinary action has been taken on us by any Regulatory Authority impacting Equity Research Analysis activities.

PL or its research analysts or its associates or his relatives do not have any financial interest in the subject company.

PL or its research analysts or its associates or his relatives do not have actual/beneficial ownership of one per cent or more securities of the subject company at the end of the month immediately preceding the date of publication of the research report.

PL or its research analysts or its associates or his relatives do not have any material conflict of interest at the time of publication of the research report.

PL or its associates might have received compensation from the subject company in the past twelve months.

PL or its associates might have managed or co-managed public offering of securities for the subject company in the past twelve months or mandated by the subject company for any other assignment in the past twelve months.

PL or its associates might have received any compensation for investment banking or merchant banking or brokerage services from the subject company in the past twelve months.

PL or its associates might have received any compensation for products or services other than investment banking or merchant banking or brokerage services from the subject company in the past twelve months PL or its associates might have received any compensation or other benefits from the subject company or third party in connection with the research report.

PL encourages independence in research report preparation and strives to minimize conflict in preparation of research report. PL or its analysts did not receive any compensation or other benefits from the subject Company or third party in connection with the preparation of the research report. PL or its Research Analysts do not have any material conflict of interest at the time of publication of this report.

It is confirmed that Mrs. Vaishali Parekh B.com, Research Analyst of this report has not received any compensation from the companies mentioned in the report in the preceding twelve months compensation of our Research Analysts is not based on any specific merchant banking, investment banking or brokerage service transactions.

The Research analysts for this report certifies that all of the views expressed in this report accurately reflect his or her personal views about the subject company or companies and its or their securities, and no part of his or her compensation was, is or will be, directly or indirectly related to specific recommendations or views expressed in this report.

The research analysts for this report has not served as an officer, director or employee of the subject company PL or its research analysts have not engaged in market making activity for the subject company

Our sales people, traders, and other professionals or affiliates may provide oral or written market commentary or trading strategies to our clients that reflect opinions that are contrary to the opinions expressed herein, and our proprietary trading and investing businesses may make investment decisions that are inconsistent with the recommendations expressed herein. In reviewing these materials, you should be aware that any or all of the foregoing, among other things, may give rise to real or potential conflicts of interest.

PL and its associates, their directors and employees may (a) from time to time, have a long or short position in, and buy or sell the securities of the subject company or (b) be engaged in any other transaction involving such securities and earn brokerage or other compensation or act as a market maker in the financial instruments of the subject company or act as an advisor or lender/borrower to the subject company or may have any other potential conflict of interests with respect to any recommendation and other related information and opinions.

Regd. Office: 3rd Floor, Sadhana House, 570, P. B. Marg, Behind Mahindra Tower, Worli, Mumbai - 400 018, India.