

* Sensex 78493.54 + 504.86

* Nifty 24353.55 + 156.80

* Bank Nifty 56565.70 + 479.30

Market Preview

Nifty sustains 24300 zone; bias cautiously positive

Nifty gained steadily during the session to sustain the important hurdle of 24300 level and with bias maintained with a cautiously positive would need to breach above the 24350 band decisively. BankNifty witnessed a rangebound movement since the last 3 sessions and would need a decisive breach above the 57000 zone. The market breadth was positive with the advance decline indicating a ratio of 5:2 at close.

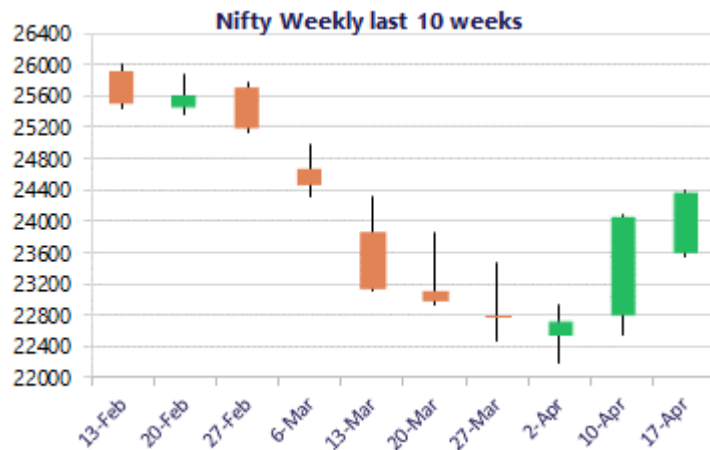
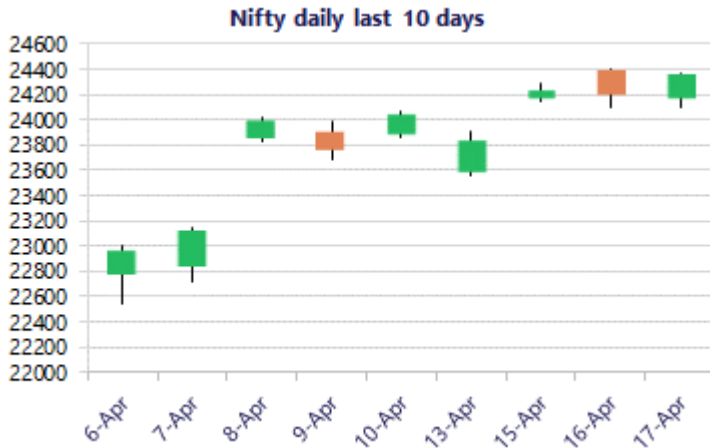
Market Forecast

Nifty daily range 24100 - 24500

Nifty has been sustaining the near-term support at 24100 zone near the important 50EMA level and once again witnessed a steady rise during the session and closed near the 24350 zone with overall bias maintained with a cautiously positive approach as of now. The index is hovering near the important hurdle of 24300-24400 band which is very crucial and would need a decisive breach above this zone to establish conviction and clarity for further upward move in the coming days. On the downside, as mentioned earlier, the near-term support would be positioned near the 23800 level while the next major support would be near 23200 as per the gap theory.

BankNifty has been gripped within a tight range for the past 3 sessions having the resistance zone at 56800 level with support sustained near the 56000 level near the important 50EMA average level which needs to be sustained in the coming days. The overall bias and sentiment is currently maintained with a cautious approach and would need a decisive breach above the 57000 zone to establish conviction whereas on the downside, the index would need to sustain the 53500-level which is positioned as the important support zone to maintain the bias intact.

The support for the day is seen at 24100 levels, while the resistance is seen at 24500 levels. BankNifty would have the daily range of 55700-57300 levels.



*Blue candle → Close rate > Open rate * Red candle → Close rate < Open rate

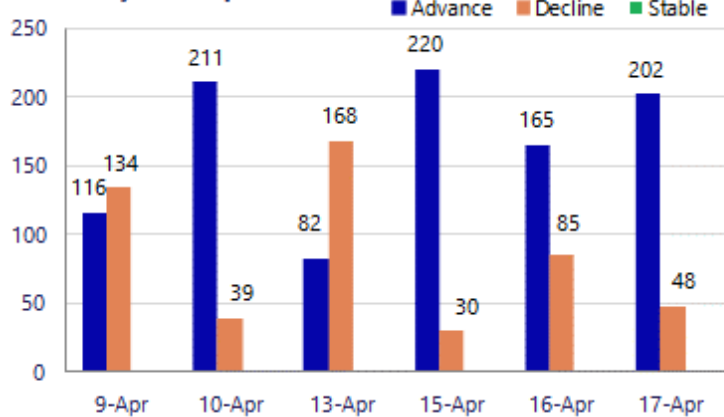
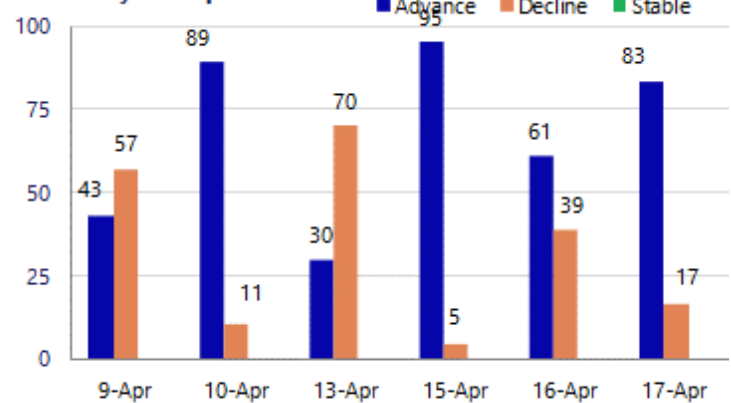
Sensex	Period	Closing	% Chng	Trend	Reversal	2 Sup	1 Sup	Pivot	1 Res	2 Res
Nifty	Daily	24353.55	0.65%	11	24147.50	23998	24176	24274	24452	24550
	Weekly	24353.55	1.26%	2	22464.50	23258	23806	24103	24651	24949
	Monthly	22331.40	-11.31%	-3	26623.20	20499	21415	23202	24118	25905
Bank Nifty	Daily	56565.70	0.85%	11	56055.30	55558	56062	56345	56849	57132
	Weekly	56565.70	1.17%	2	52374.40	53441	55003	55919	57481	58397
	Monthly	50275.35	-16.94%	-1	64512.75	43464	46870	53524	56929	63583
Sensex	Daily	78493.54	0.65%	11	77842.00	77431	77962	78258	78789	79085
	Weekly	78493.54	1.22%	2	71897.65	74835	76664	77697	79526	80559
	Monthly	71947.55	-11.49%	-3	85936.10	66196	69072	74852	77728	83509

Gainers - Losers (Nifty 500 Stocks)
Gainers

Company Name	Last Price	% Gain	Volume
Angel One	322.47	10.20%	80862076
Aditya Infotech	2,264.30	7.91%	1430534
Aegis Logistics	709.3	7.54%	6929914
Allied Blenders	573.80	6.36%	1080212
ACME Solar	304.65	5.98%	3736873
Adani Total Gas	632.90	5.91%	8865094
Avenue Supermar	4,628.50	4.52%	1366272

Losers

Company Name	Last Price	% Loss	Volume
Afcons Infra	333.60	-3.85%	1789707
Billionbrains G	198.34	-2.29%	67863455
Ather Energy	850.95	-1.75%	3980599
Ajanta Pharma	2,790.20	-1.32%	114512
Ashok Leyland	174.78	-1.10%	21767114
Berger Paints	468.6	-0.74%	159612
ACC	1432.2	-0.73%	497706

Nifty Smallcap-250 stocks

Nifty Midcap-100 stocks


Nifty Daily chart with RSI indicator



BankNifty Daily chart with RSI indicator



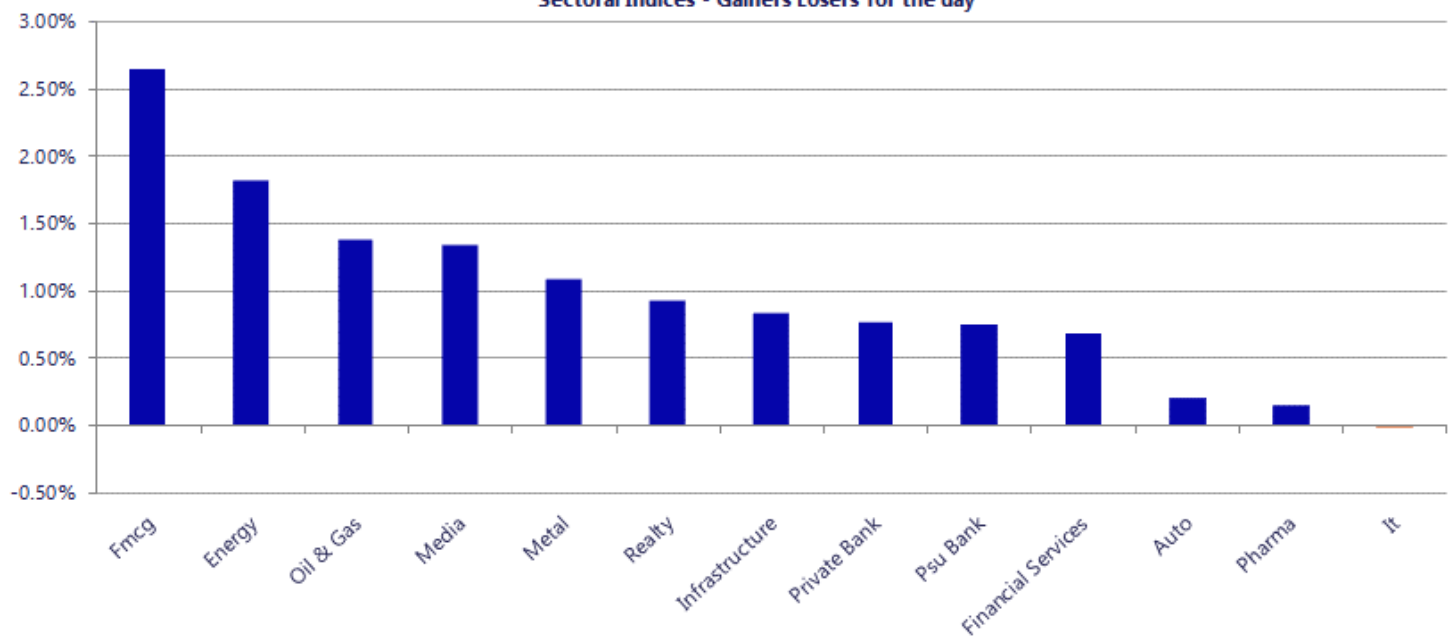
Breakouts - Cross above 200 DMA			
Company Name	LCP	Change %	200 DMA
Apollo Micro Sy	282.9	15.61	244.7
Nagreeka Cap	30.12	10.82	27.18
Bazaar Style Re	338.05	10.40	306.21
MMTC	68.32	6.98	63.86
Birla Cable	160.32	6.94	149.92
Windsor	305.99	6.06	288.52
Hindprakash Ind	139.83	5.22	132.89
ADF Foods	226.94	4.91	216.31
Automotive Axle	1881.9	4.61	1799.05
HDFC AMC	2792.4	4.27	2678.17
Megatherm Induc	267.35	4.22	256.53
Tilaknagar Ind	470	4.18	451.14
Smartlink Net	141.64	4.05	136.13
Kriti Nutrients	88	3.90	84.7
VST	264.83	3.85	255
Lloyds Luxuries	81.45	3.82	78.45
Hatsun Agro	981.3	3.79	945.47
DJ Mediaprint	92.62	3.76	89.26

* Stocks crossing above its Simple Moving Average (200DMA)

Breakdown - Cross below 200 DMA			
Company Name	LCP	Change %	200 DMA
Chandan Healthc	259.25	-2.82	266.78
Rajputana Indus	78.05	-2.58	80.12
Astec Life	726.8	-1.39	737.01
New India Assur	167.34	-1.36	169.65
Enviro Infra	213.04	-1.16	215.53
Digjam	47.4	-1.13	47.94
Transindia Real	28.57	-1.00	28.86
Nikita Greentec	118	-0.80	118.95
The Western Ind	155.63	-0.75	156.81
JTL Ind.	66.76	-0.55	67.13
Tarmat	53.44	-0.54	53.73
Sigma Solve	46.48	-0.47	46.7
Archean Chem	606.65	-0.31	608.56
Technocraft Ind	2455.8	-0.29	2462.97
Rulka Elec.	114.05	-0.26	114.35
Ginni Filaments	42.31	-0.19	42.39
Ashapura Logist	67.7	-0.10	67.77
Banka Bioloo	73.06	-0.08	73.12

* Stocks crossing below its Simple Moving Average (200DMA)

Sectoral Indices - Gainers Losers for the day



Nifty 50 Stocks - Summary Details											
Symbol	LTP	Chng	% Chng	Volume (lacs)	Turnover (crs.)	52w High	Diff with 52w H	52w Low	Diff with 52w L	365 days % chng	30 days % chng
NIFTY 50	24353.55	156.80	0.65%	4981.17	35355	26373	7.66%	22183	9.79%	3.28%	2.10%
ADANIENT	2224.00	20.30	0.92%	24.08	531	2617	15.00%	1753	26.87%	12.58%	-5.27%
ADANIPTS	1572.40	22.60	1.46%	60.24	945	1584	0.73%	1181	33.12%	15.15%	24.85%
APOLLOHOSP	7710.00	157.00	2.08%	3.44	263	8100	4.81%	6678	15.46%	2.80%	9.00%
ASIANPAINT	2471.60	31.30	1.28%	12.87	317	2986	17.22%	2115	16.86%	10.43%	0.15%
AXISBANK	1364.00	14.40	1.07%	40.62	550	1418	3.83%	1043	30.84%	11.07%	14.54%
BAJAJ-AUTO	9750.00	-75.00	-0.76%	2.64	258	10187	4.29%	7612	28.09%	7.03%	21.60%
BAJAJFINSV	1838.00	8.10	0.44%	4.88	89	2195	16.26%	1597	15.09%	3.57%	-9.69%
BAJFINANCE	909.00	3.10	0.34%	60.34	547	1103	17.55%	788	15.37%	4.65%	-0.79%
BEL	461.80	6.15	1.35%	141.21	649	473	2.46%	291	58.61%	5.11%	56.46%
BHARTIARTL	1847.30	6.70	0.36%	73.44	1352	2175	15.05%	1747	5.75%	1.11%	-2.21%
CIPLA	1244.50	14.00	1.14%	22.91	284	1673	25.61%	1166	6.76%	-2.92%	-17.87%
COALINDIA	438.60	5.85	1.35%	107.32	469	476	7.86%	369	18.97%	-5.12%	9.97%
DRREDDY	1238.00	16.60	1.36%	25.64	315	1380	10.27%	1129	9.62%	-3.57%	6.39%
EICHERMOT	7172.00	41.00	0.57%	5.83	417	8230	12.86%	5220	37.41%	3.79%	26.30%
ETERNAL	252.20	-0.50	-0.20%	358.84	904	368	31.55%	213	18.63%	7.49%	8.89%
GRASIM	2722.50	5.20	0.19%	4.27	116	2979	8.61%	2503	8.79%	1.46%	-1.38%
HCLTECH	1443.00	-7.20	-0.50%	33.19	477	1780	18.94%	1298	11.20%	9.23%	0.35%
HDFCBANK	800.00	4.55	0.57%	372.68	2979	1021	21.61%	727	10.09%	-5.36%	-16.09%
HDFCLIFE	616.25	-15.25	-2.41%	81.56	500	821	24.92%	555	11.02%	-4.06%	-14.42%
HINDALCO	1039.05	-0.85	-0.08%	43.02	445	1049	0.92%	602	72.60%	10.93%	70.48%
HINDUNILVR	2240.00	100.90	4.72%	48.82	1087	2750	18.55%	2023	10.75%	3.79%	-5.68%
ICICIBANK	1352.80	7.30	0.54%	181.51	2435	1500	9.81%	1188	13.91%	4.97%	-3.83%
INDIGO	4634.00	25.30	0.55%	7.62	353	6233	25.65%	3895	18.97%	8.07%	-13.64%
INFY	1320.00	0.80	0.06%	120.63	1586	1728	23.61%	1215	8.63%	7.06%	-7.01%
ITC	307.00	3.60	1.19%	351.07	1080	444	30.89%	287	6.97%	0.71%	-28.15%
JIOFIN	244.80	3.53	1.46%	514.39	1249	339	27.70%	223	9.63%	3.03%	-0.68%
JSWSTEEL	1241.60	26.70	2.20%	18.76	231	1285	3.35%	935	32.79%	6.37%	23.27%
KOTAKBANK	383.35	4.20	1.11%	116.22	445	460	16.73%	346	10.96%	2.45%	-12.40%
LT	4105.00	-14.80	-0.36%	27.96	1147	4440	7.55%	3162	29.81%	15.87%	26.41%
M&M	3202.00	-20.30	-0.63%	21.80	700	3840	16.61%	2602	23.04%	2.34%	19.50%
MARUTI	13474.00	139.00	1.04%	5.49	742	17370	22.43%	11289	19.36%	3.87%	15.21%
MAXHEALTH	1008.00	17.35	1.75%	16.41	165	1314	23.31%	903	11.63%	3.24%	-7.05%
NESTLEIND	1285.10	27.70	2.20%	19.94	256	1340	4.13%	1085	18.48%	6.48%	6.36%
NTPC	393.70	2.90	0.74%	153.18	600	397	0.89%	316	24.77%	2.70%	8.16%
ONGC	284.00	1.25	0.44%	174.53	496	293	3.07%	228	24.32%	7.27%	16.64%
POWERGRID	318.15	5.90	1.89%	136.03	430	322	1.20%	250	27.26%	6.58%	2.96%
RELIANCE	1364.90	21.60	1.61%	138.63	1884	1612	15.32%	1228	11.18%	-2.34%	7.09%
SBILIFE	1968.10	-6.60	-0.33%	5.34	105	2132	7.69%	1549	27.10%	1.86%	22.38%
SBIN	1080.30	13.15	1.23%	168.22	1805	1235	12.51%	756	42.99%	1.47%	35.47%
SHRIRAMFIN	1037.00	14.25	1.39%	43.45	449	1108	6.41%	567	83.05%	3.23%	49.91%
SUNPHARMA	1675.50	-17.60	-1.04%	31.46	528	1851	9.49%	1548	8.24%	-6.63%	-4.34%
TATACONSUM	1112.10	9.50	0.86%	12.88	144	1221	8.91%	1007	10.42%	3.16%	-0.72%
TATASTEEL	211.82	1.13	0.54%	228.31	481	216	2.14%	134	58.43%	8.39%	54.46%
TCS	2583.60	6.70	0.26%	27.17	700	3631	28.84%	2346	10.12%	8.02%	-21.68%
TECHM	1512.30	21.30	1.43%	18.59	281	1854	18.43%	1276	18.53%	12.71%	15.73%
TITAN	4524.00	62.60	1.40%	21.24	947	4554	0.66%	3211	40.88%	10.60%	35.96%
TMPV	361.00	4.70	1.32%	73.13	262	744	51.48%	294	22.66%	13.10%	-41.92%
TRENT	4097.80	14.50	0.36%	12.48	515	6261	34.55%	3276	25.10%	12.75%	-20.13%
ULTRACEMCO	11867.00	41.00	0.35%	1.65	196	13110	9.48%	10325	14.93%	6.76%	-0.29%
WIPRO	204.30	-5.96	-2.83%	805.22	1646	273	25.19%	187	9.54%	6.78%	-13.76%

Disclaimer / Disclosures

ANALYST CERTIFICATION

I, Mrs. Vaishali Parekh B.com, Research Analyst, author and the name subscribed to this report, hereby certify that all of the views expressed in this research report accurately reflect our views about the subject issuer(s) or securities. We also certify that no part of our compensation was, is, or will be directly or indirectly related to the specific recommendation(s) or view(s) in this report.

Terms & conditions and other disclosures:

Prabhudas Lilladher Pvt. Ltd, Mumbai, India (hereinafter referred to as "PL") is engaged in the business of Stock Broking, Portfolio Manager, Depository Participant and distribution for third party financial products. PL is a subsidiary of Prabhudas Lilladher Advisory Services Pvt Ltd. which has its various subsidiaries engaged in business of commodity broking, investment banking, financial services (margin funding) and distribution of third party financial/other products, details in respect of which are available at www.plindia.com

This document has been prepared by the Research Division of PL and is meant for use by the recipient only as information and is not for circulation. This document is not to be reported or copied or made available to others without prior permission of PL. It should not be considered or taken as an offer to sell or a solicitation to buy or sell any security.

The information contained in this report has been obtained from sources that are considered to be reliable. However, PL has not independently verified the accuracy or completeness of the same. Neither PL nor any of its affiliates, its directors or its employees accepts any responsibility of whatsoever nature for the information, statements and opinion given, made available or expressed herein or for any omission therein.

Recipients of this report should be aware that past performance is not necessarily a guide to future performance and value of investments can go down as well. The suitability or otherwise of any investments will depend upon the recipient's particular circumstances and, in case of doubt, advice should be sought from an independent expert/advisor.

Either PL or its affiliates or its directors or its employees or its representatives or its clients or their relatives may have position(s), make market, act as principal or engage in transactions of securities of companies referred to in this report and they may have used the research material prior to publication.

PL may from time to time solicit or perform investment banking or other services for any company mentioned in this document.

PL is registered as Research Analyst under Securities and Exchange Board of India (Research Analysts) Regulations, 2014 PL submits that no material disciplinary action has been taken on us by any Regulatory Authority impacting Equity Research Analysis activities.

PL or its research analysts or its associates or his relatives do not have any financial interest in the subject company.

PL or its research analysts or its associates or his relatives do not have actual/beneficial ownership of one per cent or more securities of the subject company at the end of the month immediately preceding the date of publication of the research report.

PL or its research analysts or its associates or his relatives do not have any material conflict of interest at the time of publication of the research report.

PL or its associates might have received compensation from the subject company in the past twelve months.

PL or its associates might have managed or co-managed public offering of securities for the subject company in the past twelve months or mandated by the subject company for any other assignment in the past twelve months.

PL or its associates might have received any compensation for investment banking or merchant banking or brokerage services from the subject company in the past twelve months.

PL or its associates might have received any compensation for products or services other than investment banking or merchant banking or brokerage services from the subject company in the past twelve months PL or its associates might have received any compensation or other benefits from the subject company or third party in connection with the research report.

PL encourages independence in research report preparation and strives to minimize conflict in preparation of research report. PL or its analysts did not receive any compensation or other benefits from the subject Company or third party in connection with the preparation of the research report. PL or its Research Analysts do not have any material conflict of interest at the time of publication of this report.

It is confirmed that Mrs. Vaishali Parekh B.com, Research Analyst of this report has not received any compensation from the companies mentioned in the report in the preceding twelve months compensation of our Research Analysts is not based on any specific merchant banking, investment banking or brokerage service transactions.

The Research analysts for this report certifies that all of the views expressed in this report accurately reflect his or her personal views about the subject company or companies and its or their securities, and no part of his or her compensation was, is or will be, directly or indirectly related to specific recommendations or views expressed in this report.

The research analysts for this report has not served as an officer, director or employee of the subject company PL or its research analysts have not engaged in market making activity for the subject company

Our sales people, traders, and other professionals or affiliates may provide oral or written market commentary or trading strategies to our clients that reflect opinions that are contrary to the opinions expressed herein, and our proprietary trading and investing businesses may make investment decisions that are inconsistent with the recommendations expressed herein. In reviewing these materials, you should be aware that any or all of the foregoing, among other things, may give rise to real or potential conflicts of interest.

PL and its associates, their directors and employees may (a) from time to time, have a long or short position in, and buy or sell the securities of the subject company or (b) be engaged in any other transaction involving such securities and earn brokerage or other compensation or act as a market maker in the financial instruments of the subject company or act as an advisor or lender/borrower to the subject company or may have any other potential conflict of interests with respect to any recommendation and other related information and opinions.

Regd. Office: 3rd Floor, Sadhana House, 570, P. B. Marg, Behind Mahindra Tower, Worli, Mumbai - 400 018, India.