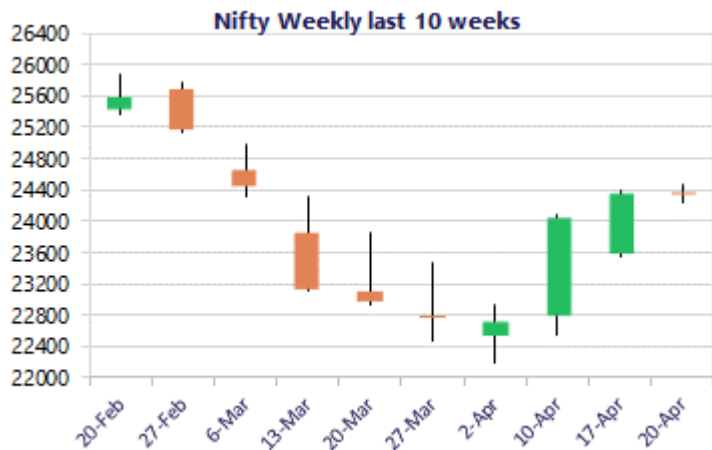
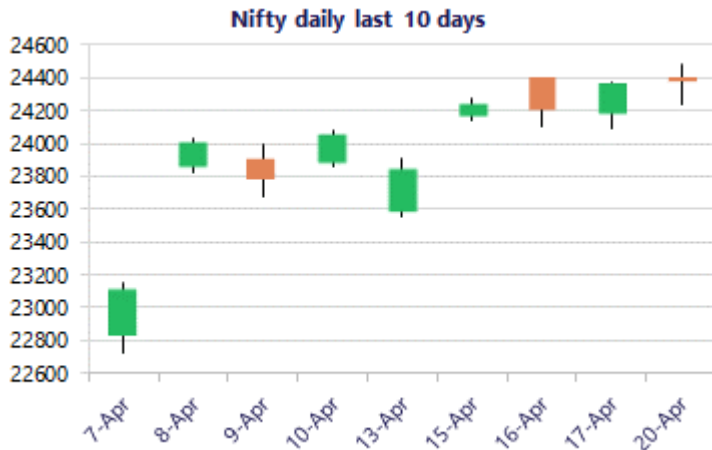


\* Sensex 78520.30 + 26.76

\* Nifty 24364.85 + 11.30

\* Bank Nifty 56582.35 + 16.65



\*Blue candle → Close rate > Open rate \* Red candle → Close rate < Open rate

## Market Preview

### Nifty hovering near the crucial 24300 zone

Nifty is hovering near the crucial 24300 zone and with fluctuations witnessed during the session failed to cross above the 24480 zone with bias and sentiment still maintained with a cautious approach. BankNifty ended on a flat note with volatility visible and would need to sustain above the 55800 level in the coming sessions. The market breadth was slightly negative with the advance decline indicating a ratio of 3:4 at close.

## Market Forecast

### Nifty daily range 24100 - 24500

Nifty witnessed a volatile session finding resistance near the 24470 zone and is precariously placed with the 24300-zone positioned as the important band which needs to be sustained as of now, failing which the index can slide further with profit booking anticipated having the important supports at 23600 and 23100 level in the coming days. On the upside, the 200 period MA at 25000 zone shall be positioned as the major resistance level which needs to be breached to establish strength.

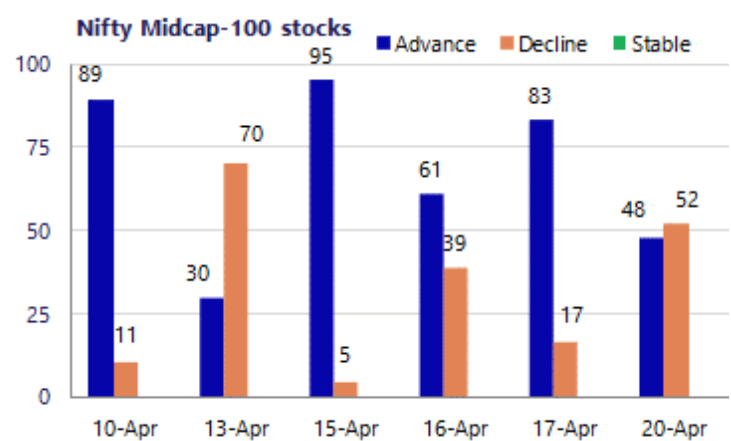
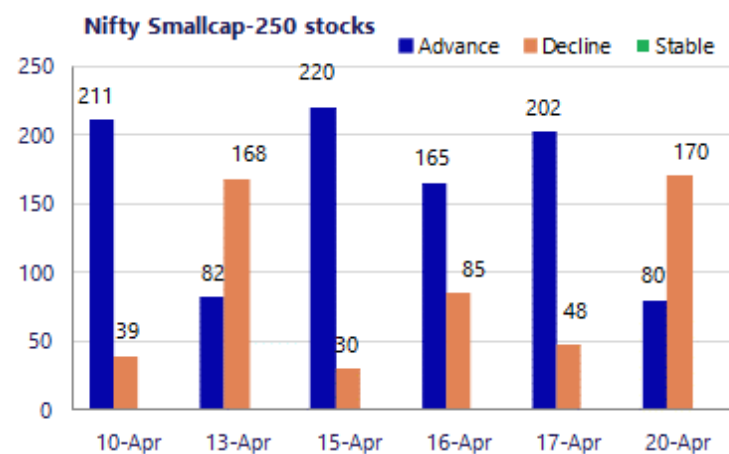
BankNifty managed to just move past the 57000 zone during the intraday session but amid fluctuations slipped in the later half to end near the 56600 level with bias maintained with a cautious positive approach as of now. The 200 period MA at 57250 zone shall be the major resistance zone which needs to be breached decisively to establish conviction and strength whereas the 55800 zone shall be the crucial support which needs to be sustained to maintain the overall bias intact failing which one can anticipate for further slide in the coming days having the 53500 level as the important support.

The support for the day is seen at 24100 levels, while the resistance is seen at 24500 levels. BankNifty would have the daily range of 55700-57300 levels.

Sensex	Period	Closing	% Chng	Trend	Reversal	2 Sup	1 Sup	Pivot	1 Res	2 Res
Nifty	Daily	24364.85	0.05%	12	24197.40	24123	24244	24362	24483	24602
	Weekly	24353.55	1.26%	2	22464.50	23258	23806	24103	24651	24949
	Monthly	22331.40	-11.31%	-3	26623.20	20499	21415	23202	24118	25905
Bank Nifty	Daily	56582.35	0.03%	12	56173.10	55946	56264	56675	56993	57403
	Weekly	56565.70	1.17%	2	52374.40	53441	55003	55919	57481	58397
	Monthly	50275.35	-16.94%	-1	64512.75	43464	46870	53524	56929	63583
Sensex	Daily	78520.30	0.03%	12	77977.55	77816	78168	78555	78907	79295
	Weekly	78493.54	1.22%	2	71897.65	74835	76664	77697	79526	80559
	Monthly	71947.55	-11.49%	-3	85936.10	66196	69072	74852	77728	83509

### Gainers - Losers ( Nifty 500 Stocks )

Gainers				Losers			
Company Name	Last Price	% Gain	Volume	Company Name	Last Price	% Loss	Volume
Ather Energy	889.45	4.52%	14791155	IEX	124.99	-7.97%	37694740
Aegis Logistics	740.50	4.40%	2459326	Guj Mineral	691.25	-6.19%	11197273
Apar Ind	11977	4.31%	183598	Cohance Life	369.20	-5.47%	3206128
Adani Green Ene	1,152.70	2.25%	7598134	CarTrade Tech	1,770.40	-4.71%	715998
Asian Paints	2,516.80	2.14%	1203097	Inventurus Know	1,430.10	-4.60%	316553
Acutaas Chem	2,410.70	2.07%	264167	IGIL	357.15	-4.21%	572116
ABB India	7,158.00	1.83%	559820	Ola Electric	39.22	-3.92%	144948886



### Nifty Daily chart with RSI indicator



### BankNifty Daily chart with RSI indicator

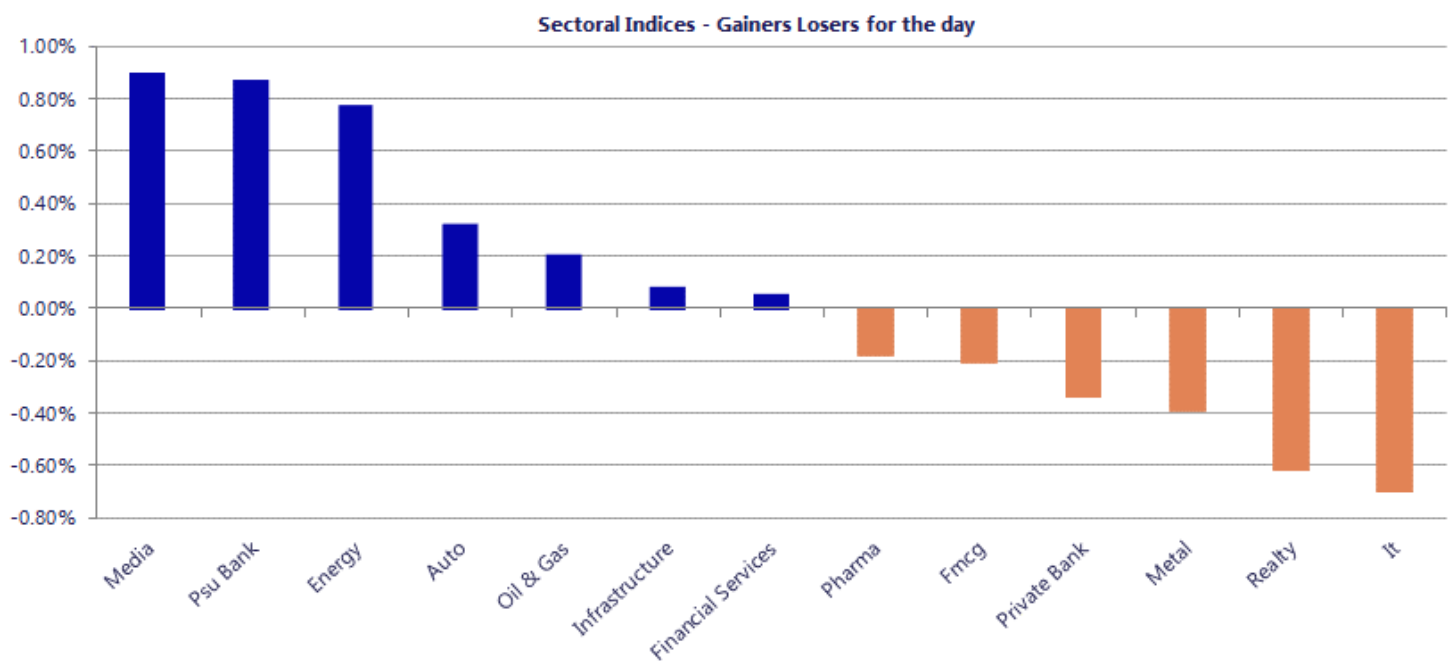


Breakouts - Cross above 200 DMA			
Company Name	LCP	Change %	200 DMA
Triveni Turbine	576.2	9.21	527.62
RBM Infracon	443.65	6.40	416.98
Soma Textile	106.11	6.16	99.95
Balrampur Chini	515.7	4.89	491.66
Karma Energy	53.34	2.99	51.79
Gokul Refoils	41.25	2.46	40.26
Kakatiya Cement	138.08	2.31	134.96
Grindwell Norto	1627.1	2.19	1592.24
Danish Power	794.1	2.09	777.84
Talbros Auto	281.41	1.99	275.91
Tube Investment	2873.1	1.96	2817.93
Tembo Global	601.7	1.80	591.07
Vineet Lab	36.21	1.71	35.6
Rajputana Indus	81.45	1.67	80.11
JTL Ind.	67.94	1.27	67.09
Eldeco Housing	842.55	0.97	834.49
LLOYDS ENTER	65.88	0.90	65.29
Techno Electric	1264.25	0.77	1254.59

\* Stocks crossing above its Simple Moving Average (200DMA)

Breakdown - Cross below 200 DMA			
Company Name	LCP	Change %	200 DMA
Rajputana Bio	226.6	-7.33	244.53
Signet Ind	50.61	-5.01	53.28
KN Agri	197.47	-4.93	207.72
Ola Electric	39.22	-3.54	40.66
Ratnaveer Preci	145.74	-2.82	149.97
Carysil	863.4	-2.59	886.38
SKM Egg Product	171.98	-2.32	176.07
Sandhar Technol	494.25	-2.22	505.48
STC India	120.73	-2.16	123.4
Global Vectra	197.53	-2.07	201.7
IZMO	719.95	-2.04	734.95
Ishan Dyes	61.1	-2.04	62.37
HOEC	152.26	-2.00	155.37
Gandhar Oil	143.01	-1.96	145.87
HVAX Technologi	786	-1.91	801.33
Cineline India	85.51	-1.90	87.17
Pondy Oxides	1187.3	-1.90	1210.32
Cords Cable Ind	174.34	-1.80	177.53

\* Stocks crossing below its Simple Moving Average (200DMA)



Nifty 50 Stocks - Summary Details											
Symbol	LTP	Chng	% Chng	Volume (lacs)	Turnover (crs.)	52w High	Diff with 52w H	52w Low	Diff with 52w L	365 days % chng	30 days % chng
NIFTY 50	24364.85	11.30	0.05%	4158.96	35040	26373	7.62%	22183	9.84%	5.41%	2.15%
ADANIENT	2225.60	7.30	0.33%	17.95	402	2617	14.94%	1753	26.96%	15.49%	-5.20%
ADANI PORTS	1572.10	-1.30	-0.08%	29.99	475	1601	1.77%	1181	33.09%	15.14%	24.83%
APOLLOHOSP	7660.00	-39.00	-0.51%	3.44	264	8100	5.43%	6678	14.71%	4.01%	8.29%
ASIANPAINT	2510.00	46.00	1.87%	12.03	301	2986	15.93%	2115	18.68%	14.33%	1.71%
AXISBANK	1355.00	-4.10	-0.30%	48.78	663	1418	4.46%	1043	29.98%	12.55%	13.79%
BAJAJ-AUTO	9740.00	-33.50	-0.34%	3.50	344	10187	4.39%	7612	27.96%	7.61%	21.48%
BAJAJFINSV	1822.10	-16.80	-0.91%	9.04	166	2195	16.99%	1597	14.10%	6.54%	-10.48%
BAJFINANCE	916.15	7.90	0.87%	61.84	565	1103	16.90%	788	16.28%	10.31%	-0.01%
BEL	457.70	-5.05	-1.09%	99.13	456	473	3.33%	291	57.20%	7.42%	55.07%
BHARTIARTL	1842.00	-4.90	-0.27%	92.44	1711	2175	15.29%	1747	5.44%	-0.22%	-2.49%
CIPLA	1228.80	-12.00	-0.97%	11.58	143	1673	26.55%	1166	5.41%	-2.20%	-18.90%
COALINDIA	441.75	3.00	0.68%	80.90	356	476	7.20%	369	19.83%	-5.64%	10.76%
DRREDDY	1230.90	-4.80	-0.39%	16.05	198	1380	10.78%	1129	8.99%	-5.24%	5.78%
EICHERMOT	7233.50	44.00	0.61%	6.95	502	8230	12.11%	5220	38.59%	4.70%	27.38%
ETERNAL	253.53	0.92	0.36%	392.83	998	368	31.19%	213	19.25%	9.14%	9.47%
GRASIM	2752.00	31.50	1.16%	7.03	193	2979	7.62%	2503	9.97%	5.19%	-0.32%
HCLTECH	1424.40	-17.90	-1.24%	23.52	337	1780	19.98%	1298	9.76%	6.80%	-0.95%
HDFCBANK	795.20	-4.70	-0.59%	521.45	4156	1021	22.08%	727	9.43%	1.89%	-16.59%
HDFCLIFE	608.75	-7.70	-1.25%	49.81	304	821	25.83%	555	9.66%	-2.39%	-15.46%
HINDALCO	1013.10	-25.90	-2.49%	42.86	436	1049	3.39%	604	67.80%	15.88%	66.22%
HINDUNILVR	2227.20	-13.60	-0.61%	14.61	327	2750	19.01%	2023	10.12%	6.94%	-6.22%
ICICIBANK	1354.30	7.50	0.56%	215.51	2936	1500	9.71%	1188	14.04%	8.74%	-3.73%
INDIGO	4670.00	31.60	0.68%	10.27	478	6233	25.07%	3895	19.89%	12.55%	-12.97%
INFY	1310.00	-8.70	-0.66%	71.72	943	1728	24.19%	1215	7.81%	4.31%	-7.71%
ITC	304.90	-1.90	-0.62%	135.37	414	444	31.36%	287	6.24%	1.65%	-28.64%
JIOFIN	236.60	-7.26	-2.98%	384.03	913	339	30.12%	223	5.96%	-1.13%	-4.00%
JSWSTEEL	1275.00	34.70	2.80%	46.06	584	1285	0.76%	935	36.36%	9.01%	26.59%
KOTAKBANK	380.00	-3.60	-0.94%	111.46	424	460	17.46%	346	9.99%	3.61%	-13.17%
LT	4039.00	-57.10	-1.39%	35.45	1441	4440	9.03%	3162	27.72%	17.59%	24.38%
M&M	3212.50	12.30	0.38%	32.01	1027	3840	16.34%	2602	23.44%	4.77%	19.90%
MARUTI	13420.00	-33.00	-0.25%	3.49	469	17370	22.74%	11289	18.88%	6.50%	14.75%
MAXHEALTH	1008.65	1.00	0.10%	23.01	233	1314	23.26%	903	11.70%	4.54%	-6.99%
NESTLEIND	1285.00	-0.60	-0.05%	11.56	149	1340	4.13%	1085	18.47%	7.66%	6.35%
NTPC	398.35	4.75	1.21%	98.94	394	401	0.62%	316	26.24%	4.57%	9.44%
ONGC	283.15	-0.90	-0.32%	110.57	314	293	3.36%	228	23.94%	6.69%	16.29%
POWERGRID	320.00	1.90	0.60%	109.55	351	323	0.94%	250	28.00%	7.53%	3.56%
RELIANCE	1361.10	-3.90	-0.29%	136.14	1860	1612	15.55%	1228	10.87%	-3.77%	6.79%
SBILIFE	1980.00	9.10	0.46%	10.34	205	2132	7.13%	1549	27.79%	4.38%	23.12%
SBIN	1104.00	23.75	2.20%	311.78	3459	1235	10.59%	756	46.13%	4.35%	38.44%
SHRIRAMFIN	1044.00	7.05	0.68%	46.70	487	1108	5.78%	567	84.29%	11.23%	50.92%
SUNPHARMA	1666.00	-9.50	-0.57%	18.34	307	1851	10.00%	1548	7.62%	-6.25%	-4.88%
TATA CONSUM	1121.00	7.80	0.70%	11.32	127	1221	8.18%	1007	11.30%	6.74%	0.07%
TATASTEEL	212.04	-0.08	-0.04%	249.90	529	216	2.04%	134	58.59%	7.76%	54.62%
TCS	2575.90	-5.60	-0.22%	22.88	591	3631	29.05%	2346	9.79%	7.75%	-21.92%
TECHM	1497.50	-13.90	-0.92%	13.42	203	1854	19.23%	1276	17.37%	8.14%	14.59%
TITAN	4495.00	-30.90	-0.68%	16.47	741	4554	1.30%	3211	39.98%	9.46%	35.09%
TMPV	354.60	-5.50	-1.53%	72.16	257	744	52.34%	294	20.49%	12.89%	-42.95%
TRENT	4235.10	127.40	3.10%	22.28	941	6261	32.36%	3276	29.30%	18.98%	-17.45%
ULTRACEMCO	11860.00	-26.00	-0.22%	3.36	399	13110	9.53%	10325	14.87%	8.47%	-0.34%
WIPRO	202.40	-1.92	-0.94%	279.14	567	273	25.89%	187	8.53%	6.02%	-14.56%

## Disclaimer / Disclosures

### ANALYST CERTIFICATION

I, Mrs. Vaishali Parekh B.com, Research Analyst, author and the name subscribed to this report, hereby certify that all of the views expressed in this research report accurately reflect our views about the subject issuer(s) or securities. We also certify that no part of our compensation was, is, or will be directly or indirectly related to the specific recommendation(s) or view(s) in this report.

Terms & conditions and other disclosures:

Prabhudas Lilladher Pvt. Ltd, Mumbai, India (hereinafter referred to as "PL") is engaged in the business of Stock Broking, Portfolio Manager, Depository Participant and distribution for third party financial products. PL is a subsidiary of Prabhudas Lilladher Advisory Services Pvt Ltd. which has its various subsidiaries engaged in business of commodity broking, investment banking, financial services (margin funding) and distribution of third party financial/other products, details in respect of which are available at [www.plindia.com](http://www.plindia.com)

This document has been prepared by the Research Division of PL and is meant for use by the recipient only as information and is not for circulation. This document is not to be reported or copied or made available to others without prior permission of PL. It should not be considered or taken as an offer to sell or a solicitation to buy or sell any security.

The information contained in this report has been obtained from sources that are considered to be reliable. However, PL has not independently verified the accuracy or completeness of the same. Neither PL nor any of its affiliates, its directors or its employees accepts any responsibility of whatsoever nature for the information, statements and opinion given, made available or expressed herein or for any omission therein.

Recipients of this report should be aware that past performance is not necessarily a guide to future performance and value of investments can go down as well. The suitability or otherwise of any investments will depend upon the recipient's particular circumstances and, in case of doubt, advice should be sought from an independent expert/advisor.

Either PL or its affiliates or its directors or its employees or its representatives or its clients or their relatives may have position(s), make market, act as principal or engage in transactions of securities of companies referred to in this report and they may have used the research material prior to publication.

PL may from time to time solicit or perform investment banking or other services for any company mentioned in this document.

PL is registered as Research Analyst under Securities and Exchange Board of India (Research Analysts) Regulations, 2014 PL submits that no material disciplinary action has been taken on us by any Regulatory Authority impacting Equity Research Analysis activities.

PL or its research analysts or its associates or his relatives do not have any financial interest in the subject company.

PL or its research analysts or its associates or his relatives do not have actual/beneficial ownership of one per cent or more securities of the subject company at the end of the month immediately preceding the date of publication of the research report.

PL or its research analysts or its associates or his relatives do not have any material conflict of interest at the time of publication of the research report.

PL or its associates might have received compensation from the subject company in the past twelve months.

PL or its associates might have managed or co-managed public offering of securities for the subject company in the past twelve months or mandated by the subject company for any other assignment in the past twelve months.

PL or its associates might have received any compensation for investment banking or merchant banking or brokerage services from the subject company in the past twelve months.

PL or its associates might have received any compensation for products or services other than investment banking or merchant banking or brokerage services from the subject company in the past twelve months PL or its associates might have received any compensation or other benefits from the subject company or third party in connection with the research report.

PL encourages independence in research report preparation and strives to minimize conflict in preparation of research report. PL or its analysts did not receive any compensation or other benefits from the subject Company or third party in connection with the preparation of the research report. PL or its Research Analysts do not have any material conflict of interest at the time of publication of this report.

It is confirmed that Mrs. Vaishali Parekh B.com, Research Analyst of this report has not received any compensation from the companies mentioned in the report in the preceding twelve months compensation of our Research Analysts is not based on any specific merchant banking, investment banking or brokerage service transactions.

The Research analysts for this report certifies that all of the views expressed in this report accurately reflect his or her personal views about the subject company or companies and its or their securities, and no part of his or her compensation was, is or will be, directly or indirectly related to specific recommendations or views expressed in this report.

The research analysts for this report has not served as an officer, director or employee of the subject company PL or its research analysts have not engaged in market making activity for the subject company

Our sales people, traders, and other professionals or affiliates may provide oral or written market commentary or trading strategies to our clients that reflect opinions that are contrary to the opinions expressed herein, and our proprietary trading and investing businesses may make investment decisions that are inconsistent with the recommendations expressed herein. In reviewing these materials, you should be aware that any or all of the foregoing, among other things, may give rise to real or potential conflicts of interest.

PL and its associates, their directors and employees may (a) from time to time, have a long or short position in, and buy or sell the securities of the subject company or (b) be engaged in any other transaction involving such securities and earn brokerage or other compensation or act as a market maker in the financial instruments of the subject company or act as an advisor or lender/borrower to the subject company or may have any other potential conflict of interests with respect to any recommendation and other related information and opinions.

**Regd. Office:** 3<sup>rd</sup> Floor, Sadhana House, 570, P. B. Marg, Behind Mahindra Tower, Worli, Mumbai - 400 018, India.