

* Sensex 79273.33 + 753.03

* Nifty 24576.60 + 211.75

* Bank Nifty 57371.45 + 789.10

Market Preview

Nifty surpasses the hurdle of 24350 zone

Nifty witnessed a significant gain to move past the hurdle of 24350 level to ease out the bias and sentiment to some extent and would need to sustain the levels in the coming sessions. BankNifty gained strength to close near the important 200 period MA at 57300 zone expecting for further follow through of the positive move in the coming sessions. The market breadth was positive with the advance decline indicating a ratio of 2:1 at close.

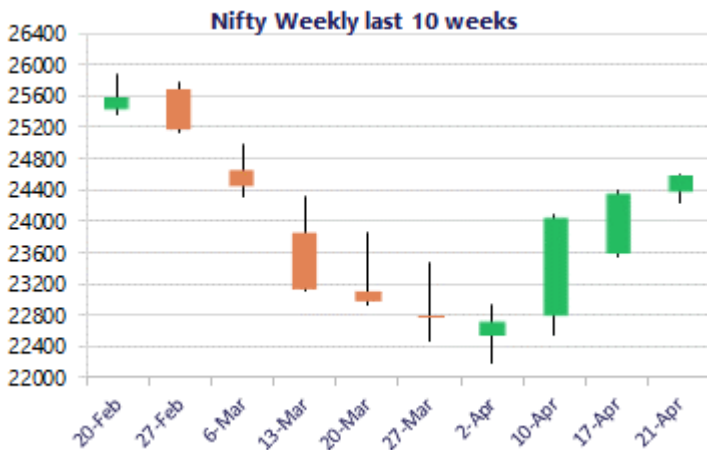
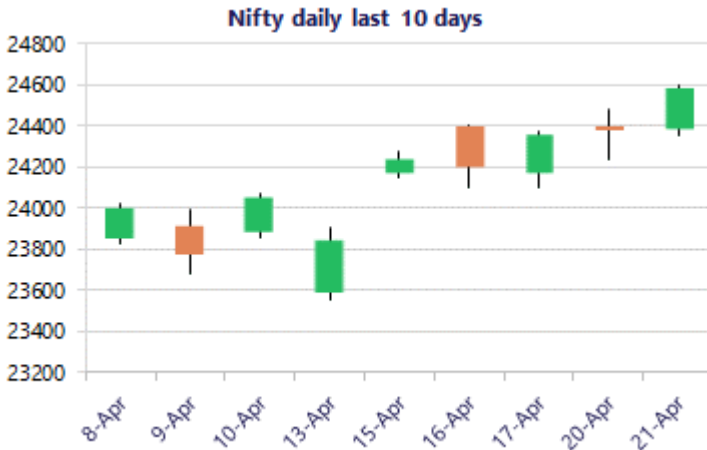
Market Forecast

Nifty daily range 24300 - 24800

Nifty indicated a strong move during the session to come out of the resistance band of 24400 zone and closed above the 24500 level with decent participation witnessed from the broader markets as well to support the index anticipating for further rise in the coming days. The index would now have the 24300 zone as the important near-term support level whereas, on the upside, the 200 period MA at 25000 zone shall be positioned as the major resistance level which needs to be breached to establish strength.

BankNifty witnessed a significant gain moving past the resistance band of 56900 zone and closed near the important 200 period MA at 57300 level with bias slightly improving and would need to sustain above the 57000 zone in the coming sessions to establish conviction and clarity. The index would have the near-term support at 55800 zone which needs to be sustained whereas the 100 period MA at 58200 level would be the near-term resistance which needs to be breached above.

The support for the day is seen at 24300 levels, while the resistance is seen at 24800 levels. BankNifty would have the daily range of 56300-58200 levels.

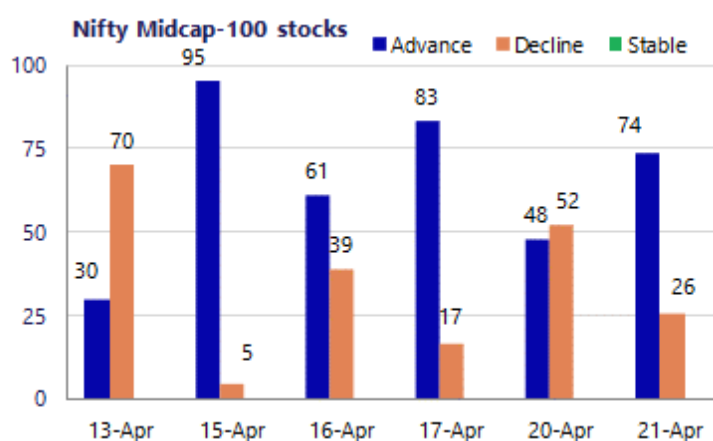
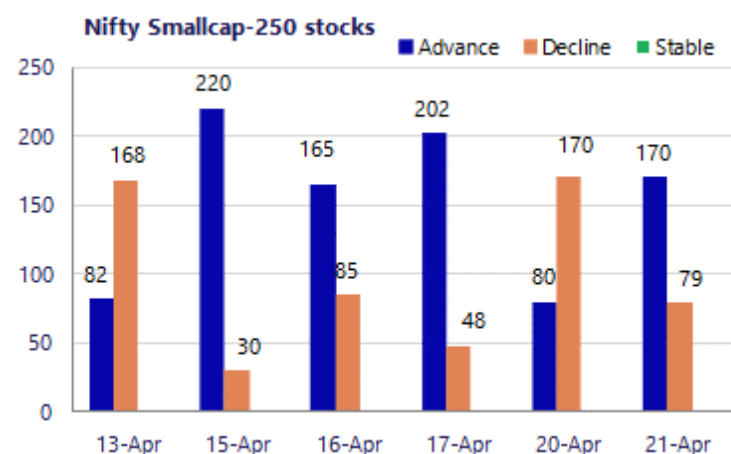


*Blue candle → Close rate > Open rate * Red candle → Close rate < Open rate

Sensex	Period	Closing	% Chng	Trend	Reversal	2 Sup	1 Sup	Pivot	1 Res	2 Res
Nifty	Daily	24576.60	0.87%	13	24339.15	24264	24420	24511	24667	24758
	Weekly	24353.55	1.26%	2	22464.50	23258	23806	24103	24651	24949
	Monthly	22331.40	-11.31%	-3	26623.20	20499	21415	23202	24118	25905
Bank Nifty	Daily	57371.45	1.39%	13	56636.30	56415	56893	57175	57653	57935
	Weekly	56565.70	1.17%	2	52374.40	53441	55003	55919	57481	58397
	Monthly	50275.35	-16.94%	-1	64512.75	43464	46870	53524	56929	63583
Sensex	Daily	79273.33	0.96%	13	78452.35	78210	78742	79054	79586	79899
	Weekly	78493.54	1.22%	2	71897.65	74835	76664	77697	79526	80559
	Monthly	71947.55	-11.49%	-3	85936.10	66196	69072	74852	77728	83509

Gainers - Losers (Nifty 500 Stocks)

Gainers				Losers			
Company Name	Last Price	% Gain	Volume	Company Name	Last Price	% Loss	Volume
Aadhar Housing	494.65	2.93%	895887	ABSL AMC	1,037.85	-2.70%	427668
AAVAS Financier	1,399.80	3.25%	255609	Apar Ind	11714	-2.20%	139779
APTUS VALUE	257.38	5.02%	5390307	Aegis Logistics	727.30	-1.78%	306291
AU Small Financ	1,037.90	4.03%	4152881	APL Apollo	2,106.60	-1.74%	593678
Bank of Mah	80.18	6.14%	152921266	Amber Enterpris	7,858.50	-1.53%	268364
Billionbrains G	214.01	9.13%	288814379	Acutaas Chem	2374.4	-1.51%	246742
Birlasoft	394.40	3.35%	2457268	Allied Blenders	565.15	-1.44%	234360



Nifty Daily chart with RSI indicator



BankNifty Daily chart with RSI indicator



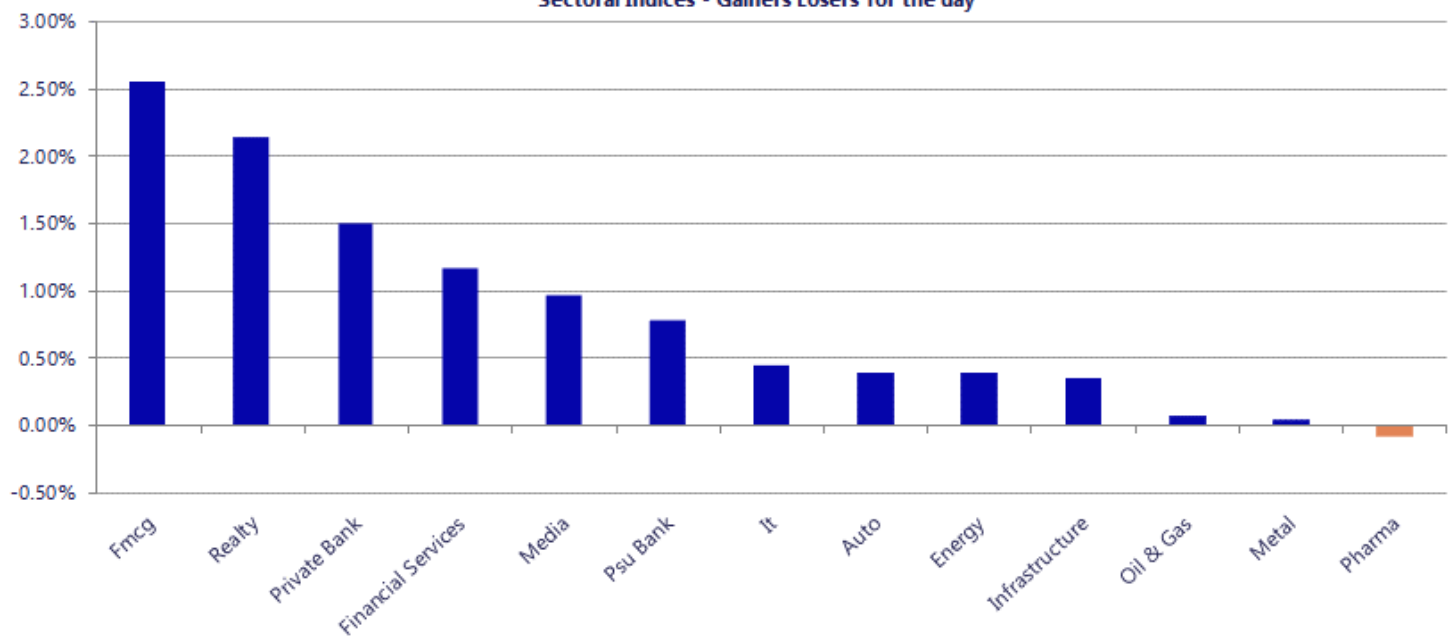
Breakouts - Cross above 200 DMA			
Company Name	LCP	Change %	200 DMA
Vdeal System	193	5.63	182.72
Keynote Finance	293.2	5.35	278.3
Jay Jalaram	145.95	4.33	139.89
Ishan Dyes	64.98	4.15	62.39
Welspun India	132.57	4.01	127.46
IIFL Capital	330	3.97	317.39
Effwa Infra & R	230.4	3.96	221.63
Ideaforge Tech	483.9	3.43	467.84
IOL Chemicals	91.23	3.17	88.43
Niva Bupa Healt	80.68	3.07	78.28
Skipper	465.2	2.60	453.42
LIC Housing Fin	565.15	2.31	552.38
Bhagiradh Chem	249.53	2.30	243.93
Prime Sec	287.65	2.23	281.37
Sundaram-Clayto	1527.8	2.10	1496.33
TATA Cons. Prod	1142	1.57	1124.31
Fusion Finance	176.28	1.51	173.65
Ginni Filaments	42.98	1.49	42.35

* Stocks crossing above its Simple Moving Average (200DMA)

Breakdown - Cross below 200 DMA			
Company Name	LCP	Change %	200 DMA
Pashupati Cotsp	76.7	-4.09	79.97
Panache Digilif	311.65	-2.64	320.09
RNFI Services	299.55	-2.58	307.47
Oracle Fin Serv	7931	-1.46	8048.29
Industrial Inv	161.39	-1.37	163.63
TPL Plastech	69.14	-1.33	70.07
Hexa Tradex	167.69	-1.30	169.9
JK Paper	360.9	-1.20	365.28
DIC India	537.2	-0.74	541.23
Indbank Merchan	34.9	-0.74	35.16
Primo Chemicals	23.24	-0.73	23.41
Somany Ceramics	444.95	-0.72	448.19
SBI Life Insura	1911.6	-0.57	1922.59
Tainwala Chem	199.41	-0.45	200.32
Eldeco Housing	831.3	-0.41	834.7
Sanofi Consumer	4684.5	-0.27	4697.02
Rockingdeals	200	-0.22	200.45
Techno Electric	1251.3	-0.16	1253.26

* Stocks crossing below its Simple Moving Average (200DMA)

Sectoral Indices - Gainers Losers for the day



Nifty 50 Stocks - Summary Details											
Symbol	LTP	Chng	% Chng	Volume (lacs)	Turnover (crs.)	52w High	Diff with 52w H	52w Low	Diff with 52w L	365 days % chng	30 days % chng
NIFTY 50	24576.60	211.75	0.87%	4258.27	37316	26373	6.81%	22183	10.79%	6.33%	1.87%
ADANIENT	2230.00	0.40	0.02%	18.18	406	2617	14.77%	1753	27.21%	15.72%	-5.97%
ADANIPTS	1598.00	19.60	1.24%	42.77	682	1612	0.86%	1181	35.29%	17.04%	28.55%
APOLLOHOSP	7740.00	83.00	1.08%	3.13	242	8100	4.44%	6678	15.91%	5.10%	8.37%
ASIANPAINT	2545.00	28.20	1.12%	16.82	429	2986	14.76%	2115	20.33%	15.92%	4.09%
AXISBANK	1375.50	20.80	1.54%	51.45	707	1418	3.02%	1043	31.94%	14.25%	12.47%
BAJAJ-AUTO	9800.00	-3.00	-0.03%	2.91	286	10187	3.80%	7612	28.74%	8.28%	18.82%
BAJAJFINSV	1850.10	19.50	1.07%	9.52	176	2195	15.71%	1597	15.85%	8.17%	-12.05%
BAJFINANCE	938.75	21.00	2.29%	67.14	628	1103	14.85%	788	19.15%	13.03%	1.23%
BEL	451.50	-6.05	-1.32%	134.92	613	473	4.64%	294	53.73%	5.96%	50.53%
BHARTIARTL	1858.70	12.60	0.68%	104.85	1950	2175	14.52%	1747	6.40%	0.68%	-1.31%
CIPLA	1233.80	4.30	0.35%	14.28	176	1673	26.25%	1166	5.84%	-1.80%	-18.35%
COALINDIA	443.05	1.30	0.29%	53.37	237	476	6.92%	369	20.18%	-5.36%	10.62%
DRREDDY	1220.90	-11.70	-0.95%	12.31	150	1380	11.51%	1129	8.10%	-6.01%	3.69%
EICHERMOT	7220.00	-23.00	-0.32%	3.53	257	8230	12.27%	5220	38.33%	4.50%	24.26%
ETERNAL	259.27	4.39	1.72%	290.53	750	368	29.63%	213	21.95%	11.61%	10.69%
GRASIM	2772.10	12.00	0.43%	6.86	191	2979	6.95%	2503	10.77%	5.95%	0.55%
HCLTECH	1439.00	10.70	0.75%	30.91	445	1780	19.16%	1298	10.89%	7.90%	-2.90%
HDFCBANK	812.00	16.55	2.08%	491.36	3975	1021	20.43%	727	11.75%	4.04%	-15.73%
HDFCLIFE	614.50	4.75	0.78%	48.01	293	821	25.13%	555	10.70%	-1.47%	-13.72%
HINDALCO	1021.30	6.05	0.60%	30.02	306	1049	2.61%	604	69.16%	16.82%	64.20%
HINDUNILVR	2320.10	88.60	3.97%	32.17	736	2750	15.63%	2023	14.71%	11.40%	-1.31%
ICICIBANK	1385.60	29.40	2.17%	233.12	3223	1500	7.63%	1188	16.67%	11.26%	-1.72%
INDIGO	4686.10	7.90	0.17%	8.51	400	6233	24.81%	3895	20.30%	12.94%	-14.74%
INFY	1314.50	1.90	0.14%	100.57	1321	1728	23.93%	1215	8.18%	4.67%	-9.41%
ITC	310.15	5.15	1.69%	244.12	749	444	30.18%	287	8.07%	3.40%	-26.65%
JIOFIN	234.90	-2.25	-0.95%	463.45	1090	339	30.63%	223	5.19%	-1.84%	-4.66%
JSWSTEEL	1283.00	8.50	0.67%	21.09	271	1296	1.03%	935	37.22%	9.70%	24.08%
KOTAKBANK	382.35	3.15	0.83%	123.23	470	460	16.95%	346	10.67%	4.25%	-14.71%
LT	4070.00	19.00	0.47%	24.27	989	4440	8.33%	3225	26.20%	18.49%	24.07%
M&M	3247.80	26.20	0.81%	19.72	640	3840	15.42%	2666	21.83%	5.93%	17.50%
MARUTI	13455.00	5.00	0.04%	2.93	395	17370	22.54%	11289	19.19%	6.78%	14.56%
MAXHEALTH	1015.00	3.65	0.36%	13.22	135	1314	22.77%	903	12.40%	5.20%	-5.41%
NESTLEIND	1394.90	108.50	8.43%	95.87	1295	1396	0.08%	1085	28.60%	16.86%	16.27%
NTPC	396.25	-1.75	-0.44%	94.94	379	403	1.60%	316	25.57%	4.02%	8.70%
ONGC	283.20	-0.15	-0.05%	136.46	387	293	3.34%	228	23.97%	6.71%	13.38%
POWERGRID	319.20	-0.50	-0.16%	83.42	267	323	1.19%	250	27.68%	7.26%	-0.25%
RELIANCE	1354.90	-8.40	-0.62%	272.94	3703	1612	15.94%	1267	6.94%	-4.21%	4.59%
SBILIFE	1914.00	-68.50	-3.46%	51.54	985	2132	10.23%	1595	19.98%	0.90%	17.53%
SBIN	1111.70	3.85	0.35%	169.64	1885	1235	9.96%	756	47.15%	5.08%	36.12%
SHRIRAMFIN	1045.00	-0.15	-0.01%	56.99	597	1108	5.69%	567	84.47%	11.34%	48.65%
SUNPHARMA	1666.20	-2.40	-0.14%	36.31	606	1851	9.99%	1548	7.64%	-6.24%	-4.51%
TATACONSUM	1145.50	25.10	2.24%	10.72	122	1221	6.18%	1007	13.73%	9.07%	2.19%
TATASTEEL	211.60	-0.12	-0.06%	174.27	370	216	2.24%	137	54.40%	7.54%	52.03%
TCS	2609.90	30.30	1.17%	27.20	706	3631	28.11%	2346	11.24%	9.17%	-21.43%
TECHM	1499.00	-5.40	-0.36%	20.02	300	1854	19.15%	1303	15.04%	8.25%	9.14%
TITAN	4484.00	-29.00	-0.64%	6.56	295	4554	1.54%	3246	38.16%	9.19%	34.41%
TMPV	356.00	0.30	0.08%	59.22	211	744	52.15%	294	20.97%	13.34%	-43.50%
TRENT	4405.10	162.30	3.83%	24.38	1066	6261	29.64%	3276	34.49%	23.75%	-17.82%
ULTRACEMCO	12025.00	108.00	0.91%	3.20	383	13110	8.28%	10325	16.46%	9.98%	0.76%
WIPRO	204.98	2.50	1.23%	215.31	440	273	24.94%	187	9.91%	7.38%	-14.04%

Disclaimer / Disclosures

ANALYST CERTIFICATION

I, Mrs. Vaishali Parekh B.com, Research Analyst, author and the name subscribed to this report, hereby certify that all of the views expressed in this research report accurately reflect our views about the subject issuer(s) or securities. We also certify that no part of our compensation was, is, or will be directly or indirectly related to the specific recommendation(s) or view(s) in this report.

Terms & conditions and other disclosures:

Prabhudas Lilladher Pvt. Ltd, Mumbai, India (hereinafter referred to as "PL") is engaged in the business of Stock Broking, Portfolio Manager, Depository Participant and distribution for third party financial products. PL is a subsidiary of Prabhudas Lilladher Advisory Services Pvt Ltd. which has its various subsidiaries engaged in business of commodity broking, investment banking, financial services (margin funding) and distribution of third party financial/other products, details in respect of which are available at www.plindia.com

This document has been prepared by the Research Division of PL and is meant for use by the recipient only as information and is not for circulation. This document is not to be reported or copied or made available to others without prior permission of PL. It should not be considered or taken as an offer to sell or a solicitation to buy or sell any security.

The information contained in this report has been obtained from sources that are considered to be reliable. However, PL has not independently verified the accuracy or completeness of the same. Neither PL nor any of its affiliates, its directors or its employees accepts any responsibility of whatsoever nature for the information, statements and opinion given, made available or expressed herein or for any omission therein.

Recipients of this report should be aware that past performance is not necessarily a guide to future performance and value of investments can go down as well. The suitability or otherwise of any investments will depend upon the recipient's particular circumstances and, in case of doubt, advice should be sought from an independent expert/advisor.

Either PL or its affiliates or its directors or its employees or its representatives or its clients or their relatives may have position(s), make market, act as principal or engage in transactions of securities of companies referred to in this report and they may have used the research material prior to publication.

PL may from time to time solicit or perform investment banking or other services for any company mentioned in this document.

PL is registered as Research Analyst under Securities and Exchange Board of India (Research Analysts) Regulations, 2014 PL submits that no material disciplinary action has been taken on us by any Regulatory Authority impacting Equity Research Analysis activities.

PL or its research analysts or its associates or his relatives do not have any financial interest in the subject company.

PL or its research analysts or its associates or his relatives do not have actual/beneficial ownership of one per cent or more securities of the subject company at the end of the month immediately preceding the date of publication of the research report.

PL or its research analysts or its associates or his relatives do not have any material conflict of interest at the time of publication of the research report.

PL or its associates might have received compensation from the subject company in the past twelve months.

PL or its associates might have managed or co-managed public offering of securities for the subject company in the past twelve months or mandated by the subject company for any other assignment in the past twelve months.

PL or its associates might have received any compensation for investment banking or merchant banking or brokerage services from the subject company in the past twelve months.

PL or its associates might have received any compensation for products or services other than investment banking or merchant banking or brokerage services from the subject company in the past twelve months PL or its associates might have received any compensation or other benefits from the subject company or third party in connection with the research report.

PL encourages independence in research report preparation and strives to minimize conflict in preparation of research report. PL or its analysts did not receive any compensation or other benefits from the subject Company or third party in connection with the preparation of the research report. PL or its Research Analysts do not have any material conflict of interest at the time of publication of this report.

It is confirmed that Mrs. Vaishali Parekh B.com, Research Analyst of this report has not received any compensation from the companies mentioned in the report in the preceding twelve months compensation of our Research Analysts is not based on any specific merchant banking, investment banking or brokerage service transactions.

The Research analysts for this report certifies that all of the views expressed in this report accurately reflect his or her personal views about the subject company or companies and its or their securities, and no part of his or her compensation was, is or will be, directly or indirectly related to specific recommendations or views expressed in this report.

The research analysts for this report has not served as an officer, director or employee of the subject company PL or its research analysts have not engaged in market making activity for the subject company

Our sales people, traders, and other professionals or affiliates may provide oral or written market commentary or trading strategies to our clients that reflect opinions that are contrary to the opinions expressed herein, and our proprietary trading and investing businesses may make investment decisions that are inconsistent with the recommendations expressed herein. In reviewing these materials, you should be aware that any or all of the foregoing, among other things, may give rise to real or potential conflicts of interest.

PL and its associates, their directors and employees may (a) from time to time, have a long or short position in, and buy or sell the securities of the subject company or (b) be engaged in any other transaction involving such securities and earn brokerage or other compensation or act as a market maker in the financial instruments of the subject company or act as an advisor or lender/borrower to the subject company or may have any other potential conflict of interests with respect to any recommendation and other related information and opinions.

Regd. Office: 3rd Floor, Sadhana House, 570, P. B. Marg, Behind Mahindra Tower, Worli, Mumbai - 400 018, India.