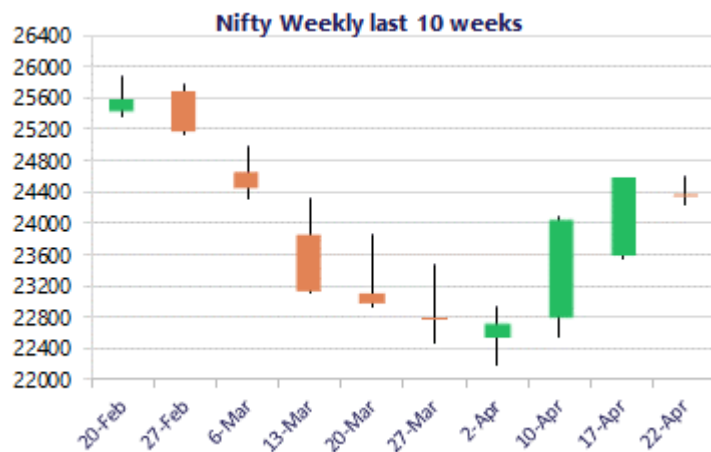
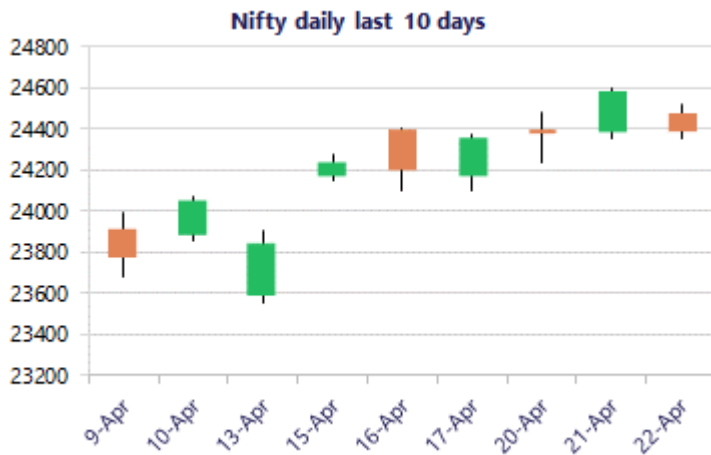


* Sensex 78516.49 -756.84

* Nifty 24378.10 -198.50

* Bank Nifty 57124.45 -247.00



*Blue candle → Close rate > Open rate * Red candle → Close rate < Open rate

Market Preview

Nifty near crucial zone of 24300 level

Nifty succumbed to profit booking in the morning session to slide down from 24500 zone to close near the 24380 level with bias maintained with a cautious approach once again. BankNifty having the hurdle near the 200 period MA at 57300 zone ended near the 57100 level with sentiment once again maintained with a cautious approach. The market breadth was slightly positive with the advance decline indicating a ratio of 4:3 at close.

Market Forecast

Nifty daily range 24100 - 24600

Nifty finding resistance near the 24500-zone slipped down with profit booking witnessed amid geo-political tensions once again hanging on with no clarity and overall, the indices are precariously place with a cautious approach. The broader markets however, with some select sectors are maintaining their positive bias and as mentioned earlier, the index would have the crucial zone near the 24300 level which needs to be sustained failing which there can be further downward movement in the coming sessions.

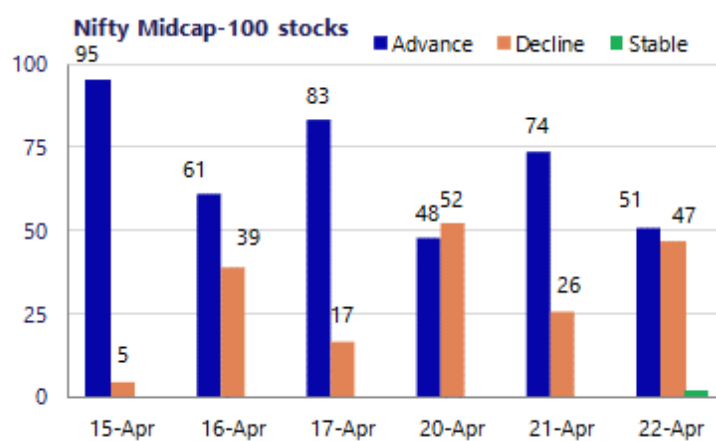
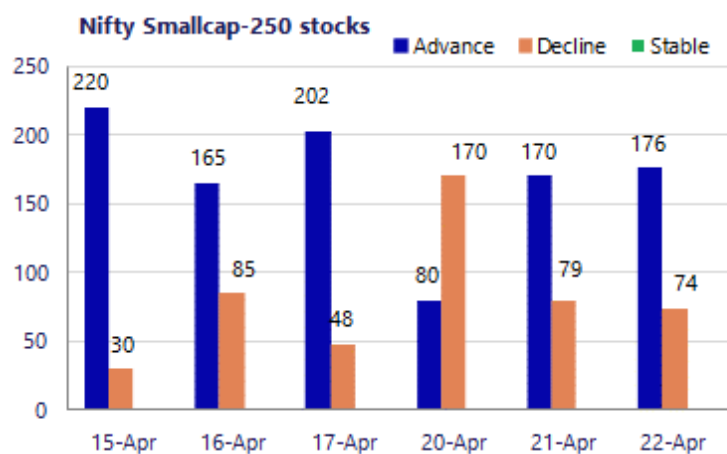
BankNifty once again witnessed resistance near the 57450 zone and slipped down with profit booking seen to close near the 57000 zone with bias maintained with a cautious approach as of now. The index would have the near-term support at 55800 zone which needs to be sustained whereas the 100 period MA at 58200 level would be the near-term resistance which needs to be breached above.

The support for the day is seen at 24100 levels, while the resistance is seen at 24600 levels. BankNifty would have the daily range of 56300-58000 levels.

Sensex	Period	Closing	% Chng	Trend	Reversal	2 Sup	1 Sup	Pivot	1 Res	2 Res
Nifty	Daily	24378.10	-0.81%	14	24361.25	24253	24315	24416	24478	24579
	Weekly	24353.55	1.26%	2	22464.50	23258	23806	24103	24651	24949
	Monthly	22331.40	-11.31%	-3	26623.20	20499	21415	23202	24118	25905
Bank Nifty	Daily	57124.45	-0.43%	14	56774.60	56752	56938	57188	57374	57624
	Weekly	56565.70	1.17%	2	52374.40	53441	55003	55919	57481	58397
	Monthly	50275.35	-16.94%	-1	64512.75	43464	46870	53524	56929	63583
Sensex	Daily	78516.49	-0.95%	14	78511.55	78075	78296	78663	78884	79252
	Weekly	78493.54	1.22%	2	71897.65	74835	76664	77697	79526	80559
	Monthly	71947.55	-11.49%	-3	85936.10	66196	69072	74852	77728	83509

Gainers - Losers (Nifty 500 Stocks)

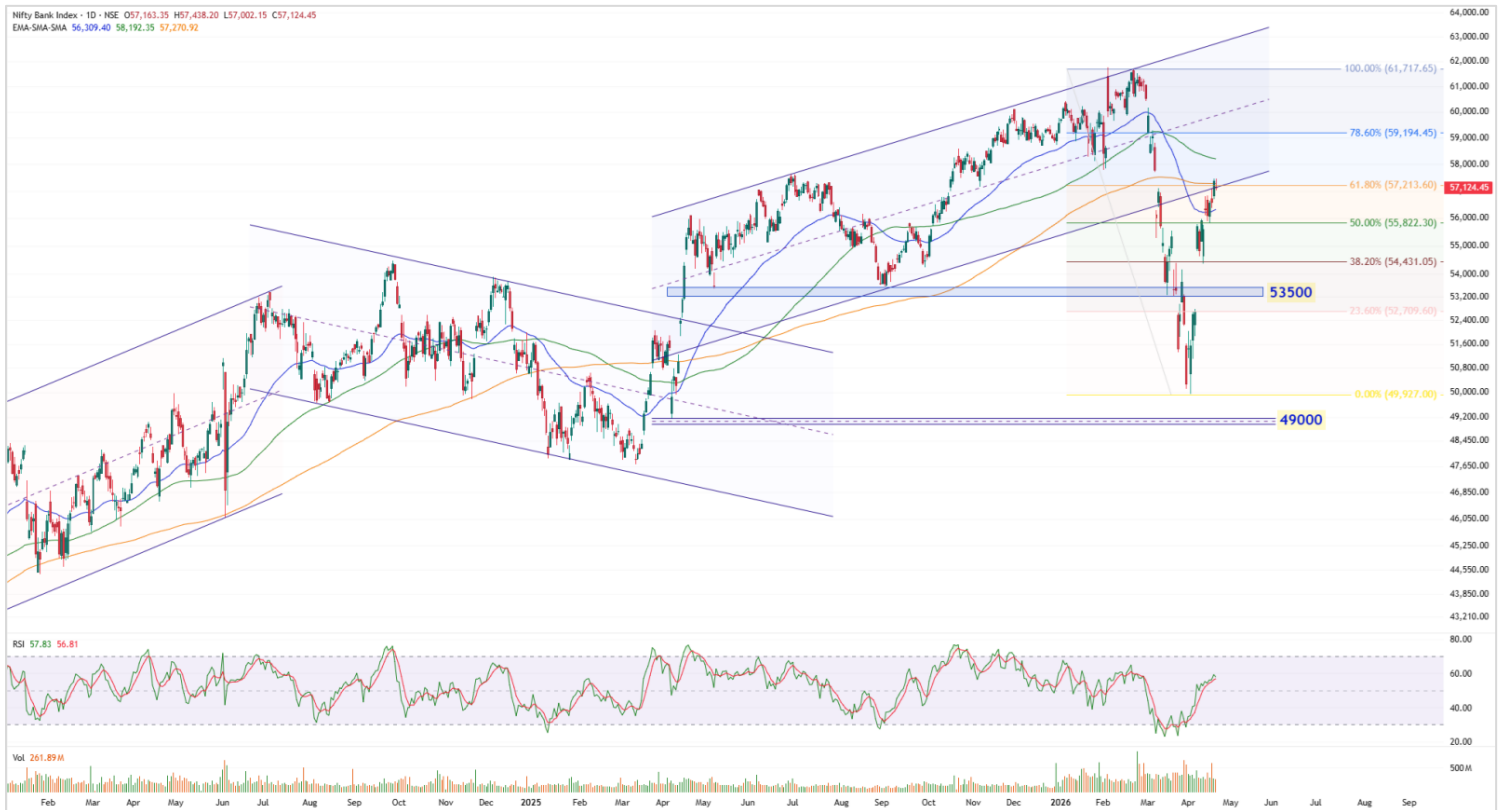
Gainers				Losers			
Company Name	Last Price	% Gain	Volume	Company Name	Last Price	% Loss	Volume
Amara Raja	898.7	16.14%	35117495	360 ONE WAM	1,054.90	-4.82%	5902427
Adani Energy	1,368.10	8.12%	6546630	Aditya Infotech	2183.9	-3.28%	390816
Balrampur Chini	541.55	6.43%	2395122	Allied Blenders	553.10	-2.13%	239302
Adani Power	215.65	6.24%	117134151	Afcons Infra	329.50	-1.92%	364243
AWL Agri	199.60	5.89%	12326782	Aegis Logistics	713.50	-1.90%	469982
ABB India	7,587.00	4.58%	1729181	Apollo Tyres	434	-1.80%	552185
Aarti Ind	470.40	4.26%	1546536	ABSL AMC	1019.95	-1.72%	244211



Nifty Daily chart with RSI indicator



BankNifty Daily chart with RSI indicator

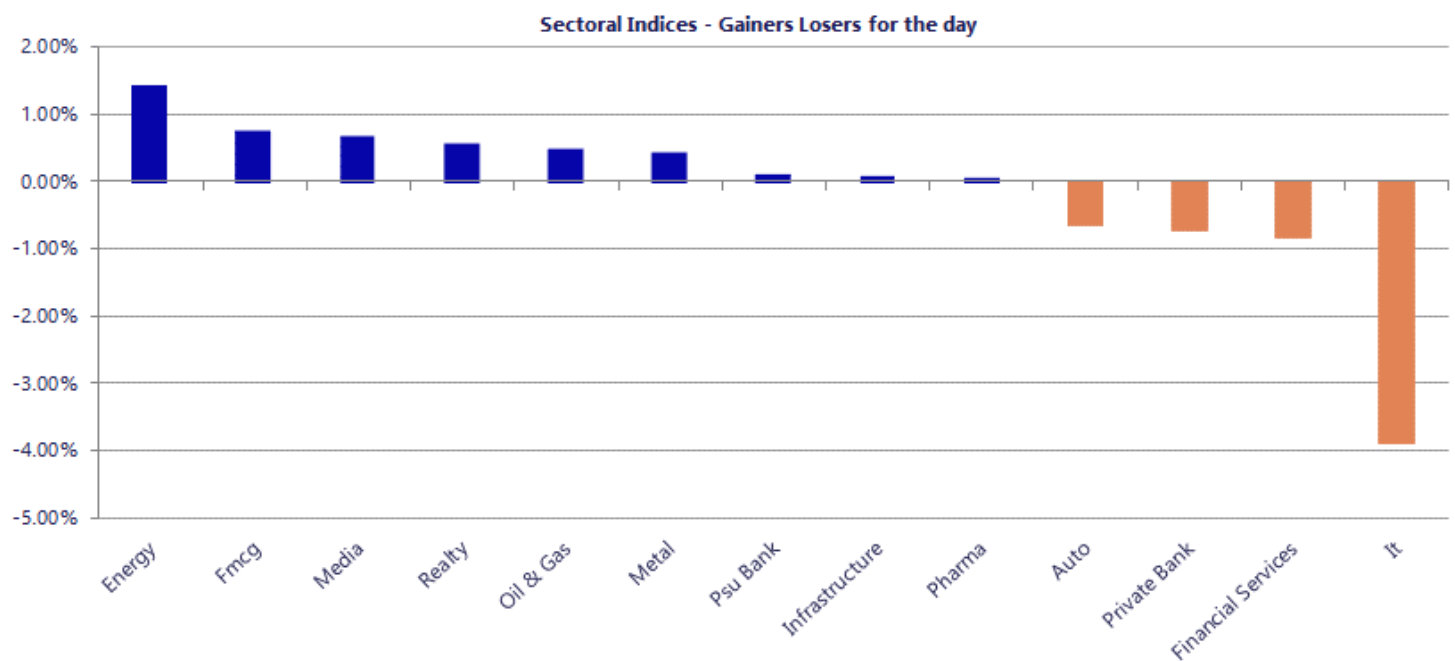


Breakouts - Cross above 200 DMA			
Company Name	LCP	Change %	200 DMA
Industrial Inv	183.95	12.45	163.59
Jullundur Motor	91.78	6.58	86.11
Vilas Transcore	478.2	6.54	448.86
JK Paper	384.3	5.22	365.23
Jana SFB	451.45	4.10	433.65
HBL Eng	816.4	3.85	786.12
KDDL	2551.4	3.51	2464.8
Tainwala Chem	206.98	3.38	200.22
Uttam Sugar	252.43	3.33	244.3
Deepak Nitrite	1745.5	3.29	1689.86
Somany Ceramics	462.2	3.27	447.55
SRG Housing Fin	294.81	2.93	286.41
Kabra Extrusion	253.67	2.77	246.83
Ethos	2717.9	2.60	2649.05
Lloyds Steels	59.07	2.48	57.64
Pashupati Cotsp	81.95	2.41	80.02
Nikita Greentec	122	2.37	119.18
Premier Explo	535.35	2.36	523.01

* Stocks crossing above its Simple Moving Average (200DMA)

Breakdown - Cross below 200 DMA			
Company Name	LCP	Change %	200 DMA
GSM Foils	192.1	-7.52	207.71
SPL Industries	34.79	-1.97	35.49
Gokaldas Export	749.7	-1.79	763.38
Birlasoft	387.85	-1.27	392.85
Windsor	284.5	-0.98	287.31
ICICI Bank	1367.6	-0.90	1379.96
Navneet	146.66	-0.89	147.97
Omax Autos	113.41	-0.66	114.16
NK Industries	66.33	-0.63	66.75
Ginni Filaments	42.09	-0.61	42.35
Senco Gold	329.9	-0.56	331.75
Bannariamman	3619	-0.52	3638.04
Elgi Rubber	52.8	-0.51	53.07
Navkar Corp	107.03	-0.49	107.56
Umiya Buildcon	85.33	-0.43	85.7
Pansari Develop	275.1	-0.42	276.25
Bharat Bijlee	2808.8	-0.40	2820.18
Max Financial	1627.4	-0.37	1633.46

* Stocks crossing below its Simple Moving Average (200DMA)



Nifty 50 Stocks - Summary Details											
Symbol	LTP	Chng	% Chng	Volume (lacs)	Turnover (crs.)	52w High	Diff with 52w H	52w Low	Diff with 52w L	365 days % chng	30 days % chng
NIFTY 50	24378.10	-198.50	-0.81%	4404.74	38976	26373	7.56%	22183	9.90%	5.47%	0.87%
ADANIENT	2258.00	32.00	1.44%	35.17	791	2617	13.70%	1753	28.81%	17.17%	-4.90%
ADANIPTS	1589.70	-4.40	-0.28%	19.18	305	1612	1.38%	1181	34.58%	16.43%	28.91%
APOLLOHOSP	7628.50	-115.50	-1.49%	6.08	469	8100	5.82%	6678	14.24%	3.58%	7.62%
ASIANPAINT	2563.20	19.60	0.77%	11.27	288	2986	14.15%	2115	21.19%	16.75%	5.39%
AXISBANK	1375.00	-2.70	-0.20%	39.98	553	1418	3.05%	1043	31.89%	14.21%	13.00%
BAJAJ-AUTO	9600.00	-193.00	-1.97%	3.02	293	10187	5.76%	7612	26.12%	6.07%	17.92%
BAJAJFINSV	1841.90	-9.50	-0.51%	7.40	137	2195	16.09%	1597	15.34%	7.69%	-11.32%
BAJFINANCE	934.90	-3.95	-0.42%	57.59	539	1103	15.20%	788	18.66%	12.56%	0.96%
BEL	448.95	-2.55	-0.56%	115.37	517	473	5.17%	294	52.86%	5.36%	48.00%
BHARTIARTL	1831.00	-24.00	-1.29%	56.87	1045	2175	15.80%	1747	4.81%	-0.82%	-1.14%
CIPLA	1239.80	7.30	0.59%	11.72	145	1673	25.89%	1166	6.36%	-1.32%	-18.87%
COALINDIA	444.35	1.20	0.27%	69.90	311	476	6.65%	369	20.53%	-5.08%	11.48%
DRREDDY	1217.40	-3.20	-0.26%	15.73	192	1380	11.76%	1129	7.79%	-6.27%	3.61%
EICHERMOT	7220.00	-20.50	-0.28%	4.98	359	8230	12.27%	5220	38.33%	4.50%	24.83%
ETERNAL	262.25	2.77	1.07%	457.10	1195	368	28.82%	213	23.35%	12.90%	10.44%
GRASIM	2774.00	-3.70	-0.13%	9.24	257	2979	6.88%	2503	10.85%	6.03%	0.89%
HCLTECH	1286.40	-154.80	-10.74%	330.65	4313	1780	27.73%	1281	0.42%	-3.55%	-13.08%
HDFCBANK	799.40	-12.35	-1.52%	238.65	1919	1021	21.67%	727	10.01%	2.43%	-18.50%
HDFCLIFE	604.20	-10.00	-1.63%	39.94	242	821	26.38%	555	8.85%	-3.12%	-15.21%
HINDALCO	1038.55	16.90	1.65%	44.74	463	1049	0.97%	604	72.02%	18.79%	67.48%
HINDUNILVR	2366.00	55.30	2.39%	55.58	1318	2750	13.96%	2023	16.98%	13.60%	-1.36%
ICICIBANK	1367.80	-20.60	-1.48%	136.13	1865	1500	8.81%	1188	15.17%	9.83%	-3.44%
INDIGO	4655.00	-38.10	-0.81%	10.83	505	6233	25.31%	3895	19.51%	12.19%	-15.88%
INFY	1268.80	-44.40	-3.38%	200.86	2550	1728	26.57%	1215	4.42%	1.03%	-10.82%
ITC	305.50	-4.15	-1.34%	244.99	751	444	31.22%	287	6.45%	1.85%	-29.54%
JIOFIN	238.44	3.69	1.57%	402.46	960	339	29.58%	223	6.78%	-0.36%	-4.84%
JSWSTEEL	1265.30	-14.30	-1.12%	28.83	365	1296	2.40%	935	35.33%	8.18%	21.17%
KOTAKBANK	376.95	-5.20	-1.36%	144.71	548	460	18.12%	346	9.10%	2.78%	-16.93%
LT	4016.00	-59.40	-1.46%	21.78	878	4440	9.55%	3225	24.52%	16.92%	23.27%
M&M	3150.00	-97.30	-3.00%	30.96	988	3840	17.97%	2666	18.16%	2.74%	11.82%
MARUTI	13379.00	-82.00	-0.61%	4.35	582	17370	22.98%	11289	18.51%	6.17%	14.02%
MAXHEALTH	1001.00	-19.25	-1.89%	14.11	143	1314	23.84%	903	10.85%	3.75%	-11.31%
NESTLEIND	1394.10	14.20	1.03%	77.23	1089	1425	2.18%	1085	28.52%	16.80%	15.82%
NTPC	405.15	8.95	2.26%	164.11	663	407	0.52%	316	28.39%	6.35%	12.46%
ONGC	283.00	-0.10	-0.04%	73.95	210	293	3.41%	228	23.88%	6.63%	14.21%
POWERGRID	319.85	0.50	0.16%	71.10	227	323	0.99%	250	27.94%	7.48%	2.34%
RELIANCE	1362.00	8.70	0.64%	95.25	1296	1612	15.50%	1267	7.50%	-3.70%	5.48%
SBILIFE	1885.00	-26.60	-1.39%	40.44	765	2132	11.59%	1595	18.16%	-0.63%	16.43%
SBIN	1103.20	-8.65	-0.78%	124.11	1372	1235	10.65%	756	46.02%	4.27%	34.14%
SHRIRAMFIN	1041.05	-4.25	-0.41%	44.04	459	1108	6.04%	567	83.77%	10.92%	47.98%
SUNPHARMA	1668.90	3.70	0.22%	21.69	361	1851	9.85%	1548	7.81%	-6.09%	-4.49%
TATACONSUM	1180.00	38.00	3.33%	42.84	504	1221	3.35%	1007	17.16%	12.36%	3.81%
TATASTEEL	212.60	0.59	0.28%	207.95	442	216	1.78%	137	55.13%	8.04%	53.88%
TCS	2535.30	-75.20	-2.88%	52.31	1331	3631	30.17%	2346	8.06%	6.05%	-23.51%
TECHM	1463.30	-37.50	-2.50%	116.68	1695	1854	21.07%	1303	12.30%	5.67%	6.31%
TITAN	4455.00	-24.70	-0.55%	5.96	266	4554	2.17%	3246	37.27%	8.48%	33.49%
TMPV	362.10	6.20	1.74%	149.93	544	744	51.33%	294	23.04%	15.28%	-42.60%
TRENT	4409.90	19.40	0.44%	25.96	1146	6261	29.57%	3276	34.63%	23.89%	-17.15%
ULTRACEMCO	12140.00	101.00	0.84%	3.12	379	13110	7.40%	10325	17.58%	11.03%	1.51%
WIPRO	204.00	-1.01	-0.49%	217.87	444	273	25.30%	187	9.38%	6.86%	-12.88%

Disclaimer / Disclosures

ANALYST CERTIFICATION

I, Mrs. Vaishali Parekh B.com, Research Analyst, author and the name subscribed to this report, hereby certify that all of the views expressed in this research report accurately reflect our views about the subject issuer(s) or securities. We also certify that no part of our compensation was, is, or will be directly or indirectly related to the specific recommendation(s) or view(s) in this report.

Terms & conditions and other disclosures:

Prabhudas Lilladher Pvt. Ltd, Mumbai, India (hereinafter referred to as "PL") is engaged in the business of Stock Broking, Portfolio Manager, Depository Participant and distribution for third party financial products. PL is a subsidiary of Prabhudas Lilladher Advisory Services Pvt Ltd. which has its various subsidiaries engaged in business of commodity broking, investment banking, financial services (margin funding) and distribution of third party financial/other products, details in respect of which are available at www.plindia.com

This document has been prepared by the Research Division of PL and is meant for use by the recipient only as information and is not for circulation. This document is not to be reported or copied or made available to others without prior permission of PL. It should not be considered or taken as an offer to sell or a solicitation to buy or sell any security.

The information contained in this report has been obtained from sources that are considered to be reliable. However, PL has not independently verified the accuracy or completeness of the same. Neither PL nor any of its affiliates, its directors or its employees accepts any responsibility of whatsoever nature for the information, statements and opinion given, made available or expressed herein or for any omission therein.

Recipients of this report should be aware that past performance is not necessarily a guide to future performance and value of investments can go down as well. The suitability or otherwise of any investments will depend upon the recipient's particular circumstances and, in case of doubt, advice should be sought from an independent expert/advisor.

Either PL or its affiliates or its directors or its employees or its representatives or its clients or their relatives may have position(s), make market, act as principal or engage in transactions of securities of companies referred to in this report and they may have used the research material prior to publication.

PL may from time to time solicit or perform investment banking or other services for any company mentioned in this document.

PL is registered as Research Analyst under Securities and Exchange Board of India (Research Analysts) Regulations, 2014 PL submits that no material disciplinary action has been taken on us by any Regulatory Authority impacting Equity Research Analysis activities.

PL or its research analysts or its associates or his relatives do not have any financial interest in the subject company.

PL or its research analysts or its associates or his relatives do not have actual/beneficial ownership of one per cent or more securities of the subject company at the end of the month immediately preceding the date of publication of the research report.

PL or its research analysts or its associates or his relatives do not have any material conflict of interest at the time of publication of the research report.

PL or its associates might have received compensation from the subject company in the past twelve months.

PL or its associates might have managed or co-managed public offering of securities for the subject company in the past twelve months or mandated by the subject company for any other assignment in the past twelve months.

PL or its associates might have received any compensation for investment banking or merchant banking or brokerage services from the subject company in the past twelve months.

PL or its associates might have received any compensation for products or services other than investment banking or merchant banking or brokerage services from the subject company in the past twelve months PL or its associates might have received any compensation or other benefits from the subject company or third party in connection with the research report.

PL encourages independence in research report preparation and strives to minimize conflict in preparation of research report. PL or its analysts did not receive any compensation or other benefits from the subject Company or third party in connection with the preparation of the research report. PL or its Research Analysts do not have any material conflict of interest at the time of publication of this report.

It is confirmed that Mrs. Vaishali Parekh B.com, Research Analyst of this report has not received any compensation from the companies mentioned in the report in the preceding twelve months compensation of our Research Analysts is not based on any specific merchant banking, investment banking or brokerage service transactions.

The Research analysts for this report certifies that all of the views expressed in this report accurately reflect his or her personal views about the subject company or companies and its or their securities, and no part of his or her compensation was, is or will be, directly or indirectly related to specific recommendations or views expressed in this report.

The research analysts for this report has not served as an officer, director or employee of the subject company PL or its research analysts have not engaged in market making activity for the subject company

Our sales people, traders, and other professionals or affiliates may provide oral or written market commentary or trading strategies to our clients that reflect opinions that are contrary to the opinions expressed herein, and our proprietary trading and investing businesses may make investment decisions that are inconsistent with the recommendations expressed herein. In reviewing these materials, you should be aware that any or all of the foregoing, among other things, may give rise to real or potential conflicts of interest.

PL and its associates, their directors and employees may (a) from time to time, have a long or short position in, and buy or sell the securities of the subject company or (b) be engaged in any other transaction involving such securities and earn brokerage or other compensation or act as a market maker in the financial instruments of the subject company or act as an advisor or lender/borrower to the subject company or may have any other potential conflict of interests with respect to any recommendation and other related information and opinions.

Regd. Office: 3rd Floor, Sadhana House, 570, P. B. Marg, Behind Mahindra Tower, Worli, Mumbai - 400 018, India.