

\* Sensex 77664.00 -852.49

\* Nifty 24173.05 -205.05

\* Bank Nifty 56305.00 -819.45

## Market Preview

### Nifty drags below the crucial 24300 zone

Nifty witnessed profit booking to slide further for the second consecutive session to close below the important support zone of 24300 level. BankNifty slipped heavily to lose more than 800 points to end near the important 50EMA at 56300 level with bias and sentiment turning weak once again. The market breadth was weak with the advance decline indicating a ratio of 1:2 at close.

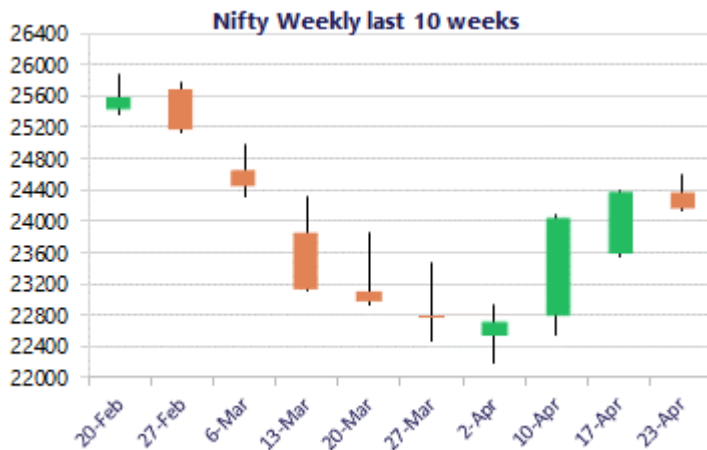
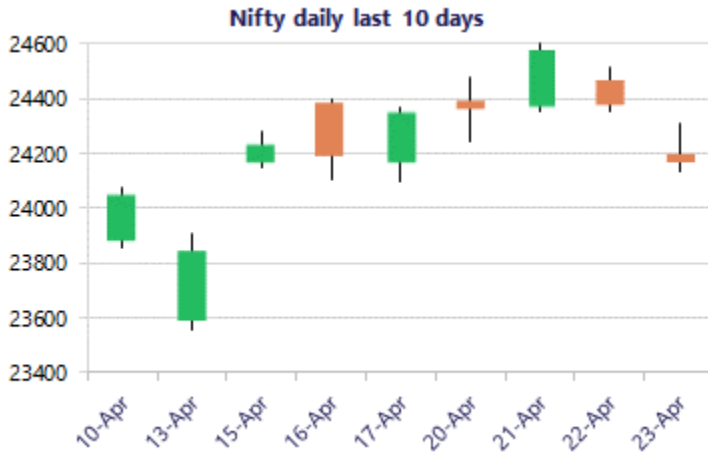
## Market Forecast

### Nifty daily range 23900 - 24400

Nifty after resisting near the 24600 zone, has been sliding down with profit booking seen and has breached below the important of 24300 zone with the bias and sentiment once again precariously placed and has become vulnerable and can anticipate for further downward movement in the coming sessions. The index would have the important support zones at 23500 and 23000 levels which can be retested provided the 24300-24400 zone is not breached above decisively in the coming days.

BankNifty slipped down with heavy profit booking witnessed to arrive near the important 50EMA at 56300 zone with bias turning weak and sentiment once again getting into a very cautious mode for the coming sessions. The important support at 55000 and thereafter, 53500 levels shall be the crucial zone which needs to be sustained in the coming sessions failing which one can expect for further weakening of the trend. On the upside, the 200 period MA at 57300 level would be the important hurdle which needs to be breached above decisively.

The support for the day is seen at 23900 levels, while the resistance is seen at 24400 levels. BankNifty would have the daily range of 55000-57000 levels.

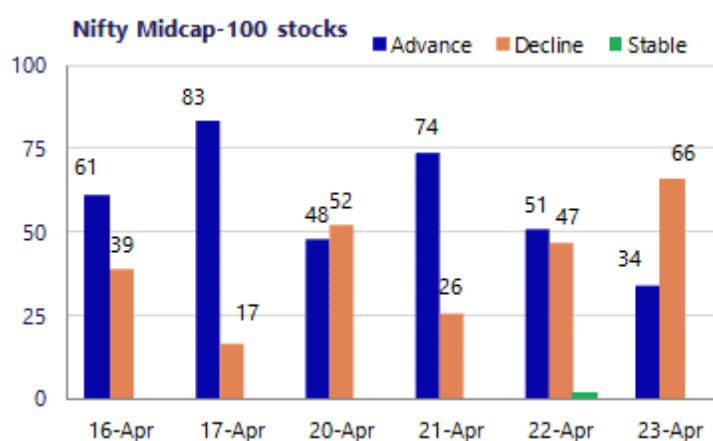
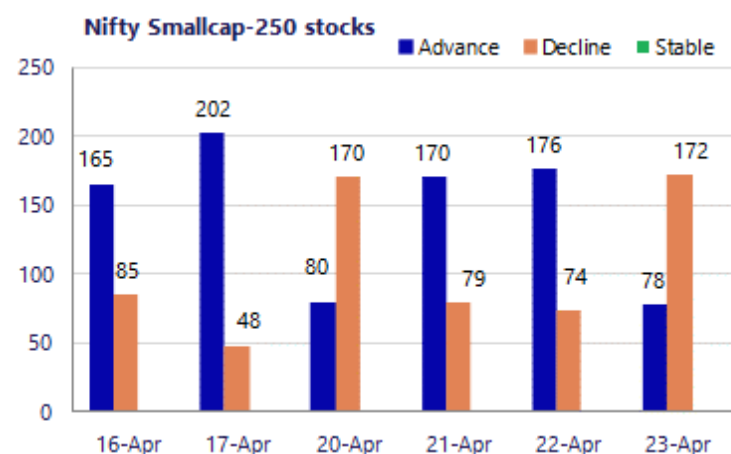


\*Blue candle → Close rate > Open rate \* Red candle → Close rate < Open rate

Sensex	Period	Closing	% Chng	Trend	Reversal	2 Sup	1 Sup	Pivot	1 Res	2 Res
Nifty	Daily	24173.05	-0.84%	-1	24421.70	24031	24102	24206	24277	24381
	Weekly	24353.55	1.26%	2	22464.50	23258	23806	24103	24651	24949
	Monthly	22331.40	-11.31%	-3	26623.20	20499	21415	23202	24118	25905
Bank Nifty	Daily	56305.00	-1.43%	-1	56902.10	55812	56059	56464	56710	57115
	Weekly	56565.70	1.17%	2	52374.40	53441	55003	55919	57481	58397
	Monthly	50275.35	-16.94%	-1	64512.75	43464	46870	53524	56929	63583
Sensex	Daily	77664.00	-1.09%	-1	78692.90	77201	77433	77806	78037	78410
	Weekly	78493.54	1.22%	2	71897.65	74835	76664	77697	79526	80559
	Monthly	71947.55	-11.49%	-3	85936.10	66196	69072	74852	77728	83509

**Gainers - Losers ( Nifty 500 Stocks )**

Gainers				Losers			
Company Name	Last Price	% Gain	Volume	Company Name	Last Price	% Loss	Volume
OneSource Spec	1768.6	9.78%	1726.07	IIFL Finance	420.05	-10.18%	430.11
Dr Reddys Labs	1,331.00	9.37%	1314.74	Union Bank	179.71	-7.39%	183.29
Oracle Fin Serv	8791.5	8.18%	8663.21	Havells India	1,260.30	-6.55%	1269.39
Data Patterns	4,135.10	8.01%	4037.91	CarTrade Tech	1,691.00	-5.24%	1716.6
Piramal Pharma	163.87	6.54%	164.44	Force Motors	20,750.00	-4.69%	20970.36
GE Vernova TD	4,496.40	6.06%	4533.23	APL Apollo	2022.9	-4.67%	2053.12
Welspun Corp	1,204.10	5.70%	1205.43	Ashok Leyland	170.63	-4.66%	172.05



### Nifty Daily chart with RSI indicator



### BankNifty Daily chart with RSI indicator

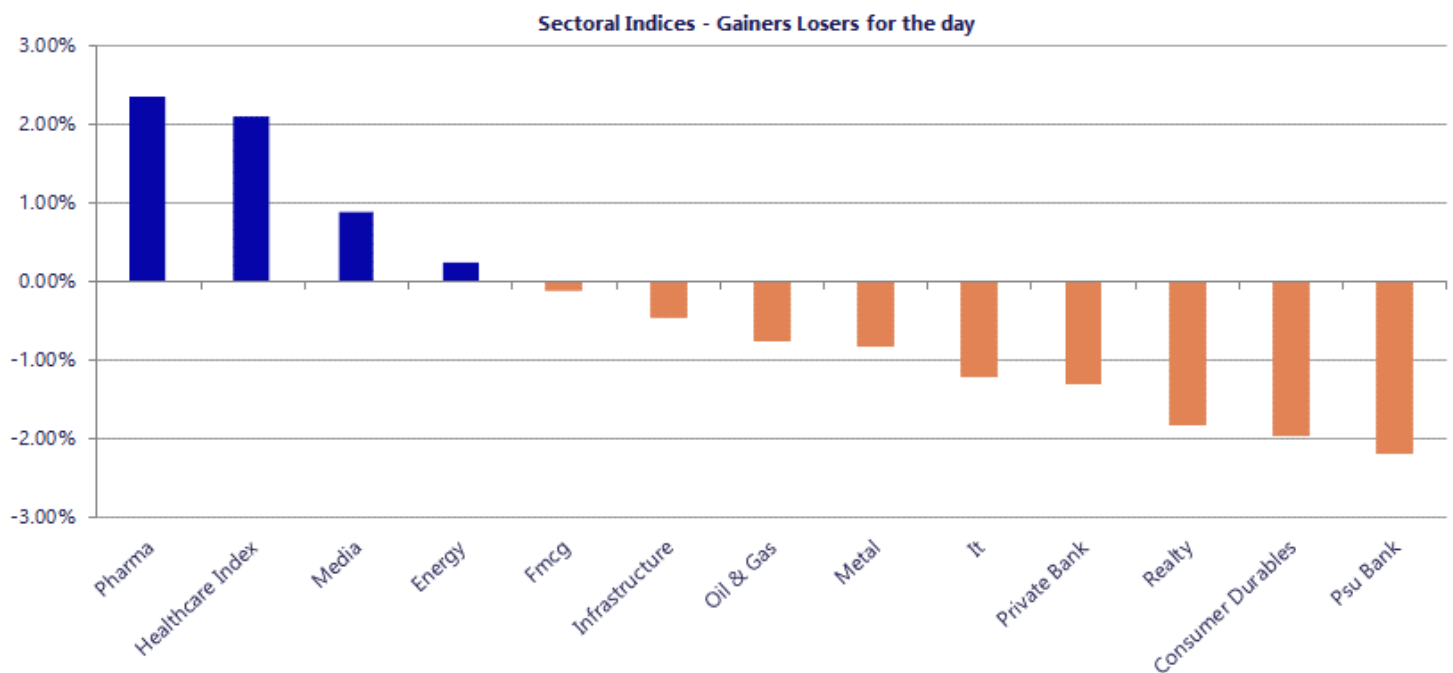


Breakouts - Cross above 200 DMA			
Company Name	LCP	Change %	200 DMA
Digjam	53.91	12.10	48.09
Delta Corp	81.6	11.16	73.41
Pansari Develop	299.9	8.47	276.48
Bharat Bijlee	2990.5	6.09	2818.71
Dr Reddys Labs	1331	5.96	1256.09
OneSource Spec	1768.6	5.20	1681.25
Mask Investment	161.37	4.65	154.2
Ugar Sugar Work	43.35	4.21	41.6
Zodiac Energy	355.83	4.14	341.68
IRM Energy	286.63	3.88	275.93
Ginni Filaments	43.89	3.66	42.34
Marksans Pharma	193.25	3.31	187.05
Websol Energy	106.79	3.15	103.53
Ambey Labs	37.6	3.13	36.46
Shaily Engg	2186.2	2.78	2127.17
Rubfila Intl	77.43	2.50	75.54
Dynamic Cables	370.68	2.31	362.31
Magadh Sugar	527.4	2.29	515.57

\* Stocks crossing above its Simple Moving Average (200DMA)

Breakdown - Cross below 200 DMA			
Company Name	LCP	Change %	200 DMA
Sarla Performan	89.94	-3.71	93.41
Sahasra Electro	266.5	-3.24	275.43
Shriram Propert	82.87	-3.13	85.55
SecMark Consult	117.91	-2.54	120.98
Jeena Sikho	661.75	-2.45	678.34
Kolte-Patil	390.75	-2.21	399.59
Ramdevbaba Solv	105.05	-2.17	107.38
Sanghvi Movers	308.96	-2.17	315.82
ORIENTAL AROMAT	308.36	-2.01	314.67
Solex Energy	1294.15	-1.99	1320.48
JK Tyre & Ind	418.2	-1.98	426.66
Indian Renew	137.52	-1.97	140.28
Nipp NiftyAuto	265.79	-1.92	271
Rajputana Bio	240	-1.84	244.51
Indo Count	267.46	-1.81	272.39
SIS	329.6	-1.79	335.6
Thejo Engg	1784.5	-1.74	1816.03
Cheviot Company	1085.7	-1.73	1104.76

\* Stocks crossing below its Simple Moving Average (200DMA)



Nifty 50 Stocks - Summary Details											
Symbol	LTP	Chng	% Chng	Volume (lacs)	Turnover (crs.)	52w High	Diff with 52w H	52w Low	Diff with 52w L	365 days % chng	30 days % chng
NIFTY 50	24173.05	-205.05	-0.84%	4675.50	39617	26373	8.34%	22183	8.97%	7.38%	-0.64%
ADANIENT	2301.00	40.20	1.78%	29.48	673	2617	12.06%	1753	31.26%	25.53%	-3.41%
ADANIPTS	1610.00	21.40	1.35%	24.07	384	1612	0.12%	1181	36.30%	23.50%	29.93%
APOLLOHOSP	7773.00	111.00	1.45%	3.04	235	8100	4.03%	6678	16.41%	8.79%	8.84%
ASIANPAINT	2516.00	-46.90	-1.83%	13.79	348	2986	15.73%	2115	18.96%	18.61%	2.56%
AXISBANK	1369.20	-10.40	-0.75%	56.71	779	1418	3.46%	1043	31.34%	16.97%	13.45%
BAJAJ-AUTO	9557.50	-44.50	-0.46%	4.44	424	10187	6.18%	7612	25.56%	8.90%	15.69%
BAJAJFINSV	1786.40	-56.50	-3.07%	9.10	164	2195	18.62%	1597	11.86%	6.62%	-14.97%
BAJFINANCE	916.50	-18.25	-1.95%	91.44	838	1103	16.87%	788	16.32%	12.79%	-1.69%
BEL	449.75	1.05	0.23%	150.22	674	473	5.01%	294	53.13%	10.91%	47.05%
BHARTIARTL	1841.50	12.50	0.68%	74.90	1375	2175	15.31%	1747	5.42%	2.54%	-2.13%
CIPLA	1307.00	70.70	5.72%	52.74	680	1673	21.88%	1166	12.12%	6.97%	-14.78%
COALINDIA	450.90	6.75	1.52%	89.89	403	476	5.27%	369	22.31%	-0.96%	13.02%
DRREDDY	1325.00	108.00	8.87%	164.08	2157	1380	3.96%	1129	17.32%	5.72%	11.72%
EICHERMOT	7085.00	-145.00	-2.01%	4.82	343	8230	13.91%	5220	35.74%	6.04%	23.43%
ETERNAL	259.35	-3.64	-1.38%	338.34	879	368	29.61%	213	21.99%	14.27%	8.41%
GRASIM	2734.00	-42.60	-1.53%	8.59	236	2979	8.22%	2503	9.25%	8.02%	1.80%
HCLTECH	1276.20	-9.10	-0.71%	83.05	1062	1780	28.31%	1272	0.33%	-6.07%	-19.94%
HDFCBANK	783.90	-16.00	-2.00%	376.78	2969	1021	23.18%	727	7.88%	5.34%	-18.51%
HDFCLIFE	597.50	-6.55	-1.08%	44.86	270	821	27.20%	555	7.64%	0.91%	-15.74%
HINDALCO	1041.00	1.10	0.11%	43.70	455	1049	0.76%	604	72.42%	23.89%	65.47%
HINDUNILVR	2353.00	-15.80	-0.67%	20.64	489	2750	14.44%	2023	16.34%	14.66%	-2.92%
ICICIBANK	1347.00	-20.60	-1.51%	201.12	2713	1500	10.20%	1188	13.42%	10.17%	-5.43%
INDIGO	4567.20	-73.70	-1.59%	10.25	467	6233	26.72%	3895	17.25%	15.76%	-17.83%
INFY	1231.80	-36.80	-2.90%	147.93	1850	1728	28.72%	1215	1.37%	-1.99%	-16.48%
ITC	305.35	-0.15	-0.05%	107.02	326	444	31.26%	287	6.39%	5.13%	-29.13%
JIOFIN	248.50	9.99	4.19%	744.32	1832	339	26.61%	223	11.29%	9.91%	-3.73%
JSWSTEEL	1258.90	-4.50	-0.36%	17.15	216	1296	2.89%	935	34.64%	13.46%	21.14%
KOTAKBANK	371.45	-5.40	-1.43%	276.28	1025	460	19.32%	346	7.51%	4.18%	-16.60%
LT	4050.00	28.90	0.72%	22.29	900	4440	8.78%	3225	25.58%	21.17%	22.69%
M&M	3060.00	-89.70	-2.85%	45.41	1391	3840	20.31%	2666	14.78%	3.53%	4.87%
MARUTI	13143.00	-194.00	-1.45%	5.41	714	17370	24.34%	11289	16.42%	6.38%	10.38%
MAXHEALTH	1002.05	-3.30	-0.33%	13.93	140	1314	23.76%	903	10.97%	4.72%	-11.29%
NESTLEIND	1408.50	12.70	0.91%	29.63	417	1425	1.17%	1085	29.85%	20.71%	15.76%
NTPC	402.80	-2.60	-0.64%	91.45	368	407	1.09%	316	27.65%	8.16%	10.72%
ONGC	286.45	2.80	0.99%	135.25	388	293	2.24%	228	25.39%	7.91%	13.59%
POWERGRID	318.30	-1.45	-0.45%	72.95	233	323	1.47%	250	27.32%	5.36%	1.06%
RELIANCE	1344.40	-17.70	-1.30%	163.85	2208	1612	16.59%	1267	6.11%	-4.50%	3.42%
SBILIFE	1830.50	-54.30	-2.88%	42.00	775	2132	14.14%	1595	14.74%	-0.10%	13.31%
SBIN	1095.00	-8.30	-0.75%	136.69	1496	1235	11.31%	756	44.94%	6.11%	34.61%
SHRIRAMFIN	1010.00	-34.55	-3.31%	46.59	475	1108	8.84%	567	78.29%	15.07%	43.49%
SUNPHARMA	1678.00	8.20	0.49%	32.45	549	1851	9.36%	1548	8.40%	-4.57%	-6.19%
TATACONSUM	1181.90	3.30	0.28%	15.81	187	1221	3.19%	1007	17.35%	15.47%	2.76%
TATASTEEL	210.50	-2.53	-1.19%	193.04	408	216	2.75%	137	53.59%	12.46%	49.12%
TCS	2518.20	-20.30	-0.80%	25.09	637	3631	30.64%	2346	7.33%	5.64%	-26.22%
TECHM	1416.90	-45.70	-3.12%	41.02	587	1854	23.58%	1303	8.74%	2.38%	-1.58%
TITAN	4450.00	-4.60	-0.10%	6.80	302	4554	2.28%	3246	37.11%	15.49%	32.55%
TMPV	351.45	-10.40	-2.87%	113.74	404	744	52.76%	294	19.42%	15.14%	-46.74%
TRENT	4244.00	-190.50	-4.30%	48.03	2082	6261	32.22%	3276	29.57%	26.43%	-20.36%
ULTRACEMCO	12202.00	9.00	0.07%	2.27	275	13110	6.93%	10325	18.18%	17.76%	2.12%
WIPRO	202.87	-1.13	-0.55%	203.07	413	273	25.72%	187	8.78%	8.17%	-16.72%

## Disclaimer / Disclosures

### ANALYST CERTIFICATION

I, Mrs. Vaishali Parekh B.com, Research Analyst, author and the name subscribed to this report, hereby certify that all of the views expressed in this research report accurately reflect our views about the subject issuer(s) or securities. We also certify that no part of our compensation was, is, or will be directly or indirectly related to the specific recommendation(s) or view(s) in this report.

Terms & conditions and other disclosures:

Prabhudas Lilladher Pvt. Ltd, Mumbai, India (hereinafter referred to as "PL") is engaged in the business of Stock Broking, Portfolio Manager, Depository Participant and distribution for third party financial products. PL is a subsidiary of Prabhudas Lilladher Advisory Services Pvt Ltd. which has its various subsidiaries engaged in business of commodity broking, investment banking, financial services (margin funding) and distribution of third party financial/other products, details in respect of which are available at [www.plindia.com](http://www.plindia.com)

This document has been prepared by the Research Division of PL and is meant for use by the recipient only as information and is not for circulation. This document is not to be reported or copied or made available to others without prior permission of PL. It should not be considered or taken as an offer to sell or a solicitation to buy or sell any security.

The information contained in this report has been obtained from sources that are considered to be reliable. However, PL has not independently verified the accuracy or completeness of the same. Neither PL nor any of its affiliates, its directors or its employees accepts any responsibility of whatsoever nature for the information, statements and opinion given, made available or expressed herein or for any omission therein.

Recipients of this report should be aware that past performance is not necessarily a guide to future performance and value of investments can go down as well. The suitability or otherwise of any investments will depend upon the recipient's particular circumstances and, in case of doubt, advice should be sought from an independent expert/advisor.

Either PL or its affiliates or its directors or its employees or its representatives or its clients or their relatives may have position(s), make market, act as principal or engage in transactions of securities of companies referred to in this report and they may have used the research material prior to publication.

PL may from time to time solicit or perform investment banking or other services for any company mentioned in this document.

PL is registered as Research Analyst under Securities and Exchange Board of India (Research Analysts) Regulations, 2014 PL submits that no material disciplinary action has been taken on us by any Regulatory Authority impacting Equity Research Analysis activities.

PL or its research analysts or its associates or his relatives do not have any financial interest in the subject company.

PL or its research analysts or its associates or his relatives do not have actual/beneficial ownership of one per cent or more securities of the subject company at the end of the month immediately preceding the date of publication of the research report.

PL or its research analysts or its associates or his relatives do not have any material conflict of interest at the time of publication of the research report.

PL or its associates might have received compensation from the subject company in the past twelve months.

PL or its associates might have managed or co-managed public offering of securities for the subject company in the past twelve months or mandated by the subject company for any other assignment in the past twelve months.

PL or its associates might have received any compensation for investment banking or merchant banking or brokerage services from the subject company in the past twelve months.

PL or its associates might have received any compensation for products or services other than investment banking or merchant banking or brokerage services from the subject company in the past twelve months PL or its associates might have received any compensation or other benefits from the subject company or third party in connection with the research report.

PL encourages independence in research report preparation and strives to minimize conflict in preparation of research report. PL or its analysts did not receive any compensation or other benefits from the subject Company or third party in connection with the preparation of the research report. PL or its Research Analysts do not have any material conflict of interest at the time of publication of this report.

It is confirmed that Mrs. Vaishali Parekh B.com, Research Analyst of this report has not received any compensation from the companies mentioned in the report in the preceding twelve months compensation of our Research Analysts is not based on any specific merchant banking, investment banking or brokerage service transactions.

The Research analysts for this report certifies that all of the views expressed in this report accurately reflect his or her personal views about the subject company or companies and its or their securities, and no part of his or her compensation was, is or will be, directly or indirectly related to specific recommendations or views expressed in this report.

The research analysts for this report has not served as an officer, director or employee of the subject company PL or its research analysts have not engaged in market making activity for the subject company

Our sales people, traders, and other professionals or affiliates may provide oral or written market commentary or trading strategies to our clients that reflect opinions that are contrary to the opinions expressed herein, and our proprietary trading and investing businesses may make investment decisions that are inconsistent with the recommendations expressed herein. In reviewing these materials, you should be aware that any or all of the foregoing, among other things, may give rise to real or potential conflicts of interest.

PL and its associates, their directors and employees may (a) from time to time, have a long or short position in, and buy or sell the securities of the subject company or (b) be engaged in any other transaction involving such securities and earn brokerage or other compensation or act as a market maker in the financial instruments of the subject company or act as an advisor or lender/borrower to the subject company or may have any other potential conflict of interests with respect to any recommendation and other related information and opinions.

**Regd. Office:** 3<sup>rd</sup> Floor, Sadhana House, 570, P. B. Marg, Behind Mahindra Tower, Worli, Mumbai - 400 018, India.