

\* Sensex 77303.63 + 639.42

\* Nifty 24092.70 + 194.75

\* Bank Nifty 56264.30 + 174.55

## Market Preview

### Nifty sustains above 24000 zone

Nifty witnessed a revival to close above the 24000 zone with sentiment slightly easing out and would need to move past the 24300 level in the coming sessions to gather strength. BankNifty closed near the 50EMA level at 56300 zone with consolidation visible and would need to sustain the zone to maintain the bias intact. The market breadth was overall positive with the advance decline indicating a ratio of 3:1 at close.

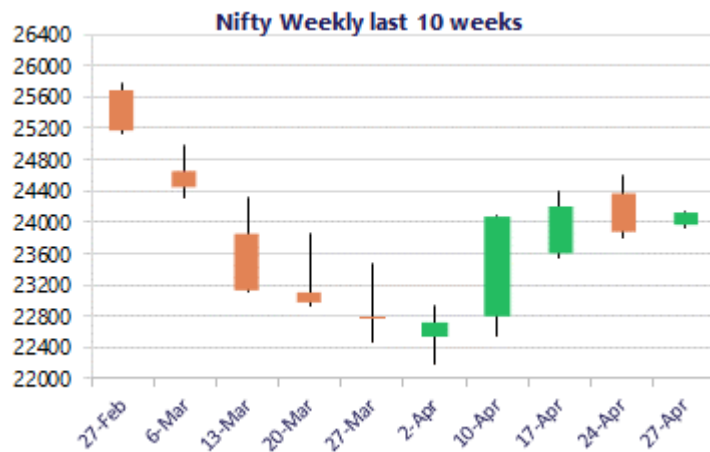
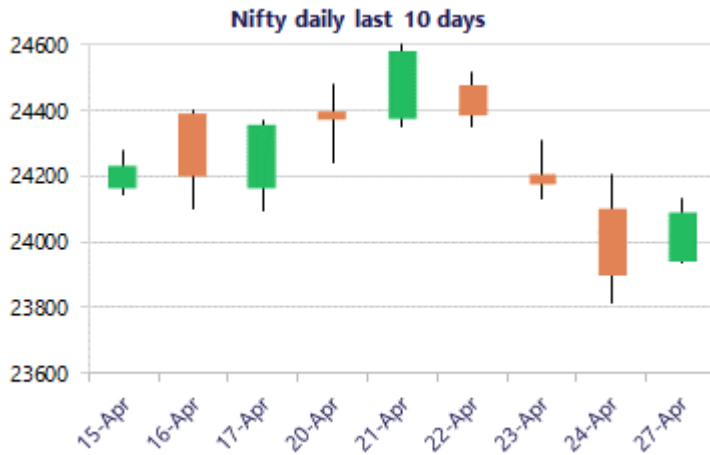
## Market Forecast

### Nifty daily range 23800 - 24300

Nifty witnessed a positive session opening with a gap up and picking up momentum to end above the 24000 zone with active participation witnessed from the broader markets to support the index easing out the sentiment. The index would need to sustain above the 50EMA at 24200 level and the important hurdle of 24300 needs to be breached decisively to establish conviction and improve the bias overall. The index would have the important support zone at 23500 level which needs to be sustained to maintain the bias intact as of now.

BankNifty ended the session in the green with consolidation witnessed near the important 50EMA at 56300 zone sustaining above the near-term support zone of 55800 level with bias maintained with a cautiously positive approach as of now. As mentioned earlier, the important support at 55000 and thereafter, 53500 levels shall be the crucial zone which needs to be sustained in the coming sessions whereas on the upside, the 200 period MA at 57300 level would be the important hurdle which needs to be breached above decisively.

The support for the day is seen at 23800 levels, while the resistance is seen at 24300 levels. BankNifty would have the daily range of 55500-57000 levels.



\*Blue candle → Close rate > Open rate \* Red candle → Close rate < Open rate

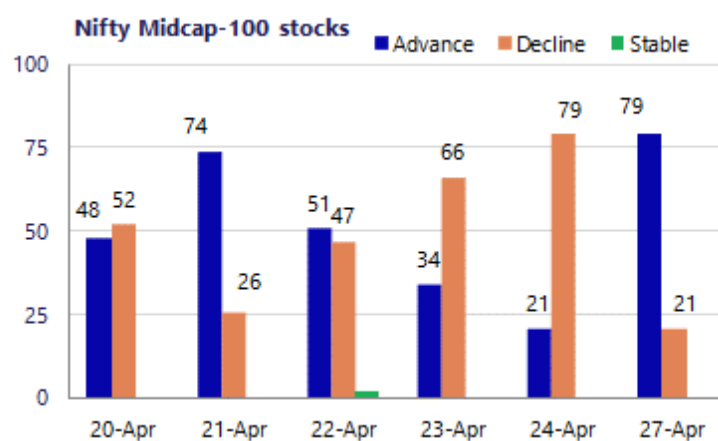
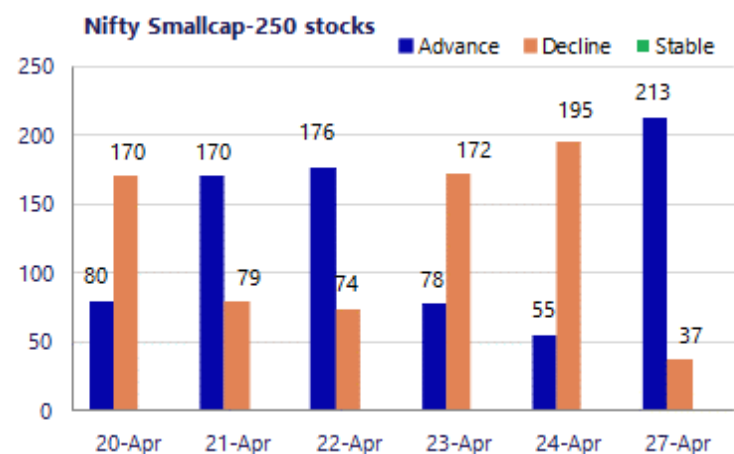
Sensex	Period	Closing	% Chng	Trend	Reversal	2 Sup	1 Sup	Pivot	1 Res	2 Res
Nifty	Daily	24092.70	0.81%	-3	24317.30	23859	23976	24053	24170	24248
	Weekly	23897.95	-1.87%	3	22690.75	23745	23821	24211	24288	24678
	Monthly	22331.40	-11.31%	-3	26623.20	20499	21415	23202	24118	25905
Bank Nifty	Daily	56264.30	0.31%	-3	56731.70	55653	55959	56217	56522	56781
	Weekly	56089.75	-0.84%	3	52676.60	55349	55719	56588	56958	57827
	Monthly	50275.35	-16.94%	-1	64512.75	43464	46870	53524	56929	63583
Sensex	Daily	77303.63	0.81%	-3	78201.85	76493	76899	77159	77564	77825
	Weekly	76681.29	-2.31%	3	72703.00	76081	76381	77874	78174	79667
	Monthly	71947.55	-11.49%	-3	85936.10	66196	69072	74852	77728	83509

**Gainers - Losers ( Nifty 500 Stocks )**
**Gainers**

Company Name	Last Price	% Gain	Volume
Blue Jet	443.65	9.99%	1214680
Anant Raj	500.90	8.33%	13759238
Ather Energy	941.2	6.59%	4709654
Aegis Vopak	198.30	5.40%	423704
Blue Star	1,916.30	5.38%	939715
Apar Ind	12,135.00	5.23%	133562
Amber Enterpris	8,111.50	4.62%	473760

**Losers**

Company Name	Last Price	% Loss	Volume
Axis Bank	1,324.20	-3.05%	10767753
AU Small Financ	1043	-2.13%	1931944
AAVAS Financier	1,384.90	-1.87%	70246
Astral Ltd	1,535.00	-1.80%	535719
Bata India	731.15	-0.85%	395766
APL Apollo	1987.7	-0.84%	405884
Allied Blenders	554.55	-0.67%	102766



### Nifty Daily chart with RSI indicator



### BankNifty Daily chart with RSI indicator



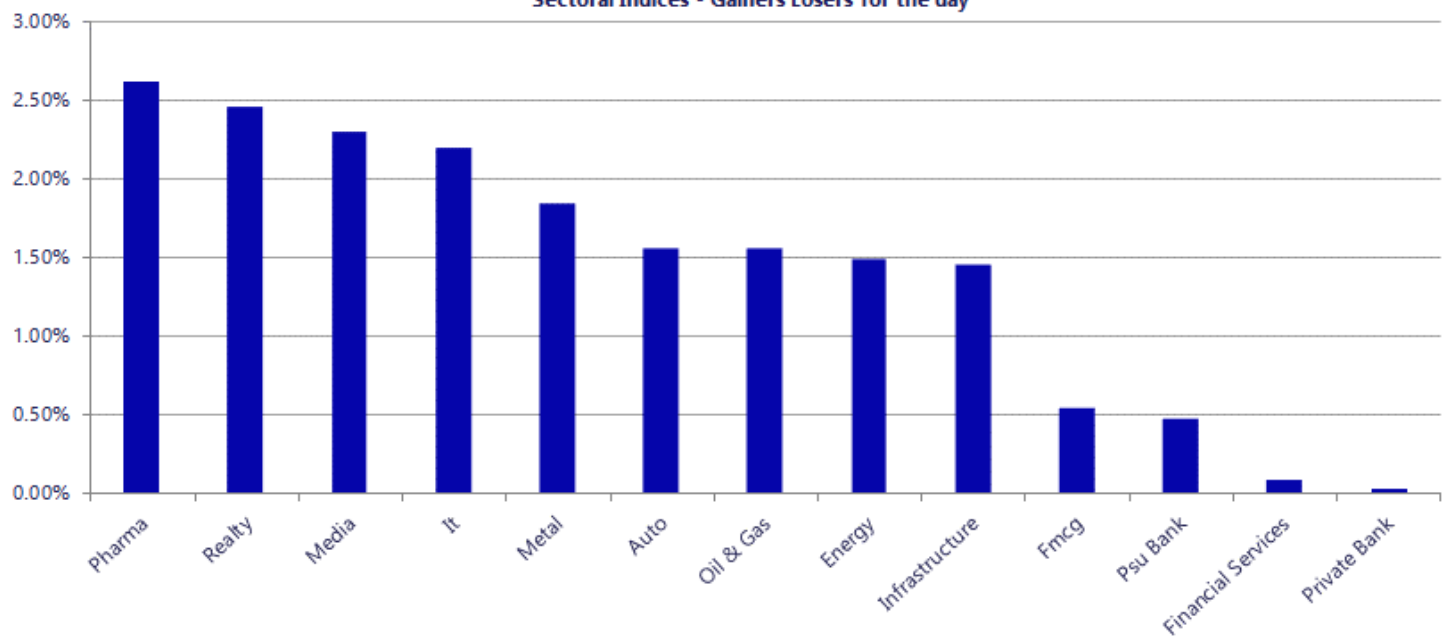
Breakouts - Cross above 200 DMA			
Company Name	LCP	Change %	200 DMA
Sahasra Electro	307.7	11.82	275.18
Auto Stampings	532.3	7.79	493.82
Advanced Enzyme	330.55	6.94	309.1
BLS E-Services	192.23	5.91	181.5
Ratnaveer Preci	157.1	5.00	149.62
Vaidya Sane	248.25	4.80	236.87
Blue Star	1916.3	4.55	1832.99
Premier Explo	545.9	4.49	522.44
Tainwala Chem	208.86	4.47	199.92
Automotive Axle	1877.9	4.38	1799.08
Baheti Recyclin	595.7	4.28	571.27
Barak Vally Cem	45.88	3.68	44.25
Cords Cable Ind	182.68	3.28	176.87
NHPC	83.23	3.08	80.74
BlackBuck	618.75	2.93	601.14
Lagnam Spintex	81.29	2.89	79.01
Tanla Platforms	582.95	2.83	566.9
Omax Autos	117.78	2.82	114.55

Breakdown - Cross below 200 DMA			
Company Name	LCP	Change %	200 DMA
Chaman Metallic	127.1	-5.26	134.16
Sundaram-Clayto	1430.7	-3.67	1485.14
Rockingdeals	195	-3.05	201.13
Industrial Inv	158.79	-3.01	163.72
Ginni Filaments	41.49	-1.98	42.33
STEL Holdings	454.05	-1.23	459.69
Elecon Eng	497.45	-1.22	503.58
Digjam	47.88	-0.66	48.2
Srivasavi	56.3	-0.57	56.62
Nureca	265.8	-0.35	266.74
DIC India	538.65	-0.10	539.2
Deepak Nitrite	1684.9	-0.06	1685.99
Orissa Bengal C	55.5	-0.05	55.53

\* Stocks crossing above its Simple Moving Average (200DMA)

\* Stocks crossing below its Simple Moving Average (200DMA)

Sectoral Indices - Gainers Losers for the day



Nifty 50 Stocks - Summary Details											
Symbol	LTP	Chng	% Chng	Volume (lacs)	Turnover (crs.)	52w High	Diff with 52w H	52w Low	Diff with 52w L	365 days % chng	30 days % chng
NIFTY 50	24092.70	194.75	0.81%	4301.73	36679	26373	8.65%	22183	8.61%	5.58%	0.22%
ADANIENT	2322.30	34.70	1.52%	15.00	348	2617	11.24%	1753	32.48%	27.39%	1.60%
ADANIPTS	1628.00	42.90	2.71%	37.87	617	1650	1.33%	1181	37.83%	21.69%	36.46%
APOLLOHOSP	7840.00	107.50	1.39%	2.90	226	8100	3.20%	6678	17.41%	3.85%	12.76%
ASIANPAINT	2478.10	-7.00	-0.28%	4.52	113	2986	17.00%	2115	17.17%	12.26%	1.91%
AXISBANK	1325.40	-40.50	-2.97%	107.68	1417	1418	6.55%	1043	27.14%	9.97%	13.64%
BAJAJ-AUTO	9675.00	99.00	1.03%	1.48	143	10187	5.03%	7612	27.10%	8.70%	20.43%
BAJAJFINSV	1774.00	3.30	0.19%	12.68	225	2195	19.18%	1597	11.08%	4.68%	-13.27%
BAJFINANCE	923.00	1.45	0.16%	78.11	719	1103	16.28%	788	17.15%	9.39%	1.29%
BEL	436.00	-8.45	-1.90%	185.01	810	473	7.91%	294	48.45%	7.72%	46.51%
BHARTIARTL	1816.00	1.50	0.08%	44.13	804	2175	16.49%	1747	3.96%	-1.51%	-0.07%
CIPLA	1315.00	20.00	1.54%	17.21	226	1673	21.40%	1166	12.81%	5.85%	-13.82%
COALINDIA	454.50	-1.50	-0.33%	69.21	314	476	4.52%	369	23.29%	2.12%	15.60%
DRREDDY	1335.50	18.40	1.40%	19.40	259	1380	3.20%	1129	18.25%	4.20%	13.68%
EICHERMOT	7178.00	66.50	0.94%	3.36	240	8230	12.78%	5220	37.52%	5.38%	28.74%
ETERNAL	254.96	-1.83	-0.71%	319.80	821	368	30.80%	213	19.92%	9.35%	11.43%
GRASIM	2785.00	45.70	1.67%	9.86	274	2979	6.51%	2503	11.29%	5.97%	1.84%
HCLTECH	1230.20	27.00	2.24%	60.66	739	1780	30.89%	1198	2.68%	-9.84%	-22.05%
HDFCBANK	790.00	5.15	0.66%	181.13	1429	1021	22.59%	727	8.72%	4.47%	-17.33%
HDFCLIFE	595.30	7.10	1.21%	55.48	332	821	27.47%	555	7.24%	-2.44%	-15.51%
HINDALCO	1064.40	16.05	1.53%	42.41	449	1067	0.20%	604	76.30%	22.81%	71.10%
HINDUNILVR	2326.50	-0.80	-0.03%	11.00	257	2750	15.40%	2023	15.03%	12.15%	-0.24%
ICICIBANK	1316.60	-9.60	-0.72%	153.86	2030	1500	12.23%	1188	10.86%	6.71%	-6.28%
INDIGO	4565.00	41.90	0.93%	8.34	380	6233	26.75%	3895	17.20%	11.36%	-14.09%
INFY	1172.90	18.30	1.58%	195.78	2295	1728	32.12%	1152	1.80%	-7.62%	-20.76%
ITC	304.00	2.40	0.80%	143.78	437	444	31.56%	287	5.92%	3.16%	-28.94%
JIOFIN	254.60	8.87	3.61%	258.38	648	339	24.81%	223	14.02%	9.48%	0.61%
JSWSTEEL	1285.00	29.30	2.33%	23.09	297	1297	0.93%	935	37.43%	13.69%	24.95%
KOTAKBANK	377.00	6.15	1.66%	115.60	436	453	16.81%	346	9.12%	2.96%	-14.49%
LT	4055.00	40.70	1.01%	20.00	813	4440	8.67%	3230	25.54%	13.77%	23.93%
M&M	3104.80	66.40	2.19%	18.16	562	3840	19.14%	2831	9.67%	2.09%	8.40%
MARUTI	13225.00	177.00	1.36%	3.13	412	17370	23.86%	11289	17.15%	6.75%	13.05%
MAXHEALTH	1008.00	8.60	0.86%	10.66	108	1314	23.31%	903	11.63%	3.37%	-5.56%
NESTLEIND	1411.70	-9.60	-0.68%	17.19	245	1438	1.82%	1085	30.15%	18.31%	16.98%
NTPC	412.20	10.35	2.58%	129.99	533	414	0.53%	316	30.63%	9.73%	15.64%
ONGC	285.90	1.10	0.39%	64.96	185	293	2.42%	228	25.15%	1.40%	16.06%
POWERGRID	321.00	4.60	1.45%	93.31	300	325	1.22%	250	28.40%	8.63%	4.73%
RELIANCE	1370.00	42.20	3.18%	246.71	3322	1612	15.00%	1288	6.36%	1.62%	5.35%
SBILIFE	1814.00	45.10	2.55%	19.19	346	2132	14.92%	1603	13.16%	-1.28%	7.01%
SBIN	1112.00	10.90	0.99%	116.23	1289	1235	9.94%	756	47.19%	9.07%	39.23%
SHRIRAMFIN	974.00	-37.30	-3.69%	150.90	1473	1108	12.09%	567	71.93%	7.77%	48.66%
SUNPHARMA	1731.00	110.60	6.83%	269.95	4660	1851	6.49%	1548	11.82%	-3.49%	-3.16%
TATACONSUM	1160.00	-14.00	-1.19%	10.20	119	1221	4.99%	1007	15.17%	10.63%	0.37%
TATASTEEL	213.28	3.21	1.53%	330.60	707	216	1.46%	138	54.55%	10.38%	53.60%
TCS	2448.00	51.10	2.13%	58.53	1428	3631	32.57%	2346	4.34%	2.44%	-29.00%
TECHM	1398.00	39.50	2.91%	18.34	255	1854	24.60%	1304	7.20%	0.46%	-4.38%
TITAN	4451.90	41.90	0.95%	6.49	288	4554	2.24%	3246	37.17%	11.81%	32.29%
TMPV	354.35	3.85	1.10%	97.13	343	744	52.37%	294	20.40%	16.87%	-45.92%
TRENT	4256.00	-41.30	-0.96%	10.57	454	6261	32.02%	3276	29.93%	25.19%	-17.28%
ULTRACEMCO	12000.00	2.00	0.02%	5.67	685	13110	8.47%	10325	16.22%	8.61%	-1.94%
WIPRO	204.98	5.62	2.82%	426.13	868	273	24.94%	187	9.91%	6.98%	-14.91%

## Disclaimer / Disclosures

### ANALYST CERTIFICATION

I, Mrs. Vaishali Parekh B.com, Research Analyst, author and the name subscribed to this report, hereby certify that all of the views expressed in this research report accurately reflect our views about the subject issuer(s) or securities. We also certify that no part of our compensation was, is, or will be directly or indirectly related to the specific recommendation(s) or view(s) in this report.

Terms & conditions and other disclosures:

Prabhudas Lilladher Pvt. Ltd, Mumbai, India (hereinafter referred to as "PL") is engaged in the business of Stock Broking, Portfolio Manager, Depository Participant and distribution for third party financial products. PL is a subsidiary of Prabhudas Lilladher Advisory Services Pvt Ltd. which has its various subsidiaries engaged in business of commodity broking, investment banking, financial services (margin funding) and distribution of third party financial/other products, details in respect of which are available at [www.plindia.com](http://www.plindia.com)

This document has been prepared by the Research Division of PL and is meant for use by the recipient only as information and is not for circulation. This document is not to be reported or copied or made available to others without prior permission of PL. It should not be considered or taken as an offer to sell or a solicitation to buy or sell any security.

The information contained in this report has been obtained from sources that are considered to be reliable. However, PL has not independently verified the accuracy or completeness of the same. Neither PL nor any of its affiliates, its directors or its employees accepts any responsibility of whatsoever nature for the information, statements and opinion given, made available or expressed herein or for any omission therein.

Recipients of this report should be aware that past performance is not necessarily a guide to future performance and value of investments can go down as well. The suitability or otherwise of any investments will depend upon the recipient's particular circumstances and, in case of doubt, advice should be sought from an independent expert/advisor.

Either PL or its affiliates or its directors or its employees or its representatives or its clients or their relatives may have position(s), make market, act as principal or engage in transactions of securities of companies referred to in this report and they may have used the research material prior to publication.

PL may from time to time solicit or perform investment banking or other services for any company mentioned in this document.

PL is registered as Research Analyst under Securities and Exchange Board of India (Research Analysts) Regulations, 2014 PL submits that no material disciplinary action has been taken on us by any Regulatory Authority impacting Equity Research Analysis activities.

PL or its research analysts or its associates or his relatives do not have any financial interest in the subject company.

PL or its research analysts or its associates or his relatives do not have actual/beneficial ownership of one per cent or more securities of the subject company at the end of the month immediately preceding the date of publication of the research report.

PL or its research analysts or its associates or his relatives do not have any material conflict of interest at the time of publication of the research report.

PL or its associates might have received compensation from the subject company in the past twelve months.

PL or its associates might have managed or co-managed public offering of securities for the subject company in the past twelve months or mandated by the subject company for any other assignment in the past twelve months.

PL or its associates might have received any compensation for investment banking or merchant banking or brokerage services from the subject company in the past twelve months.

PL or its associates might have received any compensation for products or services other than investment banking or merchant banking or brokerage services from the subject company in the past twelve months PL or its associates might have received any compensation or other benefits from the subject company or third party in connection with the research report.

PL encourages independence in research report preparation and strives to minimize conflict in preparation of research report. PL or its analysts did not receive any compensation or other benefits from the subject Company or third party in connection with the preparation of the research report. PL or its Research Analysts do not have any material conflict of interest at the time of publication of this report.

It is confirmed that Mrs. Vaishali Parekh B.com, Research Analyst of this report has not received any compensation from the companies mentioned in the report in the preceding twelve months compensation of our Research Analysts is not based on any specific merchant banking, investment banking or brokerage service transactions.

The Research analysts for this report certifies that all of the views expressed in this report accurately reflect his or her personal views about the subject company or companies and its or their securities, and no part of his or her compensation was, is or will be, directly or indirectly related to specific recommendations or views expressed in this report.

The research analysts for this report has not served as an officer, director or employee of the subject company PL or its research analysts have not engaged in market making activity for the subject company

Our sales people, traders, and other professionals or affiliates may provide oral or written market commentary or trading strategies to our clients that reflect opinions that are contrary to the opinions expressed herein, and our proprietary trading and investing businesses may make investment decisions that are inconsistent with the recommendations expressed herein. In reviewing these materials, you should be aware that any or all of the foregoing, among other things, may give rise to real or potential conflicts of interest.

PL and its associates, their directors and employees may (a) from time to time, have a long or short position in, and buy or sell the securities of the subject company or (b) be engaged in any other transaction involving such securities and earn brokerage or other compensation or act as a market maker in the financial instruments of the subject company or act as an advisor or lender/borrower to the subject company or may have any other potential conflict of interests with respect to any recommendation and other related information and opinions.

**Regd. Office:** 3<sup>rd</sup> Floor, Sadhana House, 570, P. B. Marg, Behind Mahindra Tower, Worli, Mumbai - 400 018, India.