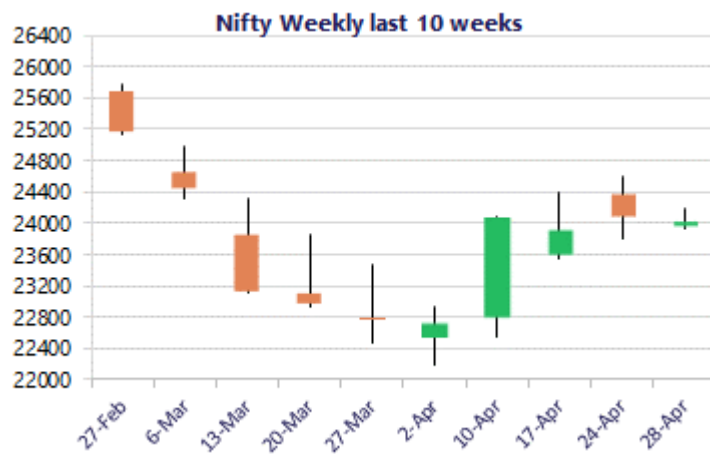
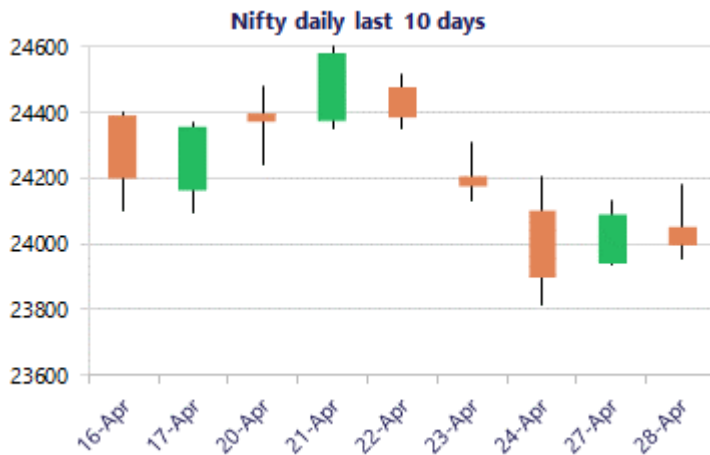


\* Sensex 76886.91 -416.72

\* Nifty 23995.70 -97.00

\* Bank Nifty 55400.35 -863.95



\*Blue candle → Close rate > Open rate \* Red candle → Close rate < Open rate

## Market Preview

### Nifty sustains near 24000 zone

Nifty witnessed a slightly weak session with profit booking dragging the index down just below the 24000 zone with bias once again maintained with a cautious approach. BankNifty was succumbed to heavy profit booking to slip down to end near the 55400 level with bias turning weak. The market breath was slightly weak with the advance decline indicating a ratio of 3:4 at close.

## Market Forecast

### Nifty daily range 23700 - 24300

Nifty witnessed a volatile session finding resistance near the 24200 zone and slipping down with profit booking seen to end near the 24000 level with no clarity visible for a convincing directional move, with bias and sentiment once again maintained with a cautious approach. The index is hovering below the important 50EMA zone at 24200 level and the important hurdle of 24300 needs to be breached decisively in the coming sessions to establish conviction and improve the bias overall. The index would have the important support zones at 23500 and 23200 levels which needs to be sustained.

BankNifty witnessed a weak session breaching below the important support of 55800 zone with heavy profit booking dragging the index down to close near the 55400 level with bias weakening once again and would have the next support near the 54400 level with bias turning into cautious mode. As mentioned earlier, the important support at 53500 levels shall be the crucial zone which needs to be sustained in the coming sessions whereas on the upside, the 200 period MA at 57300 level would be the important hurdle which needs to be breached above decisively. The support for the day is seen at 23700 levels, while the resistance is seen at 24300 levels. BankNifty would have the daily range of 54400-56300 levels.

Sensex	Period	Closing	% Chng	Trend	Reversal	2 Sup	1 Sup	Pivot	1 Res	2 Res
Nifty	Daily	23995.70	-0.40%	-4	24242.50	23820	23908	24045	24133	24270
	Weekly	23897.95	-1.87%	3	22690.75	23745	23821	24211	24288	24678
	Monthly	22331.40	-11.31%	-3	26623.20	20499	21415	23202	24118	25905
Bank Nifty	Daily	55400.35	-1.54%	-4	56584.10	54726	55063	55601	55938	56475
	Weekly	56089.75	-0.84%	3	52676.60	55349	55719	56588	56958	57827
	Monthly	50275.35	-16.94%	-1	64512.75	43464	46870	53524	56929	63583
Sensex	Daily	76886.91	-0.54%	-4	77880.95	76288	76587	77041	77340	77793
	Weekly	76681.29	-2.31%	3	72703.00	76081	76381	77874	78174	79667
	Monthly	71947.55	-11.49%	-3	85936.10	66196	69072	74852	77728	83509

**Gainers - Losers ( Nifty 500 Stocks )**
**Gainers**

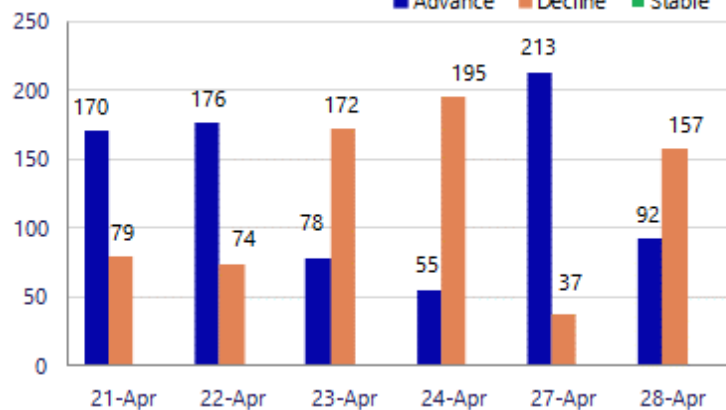
Company Name	Last Price	% Gain	Volume
Afcons Infra	333.9	5.75%	1514000
Adani Enterpris	2,412.40	3.90%	4375198
Aditya Birla Re	1511.4	2.90%	210058
Adani Total Gas	653.85	2.87%	15857936
Aarti Ind	501.70	2.65%	2532100
Adani Power	223.35	2.43%	46701062
Atul	6,855.00	2.31%	72000

**Losers**

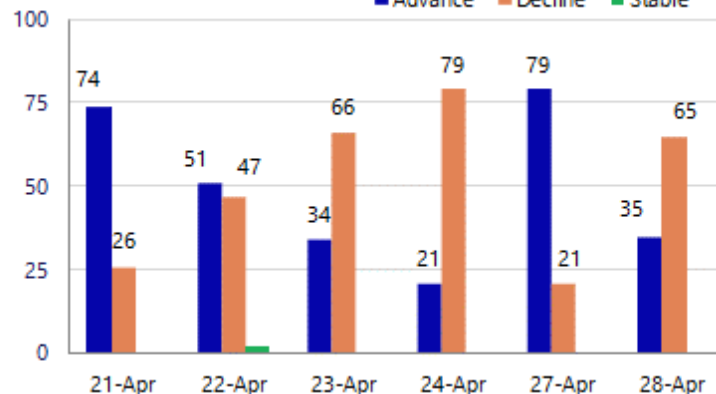
Company Name	Last Price	% Loss	Volume
Can Fin Homes	883.30	-3.51%	316329
Axis Bank	1289	-2.66%	9934420
Bank of Mah	77.74	-2.52%	24355268
Brainbees Solu	245.58	-2.42%	937917
Balrampur Chini	508.70	-2.27%	814962
Apar Ind	11862	-2.25%	110482
Bank of Baroda	267.83	-2.25%	12426148

**Nifty Smallcap-250 stocks**

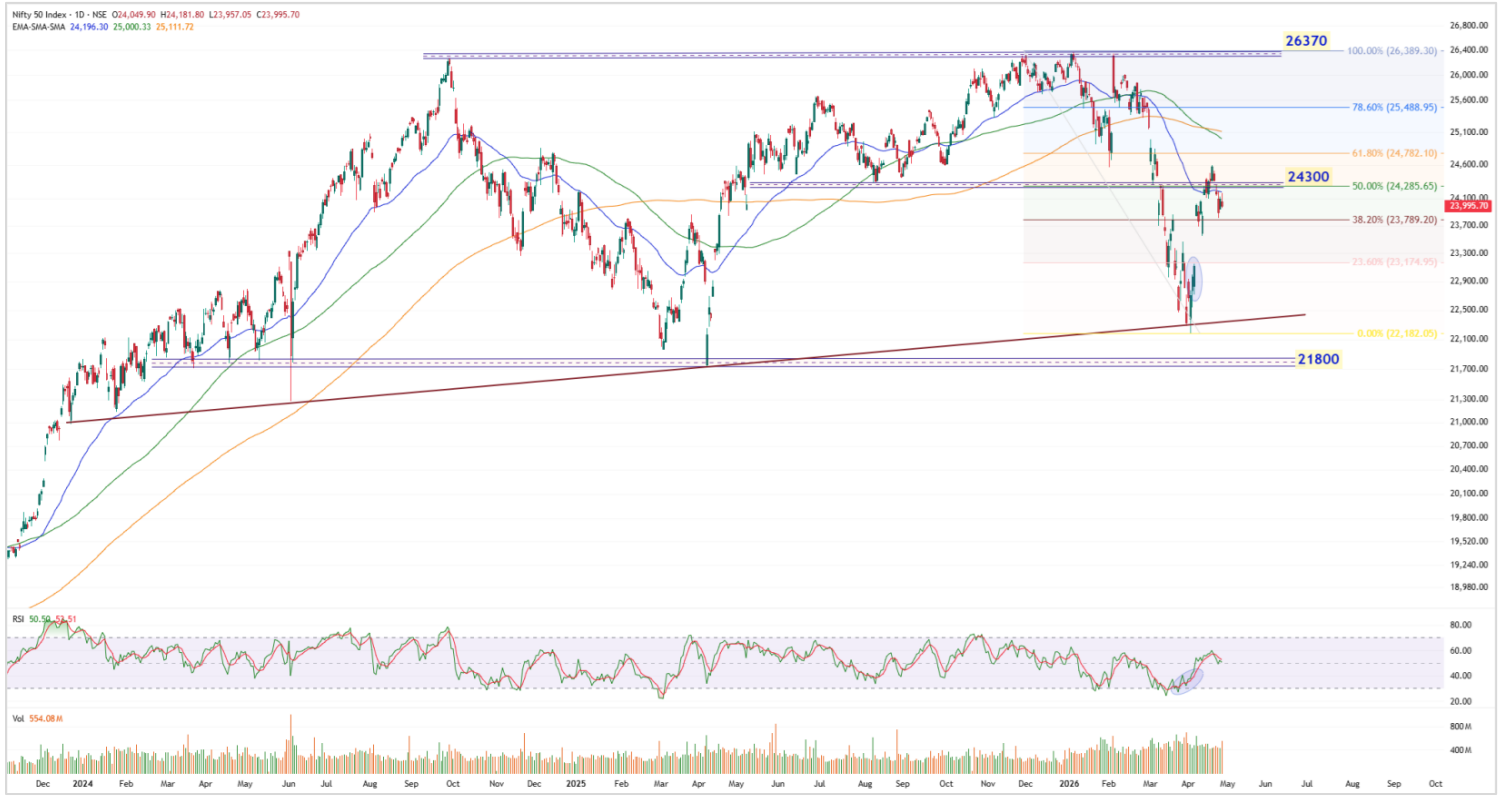
■ Advance ■ Decline ■ Stable


**Nifty Midcap-100 stocks**

■ Advance ■ Decline ■ Stable



### Nifty Daily chart with RSI indicator



### BankNifty Daily chart with RSI indicator

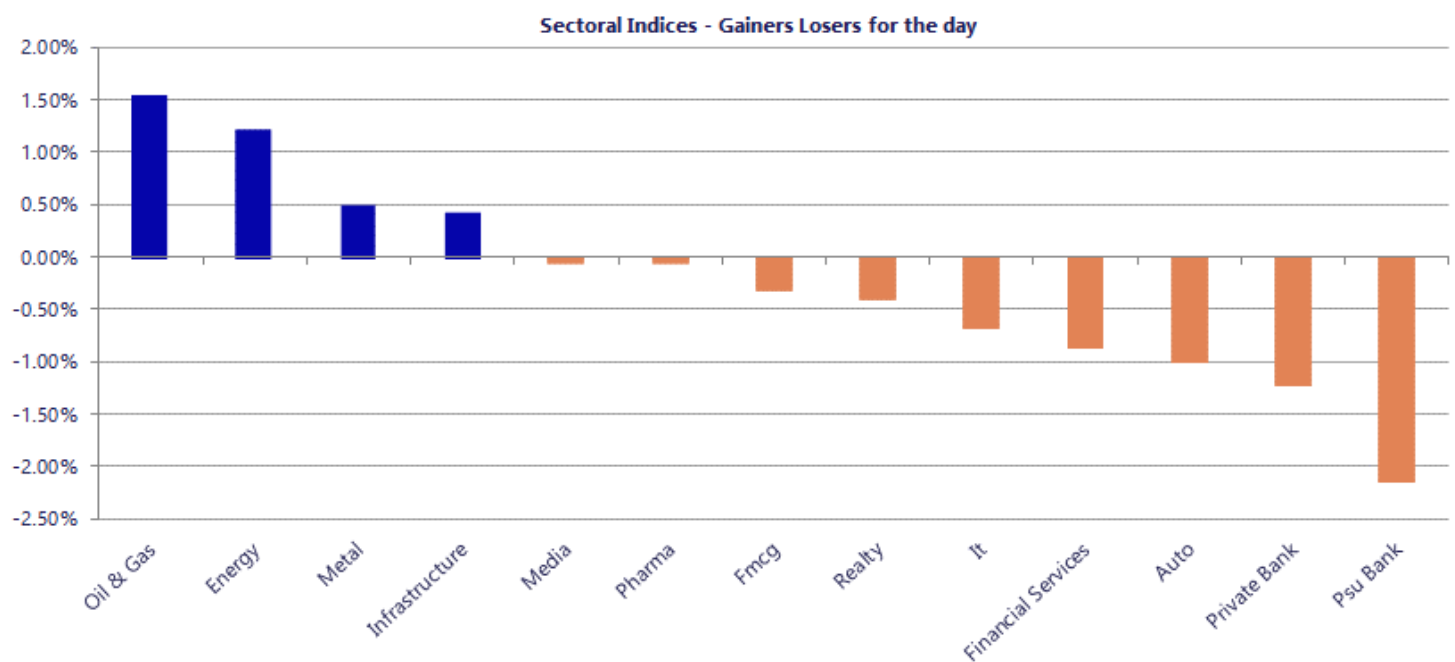


Breakouts - Cross above 200 DMA			
Company Name	LCP	Change %	200 DMA
Orient Bell	320.7	11.23	288.32
Plastiblends	181.02	6.88	169.36
Urja Global	12.64	6.40	11.88
Cubex Tubings	100.89	5.62	95.52
Jyoti Structure	13.68	5.39	12.98
HOEC	161.97	4.57	154.89
Orient Green	12.72	4.52	12.17
Srivasavi	59	4.35	56.54
DCG Cables & Wi	68.45	4.27	65.65
SHUBHLAXMI	22.95	4.08	22.05
Electronics Mar	122.75	3.01	119.16
Solex Energy	1358.8	2.94	1319.98
Panache Digilif	331.85	2.88	322.57
Industrial Inv	168.12	2.72	163.67
Tamil Newsprint	152.21	2.63	148.31
Banka Bioloo	74.56	2.01	73.09
Poddar Pigments	268.5	1.77	263.84
ITI	305.51	1.72	300.33

\* Stocks crossing above its Simple Moving Average (200DMA)

Breakdown - Cross below 200 DMA			
Company Name	LCP	Change %	200 DMA
BlackBuck	581.65	-3.39	602.08
Vilas Transcore	431.8	-3.36	446.82
Avantel	151.27	-2.26	154.77
SPML Infra	212.65	-2.07	217.15
Lead Reclaim	74.25	-1.92	75.7
Bank of Baroda	267.83	-1.83	272.82
Orient Electric	188.3	-1.66	191.48
Leela Palaces	419.8	-1.50	426.21
Karma Energy	50.54	-1.35	51.23
Magadh Sugar	507.35	-1.24	513.74
Tanla Platforms	559.55	-1.24	566.6
Tarmat	53.04	-1.23	53.7
M&M Financial	312.65	-1.13	316.21
RBM Infracon	411.2	-1.05	415.57
Marksans Pharma	184.1	-1.05	186.06
Pratham EPC Pro	141	-1.03	142.47
OnMobile Global	55.6	-0.93	56.12
Jeena Sikho	674.95	-0.91	681.14

\* Stocks crossing below its Simple Moving Average (200DMA)



Nifty 50 Stocks - Summary Details											
Symbol	LTP	Chng	% Chng	Volume (lacs)	Turnover (crs.)	52w High	Diff with 52w H	52w Low	Diff with 52w L	365 days % chng	30 days % chng
NIFTY 50	23995.70	-97.00	-0.40%	5539.89	43380	26373	9.01%	22183	8.17%	5.15%	-1.37%
ADANIENT	2415.00	93.20	4.01%	43.75	1045	2617	7.70%	1753	37.76%	32.47%	4.96%
ADANIPTS	1639.00	10.50	0.64%	25.00	409	1650	0.66%	1181	38.76%	22.51%	35.47%
APOLLOHOSP	7740.00	-85.00	-1.09%	3.54	275	8100	4.44%	6678	15.91%	2.53%	9.87%
ASIANPAINT	2456.10	-29.10	-1.17%	5.57	138	2986	17.74%	2115	16.13%	11.27%	0.16%
AXISBANK	1288.80	-35.40	-2.67%	99.34	1289	1418	9.13%	1043	23.63%	6.94%	8.05%
BAJAJ-AUTO	9483.00	-179.00	-1.85%	2.57	246	10187	6.91%	7612	24.58%	6.54%	17.13%
BAJAJFINSV	1779.90	7.70	0.43%	14.14	251	2195	18.91%	1597	11.45%	5.03%	-13.16%
BAJFINANCE	920.00	-1.80	-0.20%	71.18	657	1103	16.55%	788	16.77%	9.03%	1.18%
BEL	436.65	1.05	0.24%	108.71	475	473	7.77%	294	48.67%	7.88%	43.14%
BHARTIARTL	1851.00	30.90	1.70%	105.52	1940	2175	14.88%	1747	5.96%	0.39%	1.60%
CIPLA	1310.90	-6.30	-0.48%	15.02	197	1673	21.64%	1166	12.46%	5.52%	-15.70%
COALINDIA	467.40	14.90	3.29%	267.27	1252	476	1.81%	369	26.79%	5.02%	17.69%
DRREDDY	1347.40	12.90	0.97%	23.36	316	1380	2.34%	1129	19.30%	5.13%	12.41%
EICHERMOT	7075.00	-99.00	-1.38%	5.60	399	8230	14.03%	5220	35.55%	3.87%	25.84%
ETERNAL	258.28	2.79	1.09%	1049.74	2628	368	29.90%	213	21.49%	10.77%	13.67%
GRASIM	2775.90	-2.30	-0.08%	15.62	440	2979	6.82%	2503	10.93%	5.62%	0.82%
HCLTECH	1199.80	-28.40	-2.31%	66.40	799	1780	32.60%	1192	0.63%	-12.06%	-22.56%
HDFCBANK	782.35	-7.45	-0.94%	353.60	2781	1021	23.34%	727	7.67%	3.46%	-18.51%
HDFCLIFE	590.20	-7.10	-1.19%	56.03	332	821	28.09%	555	6.32%	-3.28%	-16.97%
HINDALCO	1072.00	10.20	0.96%	77.98	836	1080	0.71%	604	77.56%	23.69%	70.52%
HINDUNILVR	2290.00	-38.30	-1.64%	16.29	375	2750	16.73%	2023	13.23%	10.39%	-1.23%
ICICIBANK	1289.10	-25.00	-1.90%	167.68	2180	1500	14.06%	1188	8.55%	4.48%	-9.78%
INDIGO	4465.00	-96.20	-2.11%	12.62	564	6233	28.36%	3895	14.63%	8.92%	-16.40%
INFY	1151.00	-19.30	-1.65%	127.14	1469	1728	33.39%	1150	0.10%	-9.35%	-22.34%
ITC	304.25	0.40	0.13%	129.03	393	444	31.51%	287	6.01%	3.24%	-29.05%
JIOFIN	251.00	-2.64	-1.04%	219.15	553	339	25.87%	223	12.40%	7.93%	-2.68%
JSWSTEEL	1285.00	2.30	0.18%	19.03	246	1307	1.67%	935	37.43%	13.69%	21.87%
KOTAKBANK	377.25	0.45	0.12%	128.52	487	453	16.76%	346	9.19%	3.03%	-15.25%
LT	4040.00	-13.60	-0.34%	17.50	708	4440	9.01%	3230	25.07%	13.35%	21.42%
M&M	3084.80	-17.60	-0.57%	26.45	820	3840	19.66%	2831	8.96%	1.43%	5.26%
MARUTI	12890.00	-332.00	-2.51%	8.36	1088	17370	25.79%	11289	14.18%	4.04%	8.81%
MAXHEALTH	1003.90	-5.95	-0.59%	10.36	104	1314	23.62%	903	11.17%	2.95%	-8.72%
NESTLEIND	1441.60	24.30	1.71%	40.08	575	1445	0.24%	1085	32.90%	20.82%	19.83%
NTPC	407.00	-3.20	-0.78%	77.22	316	414	1.79%	316	28.98%	8.35%	12.59%
ONGC	302.00	16.10	5.63%	515.63	1531	302	0.13%	228	32.20%	7.11%	20.51%
POWERGRID	319.65	-1.25	-0.39%	90.83	290	325	1.63%	250	27.86%	8.17%	3.60%
RELIANCE	1393.00	27.20	1.99%	410.25	5663	1612	13.57%	1288	8.14%	3.33%	1.77%
SBILIFE	1808.60	-6.80	-0.37%	14.87	270	2132	15.17%	1603	12.83%	-1.58%	4.18%
SBIN	1093.40	-18.45	-1.66%	107.27	1177	1235	11.44%	756	44.73%	7.25%	33.77%
SHRIRAMFIN	952.50	-22.15	-2.27%	67.51	648	1108	14.03%	567	68.14%	5.39%	53.14%
SUNPHARMA	1749.00	15.50	0.89%	165.98	2894	1851	5.52%	1548	12.98%	-2.49%	-5.03%
TATACONSUM	1147.00	-13.50	-1.16%	16.46	189	1221	6.05%	1007	13.88%	9.39%	-0.71%
TATASTEEL	215.58	2.31	1.08%	349.40	755	218	1.22%	138	56.22%	11.57%	51.74%
TCS	2450.70	3.10	0.13%	45.08	1106	3631	32.50%	2346	4.45%	2.55%	-28.83%
TECHM	1412.50	16.40	1.17%	20.09	282	1854	23.81%	1304	8.31%	1.50%	-3.35%
TITAN	4420.00	-21.80	-0.49%	6.21	276	4554	2.94%	3246	36.19%	11.01%	31.19%
TMPV	351.20	-3.15	-0.89%	72.47	255	744	52.80%	294	19.33%	15.83%	-47.44%
TRENT	4266.00	5.20	0.12%	8.95	379	6261	31.86%	3276	30.24%	25.49%	-18.11%
ULTRACEMCO	11822.00	-188.00	-1.57%	5.09	605	13110	9.82%	10325	14.50%	7.00%	-2.41%
WIPRO	201.70	-3.35	-1.63%	234.42	477	273	26.14%	187	8.15%	5.27%	-16.13%

## Disclaimer / Disclosures

### ANALYST CERTIFICATION

I, Mrs. Vaishali Parekh B.com, Research Analyst, author and the name subscribed to this report, hereby certify that all of the views expressed in this research report accurately reflect our views about the subject issuer(s) or securities. We also certify that no part of our compensation was, is, or will be directly or indirectly related to the specific recommendation(s) or view(s) in this report.

Terms & conditions and other disclosures:

Prabhudas Lilladher Pvt. Ltd, Mumbai, India (hereinafter referred to as "PL") is engaged in the business of Stock Broking, Portfolio Manager, Depository Participant and distribution for third party financial products. PL is a subsidiary of Prabhudas Lilladher Advisory Services Pvt Ltd. which has its various subsidiaries engaged in business of commodity broking, investment banking, financial services (margin funding) and distribution of third party financial/other products, details in respect of which are available at [www.plindia.com](http://www.plindia.com)

This document has been prepared by the Research Division of PL and is meant for use by the recipient only as information and is not for circulation. This document is not to be reported or copied or made available to others without prior permission of PL. It should not be considered or taken as an offer to sell or a solicitation to buy or sell any security.

The information contained in this report has been obtained from sources that are considered to be reliable. However, PL has not independently verified the accuracy or completeness of the same. Neither PL nor any of its affiliates, its directors or its employees accepts any responsibility of whatsoever nature for the information, statements and opinion given, made available or expressed herein or for any omission therein.

Recipients of this report should be aware that past performance is not necessarily a guide to future performance and value of investments can go down as well. The suitability or otherwise of any investments will depend upon the recipient's particular circumstances and, in case of doubt, advice should be sought from an independent expert/advisor.

Either PL or its affiliates or its directors or its employees or its representatives or its clients or their relatives may have position(s), make market, act as principal or engage in transactions of securities of companies referred to in this report and they may have used the research material prior to publication.

PL may from time to time solicit or perform investment banking or other services for any company mentioned in this document.

PL is registered as Research Analyst under Securities and Exchange Board of India (Research Analysts) Regulations, 2014 PL submits that no material disciplinary action has been taken on us by any Regulatory Authority impacting Equity Research Analysis activities.

PL or its research analysts or its associates or his relatives do not have any financial interest in the subject company.

PL or its research analysts or its associates or his relatives do not have actual/beneficial ownership of one per cent or more securities of the subject company at the end of the month immediately preceding the date of publication of the research report.

PL or its research analysts or its associates or his relatives do not have any material conflict of interest at the time of publication of the research report.

PL or its associates might have received compensation from the subject company in the past twelve months.

PL or its associates might have managed or co-managed public offering of securities for the subject company in the past twelve months or mandated by the subject company for any other assignment in the past twelve months.

PL or its associates might have received any compensation for investment banking or merchant banking or brokerage services from the subject company in the past twelve months.

PL or its associates might have received any compensation for products or services other than investment banking or merchant banking or brokerage services from the subject company in the past twelve months PL or its associates might have received any compensation or other benefits from the subject company or third party in connection with the research report.

PL encourages independence in research report preparation and strives to minimize conflict in preparation of research report. PL or its analysts did not receive any compensation or other benefits from the subject Company or third party in connection with the preparation of the research report. PL or its Research Analysts do not have any material conflict of interest at the time of publication of this report.

It is confirmed that Mrs. Vaishali Parekh B.com, Research Analyst of this report has not received any compensation from the companies mentioned in the report in the preceding twelve months compensation of our Research Analysts is not based on any specific merchant banking, investment banking or brokerage service transactions.

The Research analysts for this report certifies that all of the views expressed in this report accurately reflect his or her personal views about the subject company or companies and its or their securities, and no part of his or her compensation was, is or will be, directly or indirectly related to specific recommendations or views expressed in this report.

The research analysts for this report has not served as an officer, director or employee of the subject company PL or its research analysts have not engaged in market making activity for the subject company

Our sales people, traders, and other professionals or affiliates may provide oral or written market commentary or trading strategies to our clients that reflect opinions that are contrary to the opinions expressed herein, and our proprietary trading and investing businesses may make investment decisions that are inconsistent with the recommendations expressed herein. In reviewing these materials, you should be aware that any or all of the foregoing, among other things, may give rise to real or potential conflicts of interest.

PL and its associates, their directors and employees may (a) from time to time, have a long or short position in, and buy or sell the securities of the subject company or (b) be engaged in any other transaction involving such securities and earn brokerage or other compensation or act as a market maker in the financial instruments of the subject company or act as an advisor or lender/borrower to the subject company or may have any other potential conflict of interests with respect to any recommendation and other related information and opinions.

**Regd. Office:** 3<sup>rd</sup> Floor, Sadhana House, 570, P. B. Marg, Behind Mahindra Tower, Worli, Mumbai - 400 018, India.