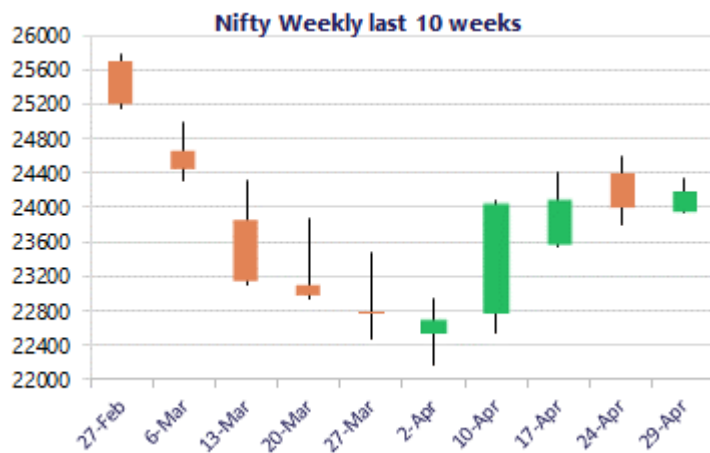
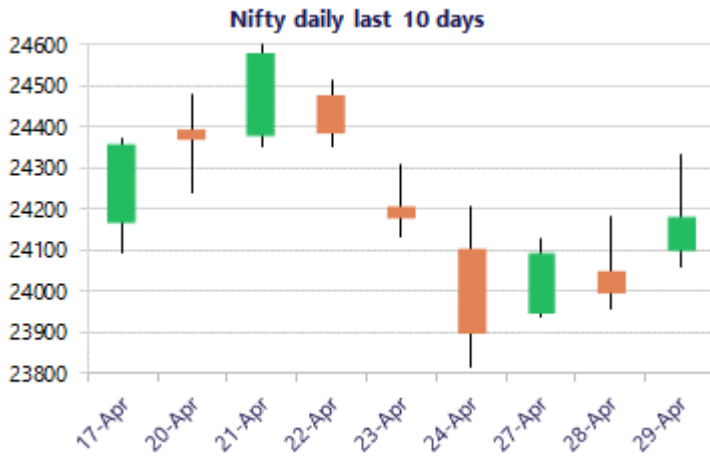


\* Sensex 77496.36 + 609.45

\* Nifty 24177.65 + 181.95

\* Bank Nifty 55403.60 + 3.25



## Market Preview

### Nifty witnesses tough hurdle at 24300 zone

Nifty continue to remain rangebound hovering near the important 50EMA zone at 24200 level with once again finding resistance near the 24300 zone and slipping down with profit booking seen. BankNifty overall has been subdued hovering below the crucial 50EMA at 56300 zone and is maintained with a cautious approach. The market breadth ended on a flat note with the advance decline indicating a neutral ratio at close.

## Market Forecast

### Nifty daily range 23900 - 24350

Nifty after consolidating near the 24000 zone, witnessed a positive morning session but once again found resistance near the tough hurdle of 24300 level and slipped down with profit booking seen to end the session near 24180 zone with bias and sentiment continue to be maintained with a cautious approach. The index is currently hovering between the crucial band of 24300 and 23800 levels for the time being and would need a decisive breach on either side to get clarity for a directional move in the coming days. BankNifty witnessed a volatile session finding resistance near the 56200 zone and with profit booking witnessed erased the gains to end on a flat note near 55400 level with bias and sentiment precariously placed awaiting for further developments in the coming sessions. As mentioned earlier, the important support at 53500 levels shall be the crucial zone which needs to be sustained in the coming sessions whereas on the upside, the 200 period MA at 57300 level would be the important hurdle which needs to be breached above decisively.

The support for the day is seen at 23900 levels, while the resistance is seen at 24350 levels. BankNifty would have the daily range of 54400-56300 levels.

\*Blue candle → Close rate > Open rate \* Red candle → Close rate < Open rate

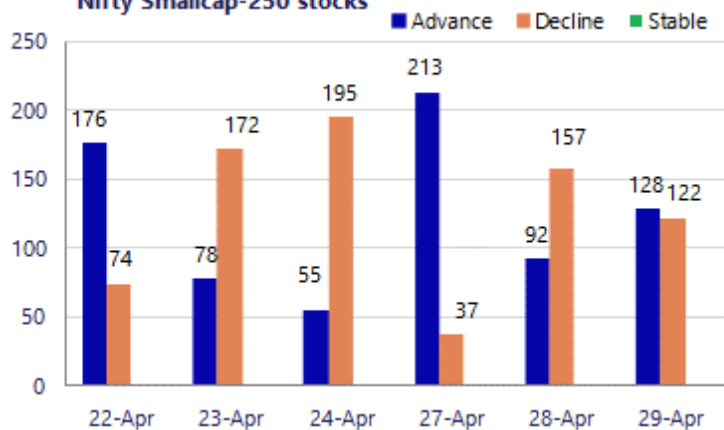
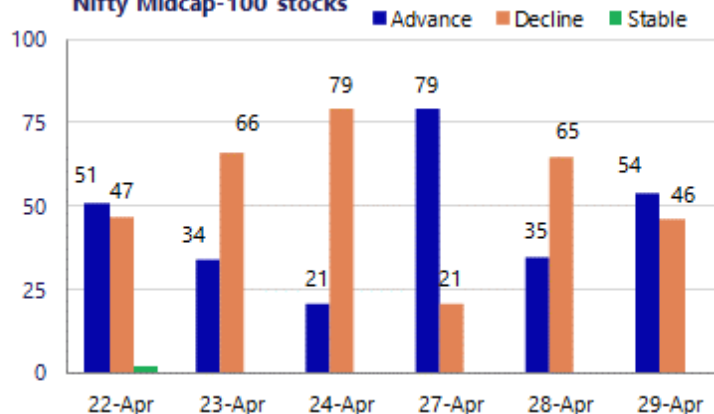
Sensex	Period	Closing	% Chng	Trend	Reversal	2 Sup	1 Sup	Pivot	1 Res	2 Res
Nifty	Daily	24177.65	0.76%	-5	24198.35	23916	24047	24191	24322	24466
	Weekly	23897.95	-1.87%	3	22690.75	23745	23821	24211	24288	24678
	Monthly	22331.40	-11.31%	-3	26623.20	20499	21415	23202	24118	25905
Bank Nifty	Daily	55403.60	0.01%	-5	56276.70	54736	55070	55624	55958	56513
	Weekly	56089.75	-0.84%	3	52676.60	55349	55719	56588	56958	57827
	Monthly	50275.35	-16.94%	-1	64512.75	43464	46870	53524	56929	63583
Sensex	Daily	77496.36	0.79%	-5	77678.80	76692	77094	77538	77941	78385
	Weekly	76681.29	-2.31%	3	72703.00	76081	76381	77874	78174	79667
	Monthly	71947.55	-11.49%	-3	85936.10	66196	69072	74852	77728	83509

**Gainers - Losers ( Nifty 500 Stocks )**
**Gainers**

Company Name	Last Price	% Gain	Volume
Bandhan Bank	198.3	11.00%	127801166
Canara HSBC	146.17	7.23%	8714396
Apar Ind	12478	5.19%	181001
Chennai Petro	1,125.00	4.91%	7682110
Ceat	3,629.00	3.19%	2335952
AB Capital	347.65	2.76%	6755313
Bikaji Foods	690.85	2.69%	166893

**Losers**

Company Name	Last Price	% Loss	Volume
ABSL AMC	1,024.10	-3.96%	809113
Billionbrains G	213.47	-2.90%	43916376
BHEL	344.50	-2.88%	14712097
Blue Star	1,837.30	-2.87%	683021
AWL Agri	200.18	-2.31%	8851269
Aegis Vopak	194.58	-2.26%	653114
Afcons Infra	326.45	-2.23%	522000

**Nifty Smallcap-250 stocks**

**Nifty Midcap-100 stocks**


### Nifty Daily chart with RSI indicator



### BankNifty Daily chart with RSI indicator

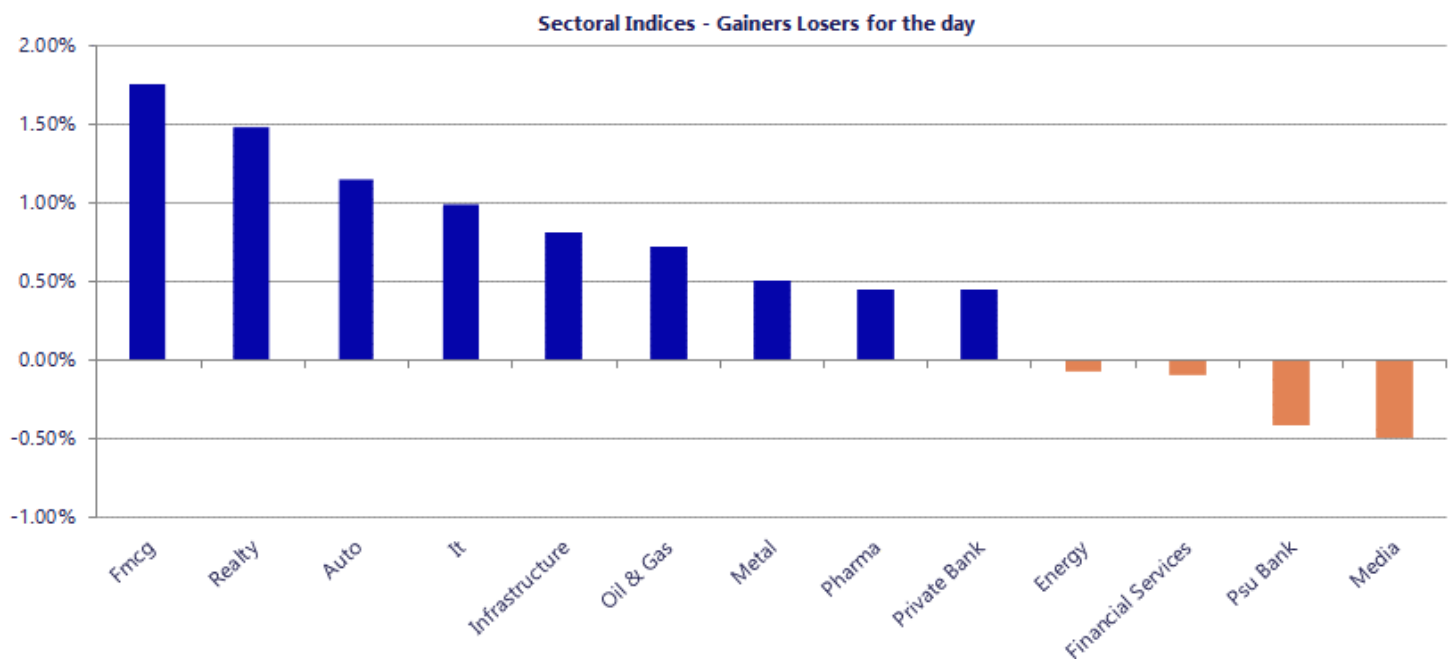


Breakouts - Cross above 200 DMA			
Company Name	LCP	Change %	200 DMA
Indo Borax	281.1	12.18	250.58
Fidel Softech	172.5	6.57	161.86
Damodar Ind	32.92	5.92	31.08
Greenply Ind	284.45	5.54	269.51
CARE Ratings	1689.4	5.53	1600.88
STEL Holdings	477.4	3.77	460.06
Cheviot Company	1142.2	3.59	1102.65
Chamunda Electr	49.5	3.06	48.03
Ugar Sugar Work	42.48	2.48	41.45
Deepak Nitrite	1724.1	2.43	1683.15
LIC Housing Fin	562.15	2.11	550.53
Elgi Rubber	53.95	2.10	52.84
SecMark Consult	122.44	1.82	120.25
Harsha Engineer	393.7	1.57	387.6
Karma Energy	51.81	1.33	51.13
Shree Rama News	32.12	1.29	31.71
Steel Str Wheel	215.53	1.21	212.95
M&M Financial	320.2	1.19	316.44

\* Stocks crossing above its Simple Moving Average (200DMA)

Breakdown - Cross below 200 DMA			
Company Name	LCP	Change %	200 DMA
Poddar Pigments	253.11	-3.98	263.6
JSW Infra	273.14	-3.87	284.14
HEC Infra Proje	129.37	-2.84	133.15
Sanathan Textil	451.8	-2.54	463.58
DNL	141.38	-2.48	144.98
Zodiac Energy	332.69	-1.86	338.99
Hester Bio	1655.6	-1.79	1685.69
Olectra Greente	1256.85	-1.78	1279.6
Bosch	36345	-1.70	36973.08
Hexa Tradex	166.51	-1.70	169.39
Superhouse	153.83	-1.68	156.46
Nuvama Wealth	1346	-1.62	1368.17
KDDL	2423.2	-1.39	2457.36
Prakash Ind	144.68	-1.34	146.64
MYMUDRA	81.45	-1.34	82.56
LMW	14735	-1.23	14917.76
Master Compo.	339	-1.21	343.16
Delta Corp	72.43	-0.96	73.13

\* Stocks crossing below its Simple Moving Average (200DMA)



Nifty 50 Stocks - Summary Details											
Symbol	LTP	Chng	% Chng	Volume (lacs)	Turnover (crs.)	52w High	Diff with 52w H	52w Low	Diff with 52w L	365 days % chng	30 days % chng
NIFTY 50	24177.65	181.95	0.76%	5310.45	38031	26373	8.32%	22183	8.99%	5.95%	-0.65%
ADANIENT	2415.00	2.60	0.11%	46.57	1129	2617	7.70%	1753	37.76%	32.47%	6.73%
ADANIPTS	1655.00	17.40	1.06%	23.44	389	1672	1.02%	1181	40.11%	23.71%	36.06%
APOLLOHOSP	7718.50	-34.50	-0.44%	3.21	248	8100	4.70%	6678	15.59%	2.25%	10.38%
ASIANPAINT	2451.60	-11.00	-0.45%	6.04	148	2986	17.89%	2115	15.91%	11.06%	0.02%
AXISBANK	1290.60	1.60	0.12%	62.28	806	1418	9.00%	1043	23.80%	7.09%	8.70%
BAJAJ-AUTO	9520.50	25.00	0.26%	2.62	251	10187	6.54%	7612	25.07%	6.96%	17.85%
BAJAJFINSV	1760.80	-18.20	-1.02%	7.00	124	2195	19.78%	1597	10.26%	3.90%	-14.81%
BAJFINANCE	932.80	9.15	0.99%	54.38	505	1103	15.39%	788	18.39%	10.55%	2.58%
BEL	437.70	1.95	0.45%	95.00	417	473	7.55%	294	49.03%	8.14%	38.03%
BHARTIARTL	1885.80	42.00	2.28%	77.12	1455	2175	13.28%	1747	7.95%	2.27%	3.40%
CIPLA	1313.20	6.70	0.51%	9.86	130	1673	21.51%	1166	12.65%	5.71%	-14.81%
COALINDIA	480.70	13.70	2.93%	180.62	866	486	1.03%	369	30.39%	8.01%	23.54%
DRREDDY	1327.70	-26.90	-1.99%	45.46	611	1380	3.77%	1129	17.56%	3.59%	12.90%
EICHERMOT	7185.00	113.50	1.61%	5.23	378	8230	12.70%	5220	37.66%	5.48%	28.79%
ETERNAL	253.47	0.40	0.16%	1521.33	3919	368	31.21%	213	19.22%	8.71%	9.68%
GRASIM	2800.00	17.00	0.61%	9.77	275	2979	6.01%	2503	11.89%	6.54%	1.98%
HCLTECH	1198.00	2.00	0.17%	47.76	574	1780	32.70%	1192	0.49%	-12.20%	-23.65%
HDFCBANK	778.30	-4.25	-0.54%	257.96	2022	1021	23.73%	727	7.11%	2.92%	-18.45%
HDFCLIFE	595.50	5.35	0.91%	68.69	412	821	27.44%	555	7.28%	-2.41%	-16.72%
HINDALCO	1069.75	-4.55	-0.42%	37.10	396	1080	0.95%	604	77.18%	23.43%	71.83%
HINDUNILVR	2317.10	27.60	1.21%	17.79	413	2750	15.74%	2023	14.57%	11.70%	-0.20%
ICICIBANK	1279.50	-12.50	-0.97%	117.15	1508	1500	14.70%	1188	7.74%	3.70%	-10.51%
INDIGO	4340.00	-102.40	-2.31%	16.96	745	6233	30.37%	3895	11.42%	5.87%	-17.55%
INFY	1167.10	15.00	1.30%	82.99	972	1728	32.46%	1150	1.50%	-8.08%	-22.06%
ITC	316.00	11.55	3.79%	311.91	979	444	28.86%	287	10.10%	7.23%	-25.82%
JIOFIN	250.70	-0.11	-0.04%	224.37	569	339	25.96%	223	12.27%	7.80%	-2.69%
JSWSTEEL	1278.00	-3.60	-0.28%	23.64	302	1307	2.20%	935	36.68%	13.07%	23.41%
KOTAKBANK	382.00	4.05	1.07%	79.13	303	453	15.71%	346	10.56%	4.33%	-13.38%
LT	4083.00	45.30	1.12%	21.75	892	4440	8.04%	3230	26.40%	14.56%	22.90%
M&M	3149.00	60.90	1.97%	39.17	1239	3840	17.99%	2831	11.23%	3.54%	8.23%
MARUTI	13265.00	373.00	2.89%	7.55	1012	17370	23.63%	11289	17.50%	7.07%	12.03%
MAXHEALTH	1004.00	-0.75	-0.07%	18.70	190	1314	23.61%	903	11.18%	2.96%	-9.34%
NESTLEIND	1461.20	21.20	1.47%	27.52	401	1470	0.60%	1085	34.71%	22.46%	22.40%
NTPC	400.10	-6.75	-1.66%	119.20	482	414	3.45%	316	26.79%	6.51%	12.09%
ONGC	302.00	0.70	0.23%	272.67	829	308	1.79%	228	32.20%	7.11%	22.92%
POWERGRID	320.00	1.00	0.31%	103.72	333	325	1.52%	250	28.00%	8.29%	5.63%
RELIANCE	1430.00	41.10	2.96%	305.39	4331	1612	11.28%	1288	11.02%	6.08%	2.16%
SBILIFE	1819.00	10.70	0.59%	14.31	260	2132	14.68%	1603	13.47%	-1.01%	5.14%
SBIN	1088.40	-2.90	-0.27%	106.11	1162	1235	11.85%	756	44.06%	6.76%	33.95%
SHRIRAMFIN	956.70	3.45	0.36%	58.29	562	1108	13.66%	567	68.88%	5.85%	55.64%
SUNPHARMA	1773.00	25.70	1.47%	98.09	1727	1851	4.22%	1548	14.53%	-1.15%	-1.80%
TATACONSUM	1171.00	23.30	2.03%	13.46	157	1221	4.09%	1007	16.26%	11.68%	0.18%
TATASTEEL	215.99	0.94	0.44%	327.99	706	218	1.03%	138	56.51%	11.78%	52.64%
TCS	2465.00	20.30	0.83%	28.36	702	3631	32.10%	2346	5.06%	3.15%	-29.01%
TECHM	1454.70	46.60	3.31%	33.35	485	1854	21.54%	1304	11.55%	4.53%	-2.72%
TITAN	4439.90	22.90	0.52%	7.03	312	4554	2.51%	3246	36.80%	11.51%	31.41%
TMPV	352.25	1.45	0.41%	105.80	378	744	52.65%	294	19.69%	16.18%	-47.08%
TRENT	4225.00	-28.90	-0.68%	6.44	274	6261	32.52%	3276	28.99%	24.28%	-21.64%
ULTRACEMCO	11830.00	13.00	0.11%	3.62	432	13110	9.76%	10325	14.58%	7.07%	-0.33%
WIPRO	200.97	-0.61	-0.30%	156.57	316	273	26.41%	187	7.76%	4.89%	-16.75%

## Disclaimer / Disclosures

### ANALYST CERTIFICATION

I, Mrs. Vaishali Parekh B.com, Research Analyst, author and the name subscribed to this report, hereby certify that all of the views expressed in this research report accurately reflect our views about the subject issuer(s) or securities. We also certify that no part of our compensation was, is, or will be directly or indirectly related to the specific recommendation(s) or view(s) in this report.

Terms & conditions and other disclosures:

Prabhudas Lilladher Pvt. Ltd, Mumbai, India (hereinafter referred to as "PL") is engaged in the business of Stock Broking, Portfolio Manager, Depository Participant and distribution for third party financial products. PL is a subsidiary of Prabhudas Lilladher Advisory Services Pvt Ltd. which has its various subsidiaries engaged in business of commodity broking, investment banking, financial services (margin funding) and distribution of third party financial/other products, details in respect of which are available at [www.plindia.com](http://www.plindia.com)

This document has been prepared by the Research Division of PL and is meant for use by the recipient only as information and is not for circulation. This document is not to be reported or copied or made available to others without prior permission of PL. It should not be considered or taken as an offer to sell or a solicitation to buy or sell any security.

The information contained in this report has been obtained from sources that are considered to be reliable. However, PL has not independently verified the accuracy or completeness of the same. Neither PL nor any of its affiliates, its directors or its employees accepts any responsibility of whatsoever nature for the information, statements and opinion given, made available or expressed herein or for any omission therein.

Recipients of this report should be aware that past performance is not necessarily a guide to future performance and value of investments can go down as well. The suitability or otherwise of any investments will depend upon the recipient's particular circumstances and, in case of doubt, advice should be sought from an independent expert/advisor.

Either PL or its affiliates or its directors or its employees or its representatives or its clients or their relatives may have position(s), make market, act as principal or engage in transactions of securities of companies referred to in this report and they may have used the research material prior to publication.

PL may from time to time solicit or perform investment banking or other services for any company mentioned in this document.

PL is registered as Research Analyst under Securities and Exchange Board of India (Research Analysts) Regulations, 2014 PL submits that no material disciplinary action has been taken on us by any Regulatory Authority impacting Equity Research Analysis activities.

PL or its research analysts or its associates or his relatives do not have any financial interest in the subject company.

PL or its research analysts or its associates or his relatives do not have actual/beneficial ownership of one per cent or more securities of the subject company at the end of the month immediately preceding the date of publication of the research report.

PL or its research analysts or its associates or his relatives do not have any material conflict of interest at the time of publication of the research report.

PL or its associates might have received compensation from the subject company in the past twelve months.

PL or its associates might have managed or co-managed public offering of securities for the subject company in the past twelve months or mandated by the subject company for any other assignment in the past twelve months.

PL or its associates might have received any compensation for investment banking or merchant banking or brokerage services from the subject company in the past twelve months.

PL or its associates might have received any compensation for products or services other than investment banking or merchant banking or brokerage services from the subject company in the past twelve months PL or its associates might have received any compensation or other benefits from the subject company or third party in connection with the research report.

PL encourages independence in research report preparation and strives to minimize conflict in preparation of research report. PL or its analysts did not receive any compensation or other benefits from the subject Company or third party in connection with the preparation of the research report. PL or its Research Analysts do not have any material conflict of interest at the time of publication of this report.

It is confirmed that Mrs. Vaishali Parekh B.com, Research Analyst of this report has not received any compensation from the companies mentioned in the report in the preceding twelve months compensation of our Research Analysts is not based on any specific merchant banking, investment banking or brokerage service transactions.

The Research analysts for this report certifies that all of the views expressed in this report accurately reflect his or her personal views about the subject company or companies and its or their securities, and no part of his or her compensation was, is or will be, directly or indirectly related to specific recommendations or views expressed in this report.

The research analysts for this report has not served as an officer, director or employee of the subject company PL or its research analysts have not engaged in market making activity for the subject company

Our sales people, traders, and other professionals or affiliates may provide oral or written market commentary or trading strategies to our clients that reflect opinions that are contrary to the opinions expressed herein, and our proprietary trading and investing businesses may make investment decisions that are inconsistent with the recommendations expressed herein. In reviewing these materials, you should be aware that any or all of the foregoing, among other things, may give rise to real or potential conflicts of interest.

PL and its associates, their directors and employees may (a) from time to time, have a long or short position in, and buy or sell the securities of the subject company or (b) be engaged in any other transaction involving such securities and earn brokerage or other compensation or act as a market maker in the financial instruments of the subject company or act as an advisor or lender/borrower to the subject company or may have any other potential conflict of interests with respect to any recommendation and other related information and opinions.

**Regd. Office:** 3<sup>rd</sup> Floor, Sadhana House, 570, P. B. Marg, Behind Mahindra Tower, Worli, Mumbai - 400 018, India.