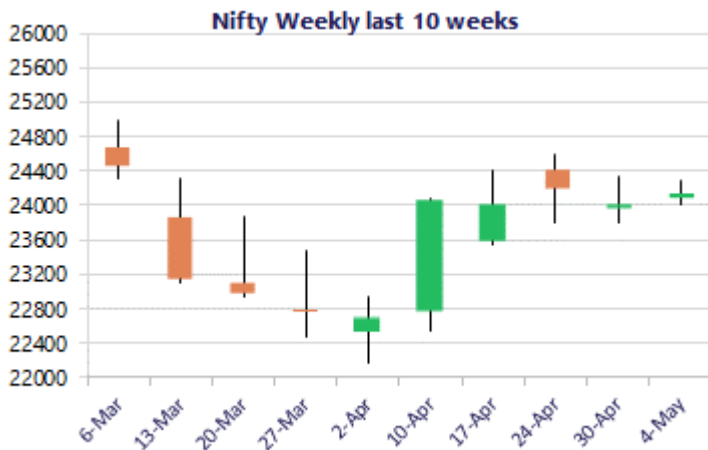
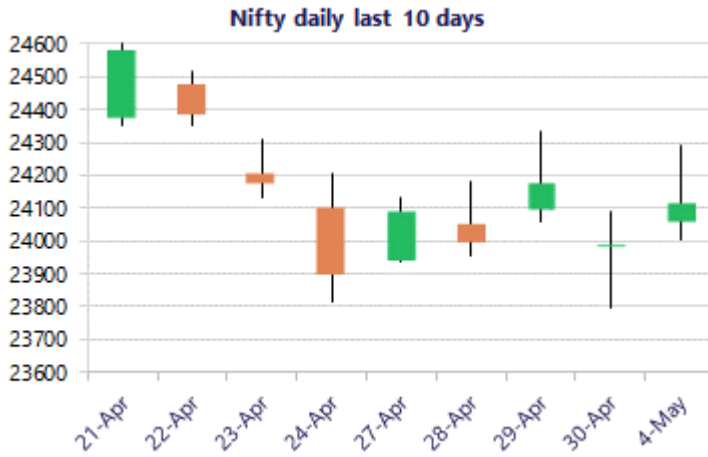


\* Sensex 77269.40 + 355.90

\* Nifty 24119.30 + 121.75

\* Bank Nifty 54878.50 + 15.15



\*Blue candle → Close rate > Open rate \* Red candle → Close rate < Open rate

## Market Preview

### Nifty consolidates near the 50EMA at 24200 zone

Nifty wiped off the gains witnessed in the morning session once again finding tough resistance near the 24300 zone to end near the 24100 level overall to consolidate near the 50EMA zone. BankNifty fizzled out after the positive opening to end on a flat note with crucial support positioned near the 54400 zone. The market breadth was positive with the advance decline indicating a ratio of 2:1 at close.

## Market Forecast

### Nifty daily range 23900 - 24300

Nifty after witnessing the strong opening session fizzled out once again from the tough resistance barrier at 24300 level and closed near the 24100 zone with bias maintained with a cautiously positive approach as of now. As mentioned earlier, the index would need to decisively breach above the tough hurdle of 24300 level to establish conviction and stability and thereafter can expect for further rise in the coming days. On the downside, the 23800 level shall be positioned as the important near-term support which needs to be sustained.

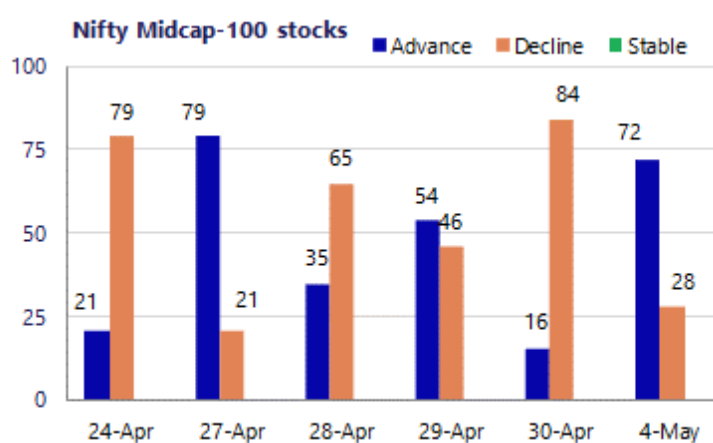
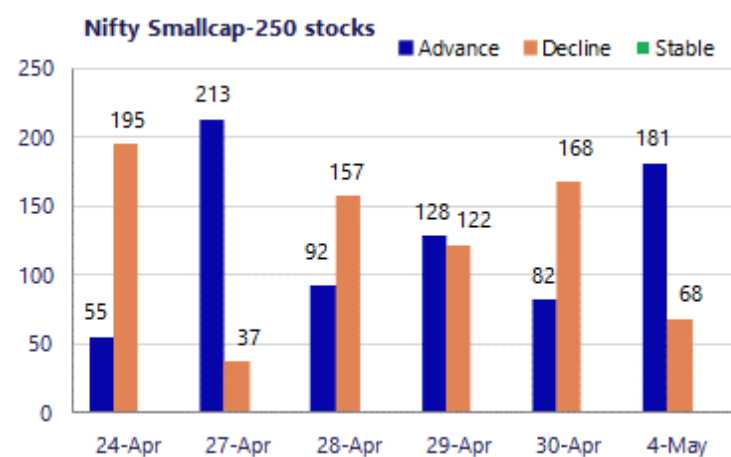
BankNifty opened on a positive note but could not sustain above the 55600-zone finding resistance and slipped down as the day progressed to end on a flat note near 54900 level with bias maintained positive with a cautious approach having the important near-term support at 54400 level which needs to be sustained as of now. As mentioned earlier, the important support at 53500 levels shall be the crucial zone whereas on the upside, the 50EMA at 56100 level would be the important hurdle which needs to be breached above decisively.

The support for the day is seen at 23900 levels, while the resistance is seen at 24300 levels. BankNifty would have the daily range of 54000-56000 levels.

Sensex	Period	Closing	% Chng	Trend	Reversal	2 Sup	1 Sup	Pivot	1 Res	2 Res
	Daily	24119.30	0.51%	1	24078.15	23853	23986	24138	24271	24424
Nifty	Weekly	23997.55	0.42%	4	23066.60	23691	23844	24089	24243	24488
	Monthly	23997.55	7.46%	-4	26009.10	21175	22586	23594	25005	26013
Bank Nifty	Daily	54878.50	0.03%	-7	55486.85	54189	54534	55068	55413	55947
	Weekly	54863.35	-2.19%	4	53420.50	54323	54593	55534	55804	56745
	Monthly	54863.35	9.13%	-2	62653.00	46590	50727	54092	58228	61593
Sensex	Daily	77269.40	0.46%	-7	77171.70	76402	76836	77373	77807	78344
	Weekly	76913.50	0.30%	4	73991.30	75971	76442	77212	77684	78454
	Monthly	76913.50	6.90%	-4	83783.80	68121	72517	75942	80338	83763

**Gainers - Losers ( Nifty 500 Stocks )**

Gainers				Losers			
Company Name	Last Price	% Gain	Volume	Company Name	Last Price	% Loss	Volume
BHEL	377.05	6.99%	104949014	Avenue Supermar	4,376.50	-4.57%	1358783
Aster DM Health	744.85	6.25%	11163650	Ceat	3305.1	-4.07%	479559
Adani Green Ene	1290.7	5.18%	6303411	Bharti Airtel	1,827.10	-3.16%	10706935
Adani Ports	1,742.60	5.15%	7169853	CDSL	1,238.30	-2.65%	4738383
Anant Raj	510.35	4.82%	2860756	Bharat Forge	1,845.80	-1.90%	1030379
AWL Agri	205.30	4.55%	4041558	ACC	1398.2	-1.68%	509550
Adani Energy	1,398.40	4.18%	3745037	APL Apollo	1873	-1.68%	2345721



### Nifty Daily chart with RSI indicator



### BankNifty Daily chart with RSI indicator



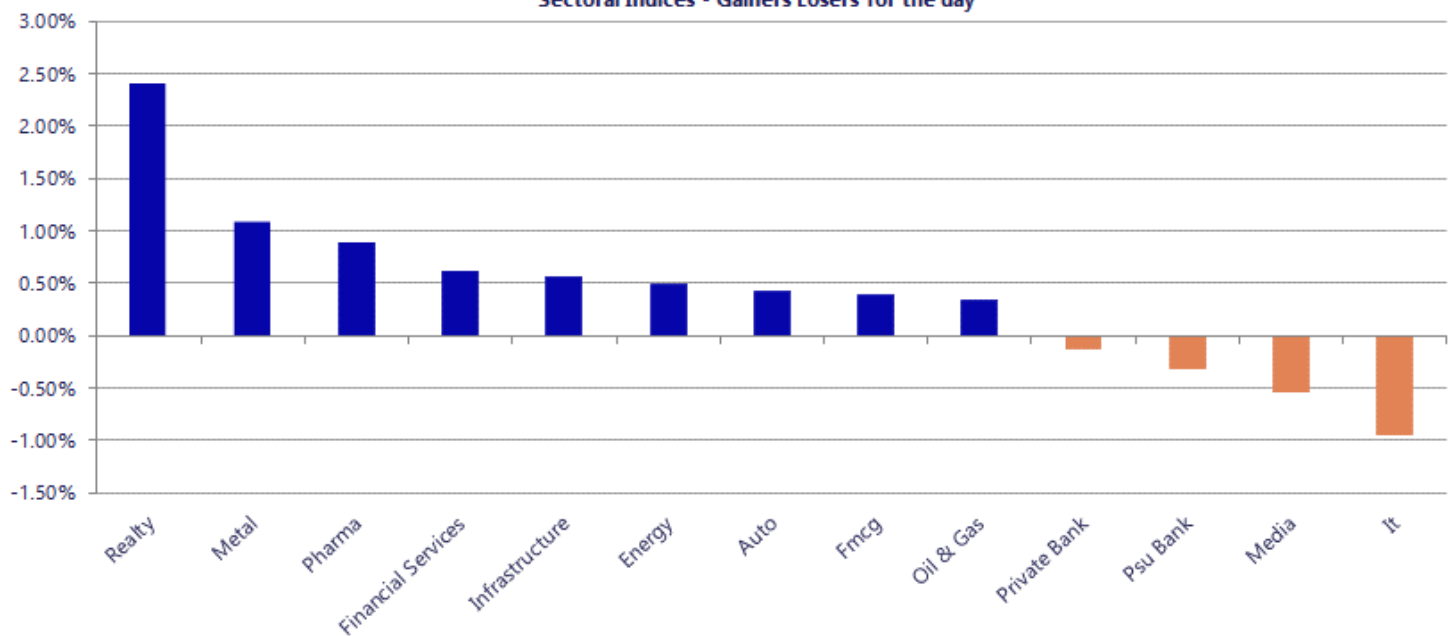
Breakouts - Cross above 200 DMA			
Company Name	LCP	Change %	200 DMA
DNL	171	18.25	144.61
Mangalam Organ	547.7	13.30	483.39
Innova Captab	850.5	10.06	772.75
Vindhya Telelin	1470	7.35	1369.32
Vardhman Acryli	42.87	7.15	40.01
Shriram Propert	91	6.87	85.15
Electrosteel	91.1	6.09	85.87
Interarch Build	2202.4	4.71	2103.41
Dr Lal PathLab	1564	4.59	1495.34
MMP Industries	269.47	4.49	257.89
Plastiblends	176	4.30	168.75
Sahyadri Ind	270	4.04	259.52
Shiva Texyarn	181	3.80	174.38
Swelect Energy	693.15	3.53	669.51
B&B Triplewall	198.4	3.35	191.97
Indegene	538.85	3.28	521.75
Vdeal System	190	3.01	184.45
Hindustan Aeron	4558.5	2.91	4429.6

\* Stocks crossing above its Simple Moving Average (200DMA)

Breakdown - Cross below 200 DMA			
Company Name	LCP	Change %	200 DMA
Thaai Casting	94	-10.68	105.24
Nikita Greentec	109.95	-8.51	120.18
Kontor Space	68.95	-4.57	72.25
Rajgor Castor	22.05	-3.71	22.9
Elgi Rubber	51.3	-2.82	52.79
Nureca	259.65	-2.51	266.34
Likhitha	207	-1.73	210.65
Industrial Inv	161	-1.62	163.65
Sandesh	1081.4	-1.60	1099.02
Mask Investment	152.4	-1.33	154.45
ABGSEC	109.93	-0.89	110.92
Bannariamman	3601	-0.77	3628.85
N R Vandana Tex	53.5	-0.69	53.87
Bajel Projects	185.28	-0.66	186.52
Shree Rama News	31.57	-0.44	31.71
Embassy Office	419.9	-0.31	421.2
Mazagon	2616.9	-0.28	2624.31
D-Link India	447	-0.26	448.15

\* Stocks crossing below its Simple Moving Average (200DMA)

Sectoral Indices - Gainers Losers for the day



Nifty 50 Stocks - Summary Details											
Symbol	LTP	Chng	% Chng	Volume (lacs)	Turnover (crs.)	52w High	Diff with 52w H	52w Low	Diff with 52w L	365 days % chng	30 days % chng
NIFTY 50	24119.30	121.75	0.51%	4190.04	35784	26373	8.55%	22183	8.73%	6.19%	-0.93%
ADANIENT	2473.00	64.60	2.68%	60.39	1489	2617	5.48%	1753	41.07%	34.83%	11.03%
ADANIPTS	1747.00	89.70	5.41%	71.71	1236	1749	0.09%	1204	45.11%	26.81%	37.87%
APOLLOHOSP	7748.00	111.50	1.46%	3.28	254	8100	4.34%	6678	16.03%	5.88%	11.41%
ASIANPAINT	2448.00	3.50	0.14%	5.81	144	2986	18.01%	2115	15.74%	12.86%	1.59%
AXISBANK	1277.50	9.20	0.73%	97.59	1246	1418	9.93%	1043	22.54%	6.64%	8.06%
BAJAJ-AUTO	10151.00	157.00	1.57%	7.22	741	10478	3.12%	7612	33.36%	15.90%	29.53%
BAJAJFINSV	1778.00	30.80	1.76%	17.20	304	2195	19.00%	1597	11.33%	8.37%	-9.19%
BAJFINANCE	950.00	13.00	1.39%	75.04	714	1103	13.83%	788	20.57%	14.89%	7.19%
BEL	433.50	2.20	0.51%	107.63	468	473	8.44%	305	42.22%	2.82%	39.23%
BHARTIARTL	1828.00	-58.80	-3.12%	107.08	1980	2175	15.93%	1747	4.64%	2.14%	-1.29%
CIPLA	1335.00	25.40	1.94%	10.89	145	1673	20.20%	1166	14.52%	11.96%	-12.49%
COALINDIA	480.00	-1.45	-0.30%	77.57	373	491	2.29%	369	30.20%	6.82%	24.87%
DRREDDY	1288.40	-34.50	-2.61%	22.85	295	1380	6.62%	1129	14.08%	5.84%	8.92%
EICHERMOT	7330.00	221.00	3.11%	6.84	496	8230	10.94%	5220	40.43%	10.23%	34.80%
ETERNAL	251.86	4.83	1.96%	408.76	1019	368	31.64%	213	18.47%	8.69%	7.50%
GRASIM	2850.00	55.50	1.99%	9.78	278	2979	4.33%	2503	13.89%	11.15%	4.84%
HCLTECH	1200.00	0.90	0.08%	33.19	398	1780	32.59%	1184	1.35%	-14.42%	-23.88%
HDFCBANK	779.50	7.80	1.01%	290.27	2263	1021	23.62%	727	7.27%	3.81%	-19.01%
HDFCLIFE	587.50	0.60	0.10%	25.92	153	821	28.42%	555	5.84%	3.78%	-19.27%
HINDALCO	1043.90	5.90	0.57%	33.49	349	1080	3.34%	604	72.90%	13.93%	65.15%
HINDUNILVR	2307.00	56.10	2.49%	25.39	591	2750	16.11%	2023	14.07%	11.70%	-0.73%
ICICIBANK	1269.00	5.60	0.44%	145.97	1858	1500	15.40%	1188	6.85%	4.38%	-11.41%
INDIGO	4239.00	-56.30	-1.31%	10.48	450	6233	31.99%	3895	8.83%	1.09%	-20.68%
INFY	1168.00	-13.80	-1.17%	77.34	909	1728	32.41%	1150	1.58%	-10.21%	-22.48%
ITC	311.40	-3.50	-1.11%	202.38	635	444	29.90%	287	8.50%	6.33%	-27.62%
JIOFIN	253.70	7.33	2.98%	178.21	448	339	25.07%	223	13.61%	10.55%	-1.97%
JSWSTEEL	1266.40	1.90	0.15%	15.50	197	1307	3.09%	935	35.44%	10.96%	30.13%
KOTAKBANK	371.10	-12.20	-3.18%	744.65	2776	453	18.12%	346	7.41%	3.66%	-15.09%
LT	4099.80	85.80	2.14%	21.73	893	4440	7.66%	3284	24.84%	13.47%	23.12%
M&M	3109.90	12.40	0.40%	28.73	897	3840	19.01%	2887	7.72%	3.26%	6.28%
MARUTI	13570.00	256.00	1.92%	7.22	989	17370	21.88%	11800	15.00%	7.43%	9.38%
MAXHEALTH	1013.30	20.25	2.04%	26.06	263	1314	22.90%	903	12.21%	7.27%	-7.02%
NESTLEIND	1457.00	-1.60	-0.11%	17.44	255	1473	1.08%	1085	34.32%	22.30%	24.65%
NTPC	400.15	1.00	0.25%	63.33	254	414	3.44%	316	26.81%	11.26%	14.84%
ONGC	292.90	-6.65	-2.22%	154.67	455	308	4.75%	228	28.21%	1.98%	20.33%
POWERGRID	319.65	1.30	0.41%	73.69	236	325	1.63%	250	27.86%	10.24%	5.17%
RELIANCE	1467.20	36.40	2.54%	240.33	3494	1612	8.97%	1290	13.74%	8.64%	3.15%
SBILIFE	1821.10	2.10	0.12%	19.30	353	2132	14.58%	1693	7.56%	2.66%	3.20%
SBIN	1067.50	-1.00	-0.09%	116.93	1259	1235	13.54%	756	41.30%	4.82%	33.44%
SHRIRAMFIN	961.00	23.65	2.52%	40.18	386	1108	13.27%	567	69.64%	7.78%	59.05%
SUNPHARMA	1822.40	14.10	0.78%	42.06	766	1851	1.56%	1548	17.73%	7.61%	-0.38%
TATACONSUM	1157.10	12.50	1.09%	13.14	153	1221	5.23%	1007	14.88%	11.05%	0.03%
TATASTEEL	212.00	0.64	0.30%	231.40	493	218	2.86%	138	53.62%	9.20%	50.16%
TCS	2430.00	-43.90	-1.77%	26.32	643	3631	33.07%	2346	3.57%	-0.84%	-29.46%
TECHM	1471.00	-2.50	-0.17%	14.84	218	1854	20.66%	1304	12.80%	2.05%	-1.69%
TITAN	4360.00	-25.20	-0.57%	7.09	311	4554	4.26%	3246	34.34%	6.41%	30.50%
TMPV	343.40	1.85	0.54%	77.35	265	744	53.84%	294	16.68%	13.22%	-47.33%
TRENT	4159.00	14.40	0.35%	6.81	281	6261	33.57%	3276	26.97%	17.14%	-19.21%
ULTRACEMCO	11730.00	144.00	1.24%	4.61	540	13110	10.53%	10325	13.61%	10.45%	0.74%
WIPRO	200.91	0.26	0.13%	84.40	170	273	26.43%	187	7.73%	3.08%	-17.28%

## Disclaimer / Disclosures

### ANALYST CERTIFICATION

I, Mrs. Vaishali Parekh B.com, Research Analyst, author and the name subscribed to this report, hereby certify that all of the views expressed in this research report accurately reflect our views about the subject issuer(s) or securities. We also certify that no part of our compensation was, is, or will be directly or indirectly related to the specific recommendation(s) or view(s) in this report.

Terms & conditions and other disclosures:

Prabhudas Lilladher Pvt. Ltd, Mumbai, India (hereinafter referred to as "PL") is engaged in the business of Stock Broking, Portfolio Manager, Depository Participant and distribution for third party financial products. PL is a subsidiary of Prabhudas Lilladher Advisory Services Pvt Ltd. which has its various subsidiaries engaged in business of commodity broking, investment banking, financial services (margin funding) and distribution of third party financial/other products, details in respect of which are available at [www.plindia.com](http://www.plindia.com)

This document has been prepared by the Research Division of PL and is meant for use by the recipient only as information and is not for circulation. This document is not to be reported or copied or made available to others without prior permission of PL. It should not be considered or taken as an offer to sell or a solicitation to buy or sell any security.

The information contained in this report has been obtained from sources that are considered to be reliable. However, PL has not independently verified the accuracy or completeness of the same. Neither PL nor any of its affiliates, its directors or its employees accepts any responsibility of whatsoever nature for the information, statements and opinion given, made available or expressed herein or for any omission therein.

Recipients of this report should be aware that past performance is not necessarily a guide to future performance and value of investments can go down as well. The suitability or otherwise of any investments will depend upon the recipient's particular circumstances and, in case of doubt, advice should be sought from an independent expert/advisor.

Either PL or its affiliates or its directors or its employees or its representatives or its clients or their relatives may have position(s), make market, act as principal or engage in transactions of securities of companies referred to in this report and they may have used the research material prior to publication.

PL may from time to time solicit or perform investment banking or other services for any company mentioned in this document.

PL is registered as Research Analyst under Securities and Exchange Board of India (Research Analysts) Regulations, 2014 PL submits that no material disciplinary action has been taken on us by any Regulatory Authority impacting Equity Research Analysis activities.

PL or its research analysts or its associates or his relatives do not have any financial interest in the subject company.

PL or its research analysts or its associates or his relatives do not have actual/beneficial ownership of one per cent or more securities of the subject company at the end of the month immediately preceding the date of publication of the research report.

PL or its research analysts or its associates or his relatives do not have any material conflict of interest at the time of publication of the research report.

PL or its associates might have received compensation from the subject company in the past twelve months.

PL or its associates might have managed or co-managed public offering of securities for the subject company in the past twelve months or mandated by the subject company for any other assignment in the past twelve months.

PL or its associates might have received any compensation for investment banking or merchant banking or brokerage services from the subject company in the past twelve months.

PL or its associates might have received any compensation for products or services other than investment banking or merchant banking or brokerage services from the subject company in the past twelve months PL or its associates might have received any compensation or other benefits from the subject company or third party in connection with the research report.

PL encourages independence in research report preparation and strives to minimize conflict in preparation of research report. PL or its analysts did not receive any compensation or other benefits from the subject Company or third party in connection with the preparation of the research report. PL or its Research Analysts do not have any material conflict of interest at the time of publication of this report.

It is confirmed that Mrs. Vaishali Parekh B.com, Research Analyst of this report has not received any compensation from the companies mentioned in the report in the preceding twelve months compensation of our Research Analysts is not based on any specific merchant banking, investment banking or brokerage service transactions.

The Research analysts for this report certifies that all of the views expressed in this report accurately reflect his or her personal views about the subject company or companies and its or their securities, and no part of his or her compensation was, is or will be, directly or indirectly related to specific recommendations or views expressed in this report.

The research analysts for this report has not served as an officer, director or employee of the subject company PL or its research analysts have not engaged in market making activity for the subject company

Our sales people, traders, and other professionals or affiliates may provide oral or written market commentary or trading strategies to our clients that reflect opinions that are contrary to the opinions expressed herein, and our proprietary trading and investing businesses may make investment decisions that are inconsistent with the recommendations expressed herein. In reviewing these materials, you should be aware that any or all of the foregoing, among other things, may give rise to real or potential conflicts of interest.

PL and its associates, their directors and employees may (a) from time to time, have a long or short position in, and buy or sell the securities of the subject company or (b) be engaged in any other transaction involving such securities and earn brokerage or other compensation or act as a market maker in the financial instruments of the subject company or act as an advisor or lender/borrower to the subject company or may have any other potential conflict of interests with respect to any recommendation and other related information and opinions.

**Regd. Office:** 3<sup>rd</sup> Floor, Sadhana House, 570, P. B. Marg, Behind Mahindra Tower, Worli, Mumbai - 400 018, India.