

* Sensex 77017.79 -251.61

* Nifty 24032.80 -86.50

* Bank Nifty 54547.05 -331.45

Market Preview

Nifty consolidates near 24000 zone

Nifty witnessed some fluctuations during the intraday session recovering from the 23900 zone to close near the 24000 zone with bias maintained with a cautious approach. BankNifty has been gradually slipping down closing near the crucial support zone of 54400 level with bias getting weaker. The market breadth was slightly weak with the advance decline indicating a ratio of 5:6 at close.

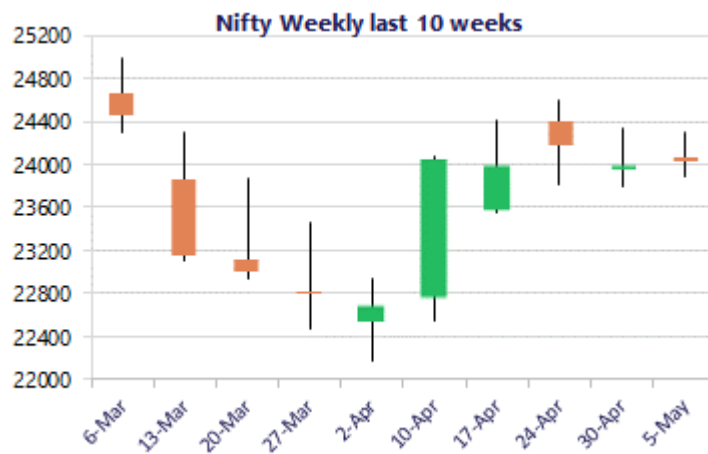
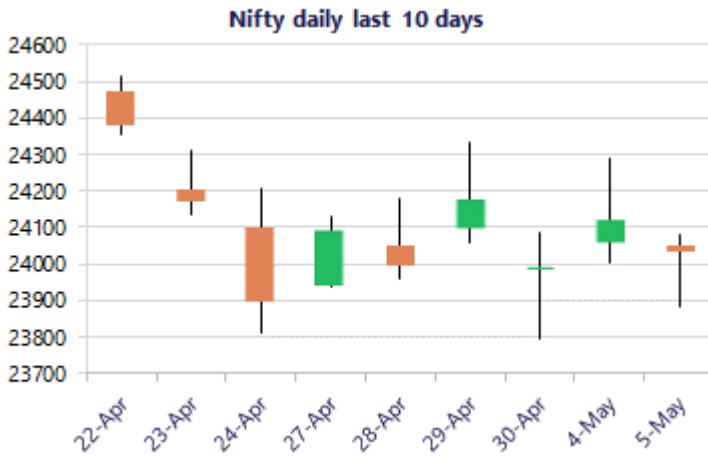
Market Forecast

Nifty daily range 23800 - 24300

Nifty amid volatility continue to hover near the 24000 zone with 24300 zone acting as the tough resistance barrier which needs to be breached decisively to establish conviction, whereas on the downside, the 23800 level shall be positioned as the important near-term support which needs to be sustained. The overall bias is maintained positive but with a cautious approach amid the geo-political tensions once again haunting the market sentiments from time to time.

BankNifty opened on a weak note and is currently precariously placed with bias turning weak and the important near-term support at 54400 level is under threat which needs to be sustained, failing which can trigger for fresh selling pressure with next crucial support positioned at 53500 levels. As mentioned earlier, on the upside, the 50EMA at 56100 level would be the important hurdle which needs to be breached above decisively to establish conviction and clarity.

The support for the day is seen at 23800 levels, while the resistance is seen at 24300 levels. BankNifty would have the daily range of 53500-55400 levels.

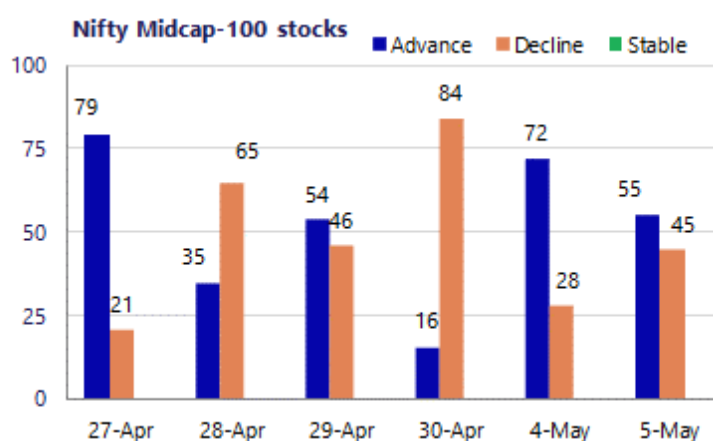
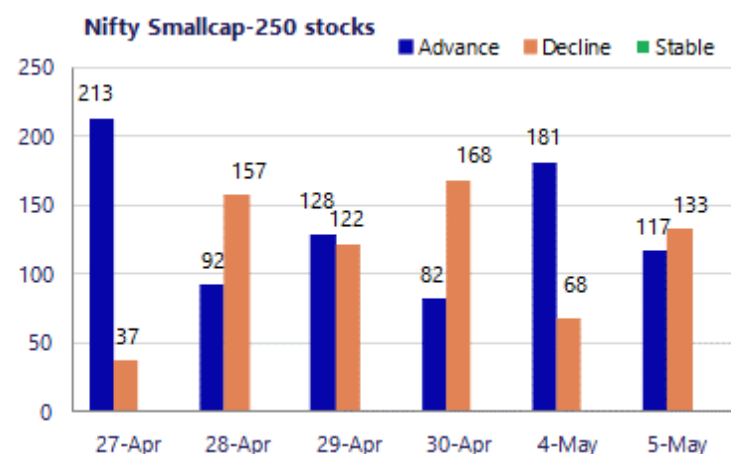


*Blue candle → Close rate > Open rate * Red candle → Close rate < Open rate

Sensex	Period	Closing	% Chng	Trend	Reversal	2 Sup	1 Sup	Pivot	1 Res	2 Res
Nifty	Daily	24032.80	-0.36%	-1	24061.40	23799	23916	23999	24116	24199
	Weekly	23997.55	0.42%	4	23066.60	23691	23844	24089	24243	24488
	Monthly	23997.55	7.46%	-4	26009.10	21175	22586	23594	25005	26013
Bank Nifty	Daily	54547.05	-0.60%	-8	55192.50	53886	54216	54552	54883	55219
	Weekly	54863.35	-2.19%	4	53420.50	54323	54593	55534	55804	56745
	Monthly	54863.35	9.13%	-2	62653.00	46590	50727	54092	58228	61593
Sensex	Daily	77017.79	-0.33%	-8	77085.95	76258	76638	76895	77274	77531
	Weekly	76913.50	0.30%	4	73991.30	75971	76442	77212	77684	78454
	Monthly	76913.50	6.90%	-4	83783.80	68121	72517	75942	80338	83763

Gainers - Losers (Nifty 500 Stocks)

Gainers				Losers			
Company Name	Last Price	% Gain	Volume	Company Name	Last Price	% Loss	Volume
AAVAS Financier	1445.8	4.65%	220906	Aarti Ind	488.00	-4.89%	5630478
AB Capital	360.85	4.34%	15420130	Aditya Birla F	63.99	-2.94%	5706075
Aadhar Housing	517.45	3.58%	823459	Ambuja Cements	433.10	-2.74%	8247414
Adani Green Ene	1,331.40	3.15%	4470580	Can Fin Homes	874.45	-2.46%	121428
Aditya Infotech	2,460.60	2.70%	225939	Authum Invest	452.95	-2.39%	211833
Amber Enterpris	8,204.00	2.46%	297811	AIA Engineering	3876.4	-2.06%	23131
ABSL AMC	1,064.60	2.39%	875295	3M India	32425	-1.98%	2636



Nifty Daily chart with RSI indicator



BankNifty Daily chart with RSI indicator

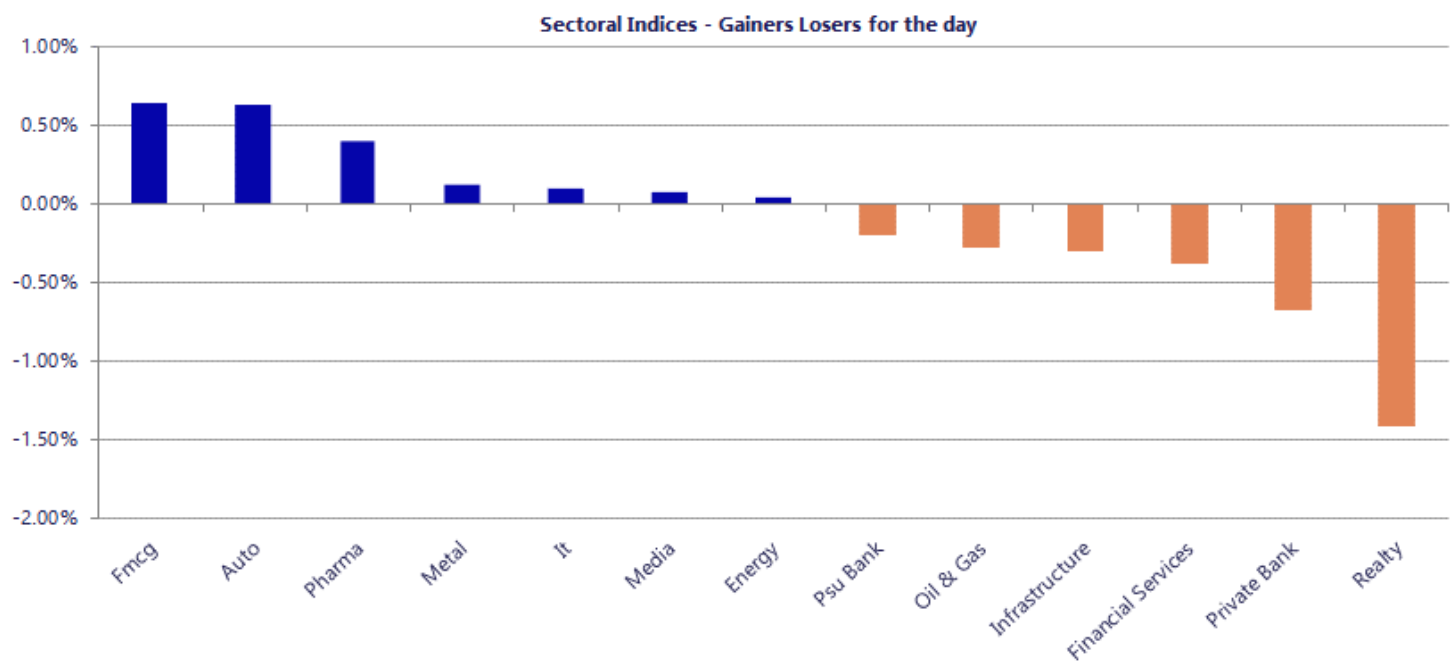


Breakouts - Cross above 200 DMA			
Company Name	LCP	Change %	200 DMA
N R Vandana Tex	59.85	10.96	53.94
Chembond Materi	178.91	8.95	164.22
Plaza Wires	49.27	8.31	45.49
Texmaco Infra	104.1	6.81	97.46
CAMS	797.4	6.78	746.79
K.P. Energy	397.95	6.50	373.65
Spandana Sphoor	265.78	6.03	250.66
Nureca	280.8	5.50	266.15
Crown Lifters	146.93	4.97	139.97
Garuda Const	196.62	4.95	187.35
Paramount Comm	43.08	3.71	41.54
Power Mech	2593.9	3.46	2507.07
IIFL Capital	326.85	3.36	316.24
TITAGARH	840.2	3.29	813.47
Srivasavi	58	2.95	56.34
Munjali Showa	134.04	2.93	130.22
Urban Enviro Wa	156.05	2.69	151.96
Indo-National	416	2.56	405.61

* Stocks crossing above its Simple Moving Average (200DMA)

Breakdown - Cross below 200 DMA			
Company Name	LCP	Change %	200 DMA
Manomay Tex Ind	164.94	-18.96	203.54
Chamunda Electr	45.4	-5.61	48.1
Vdeal System	176	-4.67	184.63
SEL Mgf Company	30.09	-3.93	31.32
Kajaria Ceramic	1062.4	-3.43	1100.11
Team India	252.15	-2.79	259.39
S A Tech Softwa	49	-2.35	50.18
Sanofi Consumer	4581.6	-1.87	4668.77
Vinyl Chemicals	249.3	-1.77	253.79
FM	18963	-1.75	19300.43
Leela Palaces	419.8	-1.55	426.4
Sammaan Capital	144.39	-1.46	146.53
Prozone Intu	50.84	-1.43	51.58
TechEra Enginee	212.7	-1.41	215.74
JagsonpalPharma	207.05	-1.34	209.87
Karma Energy	50.22	-1.26	50.86
Federal-Mogul	474.8	-1.08	479.97
Kakatiya Cement	132.37	-1.04	133.76

* Stocks crossing below its Simple Moving Average (200DMA)



Nifty 50 Stocks - Summary Details											
Symbol	LTP	Chng	% Chng	Volume (lacs)	Turnover (crs.)	52w High	Diff with 52w H	52w Low	Diff with 52w L	365 days % chng	30 days % chng
NIFTY 50	24032.80	-86.50	-0.36%	3632.11	33645	26373	8.87%	22183	8.34%	5.81%	-1.75%
ADANIENT	2462.00	-23.70	-0.95%	16.22	402	2617	5.90%	1753	40.44%	34.23%	3.27%
ADANI PORTS	1726.80	-15.80	-0.91%	43.57	756	1757	1.74%	1204	43.43%	25.35%	28.19%
APOLLOHOSP	7760.00	22.50	0.29%	2.54	197	8100	4.19%	6678	16.21%	6.05%	11.27%
ASIANPAINT	2432.50	-15.60	-0.64%	3.28	80	2986	18.53%	2115	15.01%	12.15%	-0.18%
AXISBANK	1257.80	-17.30	-1.36%	101.63	1285	1418	11.32%	1043	20.65%	5.00%	7.21%
BAJAJ-AUTO	10068.00	-64.00	-0.63%	2.33	235	10478	3.91%	7612	32.26%	14.95%	27.11%
BAJAJFINSV	1791.00	20.60	1.16%	12.70	226	2195	18.41%	1597	12.15%	9.16%	-11.61%
BAJFINANCE	959.75	9.55	1.01%	72.89	691	1103	12.95%	788	21.81%	16.07%	7.45%
BEL	436.50	2.95	0.68%	116.42	503	473	7.80%	305	43.21%	3.53%	38.44%
BHARTIARTL	1816.00	-11.10	-0.61%	114.07	2071	2175	16.49%	1747	3.96%	1.47%	-2.68%
CIPLA	1335.20	0.20	0.01%	10.51	140	1673	20.19%	1166	14.54%	11.98%	-13.46%
COALINDIA	472.85	-7.10	-1.48%	69.46	329	491	3.75%	369	28.27%	5.23%	22.63%
DRREDDY	1272.10	-15.10	-1.17%	9.86	126	1380	7.80%	1129	12.64%	4.50%	8.61%
EICHERMOT	7300.00	-29.00	-0.40%	4.82	351	8230	11.30%	5220	39.86%	9.78%	33.69%
ETERNAL	249.10	-2.80	-1.11%	284.96	708	368	32.39%	213	17.17%	7.50%	3.83%
GRASIM	2863.70	7.70	0.27%	9.47	271	2979	3.87%	2503	14.43%	11.68%	3.94%
HCLTECH	1200.30	-0.20	-0.02%	24.59	295	1780	32.57%	1184	1.38%	-14.40%	-23.48%
HDFCBANK	773.20	-6.20	-0.80%	388.85	2999	1021	24.23%	727	6.41%	2.97%	-20.16%
HDFCLIFE	595.00	6.65	1.13%	40.82	242	821	27.51%	555	7.19%	5.11%	-19.47%
HINDALCO	1057.00	14.30	1.37%	45.80	481	1080	2.13%	604	75.07%	15.36%	66.88%
HINDUNILVR	2322.60	13.30	0.58%	17.41	404	2750	15.54%	2023	14.84%	12.46%	-1.11%
ICICIBANK	1250.90	-19.90	-1.57%	244.46	3061	1500	16.61%	1188	5.33%	2.89%	-12.49%
INDIGO	4250.70	-11.70	-0.27%	12.40	525	6233	31.80%	3895	9.13%	1.36%	-23.15%
INFY	1177.60	9.20	0.79%	81.63	959	1728	31.85%	1150	2.42%	-9.47%	-21.94%
ITC	310.35	-0.75	-0.24%	267.93	835	444	30.13%	287	8.14%	5.98%	-28.97%
JIOFIN	249.00	-3.74	-1.48%	162.02	404	339	26.46%	223	11.51%	8.51%	-4.45%
JSWSTEEL	1252.00	-14.60	-1.15%	14.72	185	1307	4.19%	935	33.90%	9.70%	31.03%
KOTAKBANK	371.60	-0.05	-0.01%	190.83	711	453	18.01%	346	7.55%	3.80%	-10.88%
LT	4075.00	-25.80	-0.63%	38.49	1560	4440	8.22%	3284	24.08%	12.78%	22.37%
M&M	3220.80	114.30	3.68%	64.53	2032	3840	16.12%	2887	11.56%	6.94%	6.60%
MARUTI	13450.00	-130.00	-0.96%	4.19	564	17370	22.57%	11800	13.98%	6.48%	7.96%
MAXHEALTH	1004.00	-7.55	-0.75%	9.71	97	1314	23.61%	903	11.18%	6.29%	-11.28%
NESTLEIND	1473.00	15.90	1.09%	24.91	366	1480	0.50%	1085	35.80%	23.65%	26.54%
NTPC	399.20	-0.85	-0.21%	67.91	270	414	3.67%	316	26.51%	11.00%	14.52%
ONGC	290.10	-2.80	-0.96%	107.50	312	308	5.66%	228	26.99%	1.01%	21.28%
POWERGRID	318.50	-0.55	-0.17%	85.69	273	325	1.98%	250	27.40%	9.85%	3.34%
RELIANCE	1462.50	-0.60	-0.04%	235.42	3441	1612	9.26%	1290	13.37%	8.29%	2.18%
SBILIFE	1823.10	3.00	0.16%	10.03	183	2132	14.49%	1693	7.68%	2.77%	3.01%
SBIN	1060.00	-8.40	-0.79%	121.93	1293	1235	14.15%	756	40.30%	4.08%	34.18%
SHRIRAMFIN	965.00	4.55	0.47%	40.29	385	1108	12.91%	567	70.34%	8.23%	53.45%
SUNPHARMA	1818.00	-5.50	-0.30%	30.11	547	1851	1.79%	1548	17.44%	7.35%	-1.01%
TATA CONSUM	1151.00	-9.40	-0.81%	10.66	123	1221	5.73%	1007	14.28%	10.46%	-0.90%
TATASTEEL	211.48	-0.76	-0.36%	207.31	438	218	3.10%	138	53.25%	8.93%	48.85%
TCS	2429.80	-1.50	-0.06%	33.86	823	3631	33.07%	2346	3.56%	-0.85%	-29.66%
TECHM	1451.20	-20.40	-1.39%	7.11	104	1854	21.73%	1304	11.28%	0.67%	-2.90%
TITAN	4390.00	27.00	0.62%	8.51	372	4554	3.60%	3246	35.26%	7.15%	32.16%
TMPV	340.60	-2.45	-0.71%	60.84	208	744	54.22%	294	15.73%	12.30%	-48.51%
TRENT	4144.90	-13.60	-0.33%	4.65	191	6261	33.80%	3276	26.54%	16.74%	-22.82%
ULTRACEMCO	11939.00	181.00	1.54%	3.50	415	13110	8.93%	10325	15.63%	12.42%	2.31%
WIPRO	200.08	-0.67	-0.33%	88.76	178	273	26.74%	187	7.28%	2.65%	-17.86%

Disclaimer / Disclosures

ANALYST CERTIFICATION

I, Mrs. Vaishali Parekh B.com, Research Analyst, author and the name subscribed to this report, hereby certify that all of the views expressed in this research report accurately reflect our views about the subject issuer(s) or securities. We also certify that no part of our compensation was, is, or will be directly or indirectly related to the specific recommendation(s) or view(s) in this report.

Terms & conditions and other disclosures:

Prabhudas Lilladher Pvt. Ltd, Mumbai, India (hereinafter referred to as "PL") is engaged in the business of Stock Broking, Portfolio Manager, Depository Participant and distribution for third party financial products. PL is a subsidiary of Prabhudas Lilladher Advisory Services Pvt Ltd. which has its various subsidiaries engaged in business of commodity broking, investment banking, financial services (margin funding) and distribution of third party financial/other products, details in respect of which are available at www.plindia.com

This document has been prepared by the Research Division of PL and is meant for use by the recipient only as information and is not for circulation. This document is not to be reported or copied or made available to others without prior permission of PL. It should not be considered or taken as an offer to sell or a solicitation to buy or sell any security.

The information contained in this report has been obtained from sources that are considered to be reliable. However, PL has not independently verified the accuracy or completeness of the same. Neither PL nor any of its affiliates, its directors or its employees accepts any responsibility of whatsoever nature for the information, statements and opinion given, made available or expressed herein or for any omission therein.

Recipients of this report should be aware that past performance is not necessarily a guide to future performance and value of investments can go down as well. The suitability or otherwise of any investments will depend upon the recipient's particular circumstances and, in case of doubt, advice should be sought from an independent expert/advisor.

Either PL or its affiliates or its directors or its employees or its representatives or its clients or their relatives may have position(s), make market, act as principal or engage in transactions of securities of companies referred to in this report and they may have used the research material prior to publication.

PL may from time to time solicit or perform investment banking or other services for any company mentioned in this document.

PL is registered as Research Analyst under Securities and Exchange Board of India (Research Analysts) Regulations, 2014 PL submits that no material disciplinary action has been taken on us by any Regulatory Authority impacting Equity Research Analysis activities.

PL or its research analysts or its associates or his relatives do not have any financial interest in the subject company.

PL or its research analysts or its associates or his relatives do not have actual/beneficial ownership of one per cent or more securities of the subject company at the end of the month immediately preceding the date of publication of the research report.

PL or its research analysts or its associates or his relatives do not have any material conflict of interest at the time of publication of the research report.

PL or its associates might have received compensation from the subject company in the past twelve months.

PL or its associates might have managed or co-managed public offering of securities for the subject company in the past twelve months or mandated by the subject company for any other assignment in the past twelve months.

PL or its associates might have received any compensation for investment banking or merchant banking or brokerage services from the subject company in the past twelve months.

PL or its associates might have received any compensation for products or services other than investment banking or merchant banking or brokerage services from the subject company in the past twelve months PL or its associates might have received any compensation or other benefits from the subject company or third party in connection with the research report.

PL encourages independence in research report preparation and strives to minimize conflict in preparation of research report. PL or its analysts did not receive any compensation or other benefits from the subject Company or third party in connection with the preparation of the research report. PL or its Research Analysts do not have any material conflict of interest at the time of publication of this report.

It is confirmed that Mrs. Vaishali Parekh B.com, Research Analyst of this report has not received any compensation from the companies mentioned in the report in the preceding twelve months compensation of our Research Analysts is not based on any specific merchant banking, investment banking or brokerage service transactions.

The Research analysts for this report certifies that all of the views expressed in this report accurately reflect his or her personal views about the subject company or companies and its or their securities, and no part of his or her compensation was, is or will be, directly or indirectly related to specific recommendations or views expressed in this report.

The research analysts for this report has not served as an officer, director or employee of the subject company PL or its research analysts have not engaged in market making activity for the subject company

Our sales people, traders, and other professionals or affiliates may provide oral or written market commentary or trading strategies to our clients that reflect opinions that are contrary to the opinions expressed herein, and our proprietary trading and investing businesses may make investment decisions that are inconsistent with the recommendations expressed herein. In reviewing these materials, you should be aware that any or all of the foregoing, among other things, may give rise to real or potential conflicts of interest.

PL and its associates, their directors and employees may (a) from time to time, have a long or short position in, and buy or sell the securities of the subject company or (b) be engaged in any other transaction involving such securities and earn brokerage or other compensation or act as a market maker in the financial instruments of the subject company or act as an advisor or lender/borrower to the subject company or may have any other potential conflict of interests with respect to any recommendation and other related information and opinions.

Regd. Office: 3rd Floor, Sadhana House, 570, P. B. Marg, Behind Mahindra Tower, Worli, Mumbai - 400 018, India.