

* Sensex 77958.52 + 940.73

* Nifty 24330.95 + 298.15

* Bank Nifty 55981.05 + 1434.00

Market Preview

Nifty ends above the hurdle of 24300 zone

Nifty witnessed a strong recovery from the 24000 zone mid half to end on an optimistic note above the 24300 zone to anticipate for further rise in the coming sessions. BankNifty bounced back significantly from the 54600 level to close near the 56000 zone with active participation witnessed from the Private as well as PSU banks. The market breadth was strong with the advance decline indicating a ratio of 3:1 at close.

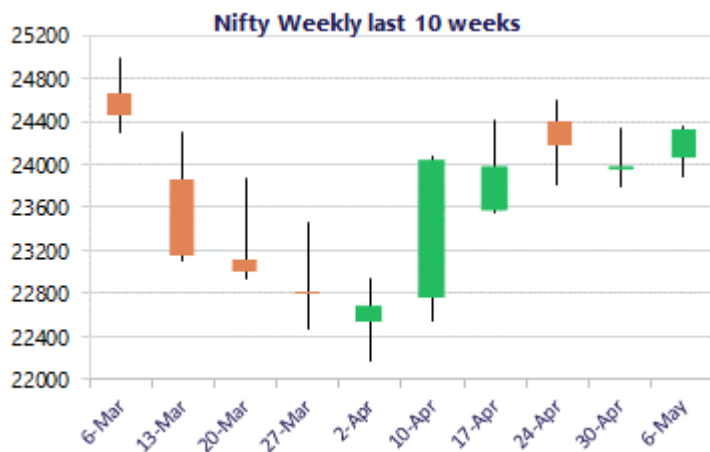
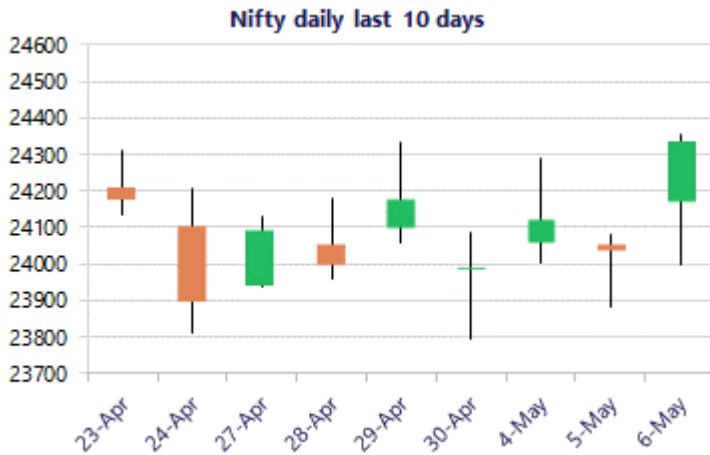
Market Forecast

Nifty daily range 24100 - 24600

Nifty amid high fluctuations witnessed a strong robust move in the second half racing from 24000 to close above the tough resistance hurdle of 24300 zone on the back of positive cues of Cease-fire from the middle east, to ease out the sentiment and anticipating for further rise in the coming sessions. The index would need to sustain above the important support zone of 23800 level as mentioned earlier, and with improved bias as of now, can expect for higher targets of 24800 and 25000 levels in the coming days.

BankNifty staged a strong recovery from the low made near 54600 zone and closed near the 56000 level with optimistic move among the banking stocks witnessed to improve the bias and sentiment significantly. As mentioned earlier, the index managed to sustain the important and crucial near-term support at 54400 level and on the upside, the 200 period MA at 57200 level would be the important hurdle which needs to be breached above decisively to establish conviction further ahead.

The support for the day is seen at 24100 levels, while the resistance is seen at 24600 levels. BankNifty would have the daily range of 55200-57200 levels.

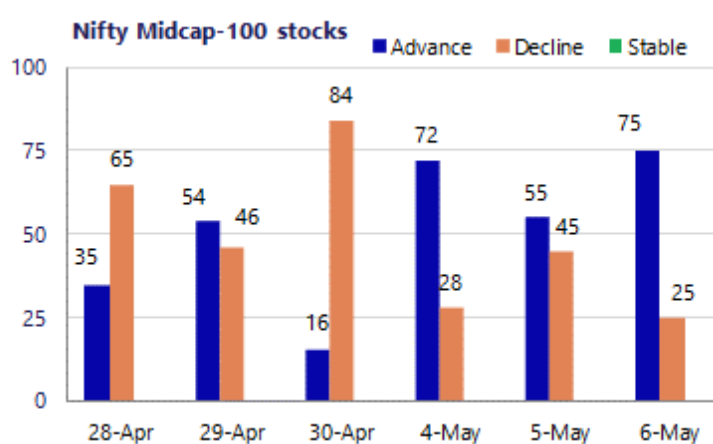
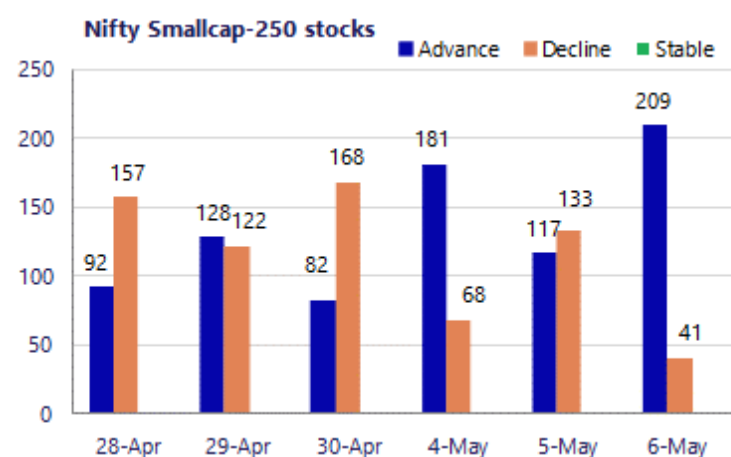


*Blue candle → Close rate > Open rate * Red candle → Close rate < Open rate

Sensex	Period	Closing	% Chng	Trend	Reversal	2 Sup	1 Sup	Pivot	1 Res	2 Res
Nifty	Daily	24330.95	1.24%	1	24140.65	23870	24100	24228	24459	24587
	Weekly	23997.55	0.42%	4	23066.60	23691	23844	24089	24243	24488
	Monthly	23997.55	7.46%	-4	26009.10	21175	22586	23594	25005	26013
Bank Nifty	Daily	55981.05	2.63%	1	55192.75	54057	55019	55549	56511	57041
	Weekly	54863.35	-2.19%	4	53420.50	54323	54593	55534	55804	56745
	Monthly	54863.35	9.13%	-2	62653.00	46590	50727	54092	58228	61593
Sensex	Daily	77958.52	1.22%	1	77292.60	76335	77147	77585	78396	78834
	Weekly	76913.50	0.30%	4	73991.30	75971	76442	77212	77684	78454
	Monthly	76913.50	6.90%	-4	83783.80	68121	72517	75942	80338	83763

Gainers - Losers (Nifty 500 Stocks)

Gainers				Losers			
Company Name	Last Price	% Gain	Volume	Company Name	Last Price	% Loss	Volume
Anant Raj	556.65	6.96%	6328532	Billionbrains G	210.82	-4.85%	35608349
Ajanta Pharma	3,096.30	6.86%	758078	Ather Energy	897.55	-4.29%	4948096
Amber Enterpris	8661.5	5.58%	613225	Aadhar Housing	500.10	-3.35%	1217726
BPCL	314.05	5.21%	16981212	Apar Ind	12,384.00	-3.20%	102066
Authum Invest	474.35	4.72%	249642	Afcons Infra	336.30	-2.80%	965747
Ashok Leyland	167.80	4.71%	22175239	ABB India	7182.5	-1.99%	282199
Aditya Birla Re	1,549.70	4.54%	480279	Aster DM Health	731.05	-1.58%	1176209



Nifty Daily chart with RSI indicator



BankNifty Daily chart with RSI indicator



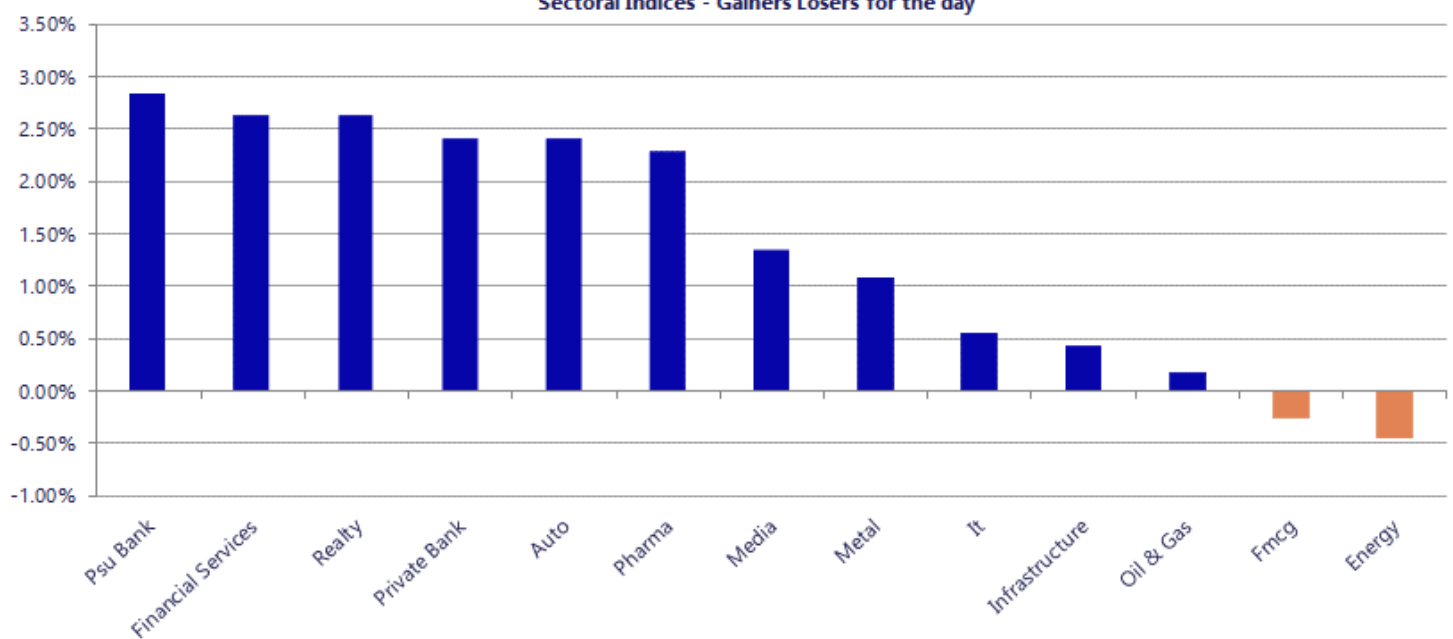
Breakouts - Cross above 200 DMA			
Company Name	LCP	Change %	200 DMA
Tunwal E-Motors	34.8	9.95	31.65
Viyash Scientif	219.65	9.34	200.88
Gandhar Oil	156.66	8.72	144.09
Delta Corp	78.92	8.47	72.76
Gloster	671.25	7.98	621.62
Xpro India	1113.8	6.34	1047.36
Raymond Realty	569.6	5.61	539.33
OnMobile Global	59.17	5.34	56.17
P E Analytics	210	4.72	200.53
Prozone Intu	54.01	4.61	51.63
FM	20173	4.46	19312.17
Jay Jalaram	145.85	4.30	139.84
PTC Industries	17221	4.25	16518.47
HVAX Technologi	843.75	4.13	810.27
Elgi Rubber	54.84	4.06	52.7
Valiant Organic	303.85	4.05	292.02
De Neers	199.5	4.05	191.74
Panacea Biotec	398.65	3.95	383.49

* Stocks crossing above its Simple Moving Average (200DMA)

Breakdown - Cross below 200 DMA			
Company Name	LCP	Change %	200 DMA
Digikore Studio	74.3	-3.82	77.25
QVC Exports	29.1	-2.15	29.74
Ganesha Ecosph	1033.9	-1.67	1051.49
Bharat Bijlee	2773.3	-1.66	2820.16
GPT Healthcare	140.79	-1.35	142.71
SRG Housing Fin	281.5	-1.24	285.04
Nexus Select	155.79	-0.85	157.12
Colgate	2157.1	-0.78	2174.06
Osel Devices	547.2	-0.77	551.45
Ramdevbaba Solv	106.2	-0.75	107
Service Care	53	-0.73	53.39
Vinyas Innovati	1139	-0.70	1147.08
Sakthi Sugars	19.43	-0.61	19.55
HOEC	153.78	-0.56	154.65
NK Industries	66.37	-0.48	66.69
Motor and Gen F	24.26	-0.33	24.34
Embassy Office	420.56	-0.22	421.47
Sun TV Network	570.75	-0.18	571.79

* Stocks crossing below its Simple Moving Average (200DMA)

Sectoral Indices - Gainers Losers for the day



Nifty 50 Stocks - Summary Details											
Symbol	LTP	Chng	% Chng	Volume (lacs)	Turnover (crs.)	52w High	Diff with 52w H	52w Low	Diff with 52w L	365 days % chng	30 days % chng
NIFTY 50	24330.95	298.15	1.24%	4291.29	38823	26373	7.74%	22183	9.69%	5.93%	-0.20%
ADANIENT	2540.50	78.50	3.19%	31.68	796	2617	2.90%	1753	44.92%	33.56%	11.16%
ADANIPTS	1742.20	17.20	1.00%	30.00	522	1762	1.15%	1204	44.71%	25.60%	31.90%
APOLLOHOSP	7755.00	-17.00	-0.22%	4.37	339	8100	4.25%	6678	16.14%	5.18%	10.64%
ASIANPAINT	2525.10	95.10	3.91%	13.96	349	2986	15.43%	2115	19.39%	15.60%	4.43%
AXISBANK	1300.60	40.90	3.25%	72.78	930	1418	8.30%	1043	24.76%	4.44%	11.99%
BAJAJ-AUTO	10390.00	344.00	3.42%	3.93	403	10478	0.84%	7612	36.50%	16.19%	30.77%
BAJAJFINSV	1836.00	41.40	2.31%	10.59	193	2195	16.36%	1597	14.97%	9.79%	-9.81%
BAJFINANCE	981.15	22.55	2.35%	77.71	758	1103	11.01%	788	24.53%	15.31%	11.53%
BEL	438.10	4.75	1.10%	97.48	427	473	7.47%	305	43.73%	2.56%	41.10%
BHARTIARTL	1833.80	27.70	1.53%	55.08	1008	2175	15.67%	1747	4.97%	2.29%	-3.53%
CIPLA	1362.90	29.20	2.19%	18.55	252	1673	18.54%	1166	16.92%	13.49%	-9.83%
COALINDIA	468.60	-4.00	-0.85%	85.95	406	491	4.61%	369	27.11%	1.97%	23.89%
DRREDDY	1308.00	36.80	2.89%	33.40	438	1380	5.20%	1129	15.81%	7.41%	12.72%
EICHERMOT	7315.00	13.50	0.18%	4.04	294	8230	11.12%	5220	40.15%	10.90%	32.64%
ETERNAL	255.90	7.43	2.99%	329.99	835	368	30.55%	213	20.37%	10.21%	10.00%
GRASIM	2902.30	30.80	1.07%	3.63	105	2979	2.57%	2503	15.98%	11.01%	6.36%
HCLTECH	1190.90	-9.30	-0.77%	35.40	423	1780	33.10%	1184	0.58%	-15.14%	-24.58%
HDFCBANK	796.00	23.70	3.07%	355.29	2790	1021	22.00%	727	9.54%	3.24%	-17.59%
HDFCLIFE	606.00	11.90	2.00%	343.38	2064	821	26.17%	555	9.17%	4.41%	-16.14%
HINDALCO	1044.00	-10.70	-1.01%	53.35	564	1080	3.33%	604	72.92%	12.57%	65.70%
HINDUNILVR	2315.80	-11.60	-0.50%	11.96	276	2750	15.79%	2023	14.50%	11.08%	-2.77%
ICICIBANK	1279.60	28.30	2.26%	229.10	2907	1500	14.69%	1188	7.75%	3.91%	-10.62%
INDIGO	4524.10	285.70	6.74%	26.58	1181	6233	27.41%	3895	16.15%	4.91%	-14.99%
INFY	1170.50	-7.60	-0.65%	98.54	1155	1728	32.26%	1150	1.80%	-10.39%	-22.56%
ITC	310.75	-0.70	-0.22%	202.86	630	444	30.04%	287	8.28%	5.39%	-28.65%
JIOFIN	252.50	4.05	1.63%	146.88	369	339	25.43%	223	13.08%	7.31%	0.52%
JSWSTEEL	1270.00	17.60	1.41%	9.88	125	1307	2.82%	935	35.83%	12.03%	31.27%
KOTAKBANK	377.15	5.80	1.56%	361.93	1348	453	16.78%	346	9.16%	4.60%	-9.08%
LT	4012.60	-41.90	-1.03%	95.40	3766	4440	9.63%	3284	22.18%	7.64%	20.35%
M&M	3297.00	86.20	2.68%	60.07	1974	3840	14.14%	2887	14.20%	9.11%	7.45%
MARUTI	13750.00	324.00	2.41%	4.35	591	17370	20.84%	11800	16.53%	8.37%	9.29%
MAXHEALTH	1018.90	18.45	1.84%	13.27	135	1314	22.48%	903	12.83%	9.37%	-11.86%
NESTLEIND	1479.90	2.10	0.14%	21.33	316	1490	0.68%	1085	36.43%	21.70%	25.60%
NTPC	394.10	-4.55	-1.14%	111.20	441	414	4.90%	316	24.89%	7.65%	15.30%
ONGC	280.90	-9.05	-3.12%	228.49	648	308	8.65%	228	22.96%	-0.34%	18.52%
POWERGRID	314.80	-4.65	-1.46%	48.83	155	325	3.12%	250	25.92%	6.66%	2.34%
RELIANCE	1438.70	-24.90	-1.70%	142.18	2054	1612	10.74%	1290	11.53%	10.27%	1.25%
SBILIFE	1868.90	47.70	2.62%	12.37	229	2132	12.34%	1693	10.38%	1.75%	8.28%
SBIN	1099.00	39.10	3.69%	143.81	1551	1235	10.99%	756	45.47%	6.41%	41.97%
SHRIRAMFIN	1007.00	42.60	4.42%	58.59	581	1108	9.12%	567	77.76%	8.51%	61.52%
SUNPHARMA	1850.00	29.20	1.60%	32.47	599	1858	0.42%	1548	19.51%	9.17%	1.70%
TATACONSUM	1149.50	-4.00	-0.35%	15.67	180	1221	5.85%	1007	14.13%	8.94%	-0.50%
TATASTEEL	215.23	3.91	1.85%	240.75	516	218	1.38%	138	55.96%	9.76%	49.01%
TCS	2435.00	7.70	0.32%	31.48	766	3631	32.93%	2346	3.78%	-1.57%	-29.62%
TECHM	1467.00	14.80	1.02%	8.78	129	1854	20.87%	1304	12.49%	1.21%	-1.95%
TITAN	4357.60	-16.00	-0.37%	14.60	633	4554	4.31%	3246	34.27%	2.63%	32.08%
TMPV	358.25	18.10	5.32%	110.35	388	744	51.85%	294	21.73%	16.54%	-44.73%
TRENT	4300.00	164.60	3.98%	13.84	591	6261	31.32%	3276	31.28%	12.17%	-17.69%
ULTRACEMCO	12100.00	137.00	1.15%	3.55	427	13110	7.70%	10325	17.19%	10.45%	3.48%
WIPRO	199.25	-0.53	-0.27%	131.61	262	273	27.04%	187	6.84%	0.99%	-17.39%

Disclaimer / Disclosures

ANALYST CERTIFICATION

I, Mrs. Vaishali Parekh B.com, Research Analyst, author and the name subscribed to this report, hereby certify that all of the views expressed in this research report accurately reflect our views about the subject issuer(s) or securities. We also certify that no part of our compensation was, is, or will be directly or indirectly related to the specific recommendation(s) or view(s) in this report.

Terms & conditions and other disclosures:

Prabhudas Lilladher Pvt. Ltd, Mumbai, India (hereinafter referred to as "PL") is engaged in the business of Stock Broking, Portfolio Manager, Depository Participant and distribution for third party financial products. PL is a subsidiary of Prabhudas Lilladher Advisory Services Pvt Ltd. which has its various subsidiaries engaged in business of commodity broking, investment banking, financial services (margin funding) and distribution of third party financial/other products, details in respect of which are available at www.plindia.com

This document has been prepared by the Research Division of PL and is meant for use by the recipient only as information and is not for circulation. This document is not to be reported or copied or made available to others without prior permission of PL. It should not be considered or taken as an offer to sell or a solicitation to buy or sell any security.

The information contained in this report has been obtained from sources that are considered to be reliable. However, PL has not independently verified the accuracy or completeness of the same. Neither PL nor any of its affiliates, its directors or its employees accepts any responsibility of whatsoever nature for the information, statements and opinion given, made available or expressed herein or for any omission therein.

Recipients of this report should be aware that past performance is not necessarily a guide to future performance and value of investments can go down as well. The suitability or otherwise of any investments will depend upon the recipient's particular circumstances and, in case of doubt, advice should be sought from an independent expert/advisor.

Either PL or its affiliates or its directors or its employees or its representatives or its clients or their relatives may have position(s), make market, act as principal or engage in transactions of securities of companies referred to in this report and they may have used the research material prior to publication.

PL may from time to time solicit or perform investment banking or other services for any company mentioned in this document.

PL is registered as Research Analyst under Securities and Exchange Board of India (Research Analysts) Regulations, 2014 PL submits that no material disciplinary action has been taken on us by any Regulatory Authority impacting Equity Research Analysis activities.

PL or its research analysts or its associates or his relatives do not have any financial interest in the subject company.

PL or its research analysts or its associates or his relatives do not have actual/beneficial ownership of one per cent or more securities of the subject company at the end of the month immediately preceding the date of publication of the research report.

PL or its research analysts or its associates or his relatives do not have any material conflict of interest at the time of publication of the research report.

PL or its associates might have received compensation from the subject company in the past twelve months.

PL or its associates might have managed or co-managed public offering of securities for the subject company in the past twelve months or mandated by the subject company for any other assignment in the past twelve months.

PL or its associates might have received any compensation for investment banking or merchant banking or brokerage services from the subject company in the past twelve months.

PL or its associates might have received any compensation for products or services other than investment banking or merchant banking or brokerage services from the subject company in the past twelve months PL or its associates might have received any compensation or other benefits from the subject company or third party in connection with the research report.

PL encourages independence in research report preparation and strives to minimize conflict in preparation of research report. PL or its analysts did not receive any compensation or other benefits from the subject Company or third party in connection with the preparation of the research report. PL or its Research Analysts do not have any material conflict of interest at the time of publication of this report.

It is confirmed that Mrs. Vaishali Parekh B.com, Research Analyst of this report has not received any compensation from the companies mentioned in the report in the preceding twelve months compensation of our Research Analysts is not based on any specific merchant banking, investment banking or brokerage service transactions.

The Research analysts for this report certifies that all of the views expressed in this report accurately reflect his or her personal views about the subject company or companies and its or their securities, and no part of his or her compensation was, is or will be, directly or indirectly related to specific recommendations or views expressed in this report.

The research analysts for this report has not served as an officer, director or employee of the subject company PL or its research analysts have not engaged in market making activity for the subject company

Our sales people, traders, and other professionals or affiliates may provide oral or written market commentary or trading strategies to our clients that reflect opinions that are contrary to the opinions expressed herein, and our proprietary trading and investing businesses may make investment decisions that are inconsistent with the recommendations expressed herein. In reviewing these materials, you should be aware that any or all of the foregoing, among other things, may give rise to real or potential conflicts of interest.

PL and its associates, their directors and employees may (a) from time to time, have a long or short position in, and buy or sell the securities of the subject company or (b) be engaged in any other transaction involving such securities and earn brokerage or other compensation or act as a market maker in the financial instruments of the subject company or act as an advisor or lender/borrower to the subject company or may have any other potential conflict of interests with respect to any recommendation and other related information and opinions.

Regd. Office: 3rd Floor, Sadhana House, 570, P. B. Marg, Behind Mahindra Tower, Worli, Mumbai - 400 018, India.