

\* Sensex 77844.52 - 114.00

\* Nifty 24326.65 - 04.30

\* Bank Nifty 56047.40 + 66.35

## Market Preview

### Nifty consolidates near 24350 zone

Nifty remained flat for most part of the session with a rangebound movement near the 24350 zone whereas the broader markets actively participated with buying interest visible. BankNifty remained lull throughout the session with a narrow movement and ended on a flat note near the 56000 zone. The market breadth was positive with the advance decline indicating a ratio of 2:1 at close.

## Market Forecast

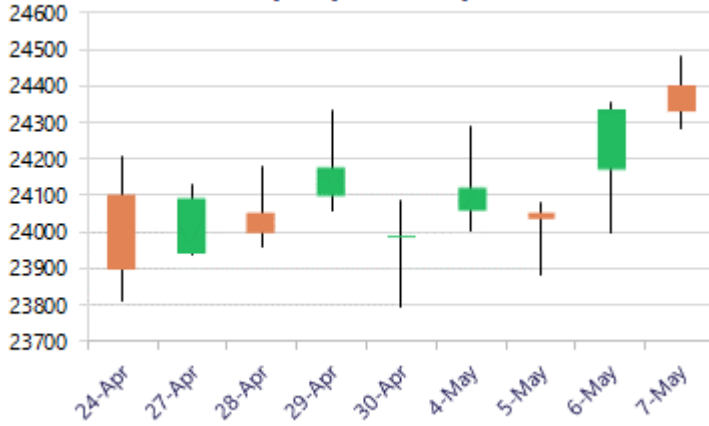
### Nifty daily range 24100 - 24600

Nifty witnessed consolidation near the 24300 zone with a narrow rangebound session closing on a flat note with bias and sentiment maintained positive with a slightly cautious approach. As mentioned earlier, the index would need to sustain above the near-term support of 24000 level while the important support zone is positioned near the 23800 level which needs to be sustained as of now. On the upside, a breach above 24600 level shall trigger for next higher targets of 24800 and 25000 levels in the coming days.

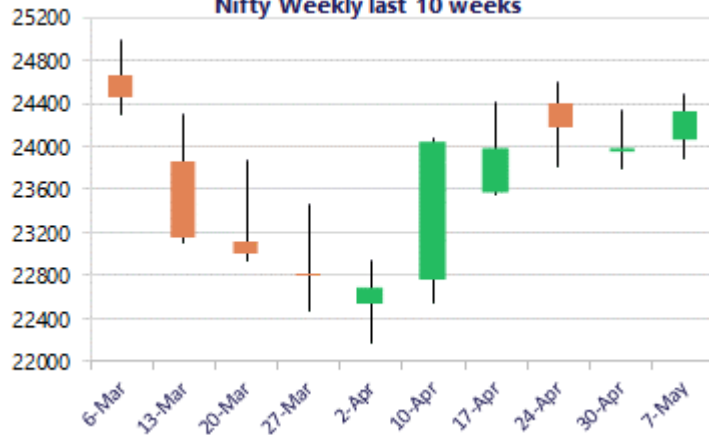
BankNifty ended on a flat note near the important 50EMA zone at 56000 level with a rangebound movement witnessed during the session maintaining the bias and sentiment intact. As mentioned earlier, the index would have the important near-term support at 54400 level while the major and crucial support is positioned near the 53500 level which needs to be sustained. On the upside, as mentioned, the 200 period MA at 57200 level would be the important hurdle which needs to be breached above decisively to establish conviction further ahead.

The support for the day is seen at 24100 levels, while the resistance is seen at 24600 levels. BankNifty would have the daily range of 55200-57200 levels.

Nifty daily last 10 days



Nifty Weekly last 10 weeks

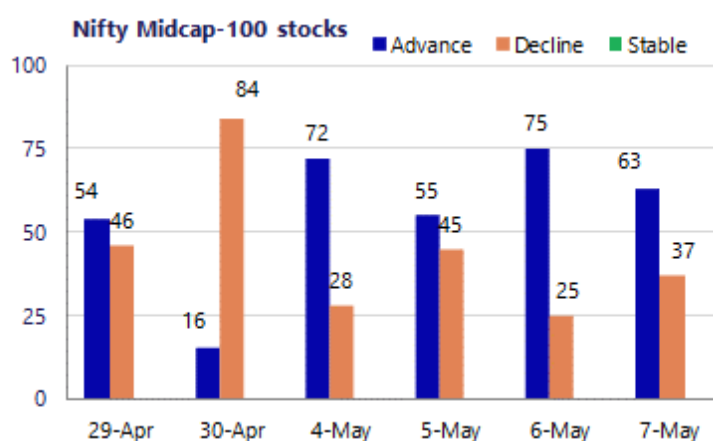
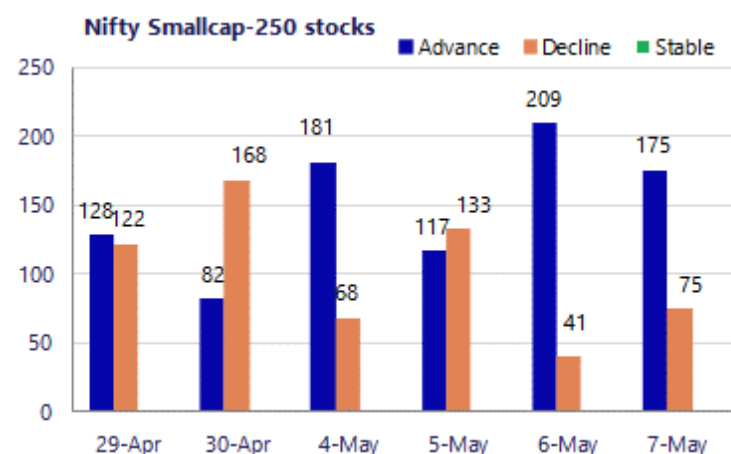


\*Blue candle → Close rate > Open rate \* Red candle → Close rate < Open rate

Sensex	Period	Closing	% Chng	Trend	Reversal	2 Sup	1 Sup	Pivot	1 Res	2 Res
Nifty	Daily	24326.65	-0.02%	2	24179.95	24166	24246	24364	24445	24562
	Weekly	23997.55	0.42%	4	23066.60	23691	23844	24089	24243	24488
	Monthly	23997.55	7.46%	-4	26009.10	21175	22586	23594	25005	26013
Bank Nifty	Daily	56047.40	0.12%	2	55249.90	55504	55776	56055	56327	56606
	Weekly	54863.35	-2.19%	4	53420.50	54323	54593	55534	55804	56745
	Monthly	54863.35	9.13%	-2	62653.00	46590	50727	54092	58228	61593
Sensex	Daily	77844.52	-0.15%	2	77405.15	77309	77577	77981	78248	78652
	Weekly	76913.50	0.30%	4	73991.30	75971	76442	77212	77684	78454
	Monthly	76913.50	6.90%	-4	83783.80	68121	72517	75942	80338	83763

**Gainers - Losers ( Nifty 500 Stocks )**

Gainers				Losers			
Company Name	Last Price	% Gain	Volume	Company Name	Last Price	% Loss	Volume
ABLBL	118.55	10.18%	21224959	Blue Star	1,748.60	-3.21%	1769359
Aegis Vopak	216.12	7.49%	6084475	Birlasoft	362.2	-2.77%	2260773
BEML	2000.2	5.39%	1080318	Aarti Ind	488.15	-1.95%	1279085
Allied Blenders	572.00	4.99%	319150	Adani Energy	1,387.10	-1.44%	2818025
Bharat Dynamics	1,466.90	4.67%	2660380	Bank of India	140.37	-1.38%	10809176
AFFLE 3I	1,484.00	3.47%	679484	Billionbrains G	208.03	-1.32%	34940809
Apar Ind	12,800.00	3.36%	151692	AAVAS Financier	1419.6	-1.10%	57149



### Nifty Daily chart with RSI indicator



### BankNifty Daily chart with RSI indicator

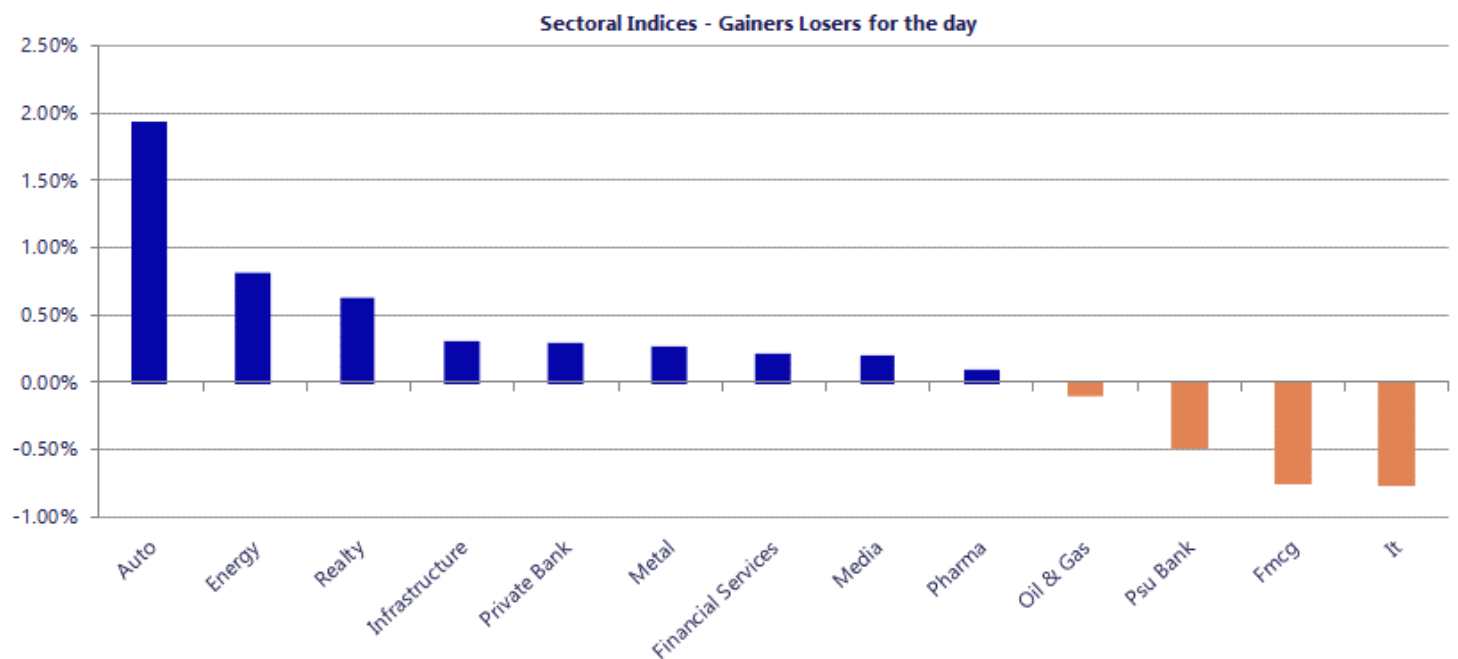


Breakouts - Cross above 200 DMA			
Company Name	LCP	Change %	200 DMA
Godrej Ind	1226.85	17.10	1047.73
SCI Land and As	52.04	9.70	47.44
Tejas Networks	532.2	8.86	488.87
Global Pet	137	8.76	125.97
HOEC	164.65	6.51	154.58
DCX Systems	221.9	5.57	210.19
Kalpataru	372.55	4.96	354.94
Vishwas Agri	56.3	4.90	53.67
TVS Supply	122.16	4.37	117.05
BLAL	208	3.90	200.19
K2 Infragen	62.7	3.84	60.38
Sree Rayalaseem	550	3.77	530.03
Rossell India	58	3.55	56.01
Suryalakshmi Co	62.6	3.44	60.52
Piramal Pharma	183.6	3.43	177.51
Bansal Wire Ind	326.8	3.42	315.98
DIC India	554	3.34	536.1
Kalyani Invest	5060	3.12	4907.11

Breakdown - Cross below 200 DMA			
Company Name	LCP	Change %	200 DMA
Regency Ceramic	44.74	-2.12	45.71
Century Enka	449	-2.05	458.39
KCP	179.5	-1.88	182.93
Tata Chemicals	802.55	-1.44	814.27
Rockingdeals	199	-1.35	201.72
GSM Foils	207	-1.18	209.48
Gokul Refoils	39.55	-1.13	40
Shiva Mills Lim	62.64	-0.65	63.05
Dynamic Service	125	-0.41	125.51
Sandesh	1093.5	-0.39	1097.76
The Western Ind	156	-0.34	156.53
IRB InvIT	61.69	-0.11	61.76
Kajaria Ceramic	1099	-0.01	1099.1

\* Stocks crossing above its Simple Moving Average (200DMA)

\* Stocks crossing below its Simple Moving Average (200DMA)



Nifty 50 Stocks - Summary Details											
Symbol	LTP	Chng	% Chng	Volume (lacs)	Turnover (crs.)	52w High	Diff with 52w H	52w Low	Diff with 52w L	365 days % chng	30 days % chng
NIFTY 50	24326.65	-4.30	-0.02%	4405.67	39526	26373	7.76%	22183	9.67%	5.20%	-0.36%
ADANIENT	2520.00	-20.30	-0.80%	10.98	277	2617	3.69%	1753	43.75%	33.89%	10.31%
ADANI PORTS	1735.00	-13.30	-0.76%	32.80	567	1762	1.55%	1291	34.44%	25.63%	29.65%
APOLLOHOSP	7845.00	84.50	1.09%	4.06	317	8100	3.14%	6678	17.48%	7.08%	12.34%
ASIANPAINT	2536.00	17.00	0.67%	10.53	267	2986	15.06%	2115	19.91%	16.00%	8.65%
AXISBANK	1296.00	1.80	0.14%	67.85	878	1418	8.62%	1043	24.32%	3.67%	11.60%
BAJAJ-AUTO	10590.00	271.00	2.63%	14.98	1586	10740	1.40%	7612	39.12%	17.02%	34.92%
BAJAJFINSV	1829.00	-7.10	-0.39%	9.46	173	2195	16.67%	1597	14.53%	8.58%	-9.91%
BAJFINANCE	973.60	-7.15	-0.73%	78.73	769	1103	11.69%	788	23.57%	13.86%	8.34%
BEL	440.90	2.70	0.62%	156.95	688	473	6.88%	305	44.65%	3.06%	42.25%
BHARTIARTL	1829.60	-4.10	-0.22%	79.14	1448	2175	15.86%	1747	4.73%	-0.04%	-3.54%
CIPLA	1361.00	-3.40	-0.25%	12.48	171	1673	18.65%	1166	16.75%	13.19%	-9.80%
COALINDIA	465.95	-4.25	-0.90%	242.64	1128	491	5.15%	369	26.39%	0.64%	21.56%
DRREDDY	1306.50	-4.50	-0.34%	25.30	331	1380	5.31%	1129	15.68%	9.23%	12.56%
EICHERMOT	7342.00	31.50	0.43%	6.06	449	8230	10.79%	5220	40.66%	11.15%	33.76%
ETERNAL	257.60	1.55	0.61%	258.27	666	368	30.09%	213	21.17%	11.05%	8.74%
GRASIM	2955.20	40.40	1.39%	6.03	178	2979	0.80%	2503	18.09%	12.75%	9.46%
HCLTECH	1182.40	-6.70	-0.56%	37.24	442	1780	33.58%	1181	0.11%	-17.98%	-24.37%
HDFCBANK	795.55	-1.00	-0.13%	461.36	3669	1021	22.04%	727	9.48%	3.05%	-18.22%
HDFCLIFE	628.00	21.65	3.57%	224.16	1385	821	23.48%	555	13.13%	7.96%	-13.25%
HINDALCO	1057.00	11.20	1.07%	42.91	452	1080	2.13%	604	75.07%	10.74%	66.12%
HINDUNILVR	2273.00	-44.10	-1.90%	18.59	424	2750	17.35%	2023	12.39%	7.69%	-4.13%
ICICIBANK	1279.00	-0.50	-0.04%	250.28	3210	1500	14.73%	1188	7.70%	2.69%	-10.90%
INDIGO	4520.00	-0.20	#VALUE!	17.24	777	6233	27.48%	3895	16.04%	5.88%	-14.66%
INFY	1165.90	-1.30	-0.11%	120.13	1401	1728	32.53%	1150	1.40%	-12.95%	-22.70%
ITC	307.55	-3.15	-1.01%	257.15	793	444	30.76%	287	7.16%	3.05%	-28.67%
JIOFIN	251.00	-1.44	-0.57%	169.40	426	339	25.87%	223	12.40%	6.66%	-1.99%
JSWSTEEL	1280.40	7.10	0.56%	17.73	227	1307	2.02%	935	36.94%	11.16%	32.53%
KOTAKBANK	380.45	3.85	1.02%	272.84	1033	453	16.05%	346	10.12%	4.82%	-9.20%
LT	4023.00	14.50	0.36%	34.76	1397	4440	9.39%	3284	22.50%	8.05%	21.12%
M&M	3366.00	65.20	1.98%	49.16	1657	3840	12.34%	2896	16.23%	11.95%	7.89%
MARUTI	13770.00	48.00	0.35%	7.26	1001	17370	20.73%	12016	14.60%	7.59%	9.00%
MAXHEALTH	1013.60	-2.30	-0.23%	18.87	192	1314	22.88%	903	12.25%	8.71%	-12.01%
NESTLEIND	1475.50	-10.60	-0.71%	22.47	332	1493	1.17%	1085	36.03%	20.67%	26.20%
NTPC	399.90	5.05	1.28%	97.00	387	414	3.50%	316	26.73%	8.42%	16.91%
ONGC	283.60	2.80	1.00%	156.07	442	308	7.77%	228	24.14%	-1.06%	18.83%
POWERGRID	314.00	-1.95	-0.62%	91.26	287	325	3.37%	250	25.60%	6.30%	0.93%
RELIANCE	1435.50	-2.40	-0.17%	198.15	2851	1612	10.94%	1290	11.28%	10.03%	2.10%
SBILIFE	1875.00	16.00	0.86%	12.33	231	2132	12.05%	1693	10.74%	1.82%	7.48%
SBIN	1092.90	-3.10	-0.28%	161.05	1762	1235	11.48%	756	44.66%	6.07%	40.82%
SHRIRAMFIN	1013.00	8.90	0.89%	48.48	491	1108	8.57%	567	78.82%	8.85%	59.11%
SUNPHARMA	1833.00	-17.20	-0.93%	22.01	404	1858	1.33%	1548	18.41%	6.69%	2.90%
TATA CONSUM	1156.40	4.20	0.36%	14.65	168	1221	5.28%	1007	14.81%	8.89%	0.91%
TATASTEEL	217.10	1.63	0.76%	212.41	462	219	0.96%	141	54.51%	9.57%	48.70%
TCS	2403.00	-32.40	-1.33%	58.29	1404	3631	33.81%	2346	2.42%	-5.39%	-30.25%
TECHM	1450.00	-16.70	-1.14%	11.47	167	1854	21.79%	1304	11.19%	-1.59%	-3.02%
TITAN	4309.00	-50.60	-1.16%	13.78	592	4554	5.38%	3246	32.77%	1.85%	29.05%
TMPV	358.60	0.45	0.13%	69.74	251	744	51.80%	294	21.85%	16.16%	-47.29%
TRENT	4296.00	6.20	0.14%	5.99	259	6261	31.38%	3276	31.16%	12.37%	-17.91%
ULTRACEMCO	12121.00	28.00	0.23%	2.28	277	13110	7.54%	10325	17.39%	10.84%	3.97%
WIPRO	197.39	-1.73	-0.87%	192.91	382	273	27.72%	187	5.84%	-3.58%	-19.12%

## Disclaimer / Disclosures

### ANALYST CERTIFICATION

I, Mrs. Vaishali Parekh B.com, Research Analyst, author and the name subscribed to this report, hereby certify that all of the views expressed in this research report accurately reflect our views about the subject issuer(s) or securities. We also certify that no part of our compensation was, is, or will be directly or indirectly related to the specific recommendation(s) or view(s) in this report.

Terms & conditions and other disclosures:

Prabhudas Lilladher Pvt. Ltd, Mumbai, India (hereinafter referred to as "PL") is engaged in the business of Stock Broking, Portfolio Manager, Depository Participant and distribution for third party financial products. PL is a subsidiary of Prabhudas Lilladher Advisory Services Pvt Ltd. which has its various subsidiaries engaged in business of commodity broking, investment banking, financial services (margin funding) and distribution of third party financial/other products, details in respect of which are available at [www.plindia.com](http://www.plindia.com)

This document has been prepared by the Research Division of PL and is meant for use by the recipient only as information and is not for circulation. This document is not to be reported or copied or made available to others without prior permission of PL. It should not be considered or taken as an offer to sell or a solicitation to buy or sell any security.

The information contained in this report has been obtained from sources that are considered to be reliable. However, PL has not independently verified the accuracy or completeness of the same. Neither PL nor any of its affiliates, its directors or its employees accepts any responsibility of whatsoever nature for the information, statements and opinion given, made available or expressed herein or for any omission therein.

Recipients of this report should be aware that past performance is not necessarily a guide to future performance and value of investments can go down as well. The suitability or otherwise of any investments will depend upon the recipient's particular circumstances and, in case of doubt, advice should be sought from an independent expert/advisor.

Either PL or its affiliates or its directors or its employees or its representatives or its clients or their relatives may have position(s), make market, act as principal or engage in transactions of securities of companies referred to in this report and they may have used the research material prior to publication.

PL may from time to time solicit or perform investment banking or other services for any company mentioned in this document.

PL is registered as Research Analyst under Securities and Exchange Board of India (Research Analysts) Regulations, 2014 PL submits that no material disciplinary action has been taken on us by any Regulatory Authority impacting Equity Research Analysis activities.

PL or its research analysts or its associates or his relatives do not have any financial interest in the subject company.

PL or its research analysts or its associates or his relatives do not have actual/beneficial ownership of one per cent or more securities of the subject company at the end of the month immediately preceding the date of publication of the research report.

PL or its research analysts or its associates or his relatives do not have any material conflict of interest at the time of publication of the research report.

PL or its associates might have received compensation from the subject company in the past twelve months.

PL or its associates might have managed or co-managed public offering of securities for the subject company in the past twelve months or mandated by the subject company for any other assignment in the past twelve months.

PL or its associates might have received any compensation for investment banking or merchant banking or brokerage services from the subject company in the past twelve months.

PL or its associates might have received any compensation for products or services other than investment banking or merchant banking or brokerage services from the subject company in the past twelve months PL or its associates might have received any compensation or other benefits from the subject company or third party in connection with the research report.

PL encourages independence in research report preparation and strives to minimize conflict in preparation of research report. PL or its analysts did not receive any compensation or other benefits from the subject Company or third party in connection with the preparation of the research report. PL or its Research Analysts do not have any material conflict of interest at the time of publication of this report.

It is confirmed that Mrs. Vaishali Parekh B.com, Research Analyst of this report has not received any compensation from the companies mentioned in the report in the preceding twelve months compensation of our Research Analysts is not based on any specific merchant banking, investment banking or brokerage service transactions.

The Research analysts for this report certifies that all of the views expressed in this report accurately reflect his or her personal views about the subject company or companies and its or their securities, and no part of his or her compensation was, is or will be, directly or indirectly related to specific recommendations or views expressed in this report.

The research analysts for this report has not served as an officer, director or employee of the subject company PL or its research analysts have not engaged in market making activity for the subject company

Our sales people, traders, and other professionals or affiliates may provide oral or written market commentary or trading strategies to our clients that reflect opinions that are contrary to the opinions expressed herein, and our proprietary trading and investing businesses may make investment decisions that are inconsistent with the recommendations expressed herein. In reviewing these materials, you should be aware that any or all of the foregoing, among other things, may give rise to real or potential conflicts of interest.

PL and its associates, their directors and employees may (a) from time to time, have a long or short position in, and buy or sell the securities of the subject company or (b) be engaged in any other transaction involving such securities and earn brokerage or other compensation or act as a market maker in the financial instruments of the subject company or act as an advisor or lender/borrower to the subject company or may have any other potential conflict of interests with respect to any recommendation and other related information and opinions.

**Regd. Office:** 3<sup>rd</sup> Floor, Sadhana House, 570, P. B. Marg, Behind Mahindra Tower, Worli, Mumbai - 400 018, India.