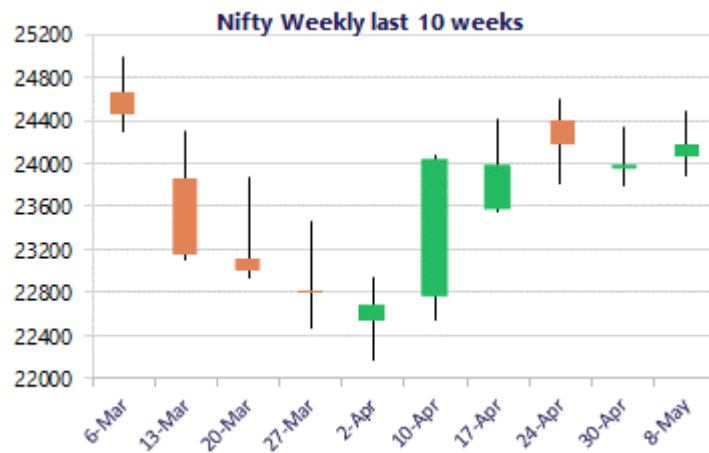
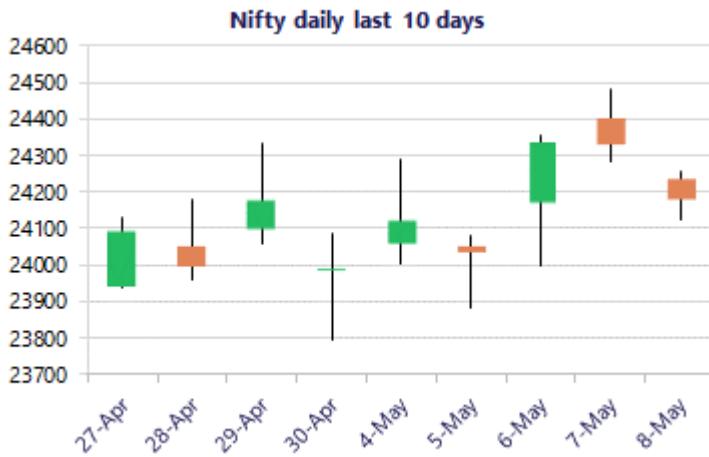


\* Sensex 77328.19 - 516.33

\* Nifty 24176.15 - 150.50

\* Bank Nifty 55310.55 - 736.85



## Market Preview

### Nifty ends near 50EMA level

Nifty once again after resisting near the 24300 zone witnessed profit booking and closed near the 50EMA zone at 24170 level with bias and sentiment once again maintained with a cautious approach. BankNifty turned weak closing near the 55300 zone with SBI Bank failing to produce a decent result outcome. The market breadth ended on a weaker note with the advance decline indicating a ratio of 3:4 at close.

## Market Forecast

### Nifty daily range 24000 - 24300

Nifty once again was subjected to the tough hurdle at 24300 - 24350 zone and witnessed profit booking to slip down to end near the 24170 zone with the bias still maintained with a cautiously positive approach. The index hovering near the 50EMA level at 24200 zone would need to sustain above the near-term support of 24000 level as mentioned earlier, while the important support zone is positioned near the 23800 level which needs to be sustained as of now to maintain the overall bias intact.

BankNifty witnessed a weak session sliding down on the back of poor SBI results which dragged the index to close near the 55300 level with bias currently maintained with a cautious approach having the important near-term support at 54400 level as mentioned earlier. The index would have the major and crucial support positioned near the 53500 level which needs to be sustained to maintain the overall trend intact whereas, on the upside, as mentioned, the 200 period MA at 57200 level would be the important hurdle which needs to be breached above decisively to establish conviction further ahead.

The support for the day is seen at 24000 levels, while the resistance is seen at 24300 levels. BankNifty would have the daily range of 54400-56000 levels.

\*Blue candle → Close rate > Open rate \* Red candle → Close rate < Open rate

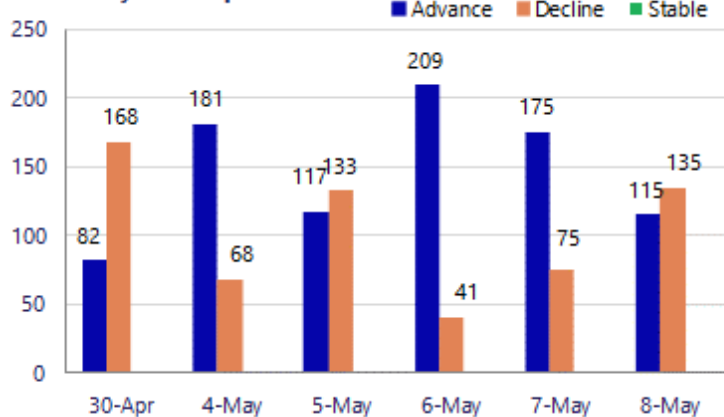
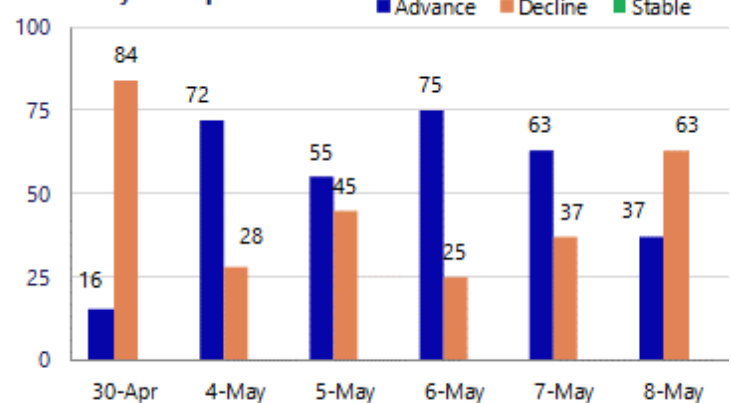
Sensex	Period	Closing	% Chng	Trend	Reversal	2 Sup	1 Sup	Pivot	1 Res	2 Res
Nifty	Daily	24176.15	-0.62%	-1	24200.10	24058	24117	24186	24244	24313
	Weekly	24176.15	0.74%	5	23398.25	23664	23920	24138	24394	24613
	Monthly	23997.55	7.46%	-4	26009.10	21175	22586	23594	25005	26013
Bank Nifty	Daily	55310.55	-1.31%	3	55256.90	54655	54983	55390	55718	56125
	Weekly	55310.55	0.82%	5	54024.35	53347	54329	55204	56186	57061
	Monthly	54863.35	9.13%	-2	62653.00	46590	50727	54092	58228	61593
Sensex	Daily	77328.19	-0.66%	-1	77460.60	76873	77101	77374	77602	77875
	Weekly	77328.19	0.54%	5	75063.20	75781	76555	77289	78062	78796
	Monthly	76913.50	6.90%	-4	83783.80	68121	72517	75942	80338	83763

**Gainers - Losers ( Nifty 500 Stocks )**
**Gainers**

Company Name	Last Price	% Gain	Volume
COFORGE	1368.1	6.44%	9374718
Berger Paints	515.75	5.63%	2002771
Action Const	947.25	4.60%	4412170
Allied Blenders	591.30	3.37%	900049
Apollo Hospital	8,097.00	3.32%	922704
APTUS VALUE	282.80	2.82%	2346143
Asian Paints	2,599.90	2.74%	2327756

**Losers**

Company Name	Last Price	% Loss	Volume
Aditya Birla Re	1,485.80	-6.62%	553545
ACME Solar	282.8	-5.28%	5354982
ABLBL	114.06	-3.51%	7629482
Aegis Logistics	720.90	-2.53%	575173
ABB India	7,012.50	-2.44%	443495
Adani Energy	1353.6	-2.42%	3113145
Aegis Vopak	211.24	-2.26%	1180708

**Nifty Smallcap-250 stocks**

**Nifty Midcap-100 stocks**


### Nifty Daily chart with RSI indicator



### BankNifty Daily chart with RSI indicator

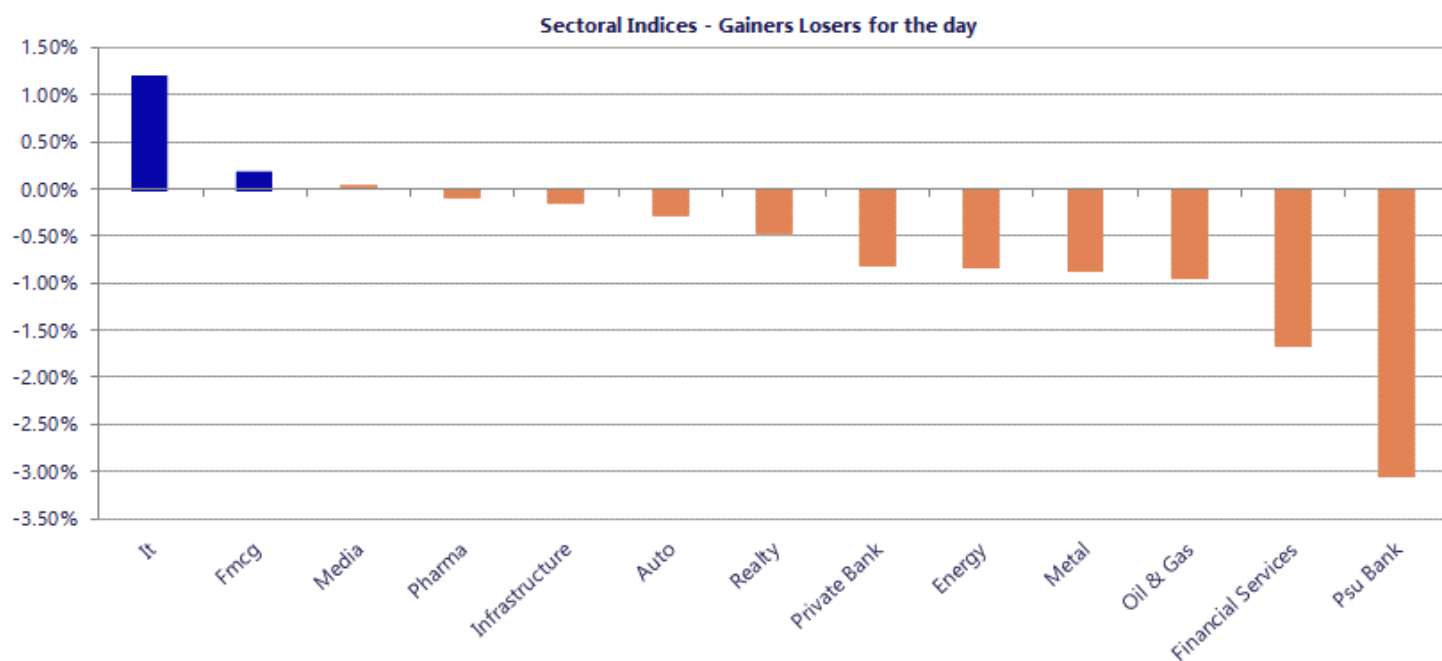


Breakouts - Cross above 200 DMA			
Company Name	LCP	Change %	200 DMA
Maral Overseas	57.46	18.79	48.37
Paramount Dye	60.45	12.63	53.67
Shiva Mills Lim	68	7.97	62.98
MRPL	167.94	6.60	157.54
Olectra Greente	1340.7	4.68	1280.8
PPAP Automotive	232.25	4.60	222.04
Goa Carbon	424.85	4.26	407.5
Vinyl Chemicals	262.1	3.72	252.7
Cosmo First	815.45	3.03	791.44
Cera Sanitary	5782	2.93	5617.33
Salzer Electro	734.4	2.72	714.94
Frog Innovation	189.7	2.71	184.7
Bigbloc Constru	58.13	2.69	56.61
HP Adhesives	43.8	2.53	42.72
Rockingdeals	206.55	2.36	201.79
Osel Devices	566.5	2.35	553.5
Health X Plat	300.55	2.32	293.74
Visaka Ind	73.75	2.16	72.19

\* Stocks crossing above its Simple Moving Average (200DMA)

Breakdown - Cross below 200 DMA			
Company Name	LCP	Change %	200 DMA
Indoco Remedies	227.91	-8.34	248.65
Paragon Fine &	45.5	-6.86	48.85
Globus Spirits	997.1	-4.22	1041.02
Dynamic Service	120.2	-4.13	125.38
S A Tech Softwa	48.25	-3.67	50.09
Pentagon Rubber	65	-3.46	67.33
Solex Energy	1281	-3.07	1321.61
Gujarat Gas	396.45	-2.73	407.59
Urban Enviro Wa	148.7	-2.18	152.02
SEL Mgf Company	30.58	-2.18	31.26
Dharmaj Crop	269.5	-2.15	275.42
Nazara	268.6	-1.92	273.87
Indbank Merchan	34.58	-1.57	35.13
Ircon Internati	158.34	-1.56	160.85
Central Bank	36.51	-1.24	36.97
Kirloskar Bros	1733.1	-1.16	1753.37
UltraTechCement	11950	-1.09	12081.39
Gillanders Arbu	106.77	-1.04	107.89

\* Stocks crossing below its Simple Moving Average (200DMA)



Nifty 50 Stocks - Summary Details											
Symbol	LTP	Chng	% Chng	Volume (lacs)	Turnover (crs.)	52w High	Diff with 52w H	52w Low	Diff with 52w L	365 days % chng	30 days % chng
NIFTY 50	24176.15	-150.50	-0.62%	3357.76	31210	26373	8.33%	22183	8.99%	0.75%	-0.40%
ADANIENT	2502.00	-11.70	-0.47%	14.99	378	2617	4.38%	1753	42.73%	22.42%	12.77%
ADANIPTS	1760.00	27.20	1.57%	49.85	878	1792	1.79%	1291	36.38%	21.10%	32.02%
APOLLOHOSP	8105.00	268.00	3.42%	9.23	741	8115	0.12%	6678	21.38%	9.50%	18.30%
ASIANPAINT	2600.00	69.40	2.74%	23.28	602	2986	12.92%	2115	22.93%	13.92%	12.92%
AXISBANK	1270.00	-22.70	-1.76%	63.59	808	1418	10.46%	1043	21.82%	-4.73%	8.34%
BAJAJ-AUTO	10696.50	91.50	0.86%	3.76	402	10785	0.82%	7612	40.52%	14.21%	38.47%
BAJAJFINSV	1814.00	-10.50	-0.58%	7.20	131	2195	17.36%	1597	13.59%	1.65%	-9.57%
BAJFINANCE	954.50	-18.25	-1.88%	55.55	532	1103	13.42%	788	21.14%	4.31%	8.07%
BEL	439.60	0.15	0.03%	111.60	492	473	7.15%	305	44.23%	1.50%	43.12%
BHARTIARTL	1834.70	8.10	0.44%	48.39	886	2175	15.63%	1747	5.03%	-1.44%	-2.14%
CIPLA	1348.00	-14.30	-1.05%	10.45	141	1673	19.43%	1166	15.64%	10.86%	-9.34%
COALINDIA	457.00	-9.65	-2.07%	157.66	722	491	6.97%	369	23.97%	1.73%	18.56%
DRREDDY	1295.00	-12.60	-0.96%	9.65	125	1380	6.14%	1129	14.66%	8.70%	12.80%
EICHERMOT	7315.00	-12.50	-0.17%	2.60	190	8230	11.12%	5220	40.15%	2.58%	36.16%
ETERNAL	256.15	-1.27	-0.49%	176.10	449	368	30.48%	213	20.48%	5.14%	11.46%
GRASIM	2966.00	5.40	0.18%	5.05	150	2980	0.48%	2503	18.52%	7.61%	9.90%
HCLTECH	1199.00	15.60	1.32%	28.13	336	1780	32.64%	1177	1.89%	-17.93%	-24.15%
HDFCBANK	781.00	-15.05	-1.89%	380.03	2970	1021	23.47%	727	7.48%	-4.30%	-19.00%
HDFCLIFE	620.00	-5.40	-0.86%	23.52	147	821	24.46%	555	11.69%	3.63%	-14.24%
HINDALCO	1044.70	-11.00	-1.04%	30.66	320	1080	3.27%	604	73.04%	9.76%	68.45%
HINDUNILVR	2286.00	13.80	0.61%	11.04	252	2750	16.87%	2023	13.03%	6.54%	-2.93%
ICICIBANK	1267.80	-11.20	-0.88%	111.37	1410	1500	15.48%	1188	6.75%	-3.16%	-11.68%
INDIGO	4522.00	15.10	0.34%	8.27	374	6233	27.44%	3895	16.09%	-2.03%	-12.13%
INFY	1179.50	16.80	1.44%	75.81	890	1728	31.74%	1150	2.58%	-12.38%	-21.96%
ITC	307.20	-0.20	-0.07%	177.37	545	444	30.84%	287	7.04%	1.57%	-28.66%
JIOFIN	249.01	-2.01	-0.80%	113.57	284	339	26.46%	223	11.51%	0.87%	-0.97%
JSWSTEEL	1277.00	-6.40	-0.50%	8.12	104	1307	2.28%	935	36.58%	6.92%	33.97%
KOTAKBANK	381.00	1.60	0.42%	161.82	612	453	15.93%	346	10.27%	0.22%	-9.83%
LT	3978.00	-45.00	-1.12%	16.20	644	4440	10.41%	3284	21.13%	-0.70%	19.68%
M&M	3331.50	-39.20	-1.16%	20.71	692	3840	13.24%	2896	15.04%	3.78%	9.84%
MARUTI	13722.00	-48.00	-0.35%	2.70	371	17370	21.00%	12016	14.20%	0.88%	10.73%
MAXHEALTH	1013.00	-2.30	-0.23%	18.35	186	1314	22.92%	903	12.18%	7.63%	-8.89%
NESTLEIND	1475.30	-0.70	-0.05%	14.71	219	1496	1.40%	1085	36.01%	21.55%	26.06%
NTPC	402.25	1.90	0.47%	47.40	190	414	2.93%	316	27.48%	7.51%	18.31%
ONGC	279.30	-4.60	-1.62%	92.88	260	308	9.17%	228	22.26%	-2.17%	19.76%
POWERGRID	313.85	0.05	0.02%	79.29	248	325	3.42%	250	25.54%	6.44%	1.82%
RELIANCE	1436.00	-0.20	-0.01%	86.62	1237	1612	10.91%	1290	11.32%	6.54%	2.06%
SBILIFE	1875.60	3.40	0.18%	6.73	126	2132	12.03%	1693	10.78%	-1.68%	8.32%
SBIN	1018.40	-73.60	-6.74%	480.39	4984	1235	17.52%	756	34.80%	-4.06%	32.43%
SHRIRAMFIN	1003.05	-12.60	-1.24%	57.55	579	1108	9.47%	567	77.06%	-1.97%	62.89%
SUNPHARMA	1845.00	10.60	0.58%	28.38	524	1858	0.69%	1548	19.19%	7.61%	4.40%
TATACONSUM	1176.60	24.90	2.16%	36.72	432	1221	3.63%	1007	16.82%	10.12%	5.43%
TATASTEEL	214.60	-2.49	-1.15%	177.56	383	219	2.10%	141	52.73%	5.10%	49.37%
TCS	2397.20	-4.20	-0.17%	37.92	905	3631	33.97%	2346	2.17%	-6.33%	-30.49%
TECHM	1460.90	12.70	0.88%	13.61	199	1854	21.20%	1304	12.02%	0.65%	-2.79%
TITAN	4517.00	209.50	4.86%	47.77	2140	4605	1.91%	3246	39.18%	0.55%	34.06%
TMPV	355.50	-3.75	-1.04%	46.15	164	744	52.22%	294	20.80%	6.20%	-47.94%
TRENT	4245.00	-49.10	-1.14%	5.42	231	6261	32.20%	3276	29.60%	8.71%	-18.78%
ULTRACEMCO	11951.00	-195.00	-1.61%	2.59	309	13110	8.84%	10325	15.75%	3.00%	2.75%
WIPRO	197.88	0.52	0.26%	159.46	315	273	27.54%	187	6.10%	-2.72%	-18.09%

## Disclaimer / Disclosures

### ANALYST CERTIFICATION

I, Mrs. Vaishali Parekh B.com, Research Analyst, author and the name subscribed to this report, hereby certify that all of the views expressed in this research report accurately reflect our views about the subject issuer(s) or securities. We also certify that no part of our compensation was, is, or will be directly or indirectly related to the specific recommendation(s) or view(s) in this report.

Terms & conditions and other disclosures:

Prabhudas Lilladher Pvt. Ltd, Mumbai, India (hereinafter referred to as "PL") is engaged in the business of Stock Broking, Portfolio Manager, Depository Participant and distribution for third party financial products. PL is a subsidiary of Prabhudas Lilladher Advisory Services Pvt Ltd. which has its various subsidiaries engaged in business of commodity broking, investment banking, financial services (margin funding) and distribution of third party financial/other products, details in respect of which are available at [www.plindia.com](http://www.plindia.com)

This document has been prepared by the Research Division of PL and is meant for use by the recipient only as information and is not for circulation. This document is not to be reported or copied or made available to others without prior permission of PL. It should not be considered or taken as an offer to sell or a solicitation to buy or sell any security.

The information contained in this report has been obtained from sources that are considered to be reliable. However, PL has not independently verified the accuracy or completeness of the same. Neither PL nor any of its affiliates, its directors or its employees accepts any responsibility of whatsoever nature for the information, statements and opinion given, made available or expressed herein or for any omission therein.

Recipients of this report should be aware that past performance is not necessarily a guide to future performance and value of investments can go down as well. The suitability or otherwise of any investments will depend upon the recipient's particular circumstances and, in case of doubt, advice should be sought from an independent expert/advisor.

Either PL or its affiliates or its directors or its employees or its representatives or its clients or their relatives may have position(s), make market, act as principal or engage in transactions of securities of companies referred to in this report and they may have used the research material prior to publication.

PL may from time to time solicit or perform investment banking or other services for any company mentioned in this document.

PL is registered as Research Analyst under Securities and Exchange Board of India (Research Analysts) Regulations, 2014 PL submits that no material disciplinary action has been taken on us by any Regulatory Authority impacting Equity Research Analysis activities.

PL or its research analysts or its associates or his relatives do not have any financial interest in the subject company.

PL or its research analysts or its associates or his relatives do not have actual/beneficial ownership of one per cent or more securities of the subject company at the end of the month immediately preceding the date of publication of the research report.

PL or its research analysts or its associates or his relatives do not have any material conflict of interest at the time of publication of the research report.

PL or its associates might have received compensation from the subject company in the past twelve months.

PL or its associates might have managed or co-managed public offering of securities for the subject company in the past twelve months or mandated by the subject company for any other assignment in the past twelve months.

PL or its associates might have received any compensation for investment banking or merchant banking or brokerage services from the subject company in the past twelve months.

PL or its associates might have received any compensation for products or services other than investment banking or merchant banking or brokerage services from the subject company in the past twelve months PL or its associates might have received any compensation or other benefits from the subject company or third party in connection with the research report.

PL encourages independence in research report preparation and strives to minimize conflict in preparation of research report. PL or its analysts did not receive any compensation or other benefits from the subject Company or third party in connection with the preparation of the research report. PL or its Research Analysts do not have any material conflict of interest at the time of publication of this report.

It is confirmed that Mrs. Vaishali Parekh B.com, Research Analyst of this report has not received any compensation from the companies mentioned in the report in the preceding twelve months compensation of our Research Analysts is not based on any specific merchant banking, investment banking or brokerage service transactions.

The Research analysts for this report certifies that all of the views expressed in this report accurately reflect his or her personal views about the subject company or companies and its or their securities, and no part of his or her compensation was, is or will be, directly or indirectly related to specific recommendations or views expressed in this report.

The research analysts for this report has not served as an officer, director or employee of the subject company PL or its research analysts have not engaged in market making activity for the subject company

Our sales people, traders, and other professionals or affiliates may provide oral or written market commentary or trading strategies to our clients that reflect opinions that are contrary to the opinions expressed herein, and our proprietary trading and investing businesses may make investment decisions that are inconsistent with the recommendations expressed herein. In reviewing these materials, you should be aware that any or all of the foregoing, among other things, may give rise to real or potential conflicts of interest.

PL and its associates, their directors and employees may (a) from time to time, have a long or short position in, and buy or sell the securities of the subject company or (b) be engaged in any other transaction involving such securities and earn brokerage or other compensation or act as a market maker in the financial instruments of the subject company or act as an advisor or lender/borrower to the subject company or may have any other potential conflict of interests with respect to any recommendation and other related information and opinions.

**Regd. Office:** 3<sup>rd</sup> Floor, Sadhana House, 570, P. B. Marg, Behind Mahindra Tower, Worli, Mumbai - 400 018, India.