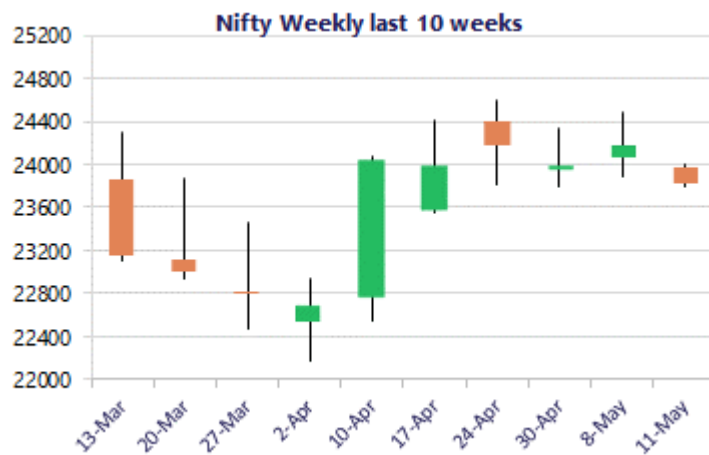
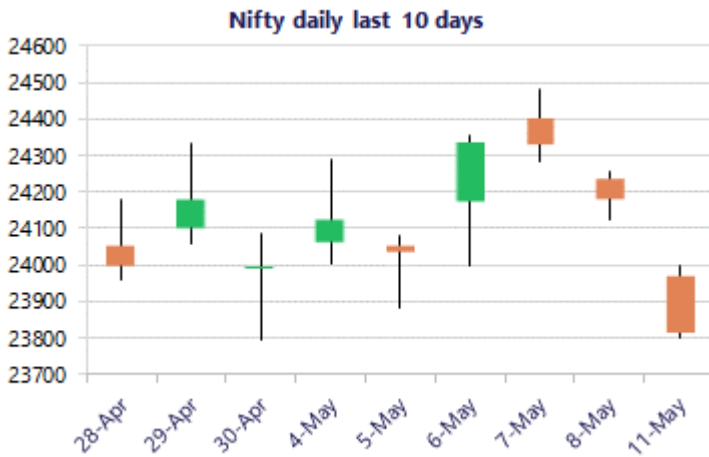


\* Sensex 76015.28 - 1312.91

\* Nifty 23815.85 - 360.30

\* Bank Nifty 54439.90 - 870.65



\*Blue candle → Close rate > Open rate \* Red candle → Close rate < Open rate

## Market Preview

### Nifty at crucial juncture of 23800 zone

Nifty witnessed a huge gap down opening below the important 24000 zone and further weakened in the later half to end near the 23800 zone with bias and sentiment getting weak. BankNifty slipped heavily with profit booking seen and closed near the crucial support zone of 54400 level and is precariously placed. The market breadth was weak with the advance decline indicating a ratio of 2:5 at close.

## Market Forecast

### Nifty daily range 23500 - 24000

Nifty tanked heavily with a gap down opening below the 24000 zone with the bias and sentiment turning very much cautious with the geo-political tensions in the middle east getting into a tense mode once again. The index is currently precariously placed near the important support zone of 23800 level which needs to be sustained failing which can trigger for fresh intensified selling pressure in the coming sessions. On the upside, the 24300 zone continues to be the tough resistance hurdle which needs to be breached decisively.

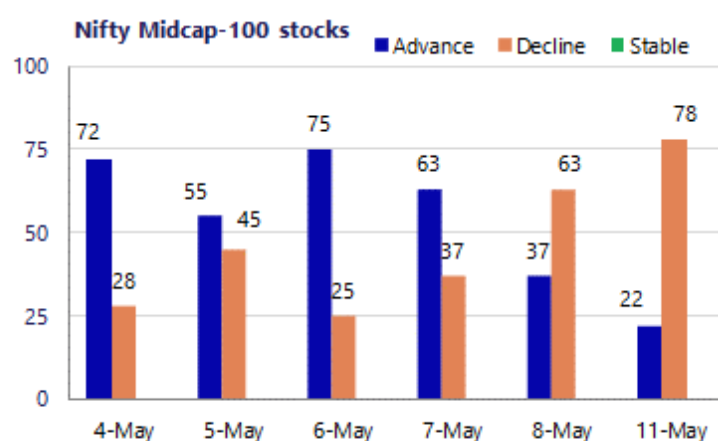
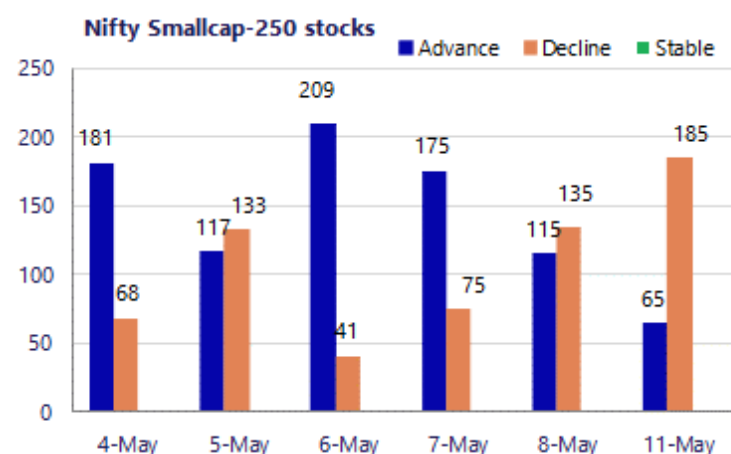
BankNifty witnessed heavy profit booking to slide down with bias turning weak and arriving near the important and crucial support zone of 54400 level and thereafter, has the major support positioned near the 53500 zone which needs to be sustained to maintain the overall trend intact. On the upside, as mentioned, the 200 period MA at 57200 level would be the important hurdle as of now which needs to be breached above decisively to improve the bias and expect for further upward move in the coming days.

The support for the day is seen at 23500 levels, while the resistance is seen at 24000 levels. BankNifty would have the daily range of 53500-55300 levels.

Sensex	Period	Closing	% Chng	Trend	Reversal	2 Sup	1 Sup	Pivot	1 Res	2 Res
	Daily	23815.85	-1.49%	-2	24146.00	23672	23744	23871	23943	24069
Nifty	Weekly	24176.15	0.74%	5	23398.25	23664	23920	24138	24394	24613
	Monthly	23997.55	7.46%	-4	26009.10	21175	22586	23594	25005	26013
Bank Nifty	Daily	54439.90	-1.57%	-1	55047.75	53959	54200	54601	54841	55243
	Weekly	55310.55	0.82%	5	54024.35	53347	54329	55204	56186	57061
	Monthly	54863.35	9.13%	-2	62653.00	46590	50727	54092	58228	61593
	Daily	76015.28	-1.70%	-2	77169.50	75496	75756	76217	76477	76938
Sensex	Weekly	77328.19	0.54%	5	75063.20	75781	76555	77289	78062	78796
	Monthly	76913.50	6.90%	-4	83783.80	68121	72517	75942	80338	83763

**Gainers - Losers ( Nifty 500 Stocks )**

Gainers				Losers			
Company Name	Last Price	% Gain	Volume	Company Name	Last Price	% Loss	Volume
AFFLE 3I	1637.5	8.71%	8857507	ABB India	6,387.50	-8.91%	2419158
Ather Energy	969.45	5.95%	13470420	Aditya Birla Re	1378	-7.26%	1209193
Abbott India	27795	4.10%	39203	ABLBL	107.66	-5.61%	1536564
Bank of India	143.86	2.93%	31962054	Aegis Logistics	686.80	-4.73%	1226470
Acutaas Chem	2,810.30	2.78%	575156	Berger Paints	493.85	-4.25%	259603
Biocon	390.45	2.64%	12927124	Ashok Leyland	161.52	-4.18%	15628896
ACME Solar	290.25	2.63%	5020984	Afcons Infra	326.65	-4.12%	482427



### Nifty Daily chart with RSI indicator



### BankNifty Daily chart with RSI indicator

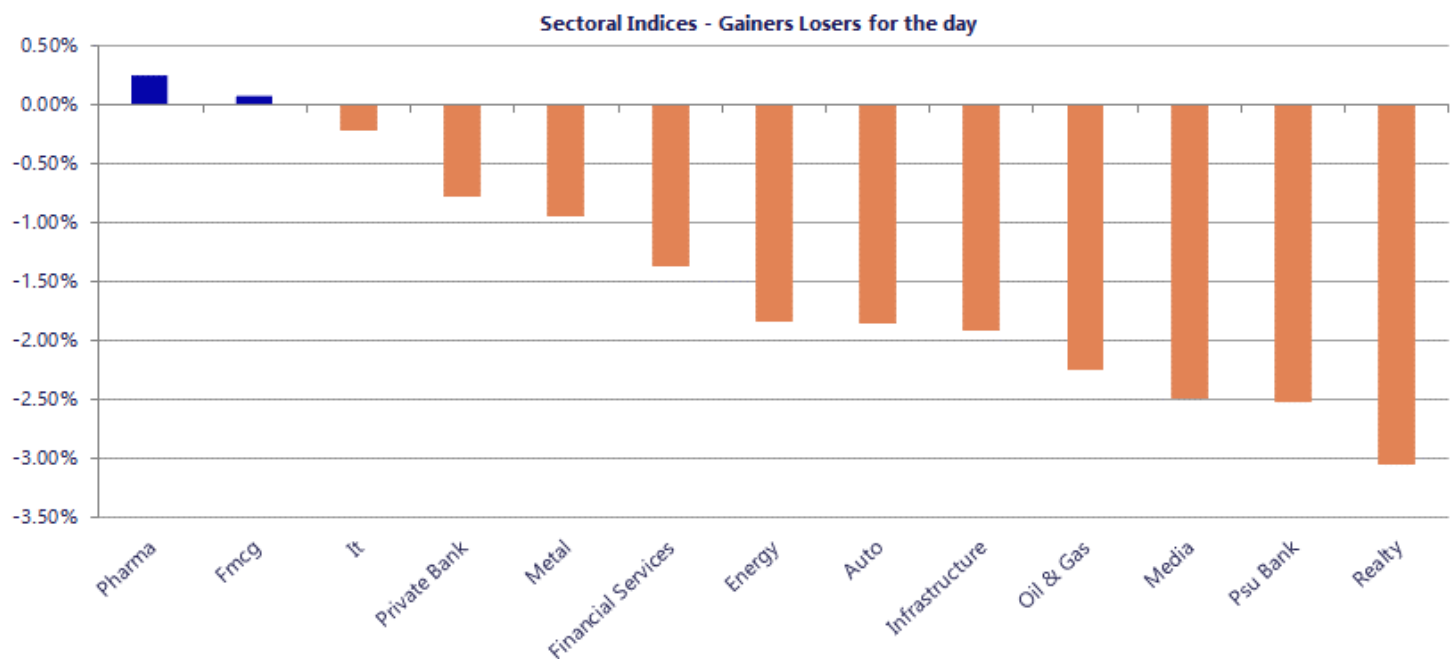


Breakouts - Cross above 200 DMA			
Company Name	LCP	Change %	200 DMA
Yasho Ind.	1713.8	9.21	1569.25
Spectrum Electr	1403.4	4.83	1338.77
Hester Bio	1730.5	3.02	1679.73
Creative New	677	2.91	657.87
Ishan Dyes	63.96	2.19	62.59
Themis Medicare	104.53	1.95	102.53
Orchid Pharma	720.05	1.91	706.57
Global Health	1239.2	1.77	1217.62
Zydus Life	956.95	1.50	942.77
Inspirisys Solu	92.09	1.13	91.06
QMS Medical	90	1.10	89.02
Diffusion Engin	320.85	1.07	317.46
Bannariamman	3661.6	1.02	3624.71
Exicom Tele-Sys	123.56	0.91	122.44
UFO Moviez	75.17	0.87	74.52
NK Industries	67.2	0.79	66.67
Vardhman Hold	3647.6	0.72	3621.53
Gokul Refoils	40.23	0.68	39.96

\* Stocks crossing above its Simple Moving Average (200DMA)

Breakdown - Cross below 200 DMA			
Company Name	LCP	Change %	200 DMA
K2 Infragen	55.35	-8.27	60.34
Blue Dart	5258.5	-7.03	5656
Rulka Elec.	106.95	-4.70	112.23
Tasty Bite	8015.5	-4.39	8383.87
Anup Eng	2067.6	-3.86	2150.72
Berger Paints	493.85	-3.64	512.49
Prozone Intu	49.96	-3.59	51.82
KDDL	2363.3	-3.34	2445.08
SUMITOMO	466.45	-3.28	482.28
Tejas Networks	471.7	-3.21	487.35
Reliance	1388.2	-3.15	1433.28
Vesuvius India	482.25	-2.77	495.97
Suprajit Eng	433.4	-2.62	445.08
Osel Devices	540.25	-2.59	554.61
PVR INOX	1026	-2.56	1052.97
Service Care	52	-2.49	53.33
Banaras Beads	117.4	-2.44	120.34
Swelect Energy	655.65	-2.43	671.95

\* Stocks crossing below its Simple Moving Average (200DMA)



Nifty 50 Stocks - Summary Details											
Symbol	LTP	Chng	% Chng	Volume (lacs)	Turnover (crs.)	52w High	Diff with 52w H	52w Low	Diff with 52w L	365 days % chng	30 days % chng
NIFTY 50	23815.85	-360.30	-1.49%	3900.05	37398	26373	9.70%	22183	7.36%	-0.98%	-0.80%
ADANIENT	2501.00	-4.90	-0.20%	12.79	318	2617	4.41%	1753	42.67%	19.85%	14.44%
ADANIPTS	1766.50	6.10	0.35%	41.11	723	1792	1.42%	1291	36.88%	19.74%	35.23%
APOLLOHOSP	8079.00	-18.00	-0.22%	4.66	377	8144	0.80%	6678	20.99%	7.56%	20.19%
ASIANPAINT	2568.00	-31.90	-1.23%	12.71	328	2986	13.99%	2115	21.42%	8.78%	11.67%
AXISBANK	1267.90	-0.40	-0.03%	73.38	934	1418	10.60%	1043	21.62%	-6.14%	10.15%
BAJAJ-AUTO	10596.00	-115.50	-1.08%	2.57	272	10785	1.75%	7612	39.20%	7.97%	37.92%
BAJAJFINSV	1787.90	-30.40	-1.67%	5.42	98	2195	18.55%	1597	11.95%	-1.18%	-9.24%
BAJFINANCE	935.50	-19.85	-2.08%	55.80	527	1103	15.15%	788	18.73%	1.18%	8.26%
BEL	432.80	-6.90	-1.57%	76.30	331	473	8.59%	305	41.99%	-2.18%	37.03%
BHARTIARTL	1764.90	-69.60	-3.79%	158.04	2798	2175	18.84%	1747	1.03%	-5.62%	-4.52%
CIPLA	1305.50	-41.50	-3.08%	14.28	188	1673	21.97%	1166	11.99%	6.18%	-11.79%
COALINDIA	463.65	7.25	1.59%	62.53	289	491	5.62%	369	25.77%	6.81%	21.25%
DRREDDY	1282.00	-11.90	-0.92%	15.07	194	1380	7.08%	1139	12.60%	4.04%	10.91%
EICHERMOT	7205.00	-97.50	-1.34%	3.21	231	8230	12.45%	5220	38.04%	-2.95%	35.33%
ETERNAL	246.05	-10.34	-4.03%	335.40	830	368	33.22%	213	15.73%	2.42%	8.33%
GRASIM	2983.00	14.40	0.49%	5.68	169	3007	0.81%	2503	19.20%	8.77%	13.22%
HCLTECH	1195.00	-3.40	-0.28%	25.06	301	1780	32.87%	1177	1.55%	-17.65%	-23.86%
HDFCBANK	766.25	-14.60	-1.87%	411.22	3163	1021	24.91%	727	5.45%	-5.44%	-18.90%
HDFCLIFE	620.95	-0.75	-0.12%	37.40	232	821	24.34%	555	11.86%	2.78%	-12.98%
HINDALCO	1025.40	-19.00	-1.82%	37.46	386	1080	5.06%	604	69.84%	3.36%	63.50%
HINDUNILVR	2309.90	22.20	0.97%	19.04	438	2750	16.00%	2023	14.21%	7.17%	-0.99%
ICICIBANK	1267.20	2.40	0.19%	189.80	2407	1500	15.52%	1188	6.70%	-4.14%	-8.76%
INDIGO	4309.00	-213.70	-4.73%	17.91	774	6233	30.86%	3895	10.62%	-5.38%	-15.53%
INFY	1176.00	-3.20	-0.27%	73.35	866	1728	31.94%	1150	2.28%	-9.01%	-22.00%
ITC	305.70	-1.75	-0.57%	149.62	459	444	31.18%	287	6.52%	0.48%	-27.82%
JIOFIN	239.85	-9.49	-3.81%	188.32	456	339	29.16%	223	7.41%	-1.38%	-3.42%
JSWSTEEL	1259.30	-18.50	-1.45%	10.24	130	1307	3.63%	935	34.68%	3.66%	31.59%
KOTAKBANK	380.45	-0.35	-0.09%	213.45	815	453	16.05%	346	10.12%	1.58%	-9.55%
LT	3940.00	-34.50	-0.87%	20.27	795	4440	11.26%	3288	19.83%	-0.50%	14.41%
M&M	3246.00	-84.40	-2.53%	23.21	756	3840	15.47%	2896	12.09%	-0.42%	8.85%
MARUTI	13496.00	-230.00	-1.68%	6.34	859	17370	22.30%	12016	12.32%	-1.55%	10.17%
MAXHEALTH	1040.00	27.50	2.72%	30.43	314	1314	20.87%	903	15.17%	9.09%	-7.78%
NESTLEIND	1474.40	-8.00	-0.54%	13.58	202	1498	1.58%	1085	35.93%	18.02%	26.81%
NTPC	392.20	-9.95	-2.47%	100.85	401	414	5.36%	316	24.29%	3.17%	17.16%
ONGC	280.45	1.25	0.45%	69.44	194	308	8.80%	228	22.76%	-2.11%	19.36%
POWERGRID	310.55	-3.40	-1.08%	82.02	255	325	4.43%	250	24.22%	2.58%	3.76%
RELIANCE	1385.30	-49.90	-3.48%	152.56	2140	1612	14.05%	1290	7.39%	2.60%	0.59%
SBILIFE	1878.10	6.00	0.32%	6.73	127	2132	11.91%	1693	10.93%	-2.35%	10.49%
SBIN	974.90	-44.40	-4.36%	469.24	4601	1235	21.04%	756	29.04%	-8.61%	25.11%
SHRIRAMFIN	977.00	-30.75	-3.05%	59.26	581	1108	11.82%	567	72.46%	-4.92%	62.44%
SUNPHARMA	1875.00	27.10	1.47%	25.65	480	1886	0.57%	1548	21.12%	13.30%	7.46%
TATACONSUM	1270.90	94.70	8.05%	192.02	2386	1279	0.66%	1007	26.18%	16.20%	14.12%
TATASTEEL	212.00	-2.49	-1.16%	162.96	347	219	3.28%	141	50.88%	2.61%	48.48%
TCS	2400.00	5.60	0.23%	19.75	474	3631	33.89%	2346	2.29%	-4.92%	-30.24%
TECHM	1457.20	-5.80	-0.40%	13.48	197	1854	21.40%	1304	11.74%	1.18%	-2.44%
TITAN	4200.00	-309.00	-6.85%	59.24	2502	4605	8.79%	3303	27.15%	-6.77%	19.65%
TMPV	345.90	-9.55	-2.69%	42.82	149	744	53.51%	294	17.53%	0.96%	-51.18%
TRENT	4184.20	-58.10	-1.37%	4.48	187	6261	33.17%	3276	27.74%	6.84%	-18.17%
ULTRACEMCO	11871.00	-79.00	-0.66%	1.99	236	13110	9.45%	10325	14.97%	2.43%	4.46%
WIPRO	196.20	-1.71	-0.86%	91.90	181	273	28.16%	187	5.20%	-4.24%	-18.93%

## Disclaimer / Disclosures

### ANALYST CERTIFICATION

I, Mrs. Vaishali Parekh B.com, Research Analyst, author and the name subscribed to this report, hereby certify that all of the views expressed in this research report accurately reflect our views about the subject issuer(s) or securities. We also certify that no part of our compensation was, is, or will be directly or indirectly related to the specific recommendation(s) or view(s) in this report.

Terms & conditions and other disclosures:

Prabhudas Lilladher Pvt. Ltd, Mumbai, India (hereinafter referred to as "PL") is engaged in the business of Stock Broking, Portfolio Manager, Depository Participant and distribution for third party financial products. PL is a subsidiary of Prabhudas Lilladher Advisory Services Pvt Ltd. which has its various subsidiaries engaged in business of commodity broking, investment banking, financial services (margin funding) and distribution of third party financial/other products, details in respect of which are available at [www.plindia.com](http://www.plindia.com)

This document has been prepared by the Research Division of PL and is meant for use by the recipient only as information and is not for circulation. This document is not to be reported or copied or made available to others without prior permission of PL. It should not be considered or taken as an offer to sell or a solicitation to buy or sell any security.

The information contained in this report has been obtained from sources that are considered to be reliable. However, PL has not independently verified the accuracy or completeness of the same. Neither PL nor any of its affiliates, its directors or its employees accepts any responsibility of whatsoever nature for the information, statements and opinion given, made available or expressed herein or for any omission therein.

Recipients of this report should be aware that past performance is not necessarily a guide to future performance and value of investments can go down as well. The suitability or otherwise of any investments will depend upon the recipient's particular circumstances and, in case of doubt, advice should be sought from an independent expert/advisor.

Either PL or its affiliates or its directors or its employees or its representatives or its clients or their relatives may have position(s), make market, act as principal or engage in transactions of securities of companies referred to in this report and they may have used the research material prior to publication.

PL may from time to time solicit or perform investment banking or other services for any company mentioned in this document.

PL is registered as Research Analyst under Securities and Exchange Board of India (Research Analysts) Regulations, 2014 PL submits that no material disciplinary action has been taken on us by any Regulatory Authority impacting Equity Research Analysis activities.

PL or its research analysts or its associates or his relatives do not have any financial interest in the subject company.

PL or its research analysts or its associates or his relatives do not have actual/beneficial ownership of one per cent or more securities of the subject company at the end of the month immediately preceding the date of publication of the research report.

PL or its research analysts or its associates or his relatives do not have any material conflict of interest at the time of publication of the research report.

PL or its associates might have received compensation from the subject company in the past twelve months.

PL or its associates might have managed or co-managed public offering of securities for the subject company in the past twelve months or mandated by the subject company for any other assignment in the past twelve months.

PL or its associates might have received any compensation for investment banking or merchant banking or brokerage services from the subject company in the past twelve months.

PL or its associates might have received any compensation for products or services other than investment banking or merchant banking or brokerage services from the subject company in the past twelve months PL or its associates might have received any compensation or other benefits from the subject company or third party in connection with the research report.

PL encourages independence in research report preparation and strives to minimize conflict in preparation of research report. PL or its analysts did not receive any compensation or other benefits from the subject Company or third party in connection with the preparation of the research report. PL or its Research Analysts do not have any material conflict of interest at the time of publication of this report.

It is confirmed that Mrs. Vaishali Parekh B.com, Research Analyst of this report has not received any compensation from the companies mentioned in the report in the preceding twelve months compensation of our Research Analysts is not based on any specific merchant banking, investment banking or brokerage service transactions.

The Research analysts for this report certifies that all of the views expressed in this report accurately reflect his or her personal views about the subject company or companies and its or their securities, and no part of his or her compensation was, is or will be, directly or indirectly related to specific recommendations or views expressed in this report.

The research analysts for this report has not served as an officer, director or employee of the subject company PL or its research analysts have not engaged in market making activity for the subject company

Our sales people, traders, and other professionals or affiliates may provide oral or written market commentary or trading strategies to our clients that reflect opinions that are contrary to the opinions expressed herein, and our proprietary trading and investing businesses may make investment decisions that are inconsistent with the recommendations expressed herein. In reviewing these materials, you should be aware that any or all of the foregoing, among other things, may give rise to real or potential conflicts of interest.

PL and its associates, their directors and employees may (a) from time to time, have a long or short position in, and buy or sell the securities of the subject company or (b) be engaged in any other transaction involving such securities and earn brokerage or other compensation or act as a market maker in the financial instruments of the subject company or act as an advisor or lender/borrower to the subject company or may have any other potential conflict of interests with respect to any recommendation and other related information and opinions.

**Regd. Office:** 3<sup>rd</sup> Floor, Sadhana House, 570, P. B. Marg, Behind Mahindra Tower, Worli, Mumbai - 400 018, India.