

* Sensex 74559.24 - 1456.04

* Nifty 23379.55 - 436.30

* Bank Nifty 53555.20 - 884.70

Market Preview

Nifty tanks below the 23500 zone

Nifty was succumbed to heavy selling pressure during the session with bias and sentiment currently maintained with a very cautious approach and the overall trend turning weak. BankNifty tanked below the important 54400 zone with intensified profit booking and currently the crucial zone of 53500 level is under threat. The market breadth was weak with the advance decline indicating a ratio of 1:6 at close.

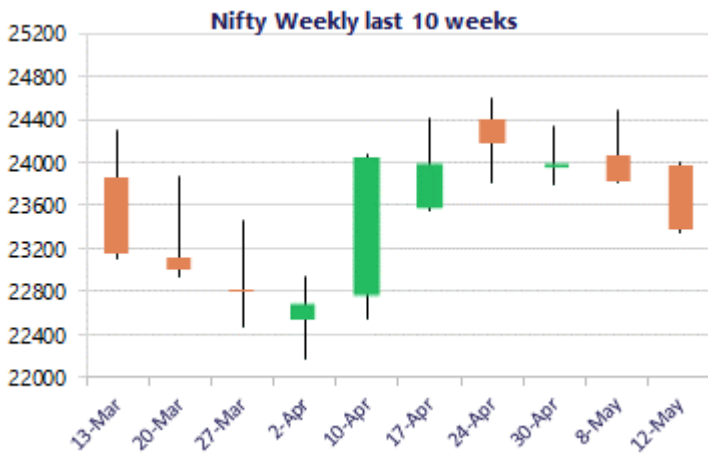
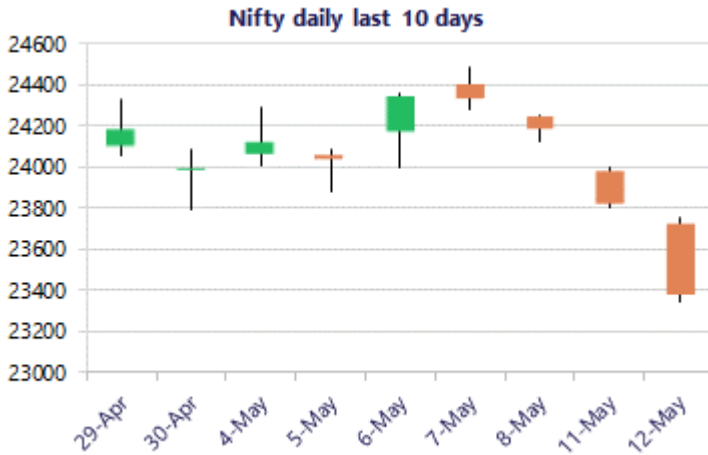
Market Forecast

Nifty daily range 23000 - 23700

Nifty crashed below the important 23500 zone with heavy selling pressure continuing indicating a big bearish candle on the daily chart with the trend getting weak anticipating for further slide in the coming sessions. The index breaching below the important support zone of 23800 level with the broader markets witnessing intensified selling pressure has triggered for the sentiment to turn very cautious and on the downside, the levels of 23000 and 22200 levels are wide open for the coming days.

BankNifty tanked heavily to slide further down to break the important support zone of 54400 level to arrive near the major and crucial support zone of 53500 level with the trend getting weak and can expect for further downward movement in the coming sessions. The index would have the downside targets of 51800 and the 50000 levels as the important zone to be watched for in the coming days.

The support for the day is seen at 23000 levels, while the resistance is seen at 23700 levels. BankNifty would have the daily range of 52600-54500 levels.

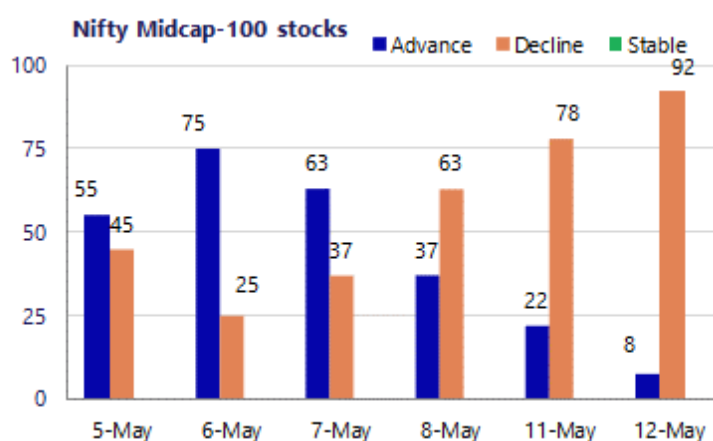
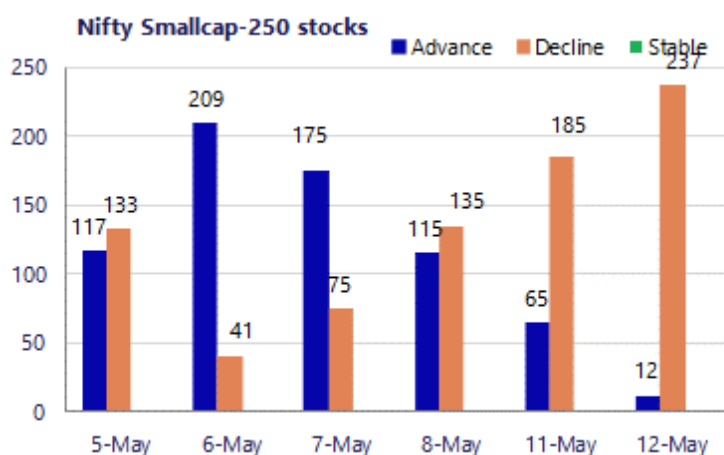


*Blue candle → Close rate > Open rate * Red candle → Close rate < Open rate

Sensex	Period	Closing	% Chng	Trend	Reversal	2 Sup	1 Sup	Pivot	1 Res	2 Res
Nifty	Daily	23379.55	-1.83%	-3	24009.90	23086	23233	23495	23642	23904
	Weekly	24176.15	0.74%	5	23398.25	23664	23920	24138	24394	24613
	Monthly	23997.55	7.46%	-4	26009.10	21175	22586	23594	25005	26013
Bank Nifty	Daily	53555.20	-1.63%	-2	54708.10	52885	53220	53793	54128	54701
	Weekly	55310.55	0.82%	5	54024.35	53347	54329	55204	56186	57061
	Monthly	54863.35	9.13%	-2	62653.00	46590	50727	54092	58228	61593
Sensex	Daily	74559.24	-1.92%	-3	76603.20	73624	74092	74917	75384	76209
	Weekly	77328.19	0.54%	5	75063.20	75781	76555	77289	78062	78796
	Monthly	76913.50	6.90%	-4	83783.80	68121	72517	75942	80338	83763

Gainers - Losers (Nifty 500 Stocks)

Gainers				Losers			
Company Name	Last Price	% Gain	Volume	Company Name	Last Price	% Loss	Volume
Biocon	402.45	3.07%	11229871	Anant Raj	502.45	-6.70%	4789359
Brainbees Solu	235.48	2.60%	7155464	BEML	1792.9	-6.17%	283482
Afcons Infra	335.1	2.59%	11903368	Belrise Ind	205.30	-5.88%	3826759
Anthem Bioscienc	799.05	1.89%	696110	Adani Green Ene	1,308.00	-5.74%	5167251
Balrampur Chini	534.15	1.67%	964998	Angel One	299.10	-5.71%	8631114
Ajanta Pharma	3,091.70	0.90%	237931	Adani Power	209.63	-5.58%	46013943
Aurobindo Pharm	1,488.20	0.11%	1343333	ABLBL	101.66	-5.57%	926421



Nifty Daily chart with RSI indicator



BankNifty Daily chart with RSI indicator

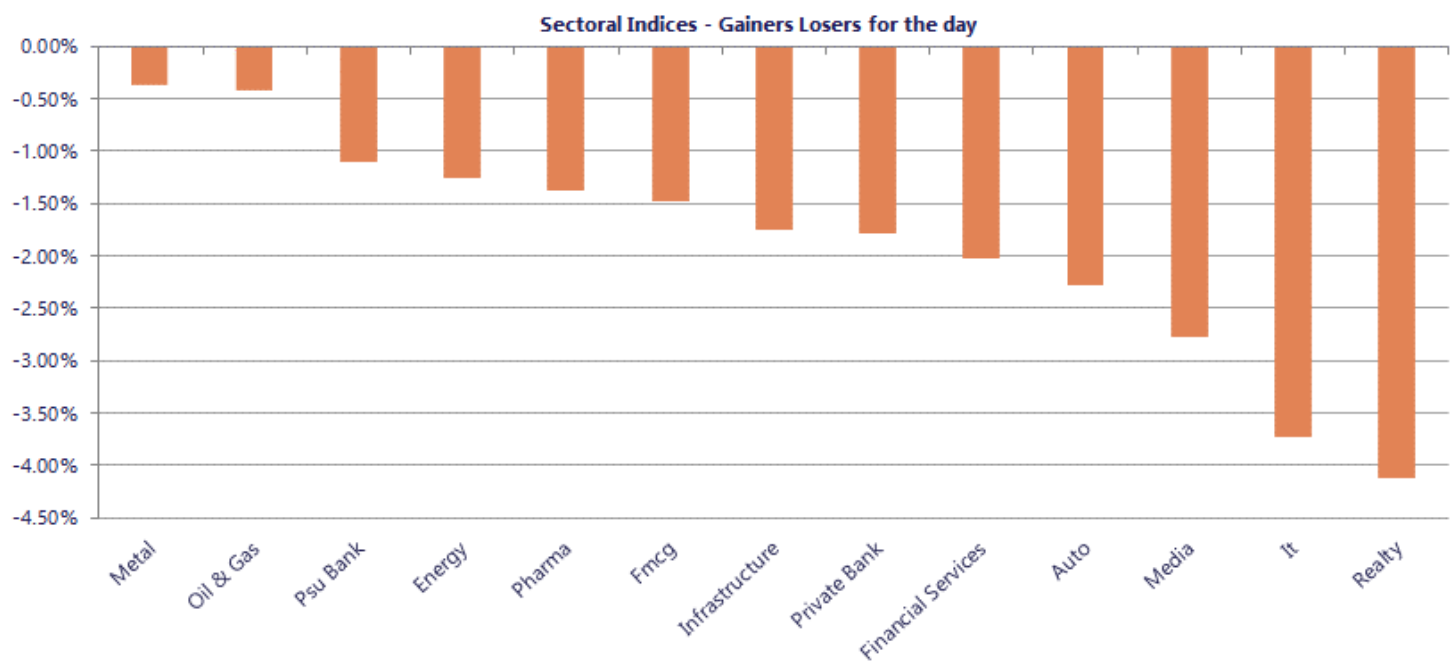


Breakouts - Cross above 200 DMA			
Company Name	LCP	Change %	200 DMA
Butterfly	708.6	5.84	669.48
Krystal Integra	621.4	4.60	594.08
Jindal Drilling	571.8	3.58	552.03
Semac Construct	373	1.76	366.56
Sungarner	222.95	1.71	219.21
Mask Investment	155.95	1.08	154.28
Orissa Bengal C	56.18	1.02	55.61
Deep Ind	459.35	0.77	455.84
Embassy Office	422.35	0.06	422.08

Breakdown - Cross below 200 DMA			
Company Name	LCP	Change %	200 DMA
Garuda Const	172.68	-8.51	188.74
Dynamic Cables	328.7	-7.93	357
Exicom Tele-Sys	113.99	-6.70	122.17
Vilas Transcore	410.75	-6.64	439.98
Gujarat Apollo	410.45	-6.15	437.34
DCX Systems	196.91	-5.94	209.34
Mindteck	202.93	-5.57	214.9
Themis Medicare	96.77	-5.53	102.43
Senco Gold	312.75	-5.46	330.82
Crown Lifters	131.91	-5.39	139.42
Precision Camsh	158.14	-5.19	166.8
Home First	1108.2	-5.19	1168.87
Bansal Wire Ind	298.55	-5.11	314.63
Indo-National	384.6	-5.03	404.96
Inox Green Ener	178.69	-4.82	187.74
Enviro Infra	203.03	-4.58	212.77
QMS Medical	85	-4.53	89.03
BEML	1792.9	-4.52	1877.82

* Stocks crossing above its Simple Moving Average (200DMA)

* Stocks crossing below its Simple Moving Average (200DMA)



Nifty 50 Stocks - Summary Details											
Symbol	LTP	Chng	% Chng	Volume (lacs)	Turnover (crs.)	52w High	Diff with 52w H	52w Low	Diff with 52w L	365 days % chng	30 days % chng
NIFTY 50	23379.55	-436.30	-1.83%	4474.58	36197	26373	11.35%	22183	5.40%	-2.79%	-6.20%
ADANIENT	2401.10	-99.10	-3.96%	14.59	356	2617	8.23%	1753	36.97%	15.06%	1.97%
ADANIPTS	1691.00	-76.30	-4.32%	34.40	588	1792	5.64%	1291	31.03%	14.62%	24.15%
APOLLOHOSP	8026.00	-56.00	-0.69%	3.90	313	8144	1.45%	6697	19.85%	6.85%	15.88%
ASIANPAINT	2508.00	-58.10	-2.26%	6.29	158	2986	16.00%	2115	18.58%	6.24%	6.43%
AXISBANK	1263.50	-8.80	-0.69%	57.28	724	1418	10.91%	1043	21.20%	-6.46%	5.03%
BAJAJ-AUTO	10405.00	-190.50	-1.80%	4.09	431	10785	3.52%	7778	33.77%	6.03%	29.42%
BAJAJFINSV	1748.00	-46.20	-2.57%	10.42	184	2195	20.36%	1597	9.46%	-3.38%	-14.75%
BAJFINANCE	907.00	-29.05	-3.10%	71.74	654	1103	17.73%	788	15.12%	-1.90%	0.57%
BEL	418.30	-13.65	-3.16%	151.99	641	473	11.65%	316	32.29%	-5.46%	29.58%
BHARTIARTL	1762.80	3.00	0.17%	119.45	2107	2175	18.93%	1747	0.91%	-5.73%	-5.77%
CIPLA	1293.70	-11.20	-0.86%	13.98	182	1673	22.67%	1166	10.98%	5.22%	-14.42%
COALINDIA	462.60	-1.85	-0.40%	64.63	301	491	5.83%	369	25.48%	6.57%	16.97%
DRREDDY	1267.50	-12.40	-0.97%	19.45	249	1380	8.13%	1144	10.81%	2.86%	6.01%
EICHERMOT	7125.00	-77.50	-1.08%	3.64	262	8230	13.43%	5220	36.51%	-4.03%	29.08%
ETERNAL	240.75	-5.12	-2.08%	248.63	602	368	34.66%	213	13.24%	0.22%	0.52%
GRASIM	2904.10	-80.10	-2.68%	4.68	137	3007	3.43%	2503	16.05%	5.89%	5.88%
HCLTECH	1147.00	-47.90	-4.01%	39.58	457	1780	35.57%	1143	0.39%	-20.96%	-31.33%
HDFCBANK	755.00	-8.65	-1.13%	439.30	3311	1021	26.02%	727	3.90%	-6.82%	-22.85%
HDFCLIFE	602.95	-19.75	-3.17%	27.89	170	821	26.54%	555	8.62%	-0.20%	-17.92%
HINDALCO	1042.50	19.00	1.86%	43.23	451	1080	3.47%	618	68.69%	5.08%	59.90%
HINDUNILVR	2267.00	-40.20	-1.74%	9.84	224	2750	17.56%	2023	12.09%	5.18%	-4.85%
ICICIBANK	1244.50	-21.90	-1.73%	211.10	2627	1500	17.03%	1188	4.79%	-5.86%	-14.08%
INDIGO	4228.20	-71.20	-1.66%	7.58	322	6233	32.16%	3895	8.55%	-7.16%	-22.79%
INFY	1139.70	-37.30	-3.17%	168.90	1921	1728	34.05%	1123	1.49%	-11.82%	-29.95%
ITC	300.85	-5.00	-1.63%	159.65	484	444	32.27%	287	4.83%	-1.12%	-30.92%
JIOFIN	230.75	-9.58	-3.99%	216.52	507	339	31.85%	223	3.34%	-5.12%	-12.23%
JSWSTEEL	1252.20	-10.40	-0.82%	14.76	185	1307	4.18%	962	30.15%	3.08%	24.57%
KOTAKBANK	376.00	-5.05	-1.33%	130.64	493	453	17.03%	346	8.83%	0.39%	-12.35%
LT	3865.00	-75.20	-1.91%	22.55	875	4440	12.95%	3288	17.55%	-2.40%	7.74%
M&M	3189.60	-56.30	-1.73%	26.38	847	3840	16.94%	2896	10.14%	-2.15%	2.73%
MARUTI	13188.00	-295.00	-2.19%	3.02	401	17370	24.08%	12016	9.75%	-3.80%	4.53%
MAXHEALTH	1017.70	-20.25	-1.95%	18.91	195	1314	22.57%	903	12.70%	6.75%	-12.26%
NESTLEIND	1467.50	-14.40	-0.97%	10.16	150	1498	2.04%	1085	35.29%	17.47%	23.12%
NTPC	392.90	-0.05	-0.01%	102.47	405	414	5.19%	316	24.51%	3.35%	12.72%
ONGC	294.20	13.20	4.70%	520.75	1540	308	4.33%	229	28.69%	2.69%	20.56%
POWERGRID	306.50	-4.40	-1.42%	79.49	245	325	5.68%	250	22.60%	1.24%	-0.83%
RELIANCE	1366.50	-21.70	-1.56%	243.55	3351	1612	15.22%	1290	5.93%	1.21%	-4.87%
SBILIFE	1842.90	-41.50	-2.20%	12.91	238	2132	13.56%	1720	7.15%	-4.18%	5.22%
SBIN	976.10	2.50	0.26%	257.86	2507	1235	20.94%	779	25.29%	-8.49%	21.76%
SHRIRAMFIN	933.90	-42.05	-4.31%	86.74	818	1108	15.71%	567	64.85%	-9.11%	44.58%
SUNPHARMA	1844.80	-27.90	-1.49%	32.63	608	1886	2.17%	1548	19.17%	11.48%	9.41%
TATACONSUM	1252.30	-18.70	-1.47%	33.58	425	1283	2.37%	1007	24.33%	14.50%	9.31%
TATASTEEL	211.70	-0.38	-0.18%	283.69	605	219	3.42%	145	46.51%	2.46%	39.62%
TCS	2303.50	-89.40	-3.74%	63.47	1461	3631	36.55%	2283	0.90%	-8.75%	-36.37%
TECHM	1396.00	-61.40	-4.21%	14.75	207	1854	24.70%	1304	7.05%	-3.07%	-11.26%
TITAN	4058.40	-147.20	-3.50%	19.78	815	4605	11.87%	3303	22.87%	-9.91%	13.91%
TMPV	337.95	-8.05	-2.33%	57.58	196	744	54.58%	294	14.83%	-1.36%	-53.11%
TRENT	4048.50	-132.60	-3.17%	8.38	343	6261	35.34%	3276	23.60%	3.37%	-25.59%
ULTRACEMCO	11525.00	-341.00	-2.87%	3.44	401	13110	12.09%	10325	11.62%	-0.55%	-1.80%
WIPRO	190.30	-6.38	-3.24%	274.32	524	273	30.32%	187	2.04%	-7.12%	-26.03%

Disclaimer / Disclosures

ANALYST CERTIFICATION

I, Mrs. Vaishali Parekh B.com, Research Analyst, author and the name subscribed to this report, hereby certify that all of the views expressed in this research report accurately reflect our views about the subject issuer(s) or securities. We also certify that no part of our compensation was, is, or will be directly or indirectly related to the specific recommendation(s) or view(s) in this report.

Terms & conditions and other disclosures:

Prabhudas Lilladher Pvt. Ltd, Mumbai, India (hereinafter referred to as "PL") is engaged in the business of Stock Broking, Portfolio Manager, Depository Participant and distribution for third party financial products. PL is a subsidiary of Prabhudas Lilladher Advisory Services Pvt Ltd. which has its various subsidiaries engaged in business of commodity broking, investment banking, financial services (margin funding) and distribution of third party financial/other products, details in respect of which are available at www.plindia.com

This document has been prepared by the Research Division of PL and is meant for use by the recipient only as information and is not for circulation. This document is not to be reported or copied or made available to others without prior permission of PL. It should not be considered or taken as an offer to sell or a solicitation to buy or sell any security.

The information contained in this report has been obtained from sources that are considered to be reliable. However, PL has not independently verified the accuracy or completeness of the same. Neither PL nor any of its affiliates, its directors or its employees accepts any responsibility of whatsoever nature for the information, statements and opinion given, made available or expressed herein or for any omission therein.

Recipients of this report should be aware that past performance is not necessarily a guide to future performance and value of investments can go down as well. The suitability or otherwise of any investments will depend upon the recipient's particular circumstances and, in case of doubt, advice should be sought from an independent expert/advisor.

Either PL or its affiliates or its directors or its employees or its representatives or its clients or their relatives may have position(s), make market, act as principal or engage in transactions of securities of companies referred to in this report and they may have used the research material prior to publication.

PL may from time to time solicit or perform investment banking or other services for any company mentioned in this document.

PL is registered as Research Analyst under Securities and Exchange Board of India (Research Analysts) Regulations, 2014 PL submits that no material disciplinary action has been taken on us by any Regulatory Authority impacting Equity Research Analysis activities.

PL or its research analysts or its associates or his relatives do not have any financial interest in the subject company.

PL or its research analysts or its associates or his relatives do not have actual/beneficial ownership of one per cent or more securities of the subject company at the end of the month immediately preceding the date of publication of the research report.

PL or its research analysts or its associates or his relatives do not have any material conflict of interest at the time of publication of the research report.

PL or its associates might have received compensation from the subject company in the past twelve months.

PL or its associates might have managed or co-managed public offering of securities for the subject company in the past twelve months or mandated by the subject company for any other assignment in the past twelve months.

PL or its associates might have received any compensation for investment banking or merchant banking or brokerage services from the subject company in the past twelve months.

PL or its associates might have received any compensation for products or services other than investment banking or merchant banking or brokerage services from the subject company in the past twelve months PL or its associates might have received any compensation or other benefits from the subject company or third party in connection with the research report.

PL encourages independence in research report preparation and strives to minimize conflict in preparation of research report. PL or its analysts did not receive any compensation or other benefits from the subject Company or third party in connection with the preparation of the research report. PL or its Research Analysts do not have any material conflict of interest at the time of publication of this report.

It is confirmed that Mrs. Vaishali Parekh B.com, Research Analyst of this report has not received any compensation from the companies mentioned in the report in the preceding twelve months compensation of our Research Analysts is not based on any specific merchant banking, investment banking or brokerage service transactions.

The Research analysts for this report certifies that all of the views expressed in this report accurately reflect his or her personal views about the subject company or companies and its or their securities, and no part of his or her compensation was, is or will be, directly or indirectly related to specific recommendations or views expressed in this report.

The research analysts for this report has not served as an officer, director or employee of the subject company PL or its research analysts have not engaged in market making activity for the subject company

Our sales people, traders, and other professionals or affiliates may provide oral or written market commentary or trading strategies to our clients that reflect opinions that are contrary to the opinions expressed herein, and our proprietary trading and investing businesses may make investment decisions that are inconsistent with the recommendations expressed herein. In reviewing these materials, you should be aware that any or all of the foregoing, among other things, may give rise to real or potential conflicts of interest.

PL and its associates, their directors and employees may (a) from time to time, have a long or short position in, and buy or sell the securities of the subject company or (b) be engaged in any other transaction involving such securities and earn brokerage or other compensation or act as a market maker in the financial instruments of the subject company or act as an advisor or lender/borrower to the subject company or may have any other potential conflict of interests with respect to any recommendation and other related information and opinions.

Regd. Office: 3rd Floor, Sadhana House, 570, P. B. Marg, Behind Mahindra Tower, Worli, Mumbai - 400 018, India.