

* Sensex 74608.98 +49.74

* Nifty 23412.60 +33.05

* Bank Nifty 53456.15 -99.05

Market Preview

Nifty ends near the 23400 zone

Nifty witnessed some recovery after the weak opening session but again fizzled out in the second half with bias and sentiment maintained with a cautious approach. BankNifty witnessing some fluctuations is precariously placed closing near the crucial support zone of 53500 level. The market breadth was positive with the advance decline indicating a ratio of 3:2 at close.

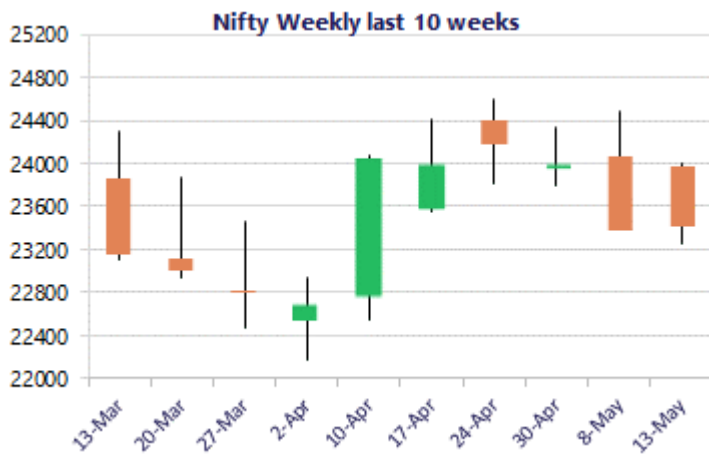
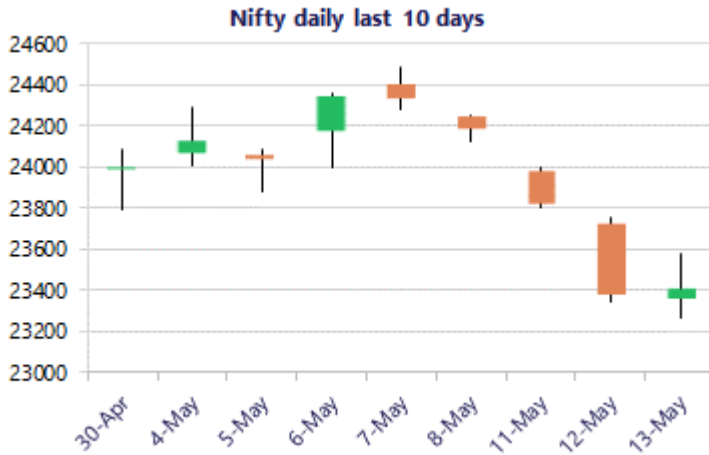
Market Forecast

Nifty daily range 23200 - 23600

Nifty witnessed a slightly volatile session finding resistance near the 23600 zone and slipped down to end on a flat note with bias and sentiment precariously placed with the index hovering near the weak zone below the 23800 levels. As mentioned earlier, the index breaching below the 23000 zone can trigger for intensified selling pressure in the coming days and on the downside, the levels of 22600 and 22200 levels would be wide open.

BankNifty witnessed a rangebound volatile session failing to move past the 54000 zone during the intraday session and with profit booking slipped down to end near the 53450 level with bias and sentiment maintained with a very cautious approach. The index is hovering near the crucial support zone of 53500 level failing which, it can trigger for downside targets of 51800 and the 50000 levels in the coming days.

The support for the day is seen at 23200 levels, while the resistance is seen at 23600 levels. BankNifty would have the daily range of 52500-54500 levels.



*Blue candle → Close rate > Open rate * Red candle → Close rate < Open rate

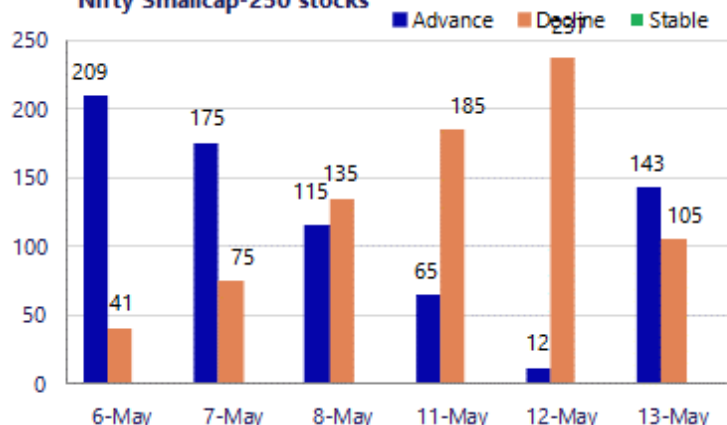
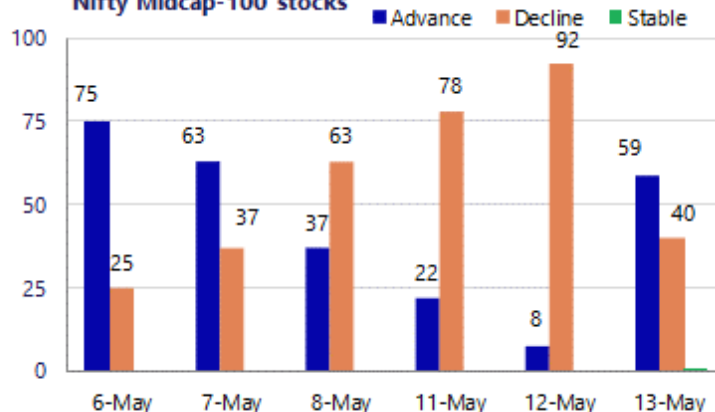
Sensex	Period	Closing	% Chng	Trend	Reversal	2 Sup	1 Sup	Pivot	1 Res	2 Res
Nifty	Daily	23412.60	0.14%	-4	23857.90	23099	23256	23419	23576	23740
	Weekly	24176.15	0.74%	5	23398.25	23664	23920	24138	24394	24613
	Monthly	23997.55	7.46%	-4	26009.10	21175	22586	23594	25005	26013
Bank Nifty	Daily	53456.15	-0.18%	-3	54449.90	52675	53066	53585	53975	54494
	Weekly	55310.55	0.82%	5	54024.35	53347	54329	55204	56186	57061
	Monthly	54863.35	9.13%	-2	62653.00	46590	50727	54092	58228	61593
Sensex	Daily	74608.98	0.07%	-4	76095.50	73588	74098	74645	75156	75702
	Weekly	77328.19	0.54%	5	75063.20	75781	76555	77289	78062	78796
	Monthly	76913.50	6.90%	-4	83783.80	68121	72517	75942	80338	83763

Gainers - Losers (Nifty 500 Stocks)
Gainers

Company Name	Last Price	% Gain	Volume
Adani Green Ene	1366.7	4.49%	5391439
Asian Paints	2,617.60	4.47%	3514860
Berger Paints	507.7	4.02%	9314308
Adani Enterpris	2,498.00	3.86%	2036164
Biocon	417.60	3.76%	11443590
Acutaas Chem	2,827.80	3.12%	363331
BEML	1,848.80	3.12%	289186

Losers

Company Name	Last Price	% Loss	Volume
Birlasoft	318.70	-3.89%	2312410
Brigade Ent	694.95	-3.32%	347967
AFFLE 3I	1,533.50	-3.27%	557450
Aegis Vopak	197.18	-2.71%	567663
ABSL AMC	1,033.80	-2.02%	574634
Chalet Hotels	744	-2.00%	260704
Ashok Leyland	153.21	-1.76%	25940903

Nifty Smallcap-250 stocks

Nifty Midcap-100 stocks


Nifty Daily chart with RSI indicator



BankNifty Daily chart with RSI indicator



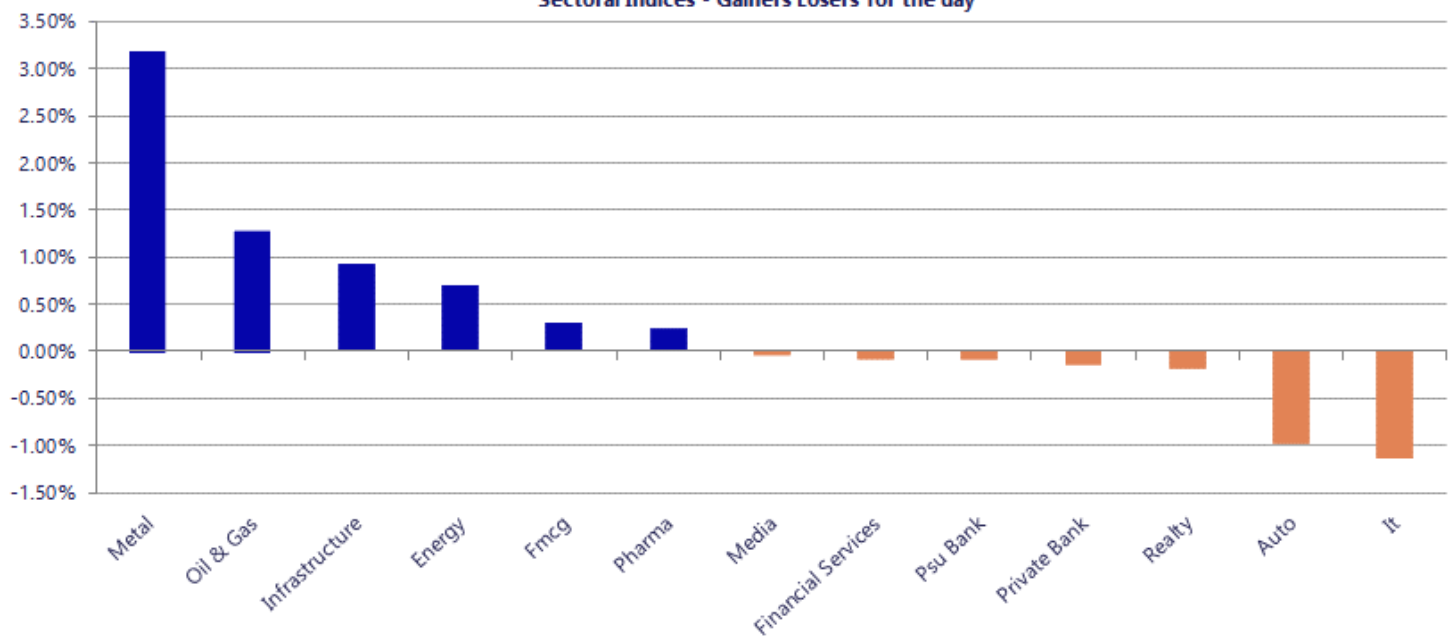
Breakouts - Cross above 200 DMA			
Company Name	LCP	Change %	200 DMA
Ritco Logistics	271.77	8.18	251.22
Cubex Tubings	103.49	8.11	95.73
Jayant Agro-Org	222.69	5.75	210.58
Foseco India	5442	5.29	5168.63
Nitco	102.13	3.93	98.27
Premier Explo	542	3.81	522.13
Asian Paints	2617.6	3.67	2524.86
KIOCL	396.45	3.67	382.41
Vardhman Steels	276	3.23	267.37
Geojit Fin	72.94	2.91	70.88
Industrial Inv	167.52	2.54	163.37
J G Chemicals	410.3	2.52	400.2
Creative New	674	2.40	658.18
Panacea Biotec	391.25	2.30	382.44
BALMLAWRIE	195.44	2.21	191.22
Mold-Tek Pack	664	2.19	649.76
Guj Themis	377.5	1.97	370.2
GMR Airports	96.87	1.96	95.01

* Stocks crossing above its Simple Moving Average (200DMA)

Breakdown - Cross below 200 DMA			
Company Name	LCP	Change %	200 DMA
Albert David	716.8	-6.13	763.63
PVP Ventures	28.05	-4.88	29.49
Arrow Greentech	511.05	-4.51	535.2
Vineet Lab	34.65	-3.99	36.09
Take Solutions	28.35	-3.77	29.46
SHUBHLAXMI	21.55	-3.75	22.39
Landmark Prop	7.03	-3.30	7.27
Lotus Eye Care	108.39	-2.75	111.45
Mask Investment	150	-2.73	154.21
Manorama Indust	1343.6	-2.52	1378.34
Agarwal Toughen	121.2	-2.38	124.16
Max Financial	1597.9	-2.34	1636.24
Kalpataru	346.1	-2.26	354.1
Orchid Pharma	695.55	-1.52	706.27
Plastiblends	165.73	-1.16	167.67
Ganga Bath Fitt	23.05	-1.07	23.3
Borosil Renew	540.9	-0.96	546.13
SRG Housing Fin	282.1	-0.89	284.62

* Stocks crossing below its Simple Moving Average (200DMA)

Sectoral Indices - Gainers Losers for the day



Nifty 50 Stocks - Summary Details											
Symbol	LTP	Chng	% Chng	Volume (lacs)	Turnover (crs.)	52w High	Diff with 52w H	52w Low	Diff with 52w L	365 days % chng	30 days % chng
NIFTY 50	23412.60	33.05	0.14%	4152.91	33688	26373	11.23%	22183	5.55%	-1.80%	-4.74%
ADANIENT	2503.00	97.80	4.07%	20.36	505	2617	4.34%	1753	42.78%	17.57%	5.61%
ADANIPTS	1737.20	49.00	2.90%	30.18	522	1792	3.06%	1291	34.61%	18.56%	26.88%
APOLLOHOSP	8040.00	17.50	0.22%	3.29	265	8144	1.28%	6697	20.06%	6.96%	16.23%
ASIANPAINT	2615.00	109.50	4.37%	35.15	918	2986	12.42%	2115	23.64%	11.16%	12.49%
AXISBANK	1255.20	-4.90	-0.39%	60.45	763	1418	11.50%	1043	20.40%	-7.27%	5.16%
BAJAJ-AUTO	10285.00	-112.00	-1.08%	3.68	379	10785	4.64%	7778	32.23%	4.78%	27.56%
BAJAJFINSV	1727.00	-17.80	-1.02%	6.66	116	2195	21.32%	1597	8.14%	-3.43%	-14.43%
BAJFINANCE	898.60	-5.60	-0.62%	74.23	668	1103	18.49%	788	14.05%	-0.04%	-0.62%
BEL	429.00	12.50	3.00%	132.30	563	473	9.39%	316	35.67%	-2.84%	27.77%
BHARTIARTL	1781.20	24.40	1.39%	98.24	1750	2175	18.09%	1741	2.34%	-4.79%	-2.16%
CIPLA	1329.80	37.50	2.90%	60.14	795	1673	20.51%	1166	14.08%	9.80%	-12.52%
COALINDIA	459.95	-3.10	-0.67%	120.85	563	491	6.37%	369	24.77%	5.71%	16.40%
DRREDDY	1269.90	-0.10	-0.01%	92.76	1177	1380	7.96%	1144	11.01%	2.75%	5.20%
EICHERMOT	6972.00	-154.00	-2.16%	6.68	466	8230	15.29%	5220	33.58%	-1.11%	28.66%
ETERNAL	238.13	-1.85	-0.77%	316.13	756	368	35.37%	213	12.01%	0.81%	2.80%
GRASIM	2948.90	45.90	1.58%	13.33	392	3007	1.94%	2503	17.84%	8.70%	8.87%
HCLTECH	1145.00	-0.80	-0.07%	26.34	302	1780	35.68%	1137	0.69%	-19.90%	-29.30%
HDFCBANK	749.15	-1.30	-0.17%	289.54	2180	1021	26.59%	727	3.10%	-5.73%	-22.07%
HDFCLIFE	604.15	2.35	0.39%	22.89	138	821	26.39%	555	8.84%	-2.41%	-17.81%
HINDALCO	1079.00	37.60	3.61%	53.41	571	1082	0.31%	618	74.60%	10.30%	69.99%
HINDUNILVR	2274.40	12.40	0.55%	13.08	297	2750	17.29%	2023	12.45%	6.92%	-3.63%
ICICIBANK	1236.10	-4.20	-0.34%	194.84	2414	1500	17.59%	1188	4.08%	-8.51%	-13.60%
INDIGO	4250.00	48.30	1.15%	10.19	432	6233	31.81%	3895	9.11%	-4.00%	-23.02%
INFY	1123.40	-16.90	-1.48%	66.62	752	1728	34.99%	1121	0.21%	-12.01%	-28.38%
ITC	304.80	4.10	1.36%	130.21	396	444	31.38%	287	6.20%	2.06%	-28.77%
JIOFIN	231.70	1.23	0.53%	137.00	318	339	31.57%	223	3.76%	-2.52%	-13.35%
JSWSTEEL	1276.70	24.40	1.95%	23.66	301	1307	2.30%	962	32.69%	6.02%	28.97%
KOTAKBANK	378.95	2.95	0.78%	162.67	619	453	16.38%	346	9.68%	1.90%	-10.44%
LT	3919.00	62.50	1.62%	24.86	970	4440	11.73%	3288	19.19%	-0.89%	9.87%
M&M	3127.00	-49.00	-1.54%	26.92	845	3840	18.57%	2896	7.98%	-2.89%	2.40%
MARUTI	13110.00	-62.00	-0.47%	3.07	402	17370	24.53%	12016	9.10%	0.26%	5.03%
MAXHEALTH	1028.00	10.30	1.01%	10.56	108	1314	21.78%	903	13.84%	8.02%	-12.29%
NESTLEIND	1467.00	-1.60	-0.11%	22.06	325	1498	2.08%	1085	35.24%	19.65%	23.79%
NTPC	390.85	-1.85	-0.47%	123.21	480	414	5.68%	316	23.86%	1.19%	14.45%
ONGC	297.35	2.85	0.97%	243.80	724	308	3.30%	229	30.07%	3.41%	23.30%
POWERGRID	302.80	-3.50	-1.14%	237.75	713	325	6.82%	250	21.12%	0.82%	1.46%
RELIANCE	1361.20	-2.80	-0.21%	137.97	1878	1612	15.55%	1290	5.52%	3.51%	-3.85%
SBILIFE	1844.20	10.30	0.56%	8.53	157	2132	13.50%	1720	7.22%	-3.67%	5.99%
SBIN	971.00	-3.60	-0.37%	175.83	1710	1235	21.36%	779	24.63%	-8.70%	21.11%
SHRIRAMFIN	920.90	-9.55	-1.03%	107.44	992	1108	16.89%	567	62.56%	-8.29%	45.34%
SUNPHARMA	1823.60	-22.10	-1.20%	19.72	362	1886	3.30%	1548	17.80%	10.37%	7.27%
TATACONSUM	1242.20	-10.80	-0.86%	24.12	301	1283	3.16%	1007	23.33%	13.93%	11.05%
TATASTEEL	219.90	7.90	3.73%	462.27	1007	221	0.46%	145	52.18%	6.55%	47.16%
TCS	2274.00	-26.30	-1.14%	31.70	725	3631	37.36%	2269	0.22%	-8.03%	-35.31%
TECHM	1375.00	-17.90	-1.29%	21.43	296	1854	25.84%	1304	5.44%	-4.21%	-12.56%
TITAN	4079.00	23.70	0.58%	28.41	1151	4605	11.42%	3303	23.49%	-8.12%	14.48%
TMPV	336.95	0.10	0.03%	56.91	193	744	54.71%	294	14.49%	-2.47%	-52.39%
TRENT	4094.80	44.20	1.09%	4.55	186	6261	34.60%	3276	25.01%	5.66%	-23.12%
ULTRACEMCO	11599.00	83.00	0.72%	4.53	523	13110	11.53%	10325	12.34%	0.84%	-0.53%
WIPRO	187.98	-1.59	-0.84%	172.36	325	273	31.17%	187	0.79%	-7.39%	-25.28%

Disclaimer / Disclosures

ANALYST CERTIFICATION

I, Mrs. Vaishali Parekh B.com, Research Analyst, author and the name subscribed to this report, hereby certify that all of the views expressed in this research report accurately reflect our views about the subject issuer(s) or securities. We also certify that no part of our compensation was, is, or will be directly or indirectly related to the specific recommendation(s) or view(s) in this report.

Terms & conditions and other disclosures:

Prabhudas Lilladher Pvt. Ltd, Mumbai, India (hereinafter referred to as "PL") is engaged in the business of Stock Broking, Portfolio Manager, Depository Participant and distribution for third party financial products. PL is a subsidiary of Prabhudas Lilladher Advisory Services Pvt Ltd. which has its various subsidiaries engaged in business of commodity broking, investment banking, financial services (margin funding) and distribution of third party financial/other products, details in respect of which are available at www.plindia.com

This document has been prepared by the Research Division of PL and is meant for use by the recipient only as information and is not for circulation. This document is not to be reported or copied or made available to others without prior permission of PL. It should not be considered or taken as an offer to sell or a solicitation to buy or sell any security.

The information contained in this report has been obtained from sources that are considered to be reliable. However, PL has not independently verified the accuracy or completeness of the same. Neither PL nor any of its affiliates, its directors or its employees accepts any responsibility of whatsoever nature for the information, statements and opinion given, made available or expressed herein or for any omission therein.

Recipients of this report should be aware that past performance is not necessarily a guide to future performance and value of investments can go down as well. The suitability or otherwise of any investments will depend upon the recipient's particular circumstances and, in case of doubt, advice should be sought from an independent expert/advisor.

Either PL or its affiliates or its directors or its employees or its representatives or its clients or their relatives may have position(s), make market, act as principal or engage in transactions of securities of companies referred to in this report and they may have used the research material prior to publication.

PL may from time to time solicit or perform investment banking or other services for any company mentioned in this document.

PL is registered as Research Analyst under Securities and Exchange Board of India (Research Analysts) Regulations, 2014 PL submits that no material disciplinary action has been taken on us by any Regulatory Authority impacting Equity Research Analysis activities.

PL or its research analysts or its associates or his relatives do not have any financial interest in the subject company.

PL or its research analysts or its associates or his relatives do not have actual/beneficial ownership of one per cent or more securities of the subject company at the end of the month immediately preceding the date of publication of the research report.

PL or its research analysts or its associates or his relatives do not have any material conflict of interest at the time of publication of the research report.

PL or its associates might have received compensation from the subject company in the past twelve months.

PL or its associates might have managed or co-managed public offering of securities for the subject company in the past twelve months or mandated by the subject company for any other assignment in the past twelve months.

PL or its associates might have received any compensation for investment banking or merchant banking or brokerage services from the subject company in the past twelve months.

PL or its associates might have received any compensation for products or services other than investment banking or merchant banking or brokerage services from the subject company in the past twelve months PL or its associates might have received any compensation or other benefits from the subject company or third party in connection with the research report.

PL encourages independence in research report preparation and strives to minimize conflict in preparation of research report. PL or its analysts did not receive any compensation or other benefits from the subject Company or third party in connection with the preparation of the research report. PL or its Research Analysts do not have any material conflict of interest at the time of publication of this report.

It is confirmed that Mrs. Vaishali Parekh B.com, Research Analyst of this report has not received any compensation from the companies mentioned in the report in the preceding twelve months compensation of our Research Analysts is not based on any specific merchant banking, investment banking or brokerage service transactions.

The Research analysts for this report certifies that all of the views expressed in this report accurately reflect his or her personal views about the subject company or companies and its or their securities, and no part of his or her compensation was, is or will be, directly or indirectly related to specific recommendations or views expressed in this report.

The research analysts for this report has not served as an officer, director or employee of the subject company PL or its research analysts have not engaged in market making activity for the subject company

Our sales people, traders, and other professionals or affiliates may provide oral or written market commentary or trading strategies to our clients that reflect opinions that are contrary to the opinions expressed herein, and our proprietary trading and investing businesses may make investment decisions that are inconsistent with the recommendations expressed herein. In reviewing these materials, you should be aware that any or all of the foregoing, among other things, may give rise to real or potential conflicts of interest.

PL and its associates, their directors and employees may (a) from time to time, have a long or short position in, and buy or sell the securities of the subject company or (b) be engaged in any other transaction involving such securities and earn brokerage or other compensation or act as a market maker in the financial instruments of the subject company or act as an advisor or lender/borrower to the subject company or may have any other potential conflict of interests with respect to any recommendation and other related information and opinions.

Regd. Office: 3rd Floor, Sadhana House, 570, P. B. Marg, Behind Mahindra Tower, Worli, Mumbai - 400 018, India.