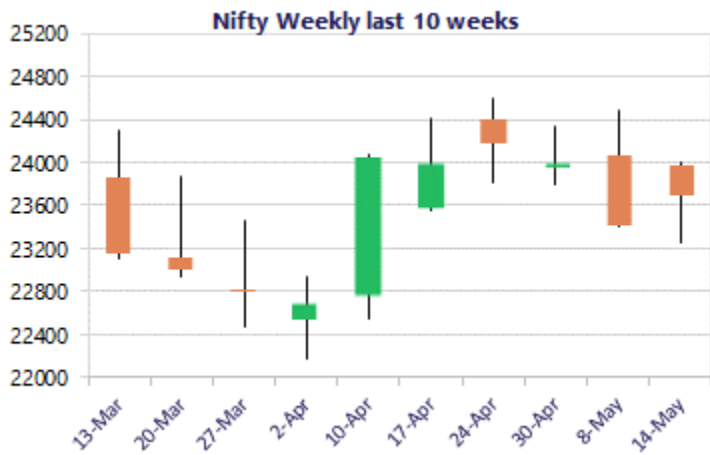
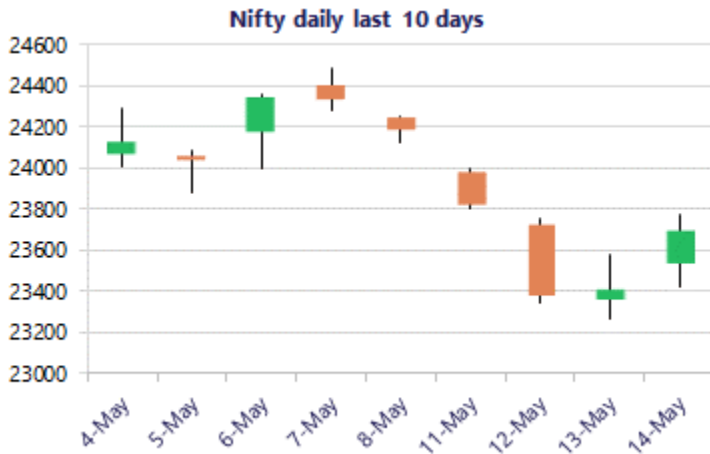


* Sensex 75398.72 + 789.74

* Nifty 23689.60 + 277.00

* Bank Nifty 54128.95 + 672.80



*Blue candle → Close rate > Open rate * Red candle → Close rate < Open rate

Market Preview

Nifty witnesses relief rally

Nifty witnessed a bounce back, easing out the overall market bias to some extent. Further gains are expected in the coming days. Bank Nifty also staged a bounce, forming a bullish candle, which indicates potential for further upside in upcoming sessions as the trend improves. The market breadth was overall flat, with the advance-decline ratio indicating a neutral position at close.

Market Forecast

Nifty daily range: 23500 - 23900

Nifty witnessed a bounce back from the 23250 zone with a bullish candle pattern on the daily chart to indicate an optimistic closing near the 23700 level to ease the sentiment and to anticipate a further rise in the coming days. The index would have the important support near the 23000-23200 band, which needs to be sustained, and on the upside, with the undertone going strong & a decisive close above 23800, one can expect a rally towards the 50 EMA level of 24100 in the coming days.

BankNifty indicated a strong bullish candle formation on the daily chart after a 4-session downward move with a DOJI in the last session to witness a rally above 54000. The index would have the near-term support positioned near the 53000 zone, which needs to be sustained, and on the upside, it can expect a target of 55700 - 56000 in the coming days.

The support for the day is seen at 23500 levels, while the resistance is seen at 23900 levels. BankNifty would have the daily range of 53500-56000 levels.

Sensex	Period	Closing	% Chng	Trend	Reversal	2 Sup	1 Sup	Pivot	1 Res	2 Res
Nifty	Daily	23689.60	1.18%	-5	23805.80	23280	23485	23631	23836	23982
	Weekly	24176.15	0.74%	5	23398.25	23664	23920	24138	24394	24613
	Monthly	23997.55	7.46%	-4	26009.10	21175	22586	23594	25005	26013
Bank Nifty	Daily	54128.95	1.26%	-4	54426.95	52703	53416	53905	54618	55107
	Weekly	55310.55	0.82%	5	54024.35	53347	54329	55204	56186	57061
	Monthly	54863.35	9.13%	-2	62653.00	46590	50727	54092	58228	61593
Sensex	Daily	75398.72	1.06%	-5	75882.20	74047	74723	75202	75878	76358
	Weekly	77328.19	0.54%	5	75063.20	75781	76555	77289	78062	78796
	Monthly	76913.50	6.90%	-4	83783.80	68121	72517	75942	80338	83763

Gainers - Losers (Nifty 500 Stocks)

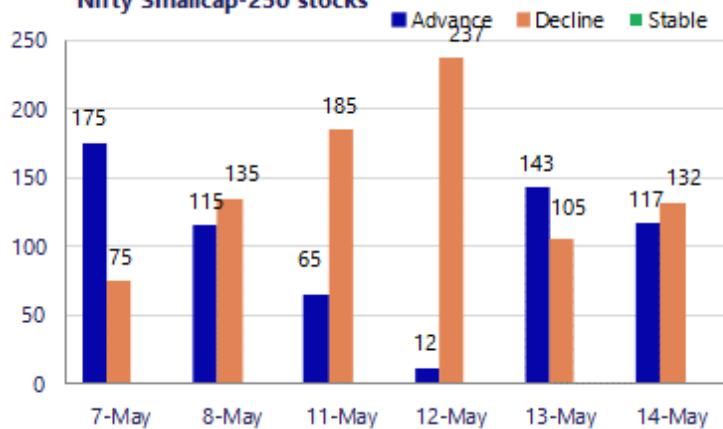
Gainers

Company Name	Last Price	% Gain	Volume
Adani Enterpris	2712.9	8.60%	9539233
Authum Invest	505.60	5.66%	633860
Bharti Airtel	1883.5	5.27%	21279151
Berger Paints	533.90	5.16%	4289866
Adani Power	224.49	4.97%	41896940
Ajanta Pharma	3,259.20	4.35%	328089
Balkrishna Ind	2,191.10	4.09%	124061

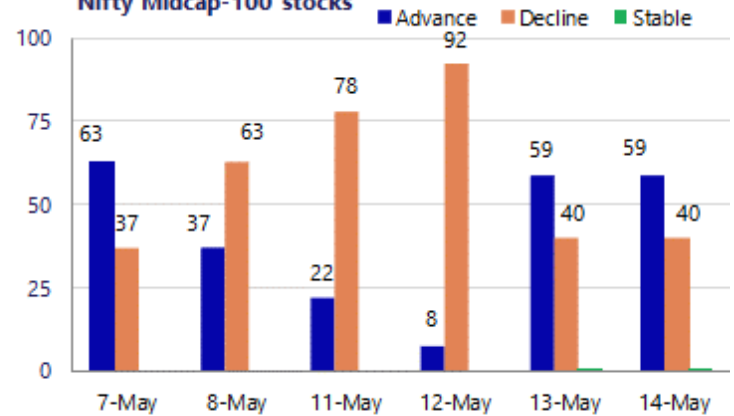
Losers

Company Name	Last Price	% Loss	Volume
Acutaas Chem	2,726.80	-3.57%	658946
CarTrade Tech	1836.4	-2.75%	313775
Brainbees Solu	230.00	-2.56%	700921
AFFLE 3I	1,494.60	-2.54%	339257
Aadhar Housing	474.80	-2.47%	189939
Birlasoft	310.9	-2.45%	1385633
BLS Internation	260.45	-2.33%	1314155

Nifty Smallcap-250 stocks



Nifty Midcap-100 stocks



Nifty Daily chart with RSI indicator



BankNifty Daily chart with RSI indicator



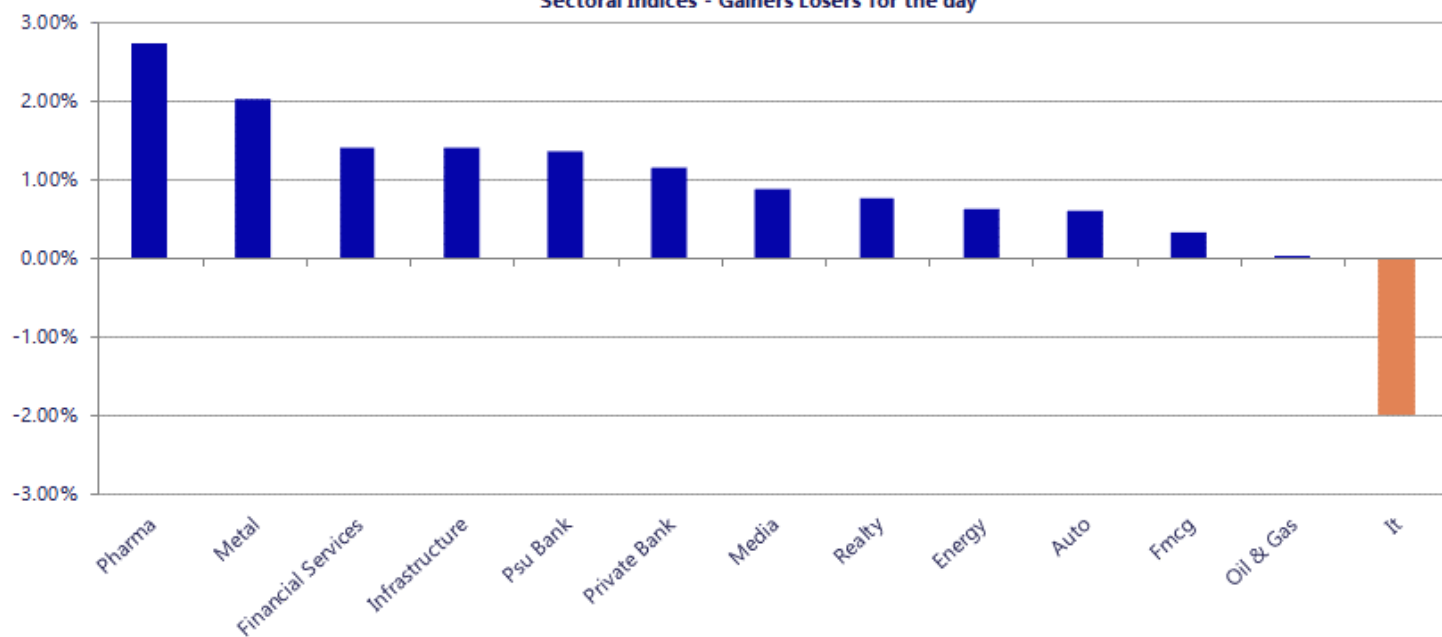
Breakouts - Cross above 200 DMA			
Company Name	LCP	Change %	200 DMA
Raghav Producti	821.55	8.85	754.78
Sanofi Consumer	5026.8	8.06	4651.65
Caplin Labs	2023.8	6.30	1903.84
Zydus Life	991.7	5.25	942.27
Easy Trip	8.27	4.55	7.91
Berger Paints	533.9	4.41	511.34
Future Market	10.53	3.85	10.14
Noida Toll	4.17	3.73	4.02
Styrenix	2326.4	3.51	2247.58
Greenchef	58.55	3.32	56.67
Ginni Filaments	43.55	3.10	42.24
Nagreeka Export	27.56	2.99	26.76
Bhansali Eng	97.12	2.51	94.74
Carysil	912.35	2.50	890.14
Indo Amines	128.06	2.25	125.24
Indian Bank	831.75	2.15	814.21
SKM Egg Product	182.35	1.96	178.84
Orchid Pharma	719.25	1.87	706.08

* Stocks crossing above its Simple Moving Average (200DMA)

Breakdown - Cross below 200 DMA			
Company Name	LCP	Change %	200 DMA
Systango Tech	236.9	-12.29	270.1
Jeena Sikho	656.75	-4.92	690.75
BLAL	191.62	-4.16	199.93
Pratham EPC Pro	136.35	-4.12	142.21
Salzer Electro	683.35	-4.08	712.41
Sungarner	210	-4.02	218.79
Foseco India	4978.8	-3.71	5170.74
Securecloud Tec	22.46	-2.60	23.06
Balaji Telefilm	101.56	-2.54	104.21
MIC Electronics	45.69	-2.16	46.7
Unimech Aerospa	950.2	-1.70	966.68
TVS Motor	3460.8	-1.70	3520.66
DCG Cables & Wi	64.75	-1.70	65.87
Kamdhenu	24.81	-1.66	25.23
New India Assur	164.84	-1.62	167.55
TVS Srichakra	3719.4	-1.46	3774.43
Piramal Pharma	174.56	-1.21	176.69
Electrosteel	83.82	-0.96	84.63

* Stocks crossing below its Simple Moving Average (200DMA)

Sectoral Indices - Gainers Losers for the day



Nifty 50 Stocks - Summary Details											
Symbol	LTP	Chng	% Chng	Volume (lacs)	Turnover (crs.)	52w High	Diff with 52w H	52w Low	Diff with 52w L	365 days % chng	30 days % chng
NIFTY 50	23689.60	277.00	1.18%	4287.35	38828	26373	10.18%	22183	6.79%	-0.64%	-3.96%
ADANIEN	2719.00	221.00	8.85%	95.39	2524	2720	0.04%	1753	55.11%	27.71%	13.76%
ADANIPTS	1781.00	43.20	2.49%	30.51	538	1792	0.61%	1291	38.01%	21.55%	29.83%
APOLLOHOSP	8115.00	110.50	1.38%	4.31	351	8180	0.79%	6697	21.18%	7.96%	17.33%
ASIANPAINT	2614.00	-3.60	-0.14%	10.41	274	2986	12.45%	2115	23.59%	11.12%	14.53%
AXISBANK	1255.10	-0.60	-0.05%	58.23	730	1418	11.51%	1043	20.39%	-7.28%	4.99%
BAJAJ-AUTO	10447.00	185.00	1.80%	4.26	443	10785	3.13%	7859	32.94%	6.43%	28.94%
BAJAJFINSV	1740.00	11.10	0.64%	20.86	361	2195	20.73%	1597	8.95%	-2.70%	-13.88%
BAJFINANCE	915.00	18.85	2.10%	68.15	617	1103	17.01%	788	16.13%	1.79%	0.76%
BEL	429.00	0.75	0.18%	98.08	421	473	9.39%	323	32.90%	-2.84%	24.58%
BHARTIARTL	1883.00	93.80	5.24%	212.79	3939	2175	13.41%	1741	8.19%	0.65%	2.66%
CIPLA	1435.00	107.40	8.09%	91.67	1302	1673	14.23%	1166	23.10%	18.49%	-4.00%
COALINDIA	456.85	-5.40	-1.17%	114.09	527	491	7.00%	369	23.93%	5.00%	13.33%
DRREDDY	1301.20	35.90	2.84%	23.63	305	1380	5.69%	1148	13.31%	5.28%	6.66%
EICHERMOT	7040.50	69.00	0.99%	4.48	313	8230	14.45%	5220	34.89%	-0.13%	29.27%
ETERNAL	245.39	7.57	3.18%	299.74	727	368	33.40%	213	15.42%	3.88%	3.60%
GRASIM	2945.40	-0.20	-0.01%	16.53	488	3007	2.06%	2503	17.70%	8.57%	7.61%
HCLTECH	1123.90	-19.30	-1.69%	58.37	654	1780	36.86%	1103	1.86%	-21.37%	-31.37%
HDFCBANK	770.10	20.50	2.73%	509.92	3912	1021	24.54%	727	5.98%	-3.10%	-19.39%
HDFCLIFE	610.00	7.20	1.19%	31.20	190	821	25.68%	555	9.89%	-1.47%	-17.76%
HINDALCO	1104.00	30.90	2.88%	49.21	540	1105	0.09%	618	78.64%	12.85%	69.70%
HINDUNILVR	2249.60	-17.70	-0.78%	13.81	312	2750	18.20%	2023	11.23%	5.75%	-4.29%
ICICIBANK	1248.70	13.10	1.06%	165.36	2064	1500	16.75%	1188	5.14%	-7.58%	-12.45%
INDIGO	4293.00	37.20	0.87%	7.44	318	6233	31.12%	3895	10.21%	-3.03%	-21.25%
INFY	1094.10	-29.00	-2.58%	169.15	1858	1728	36.68%	1089	0.47%	-14.31%	-31.29%
ITC	307.20	2.75	0.90%	111.13	342	444	30.84%	287	7.04%	2.86%	-28.41%
JIOFIN	234.88	3.43	1.48%	165.46	384	339	30.63%	223	5.19%	-1.18%	-12.19%
JSWSTEEL	1298.50	23.60	1.85%	32.93	427	1307	0.64%	962	34.96%	7.83%	31.25%
KOTAKBANK	383.50	5.85	1.55%	106.53	407	453	15.38%	346	11.00%	3.12%	-8.36%
LT	3934.00	18.20	0.46%	29.82	1179	4440	11.40%	3288	19.64%	-0.51%	10.10%
M&M	3176.00	64.20	2.06%	21.68	682	3840	17.29%	2896	9.67%	-1.37%	2.39%
MARUTI	13100.00	-3.00	-0.02%	2.87	374	17370	24.58%	12016	9.02%	0.18%	3.39%
MAXHEALTH	1050.60	24.50	2.39%	18.22	191	1314	20.06%	903	16.35%	10.39%	-10.71%
NESTLEIND	1457.60	-11.30	-0.77%	12.52	183	1498	2.70%	1085	34.38%	18.88%	22.98%
NTPC	396.00	5.55	1.42%	73.64	292	414	4.44%	316	25.50%	2.52%	16.97%
ONGC	300.90	3.75	1.26%	226.60	684	308	2.15%	229	31.62%	4.64%	22.31%
POWERGRID	302.90	1.40	0.46%	140.13	424	325	6.79%	250	21.16%	0.85%	2.35%
RELIANCE	1368.50	9.70	0.71%	173.03	2363	1612	15.09%	1290	6.09%	4.06%	-3.92%
SBILIFE	1870.00	32.50	1.77%	7.65	142	2132	12.29%	1720	8.72%	-2.32%	6.54%
SBIN	982.30	12.20	1.26%	164.87	1612	1235	20.44%	779	26.08%	-7.64%	22.68%
SHRIRAMFIN	937.10	16.55	1.80%	92.20	852	1108	15.42%	567	65.42%	-6.67%	43.74%
SUNPHARMA	1862.90	38.10	2.09%	24.29	451	1886	1.21%	1548	20.34%	12.75%	9.06%
TATACONSUM	1226.50	-8.50	-0.69%	13.91	172	1283	4.38%	1007	21.77%	12.49%	9.47%
TATASTEEL	220.65	1.03	0.47%	349.85	775	223	1.01%	149	48.08%	6.91%	42.07%
TCS	2249.90	-22.90	-1.01%	56.33	1260	3623	37.90%	2206	1.97%	-9.01%	-36.60%
TECHM	1343.00	-32.00	-2.33%	23.37	314	1854	27.56%	1304	2.98%	-6.44%	-16.23%
TITAN	4144.80	54.10	1.32%	11.27	463	4605	9.99%	3303	25.48%	-6.63%	15.53%
TMPV	338.00	1.15	0.34%	79.75	269	744	54.57%	294	14.85%	-2.17%	-51.64%
TRENT	4131.00	46.50	1.14%	6.71	277	6261	34.02%	3276	26.12%	6.60%	-22.96%
ULTRACEMCO	11725.00	152.00	1.31%	2.20	257	13110	10.56%	10325	13.56%	1.94%	0.45%
WIPRO	188.10	0.30	0.16%	182.80	344	273	31.12%	187	0.86%	-7.33%	-25.63%

Disclaimer / Disclosures

ANALYST CERTIFICATION

I, Mrs. Vaishali Parekh B.com, Research Analyst, author and the name subscribed to this report, hereby certify that all of the views expressed in this research report accurately reflect our views about the subject issuer(s) or securities. We also certify that no part of our compensation was, is, or will be directly or indirectly related to the specific recommendation(s) or view(s) in this report.

Terms & conditions and other disclosures:

Prabhudas Lilladher Pvt. Ltd, Mumbai, India (hereinafter referred to as "PL") is engaged in the business of Stock Broking, Portfolio Manager, Depository Participant and distribution for third party financial products. PL is a subsidiary of Prabhudas Lilladher Advisory Services Pvt Ltd. which has its various subsidiaries engaged in business of commodity broking, investment banking, financial services (margin funding) and distribution of third party financial/other products, details in respect of which are available at www.plindia.com

This document has been prepared by the Research Division of PL and is meant for use by the recipient only as information and is not for circulation. This document is not to be reported or copied or made available to others without prior permission of PL. It should not be considered or taken as an offer to sell or a solicitation to buy or sell any security.

The information contained in this report has been obtained from sources that are considered to be reliable. However, PL has not independently verified the accuracy or completeness of the same. Neither PL nor any of its affiliates, its directors or its employees accepts any responsibility of whatsoever nature for the information, statements and opinion given, made available or expressed herein or for any omission therein.

Recipients of this report should be aware that past performance is not necessarily a guide to future performance and value of investments can go down as well. The suitability or otherwise of any investments will depend upon the recipient's particular circumstances and, in case of doubt, advice should be sought from an independent expert/advisor.

Either PL or its affiliates or its directors or its employees or its representatives or its clients or their relatives may have position(s), make market, act as principal or engage in transactions of securities of companies referred to in this report and they may have used the research material prior to publication.

PL may from time to time solicit or perform investment banking or other services for any company mentioned in this document.

PL is registered as Research Analyst under Securities and Exchange Board of India (Research Analysts) Regulations, 2014 PL submits that no material disciplinary action has been taken on us by any Regulatory Authority impacting Equity Research Analysis activities.

PL or its research analysts or its associates or his relatives do not have any financial interest in the subject company.

PL or its research analysts or its associates or his relatives do not have actual/beneficial ownership of one per cent or more securities of the subject company at the end of the month immediately preceding the date of publication of the research report.

PL or its research analysts or its associates or his relatives do not have any material conflict of interest at the time of publication of the research report.

PL or its associates might have received compensation from the subject company in the past twelve months.

PL or its associates might have managed or co-managed public offering of securities for the subject company in the past twelve months or mandated by the subject company for any other assignment in the past twelve months.

PL or its associates might have received any compensation for investment banking or merchant banking or brokerage services from the subject company in the past twelve months.

PL or its associates might have received any compensation for products or services other than investment banking or merchant banking or brokerage services from the subject company in the past twelve months PL or its associates might have received any compensation or other benefits from the subject company or third party in connection with the research report.

PL encourages independence in research report preparation and strives to minimize conflict in preparation of research report. PL or its analysts did not receive any compensation or other benefits from the subject Company or third party in connection with the preparation of the research report. PL or its Research Analysts do not have any material conflict of interest at the time of publication of this report.

It is confirmed that Mrs. Vaishali Parekh B.com, Research Analyst of this report has not received any compensation from the companies mentioned in the report in the preceding twelve months compensation of our Research Analysts is not based on any specific merchant banking, investment banking or brokerage service transactions.

The Research analysts for this report certifies that all of the views expressed in this report accurately reflect his or her personal views about the subject company or companies and its or their securities, and no part of his or her compensation was, is or will be, directly or indirectly related to specific recommendations or views expressed in this report.

The research analysts for this report has not served as an officer, director or employee of the subject company PL or its research analysts have not engaged in market making activity for the subject company

Our sales people, traders, and other professionals or affiliates may provide oral or written market commentary or trading strategies to our clients that reflect opinions that are contrary to the opinions expressed herein, and our proprietary trading and investing businesses may make investment decisions that are inconsistent with the recommendations expressed herein. In reviewing these materials, you should be aware that any or all of the foregoing, among other things, may give rise to real or potential conflicts of interest.

PL and its associates, their directors and employees may (a) from time to time, have a long or short position in, and buy or sell the securities of the subject company or (b) be engaged in any other transaction involving such securities and earn brokerage or other compensation or act as a market maker in the financial instruments of the subject company or act as an advisor or lender/borrower to the subject company or may have any other potential conflict of interests with respect to any recommendation and other related information and opinions.

Regd. Office: 3rd Floor, Sadhana House, 570, P. B. Marg, Behind Mahindra Tower, Worli, Mumbai - 400 018, India.