

\* Sensex 75237.99 -160.73

\* Nifty 23643.50 -46.10

\* Bank Nifty 53710.35 -418.60

## Market Preview

### Nifty resists near the 23800 zone

Nifty once again witnessed resistance near the 23800 zone and slipped down with profit booking seen with the bias and sentiment still maintained with a cautious approach. BankNifty witnessed profit booking near the 54300 zone and closed in the red near the 53700 level with consolidation seen since the last 3-4 sessions. The market breadth was weak with the advance decline indicating a ratio of 1:2 at close.

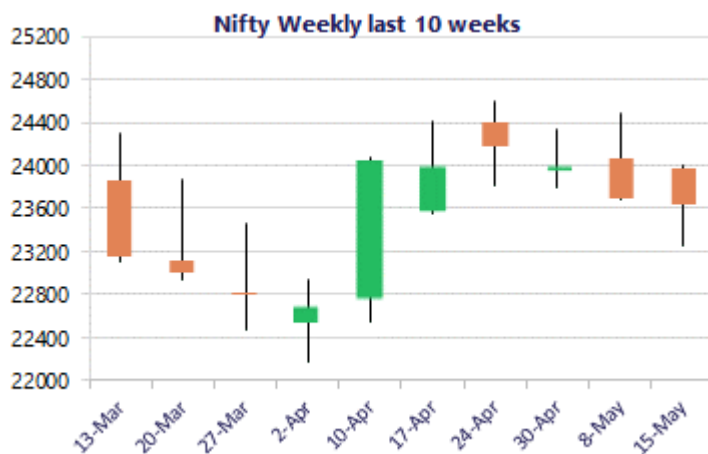
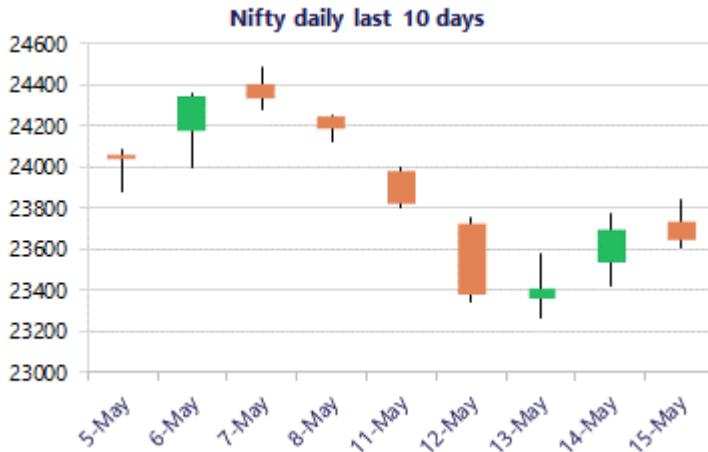
## Market Forecast

### Nifty daily range 23400 - 23800

Nifty witnessed a volatile session finding resistance near the 23850-zone slipped down in the second half to end near the 23600 zone with bias and sentiment maintained with a cautious approach with uncertainties looming around. As mentioned earlier, the index would have the near-term support around 23200 zone which needs to be sustained to maintain the overall bias intact whereas on the upside, the 24300 band shall be the tough resistance hurdle which needs to be breached decisively to establish conviction and clarity.

BankNifty witnessed tough resistance near the 54300 level and failing to move past the zone, slipped down with profit booking seen in the final hours to close near the 53700 level with the 53500 zone positioned as the important and crucial support zone as of now. The index is finding consolidation and would need a significant revival to move past the 50EMA zone at 55600 level to improve the bias and establish conviction for further upward move in the coming days. On the downside, a decisive breach below 53500 zone, shall trigger for fresh downside targets of 51800 and the 50000 levels in the coming days.

The support for the day is seen at 23400 levels, while the resistance is seen at 23800 levels. BankNifty would have the daily range of 53000-54400 levels.



\*Blue candle → Close rate > Open rate \* Red candle → Close rate < Open rate

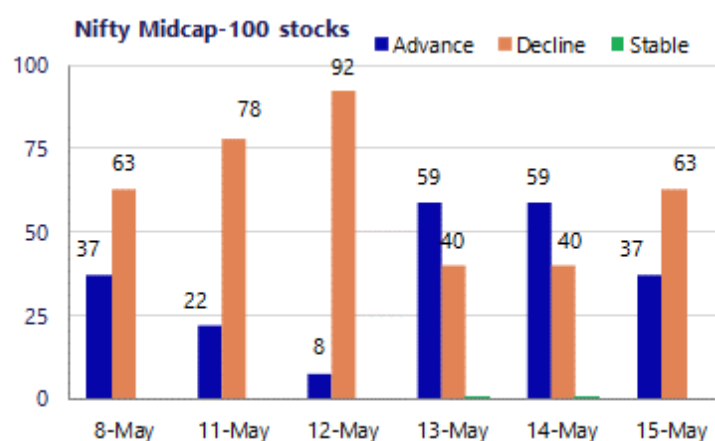
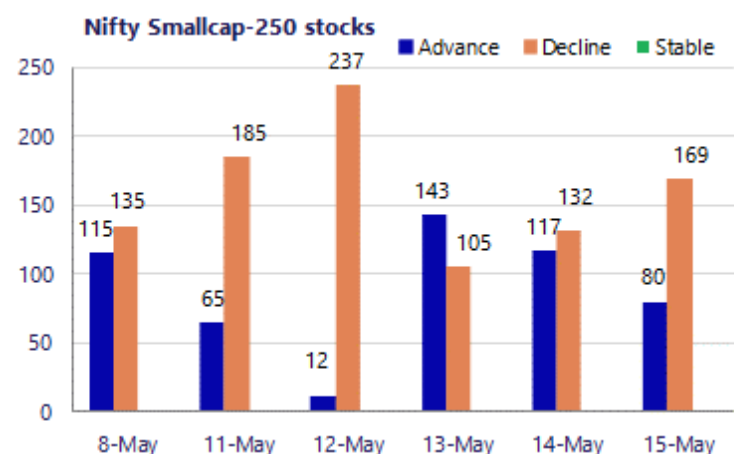
Sensex	Period	Closing	% Chng	Trend	Reversal	2 Sup	1 Sup	Pivot	1 Res	2 Res
	Daily	23643.50	-0.19%	-6	23712.70	23469	23556	23698	23785	23927
Nifty	Weekly	23643.50	-2.20%	6	23661.60	22900	23272	23635	24006	24369
	Monthly	23997.55	7.46%	-4	26009.10	21175	22586	23594	25005	26013
Bank Nifty	Daily	53710.35	-0.77%	-5	54076.35	53191	53451	53888	54148	54585
	Weekly	53710.35	-2.89%	-1	54330.15	52157	52934	53968	54745	55779
	Monthly	54863.35	9.13%	-2	62653.00	46590	50727	54092	58228	61593
Sensex	Daily	75237.99	-0.21%	-6	75533.60	74685	74961	75416	75692	76147
	Weekly	75237.99	-2.70%	6	75620.00	72806	74022	75350	76566	77894
	Monthly	76913.50	6.90%	-4	83783.80	68121	72517	75942	80338	83763

**Gainers - Losers ( Nifty 500 Stocks )**
**Gainers**

Company Name	Last Price	% Gain	Volume
Carborundum	1102.4	6.27%	1001
Chambal Fert	449.90	5.96%	436.4
CG Consumer	301.95	4.50%	289
Chalet Hotels	784.65	4.24%	755
Bharti Hexacom	1,562.30	3.48%	1515
Aegis Logistics	674.15	3.15%	659
Bikaji Foods	669.05	2.96%	654

**Losers**

Company Name	Last Price	% Loss	Volume
Clean Science	766.65	-6.28%	822
Cohance Life	423.2	-4.94%	449.8
Anthem Bioscien	783.30	-4.49%	821.65
BHEL	398.30	-3.59%	414.8
BPCL	284.45	-3.58%	293
ABSL AMC	1030.4	-3.54%	1068.2
Data Patterns	3876.5	-3.34%	4010.5



### Nifty Daily chart with RSI indicator



### BankNifty Daily chart with RSI indicator



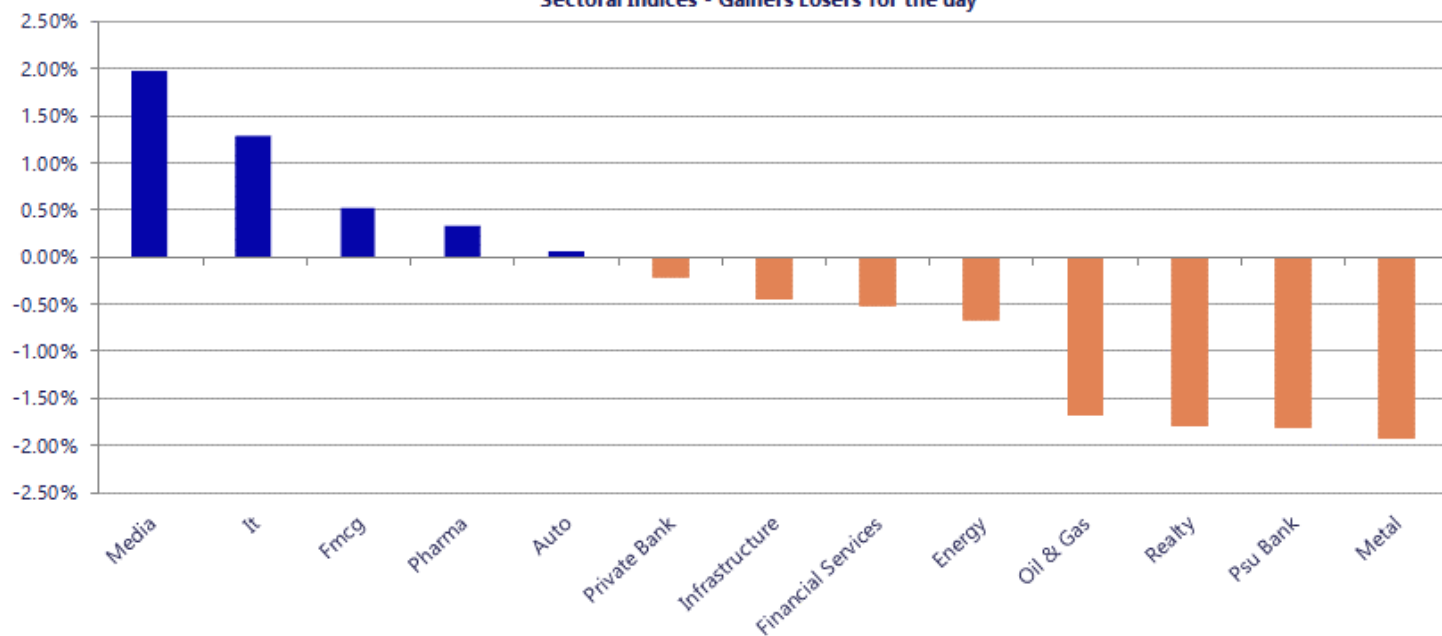
Breakouts - Cross above 200 DMA			
Company Name	LCP	Change %	200 DMA
Remus Pharmaceu	865.25	17.29	737.73
Nazara	299.95	10.37	271.77
Shiva Texyarn	184.16	6.42	173.05
Rane Holdings	1438.1	5.49	1363.25
Saregama India	415.75	4.80	396.7
Gandhar Oil	149.98	4.65	143.31
SOLARA ACTIVE P	579.9	4.55	554.66
Vishwas Agri	54.95	3.25	53.22
HYBRIDFIN	19.52	3.17	18.92
Valiant Organic	296.6	2.93	288.15
Team India	269.7	2.82	262.3
United Polyfab	33.75	2.43	32.95
Global Health	1242.5	2.24	1215.3
SKP Bearing	193.15	1.42	190.45
Bigbloc Constru	57.29	1.38	56.51
Tube Investment	2850.3	1.16	2817.75
Vishnusurya Pro	168.55	0.91	167.03
Rainbow Childre	1336.2	0.90	1324.32

\* Stocks crossing above its Simple Moving Average (200DMA)

Breakdown - Cross below 200 DMA			
Company Name	LCP	Change %	200 DMA
Texmaco Rail	116.23	-6.96	124.93
IFB Agro	967.7	-6.96	1040.06
Jai Balaji Ind	76.58	-5.64	81.16
Dilip Buildcon	441.5	-5.50	467.18
P N Gadgil	573.9	-5.22	605.49
Esprit Stones	73	-3.26	75.46
Creative New	636.95	-3.24	658.28
Avantel	150.33	-2.86	154.76
Endurance Techn	2548.5	-2.62	2617.02
Euro India Fres	231.7	-2.57	237.82
Auto Stampings	477.2	-2.46	489.24
Cochin Shipyard	1594.5	-2.33	1632.57
Elecon Eng	484.85	-2.33	496.43
Deep Ind	445.6	-2.23	455.75
HUDCO	206.53	-2.21	211.19
Shriram Propert	83.11	-2.07	84.87
Monarch Net	299.7	-1.98	305.76
Vaswani Ind	55.53	-1.86	56.58

\* Stocks crossing below its Simple Moving Average (200DMA)

Sectoral Indices - Gainers Losers for the day



Nifty 50 Stocks - Summary Details											
Symbol	LTP	Chng	% Chng	Volume (lacs)	Turnover (crs.)	52w High	Diff with 52w H	52w Low	Diff with 52w L	365 days % chng	30 days % chng
NIFTY 50	23643.50	-46.10	-0.19%	4087.93	35047	26373	10.35%	22183	6.59%	-2.43%	-5.66%
ADANIENT	2718.00	5.10	0.19%	67.41	1845	2803	3.04%	1753	55.05%	26.75%	11.09%
ADANIPTS	1791.00	17.60	0.99%	56.17	1012	1824	1.80%	1291	38.78%	18.47%	27.36%
APOLLOHOSP	8080.00	-39.00	-0.48%	3.00	243	8180	1.22%	6697	20.66%	5.73%	14.25%
ASIANPAINT	2609.00	-13.20	-0.50%	7.95	208	2986	12.62%	2115	23.36%	7.67%	11.98%
AXISBANK	1245.50	-9.10	-0.73%	48.05	601	1418	12.18%	1043	19.47%	-8.12%	3.01%
BAJAJ-AUTO	10375.00	-76.00	-0.73%	2.27	236	10785	3.80%	7859	32.02%	5.17%	24.61%
BAJAJFINSV	1734.10	-6.10	-0.35%	23.48	410	2195	21.00%	1597	8.58%	-5.02%	-15.07%
BAJFINANCE	910.00	-2.15	-0.24%	50.12	459	1103	17.46%	788	15.50%	-0.34%	-0.96%
BEL	424.75	-4.10	-0.96%	75.93	323	473	10.29%	323	31.58%	-5.12%	21.22%
BHARTIARTL	1904.00	20.50	1.09%	158.07	3013	2175	12.44%	1741	9.39%	2.60%	1.97%
CIPLA	1428.70	-8.00	-0.56%	11.39	163	1673	14.60%	1166	22.56%	16.44%	-4.89%
COALINDIA	462.40	8.35	1.84%	78.58	365	491	5.87%	369	25.43%	6.10%	14.27%
DRREDDY	1343.20	39.60	3.04%	39.82	528	1380	2.65%	1148	16.96%	10.30%	8.65%
EICHERMOT	7040.00	6.00	0.09%	3.14	220	8230	14.46%	5220	34.88%	-1.23%	28.80%
ETERNAL	241.00	-4.82	-1.96%	182.75	444	368	34.59%	213	13.36%	-2.30%	-0.66%
GRASIM	2939.90	1.20	0.04%	15.87	467	3007	2.24%	2503	17.48%	7.24%	4.07%
HCLTECH	1131.00	7.00	0.62%	37.29	424	1780	36.46%	1103	2.50%	-22.07%	-33.31%
HDFCBANK	770.00	0.45	0.06%	243.47	1885	1021	24.55%	727	5.97%	-4.93%	-20.36%
HDFCLIFE	608.70	-3.85	-0.63%	29.01	177	821	25.84%	555	9.66%	-4.96%	-18.97%
HINDALCO	1065.00	-38.30	-3.47%	68.01	731	1105	3.62%	618	72.33%	5.29%	61.03%
HINDUNILVR	2270.10	21.40	0.95%	10.38	236	2750	17.45%	2023	12.24%	5.21%	-3.61%
ICICIBANK	1247.90	1.90	0.15%	117.46	1466	1500	16.81%	1188	5.08%	-7.43%	-13.99%
INDIGO	4314.90	34.40	0.80%	7.13	308	6233	30.77%	3895	10.77%	-6.97%	-22.80%
INFY	1116.00	21.00	1.92%	174.82	1959	1728	35.42%	1089	2.48%	-14.50%	-30.81%
ITC	309.20	2.00	0.65%	119.51	370	444	30.39%	287	7.74%	2.37%	-28.53%
JIOFIN	233.36	-0.77	-0.33%	104.47	245	339	31.08%	223	4.51%	-3.83%	-14.74%
JSWSTEEL	1279.00	-17.90	-1.38%	38.72	500	1314	2.66%	962	32.93%	4.96%	23.18%
KOTAKBANK	388.50	5.30	1.38%	194.61	757	453	14.28%	346	12.45%	1.60%	-7.78%
LT	3905.10	-35.30	-0.90%	13.39	525	4440	12.05%	3288	18.76%	-4.20%	7.93%
M&M	3128.40	-45.50	-1.43%	21.96	690	3840	18.53%	2896	8.02%	-3.93%	-0.51%
MARUTI	13230.00	155.00	1.19%	2.68	354	17370	23.83%	12016	10.10%	-0.44%	2.15%
MAXHEALTH	1049.60	0.05	#VALUE!	14.71	155	1314	20.14%	903	16.23%	6.01%	-11.54%
NESTLEIND	1432.20	-27.40	-1.88%	32.93	475	1498	4.40%	1085	32.04%	13.97%	19.44%
NTPC	395.75	-0.55	-0.14%	71.07	281	414	4.50%	316	25.42%	0.80%	15.73%
ONGC	299.60	-1.30	-0.43%	136.94	412	308	2.57%	229	31.05%	4.17%	21.00%
POWERGRID	305.50	3.75	1.24%	100.89	309	325	5.99%	250	22.20%	-2.22%	1.95%
RELIANCE	1339.00	-22.80	-1.67%	199.74	2675	1612	16.93%	1290	3.80%	-0.38%	-7.92%
SBILIFE	1860.00	-6.70	-0.36%	8.51	159	2132	12.76%	1720	8.14%	-5.63%	4.23%
SBIN	961.60	-1.00	-0.10%	269.63	2607	1235	22.12%	779	23.42%	-10.26%	19.05%
SHRIRAMFIN	936.00	0.90	0.10%	57.59	540	1108	15.52%	567	65.23%	-8.32%	38.71%
SUNPHARMA	1878.00	14.80	0.79%	27.56	518	1888	0.52%	1548	21.32%	10.69%	7.92%
TATACONSUM	1235.00	6.70	0.55%	27.55	341	1283	3.72%	1007	22.62%	12.87%	7.65%
TATASTEEL	217.00	-4.13	-1.87%	332.17	729	224	3.30%	149	45.63%	3.97%	37.91%
TCS	2267.00	21.00	0.93%	34.10	778	3623	37.43%	2206	2.75%	-11.27%	-36.67%
TECHM	1367.50	24.10	1.79%	53.07	728	1854	26.24%	1304	4.86%	-7.84%	-16.06%
TITAN	4164.80	29.60	0.72%	9.02	376	4605	9.56%	3303	26.09%	-7.90%	14.52%
TMPV	356.15	17.40	5.14%	516.87	1852	744	52.13%	294	21.02%	-0.49%	-51.09%
TRENT	4102.50	-29.90	-0.72%	6.84	279	6261	34.48%	3276	25.25%	3.12%	-26.45%
ULTRACEMCO	11507.00	-185.00	-1.58%	2.84	329	13110	12.23%	10325	11.45%	-2.36%	-3.25%
WIPRO	190.29	1.99	1.06%	178.99	341	273	30.32%	187	2.03%	-9.28%	-25.83%

## Disclaimer / Disclosures

### ANALYST CERTIFICATION

I, Mrs. Vaishali Parekh B.com, Research Analyst, author and the name subscribed to this report, hereby certify that all of the views expressed in this research report accurately reflect our views about the subject issuer(s) or securities. We also certify that no part of our compensation was, is, or will be directly or indirectly related to the specific recommendation(s) or view(s) in this report.

Terms & conditions and other disclosures:

Prabhudas Lilladher Pvt. Ltd, Mumbai, India (hereinafter referred to as "PL") is engaged in the business of Stock Broking, Portfolio Manager, Depository Participant and distribution for third party financial products. PL is a subsidiary of Prabhudas Lilladher Advisory Services Pvt Ltd. which has its various subsidiaries engaged in business of commodity broking, investment banking, financial services (margin funding) and distribution of third party financial/other products, details in respect of which are available at [www.plindia.com](http://www.plindia.com)

This document has been prepared by the Research Division of PL and is meant for use by the recipient only as information and is not for circulation. This document is not to be reported or copied or made available to others without prior permission of PL. It should not be considered or taken as an offer to sell or a solicitation to buy or sell any security.

The information contained in this report has been obtained from sources that are considered to be reliable. However, PL has not independently verified the accuracy or completeness of the same. Neither PL nor any of its affiliates, its directors or its employees accepts any responsibility of whatsoever nature for the information, statements and opinion given, made available or expressed herein or for any omission therein.

Recipients of this report should be aware that past performance is not necessarily a guide to future performance and value of investments can go down as well. The suitability or otherwise of any investments will depend upon the recipient's particular circumstances and, in case of doubt, advice should be sought from an independent expert/advisor.

Either PL or its affiliates or its directors or its employees or its representatives or its clients or their relatives may have position(s), make market, act as principal or engage in transactions of securities of companies referred to in this report and they may have used the research material prior to publication.

PL may from time to time solicit or perform investment banking or other services for any company mentioned in this document.

PL is registered as Research Analyst under Securities and Exchange Board of India (Research Analysts) Regulations, 2014 PL submits that no material disciplinary action has been taken on us by any Regulatory Authority impacting Equity Research Analysis activities.

PL or its research analysts or its associates or his relatives do not have any financial interest in the subject company.

PL or its research analysts or its associates or his relatives do not have actual/beneficial ownership of one per cent or more securities of the subject company at the end of the month immediately preceding the date of publication of the research report.

PL or its research analysts or its associates or his relatives do not have any material conflict of interest at the time of publication of the research report.

PL or its associates might have received compensation from the subject company in the past twelve months.

PL or its associates might have managed or co-managed public offering of securities for the subject company in the past twelve months or mandated by the subject company for any other assignment in the past twelve months.

PL or its associates might have received any compensation for investment banking or merchant banking or brokerage services from the subject company in the past twelve months.

PL or its associates might have received any compensation for products or services other than investment banking or merchant banking or brokerage services from the subject company in the past twelve months PL or its associates might have received any compensation or other benefits from the subject company or third party in connection with the research report.

PL encourages independence in research report preparation and strives to minimize conflict in preparation of research report. PL or its analysts did not receive any compensation or other benefits from the subject Company or third party in connection with the preparation of the research report. PL or its Research Analysts do not have any material conflict of interest at the time of publication of this report.

It is confirmed that Mrs. Vaishali Parekh B.com, Research Analyst of this report has not received any compensation from the companies mentioned in the report in the preceding twelve months compensation of our Research Analysts is not based on any specific merchant banking, investment banking or brokerage service transactions.

The Research analysts for this report certifies that all of the views expressed in this report accurately reflect his or her personal views about the subject company or companies and its or their securities, and no part of his or her compensation was, is or will be, directly or indirectly related to specific recommendations or views expressed in this report.

The research analysts for this report has not served as an officer, director or employee of the subject company PL or its research analysts have not engaged in market making activity for the subject company

Our sales people, traders, and other professionals or affiliates may provide oral or written market commentary or trading strategies to our clients that reflect opinions that are contrary to the opinions expressed herein, and our proprietary trading and investing businesses may make investment decisions that are inconsistent with the recommendations expressed herein. In reviewing these materials, you should be aware that any or all of the foregoing, among other things, may give rise to real or potential conflicts of interest.

PL and its associates, their directors and employees may (a) from time to time, have a long or short position in, and buy or sell the securities of the subject company or (b) be engaged in any other transaction involving such securities and earn brokerage or other compensation or act as a market maker in the financial instruments of the subject company or act as an advisor or lender/borrower to the subject company or may have any other potential conflict of interests with respect to any recommendation and other related information and opinions.

**Regd. Office:** 3<sup>rd</sup> Floor, Sadhana House, 570, P. B. Marg, Behind Mahindra Tower, Worli, Mumbai - 400 018, India.